
Oddelek za zootehniko

Groblje 3, Domžale

Tel.: 01-3203-920

Fax.: 01-7241-005

PLODNOST SVINJ NA FARMAH PRAŠIČEV

ZA LETO 2016

Dokument št. 12-2/2017

IHAN
KLINJA VAS

KRŠKO
LJUTOMER

VODENJE REPRODUKCIJE NA FARMI:

Marta ZAJEC, univ. dipl. inž. zoot.
France TRDAN, univ. dipl. inž. zoot.
Vladimir ŽNIDARIČ, inž. agr.
Simon BANIČ, kmet. teh.

OBDELAVA IN OCENA REZULTATOV:

Prof. dr. Milena KOVAČ
Doc. dr. Špela MALOVRH
Janja URANKAR, univ. dipl. inž. zoot.
Karmen LOŽAR, dipl. inž. zoot.
Irena ULE
Meta MARUŠIČ
Stanka PAVLIN

DOMŽALE, april 2017

Kazalo

1	Farme skupaj	9
1.1	Velikost gnezda	9
1.2	Analiza pripustov	10
1.3	Analiza reprodukcijskega ciklusa	13
1.4	Interim obdobje in poodstavitveni premor	17
1.5	Analiza izločitev	19
2	Primerjava plodnosti med farmami v letu 2016	21
2.1	Velikost gnezda	21
2.2	Analiza pripustov	21
2.3	Analiza reprodukcijskega ciklusa	22
2.4	Interim obdobje in poodstavitveni premor	23
2.5	Analiza izločitev	23
3	Farma Kočevje	25
3.1	Velikost gnezda	25
3.2	Analiza pripustov	26
3.3	Analiza reprodukcijskega ciklusa	29
3.4	Interim obdobje in poodstavitveni premor	33
3.5	Analiza izločitev	35
4	Farma Ljutomer	37
4.1	Velikost gnezda	37
4.2	Analiza pripustov	38
4.3	Analiza reprodukcijskega ciklusa	41
4.4	Interim obdobje in poodstavitveni premor	45
4.5	Analiza izločitev	47
5	Farma Krško	49
5.1	Velikost gnezda	49
5.2	Analiza pripustov	50
5.3	Analiza reprodukcijskega ciklusa	53
5.4	Interim obdobje in poodstavitveni premor	57
5.5	Analiza izločitev	59
6	Grafični prikaz rezultatov plodnosti	61

Tabele

1.1	Velikost gnezda po letih na farmah skupaj	9
1.2	Analiza pripustov mladic po letih na farmah skupaj	10
1.3	Analiza pripustov starih svinj po letih na farmah skupaj	11
1.4	Distribucija pregonitev po letih na farmah skupaj	12
1.5	Starost mladic ob praritvi in število krmnih dni na živorojenega pujska pri mladicah na farmah skupaj	13
1.6	Doba med praritvama in število krmnih dni na pujska po letih na farmah skupaj	14
1.7	Velikost gnezda ob rojstvu, gospodarnost priraje pujskov in delež letne obnove črede svinj na farmah skupaj	15
1.8	Dolžina laktacije in starostna struktura po letih na farmah skupaj	16
1.9	Interim obdobje po letih na farmah skupaj	17
1.10	Poodstavitveni premor po letih na farmah skupaj	18
1.11	Izločitve svinj po letih na farmah skupaj	19
2.1	Velikost gnezda na farmah	21
2.2	Analiza pripustov mladic na farmah	21
2.3	Analiza pripustov starih svinj na farmah	21
2.4	Distribucija pregonitev na farmah	22
2.5	Starost mladic ob praritvi in število krmnih dni na živorojenega pujska pri mladicah na farmah	22
2.6	Doba med praritvama in število krmnih dni na pujska na farmah	22
2.7	Velikost gnezda ob rojstvu, gospodarnost priraje pujskov in delež letne obnove črede svinj na farmah	22
2.8	Dolžina laktacije in starostna struktura na farmah	23
2.9	Interim obdobje na farmah	23
2.10	Poodstavitveni premor na farmah	23
2.11	Izločitve svinj na farmah	23
3.1	Velikost gnezda po letih na farmi Kočevje	25
3.2	Analiza pripustov mladic po letih na farmi Kočevje	26
3.3	Analiza pripustov starih svinj po letih na farmi Kočevje	27
3.4	Distribucija pregonitev po letih na farmi Kočevje	28
3.5	Starost mladic ob praritvi in število krmnih dni na živorojenega pujska	29
3.6	Doba med praritvama in število krmnih dni na pujska po letih na farmi Kočevje	30
3.7	Velikost gnezda ob rojstvu, gospodarnost priraje pujskov in delež letne obnove	31
3.8	Dolžina laktacije in starostna struktura po letih na farmi Kočevje	32
3.9	Interim obdobje po letih na farmi Kočevje	33
3.10	Poodstavitveni premor po letih na farmi Kočevje	34
3.11	Izločitve svinj po letih na farmi Kočevje	35

4.1	Velikost gnezda po letih na farmi Ljutomer	37
4.2	Analiza pripustov mladic po letih na farmi Ljutomer	38
4.3	Analiza pripustov starih svinj po letih na farmi Ljutomer	39
4.4	Distribucija pregonitev po letih na farmi Ljutomer	40
4.5	Starost mladic ob pravitvi in število krmnih dni na živorojenega pujska	41
4.6	Doba med pravitvama in število krmnih dni na pujska po letih na farmi Ljutomer	42
4.7	Velikost gnezda ob rojstvu, gospodarnost priraje pujskov in delež letne obnove	43
4.8	Dolžina laktacije in starostna struktura po letih na farmi Ljutomer	44
4.9	Interim obdobje po letih na farmi Ljutomer	45
4.10	Poodstavitveni premor po letih na farmi Ljutomer	46
4.11	Izločitve svinj po letih na farmi Ljutomer	47
5.1	Velikost gnezda po letih na farmi Krško	49
5.2	Analiza pripustov mladic po letih na farmi Krško	50
5.3	Analiza pripustov starih svinj po letih na farmi Krško	51
5.4	Distribucija pregonitev po letih na farmi Krško	52
5.5	Starost mladic ob pravitvi in število krmnih dni na živorojenega pujska	53
5.6	Doba med pravitvama in število krmnih dni na pujska po letih na farmi Krško	54
5.7	Velikost gnezda ob rojstvu, gospodarnost priraje pujskov in delež letne obnove	55
5.8	Dolžina laktacije in starostna struktura po letih na farmi Krško	56
5.9	Interim obdobje po letih na farmi Krško	57
5.10	Poodstavitveni premor po letih na farmi Krško	58
5.11	Izločitve svinj po letih na farmi Krško	59

Slike

6.1	Število živorojenih pujskov pri mladicah v rejah prašičev v Sloveniji po letih	61
6.2	Starost mladic ob pravitvi v rejah prašičev v Sloveniji po letih	61
6.3	Starost mladic ob izločitvi v rejah prašičev v Sloveniji po letih	62
6.4	Število krmnih dni na živorojenega pujska pri mladicah v rejah prašičev v Sloveniji po letih . . .	62
6.5	Distribucija starosti mladic ob prvem pripustu na farmah prašičev v Sloveniji v letu 2016	63
6.6	Starost mladic ob pravitvi in velikost gnezda pri mladicah na farmah prašičev v Sloveniji v letu 2016	63
6.7	Število živorojenih pujskov pri starih svinjah v rejah prašičev v Sloveniji po letih	64
6.8	Doba od pravitve do izločitve pri starih svinjah v rejah prašičev v Sloveniji po letih	64
6.9	Število krmnih dni na živorojenega pujska pri starih svinjah v rejah prašičev v Sloveniji po letih .	65
6.10	Dolžina predhodne laktacije in velikost gnezda ob rojstvu v rejah prašičev v Sloveniji v letu 2016	65
6.11	Število odstavljenih pujskov na gnezdo v rejah prašičev v Sloveniji po letih	66
6.12	Delež izgubljenih pujskov v rejah prašičev v Sloveniji po letih	66
6.13	Število krmnih dni na odstavljenega pujska v rejah prašičev v Sloveniji po letih	67
6.14	Starostna struktura črede plemenskih svinj na farmah prašičev v Sloveniji v letu 2016	67
6.15	Delež izidov po pripustu na farmah (polna črta) prašičev in kmetijah (prekinjena črta) skupaj v Sloveniji po letih	68
6.16	Dolžina uspešnega reprodukcijskega ciklusa pri mladicah in starih svinjah na farmah (polna črta) prašičev in kmetijah (prekinjena črta) v Sloveniji po letih	68

Legenda

Oznake

DOP	doba od odbire do prasiatve
DMP	doba med prasiatvama
IO	interim obdobje
PP	podstavitveni premor
DOI	doba od odbire do izločitve
DI	doba od prasiatve do izločitve
DPI	doba od pripusta do izločitve
DPP	doba od pripusta do pregonitve
kDMP	korigirana doba med prasiatvama
kDOP	korigirana doba od odbire do prasiatve
G_S	število gnezd na svinjo v proizvodnem obdobju
G_L	število gnezd na svinjo letno
$P_{\bar{z}}$	število živorojenih pujskov
P_O	število odstavljenih pujskov
KD	krmni dnevi
PF	produktivne faze
št.	število
Sk.	skupaj
gn.	gnezdo
prip. (pr.)	pripust
pras.	prasiatve
Izl.	izločitev, izločenih
Usp.	uspešni
Lakt.	laktacija
Preg.	pregonitev

Šifrant izločitev

8	izostanek bukanja
9	nebreje-nepregonjene
10	večkratna pregonitev

Opomba: Poleg farm, ki so prikazane v tabelah in grafih za farme skupaj, so bile zajete do leta 2006 še farma Stična, do leta 2007 farma Ptuj, do leta 2009 farma Podgrad, do leta 2012 farma Nemščak in do leta 2014 farma Ihan.

Poglavje 1

Farme skupaj

1.1 Velikost gnezda

Tabela 1.1: Velikost gnezda po letih na farmah skupaj

Leto	MLADICE			STARE SVINJE						SKUPAJ		
	Št. pras.	DOP (dni)	$P_{\bar{z}}$ /gn.	Št. pras.	DMP (dni)	Lakt. (dni)	IO (dni)	PP (dni)	$P_{\bar{z}}$ /gn.	Št. pras.	P_O /gn.	Izgube (%)
1980	4685	173.6	8.61	12685	158.1	22.3	10.3	18.8	9.60	17370	8.33	10.7
1981	8178	174.1	8.58	19293	159.7	24.1	10.9	19.3	9.48	27471	8.28	10.1
1982	8194	167.7	8.62	27089	156.3	24.0	10.9	17.7	9.53	35283	8.22	11.8
1983	9074	162.3	8.72	29125	154.6	23.9	10.5	16.0	9.57	38199	8.21	12.3
1984	8363	160.9	8.73	31676	154.9	24.1	11.1	16.2	9.68	40039	8.31	12.4
1985	8951	159.6	8.66	30777	154.5	24.7	10.5	15.1	9.67	39728	8.36	11.4
1986	11509	153.0	8.66	33603	154.6	24.4	10.4	15.4	9.72	45112	8.35	11.7
1987	9689	152.8	8.54	36667	155.5	24.3	10.8	16.4	9.79	46356	8.22	13.7
1988	11338	150.2	8.62	34866	155.2	24.1	10.6	16.1	9.95	46204	8.31	13.7
1989	10090	147.8	8.70	34419	155.9	25.1	10.3	15.7	9.99	44509	8.34	14.0
1990	10187	142.8	8.70	35524	155.4	25.6	9.6	14.8	9.95	45711	8.27	14.4
1991	9980	144.0	8.78	35878	153.9	25.0	9.1	13.9	10.01	45858	8.33	14.5
1992	7162	144.2	8.80	27697	155.7	26.3	9.0	14.3	9.86	34859	8.31	13.9
1993	8410	145.7	8.71	26518	156.5	27.0	8.9	14.5	9.94	34928	8.33	13.6
1994	8021	141.6	8.77	28021	155.0	26.6	9.0	13.4	10.07	36042	8.47	13.4
1995	8001	143.2	8.77	28863	154.1	26.1	9.4	13.0	10.12	36864	8.54	13.1
1996	7837	142.0	8.82	28720	154.0	26.1	9.5	12.7	10.08	36557	8.48	13.6
1997	9700	141.8	8.81	35361	154.5	26.2	9.7	13.2	10.12	45061	8.60	12.6
1998	9656	138.6	8.85	36105	154.1	26.0	9.5	12.9	10.17	45761	8.67	12.3
1999	9251	141.9	8.84	35465	153.7	25.7	9.5	12.9	10.23	44716	8.75	12.0
2000	9337	143.8	9.00	35829	153.1	25.6	9.5	12.4	10.30	45166	8.71	13.1
2001	9027	149.3	9.22	35055	152.0	25.8	8.4	11.0	10.37	44082	8.90	12.1
2002	9022	152.3	9.14	35193	151.3	24.7	8.2	11.0	10.22	44215	8.90	11.0
2003	10074	156.1	9.63	34615	151.1	24.3	8.4	11.3	10.31	44689	8.88	12.5
2004	11046	159.7	9.86	32276	150.3	24.3	8.4	10.6	10.62	43322	9.15	12.3
2005	10379	158.0	10.15	33562	150.6	24.4	8.7	10.9	10.85	43941	9.41	11.9
2006	9733	155.3	10.40	33754	149.9	24.7	8.3	10.0	11.28	43487	9.72	12.4
2007	8477	159.5	10.70	33509	149.6	24.8	8.0	9.6	11.65	41986	10.05	12.3
2008	7102	170.1	10.92	25700	150.8	25.6	8.5	9.9	11.87	32802	9.81	15.9
2009	5901	171.1	10.85	20100	159.5	26.7	11.7	17.4	12.23	26001	10.07	15.5
2010	4112	170.4	11.72	16159	154.5	28.5	9.0	10.4	12.81	20271	10.89	13.5
2011	3828	172.8	12.03	14040	153.1	28.8	7.5	8.6	13.39	17868	11.40	12.9
2012	2213	172.4	12.39	9011	155.2	29.4	8.1	9.7	13.72	11224	11.82	12.2
2013	2397	171.1	13.06	7408	154.8	29.9	7.0	8.3	14.10	9805	12.31	11.1
2014	2171	172.0	13.13	7154	156.0	30.0	7.4	9.1	14.57	9325	12.59	11.5
2015	1912	169.1	12.93	6676	157.3	31.3	7.0	8.9	14.57	8588	12.20	14.1
2016	1993	167.3	13.09	7012	156.7	31.2	7.1	8.6	14.60	9005	12.01	15.8

1.2 Analiza pripustov

Tabela 1.2: Analiza pripustov mladic po letih na farmah skupaj

Leto	S K U P A J							PRVI PRIPUST				DRUGI IN VIŠJI			
	Št. pr.	Usp. pr. (%)	Izl. po pr. (%)	Preg. (%)	DPI (dni)	DPP (dni)	$P_{\bar{z}}$ /pr.	Št. pr.	Prvi (%)	Usp. (%)	$P_{\bar{z}}$ /pr.	Št. pr.	≥ 2 (%)	Usp. (%)	$P_{\bar{z}}$ /pr.
1980	7100	66.0	16.5	17.5	89.2	41.8	5.7								
1981	11099	73.7	10.3	16.0	85.4	42.0	6.3	9495	85.6	75.7	6.5	1604	14.5	62.2	5.3
1982	10645	73.5	12.4	14.1	84.9	35.2	6.4	9216	86.6	75.3	7.7	1429	13.4	62.3	6.0
1983	11945	74.6	14.9	10.5	83.8	33.2	6.5	10690	90.3	74.9	6.5	1255	9.7	63.6	5.8
1984	11182	74.4	13.7	11.0	84.7	34.3	6.6	9981	89.3	75.9	6.7	1201	10.7	62.1	5.7
1985	12089	73.8	13.9	12.1	84.8	32.9	6.4	10776	89.1	75.7	6.6	1313	10.9	60.2	5.2
1986	15533	74.0	12.6	13.1	77.3	33.3	6.4	13539	87.2	75.7	6.5	1994	12.8	62.4	5.5
1987	13443	72.6	14.1	13.2	81.6	34.9	6.2	11675	86.9	74.5	6.4	1768	13.2	59.7	5.2
1988	16186	69.8	15.7	14.2	81.1	32.9	6.0	13939	86.1	71.9	6.2	2247	13.9	56.9	5.0
1989	14385	70.2	15.4	13.9	75.0	35.0	6.1	12401	86.2	72.4	6.3	1984	13.8	56.7	5.1
1990	13756	73.8	13.9	11.8	77.9	34.2	6.4	12098	87.9	75.7	6.6	1658	12.1	59.8	5.4
1991	13175	76.1	12.7	10.3	78.3	32.4	6.7	11777	89.4	77.9	6.9	1398	10.6	60.5	5.4
1992	9846	72.5	15.3	11.3	77.5	33.3	6.4	8717	88.5	74.2	6.5	1129	11.5	59.4	5.4
1993	12212	68.7	15.7	14.7	75.6	32.8	6.0	10420	85.3	71.0	6.2	1792	14.7	55.1	5.0
1994	10759	73.5	14.8	10.7	72.1	30.9	6.5	9639	89.6	75.2	6.6	1120	10.4	58.7	5.3
1995	10895	73.1	14.3	9.5	72.9	32.3	6.6	9813	90.1	76.8	6.7	1082	9.9	61.6	5.8
1996	10349	77.0	13.0	9.3	72.1	32.0	6.8	9377	90.6	78.3	6.9	972	9.4	64.1	5.8
1997	13019	74.7	13.2	9.4	74.6	32.1	6.8	11791	90.6	77.8	6.8	1228	9.4	66.7	6.0
1998	12631	79.1	12.2	9.0	76.0	32.2	6.9	11500	91.0	79.3	7.0	1131	9.0	64.4	5.9
1999	12334	79.1	12.5	10.0	77.6	31.3	6.8	11075	89.8	78.4	6.9	1259	10.2	63.9	5.9
2000	12723	80.9	13.4	8.8	73.5	31.7	6.9	11564	90.9	78.4	7.0	1159	9.1	64.0	5.9
2001	12225	79.5	14.8	7.9	68.4	32.4	7.1	11239	91.9	78.3	7.2	986	8.1	59.4	5.6
2002	12453	75.0	16.7	7.8	65.5	31.7	6.9	11520	92.5	76.2	6.9	933	7.5	61.3	5.8
2003	13100	77.4	14.5	7.6	72.3	31.9	7.5	12051	92.0	78.6	7.6	1049	8.0	63.7	6.3
2004	14260	77.9	15.4	6.1	70.3	30.8	7.7	13380	93.8	79.2	7.8	880	6.2	59.2	5.7
2005	13100	80.4	13.8	5.1	67.0	28.8	8.1	12424	94.8	81.4	8.3	676	5.2	62.1	6.2
2006	12020	81.4	13.7	4.3	72.6	28.6	8.5	11472	95.4	82.0	8.5	548	4.6	67.2	6.8
2007	10347	82.2	11.9	5.0	66.4	28.1	8.8	9816	94.9	83.3	8.9	531	5.1	62.0	6.2
2008	8957	80.5	13.5	3.8	76.3	34.1	8.8	8625	96.3	81.3	8.9	332	3.7	61.7	6.5
2009	8010	74.0	17.4	4.4	83.1	40.1	8.0	7625	95.2	74.7	8.1	385	4.8	59.2	6.2
2010	5014	82.0	14.6	2.3	77.4	31.4	9.6	4900	97.7	82.2	9.7	114	2.3	71.1	7.4
2011	4682	81.6	12.3	3.7	83.9	36.6	9.8	4525	96.6	82.5	9.9	157	3.4	57.3	6.4
2012	2784	81.3	11.9	5.2	75.3	31.1	10.0	2616	94.0	82.3	10.2	168	6.0	64.9	7.7
2013	2884	83.4	11.1	5.4	70.3	35.9	10.9	2740	95.0	84.2	11.0	144	5.0	68.1	8.6
2014	2622	83.3	12.0	4.4	63.2	39.1	10.9	2487	94.9	84.4	11.1	135	5.2	63.7	8.3
2015	2351	81.6	13.8	4.3	65.2	51.4	10.6	2261	96.2	82.1	10.6	90	3.8	67.8	8.6
2016	2419	82.4	12.1	4.8	68.1	37.0	10.8	2287	94.5	83.2	10.9	132	5.5	67.4	8.1

Tabela 1.3: Analiza pripustov starih svinj po letih na farmah skupaj

Leto	S K U P A J							PRVI PRIPUST				DRUGI IN VIŠJI			
	Št. prip.	Usp. prip. (%)	Izl. po prip. (%)	Preg. (%)	DPI (dni)	DPP (dni)	$P_{\bar{z}}$ / prip.	Št. prip.	Prvi (%)	Usp. (%)	$P_{\bar{z}}$ / prip.	Št. prip.	≥ 2 (%)	Usp. (%)	$P_{\bar{z}}$ / prip.
1980	18474	68.7	9.5	21.8	73.0	36.4	6.6								
1981	29016	66.5	8.8	24.7	79.2	38.5	6.3	22329	77.0	68.1	6.5	6687	23.1	61.0	5.8
1982	35815	73.9	8.8	17.3	78.1	36.6	7.1	29483	82.3	76.0	7.2	6332	17.7	64.0	6.6
1983	38340	75.7	8.8	15.4	77.4	34.9	7.3	32463	84.7	77.4	7.4	5877	15.3	66.4	6.6
1984	42047	75.2	9.5	15.0	79.5	33.7	7.3	35577	84.6	77.2	7.4	6470	15.4	64.4	6.4
1985	41739	73.6	10.7	15.4	76.9	33.5	7.1	35664	85.4	75.8	7.3	6075	14.6	62.0	6.1
1986	44978	74.7	9.6	15.6	73.5	33.7	7.3	38079	84.7	76.6	7.4	6899	15.3	64.0	6.3
1987	50272	72.8	10.6	16.5	70.4	34.6	7.1	41988	83.5	74.6	7.3	8284	16.5	63.3	6.3
1988	48244	72.4	10.8	16.5	73.2	34.0	7.2	40172	83.3	74.9	7.4	8072	16.7	60.1	6.1
1989	47616	72.2	10.6	16.7	67.8	33.8	7.2	39559	83.1	74.7	7.4	8057	16.9	60.0	6.0
1990	48331	73.4	9.8	16.4	65.6	32.2	7.3	40152	83.1	76.1	7.6	8179	16.9	60.0	6.0
1991	48546	74.0	9.4	16.1	67.0	31.0	7.4	40834	84.1	76.5	7.7	7712	15.9	60.9	6.1
1992	39467	70.3	10.7	18.4	67.4	29.8	6.9	32153	81.5	73.6	7.3	7314	18.5	55.9	5.5
1993	38599	68.8	11.4	19.3	65.1	30.5	6.8	31041	80.4	72.3	7.2	7558	19.6	54.3	5.4
1994	38297	72.7	10.6	16.1	66.0	31.4	7.3	32195	84.1	75.6	7.6	6102	15.9	57.7	5.8
1995	37213	77.4	9.7	12.2	67.1	31.2	7.8	32361	87.0	79.3	8.0	4852	13.0	64.2	6.5
1996	36879	77.8	9.9	11.6	71.3	32.9	7.8	32597	88.4	79.6	8.0	4282	11.6	64.5	6.5
1997	44967	78.6	9.0	11.7	71.4	33.3	8.0	39641	88.2	80.3	8.1	5326	11.8	66.4	6.8
1998	45824	78.9	8.9	11.6	72.8	33.3	8.0	40614	88.6	80.4	8.2	5210	11.4	66.5	6.8
1999	45052	78.7	9.2	11.3	70.7	32.4	8.1	39800	88.3	80.5	8.2	5252	11.7	64.6	6.6
2000	45069	79.5	9.5	10.3	70.5	32.3	8.2	40304	89.4	81.2	8.4	4765	10.6	65.1	6.8
2001	44046	79.7	9.7	9.8	68.9	31.9	8.3	39748	90.2	81.5	8.4	4298	9.8	63.2	6.6
2002	44508	78.9	10.1	10.3	66.2	32.0	8.1	39929	89.7	80.8	8.3	4579	10.3	62.5	6.4
2003	43844	79.0	10.1	10.3	66.9	31.9	8.1	39192	89.4	80.8	8.3	4652	10.6	64.1	6.6
2004	40162	80.6	10.2	8.8	71.7	31.0	8.6	36663	91.3	82.4	8.8	3499	8.7	62.0	6.5
2005	41047	81.8	9.9	7.8	71.8	31.7	8.9	37722	91.9	83.3	9.0	3325	8.1	63.9	6.9
2006	40882	82.9	9.6	6.7	74.1	30.6	9.4	38169	93.4	84.3	9.5	2713	6.6	64.0	7.0
2007	39918	84.0	8.7	6.7	71.1	29.4	9.8	37182	93.1	85.6	10.0	2736	6.9	63.4	7.1
2008	31020	83.3	8.3	6.8	73.9	38.9	9.9	29184	94.1	84.4	10.0	1836	5.9	65.7	7.5
2009	26122	77.4	8.9	10.8	79.0	47.7	9.5	23024	88.1	79.2	9.8	3098	11.9	63.9	7.3
2010	19023	84.8	9.2	4.8	72.6	31.4	10.9	18015	94.7	85.8	11.0	1008	5.3	67.1	8.0
2011	16533	85.4	8.4	4.5	83.0	33.2	11.4	15806	95.6	86.4	11.6	727	4.4	63.1	7.7
2012	10844	83.9	9.7	5.3	71.4	30.2	11.5	10200	94.1	84.9	11.7	644	5.9	68.9	8.6
2013	8652	85.8	9.0	5.2	70.6	31.6	12.1	8221	95.0	86.6	12.2	431	5.0	69.1	9.5
2014	8313	80.1	14.8	4.9	57.6	40.0	11.7	7906	95.1	80.8	11.8	407	4.9	67.8	9.9
2015	8028	84.6	9.4	5.7	71.4	40.8	12.3	7575	94.4	85.8	12.5	453	5.6	64.5	8.5
2016	8084	86.0	8.3	5.1	74.4	35.6	12.6	7675	94.9	87.3	12.8	409	5.1	61.4	8.0

Tabela 1.4: Distribucija pregonitev po letih na farmah skupaj

Leto	MLADICE					STARE SVINJE				
	Št. preg.	DPP (dni)	do 25. dne (%)	25-40 dni (%)	po 40. dnevu (%)	Št. preg.	DPP (dni)	do 25. dne (%)	25-40 dni (%)	po 40. dnevu (%)
1980	1243	41.8	37.8	19.9	42.3	4029	36.4	35.4	33.8	30.8
1981	1777	42.0	34.5	19.5	46.0	7169	38.5	31.4	33.3	35.3
1982	1508	35.2	45.7	24.3	30.0	6187	36.6	36.5	31.9	31.6
1983	1278	33.2	46.6	26.8	26.6	5916	34.9	38.8	32.0	29.2
1984	1225	34.3	46.5	25.5	28.0	6308	33.7	43.1	30.6	26.3
1985	1461	32.9	51.7	23.3	26.0	6452	33.5	43.5	30.8	25.7
1986	2037	33.3	50.6	22.2	27.2	7019	33.7	44.0	29.3	26.8
1987	1772	34.9	49.4	21.1	29.6	8299	34.6	42.5	29.1	28.4
1988	2304	32.9	52.2	21.0	26.8	7979	34.0	44.6	28.0	27.4
1989	1993	35.0	49.5	20.5	30.0	7940	33.8	47.4	24.6	28.0
1990	1616	34.2	49.6	22.2	28.1	7923	32.2	49.1	28.7	22.2
1991	1359	32.4	56.8	18.6	24.6	7825	31.0	53.8	27.4	18.8
1992	1109	33.3	53.2	20.8	26.0	7257	29.8	56.8	27.2	16.0
1993	1792	32.8	54.1	21.1	24.9	7442	30.5	55.2	27.0	17.8
1994	1262	30.9	60.7	18.2	21.2	7028	31.4	53.7	25.2	21.1
1995	1296	32.3	55.8	20.7	23.5	5478	31.2	51.7	25.8	22.5
1996	1289	32.0	53.4	23.4	23.2	5396	32.9	48.0	28.2	23.8
1997	1223	32.1	55.2	20.4	24.4	5274	33.3	48.1	25.7	26.2
1998	1140	32.2	55.7	19.0	25.4	5334	33.3	45.9	28.3	25.9
1999	1233	31.3	57.1	20.2	22.7	5079	32.4	47.2	28.5	24.3
2000	1121	31.7	56.0	21.4	22.6	4651	32.3	46.3	28.9	24.8
2001	970	32.4	53.4	21.6	25.0	4312	31.9	47.3	30.4	22.3
2002	967	31.7	55.6	22.0	22.4	4562	32.0	45.7	31.7	22.5
2003	997	31.9	55.4	22.7	21.9	4497	31.9	47.1	30.6	22.3
2004	867	30.8	54.6	26.0	19.5	3520	31.0	47.2	34.1	18.8
2005	674	28.8	52.2	35.2	12.6	3184	31.7	42.8	35.6	21.6
2006	511	28.6	55.4	31.3	13.3	2739	30.6	45.9	35.0	19.1
2007	521	28.1	56.4	30.7	12.9	2656	29.4	48.5	33.1	18.4
2008	337	34.1	49.0	25.2	25.8	2096	38.9	42.9	25.5	31.6
2009	354	40.1	41.8	24.9	33.4	2834	47.7	32.2	21.5	46.3
2010	115	31.4	53.1	23.5	23.4	905	31.4	53.6	22.3	24.1
2011	173	36.6	37.0	28.3	34.7	747	33.2	50.0	22.6	27.4
2012	146	31.1	54.1	21.9	24.0	577	30.2	62.7	20.8	16.5
2013	155	35.9	58.1	15.5	26.4	450	31.6	58.4	18.0	23.6
2014	115	39.1	43.5	20.9	35.7	408	40.0	47.8	12.0	40.2
2015	100	51.4	33.0	6.0	61.0	459	40.8	44.4	11.1	44.5
2016	117	37.0	48.7	15.4	35.9	411	35.6	45.3	23.8	30.9

1.3 Analiza reprodukcijskega ciklusa

Tabela 1.5: Starost mladic ob pravitvi in število krmnih dni na živorojenega pujska pri mladicah na farmah skupaj

Leto	Št. pras.	Starost ob		do 360 dni (%)	361-420 dni (%)	≥421 dni (%)	Izl. (%)	pred prip. (%)	po prip. (%)	Starost ob izl.	kDOP (dni)	KD/ $P_{\bar{z}}$
		1.prip. pras.	pras.									
1980	4685	250.3	373.6	43.7	45.0	11.4	21.3			343.0	213.2	24.7
1981	8178	252.9	374.1	43.6	43.8	12.7	14.2			342.3	197.6	23.0
1982	8194	236.4	369.2	50.1	41.6	8.3	13.7			344.6	192.1	22.3
1983	9006	243.9	361.7	58.3	36.8	4.9	16.7			338.4	189.5	21.8
1984	8397	243.0	360.3	59.6	35.3	5.1	15.3			346.6	186.9	21.6
1985	8908	242.0	359.4	58.2	37.6	4.2	15.9			341.7	186.3	21.6
1986	11446	234.5	352.7	67.4	29.0	3.6	14.6			328.7	174.8	20.3
1987	9672	234.1	352.2	67.9	28.6	3.5	16.3			336.2	178.6	21.0
1988	11284	231.3	349.9	69.2	28.0	2.8	18.3			328.5	178.7	20.8
1989	10083	228.7	347.4	72.7	25.4	2.0	17.8			319.9	173.3	20.1
1990	10098	224.6	342.2	79.3	19.2	1.5	15.7			317.3	164.1	19.0
1991	10041	226.3	343.5	79.6	18.7	1.7	14.1			320.6	163.3	18.6
1992	7171	226.0	343.5	76.9	21.0	1.8	17.4			317.7	168.2	19.1
1993	8473	226.6	345.1	74.5	22.9	2.5	18.4			317.3	171.7	19.7
1994	8021	223.8	341.6	78.3	21.1	0.6	32.9	63.2	36.8	285.2	185.9	21.2
1995	7902	225.5	343.5	76.4	22.2	1.5	34.1	63.7	36.3	288.3	191.2	21.8
1996	7870	224.1	341.8	78.2	21.1	0.7	35.6	68.4	31.6	280.6	187.9	21.3
1997	9609	224.3	342.3	77.7	21.5	0.8	35.2	68.6	31.4	281.8	188.1	21.4
1998	9650	220.9	338.6	81.0	18.3	0.7	36.2	72.6	27.4	277.2	184.1	20.8
1999	9317	223.3	341.2	79.7	19.0	1.3	36.1	71.9	28.1	279.1	187.4	21.2
2000	9497	225.2	343.0	78.3	20.0	1.7	36.3	69.8	30.2	281.9	191.0	21.3
2001	9128	235.5	349.0	69.3	29.1	1.6	38.4	69.4	30.6	283.7	202.3	21.9
2002	9103	234.5	352.2	63.5	35.2	1.3	39.9	68.0	32.0	282.7	208.1	22.8
2003	9946	237.3	355.1	62.4	35.3	2.3	38.8	69.9	30.1	284.2	209.5	21.8
2004	10921	242.7	359.6	54.2	44.1	1.7	36.4	65.5	34.5	287.5	210.8	21.3
2005	10315	241.4	358.1	55.9	43.5	0.5	36.2	68.9	31.1	284.0	207.3	20.5
2006	9562	238.6	355.2	63.4	36.0	0.6	36.1	70.1	29.9	283.9	204.4	19.7
2007	8382	242.2	358.9	57.8	41.7	0.5	40.3	77.6	22.4	273.8	210.6	19.6
2008	7159	253.0	369.5	33.8	64.4	1.8	39.2	73.7	26.3	293.1	235.2	21.5
2009	5721	254.2	371.5	30.2	67.1	2.7	41.2	68.8	31.2	301.1	256.8	23.6
2010	4140	252.9	369.7	30.3	68.3	1.4	41.6	74.9	25.1	287.1	234.9	20.0
2011	3977	255.8	372.8	23.7	74.2	2.1	37.5	75.0	25.0	301.1	239.3	19.9
2012	2158	254.6	372.3	30.0	65.5	4.5	38.9	78.2	21.8	286.4	231.5	18.8
2013	2377	251.6	370.4	31.6	66.6	1.8	35.7	76.5	23.5	296.7	224.6	17.2
2014	2192	252.2	371.3	30.8	67.3	1.9	32.1	71.7	28.3	296.4	217.3	16.5
2015	1857	250.9	369.8	35.0	62.7	2.3	34.4	67.1	32.9	295.5	221.1	17.1
2016	1988	247.9	366.7	41.2	57.1	1.7	28.7	65.0	35.0	295.4	206.6	15.7

Tabela 1.6: Doba med prasiatvama in število krmnih dni na pujska po letih na farmah skupaj

Leto	Št. pras.	DMP (dni)	do 160 dni (%)	161-200 dni (%)	≥201 dni (%)	Izl. (%)	DI (dni)	kDMP (dni)	G_L	$P_{\bar{z}}$ / leto	KD/ $P_{\bar{z}}$
1980	12685	158.1	69.9	22.6	7.5	19.5	102.7	182.9	2.00	19.2	19.1
1981	19293	159.7	68.6	27.1	4.3	21.9	109.7	190.4	1.92	18.2	20.1
1982	24428	156.3	72.6	25.5	2.0	21.4	90.7	180.5	2.04	19.4	18.8
1983	28691	154.0	76.4	19.2	4.5	19.0	88.5	174.8	2.09	20.0	18.3
1984	31409	154.2	74.7	20.9	4.4	20.4	90.4	177.4	2.06	19.8	18.4
1985	30470	153.9	76.1	20.2	3.8	21.5	93.6	179.5	2.03	19.6	18.6
1986	32970	154.2	75.0	20.9	4.1	20.4	85.6	176.2	2.07	20.1	18.2
1987	36390	155.0	74.3	20.9	4.8	20.7	87.8	177.9	2.05	20.0	18.3
1988	34957	154.4	75.3	20.3	4.4	24.3	81.4	180.6	2.02	20.0	18.2
1989	34215	155.3	73.8	21.9	4.3	23.2	83.8	180.6	2.02	20.1	18.2
1990	35511	154.7	74.7	21.6	3.7	21.8	78.7	176.6	2.10	20.4	17.9
1991	35970	153.3	77.4	19.7	3.0	21.7	76.4	174.5	2.10	20.9	17.5
1992	28152	154.9	75.0	21.5	3.6	20.9	88.2	178.2	2.00	20.2	18.0
1993	26351	156.2	73.0	22.9	4.1	22.9	87.8	182.2	2.00	19.9	18.4
1994	28021	155.0	76.0	20.6	3.4	22.3	81.9	179.5	2.00	20.5	17.8
1995	28567	153.9	76.7	21.0	2.3	21.3	78.4	176.4	2.10	20.9	17.4
1996	28718	154.1	77.1	20.0	2.8	21.6	79.0	177.3	2.10	20.8	17.6
1997	35326	154.4	76.0	21.0	3.0	21.4	75.8	176.3	2.10	21.0	17.4
1998	35962	154.1	76.9	20.1	3.0	20.6	76.5	175.2	2.10	21.2	17.2
1999	35387	153.5	77.2	20.4	2.5	21.6	75.6	175.7	2.10	21.3	17.2
2000	35687	153.1	77.6	20.5	2.0	21.2	75.2	174.4	2.10	21.5	16.9
2001	35119	151.9	81.6	16.6	1.8	21.0	73.1	172.6	2.10	22.0	16.6
2002	35197	151.4	82.3	15.9	1.8	20.7	74.2	172.1	2.10	21.7	16.9
2003	34513	151.0	82.8	15.3	1.8	22.3	71.2	172.5	2.10	21.8	16.7
2004	32348	150.4	84.4	13.8	1.8	25.5	66.0	173.7	2.10	22.3	16.4
2005	33351	150.4	84.2	14.3	1.5	23.8	70.7	173.6	2.10	22.7	16.1
2006	33372	149.9	84.8	14.3	0.9	22.1	67.8	170.4	2.14	24.1	15.2
2007	33751	149.5	85.5	13.8	0.6	21.8	68.6	169.6	2.15	25.0	14.6
2008	26557	150.7	83.0	15.9	1.1	25.6	62.5	174.4	2.09	24.9	14.7
2009	20271	158.6	71.8	22.5	5.6	27.4	88.7	199.7	1.83	22.3	16.4
2010	16243	154.3	78.0	20.6	1.4	29.0	65.4	183.4	1.99	25.4	14.4
2011	14030	153.2	82.2	16.6	1.2	25.4	70.1	179.9	2.03	27.1	13.5
2012	9342	154.9	75.5	23.1	1.4	37.0	58.0	191.2	1.91	26.1	14.0
2013	7478	154.9	73.7	25.3	1.0	23.4	66.6	175.3	2.08	29.2	12.5
2014	6721	156.2	72.7	25.5	1.8	25.2	66.1	177.5	2.06	30.1	12.2
2015	6688	157.0	67.8	30.2	1.9	23.2	72.8	179.7	2.03	29.6	12.3
2016	6990	156.9	67.5	31.2	1.3	20.0	74.3	176.8	2.06	30.2	12.1

Tabela 1.7: Velikost gnezda ob rojstvu, gospodarnost priraje pujskov in delež letne obnove črede svinj na farmah skupaj

Leto	Št. pras.	Št. izl.	$P_{\bar{z}}$ / gn.	KD/ gn.	G_L	KD/ $P_{\bar{z}}$	Št. svinj v čredi	Remont (%)	G_S
1980	17370	4333	9.40	191.1	1.90	20.7	9094	47.7	3.99
1981	27471	6752	9.20	192.6	1.90	21.0	14494	46.6	4.08
1982	35283	7944	9.40	183.4	1.99	19.7	16393	48.5	4.11
1983	37701	8551	9.40	178.3	2.05	19.1	18420	46.4	4.42
1984	39806	9590	9.40	179.4	2.03	19.1	19568	49.0	4.14
1985	39378	10046	9.40	181.1	2.02	19.3	19532	51.4	3.93
1986	44416	10417	9.40	175.8	2.08	18.7	21397	48.7	4.27
1987	46062	11388	9.50	178.1	2.05	18.9	22473	50.7	4.05
1988	46241	13775	9.60	180.2	2.03	18.9	22823	60.4	3.36
1989	44298	12513	9.60	178.9	2.04	18.6	21717	57.6	3.54
1990	45609	11762	9.60	173.9	2.10	18.1	21724	54.1	3.88
1991	46011	11639	9.70	172.1	2.12	17.7	21695	53.7	3.95
1992	35323	8956	9.70	176.2	2.07	18.2	17052	52.5	3.94
1993	34824	9737	9.60	179.6	2.03	18.6	17140	56.8	3.57
1994	36042	12072	9.80	181.0	2.00	18.5	17917	67.4	2.97
1995	36469	12053	9.80	179.7	2.00	18.3	18068	66.7	3.00
1996	36589	12447	9.80	179.6	2.00	18.3	18061	68.9	2.90
1997	44935	15131	9.80	178.9	2.00	18.2	22154	68.3	2.93
1998	45612	15059	9.90	177.1	2.10	17.9	22206	67.8	3.10
1999	44704	15294	9.94	178.2	2.00	17.9	21935	69.7	2.87
2000	45166	15420	10.01	178.0	2.05	17.8	22287	69.2	2.96
2001	45166	15420	10.01	178.0	2.10	17.8	22287	69.2	3.04
2002	44300	15575	9.99	179.7	2.00	18.0	22085	70.5	2.84
2003	44507	16442	10.14	180.9	2.02	17.8	22113	74.4	2.71
2004	43269	17476	10.42	183.1	1.99	17.6	21771	80.3	2.48
2005	43666	16481	10.64	181.6	2.01	17.1	21824	75.5	2.66
2006	42934	15132	11.05	177.9	2.05	16.1	21160	71.5	2.87
2007	42133	15228	11.45	177.8	2.05	15.5	20571	74.0	2.77
2008	33716	14094	11.68	187.4	1.95	16.0	17381	81.1	2.40
2009	25992	12237	11.89	212.3	1.72	17.9	15125	80.9	2.13
2010	20383	9713	12.55	193.9	1.88	15.4	10829	89.7	2.10
2011	18007	7320	13.05	193.1	1.89	14.8	9537	76.8	2.46
2012	11500	7105	13.42	198.8	1.84	14.8	6394	111.1	1.65
2013	9855	3613	13.82	187.2	1.95	13.5	5064	71.3	2.73
2014	8913	3581	14.23	187.4	1.95	13.2	4974	72.0	2.70
2015	8545	3008	14.20	188.7	1.93	13.3	4418	68.1	2.84
2016	8978	2573	14.29	183.4	1.99	12.8	4511	57.0	3.49

Tabela 1.8: Dolžina laktacije in starostna struktura po letih na farmah skupaj

Leto	DOLŽINA LAKTACIJE (dni)							P R A S I T V E		
	Lakt. (dni)	do 14 dni (%)	15-19 dni (%)	20-24 dni (%)	25-29 dni (%)	30-34 dni (%)	≥35 dni (%)	prva (%)	2.-7. (%)	≥8 (%)
1980	22.3	2.1	11.5	75.4	22.4			27.0	63.2	9.8
1981	24.1	1.6	18.3	45.5	34.6			29.8	59.6	10.7
1982	24.2	2.8	7.8	49.6	39.7			23.1	66.3	10.6
1983	23.8	3.7	4.0	55.4	37.0			23.4	65.5	11.1
1984	24.1	3.7	3.1	64.0	29.2			20.1	64.9	15.0
1985	24.6	3.0	2.4	52.6	42.0			21.4	65.7	12.9
1986	24.1	2.7	5.8	52.6	38.8			24.4	64.9	10.7
1987	24.1	2.9	3.6	58.6	34.9			20.1	70.5	9.4
1988	23.7	3.2	5.9	56.9	34.0			23.0	68.2	8.8
1989	24.7	3.8	3.0	47.2	46.0			21.6	68.3	10.1
1990	25.1	4.5	4.0	39.5	52.0			20.9	68.3	10.8
1991	24.5	4.4	4.3	45.8	45.5			20.3	65.4	14.3
1992	25.8	4.5	1.6	28.6	65.2			19.6	63.7	16.9
1993	26.5	4.9	0.8	25.4	68.9			23.3	64.2	12.5
1994	26.6	5.0	0.9	26.6	53.5	11.8	5.5	25.3	59.0	15.6
1995	25.3	5.1	0.9	31.7	48.8	8.0	5.4	25.4	60.1	14.5
1996	26.1	5.9	0.9	31.4	47.5	8.6	5.6	25.3	60.0	14.7
1997	26.1	5.2	0.5	37.4	41.3	7.7	7.5	25.3	60.3	14.4
1998	26.1	5.4	1.1	34.0	44.6	7.5	7.4	25.3	60.3	14.3
1999	25.6	5.8	2.4	39.5	38.2	6.8	7.2	24.9	60.9	14.3
2000	25.6	6.2	1.8	39.2	38.8	5.6	8.3	25.8	60.8	13.5
2001	25.8	6.2	3.3	36.8	38.8	7.0	7.9	25.6	60.6	13.8
2002	24.8	5.6	8.3	39.2	34.9	6.2	5.8	26.1	58.9	15.0
2003	24.3	6.0	11.5	35.9	37.9	4.8	3.9	27.0	56.9	16.0
2004	24.3	7.0	8.4	40.0	33.8	5.7	5.0	28.5	58.7	12.9
2005	24.4	7.7	10.6	37.1	32.9	5.5	6.1	27.1	62.6	10.3
2006	24.7	8.4	6.8	36.2	37.1	4.5	7.0	25.8	64.4	9.8
2007	24.7	7.1	5.1	39.0	37.7	3.3	7.8	24.7	64.2	11.1
2008	25.5	7.6	3.8	35.0	37.5	4.8	11.3	25.2	62.6	12.2
2009	26.6	12.8	2.2	14.1	44.3	13.1	13.5	26.2	62.8	11.0
2010	28.4	8.1	1.4	10.9	52.1	12.5	15.0	23.7	65.9	10.5
2011	28.8	4.2	1.2	10.1	59.1	10.7	14.7	25.5	63.5	11.0
2012	29.5	4.3	3.5	10.0	40.1	17.1	25.0	19.0	69.1	11.9
2013	29.9	2.6	1.8	18.0	41.3	9.7	26.6	27.6	62.7	9.7
2014	30.3	2.2	1.3	18.8	37.6	12.2	28.0	26.6	64.5	8.9
2015	31.2	2.3	0.8	17.4	33.4	13.8	32.2	24.6	69.7	5.7
2016	31.2	2.5	1.2	16.1	32.4	14.9	32.8	24.2	67.0	8.8

1.4 Interim obdobje in podstavitveni premor

Tabela 1.9: Interim obdobje po letih na farmah skupaj

Leto	PRVESNICE				STARE SVINJE			
	IO (dni)	do 12 dni (%)	12-40 dni (%)	≥41 dni (%)	IO (dni)	do 12 dni (%)	12-40 dni (%)	≥41 dni (%)
1980								
1981	16.2	52.8	35.0	12.1	8.7	80.5	15.9	3.7
1982	18.0	56.9	31.3	11.8	8.5	84.8	12.4	2.8
1983	18.5	61.7	24.9	13.4	8.7	88.2	9.2	2.6
1984	19.3	61.4	24.1	14.5	9.2	86.5	10.6	2.9
1985	18.8	60.6	25.8	13.6	8.7	88.2	9.2	2.6
1986	16.6	66.6	21.9	11.4	8.6	88.0	10.0	2.0
1987	18.9	62.6	23.6	13.8	8.8	87.3	10.2	2.5
1988	17.3	65.2	22.9	11.9	9.0	86.7	10.6	2.7
1989	17.2	64.4	23.8	11.8	8.7	86.9	10.6	2.5
1990	15.7	67.9	22.1	10.0	8.4	87.5	10.4	2.1
1991	14.7	70.0	21.1	8.9	8.1	88.1	10.1	1.8
1992	15.4	68.0	21.7	10.2	8.0	88.3	9.8	1.8
1993	14.4	71.1	19.5	9.4	7.9	88.2	10.1	1.7
1994	14.3	70.6	19.7	9.7	7.9	88.0	10.2	1.8
1995	16.0	65.1	23.5	11.3	8.1	86.3	12.0	1.7
1996	16.2	66.4	21.6	12.0	8.1	86.2	11.8	2.0
1997	15.6	64.4	25.8	10.0	8.4	85.6	12.4	1.9
1998	15.3	64.4	26.8	8.9	8.3	86.3	11.7	2.0
1999	15.8	63.1	26.9	9.9	8.3	85.5	12.6	1.7
2000	15.2	63.2	28.3	8.4	8.2	85.6	12.8	1.6
2001	13.1	72.4	20.3	7.4	7.5	88.2	10.3	1.4
2002	11.7	76.5	17.6	5.9	7.5	88.9	9.8	1.3
2003	11.8	77.8	16.0	6.3	7.7	88.2	10.4	1.2
2004	11.8	78.1	16.0	5.9	7.6	88.0	10.6	1.4
2005	12.9	73.0	20.1	6.9	7.7	87.1	11.6	1.3
2006	13.1	70.0	23.9	6.1	7.4	89.7	9.1	1.2
2007	12.1	73.4	21.1	5.5	7.3	89.5	9.6	0.9
2008	12.3	75.5	17.8	6.7	7.9	87.0	11.6	1.4
2009	15.6	69.5	19.4	11.1	11.4	76.7	18.0	5.3
2010	12.2	77.2	15.7	7.1	8.8	83.6	13.6	2.8
2011	9.2	84.9	11.6	3.5	7.5	88.4	10.0	1.6
2012	9.7	84.5	11.4	4.1	8.1	86.5	11.8	1.7
2013	7.8	86.8	12.0	1.2	6.9	88.4	11.4	0.2
2014	7.2	89.7	9.6	0.7	7.3	88.3	11.1	0.6
2015	8.1	87.2	10.8	2.0	7.0	88.9	10.9	0.2
2016	7.9	86.3	11.9	1.8	7.0	87.1	12.6	0.3

Tabela 1.10: Poodstavitveni premor po letih na farmah skupaj

Leto	PRVESNICE					STARE SVINJE				
	Št. svinj	PP (dni)	do 12 dni (%)	13-60 dni (%)	≥61 dni (%)	Št. svinj	PP (dni)	do 12 dni (%)	13-60 dni (%)	≥61 dni (%)
1980										
1981	4390	28.4	45.6	40.1	14.3	10658	15.6	74.5	20.2	5.3
1982	6766	27.9	45.6	41.7	12.8	20471	15.3	72.3	20.9	6.8
1983	8361	26.3	50.5	35.3	14.2	30041	14.7	75.3	19.1	5.6
1984	9138	27.0	48.5	26.1	25.4	32935	14.8	74.1	21.5	4.4
1985	8525	25.1	50.0	40.3	9.7	33312	14.2	76.0	20.1	3.9
1986	11470	23.5	54.4	36.3	9.3	33511	14.2	75.1	20.8	4.1
1987	11422	27.1	49.3	37.8	12.9	38853	14.9	73.7	22.2	4.1
1988	11259	25.4	52.2	36.9	10.9	36990	15.3	73.0	22.4	4.6
1989	11623	25.2	51.4	38.4	10.2	35994	15.0	73.1	22.5	4.4
1990	10982	23.6	54.4	35.8	9.8	37353	14.5	73.7	22.2	4.1
1991	11151	22.3	56.5	24.6	18.9	37410	13.4	75.2	21.6	3.2
1992	8262	23.3	53.3	37.4	9.2	31211	14.5	73.1	23.0	4.0
1993	8645	23.0	54.8	36.0	9.2	29954	14.8	72.0	24.1	3.9
1994	8975	20.7	58.0	31.2	7.4	29322	13.5	74.6	21.9	3.5
1995	7897	20.9	55.5	38.4	6.0	29316	12.5	75.3	22.3	2.6
1996	7700	20.8	57.3	35.5	7.2	29179	11.9	76.7	21.3	2.0
1997	9728	20.3	55.9	38.0	6.3	35329	12.6	75.8	21.4	2.8
1998	9913	20.3	55.4	37.8	6.8	35911	12.2	77.1	20.2	2.8
1999	9437	20.6	54.7	39.1	6.5	35615	12.3	76.0	21.7	2.5
2000	9764	19.5	55.5	39.5	5.1	35305	11.8	76.9	21.1	1.8
2001	9180	16.8	64.2	31.3	4.5	34866	10.7	80.1	18.4	1.5
2002	9174	16.5	65.5	30.7	3.8	35334	10.8	80.6	17.9	1.5
2003	9765	16.6	66.4	29.4	4.4	34079	11.1	79.9	18.2	1.8
2004	9797	15.2	69.5	26.2	4.3	30365	10.3	80.9	17.5	1.6
2005	10338	16.1	65.8	29.9	4.3	30709	10.4	80.6	17.7	1.7
2006	9206	15.4	64.8	32.3	2.9	31676	9.6	84.2	14.6	1.2
2007	8251	14.5	67.7	30.0	2.3	31667	9.3	83.8	15.6	0.6
2008	6966	14.3	70.4	26.4	3.2	24054	9.7	82.2	16.7	1.1
2009	5835	23.4	61.1	27.6	11.3	20287	18.1	68.6	24.1	7.3
2010	4106	14.5	73.6	21.6	4.8	14917	10.5	79.8	18.5	1.7
2011	3814	10.9	81.5	16.6	1.9	12719	9.0	85.1	13.5	1.4
2012	2076	12.6	79.1	17.1	3.8	8768	9.9	82.0	16.5	1.5
2013	2152	9.7	81.6	17.7	0.7	6500	8.3	84.4	15.2	0.4
2014	2214	9.9	84.9	12.9	2.2	6099	9.1	84.4	14.3	1.3
2015	1755	11.2	83.2	13.8	3.0	6273	9.8	84.1	14.0	1.9
2016	1944	10.5	82.1	15.5	2.4	6140	9.1	82.7	15.9	1.4

1.5 Analiza izločitev

Tabela 1.11: Izločitve svinj po letih na farmah skupaj

Leto	MLADICE							STARE SVINJE					
	Št. izl.	DOI (dni)	Izločitve		Vzrok izločitve			Št. izl.	DI (dni)	Izločitve		Vzrok izločitve	
			pred	po pr.	8	9	10			pred	po pr.	9	10
1980	1264	143.0				38.4	5.5	3069	102.7	37.0	63.0	31.1	14.7
1981	1350	142.3				28.1	17.0	5402	109.7	38.8	61.2	26.0	17.9
1982	1302	144.6				51.5	17.2	6642	90.7	51.5	48.5	20.3	12.2
1983	1938	140.8				45.0	9.7	6944	88.6	51.2	48.8	20.7	9.5
1984	1450	148.0				42.3	15.6	8247	91.8	52.6	47.4	20.4	11.0
1985	1820	139.7				47.9	18.7	8615	92.9	45.1	54.9	20.3	14.7
1986	1947	129.3				47.1	19.8	8945	84.5	49.8	50.2	19.0	11.1
1987	2076	134.6				42.8	19.3	10087	87.8	45.0	55.0	16.7	14.4
1988	2502	129.0						11443	80.3	55.2	44.8	15.9	12.6
1989	2130	120.8						9979	85.5	49.3	50.7	17.4	15.1
1990	1917	118.2						10106	77.7	54.3	45.7	14.4	14.1
1991	1748	121.1						10075	77.1	54.5	45.5	14.8	14.1
1992	1605	116.1						7940	87.6	87.6	44.2	18.2	20.1
1993	3739	102.2				18.7	18.8	7852	87.6	44.7	55.3	15.7	22.2
1994	3944	87.8	61.5	38.5	49.9	15.4	12.5	7670	86.4	47.5	52.5	14.1	20.6
1995	4409	89.4	62.4	37.6	45.1	15.7	11.8	7805	82.7	51.4	48.6	13.3	19.8
1996	4121	82.1	67.8	32.2	51.6	12.7	9.7	7066	85.9	49.3	50.7	16.8	17.2
1997	5769	81.4	69.5	30.5	53.5	14.1	8.0	9620	79.5	55.7	44.3	16.1	13.4
1998	5584	78.5	71.4	28.6	57.7	13.1	6.6	9636	80.3	55.2	44.8	14.1	14.4
1999	5576	81.1	70.2	29.8	53.5	14.7	7.4	9489	81.3	53.8	46.2	15.4	15.4
2000	5991	83.4	69.0	31.0	55.3	15.4	8.5	9723	77.8	54.6	45.4	15.7	13.9
2001	5958	83.4	68.5	31.5	53.1	17.4	6.9	8877	79.5	48.8	51.2	19.1	14.9
2002	6328	83.2	67.1	32.9	49.8	19.6	5.5	9274	76.6	50.3	49.7	18.2	13.1
2003	6366	86.3	70.0	30.0	47.6	16.9	5.2	11339	68.3	60.6	39.4	14.4	10.3
2004	6441	88.6	63.4	36.6	41.7	20.4	4.7	10660	72.7	60.2	39.8	9.4	9.7
2005	5816	85.9	69.9	30.1	46.0	13.7	5.3	10125	72.9	61.1	38.9	11.4	9.9
2006	5639	84.5	69.9	30.1	52.5	15.3	5.0	9147	73.1	59.7	40.3	10.8	11.7
2007	5370	83.9	77.1	22.9	56.3	11.2	3.9	9297	70.8	63.0	37.0	10.2	11.0
2008	4718	93.9	71.4	28.6	45.7	14.8	2.7	9175	64.9	71.5	28.5	9.7	6.6
2009	4649	104.8	66.2	33.8	37.4	15.7	4.3	8363	100.1	68.8	31.2	9.1	5.7
2010	2296	104.4	69.0	31.0	53.8	17.2	2.4	5811	72.5	69.0	31.0	11.9	5.1
2011	2360	98.5	74.6	25.4	46.6	10.9	2.6	4826	73.6	69.2	30.8	10.5	3.8
2012	1241	104.4	71.8	28.2	55.2	10.9	2.7	4946	62.4	78.1	21.9	5.6	3.6
2013	1326	96.5	75.3	24.7	55.7	10.2	4.4	2327	66.4	67.9	32.1	8.8	6.6
2014	1100	98.2	71.2	28.8	53.5	10.2	4.9	2466	67.1	69.4	30.6	8.7	5.5
2015	917	93.9	62.4	37.6	48.4	14.9	8.8	1914	75.7	60.9	39.1	12.4	7.8
2016	846	97.4	65.0	35.0	49.3	15.2	6.5	1851	74.6	62.7	37.3	10.5	7.4

Poglavje 2

Primerjava plodnosti med farmami v letu 2016

2.1 Velikost gnezda

Tabela 2.1: Velikost gnezda na farmah

Rejec	MLADICE			STARE SVINJE						SKUPAJ		
	Št. pras.	DOP (dni)	$P_{\bar{z}}$ /gn.	Št. pras.	DMP (dni)	Lakt. (dni)	IO (dni)	PP (dni)	$P_{\bar{z}}$ /gn.	Št. pras.	$P_{O/}$ gn.	Izgube (%)
2	1084	163.4	13.20	3853	156.0	30.9	7.5	8.3	15.10	4937	12.38	15.7
3	251	188.7	12.38	1003	157.1	24.5	7.9	15.7	12.27	1254	10.55	14.1
8	658	165.7	13.16	2156	157.9	34.7	5.8	5.8	14.79	2814	12.01	16.7
Sk.	1993	167.3	13.09	7012	156.7	31.2	7.1	8.6	14.60	9005	12.01	15.8

2.2 Analiza pripustov

Tabela 2.2: Analiza pripustov mladic na farmah

Rejec	SKUPAJ							PRVI PRIPUST				DRUGI IN VIŠJI			
	Št. pr.	Usp. pr. (%)	Izl. po pr. (%)	Preg. (%)	DPI (dni)	DPP (dni)	$P_{\bar{z}}$ /pr.	Št. pr.	Prvi (%)	Usp. (%)	$P_{\bar{z}}$ /pr.	Št. pr.	≥ 2 (%)	Usp. (%)	$P_{\bar{z}}$ /pr.
2	1278	85.1	12.0	3.0	67.3	25.9	11.3	1238	96.9	85.6	11.3	40	3.1	67.5	8.4
3	368	67.9	6.0	21.5	65.3	42.3	8.4	276	75.0	68.1	8.5	92	25.0	67.4	8.0
8	773	84.7	15.3		69.5		11.2	773	100.0	84.7	11.2	0			
Sk.	2419	82.4	12.1	4.8	68.1	37.0	10.8	2287	94.5	83.2	10.9	132	5.5	67.4	8.1

Tabela 2.3: Analiza pripustov starih svinj na farmah

Rejec	SKUPAJ							PRVI PRIPUST				DRUGI IN VIŠJI			
	Št. prip.	Usp. prip. (%)	Izl. po prip. (%)	Preg. (%)	DPI (dni)	DPP (dni)	$P_{\bar{z}}$ /prip.	Št. prip.	Prvi (%)	Usp. (%)	$P_{\bar{z}}$ /prip.	Št. prip.	≥ 2 (%)	Usp. (%)	$P_{\bar{z}}$ /prip.
2	4308	89.3	7.2	3.5	77.0	28.1	13.5	4163	96.6	89.9	13.6	145	3.4	72.4	10.5
3	1380	70.7	6.6	18.8	49.9	39.9	8.7	1116	80.9	74.4	9.2	264	19.1	55.3	6.7
8	2396	88.8	11.2		79.7		13.1	2396	100.0	88.8	13.1	0			
Sk.	8084	86.0	8.3	5.1	74.4	35.6	12.6	7675	94.9	87.3	12.8	409	5.1	61.4	8.0

Tabela 2.4: Distribucija pregonitev na farmah

Rejec	MLADICE					STARE SVINJE				
	Št. preg.	DPP (dni)	do 25. dne (%)	25-40 dni (%)	po 40. dnevu (%)	Št. preg.	DPP (dni)	do 25. dne (%)	25-40 dni (%)	po 40. dnevu (%)
2	38	25.9	65.8	26.3	7.9	151	28.1	60.3	19.9	19.9
3	79	42.3	40.5	10.1	49.4	260	39.9	36.5	26.2	37.3
8	0					0				
Sk.	117	37.0	48.7	15.4	35.9	411	35.6	45.3	23.8	30.9

2.3 Analiza reprodukcijskega ciklusa

Tabela 2.5: Starost mladic ob pravitvi in število krmnih dni na živorojenega pujska pri mladich na farmah

Rejec	Št. pras.	Starost ob pravitvi			Izl. (%)	pred prip. (%)	po prip. (%)	Starost ob izl.	kDOP (dni)	KD/ $P_{\bar{z}}$		
		1.prip. pras.	do 360 dni (%)	361-420 dni (%)							≥ 421 dni (%)	
2	1081	246.2	364.0	46.3	53.7	0.0	31.5	70.0	30.0	289.2	204.9	15.4
3	238	254.7	382.9	31.1	55.0	13.9	7.3	10.0	90.0	336.4	204.5	16.7
8	669	248.2	365.4	36.8	63.2	0.0	30.2	60.3	39.7	303.0	210.1	15.9
Sk.	1988	247.9	366.7	41.2	57.1	1.7	28.7	65.0	35.0	295.4	206.6	15.7

Tabela 2.6: Doba med pravitvama in število krmnih dni na pujska na farmah

Rejec	Št. pras.	DMP (dni)	Doba med pravitvama			Izl. (%)	DI (dni)	kDMP (dni)	G_L	$P_{\bar{z}}/$ leto	KD/ $P_{\bar{z}}$
			do 160 dni (%)	161-200 dni (%)	≥ 201 dni (%)						
2	3865	156.0	68.0	31.5	0.4	20.8	69.6	174.4	2.09	31.6	11.6
3	1007	157.7	76.4	16.1	7.5	17.1	65.1	179.8	2.03	25.1	14.6
8	2118	158.0	62.2	37.8	0.0	20.0	87.2	179.8	2.03	30.1	12.1
Sk.	6990	156.9	67.5	31.2	1.3	20.0	74.3	176.8	2.06	30.2	12.1

Tabela 2.7: Velikost gnezda ob rojstvu, gospodarnost priraje pujskov in delež letne obnove črede svinj na farmah

Rejec	Št. pras.	Št. izl.	$P_{\bar{z}}/$ gn.	KD/ $P_{\bar{z}}$	G_L	KD/ $P_{\bar{z}}$	Št. svinj v čredi	Remont (%)	G_S
3	1245	240	12.33	184.5	1.98	15.0	629	38.1	5.19
8	2787	820	14.44	187.1	1.95	13.0	1428	57.4	3.40
Sk.	8978	2573	14.29	183.4	1.99	12.8	4511	57.0	3.49

Tabela 2.8: Dolžina laktacije in starostna struktura na farmah

Rejec	DOLŽINA LAKTACIJE							PRASITVE		
	Lakt. (dni)	do 14 dni (%)	15-19 dni (%)	20-24 dni (%)	25-29 dni (%)	30-34 dni (%)	≥35 dni (%)	prva (%)	2.-7. (%)	≥8 (%)
2	30.9	2.3	1.2	16.0	36.6	12.3	31.6	24.4	68.1	7.5
3	24.6	5.1	2.9	38.7	48.3	2.4	2.6	17.6	56.4	26.0
8	34.8	1.7	0.4	5.4	16.9	25.8	49.8	26.6	69.9	3.5
Sk.	31.2	2.5	1.2	16.1	32.4	14.9	32.8	24.2	67.0	8.8

2.4 Interim obdobje in podstavitveni premor

Tabela 2.9: Interim obdobje na farmah

Rejec	PRVESNICE				STARE SVINJE			
	IO (dni)	do 12 dni (%)	12-40 dni (%)	≥41 dni (%)	IO (dni)	do 12 dni (%)	12-40 dni (%)	≥41 dni (%)
2	9.5	85.7	13.8	0.5	7.5	85.5	14.4	0.1
3	12.3	76.5	13.6	9.9	7.6	90.4	8.1	1.6
8	5.7	92.3	7.7	0.0	5.9	87.9	12.1	0.0
Sk.	7.9	86.3	11.9	1.8	7.0	87.1	12.6	0.3

Tabela 2.10: Podstavitveni premor na farmah

Rejec	PRVESNICE					STARE SVINJE				
	Št. svinj	PP (dni)	do 12 dni (%)	13-60 dni (%)	≥61 dni (%)	Št. svinj	PP (dni)	do 12 dni (%)	13-60 dni (%)	≥61 dni (%)
2	1045	8.9	82.7	17.2	0.1	3263	8.3	82.4	17.6	0.0
3	302	25.6	59.6	25.2	15.2	1078	16.7	74.9	17.2	7.9
8	597	5.7	92.3	7.7	0.0	1799	5.9	87.9	12.1	0.0
Sk.	1944	10.5	82.1	15.5	2.4	6140	9.1	82.7	15.9	1.4

2.5 Analiza izločitev

Tabela 2.11: Izločitve svinj na farmah

Rejec	MLADICE							STARE SVINJE					
	Št. izl.	DOI (dni)	Izločitve		Vzrok izločitve			Št. izl.	DI (dni)	Izločitve		Vzrok izločitve	
			pred	po pr.	8	9	10			pred	po pr.	9	10
2	528	89.6	71.2	28.8	50.0	14.8	1.7	1056	68.7	70.3	29.7	9.7	3.2
3	27	173.2	3.7	96.3	7.4	7.4	11.1	194	75.1	53.1	46.9	3.1	10.8
8	291	104.5	59.5	40.5	51.9	16.8	14.8	601	84.7	52.6	47.4	14.5	13.6
Sk.	846	97.4	65.0	35.0	49.3	15.2	6.5	1851	74.6	62.7	37.3	10.5	7.4

Poglavje 3

Farma Kočevje

3.1 Velikost gnezda

Tabela 3.1: Velikost gnezda po letih na farmi Kočevje

Leto	MLADICE			STARE SVINJE						SKUPAJ		
	Št. pras.	DOP (dni)	$P_{\bar{z}}$ /gn.	Št. pras.	DMP (dni)	Lakt. (dni)	IO (dni)	PP (dni)	$P_{\bar{z}}$ /gn.	Št. pras.	P_O /gn.	Izgube (%)
1980	875	163.9	8.70	2036	153.3	22.3	7.6	16.2	9.80	2911	8.65	8.6
1981	614	152.3	8.25	2598	153.8	23.5	7.0	14.9	9.48	3212	8.56	7.4
1982	702	147.6	8.13	2460	153.5	24.1	6.5	14.6	9.35	3162	7.92	12.8
1983	772	149.3	8.09	2665	152.3	22.8	7.4	14.6	9.35	3437	7.77	14.3
1984	729	153.5	8.51	3030	151.2	23.7	6.8	12.8	9.54	3759	8.27	11.5
1985	640	143.4	8.13	3052	150.8	23.5	7.0	12.7	9.63	3692	8.23	12.2
1986	717	139.0	7.91	3073	150.2	21.9	6.8	13.3	9.63	3790	8.29	11.0
1987	704	135.4	7.92	3142	150.1	22.9	6.2	12.2	9.87	3846	8.40	11.7
1988	692	130.7	8.07	3094	151.2	23.5	7.0	12.7	9.85	3786	8.32	12.7
1989	602	135.7	8.13	2841	151.1	25.1	6.4	11.3	9.92	3443	8.39	12.7
1990	625	140.6	8.06	2617	153.9	27.9	5.6	10.8	10.13	3242	8.36	14.1
1991	599	144.3	8.28	2592	153.6	27.1	6.2	11.1	10.25	3191	8.60	13.0
1992	626	140.9	8.46	2626	152.6	26.9	6.7	10.6	10.50	3252	8.36	17.3
1993	781	139.3	8.60	2540	154.5	28.0	6.8	11.1	10.32	3321	8.15	17.8
1994	709	132.9	8.74	2712	152.5	25.8	7.2	10.7	10.35	3421	8.46	15.6
1995	705	126.5	8.79	3013	150.9	25.0	7.4	10.2	10.48	3718	8.57	15.6
1996	664	129.3	8.81	2780	151.1	25.2	7.2	10.3	10.07	3444	8.55	13.0
1997	810	129.8	8.84	2709	154.2	26.2	8.1	12.7	9.90	3519	8.58	11.2
1998	724	126.6	8.83	2844	152.8	25.4	7.9	12.3	9.93	3568	8.62	11.1
1999	608	134.2	8.72	2958	153.1	25.6	8.4	12.4	10.11	3566	8.69	12.0
2000	666	133.7	8.45	2922	153.0	24.7	8.7	13.2	9.98	3588	8.35	13.9
2001	579	140.6	8.59	2764	155.0	27.9	7.9	12.1	10.10	3343	8.55	12.6
2002	638	152.7	9.21	2798	153.2	26.7	7.0	11.0	10.11	3436	8.84	11.1
2003	1005	155.1	9.65	2607	149.9	24.8	6.0	9.9	9.92	3657	8.60	12.7
2004	1437	157.7	10.34	2941	149.5	24.9	6.8	9.1	10.69	4378	9.12	13.8
2005	1284	160.3	10.52	4204	149.2	24.2	7.7	8.9	11.33	5488	9.78	12.2
2006	1259	156.1	11.31	4573	149.3	25.6	6.7	7.5	12.16	5832	10.40	13.2
2007	1229	152.9	11.69	4649	150.2	26.7	6.6	7.3	12.77	5878	11.01	12.2
2008	1146	159.4	12.44	4280	154.8	31.0	7.0	7.9	13.80	5426	11.99	11.3
2009	1045	158.1	12.41	3956	157.5	32.3	7.8	9.0	14.47	5001	12.64	10.0
2010	1228	165.7	12.79	3974	156.9	31.9	7.8	8.7	14.52	5202	12.69	10.1
2011	943	167.9	12.92	4168	155.0	30.9	6.8	7.6	14.75	5111	13.08	9.2
2012	913	166.3	13.14	3801	156.7	31.8	7.6	8.6	14.57	4714	12.75	10.8
2013	1121	168.2	13.15	3579	156.6	31.2	7.6	9.0	14.75	4700	13.11	8.8
2014	933	171.6	13.18	3962	156.3	31.0	7.8	8.8	15.09	4895	13.17	10.6
2015	1108	168.4	13.08	3756	157.0	31.5	7.5	8.8	14.68	4864	12.50	12.7
2016	1084	163.4	13.20	3853	156.0	30.9	7.5	8.3	15.10	4937	12.38	15.7

3.2 Analiza pripustov

Tabela 3.2: Analiza pripustov mladic po letih na farmi Kočevje

Leto	S K U P A J							PRVI PRIPUST				DRUGI IN VIŠJI			
	Št. pr.	Usp. pr. (%)	Izl. po pr. (%)	Preg. (%)	DPI (dni)	DPP (dni)	$P_{\bar{z}}$ /pr.	Št. pr.	Prvi (%)	Usp. (%)	$P_{\bar{z}}$ /pr.	Št. pr.	≥ 2 (%)	Usp. (%)	$P_{\bar{z}}$ /pr.
1980	1512	57.9	9.3	32.8	87.2	36.6	5.0								
1981	953	64.4	12.8	22.8	89.1	42.2	5.3	736	77.2	64.7	5.4	217	22.8	63.6	5.1
1982	1111	60.6	14.5	24.9	72.0	35.0	4.9	833	75.0	61.6	5.0	278	25.0	57.5	4.7
1983	1128	68.2	13.3	17.9	75.1	30.8	5.5	929	82.4	69.6	5.6	199	17.6	61.3	5.3
1984	985	73.4	12.0	12.9	71.0	35.8	6.3	849	86.2	75.5	6.4	136	13.8	60.3	5.5
1985	853	75.4	11.2	12.7	79.3	34.7	6.1	752	88.2	77.8	6.3	101	11.8	57.4	4.9
1986	1029	69.9	12.3	16.3	63.9	32.6	5.6	847	82.3	70.7	5.6	182	17.7	65.9	5.6
1987	996	71.8	10.5	17.0	71.6	37.4	5.7	832	83.5	71.9	5.7	164	16.5	71.3	5.8
1988	962	71.1	10.6	17.8	72.2	35.4	5.7	811	84.3	71.8	5.8	151	15.7	67.6	5.6
1989	962	63.0	15.6	20.7	65.4	32.9	5.1	770	80.0	64.3	5.1	192	20.0	57.8	5.1
1990	959	65.1	16.7	17.3	62.3	36.4	5.2	802	83.6	65.5	5.2	157	16.4	63.1	5.7
1991	820	72.4	13.1	14.1	63.2	31.0	6.0	696	84.9	73.1	6.0	124	15.1	68.6	5.9
1992	831	76.3	13.5	9.9	56.2	28.1	6.4	739	88.9	77.7	6.5	92	11.1	65.2	5.8
1993	1001	77.6	11.9	10.0	74.3	25.6	6.7	906	90.5	78.2	6.7	95	9.5	72.6	6.8
1994	867	61.6	11.3	7.0	61.7	27.8	7.0	796	91.8	81.7	7.1	71	8.2	71.8	6.5
1995	784	88.5	6.8	4.2	68.5	26.1	7.8	750	95.7	89.1	7.8	34	4.3	76.5	6.6
1996	812	83.5	10.0	6.3	79.8	29.7	7.3	765	94.2	83.9	7.3	47	5.8	76.6	7.1
1997	976	83.3	9.4	6.4	59.7	29.0	7.4	913	93.5	84.4	7.5	63	6.5	66.7	6.2
1998	848	84.2	9.9	5.3	62.8	30.0	7.4	799	94.2	84.4	7.4	49	5.8	81.6	8.0
1999	748	82.9	9.6	7.2	73.4	28.3	7.2	692	92.5	83.8	7.3	56	7.5	71.4	6.2
2000	778	84.8	9.0	5.5	72.4	28.4	7.2	737	94.7	85.1	7.2	41	5.3	80.5	7.3
2001	725	81.0	12.7	5.9	70.6	26.5	7.0	678	93.5	81.4	7.0	47	6.5	74.5	7.4
2002	784	79.7	10.6	9.4	71.6	31.4	7.3	715	91.2	79.7	7.3	69	8.8	79.7	7.6
2003	1366	76.1	14.4	9.5	72.0	27.5	7.3	1233	90.3	76.7	7.4	133	9.7	69.9	7.2
2004	1731	83.0	13.1	3.9	70.0	22.6	8.6	1663	96.1	83.6	8.6	68	3.9	69.1	7.2
2005	1553	84.9	13.0	2.1	75.3	23.0	8.9	1516	97.6	85.4	9.0	37	2.4	67.6	6.6
2006	1471	86.8	11.8	1.4	76.6	23.8	9.8	1451	98.6	87.1	9.8	20	1.4	65.0	7.9
2007	1381	88.8	10.3	0.9	79.8	32.7	10.4	1372	99.3	88.9	10.4	9	0.7	77.8	9.4
2008	1299	87.8	10.9	1.2	76.2	25.8	10.9	1278	98.4	88.4	11.0	21	1.6	52.4	6.5
2009	1175	89.4	8.7	2.0	75.9	24.0	11.1	1154	98.2	89.8	11.1	21	1.8	66.7	8.3
2010	1363	90.3	8.1	1.6	83.1	21.7	11.6	1341	98.4	90.8	11.6	22	1.6	63.6	8.4
2011	1066	89.4	9.6	1.0	97.9	21.5	11.5	1053	98.8	89.6	11.6	13	1.2	69.2	9.3
2012	1013	88.5	9.6	1.9	75.2	23.9	11.6	997	98.4	88.6	11.6	16	1.6	87.5	12.5
2013	1315	84.9	12.6	2.6	71.2	23.8	11.2	1280	97.3	85.3	11.2	35	2.7	68.6	9.0
2014	911	81.7	14.5	3.8	71.4	26.1	10.8	881	96.7	82.0	10.8	30	3.3	73.3	10.9
2015	1302	85.7	12.7	1.6	72.4	26.1	11.2	1277	98.1	86.1	11.3	25	1.9	64.0	8.9
2016	1278	85.1	12.0	3.0	67.3	25.9	11.3	1238	96.9	85.6	11.3	40	3.1	67.5	8.4

Tabela 3.3: Analiza pripustov starih svinj po letih na farmi Kočevje

Leto	S K U P A J							PRVI PRIPUST				DRUGI IN VIŠJI			
	Št. prip.	Usp. prip. (%)	Izl. po prip. (%)	Preg. (%)	DPI (dni)	DPP (dni)	$P_{\bar{z}}$ / prip.	Št. prip.	Prvi (%)	Usp. (%)	$P_{\bar{z}}$ / prip.	Št. prip.	≥ 2 (%)	Usp. (%)	$P_{\bar{z}}$ / prip.
1980	3198	63.7	6.3	30.0	57.0	31.9	6.2	2337	73.1	68.3	6.7	861	26.9	50.6	4.9
1981	3789	68.6	6.8	24.7	66.5	31.1	6.5	2882	76.1	72.1	6.8	907	23.9	57.2	5.6
1982	3566	67.4	9.5	23.1	68.2	31.9	6.3	2659	74.6	72.4	6.8	907	25.4	52.7	4.9
1983	3721	71.2	8.6	19.6	72.2	31.5	6.2	2904	78.0	73.8	6.9	817	22.0	61.9	6.0
1984	4167	72.2	8.4	18.2	79.9	32.3	6.9	3372	80.9	75.1	7.1	795	19.1	60.1	6.1
1985	4197	72.9	7.9	18.1	81.3	30.8	7.0	3420	81.5	76.3	7.3	777	18.5	58.0	5.7
1986	4377	71.1	7.0	21.1	72.6	30.0	6.9	3444	78.7	73.3	7.0	933	21.3	63.3	6.4
1987	4283	73.7	6.8	18.7	73.1	30.1	7.3	3469	81.0	75.3	7.4	814	19.0	66.8	6.8
1988	4175	73.6	7.8	17.9	75.0	30.3	7.2	3431	82.2	76.1	7.5	744	17.8	62.0	6.2
1989	3986	71.7	9.0	18.2	61.5	28.5	7.1	3256	81.7	74.6	7.4	730	18.3	58.8	5.8
1990	3777	69.4	10.6	19.2	62.8	29.4	7.0	3046	80.7	73.2	7.4	731	19.4	53.2	5.3
1991	3470	74.8	7.7	16.9	62.7	27.9	7.7	2876	82.9	77.0	7.9	594	17.1	64.5	6.6
1992	3414	76.6	7.6	15.5	62.0	27.5	8.0	2904	85.1	78.6	8.3	510	14.9	65.5	6.9
1993	3456	73.7	9.7	16.1	59.9	26.4	7.6	2880	83.3	75.7	7.8	576	16.7	63.5	6.7
1994	3398	79.5	6.5	13.3	68.4	27.1	8.2	2945	86.7	80.7	8.3	453	13.3	72.0	7.6
1995	3574	84.3	5.1	9.9	64.7	28.5	8.8	3209	89.8	85.0	8.9	365	10.2	78.6	8.4
1996	3522	78.7	7.4	13.2	68.7	26.9	7.9	3085	87.6	79.6	8.0	437	12.4	72.1	7.4
1997	3490	77.7	6.1	15.7	72.4	27.3	7.7	2924	83.8	79.3	7.8	566	16.2	68.9	6.9
1998	3594	78.7	4.9	15.7	67.8	27.9	7.8	3041	84.6	80.0	7.9	553	15.4	71.4	7.3
1999	3754	78.7	5.9	14.6	67.3	29.2	8.0	3193	85.1	81.0	8.2	561	14.9	66.0	6.8
2000	3711	79.1	6.1	14.5	67.5	28.4	7.9	3157	85.1	80.2	8.0	554	14.9	72.7	7.5
2001	3537	78.9	5.8	14.8	70.2	29.0	8.0	3017	85.3	80.9	8.1	520	14.7	67.5	7.0
2002	3501	79.2	6.9	13.3	68.7	29.7	8.0	3006	85.9	80.9	8.2	495	14.1	68.7	7.0
2003	3564	73.3	11.2	15.4	62.5	27.4	7.3	3031	85.0	74.2	7.3	533	15.0	68.5	7.2
2004	3647	80.6	10.4	8.9	69.1	26.8	8.6	3305	90.6	81.6	8.7	342	9.4	71.6	7.9
2005	4799	87.9	7.9	4.2	82.5	30.1	9.9	4596	95.8	88.5	10.0	203	4.2	75.9	8.9
2006	5115	91.1	6.1	2.8	81.3	31.3	11.1	4968	97.1	91.4	11.1	147	2.9	80.3	9.8
2007	5007	92.7	4.9	2.4	79.6	38.2	11.8	4879	97.4	93.3	11.9	128	2.6	71.9	9.3
2008	4671	91.5	5.1	3.5	83.6	29.4	12.6	4512	96.6	92.0	12.7	159	3.4	76.7	10.7
2009	4497	89.4	5.4	5.2	82.6	28.0	12.9	4270	95.0	90.2	13.0	227	5.0	74.4	10.9
2010	4334	91.0	5.0	4.0	88.0	26.4	13.2	4156	95.9	91.5	13.3	178	4.1	80.9	11.6
2011	4540	91.6	5.0	3.4	91.7	28.2	13.5	4389	96.7	92.0	13.6	151	3.3	81.5	11.8
2012	4386	86.5	8.6	4.9	78.0	24.8	12.6	4176	95.2	87.5	12.8	210	4.8	68.6	9.6
2013	4123	87.0	7.4	5.6	78.4	29.2	12.8	3887	94.3	87.8	12.9	236	5.7	74.2	10.8
2014	3949	88.6	7.2	4.1	81.3	31.2	13.5	3787	95.9	89.2	13.6	162	4.1	74.7	11.6
2015	4371	87.0	8.8	4.2	77.3	31.0	12.8	4176	95.5	87.7	12.9	195	4.5	72.8	10.2
2016	4308	89.3	7.2	3.5	77.0	28.1	13.5	4163	96.6	89.9	13.6	145	3.4	72.4	10.5

Tabela 3.4: Distribucija pregonitev po letih na farmi Kočevje

Leto	MLADICE					STARE SVINJE				
	Št. preg.	DPP (dni)	do 25. dne (%)	25-40 dni (%)	po 40. dnevu (%)	Št. preg.	DPP (dni)	do 25. dne (%)	25-40 dni (%)	po 40. dnevu (%)
1980	496	36.6	53.2	19.6	27.2	960	31.9	58.3	21.6	20.1
1981	217	42.2	28.1	21.2	50.7	936	31.1	49.8	30.1	20.1
1982	277	35.0	38.3	30.0	31.8	824	31.9	53.8	27.2	19.0
1983	202	30.8	50.0	28.2	21.8	729	31.5	56.2	25.8	19.1
1984	127	35.8	37.0	22.8	40.2	758	32.3	52.5	24.6	22.9
1985	108	34.7	40.7	25.9	33.3	760	30.8	56.5	21.3	22.2
1986	168	32.6	42.9	32.1	25.0	924	30.0	54.6	26.2	19.2
1987	169	37.4	26.6	34.3	39.0	801	30.1	50.3	30.2	19.6
1988	171	35.4	28.6	37.4	33.9	747	30.3	50.6	28.0	21.4
1989	199	32.9	35.2	44.2	20.6	725	28.5	56.5	29.1	14.5
1990	166	36.4	21.7	39.8	38.5	725	29.4	54.5	27.6	17.9
1991	116	31.0	44.0	38.8	17.2	586	27.9	54.2	35.6	10.2
1992	82	28.1	53.7	31.7	14.6	529	27.5	51.9	38.9	8.9
1993	100	25.6	71.0	21.0	8.0	556	26.4	58.3	35.6	6.1
1994	61	27.8	59.0	27.9	13.1	452	27.1	52.9	40.0	7.1
1995	33	26.1	60.6	30.3	9.1	354	28.5	42.5	45.1	12.4
1996	51	29.7	43.1	39.2	17.6	465	26.9	51.4	41.7	6.9
1997	62	29.0	45.2	45.2	9.7	548	27.3	59.4	29.7	11.0
1998	45	30.0	51.1	22.2	26.7	564	27.9	55.5	33.7	10.7
1999	54	28.3	59.3	29.6	11.1	548	29.2	48.1	36.1	15.9
2000	43	28.4	60.5	30.2	9.3	538	28.4	50.6	35.1	14.2
2001	43	26.5	67.4	20.9	11.6	523	29.0	53.7	30.6	15.6
2002	74	31.4	44.6	33.8	21.7	466	29.7	49.0	34.6	16.4
2003	130	27.5	60.8	28.5	10.8	549	27.4	54.8	32.4	12.8
2004	68	22.6	91.2	8.8	0.0	325	26.8	58.2	33.8	8.0
2005	32	23.0	78.1	21.9	0.0	200	30.1	42.0	37.5	20.5
2006	21	23.8	71.4	28.6	0.0	144	31.3	43.0	30.6	26.4
2007	12	32.7	33.3	41.7	25.0	119	38.2	15.9	30.3	53.8
2008	16	25.8	75.0	12.5	12.5	162	29.4	59.9	17.3	22.8
2009	23	24.0	74.0	21.7	4.3	232	28.0	65.1	15.9	19.0
2010	22	21.7	90.9	9.1	0.0	173	26.4	72.8	11.6	15.6
2011	11	21.5	90.9	9.1	0.0	155	28.2	61.9	20.0	18.1
2012	19	23.9	84.2	15.8	0.0	213	24.8	77.4	14.6	8.0
2013	34	23.8	82.4	14.7	2.9	230	29.2	59.1	17.4	23.5
2014	35	26.1	57.2	37.1	5.7	163	31.2	54.0	14.1	31.9
2015	21	26.1	66.7	19.1	14.2	185	31.0	54.6	14.1	31.3
2016	38	25.9	65.8	26.3	7.9	151	28.1	60.3	19.9	19.9

3.3 Analiza reprodukcijskega ciklusa

Tabela 3.5: Starost mladic ob pravitvi in število krmnih dni na živorojenega pujska

Leto	pri mladicah na farmi Kočevje						Izl. (%)	pred prip. (%)	po	Starost ob izl.	kDOP (dni)	KD/ $P_{\bar{z}}$
	Št. pras.	Starost ob 1.prip. pras.	do 360 dni (%)	361-420 dni (%)	≥ 421 dni (%)							
1980	875	234.7	363.9	54.4	37.0	8.6	15.0		353.2	190.9	21.9	
1981	614	225.0	352.3	68.2	30.0	1.8	18.8		326.3	181.5	22.0	
1982	668	220.2	347.7	71.7	27.0	1.3	20.0		321.0	178.2	21.7	
1983	771	228.3	348.8	75.2	23.2	1.6	16.2		316.2	171.3	21.3	
1984	736	234.6	352.6	68.2	29.4	2.5	13.4		324.1	171.8	20.7	
1985	657	224.9	342.4	79.3	19.5	1.2	13.9		319.7	161.8	20.0	
1986	713	218.3	337.7	79.5	18.9	1.5	14.0		301.3	154.2	19.9	
1987	711	213.9	334.7	82.0	16.6	1.4	12.8		306.3	150.2	19.2	
1988	684	209.8	330.3	87.3	11.8	0.9	13.6		304.4	146.8	18.4	
1989	598	214.1	334.8	80.3	18.7	1.0	20.1		297.8	159.3	19.9	
1990	622	218.9	339.8	77.7	20.3	2.1	20.0		291.3	162.6	20.5	
1991	586	223.7	343.3	78.3	21.2	0.5	15.2		300.5	161.2	19.5	
1992	629	223.2	340.8	81.4	17.8	0.8	14.9		291.7	156.8	18.6	
1993	787	222.2	339.1	80.8	17.1	2.0	13.1		306.4	155.2	18.0	
1994	653	216.8	334.6	88.5	11.5	0.0	37.6	77.4	22.6	265.3	175.6	20.2
1995	715	210.3	326.8	95.0	5.0	0.0	31.6	81.9	18.1	257.7	154.0	17.7
1996	671	211.2	328.1	94.5	5.5	0.0	29.1	74.3	25.7	265.8	155.3	17.5
1997	773	215.9	332.6	90.0	9.8	0.1	32.5	75.5	24.5	257.7	161.9	18.3
1998	766	208.0	324.2	97.7	2.3	0.0	40.0	84.5	15.5	244.8	154.9	17.5
1999	632	215.9	332.8	89.1	10.9	0.0	40.1	81.2	18.8	263.8	176.4	20.3
2000	644	218.3	334.7	87.6	12.4	0.0	35.5	83.5	16.5	269.4	173.7	20.5
2001	620	222.1	338.7	87.4	12.4	0.2	37.3	70.8	29.2	278.3	185.8	21.5
2002	613	233.7	352.0	69.5	30.2	0.3	35.5	77.3	22.7	283.8	198.8	21.7
2003	1005	236.2	354.4	70.1	29.9	0.0	37.1	69.1	30.9	275.9	199.1	21.0
2004	1460	241.6	358.0	60.2	39.8	0.0	33.0	69.2	30.8	282.8	198.9	19.2
2005	1372	243.2	359.7	56.0	44.0	0.0	34.7	69.6	30.4	284.4	204.6	19.6
2006	1193	240.6	357.4	63.6	36.4	0.0	34.3	72.5	27.5	277.1	197.6	17.4
2007	1286	235.6	352.3	78.3	21.7	0.0	36.5	81.1	18.9	271.8	193.6	16.7
2008	1147	242.1	358.8	59.9	40.1	0.0	34.7	75.7	24.3	276.0	199.1	16.1
2009	1025	241.6	359.0	57.6	42.4	0.0	32.8	80.4	19.6	274.0	195.2	15.8
2010	1268	247.9	364.9	36.0	64.0	0.0	27.7	76.5	23.5	284.2	197.1	15.4
2011	987	250.5	367.5	29.0	71.0	0.0	27.1	71.4	28.6	296.6	203.5	15.8
2012	866	249.9	366.5	33.3	66.7	0.0	31.1	75.9	24.1	291.7	207.8	15.8
2013	1123	250.5	368.1	28.9	71.1	0.0	37.5	76.2	23.8	291.7	223.1	17.0
2014	940	253.4	371.6	24.2	75.6	0.2	33.9	68.9	31.1	300.7	223.3	16.9
2015	1083	251.5	368.6	33.0	66.9	0.1	33.0	70.0	30.0	294.5	215.2	16.5
2016	1081	246.2	364.0	46.3	53.7	0.0	31.5	70.0	30.0	289.2	204.9	15.4

Tabela 3.6: Doba med prasiatvama in število krmnih dni na pujska po letih na farmi Kočevje

Leto	Št. pras.	DMP (dni)	do 160 dni (%)	161-200 dni (%)	≥201 dni (%)	Izl. (%)	DI (dni)	kDMP (dni)	G_L	$P_{\bar{z}}/$ leto	KD/ $P_{\bar{z}}$
1980	2036	153.3	76.3	18.9	4.8	12.5	118.6	170.3	2.14	21.0	17.4
1981	2598	153.8	78.4	16.8	4.8	16.9	105.0	175.2	2.10	19.7	18.5
1982	2262	153.6	77.6	17.8	4.7	18.9	93.7	175.6	2.10	19.5	18.8
1983	2556	152.1	78.3	18.3	3.4	19.6	82.6	172.3	2.10	19.6	18.6
1984	3069	150.3	81.8	14.8	3.4	16.3	90.7	167.9	2.20	20.4	17.9
1985	3093	150.4	83.1	14.0	2.9	17.0	89.0	168.6	2.20	20.7	17.7
1986	3074	149.5	81.5	15.5	3.0	15.6	82.8	164.9	2.20	21.1	17.3
1987	3192	149.4	83.0	14.7	2.3	16.5	72.6	163.8	2.20	21.7	16.9
1988	3105	150.7	81.6	15.7	2.7	18.6	80.6	169.1	2.20	21.1	17.3
1989	2919	150.4	82.5	15.8	1.7	19.5	75.2	168.6	2.20	21.1	17.3
1990	2657	153.3	81.0	16.0	3.0	20.8	84.3	175.5	2.10	20.7	17.6
1991	2600	153.0	82.0	16.3	1.7	18.5	78.3	170.8	2.10	21.9	16.7
1992	2663	152.5	81.4	17.1	1.5	19.1	73.7	169.9	2.20	22.6	16.2
1993	2510	154.4	74.9	23.7	1.4	22.4	74.9	176.0	2.10	21.4	17.1
1994	2704	152.6	79.1	20.0	0.9	20.9	70.9	172.5	2.10	22.0	16.6
1995	2964	151.0	81.1	18.5	0.4	16.7	65.7	165.1	2.20	23.1	15.8
1996	2867	150.9	80.8	18.7	0.5	21.5	69.2	170.7	2.10	21.7	16.8
1997	2679	154.1	73.9	23.9	2.2	21.5	67.3	173.5	2.10	20.8	17.5
1998	2820	153.0	76.0	22.3	1.7	19.9	63.1	169.9	2.10	21.2	17.2
1999	2925	153.0	76.0	21.9	2.1	17.4	72.6	169.7	2.20	21.8	16.7
2000	2943	152.7	75.1	23.5	1.5	20.3	69.4	170.9	2.10	21.3	17.1
2001	2807	154.7	75.6	21.4	3.1	17.4	76.4	171.6	2.10	21.4	17.1
2002	2782	153.2	79.2	18.6	2.2	18.0	79.9	171.6	2.10	21.5	17.0
2003	2592	150.1	83.1	16.5	0.4	26.0	62.7	172.2	2.10	21.1	17.3
2004	2796	150.0	85.6	14.2	0.1	27.5	67.3	175.6	2.08	22.1	16.5
2005	4042	149.0	89.6	10.3	0.1	21.7	73.1	169.3	2.16	24.2	15.1
2006	4433	149.4	91.1	8.8	0.1	18.4	58.5	162.6	2.24	27.2	13.4
2007	4694	150.1	90.8	9.1	0.1	23.8	57.7	168.1	2.17	27.5	13.3
2008	4353	154.4	76.0	23.6	0.4	22.7	60.4	172.2	2.12	29.1	12.5
2009	4005	157.4	65.0	34.5	0.5	21.7	66.7	175.9	2.08	30.0	12.2
2010	3943	157.0	67.1	32.5	0.4	22.2	62.3	174.7	2.09	30.3	12.0
2011	3901	155.4	73.2	26.2	0.6	24.1	59.3	174.2	2.10	31.0	11.8
2012	3749	157.0	67.0	32.7	0.3	24.7	67.6	179.1	2.04	29.8	12.2
2013	3561	156.6	69.1	29.8	1.1	23.4	68.0	177.3	2.06	30.2	12.1
2014	3503	156.9	68.7	30.2	1.1	27.5	64.0	181.2	2.01	30.7	11.9
2015	3724	156.9	66.3	32.7	1.0	22.9	72.1	178.3	2.05	30.1	12.1
2016	3865	156.0	68.0	31.5	0.4	20.8	69.6	174.4	2.09	31.6	11.6

Tabela 3.7: Velikost gnezda ob rojstvu, gospodarnost priraje pujskov in delež letne obnove

črede svinj na farmi Kočevje

Leto	Št. pras.	Št. izl.	$P_{\bar{z}}/$ gn.	KD/ gn.	G_L	KD/ $P_{\bar{z}}$	Št. svinj v čredi	Remont (%)	G_S
1980	2911	446	9.47	176.7	2.07	18.7	1407	31.7	6.52
1981	3212	671	9.24	176.4	2.07	19.1	1552	43.2	4.79
1982	2930	689	9.10	176.2	2.07	19.4	1414	48.7	4.25
1983	3327	773	8.96	172.1	2.12	19.2	1568	49.3	4.30
1984	3805	711	9.19	168.7	2.16	18.4	1758	40.4	5.36
1985	3750	739	9.28	167.4	2.18	18.0	1720	43.0	5.07
1986	3787	686	9.17	162.9	2.24	17.8	1690	40.6	5.52
1987	3903	736	9.38	161.3	2.26	17.2	1725	42.7	5.30
1988	3789	819	9.46	165.1	2.21	17.5	1714	47.8	4.63
1989	3517	856	9.47	167.0	2.19	17.6	1609	53.2	4.11
1990	3279	854	9.56	173.0	2.11	18.1	1554	55.0	3.84
1991	3186	694	9.89	169.0	2.16	17.1	1475	47.0	4.60
1992	3292	737	10.10	167.4	2.18	16.6	1510	48.8	4.47
1993	3297	843	9.90	171.0	2.13	17.3	1545	46.9	4.55
1994	3357	1115	10.06	173.1	2.11	17.2	1592	70.0	3.01
1995	3679	925	10.13	162.9	2.24	16.1	1642	56.3	3.98
1996	3538	1069	9.89	167.7	2.18	17.0	1630	65.6	3.32
1997	3452	1115	9.66	170.9	2.14	17.7	1617	69.0	3.10
1998	3586	1223	9.66	166.7	2.19	17.3	1638	74.7	2.93
1999	3557	1048	9.88	170.9	2.14	17.3	1666	62.9	3.40
2000	3587	1109	9.72	171.4	2.13	17.6	1684	65.8	3.24
2001	3427	963	9.80	174.1	2.10	17.8	1635	58.9	3.56
2002	3395	955	9.94	176.5	2.07	17.8	1642	58.2	3.55
2003	3597	1506	9.83	179.7	2.03	18.3	1771	85.0	2.39
2004	4256	1784	10.53	183.6	1.99	17.4	2141	83.3	2.39
2005	5414	1850	11.04	178.2	2.05	16.1	2644	70.0	2.93
2006	5626	1631	11.95	169.9	2.15	14.2	2636	61.9	3.47
2007	5980	2205	12.44	173.6	2.10	14.0	2844	77.5	2.71
2008	5500	1885	13.45	177.8	2.05	13.2	2679	70.4	2.92
2009	5030	1611	14.04	179.8	2.03	12.8	2478	65.0	3.12
2010	5211	1609	14.10	180.2	2.03	12.8	2573	62.5	3.24
2011	4888	1604	14.41	180.1	2.03	12.5	2412	66.5	3.05
2012	4615	1620	14.36	184.5	1.98	12.8	2333	69.4	2.85
2013	4684	1760	14.29	188.3	1.94	13.2	2416	72.8	2.66
2014	4443	1814	14.83	190.1	1.92	12.8	2314	78.4	2.45
2015	4807	1637	14.33	186.6	1.96	13.0	2457	66.6	2.94
2016	4946	1513	14.71	181.0	2.02	12.3	2453	61.7	3.27

Tabela 3.8: Dolžina laktacije in starostna struktura po letih na farmi Kočevje

Leto	DOLŽINA LAKTACIJE (dni)							P R A S I T V E		
	Lakt. (dni)	do 14 dni (%)	15-19 dni (%)	20-24 dni (%)	25-29 dni (%)	30-34 dni (%)	≥35 dni (%)	prva (%)	2.-7. (%)	≥8 (%)
1980	22.3	0.4	19.0	72.5	8.1			30.1	69.1	0.9
1981	23.5	0.7	12.7	61.1	25.4			19.1	60.8	20.1
1982	23.9	2.2	2.1	54.3	41.4			23.1	61.8	15.1
1983	22.9	5.0	6.8	53.5	34.7			22.4	59.5	18.1
1984	23.0	4.1	6.5	56.1	33.2			18.8	61.6	19.6
1985	23.7	3.3	4.8	52.2	39.7			17.0	67.3	15.7
1986	21.7	3.2	10.0	77.3	9.5			18.5	66.3	15.2
1987	22.7	3.3	3.5	72.9	20.3			17.6	65.7	16.7
1988	23.5	3.1	1.6	67.6	27.7			17.2	67.3	15.5
1989	25.0	4.4	1.4	40.5	53.7			17.1	69.5	13.4
1990	27.7	3.0	0.4	13.8	82.8			18.8	67.2	14.0
1991	28.0	2.2	0.3	9.5	88.0			17.8	60.4	21.8
1992	26.6	2.5	0.2	14.0	83.3			18.3	76.8	14.9
1993	28.0	4.3	1.1	16.1	78.4			21.9	63.1	15.0
1994	26.0	5.6	0.8	34.3	43.2	4.9	11.1	23.5	58.9	17.6
1995	25.6	3.8	1.2	47.7	32.8	4.3	10.2	22.7	61.4	15.9
1996	25.1	4.1	1.9	45.8	33.8	4.1	10.4	20.7	62.2	17.1
1997	26.1	4.0	0.8	35.2	41.8	6.0	12.2	25.2	57.5	17.3
1998	25.4	3.4	0.6	42.7	38.2	5.1	10.1	26.6	58.9	14.5
1999	25.6	2.8	3.4	41.6	35.1	6.4	10.8	22.9	63.2	13.9
2000	24.6	3.3	6.9	50.0	23.4	5.5	10.9	21.3	60.9	17.8
2001	27.6	3.3	0.6	24.6	49.0	8.5	14.1	22.5	58.9	18.6
2002	26.8	3.5	3.1	29.1	43.3	11.2	9.8	21.8	57.0	21.2
2003	25.0	6.3	6.8	29.8	51.5	4.0	1.6	31.3	51.8	16.9
2004	25.3	6.3	5.3	29.0	51.9	6.5	1.1	36.1	57.3	6.6
2005	24.0	3.0	11.0	40.0	41.2	4.3	0.6	28.9	68.4	2.7
2006	25.6	6.0	4.9	27.2	51.7	5.1	5.1	24.9	70.3	4.8
2007	26.6	2.4	3.1	20.7	57.3	6.1	10.4	24.8	67.2	8.0
2008	30.8	3.0	0.7	9.1	47.2	11.9	28.1	23.8	64.6	11.6
2009	32.2	1.5	0.5	8.6	39.2	14.9	35.3	23.0	70.4	6.6
2010	32.0	1.9	0.6	13.0	31.3	17.5	35.7	25.7	64.7	9.6
2011	31.2	2.2	2.8	14.1	35.7	15.0	30.2	20.9	72.4	6.8
2012	32.2	2.5	1.1	8.5	35.7	17.1	35.1	20.1	75.5	4.4
2013	31.2	3.2	1.7	10.8	39.6	13.2	31.5	27.9	62.5	9.6
2014	31.8	2.2	1.1	12.2	34.4	15.6	34.6	22.7	69.1	8.2
2015	31.5	1.9	1.1	15.1	33.7	14.8	33.4	25.1	71.5	3.4
2016	30.9	2.3	1.2	16.0	36.6	12.3	31.6	24.4	68.1	7.5

3.4 Interim obdobje in podstavitveni premor

Tabela 3.9: Interim obdobje po letih na farmi Kočevje

Leto	PRVESNICE				STARE SVINJE			
	IO (dni)	do 12 dni (%)	12-40 dni (%)	≥41 dni (%)	IO (dni)	do 12 dni (%)	12-40 dni (%)	≥41 dni (%)
1980	12.3	60.5	30.9	8.6	5.9	76.1	20.0	3.9
1981	10.8	66.1	25.9	8.1	6.1	88.0	10.1	2.0
1982	8.8	78.7	21.1	0.2	6.0	94.2	5.3	0.5
1983	13.0	75.9	17.9	6.2	6.4	93.0	6.4	2.6
1984	10.5	82.2	12.9	4.9	5.8	97.1	2.7	0.2
1985	14.7	66.5	25.7	7.8	5.9	97.0	2.6	0.4
1986	12.0	77.3	15.6	6.5	5.8	96.6	2.7	0.4
1987	9.6	81.1	17.1	1.8	5.6	97.3	2.6	0.1
1988	12.0	76.4	17.5	6.1	5.8	96.4	3.2	0.4
1989	9.8	82.8	13.7	3.5	5.8	96.2	3.7	0.1
1990	7.5	89.3	9.7	1.0	5.3	96.1	3.7	0.2
1991	8.6	86.5	10.0	3.5	5.9	93.9	4.9	1.2
1992	11.4	78.5	16.8	4.7	5.7	94.2	5.4	0.4
1993	9.8	81.5	15.3	3.2	6.3	92.0	7.3	0.7
1994	9.9	83.2	12.0	4.8	6.6	91.7	7.2	1.1
1995	11.0	77.6	17.0	5.3	6.4	90.6	8.7	0.7
1996	12.6	73.1	20.7	6.2	6.4	91.6	7.3	1.1
1997	13.8	71.3	19.7	8.9	6.4	91.8	6.9	1.2
1998	13.0	69.8	23.3	6.8	6.6	91.9	6.9	1.0
1999	16.1	60.6	30.4	9.1	6.7	92.0	7.1	1.1
2000	16.6	63.1	24.8	12.1	7.0	91.1	7.8	1.2
2001	15.3	68.2	20.8	11.3	6.7	91.7	6.7	1.5
2002	10.7	81.3	12.6	6.1	6.3	93.1	6.1	0.8
2003	6.6	94.6	3.5	1.9	5.7	96.7	2.2	0.9
2004	7.5	89.1	9.1	1.8	6.4	92.7	5.4	1.9
2005	10.3	75.2	23.6	1.2	6.7	92.8	7.0	0.2
2006	10.5	72.9	25.8	1.3	6.2	94.5	5.2	0.3
2007	9.3	80.8	18.1	1.1	5.8	96.1	3.8	0.1
2008	7.8	88.3	10.0	1.7	6.8	90.2	9.8	0.0
2009	6.9	89.9	9.9	0.2	8.0	82.3	17.6	0.1
2010	7.1	89.6	9.6	0.8	8.0	82.6	17.2	0.2
2011	7.4	89.3	9.5	1.2	6.7	90.6	9.1	0.3
2012	7.2	89.1	10.4	0.5	7.7	83.8	16.2	0.0
2013	8.0	86.2	11.9	1.9	7.5	85.7	14.1	0.2
2014	7.5	88.8	10.3	1.0	7.5	87.2	12.5	0.3
2015	8.1	88.0	10.4	1.6	7.4	87.0	12.9	0.1
2016	9.5	85.7	13.8	0.5	7.5	85.5	14.4	0.1

Tabela 3.10: Poodstavitveni premor po letih na farmi Kočevje

Leto	PRVESNICE					STARE SVINJE				
	Št. svinj	PP (dni)	do 12 dni (%)	13-60 dni (%)	≥61 dni (%)	Št. svinj	PP (dni)	do 12 dni (%)	13-60 dni (%)	≥61 dni (%)
1980	547	25.3	47.9	42.1	10.1	1489	12.9	79.8	16.8	3.5
1981	432	25.2	54.9	33.2	11.9	2166	12.5	78.9	17.4	3.8
1982	798	26.0	50.4	35.8	13.8	2768	15.0	74.1	20.2	5.7
1983	868	25.0	55.6	33.1	11.3	2861	14.4	74.4	20.7	4.9
1984	962	22.5	57.8	32.3	9.9	3205	11.9	81.5	15.6	2.9
1985	650	24.9	50.7	38.4	10.9	3553	12.5	80.0	16.6	3.4
1986	932	24.1	53.6	35.4	10.7	3446	12.3	78.5	18.4	2.6
1987	847	22.3	54.7	36.9	8.4	3436	11.2	82.0	15.4	2.6
1988	830	22.2	57.2	34.6	8.2	3345	11.3	80.9	17.1	2.0
1989	817	21.0	59.5	33.2	7.3	3169	10.9	81.1	17.5	1.4
1990	857	18.6	64.3	29.1	6.6	2920	10.9	80.2	17.7	2.1
1991	640	19.2	62.9	30.3	6.8	2830	10.6	80.3	18.1	1.6
1992	700	17.7	62.1	35.4	2.5	2714	10.0	81.1	18.6	0.3
1993	724	14.9	67.0	31.6	1.4	2732	11.2	76.9	22.6	0.6
1994	708	14.5	69.3	29.7	1.0	2690	10.4	80.1	19.5	0.4
1995	755	15.2	65.7	33.6	0.7	2819	9.1	82.1	17.7	0.1
1996	561	16.4	62.7	35.8	1.4	2961	9.6	80.2	19.7	0.1
1997	809	19.8	57.0	37.4	5.6	2681	11.3	77.7	21.1	1.3
1998	785	18.5	56.6	40.0	3.4	2809	11.3	78.3	20.5	1.2
1999	680	22.3	48.1	45.7	5.9	3074	11.5	79.1	19.1	1.9
2000	693	22.2	50.8	44.0	5.1	3018	11.6	78.0	20.9	1.2
2001	624	21.2	55.0	37.7	7.3	2913	11.3	79.1	19.0	1.7
2002	604	17.4	65.2	29.6	5.2	2897	10.6	81.0	17.4	1.6
2003	1001	12.5	73.6	25.4	1.0	2563	9.1	84.4	15.0	0.7
2004	1211	10.7	78.1	21.4	0.5	2436	8.7	84.8	13.4	1.8
2005	1602	12.2	70.1	29.8	0.1	3197	7.7	90.0	10.0	0.0
2006	830	11.2	70.9	29.1	0.0	4285	7.1	91.7	8.3	0.0
2007	1242	10.9	77.4	22.6	0.0	3765	6.5	94.1	5.9	0.0
2008	991	8.9	85.2	14.4	0.4	3680	7.7	87.0	12.9	0.1
2009	1057	8.3	85.4	14.6	0.0	3440	9.4	77.7	22.3	0.0
2010	1063	8.3	85.9	14.5	0.0	3271	9.0	78.8	20.9	0.3
2011	1221	8.3	86.4	13.4	0.2	3319	7.6	87.5	12.4	0.1
2012	714	8.7	84.3	15.6	0.1	3672	8.9	79.7	20.2	0.1
2013	998	10.4	79.0	20.7	0.3	3125	8.9	81.1	18.8	0.1
2014	1049	9.3	83.9	16.0	0.1	2900	8.5	83.6	16.4	0.0
2015	852	9.3	84.6	15.3	0.1	3519	8.9	82.6	17.4	0.0
2016	1045	8.9	82.7	17.2	0.1	3263	8.3	82.4	17.6	0.0

3.5 Analiza izločitev

Tabela 3.11: Izločitve svinj po letih na farmi Kočevje

Leto	MLADICE							STARE SVINJE					
	Št. izl.	DOI (dni)	Izločitve		Vzrok izločitve			Št. izl.	DI (dni)	Izločitve		Vzrok izločitve	
			pred	po pr.	8	9	10			pred	po pr.	9	10
1980	154	153.2			0.7	57.8	7.8	292	118.6	19.2	80.8	20.8	50.4
1981	142	126.3				63.4	12.0	529	105.0	35.0	65.0	28.4	22.1
1982	176	115.1			0.6	54.6	19.9	674	80.4	50.6	49.4	20.2	16.8
1983	178	124.6			2.3	70.2	9.6	588	86.8	46.9	53.1	26.9	12.9
1984	102	125.5				69.6	10.8	593	89.9	44.2	55.8	29.5	10.3
1985	100	123.1				75.0	11.0	648	89.3	41.8	58.2	25.6	13.4
1986	128	96.7				83.6	10.2	615	78.6	50.6	49.4	28.1	12.4
1987	102	114.0				69.6	16.7	630	74.5	55.2	44.8	20.3	12.7
1988	100	105.0				63.0	24.0	698	81.6	50.1	49.9	23.6	15.3
1989	156	96.5				44.9	35.9	696	78.1	47.1	52.9	17.4	17.7
1990	160	92.5				72.5	18.1	673	83.6	43.2	56.8	24.1	19.6
1991	103	99.6				50.5	33.0	643	73.7	60.0	40.0	17.3	14.3
1992	123	86.3			0.7	57.7	22.8	643	77.2	53.5	46.5	16.3	18.4
1993	452	72.2			49.3	14.6	7.1	716	73.6	60.3	39.7	15.8	11.9
1994	394	65.7	77.9	22.1	65.5	10.9	8.9	655	75.6	64.9	35.1	12.4	13.3
1995	244	60.9	82.0	18.0	76.2	8.6	6.1	619	71.2	66.1	33.9	6.8	15.2
1996	372	64.2	73.1	26.9	63.4	8.6	13.2	801	72.5	64.9	35.1	7.9	16.4
1997	379	52.6	75.5	24.5	59.9	10.3	9.2	730	69.2	71.2	28.8	10.5	7.9
1998	543	47.5	86.0	14.0	79.6	5.3	6.1	634	71.9	67.2	32.8	11.7	11.5
1999	392	70.5	79.6	20.4	73.2	11.2	6.9	607	81.9	59.3	40.7	16.0	12.7
2000	347	73.0	78.1	21.9	72.0	18.4	3.2	785	69.6	70.8	29.2	12.7	8.3
2001	388	80.8	73.7	26.3	64.9	18.6	8.2	540	86.6	57.2	42.8	20.6	12.6
2002	312	81.7	75.6	24.4	63.5	17.0	5.1	726	71.8	63.2	36.8	16.0	12.1
2003	687	77.7	69.6	30.4	56.8	22.9	5.7	979	64.2	58.2	41.8	19.8	12.6
2004	876	83.1	68.3	31.7	59.6	24.8	2.6	1038	71.9	64.3	35.7	10.7	5.7
2005	484	85.2	71.7	28.3	57.6	18.4	1.2	1132	69.1	68.7	31.3	13.8	3.7
2006	825	71.7	77.9	22.1	61.5	15.3	1.3	1101	60.2	73.5	26.5	9.8	3.2
2007	608	77.2	76.3	23.7	58.1	14.3	0.5	1371	57.3	84.4	15.6	6.2	1.5
2008	613	75.6	79.0	21.0	56.6	11.1	2.0	1279	62.3	81.9	18.1	5.7	2.2
2009	450	74.6	76.7	23.3	55.6	14.9	1.8	1131	66.4	77.5	22.5	7.1	3.8
2010	491	84.8	77.8	22.2	52.5	12.4	1.2	1224	59.0	83.3	16.7	6.8	1.7
2011	268	107.7	63.8	36.2	41.8	15.3	0.7	1244	64.1	78.9	21.1	7.4	1.8
2012	522	89.0	77.4	22.6	54.2	14.4	0.8	1091	71.3	65.8	34.2	12.2	4.3
2013	683	91.0	76.4	23.6	50.5	15.1	1.3	1121	66.1	74.8	25.2	9.4	3.9
2014	466	104.2	68.7	31.3	42.7	11.6	1.5	1355	66.6	75.1	24.9	8.7	1.9
2015	515	91.4	66.4	33.6	46.2	17.3	1.6	1117	72.5	65.5	34.5	13.9	3.7
2016	528	89.6	71.2	28.8	50.0	14.8	1.7	1056	68.7	70.3	29.7	9.7	3.2

Poglavje 4

Farma Ljutomer

4.1 Velikost gnezda

Tabela 4.1: Velikost gnezda po letih na farmi Ljutomer

Leto	MLADICE			STARE SVINJE						SKUPAJ		
	Št. pras.	DOP (dni)	$P_{\bar{z}}$ /gn.	Št. pras.	DMP (dni)	Lakt. (dni)	IO (dni)	PP (dni)	$P_{\bar{z}}$ /gn.	Št. pras.	P_{O} /gn.	Izgube (%)
1982	181	179.5	8.63	521	167.3	28.3	18.1	23.4	10.07	702	8.22	15.2
1983	209	181.0	9.27	510	161.4	28.1	16.8	17.6	9.92	719	8.20	15.7
1984	187	177.4	9.20	577	161.3	27.9	16.6	18.9	10.39	764	8.86	12.3
1985	159	175.9	9.25	577	158.1	27.9	15.0	15.7	10.30	736	8.69	13.7
1986	184	163.3	9.29	547	160.0	27.0	15.7	18.6	10.64	731	8.88	13.8
1987	151	179.3	8.54	599	158.9	26.4	12.8	18.0	10.60	750	8.73	14.3
1988	237	153.0	8.84	516	157.6	26.6	11.1	16.5	10.50	753	8.50	14.8
1989	191	148.7	8.92	783	153.5	26.5	8.3	13.0	10.26	974	8.67	13.3
1990	187	154.7	9.21	733	154.9	25.8	8.0	14.9	10.39	920	8.77	13.6
1991	224	155.3	9.02	722	153.6	26.5	7.2	12.6	10.49	946	8.91	12.1
1992	218	154.2	9.36	723	150.7	26.5	6.9	10.0	10.08	941	8.75	11.7
1993	211	166.4	9.32	833	154.6	26.9	7.2	13.2	10.42	1044	8.25	9.3
1994	188	149.8	9.62	844	151.8	27.1	6.8	10.1	10.60	1032	9.16	10.6
1995	221	161.3	8.83	866	153.7	27.4	7.0	11.6	10.25	1087	9.03	9.5
1996	257	150.6	8.83	928	153.1	27.4	7.2	11.2	10.07	1185	8.70	11.3
1997	180	148.5	8.02	993	155.3	27.5	6.9	12.9	9.94	1173	8.42	12.7
1998	203	148.7	8.31	972	154.6	27.2	6.7	12.4	9.98	1175	8.58	11.4
1999	242	156.5	8.54	938	156.6	27.2	7.8	14.3	10.19	1180	9.09	7.8
2000	206	147.6	8.58	1041	155.3	27.3	7.3	12.9	10.52	1247	9.01	11.7
2001	258	150.5	9.00	1003	153.3	27.2	6.2	11.2	10.22	1261	8.80	11.8
2002	492	141.6	8.39	1232	158.8	27.5	5.8	15.7	10.00	1724	8.49	11.0
2003	375	145.7	8.83	1573	156.4	27.1	7.1	14.3	10.27	1948	8.69	13.0
2004	465	139.4	7.86	1711	154.6	25.8	6.8	13.8	10.18	2176	8.30	14.3
2005	336	131.5	8.27	1768	155.8	26.4	7.0	14.3	10.50	2104	8.78	13.5
2006	411	141.4	8.04	1754	152.4	26.3	6.9	11.4	10.71	2165	8.88	13.0
2007	401	150.8	8.51	1821	153.6	25.4	7.7	13.5	10.38	2222	8.67	13.6
2008	338	158.5	8.67	1600	154.7	27.0	8.8	13.1	10.56	1938	8.83	13.7
2009	257	191.7	9.84	1168	158.9	22.5	16.5	21.6	10.75	1425	8.77	17.2
2010	284	197.5	9.46	1312	159.1	24.8	15.4	19.4	11.58	1596	9.55	14.7
2011	258	191.6	9.41	1113	156.4	25.3	11.4	16.1	11.35	1371	9.23	16.0
2012	197	205.1	9.88	842	167.1	25.6	19.1	25.7	11.44	1039	9.84	11.7
2013	272	191.3	12.83	951	152.8	25.7	8.0	11.1	12.04	1223	10.82	11.4
2014	201	200.2	12.30	1098	158.0	24.7	9.5	16.6	12.76	1299	11.28	11.1
2015	197	185.1	11.50	957	159.4	25.0	8.3	17.3	12.69	1154	10.77	13.7
2016	251	188.7	12.38	1003	157.1	24.5	7.9	15.7	12.27	1254	10.55	14.1

4.2 Analiza pripustov

Tabela 4.2: Analiza pripustov mladic po letih na farmi Ljutomer

Leto	S K U P A J							PRVI PRIPUST				DRUGI IN VIŠJI			
	Št. pr.	Usp. pr. (%)	Izl. po pr. (%)	Preg. (%)	DPI (dni)	DPP (dni)	P _Z /pr.	Št. pr.	Prvi (%)	Usp. (%)	P _Z /pr.	Št. pr.	≥2 (%)	Usp. (%)	P _Z /pr.
1982	173	92.5	0.0	7.5	0.0	55.2	7.9	158	91.3	92.4	7.8	15	8.7	93.3	8.9
1983	215	98.6	1.4		128.0		9.2	215	100.0	98.6	9.2				
1984	185	95.1	1.1	3.2	43.5	46.3	8.8	175	94.6	94.9	8.7	10	5.4	100.0	10.2
1985	190	87.9	11.6	0.5	96.8	79.0	8.1	188	99.0	87.8	8.1	2	1.0	100.0	11.0
1986	224	77.7	13.8	8.5	78.7	48.6	7.2	195	87.0	78.0	7.2	29	13.0	75.9	7.5
1987	243	64.6	18.1	16.9	59.4	49.0	5.6	185	76.1	66.0	5.7	58	23.9	60.3	5.2
1988	355	66.8	18.9	13.5	62.8	39.2	5.9	295	83.1	69.2	6.1	60	16.9	55.0	4.8
1989	232	82.8	7.8	9.1	61.9	33.8	7.4	202	87.1	85.2	7.5	30	12.9	66.7	6.7
1990	236	80.5	4.7	14.0	67.7	35.5	7.4	203	86.0	80.8	7.4	33	14.0	78.8	7.7
1991	265	84.2	3.8	10.6	67.2	23.1	7.6	224	84.5	88.4	7.9	41	15.5	61.0	5.8
1992	278	78.1	5.8	15.8	74.1	33.3	7.3	243	87.4	80.2	7.4	35	12.6	62.9	6.6
1993	326	61.3	12.6	26.1	48.1	27.4	5.7	233	71.5	64.4	6.1	93	28.5	53.8	5.0
1994	243	81.1	3.7	14.4	66.0	26.3	7.0	208	85.6	82.2	7.0	35	14.4	74.3	6.8
1995	278	79.9	5.8	13.7	41.7	26.2	7.1	238	85.6	81.9	7.2	40	14.4	67.5	6.4
1996	331	77.6	4.8	17.5	35.9	23.9	6.9	277	83.7	79.4	6.8	54	16.3	68.5	7.1
1997	248	72.6	10.9	16.5	49.4	30.7	5.8	208	83.9	73.1	5.9	40	16.1	70.0	5.7
1998	297	69.0	11.1	19.9	55.1	30.0	5.7	235	79.1	71.9	5.8	62	20.9	58.1	5.5
1999	373	64.6	10.5	24.7	42.4	31.3	5.5	281	75.3	66.9	5.6	92	24.7	57.6	5.3
2000	318	64.8	15.1	19.5	40.8	30.5	5.6	254	79.9	64.6	5.4	64	20.1	65.6	6.2
2001	443	56.4	19.2	23.7	43.9	30.7	5.1	343	77.4	58.6	5.1	100	22.6	49.0	5.1
2002	1038	48.2	31.2	20.1	41.6	29.8	4.0	830	80.0	49.0	4.0	208	20.0	44.7	4.3
2003	678	55.9	29.2	14.2	42.3	27.4	5.0	562	82.9	57.7	5.0	116	17.1	47.4	4.7
2004	1079	42.5	38.6	17.4	40.7	27.5	3.3	890	82.5	43.7	3.4	189	17.5	37.0	3.3
2005	741	45.2	33.6	18.9	37.2	28.9	3.7	608	82.1	46.1	3.7	133	17.9	41.4	3.9
2006	726	56.1	26.3	15.7	44.6	29.3	4.5	600	82.6	58.3	4.6	126	17.4	45.2	4.2
2007	677	59.8	21.4	17.4	50.1	29.9	5.1	549	81.1	61.4	5.1	128	18.9	53.1	5.0
2008	451	75.2	14.4	9.3	54.7	28.6	6.5	408	90.5	75.7	6.5	43	9.5	69.8	6.5
2009	391	63.9	7.9	13.3	65.3	39.4	6.3	341	87.2	64.2	6.3	50	12.8	62.0	6.3
2010	390	74.4	8.5	10.3	60.9	33.4	7.0	344	88.2	75.6	7.1	46	11.8	65.2	6.3
2011	428	59.1	11.4	14.0	49.7	34.5	5.6	371	86.7	62.5	5.9	57	13.3	36.8	3.5
2012	331	61.3	10.6	16.3	46.1	36.8	6.1	273	82.5	62.3	6.2	58	17.5	56.9	5.7
2013	379	72.0	4.8	21.6	44.9	47.1	9.2	308	81.3	73.4	9.5	71	18.7	66.2	8.1
2014	293	67.9	5.8	23.9	48.3	48.0	8.3	204	69.6	71.6	8.8	89	30.4	59.6	7.1
2015	310	64.2	7.4	25.5	44.7	58.1	7.4	245	79.0	62.9	7.1	65	21.0	69.2	8.5
2016	368	67.9	6.0	21.5	65.3	42.3	8.4	276	75.0	68.1	8.5	92	25.0	67.4	8.0

Tabela 4.3: Analiza pripustov starih svinj po letih na farmi Ljutomer

Leto	S K U P A J							PRVI PRIPUST				DRUGI IN VIŠJI			
	Št. prip.	Usp. prip. (%)	Izl. po prip. (%)	Preg. (%)	DPI (dni)	DPP (dni)	$P_{\bar{z}}$ / prip.	Št. prip.	Prvi (%)	Usp. (%)	$P_{\bar{z}}$ / prip.	Št. prip.	≥ 2 (%)	Usp. (%)	$P_{\bar{z}}$ / prip.
1982	594	85.9	9.3	4.9	120.9	49.9	8.6	550	92.6	85.8	8.6	44	7.4	86.4	8.6
1983	616	82.9	18.3	0.3	105.8	50.4	8.3	611	99.2	83.1	8.3	5	0.8	60.0	6.4
1984	732	78.0	19.0	3.4	108.7	41.0	8.1	694	94.8	79.2	8.2	38	5.2	55.3	6.1
1985	733	79.1	17.0	3.8	96.1	45.9	8.1	701	95.6	81.5	8.4	32	4.4	31.3	3.1
1986	670	80.4	14.9	4.5	84.2	50.5	8.6	607	90.6	83.7	8.9	63	9.4	49.2	5.2
1987	814	73.5	15.7	10.7	73.8	40.2	7.8	713	87.6	74.5	7.9	101	12.4	66.3	7.1
1988	744	70.0	17.1	12.6	65.7	38.7	7.4	615	82.7	74.5	7.9	129	17.3	48.8	4.7
1989	1001	77.4	9.4	12.2	53.6	37.6	7.9	853	85.2	81.7	8.4	148	14.8	52.7	5.5
1990	1045	69.4	13.8	16.1	62.8	33.3	7.2	811	77.6	74.6	7.8	234	22.4	51.3	5.2
1991	1019	71.2	10.1	17.6	55.6	29.2	7.4	795	78.0	78.4	8.3	224	22.0	45.5	4.5
1992	970	74.8	11.6	12.7	72.6	28.6	7.6	825	85.1	79.4	8.1	145	14.9	49.0	4.8
1993	1170	71.5	9.0	19.1	64.7	30.5	7.4	932	79.7	77.4	8.1	238	20.3	48.7	5.0
1994	1146	73.6	9.7	16.3	76.0	30.1	7.8	962	83.9	78.5	8.4	184	16.1	47.8	5.0
1995	1135	75.2	8.3	15.7	67.6	28.5	7.8	937	82.6	79.2	8.2	198	17.4	56.6	5.8
1996	1355	68.2	9.5	21.5	54.7	27.8	6.8	1092	80.6	75.3	7.5	263	19.4	38.8	3.8
1997	1395	71.3	7.8	20.3	56.1	29.4	7.1	1094	78.4	77.5	7.7	301	21.6	48.8	4.9
1998	1389	70.5	8.3	21.0	60.6	34.9	7.0	1112	80.1	76.3	7.7	277	19.9	46.9	4.5
1999	1347	69.3	6.2	22.0	41.1	28.8	7.1	1021	75.8	77.9	8.0	326	24.2	42.3	4.0
2000	1439	72.3	7.1	19.2	51.2	30.8	7.6	1154	80.2	78.2	8.3	285	19.8	48.4	4.9
2001	1415	71.2	7.8	20.1	66.4	34.5	7.3	1156	81.7	75.6	7.8	259	18.3	51.4	5.0
2002	2069	59.5	8.4	30.4	45.7	31.8	5.9	1435	69.4	65.5	6.5	634	30.6	46.1	4.7
2003	2290	68.1	7.5	23.0	46.2	30.3	7.0	1736	75.8	73.6	7.5	554	24.2	51.1	5.4
2004	2706	62.9	8.4	27.7	42.3	30.0	6.4	2003	74.0	69.9	7.1	703	26.0	42.7	4.3
2005	2690	66.1	9.6	22.7	43.1	30.9	6.9	2014	74.9	72.9	7.7	676	25.1	45.9	4.8
2006	2400	73.0	8.3	17.7	45.8	31.6	7.8	1980	82.5	78.4	8.4	420	17.5	47.1	4.9
2007	2554	71.7	8.8	18.8	51.0	31.8	7.4	2040	79.9	77.1	8.0	514	20.1	50.0	5.1
2008	2059	78.2	6.8	13.3	55.4	29.6	8.3	1761	85.5	80.6	8.5	298	14.5	64.1	6.9
2009	1740	66.8	5.0	13.1	55.2	37.0	7.2	1507	86.6	68.0	7.3	233	13.4	58.8	6.6
2010	1685	77.8	5.3	12.6	58.9	34.8	9.0	1490	88.4	80.0	9.3	195	11.6	61.0	6.7
2011	1640	68.0	7.7	14.5	69.3	35.3	7.7	1401	85.4	70.8	8.1	239	14.6	51.9	5.7
2012	1185	72.5	7.3	12.3	44.2	44.2	8.3	1015	85.7	73.4	8.4	170	14.3	67.1	7.6
2013	1139	83.5	4.7	11.3	52.1	41.7	10.1	1032	90.6	85.2	10.3	107	9.4	67.3	7.6
2014	1330	78.1	4.7	16.0	48.0	49.3	10.0	1130	85.0	80.4	10.2	200	15.0	65.0	9.0
2015	1419	71.6	7.1	19.3	53.4	47.4	9.1	1161	81.8	74.6	9.5	258	18.2	58.1	7.3
2016	1380	70.7	6.6	18.8	49.9	39.9	8.7	1116	80.9	74.4	9.2	264	19.1	55.3	6.7

Tabela 4.4: Distribucija pregonitev po letih na farmi Ljutomer

Leto	MLADICE					STARE SVINJE				
	Št. preg.	DPP (dni)	do 25. dne (%)	25-40 dni (%)	po 40. dnevu (%)	Št. preg.	DPP (dni)	do 25. dne (%)	25-40 dni (%)	po 40. dnevu (%)
1982	13	55.2	23.1	7.7	69.2	29	49.9	34.5	20.7	44.8
1983	0					2	50.4	61.5	7.7	30.8
1984	6	46.3	16.7	16.7	66.7	25	41.0	46.4	10.7	42.9
1985	1	79.0	0.0	0.0	100.0	28	45.9	28.6	17.9	53.6
1986	19	48.6	31.6	15.8	52.6	30	50.5	20.0	13.3	66.7
1987	41	49.0	26.8	26.8	46.3	87	40.2	40.2	16.1	43.7
1988	48	39.2	43.7	25.0	31.2	94	38.7	39.4	14.9	45.8
1989	21	33.8	42.9	23.8	33.3	122	37.6	41.8	18.0	40.2
1990	33	35.5	54.5	15.1	30.3	168	33.3	43.5	25.0	31.5
1991	28	23.1	89.3	0.0	10.7	179	29.2	55.3	21.8	22.9
1992	44	33.3	65.9	4.6	29.5	123	28.6	71.5	14.6	13.8
1993	85	27.4	57.7	29.4	12.9	223	30.5	52.5	24.2	23.3
1994	35	26.3	77.1	2.9	20.0	187	30.1	62.6	15.5	21.9
1995	38	26.2	78.9	13.2	7.9	178	28.5	65.7	15.7	18.5
1996	58	23.9	82.8	8.6	8.6	291	27.8	68.5	17.1	14.4
1997	41	30.7	65.9	9.8	24.4	283	29.4	55.8	23.3	20.9
1998	59	30.0	54.2	20.3	25.4	292	34.9	44.9	22.3	32.9
1999	92	31.3	56.5	14.1	29.3	296	28.8	56.1	28.7	15.2
2000	62	30.5	54.8	21.0	24.2	276	30.8	50.2	26.0	23.8
2001	105	30.7	57.1	22.9	20.0	284	34.5	46.8	23.2	30.0
2002	209	29.8	54.1	24.9	21.0	629	31.8	46.0	31.4	22.6
2003	96	27.4	61.5	29.2	9.4	527	30.3	45.4	36.4	18.2
2004	188	27.5	49.5	46.3	4.2	749	30.0	46.7	39.1	14.1
2005	140	28.9	42.2	55.0	2.8	611	30.9	43.4	39.4	17.2
2006	114	29.3	35.0	63.2	1.8	424	31.6	40.0	39.9	20.1
2007	118	29.9	41.5	47.5	11.0	479	31.8	45.7	33.0	21.3
2008	42	28.6	40.5	50.0	9.5	273	29.6	49.1	35.5	15.4
2009	52	39.4	27.0	34.6	38.4	228	37.0	38.6	26.3	35.1
2010	40	33.4	52.5	20.0	27.5	212	34.8	49.6	25.9	24.5
2011	60	34.5	31.6	41.7	26.7	238	35.3	44.5	32.4	23.1
2012	54	36.8	31.4	27.8	40.8	146	44.2	29.5	30.1	40.4
2013	82	47.1	41.5	9.8	48.7	129	41.7	45.0	14.7	40.3
2014	70	48.0	30.0	14.3	55.7	213	49.3	38.5	8.9	52.6
2015	79	58.1	24.1	2.5	73.4	274	47.4	37.6	9.1	53.3
2016	79	42.3	40.5	10.1	49.4	260	39.9	36.5	26.2	37.3

4.3 Analiza reprodukcijskega ciklusa

Tabela 4.5: Starost mladic ob pravitvi in število krmnih dni na živorojenega pujska

Leto	pri mladicah na farmi Ljutomer						Izl. (%)	pred prip. (%)	po	Starost ob izl.	kDOP (dni)	KD/ $P_{\bar{z}}$
	Št. pras.	Starost ob 1.prip. pras.	do 360 dni (%)	361-420 dni (%)	≥ 421 dni (%)							
1982	158	255.3	385.5	41.1	43.7	15.2					185.5	21.8
1983	212	267.0	383.0	39.6	48.1	12.3	1.4			353.0	188.0	20.2
1984	180	259.5	376.2	47.8	36.1	16.1	1.1				180.9	19.7
1985	168	259.5	374.9	45.2	44.1	10.7	11.6			385.9	199.3	21.6
1986	176	244.6	363.8	58.0	33.5	8.5	16.2			353.8	193.5	20.8
1987	155	253.5	377.7	37.4	49.0	13.6	20.9			350.7	217.6	25.5
1988	240	233.5	353.1	69.2	26.6	4.2	22.1			328.4	189.5	21.7
1989	189	230.1	348.1	78.3	20.1	1.6	7.8			312.1	157.6	17.8
1990	192	235.9	353.9	72.4	25.0	2.6	6.8			354.4	165.1	18.1
1991	226	237.4	354.7	68.1	29.2	2.7	2.6			344.0	158.5	17.6
1992	217	235.7	353.4	64.1	35.0	0.9	8.4			318.5	164.4	17.6
1993	199	243.5	366.6	43.2	53.8	3.0	15.0			309.9	186.0	19.7
1994	185	231.3	350.2	70.8	29.2	0.0	9.3	52.6	47.4	297.6	161.0	18.7
1995	223	242.4	361.2	57.0	41.3	1.8	14.4	60.5	39.5	272.2	175.4	19.9
1996	252	231.0	350.6	71.4	27.4	1.2	11.3	50.0	50.0	269.5	159.4	17.8
1997	185	229.2	349.4	71.9	27.0	1.1	17.3	28.2	71.8	292.9	169.0	21.1
1998	205	225.1	346.6	74.1	22.9	2.0	23.2	53.2	46.8	279.0	170.5	20.6
1999	224	235.0	358.8	57.6	40.6	1.8	36.4	69.8	30.2	271.6	200.7	23.6
2000	225	224.2	346.7	77.3	21.8	0.9	36.7	62.6	37.4	255.9	179.8	21.0
2001	228	229.6	353.1	62.7	33.8	3.5	36.1	46.9	53.1	273.8	196.0	21.9
2002	486	219.9	342.4	82.9	16.5	0.6	46.4	28.3	71.7	259.0	194.2	23.0
2003	372	225.5	346.1	75.5	22.6	1.9	44.9	39.0	61.0	255.2	192.0	21.6
2004	479	218.5	337.7	86.2	13.8	0.0	53.6	22.3	77.7	260.4	210.3	26.9
2005	318	214.4	334.1	89.3	10.4	0.3	45.7	0.0	0.0	258.0	189.4	23.1
2006	413	220.6	339.8	87.9	12.1	0.0	31.8	0.0	0.0	275.3	179.1	22.1
2007	435	228.7	349.8	74.9	23.4	1.6	25.4	0.0	0.0	284.7	181.7	21.4
2008	346	239.3	357.7	65.0	32.7	2.3	16.7	0.0	100.0	298.0	182.0	21.2
2009	289	275.2	395.8	12.5	67.8	19.7	10.9	14.0	86.0	358.6	255.1	26.1
2010	261	274.5	393.5	10.7	74.7	14.6	9.3	0.0	100.0	350.6	231.4	24.2
2011	252	273.4	392.4	7.1	76.6	16.3	14.4	0.0	100.0	349.6	264.1	28.1
2012	222	285.2	407.2	17.1	45.5	37.4	12.5	18.9	81.1	346.1	259.9	26.1
2013	253	260.7	387.4	25.3	60.1	14.6	12.3	48.6	51.4	319.3	208.5	15.8
2014	182	267.4	396.9	13.2	65.9	20.9	7.5	40.0	60.0	311.2	210.0	17.3
2015	199	254.7	388.1	28.6	50.8	20.6	13.0	12.5	87.5	334.3	217.8	18.9
2016	238	254.7	382.9	31.1	55.0	13.9	7.3	10.0	90.0	336.4	204.5	16.7

Tabela 4.6: Doba med prasiatvama in število krmnih dni na pujska po letih na farmi Ljutomer

Leto	Št. pras.	DMP (dni)	do 160 dni (%)	161-200 dni (%)	≥201 dni (%)	Izl. (%)	DI (dni)	kDMP (dni)	G_L	$P_{\bar{z}}$ / leto	KD/ $P_{\bar{z}}$
1982	469	162.9	74.4	16.6	9.2	19.0	180.2	205.6	1.80	17.9	20.3
1983	488	158.2	80.9	13.7	5.3	24.5	133.2	201.3	1.80	18.1	20.2
1984	544	159.3	76.3	18.0	5.7	25.9	140.6	208.4	1.80	18.0	20.3
1985	578	155.4	84.1	12.1	3.8	21.8	136.9	193.6	1.90	19.7	18.5
1986	500	159.7	79.8	12.4	7.8	19.7	125.8	190.7	1.90	20.3	18.0
1987	602	157.3	78.4	16.9	4.7	25.2	109.2	194.1	1.90	19.7	18.5
1988	500	156.8	80.2	15.0	4.8	26.4	106.0	194.7	1.90	20.0	18.2
1989	757	152.7	85.9	9.9	4.2	16.4	86.1	169.5	2.20	21.8	16.7
1990	730	152.8	81.2	15.1	3.7	20.9	101.7	179.7	2.00	20.7	17.6
1991	736	152.2	83.4	13.2	3.4	21.5	86.0	175.9	2.10	21.7	16.8
1992	740	150.1	88.2	9.9	1.9	22.2	86.4	174.7	2.10	21.2	17.2
1993	786	154.0	81.8	14.8	3.4	15.3	95.8	171.3	2.10	22.3	16.4
1994	870	151.8	87.0	10.6	2.4	17.8	102.7	175.0	2.10	22.3	16.4
1995	845	153.7	83.2	13.8	3.0	18.6	72.1	171.2	2.10	22.0	16.6
1996	940	153.9	83.4	13.1	3.5	19.9	78.5	174.8	2.10	20.9	17.4
1997	1000	154.5	83.1	13.2	3.7	15.8	79.9	170.6	2.10	21.3	17.2
1998	964	154.8	82.4	13.1	4.6	17.7	80.4	172.8	2.10	21.1	17.3
1999	911	155.4	81.7	14.1	4.3	19.0	55.1	170.4	2.10	21.7	16.8
2000	1054	155.4	80.7	15.8	3.4	14.3	74.8	168.8	2.20	22.8	16.0
2001	1038	153.8	83.3	13.6	3.1	18.4	78.3	172.4	2.10	21.7	16.9
2002	1200	159.2	74.6	18.6	6.8	17.3	85.0	178.5	2.00	20.4	17.9
2003	1548	155.8	78.3	17.7	4.0	17.5	75.0	173.4	2.10	21.7	16.8
2004	1679	155.6	79.4	15.4	5.2	17.5	81.4	174.4	2.09	21.2	17.3
2005	1769	155.0	80.4	15.4	4.2	18.3	78.9	175.0	2.09	21.9	16.7
2006	1749	152.4	84.6	12.9	2.5	17.5	67.2	168.4	2.17	23.3	15.7
2007	1812	153.8	81.6	14.0	4.5	18.1	74.1	171.9	2.12	22.1	16.5
2008	1638	153.6	80.2	17.1	2.7	22.2	56.2	172.3	2.12	22.3	16.3
2009	1187	159.4	70.9	23.1	6.0	20.2	61.1	207.6	1.76	18.8	19.4
2010	1296	158.8	71.8	22.8	5.5	19.1	68.9	185.0	1.97	22.6	16.1
2011	1152	156.4	78.4	16.9	4.7	22.0	79.8	198.6	1.84	21.1	17.3
2012	822	166.3	63.1	24.9	12.0	31.3	44.1	209.2	1.74	19.7	18.5
2013	988	153.9	83.2	13.4	3.4	17.9	50.5	165.9	2.20	26.5	13.8
2014	1067	158.2	76.7	15.4	8.0	13.8	66.7	171.0	2.13	27.1	13.4
2015	972	158.5	75.3	15.1	9.6	18.5	68.3	178.8	2.04	25.9	14.1
2016	1007	157.7	76.4	16.1	7.5	17.1	65.1	179.8	2.03	25.1	14.6

Tabela 4.7: Velikost gnezda ob rojstvu, gospodarnost priraje pujskov in delež letne obnove

črede svinj na farmi Ljutomer

Leto	Št. pras.	Št. izl.	$P_{\bar{z}}/$ gn.	KD/ gn.	G_L	KD/ $P_{\bar{z}}$	Št. svinj v čredi	Remont (%)	G_S
1982	627	110	9.71	200.5	1.82	20.6	344	31.9	5.70
1983	700	161	9.77	197.3	1.85	20.2	378	42.6	4.35
1984	724	192	9.98	201.6	1.81	20.2	400	48.0	3.77
1985	746	183	10.19	194.8	1.87	19.1	398	46.0	4.08
1986	676	157	10.26	191.4	1.91	18.7	354	44.3	4.31
1987	757	244	10.09	198.9	1.84	19.7	412	59.2	3.10
1988	740	247	10.04	193.0	1.89	19.2	391	63.1	3.00
1989	946	164	9.86	167.2	2.18	17.0	433	37.9	5.77
1990	922	207	9.98	176.6	2.07	17.7	446	46.4	4.46
1991	962	208	10.14	171.8	2.12	16.9	453	45.9	4.63
1992	957	231	9.95	172.4	2.12	17.3	452	51.1	4.14
1993	985	177	10.25	174.2	2.10	17.0	470	37.7	5.56
1994	1055	209	10.31	172.5	2.12	16.7	499	41.9	5.05
1995	1068	233	9.99	172.1	2.12	17.2	504	46.3	4.58
1996	1192	268	9.79	171.5	2.13	17.5	560	47.9	4.44
1997	1185	228	9.64	170.3	2.14	17.7	553	41.2	5.20
1998	1169	271	9.67	172.4	2.12	17.8	552	49.1	4.31
1999	1135	347	9.82	176.4	2.07	18.0	548	63.3	3.27
2000	1279	308	10.21	170.8	2.14	16.7	598	51.5	4.15
2001	1266	366	10.00	176.6	2.07	17.7	613	59.7	3.46
2002	1686	679	9.54	183.0	1.99	19.2	845	80.4	2.48
2003	1920	637	10.05	177.0	2.06	17.6	931	68.4	3.01
2004	2158	921	9.60	182.4	2.00	19.0	1078	85.4	2.34
2005	2087	682	10.14	177.2	2.06	17.5	1013	67.3	3.06
2006	2162	575	10.23	170.5	2.14	16.7	1010	56.9	3.76
2007	2247	555	10.03	173.8	2.10	17.3	1070	51.9	4.05
2008	1984	545	10.21	174.0	2.10	17.0	946	57.6	3.64
2009	1476	410	10.52	216.9	1.68	20.6	877	46.7	3.60
2010	1557	355	11.16	192.8	1.89	17.3	822	43.2	4.39
2011	1404	414	11.11	210.4	1.73	18.9	809	51.2	3.39
2012	1044	465	11.03	220.0	1.66	19.9	629	73.9	2.24
2013	1241	255	12.28	174.6	2.09	14.2	594	43.0	4.87
2014	1249	188	12.64	176.7	2.07	14.0	605	31.1	6.64
2015	1171	259	12.48	185.4	1.97	14.9	595	43.5	4.52
2016	1245	240	12.33	184.5	1.98	15.0	629	38.1	5.19

Tabela 4.8: Dolžina laktacije in starostna struktura po letih na farmi Ljutomer

Leto	DOLŽINA LAKTACIJE (dni)							P R A S I T V E		
	Lakt. (dni)	do 14 dni (%)	15-19 dni (%)	20-24 dni (%)	25-29 dni (%)	30-34 dni (%)	≥35 dni (%)	prva (%)	2.-7. (%)	≥8 (%)
1982	27.9	0.0	0.7	9.2	90.1			22.6	61.2	16.2
1983	28.0	2.0	0.5	0.8	97.7			25.0	62.0	13.0
1984	27.9	2.5	0.4	0.3	96.8			19.9	69.1	11.0
1985	27.7	1.7	0.3	0.4	97.6			20.5	70.6	8.9
1986	26.7	2.2	0.5	0.6	96.6			25.2	67.7	7.1
1987	26.1	2.7	1.0	5.8	90.5			19.6	71.8	8.6
1988	26.4	1.8	0.3	1.0	96.9			31.2	61.8	7.0
1989	26.2	3.7	0.6	12.8	82.9			18.5	71.8	9.7
1990	25.4	3.0	1.0	28.9	67.1			18.2	70.4	11.4
1991	25.9	4.4	0.2	13.2	82.2			19.8	62.7	17.5
1992	25.7	4.8	0.3	16.4	78.5			19.9	52.0	28.1
1993	26.6	2.9	0.1	9.5	87.5			20.1	68.4	11.5
1994	26.4	2.6	0.2	4.0	87.1	5.7	0.3	16.2	66.8	16.9
1995	26.6	3.2	0.2	2.3	86.6	7.3	0.5	20.2	59.2	20.6
1996	27.4	3.5	0.3	0.5	85.5	10.0	0.2	19.3	60.7	20.0
1997	27.5	3.6	0.3	1.5	84.6	9.9	0.2	15.8	64.9	19.3
1998	27.2	3.9	0.0	0.2	84.1	11.6	0.3	18.4	65.1	16.4
1999	27.2	5.8	0.0	0.5	78.7	14.2	0.7	23.6	55.5	21.0
2000	27.3	3.6	0.3	0.3	83.1	12.4	0.3	22.3	59.5	18.2
2001	13.8	3.5	0.5	1.4	83.6	10.7	0.3	21.9	57.3	20.8
2002	27.6	3.1	0.2	3.5	73.0	17.8	2.3	38.3	49.8	11.9
2003	27.0	4.4	0.0	1.3	80.8	13.5	0.0	26.3	60.2	13.5
2004	26.1	5.4	1.5	9.0	73.4	10.6	0.0	33.7	54.9	11.4
2005	26.2	6.0	1.3	11.7	69.3	11.8	0.0	21.7	60.9	17.4
2006	26.4	5.9	1.8	10.4	72.0	9.7	0.2	22.5	57.9	19.6
2007	25.6	6.3	1.1	19.2	66.5	6.9	0.0	21.0	54.9	24.1
2008	26.6	4.9	0.8	11.9	71.6	10.8	0.0	16.6	56.6	26.8
2009	22.7	19.1	0.6	0.9	66.7	11.9	0.8	17.8	59.1	23.1
2010	24.8	14.7	0.2	0.2	72.6	12.4	0.0	15.9	61.5	22.6
2011	25.4	13.4	0.1	0.3	74.3	11.4	0.5	18.0	58.1	23.9
2012	25.0	19.3	0.5	1.7	61.4	11.6	5.5	17.8	57.2	25.0
2013	26.2	2.5	4.6	21.4	56.8	7.4	7.3	19.8	62.1	18.1
2014	24.9	3.0	1.9	31.3	61.4	2.4	0.0	13.8	71.6	14.6
2015	25.0	5.0	0.8	38.7	49.8	1.5	4.1	16.7	64.1	19.2
2016	24.6	5.1	2.9	38.7	48.3	2.4	2.6	17.6	56.4	26.0

4.4 Interim obdobje in podstavitveni premor

Tabela 4.9: Interim obdobje po letih na farmi Ljutomer

Leto	PRVESNICE				STARE SVINJE			
	IO (dni)	do 12 dni (%)	12-40 dni (%)	≥41 dni (%)	IO (dni)	do 12 dni (%)	12-40 dni (%)	≥41 dni (%)
1982								
1983	27.4	50.8	30.3	81.1	16.4	79.3	12.4	8.3
1984	29.8	48.2	28.0	23.8	14.7	81.4	10.4	8.2
1985	29.0	54.5	25.5	20.0	14.2	82.6	10.6	6.8
1986	21.3	66.8	20.7	12.5	15.7	79.9	11.9	8.2
1987	19.6	61.7	27.0	11.3	11.4	85.6	10.8	3.6
1988	15.1	71.6	20.3	8.1	11.3	88.9	7.7	3.4
1989	12.3	79.4	15.5	5.1	7.7	91.7	7.1	1.2
1990	14.6	78.6	17.7	3.7	7.3	91.1	7.8	1.1
1991	10.8	75.6	22.1	2.3	7.0	93.3	5.9	0.8
1992	11.1	75.7	19.3	5.0	6.9	92.7	6.5	0.8
1993	10.8	77.5	17.7	4.8	7.5	90.9	8.5	0.7
1994	9.7	81.6	15.2	3.2	7.2	90.5	8.0	1.5
1995	12.1	78.2	17.0	4.8	7.5	89.6	8.3	2.0
1996	9.7	81.0	16.2	2.8	7.9	86.7	11.3	2.0
1997	10.2	78.1	18.7	3.2	6.9	91.0	8.2	0.8
1998	11.1	71.9	25.7	2.7	6.8	91.9	7.6	0.5
1999	13.6	68.9	24.0	7.3	7.2	89.0	10.2	0.9
2000	12.1	72.9	21.5	5.4	6.6	92.0	7.5	0.6
2001	7.9	85.9	13.7	0.5	6.3	93.9	5.2	0.9
2002	6.7	92.1	7.1	0.8	5.5	98.4	1.2	0.4
2003	9.2	83.9	12.5	3.5	7.1	90.5	8.5	1.0
2004	9.8	81.5	14.0	4.5	6.7	91.8	7.3	0.9
2005	10.6	81.8	11.7	6.5	6.7	91.4	7.9	0.7
2006	9.6	80.8	15.1	4.1	6.9	91.3	7.6	1.1
2007	11.9	74.6	19.5	5.9	7.7	89.0	8.8	2.2
2008	13.7	73.3	17.1	9.6	8.4	86.0	11.9	2.1
2009	19.2	67.8	15.7	16.5	16.0	67.3	22.3	10.4
2010	26.0	48.9	25.8	25.3	13.9	73.0	17.5	9.5
2011	18.9	59.2	24.4	16.4	11.0	78.5	16.0	5.5
2012	27.8	47.9	26.8	25.3	17.0	71.4	17.1	11.5
2013	10.6	77.8	20.4	1.8	7.8	90.3	9.0	0.7
2014	11.0	76.3	21.8	1.9	9.8	84.5	13.3	2.2
2015	14.2	66.4	25.4	8.2	8.4	87.0	11.9	1.1
2016	12.3	76.5	13.6	9.9	7.6	90.4	8.1	1.6

Tabela 4.10: Poodstavitveni premor po letih na farmi Ljutomer

Leto	PRVESNICE					STARE SVINJE				
	Št. svinj	PP (dni)	do 12 dni (%)	13-60 dni (%)	≥61 dni (%)	Št. svinj	PP (dni)	do 12 dni (%)	13-60 dni (%)	≥61 dni (%)
1982										
1983	132	32.2	48.5	27.3	24.2	450	21.4	74.4	17.2	8.4
1984	201	31.8	46.8	27.5	25.7	534	18.4	77.3	16.0	6.7
1985	145	29.9	53.8	35.3	10.9	588	17.5	79.8	13.4	6.8
1986	135	27.0	62.3	27.3	10.4	535	21.1	72.2	17.8	10.0
1987	201	24.8	53.2	37.3	9.5	613	17.1	75.1	18.5	6.4
1988	222	26.5	54.1	33.1	12.8	522	18.4	76.1	17.2	6.7
1989	268	23.1	66.1	19.6	14.3	733	13.1	81.2	14.6	4.2
1990	210	32.1	51.9	31.1	17.0	835	16.4	74.5	19.4	6.1
1991	258	25.1	52.3	35.8	11.9	761	14.5	77.2	18.4	4.4
1992	247	18.3	59.9	34.9	5.2	723	10.8	83.7	14.1	2.2
1993	271	21.7	62.0	28.4	9.6	899	15.7	74.9	19.3	5.8
1994	217	43.1	67.3	28.1	4.6	929	13.0	78.1	18.0	3.9
1995	188	49.8	61.7	29.3	9.0	947	13.4	77.2	18.6	4.2
1996	379	17.4	64.9	29.5	5.6	976	14.6	73.9	20.9	5.2
1997	256	22.1	57.4	33.2	9.4	1139	15.1	74.3	20.2	5.6
1998	266	22.3	55.3	34.5	10.4	1123	14.6	76.3	18.5	5.6
1999	264	29.0	50.8	32.9	16.5	1083	16.7	70.5	22.7	6.9
2000	287	20.2	59.6	32.3	7.8	1152	14.5	74.6	20.9	4.3
2001	205	15.2	70.3	25.1	5.0	1210	13.4	77.2	18.2	4.5
2002	705	21.9	57.7	33.2	9.1	1364	17.3	71.6	21.0	7.4
2003	554	25.5	53.2	33.3	13.6	1736	15.4	72.8	22.0	5.2
2004	569	22.6	57.8	30.7	11.5	2137	16.0	70.6	24.5	4.9
2005	540	25.0	55.6	32.3	12.1	2150	16.5	70.7	23.0	6.3
2006	396	17.4	66.7	26.8	6.5	2004	14.0	76.9	18.3	4.8
2007	461	20.9	59.7	30.0	10.3	2093	15.9	73.0	20.7	6.3
2008	344	20.6	63.1	27.4	9.5	1715	13.6	74.5	22.2	3.3
2009	282	27.4	54.6	32.1	13.3	1458	21.3	59.4	32.7	7.9
2010	354	34.0	42.7	37.3	20.0	1331	18.1	66.3	27.2	6.5
2011	279	28.0	48.4	37.9	13.7	1361	16.9	69.4	24.7	5.9
2012	232	38.1	41.0	33.3	25.7	953	23.8	62.9	24.1	13.0
2013	284	15.2	69.4	26.4	4.2	855	11.4	83.4	13.8	2.8
2014	262	25.5	58.8	23.3	17.9	1068	16.5	75.0	17.8	7.2
2015	244	32.5	49.2	29.9	20.9	1175	18.7	74.6	15.3	10.1
2016	302	25.6	59.6	25.2	15.2	1078	16.7	74.9	17.2	7.9

4.5 Analiza izločitev

Tabela 4.11: Izločitve svinj po letih na farmi Ljutomer

Leto	MLADICE						STARE SVINJE						
	Št. izl.	DOI (dni)	Izločitve		Vzrok izločitve			Št. izl.	DI (dni)	Izločitve		Vzrok izločitve	
			pred	po pr.	8	9	10			pred	po pr.	9	10
1982	0							134	175.2	54.5	45.5	62.0	18.0
1983	8	374.1				25.0	50.0	192	128.2	41.2	58.8	43.7	5.2
1984	0							172	152.3	25.0	75.0	57.6	8.1
1985	31	181.5				90.3		175	137.1	22.9	77.1	61.7	11.4
1986	43	153.1				67.4	25.6	176	118.6	27.8	72.2	43.2	16.5
1987	71	124.0			25.4	43.7	16.9	215	104.8	37.7	62.3	31.6	18.6
1988	72	131.6			16.7	37.5	29.2	160	109.6	27.5	72.5	31.9	28.7
1989	15	120.5				73.3	20.0	166	88.3	34.3	65.7	25.3	29.5
1990	18	132.9			5.6	16.7	38.9	198	100.8	32.8	67.2	25.3	27.3
1991	10	119.5			50.0		30.0	197	80.9	51.3	48.7	11.7	29.9
1992	35	110.7			2.9	80.0	5.7	214	90.7	40.2	59.8	42.5	9.3
1993	40	106.3			40.0	37.5	20.0	131	94.5	35.1	64.9	31.3	18.3
1994	29	82.2	62.1	37.9	51.7	24.1	3.4	182	106.1	37.9	62.1	35.7	11.0
1995	34	74.8	66.7	33.3	47.1	44.1	5.9	212	74.4	54.2	45.8	26.4	11.8
1996	30	68.4	50.0	50.0	40.0	46.7	10.0	227	87.8	32.6	67.4	25.1	24.2
1997	44	89.2	34.1	65.9	34.1	59.1		189	79.7	48.1	51.9	25.9	12.2
1998	107	72.4	70.1	29.9	67.3	24.3	2.8	226	79.2	49.1	50.9	23.5	18.6
1999	129	70.5	57.4	42.6	57.4	27.9	9.3	194	76.1	51.5	48.5	9.8	26.3
2000	113	56.6	61.9	38.1	60.2	34.5	0.9	186	75.2	47.8	52.2	22.0	16.1
2001	268	61.9	32.5	67.5	26.5	51.9	7.5	224	84.4	44.6	55.4	20.1	15.6
2002	356	61.3	27.2	72.8	21.6	51.1	7.9	249	89.8	31.3	68.7	22.9	27.3
2003	353	54.5	38.5	61.5	21.8	52.1	3.4	327	82.0	46.5	53.5	11.0	23.2
2004	535	60.0	17.4	82.6	4.9	48.6	5.6	399	84.1	31.8	68.2	3.3	26.8
2005	223	69.5	0.9	99.1	0.4	37.7	9.9	400	85.1	35.8	64.2	18.0	22.5
2006	185	79.7	0.0	100.0		49.7	8.6	350	78.8	39.4	60.6	10.6	23.4
2007	128	92.6	0.0	100.0		57.0	9.4	419	75.4	51.1	48.9	17.2	12.9
2008	56	112.2	0.0	100.0		51.8	1.8	456	62.6	67.3	32.7	9.6	4.8
2009	47	176.4	12.8	87.2	19.1	21.3	6.4	336	94.9	58.0	42.0	4.2	4.8
2010	50	184.8	0.0	100.0	8.0	24.0	8.0	290	94.0	58.6	41.4	10.3	5.9
2011	85	177.2	0.0	100.0	15.3	31.8	15.3	331	105.7	51.7	48.3	6.0	3.3
2012	49	178.5	20.4	79.6	16.3	36.7	8.2	399	74.4	63.4	36.6	6.0	4.5
2013	42	116.5	47.6	52.4	35.7	4.8	9.5	211	53.2	72.0	28.0	6.6	5.2
2014	18	152.9	11.1	88.9	0.0	11.1	5.6	205	62.7	62.0	38.0	2.0	9.8
2015	34	140.4	14.7	85.3	5.9	14.7	20.6	219	83.2	51.6	48.4	12.3	11.4
2016	27	173.2	3.7	96.3	7.4	7.4	11.1	194	75.1	53.1	46.9	3.1	10.8

Poglavje 5

Farma Krško

5.1 Velikost gnezda

Tabela 5.1: Velikost gnezda po letih na farmi Krško

Leto	MLADICE			STARE SVINJE						SKUPAJ		
	Št. pras.	DOP (dni)	$P_z/$ gn.	Št. pras.	DMP (dni)	Lakt. (dni)	IO (dni)	PP (dni)	$P_z/$ gn.	Št. pras.	$P_o/$ gn.	Izgube (%)
1985	745	171.4	9.18	250	155.8	25.6	12.1	15.4	10.04	995	8.72	7.2
1986	1202	159.5	8.71	1699	157.0	23.9	13.3	18.5	10.18	2901	8.27	13.5
1987	444	150.3	8.87	2549	156.2	24.8	11.1	16.8	10.23	2993	8.57	14.6
1988	1062	144.8	8.46	1743	157.5	25.9	9.2	16.5	10.05	2805	8.36	11.6
1989	885	152.2	8.59	2312	159.7	27.5	11.8	16.8	9.96	3197	8.38	12.5
1990	616	135.8	8.37	2948	154.0	27.2	9.4	11.5	9.93	3564	8.38	13.3
1991	673	135.5	8.03	2885	153.6	27.7	8.4	10.4	9.81	3558	8.27	12.7
1992	542	126.2	8.10	2952	153.8	27.1	8.7	10.7	9.59	3494	8.24	11.9
1993	724	124.2	8.24	2764	155.5	28.9	9.0	10.8	9.52	3488	8.01	13.5
1994	569	133.8	8.77	2694	156.9	30.3	8.8	10.7	10.11	3263	8.35	15.3
1995	753	137.2	8.66	2878	154.9	28.8	8.6	10.3	10.23	3631	8.45	14.7
1996	521	136.6	8.62	2733	155.0	28.9	8.9	10.7	10.45	3254	8.76	13.8
1997	568	133.4	8.49	2564	158.2	32.5	8.7	10.7	10.46	3132	8.62	14.7
1998	630	129.6	8.43	2732	156.0	31.1	8.4	10.0	10.21	3362	8.53	13.6
1999	558	132.8	8.41	2697	156.9	30.8	9.0	11.2	10.18	3255	8.27	16.3
2000	622	133.9	8.45	2657	155.9	29.4	9.5	11.6	10.03	3279	8.21	15.6
2001	482	138.2	8.84	2570	153.0	28.1	8.5	9.9	9.97	3052	7.89	18.8
2002	658	145.6	8.84	2453	151.6	25.4	8.5	10.1	10.01	3111	8.90	8.9
2003	816	159.3	10.06	2503	145.8	19.9	8.6	10.4	9.95	3319	9.18	8.0
2004	929	166.1	10.51	2189	146.8	22.3	7.8	9.1	10.44	3118	9.56	8.7
2005	642	166.3	11.00	2323	147.1	24.0	6.5	7.1	10.97	2965	9.36	14.8
2006	533	151.9	11.62	2282	150.1	27.8	6.0	6.1	11.91	2815	9.73	17.9
2007	555	156.9	11.95	1702	150.5	27.5	6.1	6.3	12.50	2257	10.08	18.5
2008	567	162.4	11.93	1483	150.6	27.9	5.9	6.0	13.01	2050	10.46	17.7
2009	728	162.6	12.20	1356	152.1	29.5	6.1	6.1	13.83	2084	11.24	15.2
2010	759	167.7	12.87	1981	150.7	29.3	5.0	5.0	13.94	2740	11.63	14.8
2011	651	173.6	13.01	2217	151.2	29.3	5.4	5.4	14.01	2868	11.21	18.7
2012	299	160.5	13.22	1809	151.7	30.1	5.2	5.2	14.45	2108	12.05	15.6
2013	488	160.5	13.38	1571	153.3	30.8	5.8	5.8	14.33	2059	11.93	15.4
2014	863	165.7	13.46	1657	154.1	31.2	5.5	5.5	14.77	2520	12.44	13.2
2015	607	165.3	13.13	1963	156.8	34.0	5.2	5.2	15.30	2570	12.29	16.9
2016	658	165.7	13.16	2156	157.9	34.7	5.8	5.8	14.79	2814	12.01	16.7

5.2 Analiza pripustov

Tabela 5.2: Analiza pripustov mladic po letih na farmi Krško

Leto	S K U P A J							PRVI PRIPUST				DRUGI IN VIŠJI			
	Št. pr.	Usp. pr. (%)	Izl. po pr. (%)	Preg. (%)	DPI (dni)	DPP (dni)	P _Z /pr.	Št. pr.	Prvi (%)	Usp. (%)	P _Z /pr.	Št. pr.	≥2 (%)	Usp. (%)	P _Z /pr.
1985	1072	68.9	17.6	13.4	78.4	32.3	6.3	931	86.8	72.3	6.7	141	13.1	47.5	4.2
1986	1680	71.1	13.0	15.2	76.8	34.5	6.2	1445	86.0	72.7	6.3	235	14.0	61.3	5.4
1987	619	71.2	17.3	10.7	83.4	28.5	6.3	544	87.9	72.1	6.4	75	12.1	65.3	5.9
1988	1945	54.2	22.9	22.6	90.7	32.0	4.6	1539	79.1	55.8	4.7	406	20.9	48.3	4.2
1989	1233	73.4	16.3	10.3	64.2	29.2	6.3	1075	87.2	75.4	6.5	158	12.8	59.5	5.2
1990	730	83.8	10.1	5.9	54.4	23.3	7.0	690	94.5	85.7	7.2	40	5.5	52.5	4.2
1991	773	86.9	10.7	2.1	45.3	23.1	7.0	756	97.8	87.3	7.0	17	2.2	70.6	4.8
1992	607	88.6	9.2	2.0	61.8	22.1	7.2	596	98.2	88.9	7.2	11	1.8	72.7	6.6
1993	850	85.8	12.9	0.9	51.5	24.6	7.1	841	98.9	86.0	7.1	9	1.1	66.7	5.3
1994	668	85.9	13.6		47.9		7.5	668	100.0	85.9	7.5	0			
1995	866	86.4	13.2		51.2		7.5	866	100.0	86.4	7.5	0			
1996	591	88.2	11.7		54.7		7.6	591	100.0	88.2	7.6	0			
1997	660	86.5	13.2		51.6		7.3	660	100.0	86.5	7.3	0			
1998	745	84.7	10.6	3.9	57.8	27.5	7.1	719	96.5	85.3	7.2	26	3.5	69.2	6.7
1999	654	85.6	10.2	3.8	65.4	30.7	7.2	624	95.4	86.9	7.3	30	4.6	60.0	5.4
2000	695	87.9	11.8		65.9		7.5	695	100.0	87.9	7.5	0			
2001	596	84.3	14.1	1.7	58.0	38.5	7.0	586	98.3	84.5	7.1	10	1.7	60.0	5.1
2002	813	80.4	17.0	2.2	61.0	24.8	7.1	799	98.3	80.4	7.1	14	1.7	85.7	8.3
2003	1046	78.0	17.1	4.9	68.5	22.3	7.8	997	95.3	78.5	7.8	49	4.7	67.3	6.7
2004	1135	82.4	14.2	3.4	54.5	22.2	8.7	1090	96.0	82.7	8.7	45	4.0	75.6	8.2
2005	758	88.4	10.2	1.5	57.5	22.1	9.6	748	98.7	88.8	9.7	10	1.3	60.0	7.1
2006	589	91.7	6.1	2.2	65.6	22.3	10.7	577	98.0	91.7	10.6	12	2.0	91.7	11.5
2007	619	90.0	8.6	1.5	69.7	20.1	10.8	608	98.2	90.6	10.9	11	1.8	54.5	6.1
2008	623	90.9	7.9	1.3	56.2	20.8	10.8	615	98.7	91.1	10.8	8	1.3	75.0	9.1
2009	776	92.1	7.9		59.3		11.2	776	100.0	92.1	11.2	0			
2010	883	87.3	12.6	0.1	69.5	100.0	11.3	882	99.9	87.4	11.3	1	0.1		
2011	722	90.7	9.3		68.0		11.8	722	100.0	90.7	11.8	0			
2012	344	86.0	14.0		61.7		11.4	344	100.0	86.0	11.4	0			
2013	548	88.7	11.3		69.8		11.9	548	100.0	88.7	11.9	0			
2014	979	88.5	11.5		62.0		11.9	979	100.0	88.5	11.9	0			
2015	739	81.6	18.4		59.9		10.7	739	100.0	81.6	10.7	0			
2016	773	84.7	15.3		69.5		11.2	773	100.0	84.7	11.2	0			

Tabela 5.3: Analiza pripustov starih svinj po letih na farmi Krško

Leto	S K U P A J							PRVI PRIPUST				DRUGI IN VIŠJI			
	Št. prip.	Usp. prip. (%)	Izl. po prip. (%)	Preg. (%)	DPI (dni)	DPP (dni)	$P_{\bar{z}}$ / prip.	Št. prip.	Prvi (%)	Usp. (%)	$P_{\bar{z}}$ / prip.	Št. prip.	≥ 2 (%)	Usp. (%)	$P_{\bar{z}}$ / prip.
1985	322	71.7	8.7	19.6	78.0	35.4	7.1	288	89.4	71.2	7.0	34	10.5	76.5	8.2
1986	2350	71.5	9.4	18.8	70.8	35.4	7.3	1992	84.8	72.9	7.4	358	15.2	64.0	6.7
1987	3732	68.5	14.0	17.1	65.7	30.1	7.0	3033	81.3	71.4	7.3	699	18.7	56.2	5.8
1988	2944	59.1	20.3	20.3	86.6	36.9	5.9	2336	79.3	62.4	6.3	608	20.6	46.5	4.7
1989	3281	69.5	13.9	16.1	63.2	30.6	6.9	2744	83.6	70.8	7.0	537	16.4	62.8	6.3
1990	3568	83.1	8.1	8.4	51.6	26.8	8.3	3261	91.4	84.1	8.3	307	8.6	73.0	7.5
1991	3540	81.3	8.4	9.8	45.5	25.5	8.0	3195	90.3	83.1	8.1	345	9.8	64.6	6.3
1992	3594	82.5	7.5	9.5	54.6	25.9	7.9	3247	90.3	83.8	8.0	347	9.6	69.4	6.8
1993	3302	83.7	8.0	8.2	52.1	25.1	8.0	3031	91.8	84.7	8.1	271	8.2	72.0	6.9
1994	3291	82.0	8.6	9.2	51.5	24.7	8.3	2990	90.9	82.9	8.3	301	9.1	72.1	7.4
1995	3387	84.6	6.8	8.2	60.2	25.6	8.7	3111	91.9	85.5	8.8	276	8.1	74.6	7.6
1996	3180	86.4	6.0	7.2	59.3	26.3	9.0	2942	92.5	86.9	9.1	238	7.5	80.3	8.3
1997	3005	84.2	7.1	8.6	58.9	26.9	8.8	2744	91.3	85.0	8.9	261	8.7	76.2	7.7
1998	3247	84.5	7.0	8.3	56.4	25.7	8.6	2998	92.3	85.7	8.7	249	7.7	71.1	7.4
1999	3256	83.3	7.0	9.2	57.5	26.9	8.5	2946	90.5	84.2	8.6	310	9.5	73.9	7.6
2000	3133	85.1	6.5	7.9	60.1	26.2	8.5	2875	91.8	85.4	8.5	258	8.2	81.4	8.6
2001	2980	86.4	7.2	5.8	63.3	25.8	8.6	2798	93.9	87.1	8.7	182	6.1	76.4	7.9
2002	2857	85.4	7.4	7.0	60.5	25.9	8.6	2658	93.0	86.2	8.6	199	7.0	74.4	7.5
2003	3035	82.2	9.8	7.9	63.0	25.7	8.2	2799	92.2	83.2	8.3	236	7.8	71.2	7.1
2004	2652	83.4	10.6	5.9	59.5	23.5	8.7	2484	93.7	83.8	8.7	168	6.3	77.4	8.8
2005	2652	88.9	8.4	2.6	55.2	23.0	9.7	2571	96.9	89.0	9.7	81	3.1	86.4	9.3
2006	2575	92.7	6.6	0.7	58.7	21.1	11.0	2555	99.2	92.9	11.1	20	0.8	75.0	9.1
2007	1909	89.6	9.6	0.8	75.7	22.1	11.2	1895	99.3	89.8	11.2	14	0.7	64.3	5.6
2008	1635	90.9	8.6	0.6	66.0	21.9	11.8	1625	99.4	91.0	11.8	10	0.6	70.0	8.4
2009	1460	92.6	7.1	0.3	66.4	21.0	12.8	1456	99.7	92.7	12.8	4	0.3	50.0	5.2
2010	2138	91.8	8.1	0.1	65.9	22.5	12.8	2136	99.9	91.9	12.8	2	0.1		
2011	2429	92.2	7.8		69.9		12.9	2429	100.0	92.2	12.9	0			
2012	1991	90.5	9.5		69.2		13.1	1990	99.9	90.6	13.1	1	0.1		
2013	1759	89.6	10.1	0.3	60.7	21.8	12.9	1754	99.7	89.6	12.9	5	0.3	80.0	12.8
2014	1893	88.1	11.8	0.1	72.7	21.0	13.0	1892	100.0	88.1	13.0	1	0.1	100.0	19.0
2015	2238	88.0	12.0		69.6		13.5	2238	100.0	88.0	13.5	0			
2016	2396	88.8	11.2		79.7		13.1	2396	100.0	88.8	13.1	0			

Tabela 5.4: Distribucija pregonitev po letih na farmi Krško

Leto	MLADICE					STARE SVINJE				
	Št. preg.	DPP (dni)	do 25. dne (%)	25-40 dni (%)	po 40. dnevu (%)	Št. preg.	DPP (dni)	do 25. dne (%)	25-40 dni (%)	po 40. dnevu (%)
1985	144	32.3	53.5	20.8	25.7	63	35.4	36.5	33.3	30.2
1986	255	34.5	40.6	28.5	30.9	442	35.4	38.5	29.2	32.4
1987	66	28.5	57.6	25.8	16.7	638	30.1	53.2	25.1	21.7
1988	440	32.0	56.4	15.9	27.7	598	36.9	40.6	21.1	38.3
1989	127	29.2	63.0	17.3	19.7	528	30.6	49.6	23.4	27.0
1990	43	23.3	83.7	14.0	2.3	300	26.8	58.7	30.9	10.4
1991	16	23.1	87.5	6.2	6.3	347	25.5	63.8	30.2	6.0
1992	12	22.1	83.3	16.7	0.0	341	25.9	62.7	32.4	5.0
1993	8	24.6	62.5	37.5	0.0	271	25.1	67.0	29.6	3.3
1994	0					303	24.7	69.5	27.8	2.6
1995	0					278	25.6	62.2	33.1	4.7
1996	0					229	26.3	59.4	33.2	7.4
1997	0					258	26.9	56.6	34.9	8.5
1998	29	27.5	62.1	20.7	17.2	270	25.7	61.7	33.5	4.8
1999	25	30.7	56.0	28.0	16.0	300	26.9	58.2	31.4	10.4
2000	0					248	26.2	62.2	27.7	10.0
2001	10	38.5	50.0	20.0	30.0	173	25.8	61.8	32.4	5.8
2002	18	24.8	61.1	33.3	5.6	200	25.9	65.3	26.6	8.0
2003	51	22.3	82.4	15.7	2.0	240	25.7	65.0	31.7	3.3
2004	39	22.2	92.3	7.7	0.0	157	23.5	78.3	21.0	0.6
2005	11	22.1	90.9	9.1	0.0	70	23.0	80.0	18.6	1.4
2006	13	22.3	84.6	15.4	0.0	18	21.1	100.0	0.0	0.0
2007	9	20.1	100.0	0.0	0.0	15	22.1	93.3	6.7	0.0
2008	8	20.8	100.0	0.0	0.0	9	21.9	100.0	0.0	0.0
2009	0					4	21.0	100.0	0.0	0.0
2010	1	23.0	100.0	0.0	0.0	2	22.5	100.0	0.0	0.0
2011	0					0				
2012	0					0				
2013	0					5	21.8	100.0	0.0	0.0
2014	0					1	21.0	100.0	0.0	0.0
2015	0					0				
2016	0					0				

5.3 Analiza reprodukcijskega ciklusa

Tabela 5.5: Starost mladic ob pravitvi in število krmnih dni na živorojenega pujska

Leto	pri mladica na farmi Krško						Izl. (%)	pred prip. (%)	po	Starost ob izl.	kDOP (dni)	KD/ $P_{\bar{z}}$
	Št. pras.	Starost ob 1.prip. pras.	do 360 dni (%)	361-420 dni (%)	≥ 421 dni (%)							
1985	740	253.0	371.5	47.3	45.0	7.7	20.3			348.4	209.4	22.8
1986	1204	239.3	358.9	61.6	35.2	3.2	15.4			339.4	184.2	21.4
1987	439	233.3	351.0	69.0	28.0	3.0	19.3			331.8	182.5	20.8
1988	1062	222.7	344.7	73.8	24.2	2.0	30.2			334.0	202.7	24.1
1989	894	233.1	351.7	64.5	35.0	0.4	16.8			317.6	175.4	20.4
1990	613	219.6	335.8	92.3	7.5	0.2	10.9			284.2	146.1	17.5
1991	673	219.8	335.3	90.8	9.2	0.0	10.9			271.3	144.0	17.9
1992	539	210.5	326.2	95.6	4.4	0.0	9.4			278.5	134.3	16.6
1993	731	208.5	324.0	97.5	2.3	0.1	13.1			262.6	133.4	16.2
1994	614	215.8	331.3	95.8	4.2	0.0	41.3	77.2	22.8	249.5	166.9	19.4
1995	742	221.8	337.6	87.1	12.9	0.0	35.2	72.7	27.3	260.7	171.3	19.7
1996	511	222.0	337.4	85.1	14.9	0.0	38.5	76.0	24.0	260.1	175.3	20.4
1997	558	219.0	334.0	86.6	13.4	0.0	38.7	75.9	24.1	254.8	168.9	20.0
1998	638	213.7	329.1	90.1	9.9	0.0	37.2	81.1	18.9	252.5	161.4	19.2
1999	576	217.2	333.1	86.8	13.0	0.2	37.2	79.2	20.8	254.2	165.6	19.6
2000	616	218.4	333.6	88.1	11.9	0.0	28.7	69.4	30.6	263.5	159.3	18.8
2001	506	221.2	336.6	87.5	12.5	0.0	36.1	68.1	31.9	256.0	168.9	20.1
2002	665	228.4	345.0	78.0	21.8	0.2	39.4	68.0	32.0	268.6	190.3	21.6
2003	798	242.0	358.5	57.9	42.1	0.0	36.4	60.8	39.2	285.8	207.6	20.9
2004	942	250.0	366.1	32.6	67.4	0.0	34.0	67.1	32.9	279.0	206.8	19.7
2005	683	249.9	365.9	31.5	68.5	0.0	38.4	81.0	19.0	282.3	217.3	19.9
2006	496	236.9	353.8	72.8	27.2	0.0	29.6	83.7	16.3	278.3	186.8	16.2
2007	568	238.7	355.4	67.6	32.4	0.0	36.6	84.8	15.2	276.1	199.4	16.5
2008	603	244.8	361.8	52.1	47.9	0.0	35.9	84.3	15.7	277.3	205.0	17.3
2009	678	246.8	363.3	47.6	52.4	0.0	39.7	87.4	12.6	276.9	213.8	17.5
2010	800	250.6	366.9	31.5	68.5	0.0	35.0	73.1	26.9	289.6	215.2	16.8
2011	677	256.8	373.2	13.0	87.0	0.0	39.4	84.3	15.7	292.5	233.4	17.9
2012	265	244.9	360.7	59.2	40.8	0.0	43.6	77.6	22.4	290.8	230.9	17.6
2013	483	243.4	360.2	60.7	39.3	0.0	37.0	79.6	20.4	290.2	213.2	15.9
2014	884	247.7	365.6	43.9	56.1	0.0	31.2	72.5	27.5	288.9	205.8	15.3
2015	575	248.4	365.8	40.8	59.0	0.2	42.0	67.5	32.5	293.7	233.6	17.9
2016	669	248.2	365.4	36.8	63.2	0.0	30.2	60.3	39.7	303.0	210.1	15.9

Tabela 5.6: Doba med prasiatvama in število krmnih dni na pujska po letih na farmi Krško

Leto	Št. pras.	DMP (dni)	do 160 dni (%)	161-200 dni (%)	≥201 dni (%)	Izl. (%)	DI (dni)	kDMP (dni)	G_L	$P_{\bar{z}}/$ leto	KD/ $P_{\bar{z}}$
1985	164	158.3	62.8	34.8	2.4	20.8	111.4	187.5	2.00	19.9	18.4
1986	1580	157.0	66.8	29.0	4.2	18.8	98.5	179.7	2.00	20.6	17.7
1987	2517	155.8	68.5	26.8	4.7	23.1	98.1	185.3	2.00	20.0	18.3
1988	1799	156.6	72.9	20.5	6.6	33.3	116.6	214.9	1.70	17.0	21.5
1989	2240	159.9	61.5	34.8	3.7	25.1	100.4	193.6	1.90	18.7	19.5
1990	2948	153.7	77.7	21.9	0.4	16.6	69.5	167.5	2.20	21.4	17.0
1991	2896	153.2	79.6	20.3	0.1	17.7	67.9	167.8	2.20	21.4	17.1
1992	3014	153.5	79.0	20.8	0.2	16.7	65.6	166.6	2.20	21.1	17.3
1993	2770	155.6	74.3	25.0	0.7	20.5	60.3	171.2	2.10	20.3	18.0
1994	2697	156.5	73.3	26.2	0.4	19.6	61.4	172.0	2.10	21.3	17.1
1995	2878	154.9	74.7	25.1	0.2	17.2	63.8	198.9	1.80	18.8	19.4
1996	2802	154.6	76.1	23.6	0.4	21.0	53.4	169.5	2.20	22.4	16.3
1997	2514	158.2	70.1	29.2	0.8	18.4	66.9	173.4	2.10	22.0	16.6
1998	2707	156.5	74.4	25.1	0.4	15.9	68.2	169.7	2.20	22.1	16.5
1999	2711	156.5	75.1	24.4	0.5	19.0	63.5	172.0	2.10	21.6	16.9
2000	2668	155.8	75.7	24.0	0.3	19.2	57.6	170.1	2.10	21.5	16.9
2001	2566	153.0	83.2	16.6	0.2	19.9	57.8	168.2	2.20	21.7	16.9
2002	2393	152.3	81.1	18.8	0.1	19.7	62.9	168.2	2.20	21.7	16.8
2003	2497	145.6	87.0	13.0	0.0	24.5	64.9	166.7	2.20	21.8	16.8
2004	2201	146.6	88.3	11.7	0.0	29.8	53.7	169.5	2.15	22.3	16.4
2005	2320	147.2	91.9	8.1	0.0	25.6	48.8	163.9	2.23	24.2	15.1
2006	2205	149.8	87.8	12.2	0.0	24.6	52.7	166.9	2.19	25.9	14.1
2007	1765	150.3	88.6	11.4	0.0	26.9	51.8	169.3	2.16	26.9	13.6
2008	1489	150.6	87.0	13.0	0.0	33.8	49.9	176.0	2.07	26.8	13.6
2009	1366	151.9	86.1	13.9	0.0	23.9	62.3	171.5	2.13	29.3	12.5
2010	1914	150.8	88.7	11.3	0.0	23.8	64.4	170.9	2.14	29.7	12.3
2011	2198	151.3	87.4	12.6	0.0	22.9	64.4	170.4	2.14	30.0	12.2
2012	1865	151.6	84.6	15.4	0.0	24.7	67.5	173.8	2.10	30.3	12.0
2013	1599	153.2	76.9	23.1	0.0	22.6	66.1	172.5	2.12	30.5	12.0
2014	1617	154.0	77.7	22.3	0.0	24.6	72.6	177.6	2.05	30.2	12.1
2015	1992	156.5	67.0	33.0	0.0	25.9	75.2	182.8	2.00	30.5	12.0
2016	2118	158.0	62.2	37.8	0.0	20.0	87.2	179.8	2.03	30.1	12.1

Tabela 5.7: Velikost gnezda ob rojstvu, gospodarnost priraje pujskov in delež letne obnove

črede svinj na farmi Krško

Leto	Št. pras.	Št. izl.	$P_{\bar{z}}/$ gn.	KD/ gn.	G_L	KD/ $P_{\bar{z}}$	Št. svinj v čredi	Remont (%)	G_S
1985	904	232	9.36	205.4	1.78	21.9	509	45.6	3.90
1986	2784	584	9.48	181.7	2.01	19.2	1386	42.2	4.76
1987	2956	861	9.95	184.9	1.97	18.6	1497	57.5	3.43
1988	2861	1360	9.40	210.4	1.73	22.4	1649	82.5	2.10
1989	3134	932	9.55	188.4	1.94	19.7	1618	57.6	3.36
1990	3561	661	9.58	163.8	2.23	17.1	1598	41.3	5.40
1991	3569	704	9.50	163.3	2.24	17.2	1597	44.1	5.07
1992	3553	660	9.40	161.8	2.26	17.2	1575	41.9	5.38
1993	3501	826	9.24	163.3	2.24	17.7	1566	52.8	4.23
1994	3311	1095	9.78	171.0	2.13	17.5	1551	70.6	3.02
1995	3591	999	9.94	169.4	2.15	17.0	1667	60.0	3.59
1996	3313	1069	10.12	170.4	2.14	16.8	1546	69.1	3.10
1997	3072	919	10.10	172.6	2.11	17.1	1452	63.3	3.34
1998	3345	894	9.91	168.1	2.17	17.0	1540	58.0	3.74
1999	3287	979	9.88	170.9	2.14	17.3	1539	63.6	3.36
2000	3284	885	9.75	168.1	2.17	17.2	1512	58.5	3.71
2001	3072	929	9.72	168.3	2.17	17.3	1417	65.6	3.31
2002	3058	1025	9.75	173.0	2.11	17.7	1449	70.7	2.98
2003	3302	1276	9.94	176.8	2.06	17.8	1603	79.6	2.59
2004	3143	1421	10.41	180.7	2.02	17.4	1556	91.3	2.21
2005	3003	1223	10.87	176.1	2.07	16.2	1449	84.4	2.46
2006	2701	928	11.80	170.6	2.14	14.5	1262	73.5	2.91
2007	2333	995	12.37	176.5	2.07	14.3	1152	86.4	2.39
2008	2092	1112	12.62	184.3	1.98	14.6	1071	103.9	1.91
2009	2044	876	13.24	185.6	1.97	14.0	1039	84.3	2.33
2010	2714	1028	13.60	183.9	1.98	13.5	1368	75.2	2.64
2011	2875	1094	13.76	185.3	1.97	13.5	1459	75.0	2.63
2012	2130	818	14.27	180.9	2.02	12.7	1056	77.5	2.60
2013	2082	751	14.15	181.9	2.01	12.9	1038	72.4	2.77
2014	2501	926	14.28	187.6	1.95	13.1	1285	72.0	2.70
2015	2567	1112	14.75	194.2	1.88	13.2	1366	81.4	2.31
2016	2787	820	14.44	187.1	1.95	13.0	1428	57.4	3.40

Tabela 5.8: Dolžina laktacije in starostna struktura po letih na farmi Krško

Leto	DOLŽINA LAKTACIJE (dni)							P R A S I T V E		
	Lakt. (dni)	do 14 dni (%)	15-19 dni (%)	20-24 dni (%)	25-29 dni (%)	30-34 dni (%)	≥35 dni (%)	prva (%)	2.-7. (%)	≥8 (%)
1985	26.3	3.9	1.4	34.8	59.9			81.8	18.2	0.0
1986	23.8	6.3	9.8	49.0	35.0			42.3	57.6	0.0
1987	24.3	5.1	12.7	48.1	34.1			14.3	85.7	0.0
1988	25.3	4.2	9.5	41.5	44.8			36.1	62.4	1.5
1989	27.2	6.3	3.4	30.4	59.9			26.4	65.7	7.9
1990	26.3	6.7	1.7	27.3	64.3			16.3	73.4	10.3
1991	27.1	5.4	1.7	18.8	74.1			17.7	66.5	15.8
1992	26.7	5.1	2.1	20.2	72.6			14.1	68.6	17.3
1993	28.2	7.5	2.3	8.6	81.6			19.4	61.3	19.1
1994	29.8	4.2	0.9	4.0	41.1	31.7	18.1	18.5	61.9	19.6
1995	29.0	9.2	1.3	10.4	37.2	25.5	16.4	25.0	56.8	18.2
1996	28.6	9.6	2.1	15.1	36.4	21.1	15.7	18.9	62.1	18.9
1997	32.5	8.6	1.0	1.6	18.4	35.3	35.1	22.8	59.5	17.7
1998	31.6	7.4	0.9	2.0	24.0	38.5	27.1	24.1	54.3	21.6
1999	30.5	7.8	0.9	4.5	32.0	35.4	19.5	21.5	58.4	20.2
2000	29.4	9.5	0.7	4.9	40.6	26.0	18.3	20.7	59.4	19.9
2001	28.2	10.0	1.5	10.5	46.6	16.6	14.9	19.8	58.0	22.2
2002	26.2	7.0	13.2	20.7	34.0	13.9	11.1	26.9	53.3	19.8
2003	19.7	3.0	54.6	34.1	7.9	0.3	0.0	27.8	54.2	18.0
2004	22.2	2.6	40.1	32.8	9.4	11.0	4.2	31.3	61.9	6.8
2005	23.9	5.5	37.6	27.0	1.4	19.4	9.1	26.2	70.8	2.9
2006	27.5	1.9	5.6	14.2	57.8	8.2	12.3	19.4	75.3	5.2
2007	27.5	2.0	0.8	17.7	61.6	8.7	9.2	26.5	65.7	7.8
2008	27.9	1.9	1.6	19.7	55.4	6.6	14.8	29.1	67.2	3.7
2009	29.4	1.2	1.7	12.5	49.7	15.0	19.9	38.5	59.7	1.8
2010	29.3	1.0	1.4	11.9	52.0	14.8	19.0	32.9	64.6	2.5
2011	29.3	1.8	0.8	15.6	46.8	14.5	20.6	28.1	68.9	3.0
2012	30.0	1.3	0.7	9.7	54.1	12.1	22.1	15.9	77.7	6.4
2013	30.8	1.4	0.6	10.5	47.6	11.1	28.8	27.1	62.4	10.5
2014	31.2	1.4	1.6	16.2	31.0	16.5	33.2	37.5	52.5	10.0
2015	33.7	1.7	0.3	12.0	25.4	17.6	43.0	26.9	68.7	4.4
2016	34.8	1.7	0.4	5.4	16.9	25.8	49.8	26.6	69.9	3.5

5.4 Interim obdobje in podstavitveni premor

Tabela 5.9: Interim obdobje po letih na farmi Krško

Leto	PRVESNICE				STARE SVINJE			
	IO (dni)	do 12 dni (%)	12-40 dni (%)	≥41 dni (%)	IO (dni)	do 12 dni (%)	12-40 dni (%)	≥41 dni (%)
1985	12.1	71.3	24.4	3.0				
1986	18.0	63.0	22.8	14.0	8.3	88.0	10.2	1.6
1987	19.4	62.2	22.5	15.3	9.1	85.4	11.3	3.3
1988	13.3	72.9	20.4	6.7	9.0	86.8	9.9	3.3
1989	16.0	62.0	28.4	9.6	9.9	82.7	14.3	3.0
1990	14.8	64.7	28.5	6.8	8.6	85.0	13.1	1.9
1991	10.9	77.1	20.5	2.4	8.0	85.2	14.3	0.5
1992	12.4	74.6	19.1	6.3	7.9	86.7	12.5	0.8
1993	13.3	70.3	23.6	6.1	8.2	85.4	13.2	1.4
1994	14.3	64.3	28.0	7.7	8.0	85.7	13.2	1.1
1995	12.8	69.1	26.6	4.3	7.7	86.4	12.6	1.0
1996	14.3	66.6	26.1	7.3	7.9	86.0	12.9	1.0
1997	14.0	65.8	26.7	7.5	7.7	86.7	11.7	1.6
1998	12.6	68.4	27.7	3.9	7.5	88.2	10.7	1.4
1999	14.0	65.6	27.8	6.7	7.8	85.0	14.1	0.8
2000	14.0	68.4	25.6	5.9	8.3	82.1	16.9	1.0
2001	12.8	60.8	36.9	2.2	8.0	85.1	14.1	0.8
2002	12.6	66.3	29.8	3.9	7.8	86.8	12.6	0.6
2003	11.1	74.8	21.6	3.6	7.9	88.8	9.7	1.7
2004	9.6	78.9	20.7	0.4	6.9	90.0	9.9	0.1
2005	7.5	86.1	13.9	0.0	6.3	91.8	8.2	0.0
2006	7.0	86.8	13.2	0.0	5.8	91.9	8.0	0.1
2007	7.3	87.6	12.1	0.3	6.0	89.0	11.0	0.0
2008	6.7	91.7	8.3	0.0	5.5	93.2	6.8	0.0
2009	6.4	90.5	9.5	0.0	6.1	89.2	10.6	0.2
2010	5.5	96.1	3.7	0.2	4.9	96.3	3.7	0.0
2011	5.7	94.0	5.9	0.1	5.4	93.0	7.0	0.0
2012	5.7	94.0	5.9	0.1	5.2	94.0	5.9	0.1
2013	5.7	92.0	8.0	0.0	5.8	89.0	11.0	0.0
2014	5.6	94.6	5.4	0.0	5.5	91.4	8.6	0.0
2015	5.8	93.9	6.1	0.0	5.1	94.4	5.6	0.0
2016	5.7	92.3	7.7	0.0	5.9	87.9	12.1	0.0

Tabela 5.10: Poodstavitveni premor po letih na farmi Krško

Leto	PRVESNICE					STARE SVINJE				
	Št. svinj	PP (dni)	do 12 dni (%)	13-60 dni (%)	≥61 dni (%)	Št. svinj	PP (dni)	do 12 dni (%)	13-60 dni (%)	≥61 dni (%)
1985	320	15.1	62.2	35.6	0.9					
1986	1210	24.4	51.5	38.6	9.5	1140	13.1	75.8	22.0	2.1
1987	835	29.3	46.0	39.1	14.9	2897	15.5	70.4	17.8	11.8
1988	812	22.7	55.7	36.3	8.0	2132	17.8	70.2	23.4	6.4
1989	1084	21.4	49.6	47.3	3.1	2197	15.5	68.5	29.7	1.8
1990	652	17.6	56.7	42.9	0.4	2916	10.9	78.3	21.6	0.1
1991	584	13.1	70.4	29.6	0.0	2957	10.6	76.5	23.5	0.0
1992	599	15.0	64.8	35.2	0.0	2995	10.3	78.3	21.7	0.0
1993	622	15.7	62.4	37.3	0.3	2680	10.2	78.7	21.3	0.0
1994	600	16.3	58.8	41.2	0.0	2691	10.4	77.5	22.5	0.0
1995	651	14.6	64.0	35.8	0.2	2736	9.8	79.1	20.9	0.0
1996	545	16.3	59.4	40.2	0.4	2635	9.8	79.6	20.4	0.0
1997	509	16.5	58.0	42.0	0.0	2496	10.0	78.9	21.1	0.0
1998	621	14.9	61.8	37.9	0.2	2626	9.3	81.5	18.3	0.0
1999	605	17.8	55.3	42.0	2.5	2651	10.1	77.1	22.7	0.0
2000	609	17.4	59.1	39.4	1.5	2524	10.3	75.6	24.3	0.0
2001	480	15.1	53.9	45.9	0.2	2500	9.5	80.3	19.8	0.0
2002	516	15.3	57.8	42.2	0.0	2341	9.3	81.8	18.2	0.0
2003	767	13.7	65.7	34.3	0.0	2268	9.7	82.7	17.1	0.0
2004	860	11.5	71.3	28.7	0.0	1792	8.1	85.1	14.8	0.1
2005	654	8.7	82.0	18.0	0.0	1998	6.9	89.5	10.5	0.0
2006	567	7.4	85.4	14.6	0.0	2008	5.9	91.3	8.4	0.3
2007	259	7.5	86.9	13.1	0.0	1650	6.2	88.2	11.8	0.0
2008	589	7.0	90.3	9.7	0.0	1046	5.5	92.9	7.1	0.0
2009	381	6.5	90.3	9.7	0.0	1079	6.2	88.9	11.1	0.0
2010	714	5.5	96.1	3.7	0.2	1424	4.9	96.2	3.7	0.1
2011	635	5.7	94.0	5.9	0.1	1794	5.4	93.0	7.0	0.0
2012	301	5.7	94.0	5.9	0.1	1690	5.2	94.0	5.9	0.1
2013	413	5.8	91.5	8.5	0.0	1346	5.8	88.8	11.2	0.0
2014	560	5.7	94.5	5.5	0.0	1333	5.5	91.4	8.6	0.0
2015	659	5.8	93.9	6.1	0.0	1579	5.1	94.4	5.6	0.0
2016	597	5.7	92.3	7.7	0.0	1799	5.9	87.9	12.1	0.0

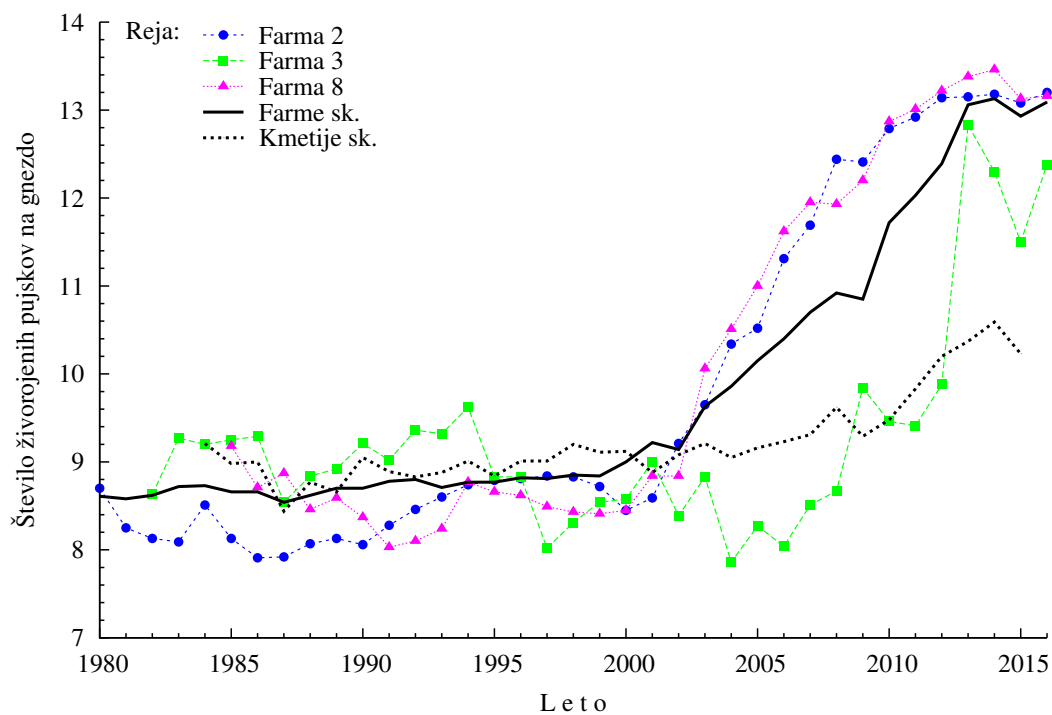
5.5 Analiza izločitev

Tabela 5.11: Izločitve svinj po letih na farmi Krško

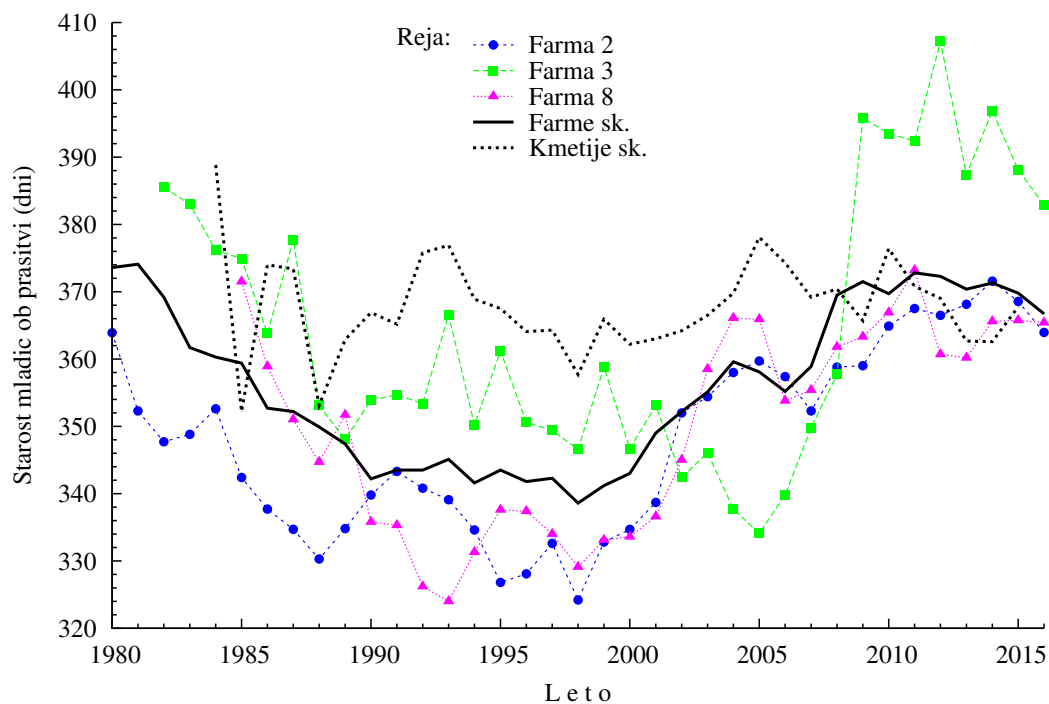
Leto	MLADICE						STARE SVINJE						
	Št. izl.	DOI (dni)	Izločitve		Vzrok izločitve			Št. izl.	DI (dni)	Izločitve		Vzrok izločitve	
			pred	po pr.	8	9	10			pred	po pr.	9	10
1985	195	149.1			5.6	35.9	11.8	126	87.3	53.2	46.8	15.1	7.9
1986	233	139.1			2.6	62.7	15.5	475	98.6	43.0	57.1	28.4	12.6
1987	147	115.8				62.6	10.9	866	93.6	34.6	65.4	23.7	12.9
1988	437	138.4			0.5	63.6	22.7	824	122.8	32.3	67.7	35.6	19.0
1989	168	120.3				75.6	6.7	725	98.1	37.7	62.3	31.9	17.8
1990	76	82.8				36.8	42.1	608	67.0	54.0	46.0	13.0	15.9
1991	86	71.6				38.4	47.7	633	65.8	54.7	45.3	12.5	21.5
1992	64	76.8				45.3	29.7	654	62.9	58.1	41.9	11.0	19.1
1993	335	46.8			60.9	9.6	17.9	706	60.4	61.9	38.1	10.8	15.2
1994	463	54.9	77.3	22.7	65.2	7.6	11.9	604	65.4	53.8	46.2	13.6	19.4
1995	341	62.7	68.3	31.7	52.2	10.0	16.4	657	63.4	65.1	34.9	9.3	16.3
1996	336	55.5	80.4	19.6	50.6	4.5	11.6	685	59.4	69.6	30.4	7.2	14.9
1997	367	54.1	75.7	24.3	44.4	4.6	14.7	513	73.0	57.3	42.7	5.7	19.3
1998	377	53.5	78.0	22.0	45.1	5.3	5.8	603	66.5	61.4	38.6	7.5	16.3
1999	322	59.6	75.5	24.5	45.3	10.2	7.1	632	68.1	60.4	39.6	8.9	16.8
2000	232	62.4	62.9	37.1	39.7	15.1	15.5	615	59.6	68.0	32.0	8.5	12.0
2001	318	58.3	72.3	27.7	42.1	12.6	11.6	628	67.2	60.5	39.5	14.6	12.1
2002	475	72.7	70.9	29.1	51.2	18.1	6.3	597	65.3	63.0	37.0	17.4	12.4
2003	456	86.1	58.8	41.2	40.4	28.3	9.4	984	58.1	70.9	29.1	10.9	14.1
2004	464	80.8	68.3	31.7	52.8	15.5	11.4	870	54.9	66.6	33.4	15.3	11.5
2005	378	82.1	81.2	18.8	55.0	7.4	7.1	733	49.9	71.4	28.6	9.8	10.1
2006	215	79.7	86.5	13.5	57.2	6.5	3.7	675	54.5	77.5	22.5	8.1	7.0
2007	381	75.9	83.5	16.5	57.5	9.7	3.7	690	53.6	80.1	19.9	7.1	7.0
2008	324	76.0	87.7	12.3	62.3	6.5	2.8	694	51.5	84.6	15.4	5.2	6.1
2009	485	78.3	84.5	15.5	54.4	9.3	3.7	453	62.6	76.6	23.4	9.9	7.1
2010	375	92.9	72.8	27.2	47.2	9.6	8.8	624	63.9	70.5	29.5	7.4	9.5
2011	361	96.2	83.7	16.3	70.1	5.8	4.4	669	65.8	71.7	28.3	6.4	8.2
2012	262	88.3	82.1	17.9	66.0	5.3	7.3	525	69.2	63.6	36.4	5.7	13.5
2013	258	90.8	73.3	26.7	56.2	5.4	14.7	489	65.6	63.2	36.8	6.5	16.2
2014	461	89.3	75.1	24.9	62.0	9.5	8.9	622	70.4	63.2	36.8	10.0	10.6
2015	368	93.3	61.1	38.9	55.4	11.7	17.9	578	79.0	55.4	44.6	9.7	14.4
2016	291	104.5	59.5	40.5	51.9	16.8	14.8	601	84.7	52.6	47.4	14.5	13.6

Poglavje 6

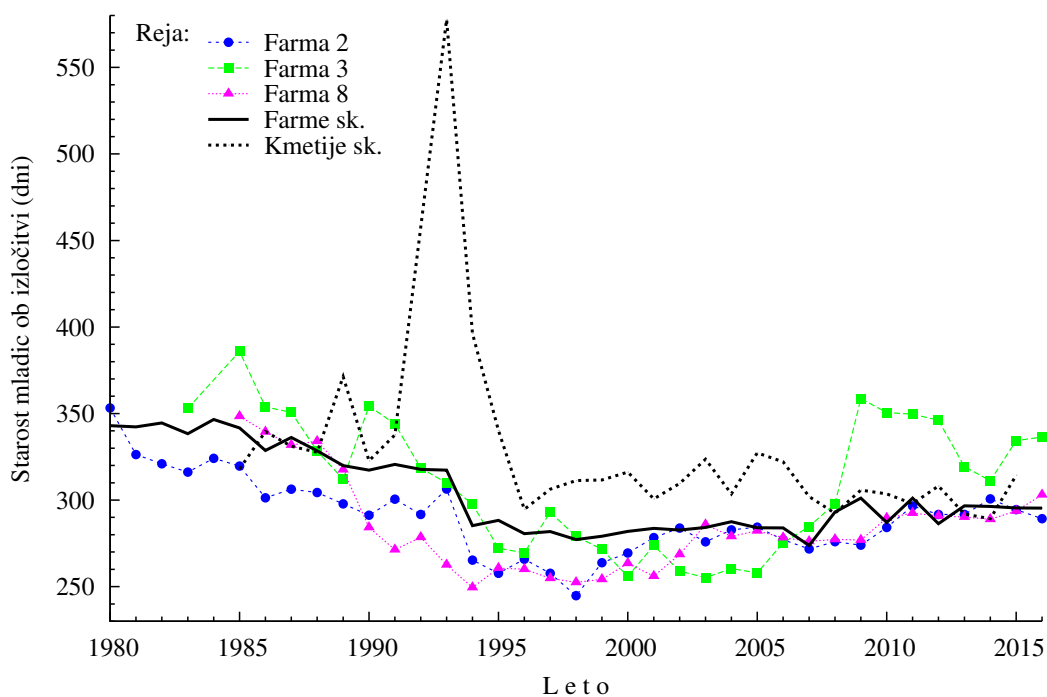
Grafični prikaz rezultatov plodnosti



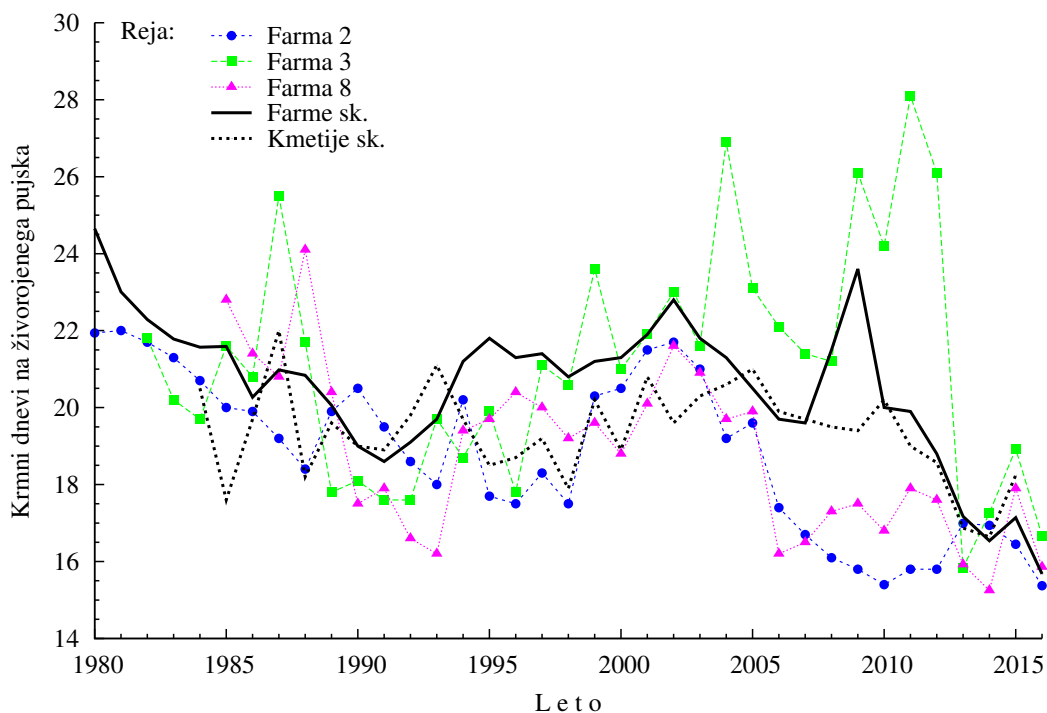
Slika 6.1: Število živorojenih pujskov pri mladicah v rejah prašičev v Sloveniji po letih



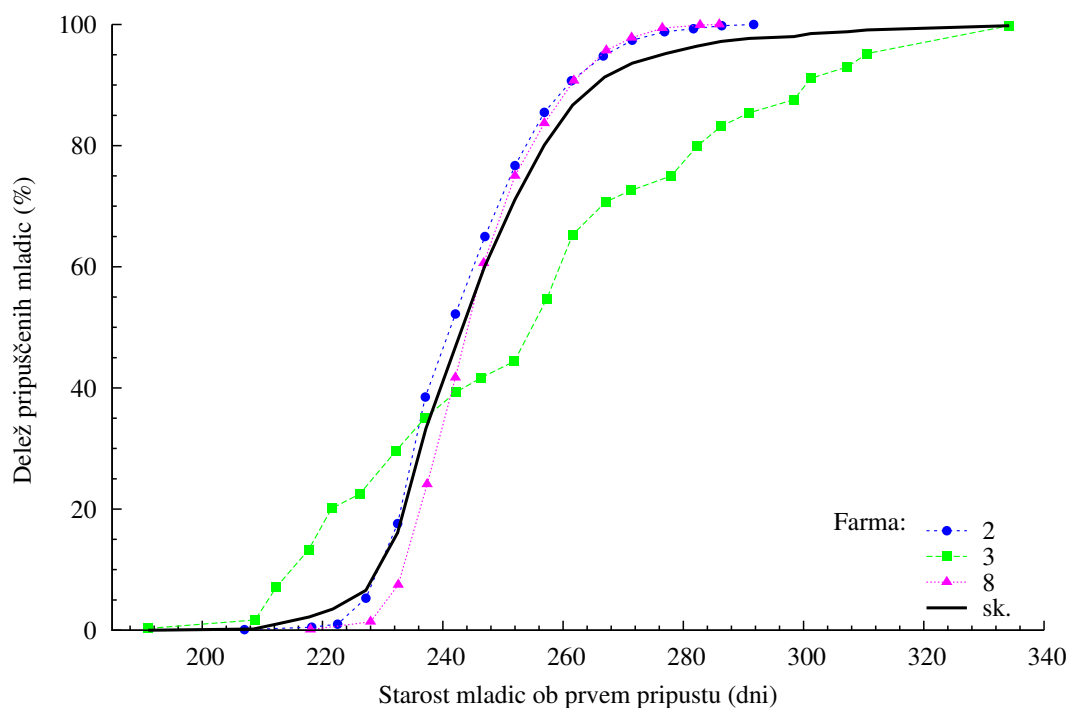
Slika 6.2: Starost mladic ob prasniti v rejah prašičev v Sloveniji po letih



Slika 6.3: Starost mladic ob izločitvi v rejah prašičev v Sloveniji po letih



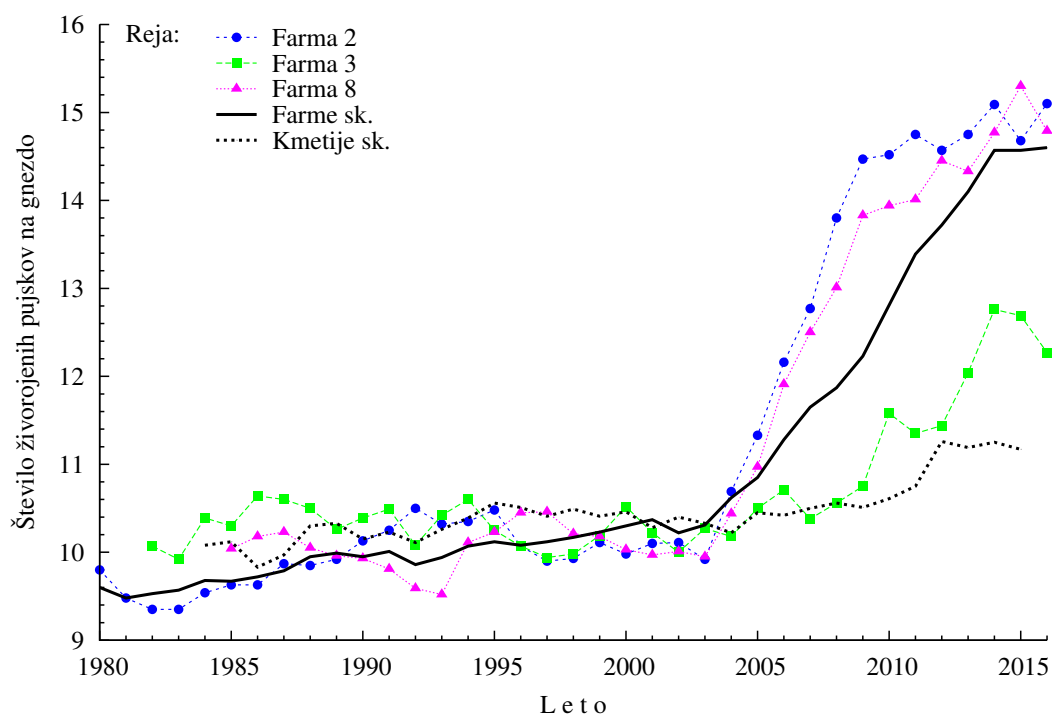
Slika 6.4: Število krmnih dni na živorojenega pujska pri mladicah v rejah prašičev v Sloveniji po letih



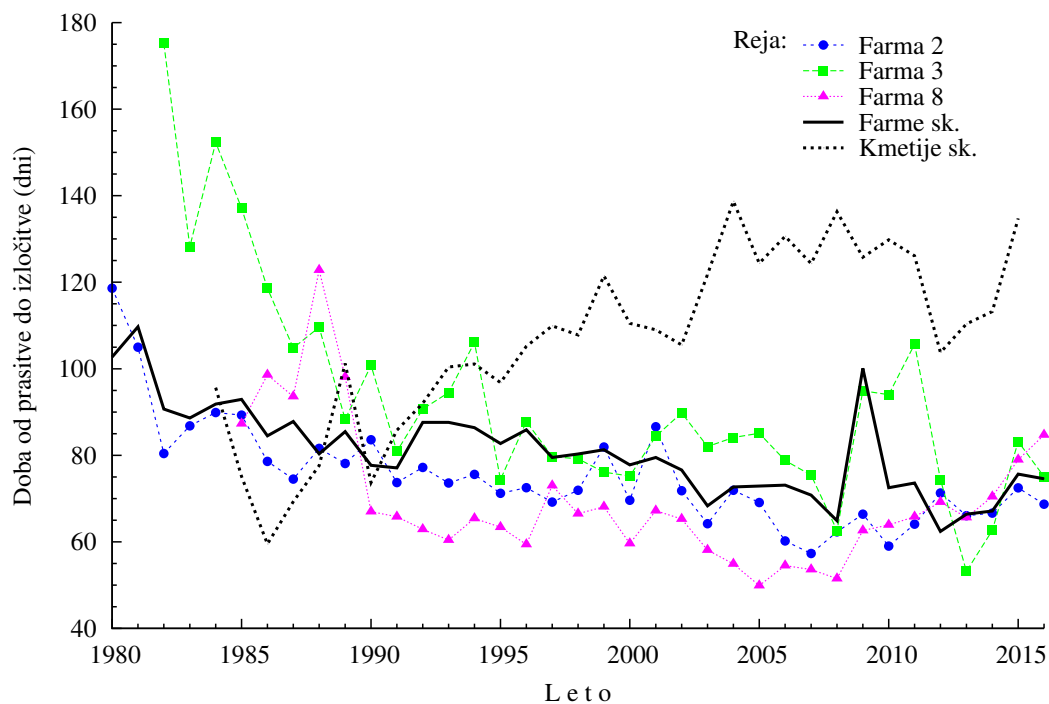
Slika 6.5: Distribucija starosti mladic ob prvem pripustu na farmah prašičev v Sloveniji v letu 2016



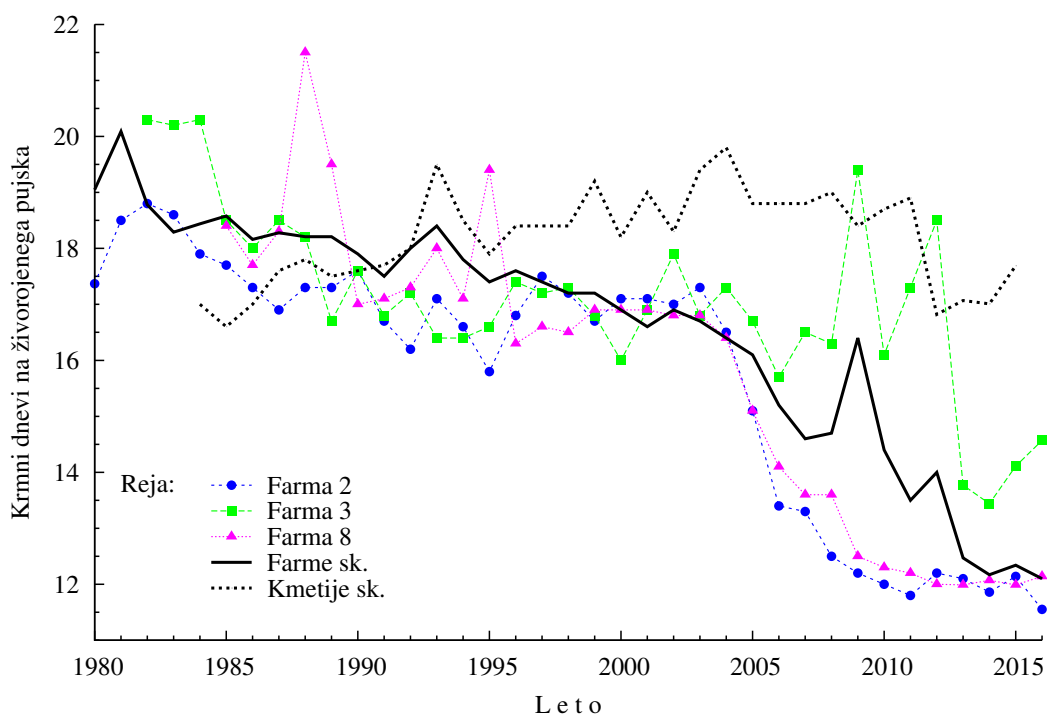
Slika 6.6: Starost mladic ob pravitvi in velikost gnezda pri mladicah na farmah prašičev v Sloveniji v letu 2016



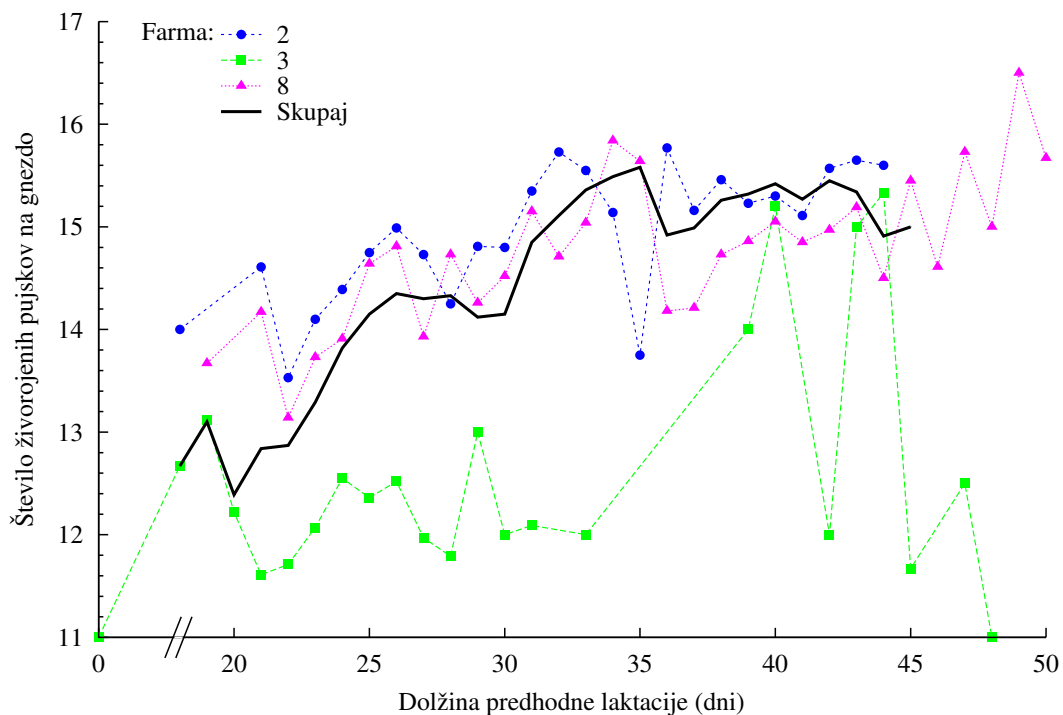
Slika 6.7: Število živorojenih pujskov pri starih svinjah v rejah prašičev v Sloveniji po letih



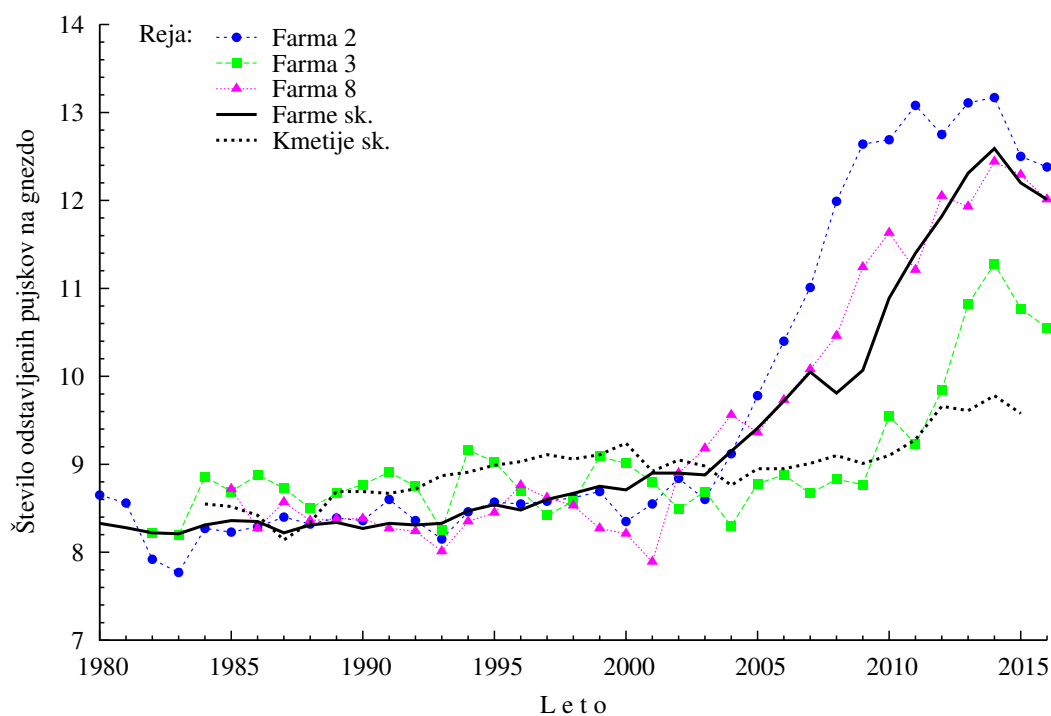
Slika 6.8: Doba od prasitve do izločitve pri starih svinjah v rejah prašičev v Sloveniji po letih



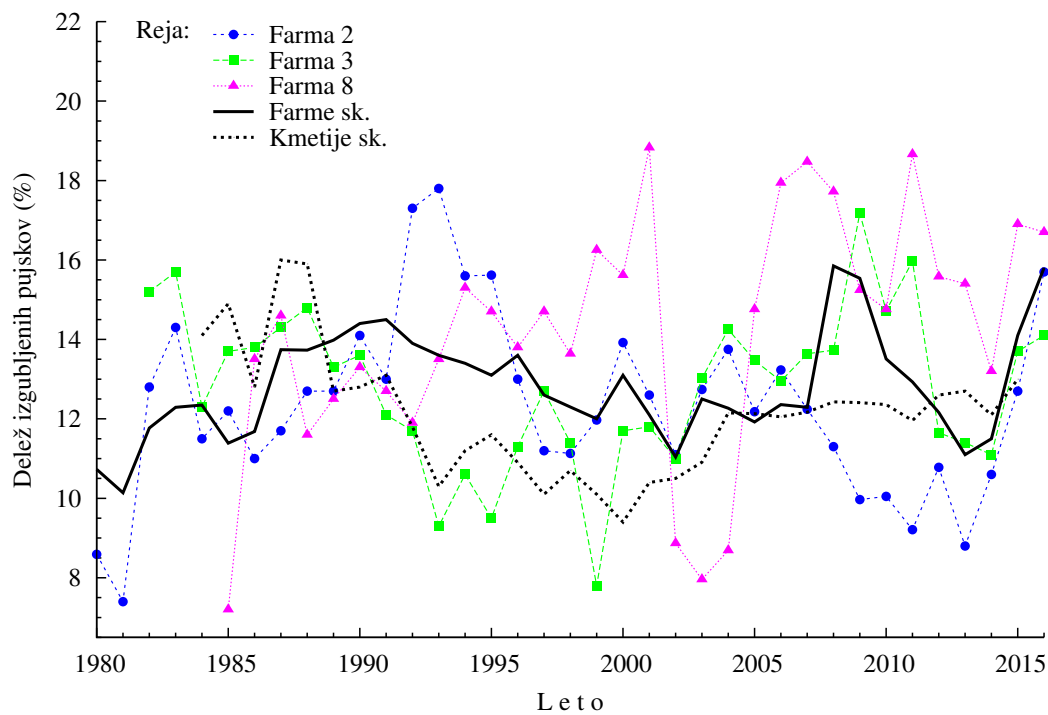
Slika 6.9: Število krmnih dni na živorojenega pujska pri starih svinjah v rejah prašičev v Sloveniji po letih



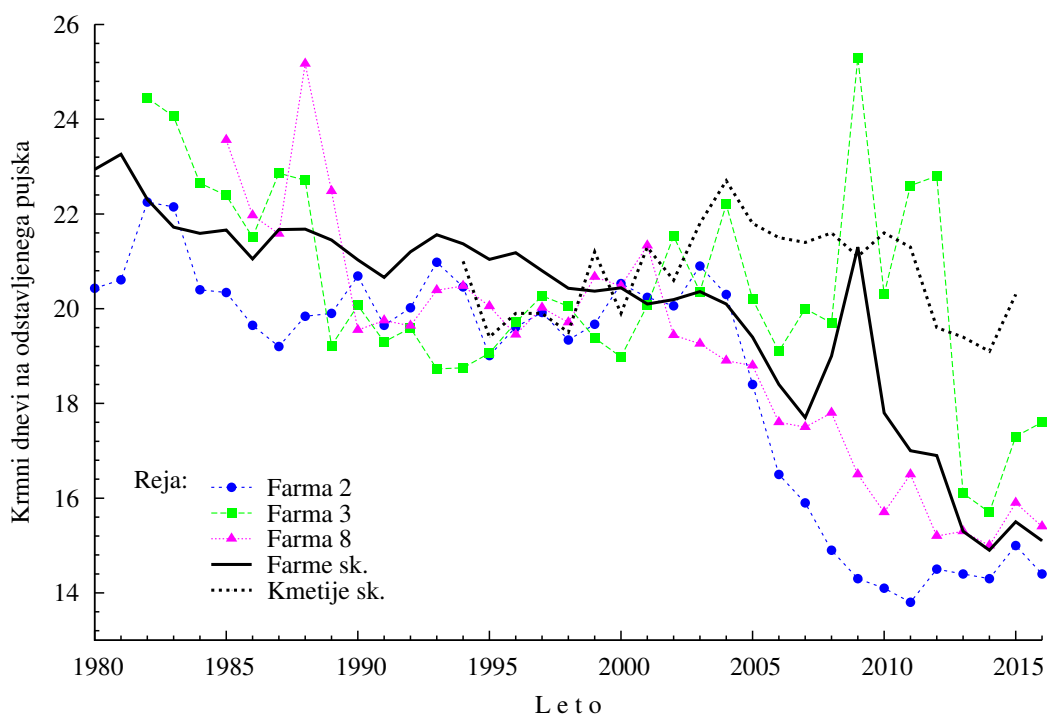
Slika 6.10: Dolžina predhodne laktacije in velikost gnezda ob rojstvu v rejah prašičev v Sloveniji v letu 2016



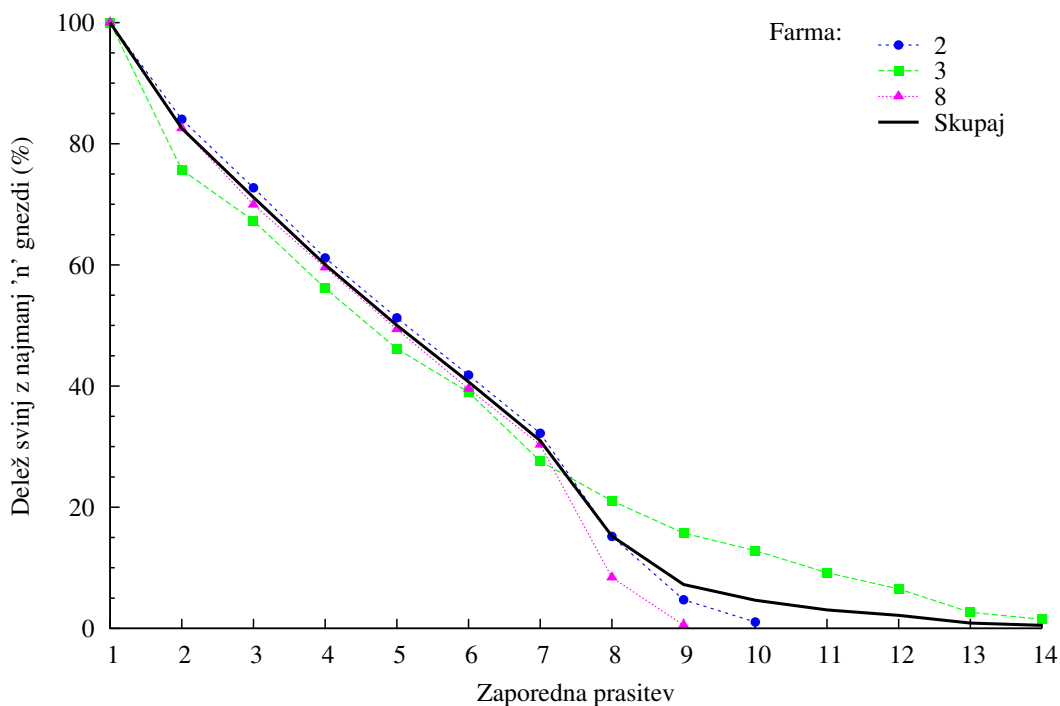
Slika 6.11: Število odstavljenih pujskov na gnezdo v rejah prašičev v Sloveniji po letih



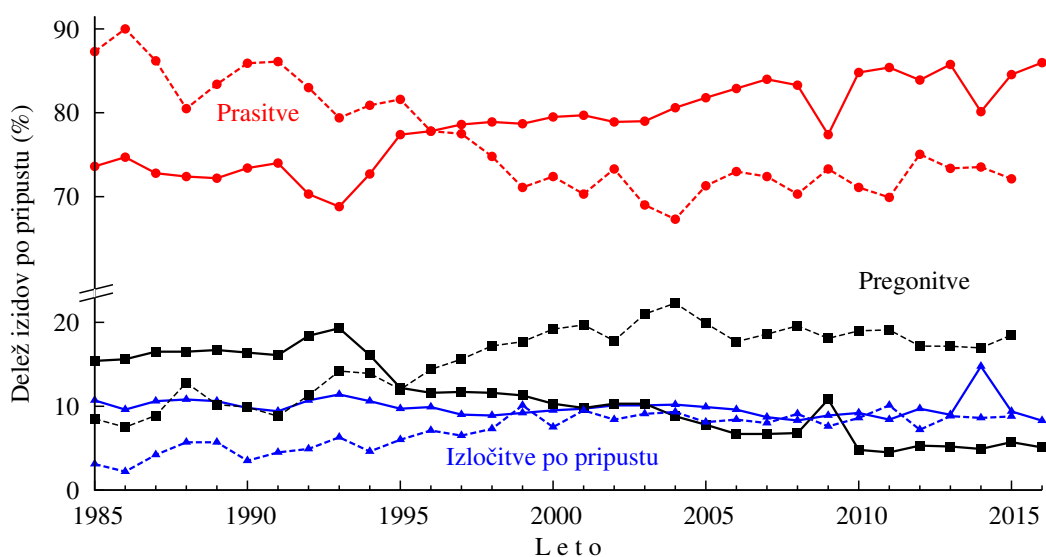
Slika 6.12: Delež izgubljenih pujskov v rejah prašičev v Sloveniji po letih



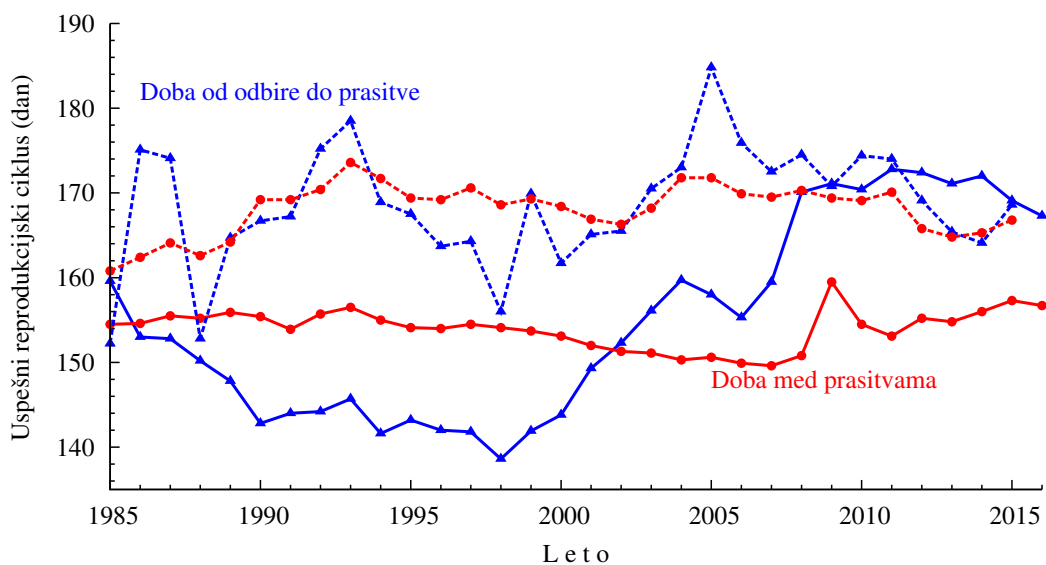
Slika 6.13: Število krmnih dni na odstavljenega pujska v rejah prašičev v Sloveniji po letih



Slika 6.14: Starostna struktura črede plemenskih svinj na farmah prašičev v Sloveniji v letu 2016



Slika 6.15: Delež izidov po pripustu na farmah (polna črta) prašičev in kmetijah (prekinjena črta) skupaj v Sloveniji po letih



Slika 6.16: Dolžina uspešnega reprodukcijskega cikelusa pri mladica in starih svinjah na farmah (polna črta) prašičev in kmetijah (prekinjena črta) v Sloveniji po letih