
Oddelek za zootehniko

Groblje 3, Domžale

Tel.: 01-3203-920

Fax.: 01-7241-005

ANALIZA PLODNOSTI SVINJ NA KMETIJAH

ZA LETO 2016

Dokument št. 12-1/2017

VODENJE REPRODUKCIJE NA ZAVODIH:

Mag. Darja PREVALNIK

Mag. Marjeta ŽENKO

Mag. Andrej KASTELIC

Mag. Sašo SEVER

OBDELAVA IN OCENA REZULTATOV:

Prof. dr. Milena KOVAČ

Doc. dr. Špela MALOVRH

Janja URANKAR, univ. dipl. inž. zoot.

Karmen LOŽAR, dipl. inž. zoot.

Irena ULE

Meta MARUŠIČ

Stanka PAVLIN

DOMŽALE, junij 2017

Kazalo

1 Primerjava plodnosti na kmetijah v letu 2016	5
1.1 Velikost gnezda	5
1.2 Analiza pripustov	7
1.3 Analiza reprodukcijskega ciklusa	13
1.4 Analiza izločitev	23
2 Kmetije skupaj po letih	25
2.1 Velikost gnezda	25
2.2 Analiza pripustov	26
2.3 Analiza reprodukcijskega ciklusa	29
2.4 Interim obdobje in poodstavitveni premor	33
2.5 Analiza izločitev	35
3 Grafični prikaz rezultatov plodnosti	37

Slike

3.1	Število živorojenih pujskov pri mladicah na kmetijah po zavodih v Sloveniji v letu 2016	37
3.2	Število živorojenih pujskov pri starih svinjah na kmetijah po zavodih v Sloveniji v letu 2016	37
3.3	Število živorojenih pujskov na gnezdo in starost mladic ob praritvi na kmetijah v Sloveniji v letu 2016	38
3.4	Število živorojenih pujskov na gnezdo in doba med praritvama na kmetijah v Sloveniji v letu 2016	38
3.5	Število krmnih dni na živorojenega pujska in starost mladic ob praritvi na kmetijah v Sloveniji v letu 2016	39
3.6	Število krmnih dni na živorojenega pujska in doba med praritvama na kmetijah v Sloveniji v letu 2016	39
3.7	Delež pregonitev in doba od pripusta do pregonitve na kmetijah v Sloveniji v letu 2016	40
3.8	Delež izgubljenih pujskov na kmetijah po zavodih v Sloveniji v letu 2016	40
3.9	Lastna cena odstavljenega pujska v EUR na kmetijah v Sloveniji v letu 2016	41
3.10	Dodatni stroški neproduktivnih faz na gnezdo v EUR na kmetijah v Sloveniji v letu 2016	41
3.11	Število živorojenih in odstavljenih pujskov na gnezdo pri mladicah in starih svinjah na kmetijah v Sloveniji po letih	42
3.12	Dolžina uspešnega reprodukcijskega ciklusa pri mladicah in starih svinjah na kmetijah v Sloveniji po letih	42
3.13	Dolžina neuspešnega reprodukcijskega ciklusa na kmetijah v Sloveniji po letih	43
3.14	Dolžina poodstavitvenega premora in interim obdobja pri privesnicah in svinjah po 2. praritvi na kmetijah v Sloveniji po letih	43
3.15	Delež praritev pri mladicah in starih svinjah na kmetijah v Sloveniji po letih	44
3.16	Število krmnih dni na gnezdo pri mladicah (KD/gn - mladice) in starih svinjah (KD/gn - stare svinje) ter na živorojenega pujska pri mladicah (KD/pž - mladice) in starih svinjah (KD/pž - stare svinje) na kmetijah v Sloveniji po letih	44

Oznake

DOP	doba od odbire do prasiatve
DMP	doba med prasiatvama
IO	interim obdobje
PP	poodstavitveni premor
DOI	doba od odbire do izločitve
DI	doba od prasiatve do izločitve
DPI	doba od pripusta do izločitve
DPP	doba od pripusta do pregonitve
kDMP	korigirana doba med prasiatvama
kDOP	korigirana doba od odbire do prasiatve
G_S	število gnezd na svinjo v proizvodnem obdobju
G_L	število gnezd na svinjo letno
$P_{\dot{Z}}$	število živorojenih pujskov
P_O	število odstavljenih pujskov
KD	krmni dnevi
PF	produktivne faze
št.	število
Sk.	skupaj
gn.	gnezdo
prip. (pr.)	pripust
pras.	prasiatve
Izl.	izločitve, izločenih
Usp.	uspešni
Lakt.	laktacija
Preg.	pregonitev

Šifrant izločitvev

8	izostanek bukanja
9	nebreje-nepregonjene
10	večkratna pregonitev

Opombe: Za leto 2016 števila gnezd na svinjo v proizvodnem obdobju po kmetijah ne izpisujemo zaradi neenakomerne obnove (manjše črede, povečevanje čred, ...).

Poglavje 1

Primerjava plodnosti na kmetijah v letu 2016

1.1 Velikost gnezda

Tabela 1.1: Velikost gnezda na kmetijah

Rejec	MLADICE			STARE SVINJE						SKUPAJ		
	Št. pras.	DOP (dni)	$P_{\bar{z}}$ /gn.	Št. pras.	DMP (dni)	Lakt. (dni)	IO (dni)	PP (dni)	$P_{\bar{z}}$ /gn.	Št. pras.	$P_{O/}$ gn.	Izgube (%)
30023	9	221.3	9.33	67	176.1	36.3	18.1	23.4	11.01	76	9.14	15.5
30037	17	152.4	9.65	67	169.5	38.8	9.5	14.4	10.82	84	9.79	7.5
30065	0			30	170.3	31.5	20.0	22.2	13.13	30	11.17	15.0
30077	64	192.9	12.08	137	163.0	29.8	8.9	16.4	12.14	201	11.17	7.8
30152	22	202.3	8.77	176	162.4	26.9	7.0	19.2	10.23	198	9.53	5.4
30504	27	148.9	12.44	163	155.4	31.2	6.4	7.9	12.81	190	10.64	16.6
30511	9	149.2	10.89	33	220.7	32.2	33.1	72.7	12.61	42	9.60	21.6
30745	14	157.3	11.21	57	177.6	31.0	11.2	30.1	10.58	71	8.76	18.2
40002	12	162.1	11.00	55	165.7	33.7	6.9	14.0	10.98	67	10.69	2.7
40005	16	138.7	10.63	88	171.3	33.6	8.5	21.0	10.80	104	9.99	7.2
40017	41	162.3	11.98	89	165.3	33.0	7.3	15.9	12.96	130	10.62	16.1
40164	13	158.3	11.00	46	166.1	33.2	9.3	18.1	10.98	59	9.25	15.7
40222	28	184.8	12.11	82	157.4	33.1	5.3	9.8	12.73	110	9.41	25.2
40267	12	150.5	10.17	83	168.0	30.8	6.2	21.0	11.39	95	8.97	20.1
40504	11	224.5	11.36	52	187.3	41.6	12.9	29.9	10.65	63	9.78	9.3
40545	12	202.6	11.83	58	191.3	32.9	35.7	42.3	11.03	70	9.83	12.0
40620	21	146.2	10.05	138	161.4	31.4	6.4	14.3	10.71	159	9.62	9.4
40649	4	123.8	10.25	49	153.6	28.8	5.7	8.6	12.57	53	11.34	8.5
40825	18	178.7	10.00	46	172.2	39.0	13.5	17.0	11.33	64	10.06	8.1
40895	11	140.4	10.73	30	116.1	21.2	4.2	10.9	13.10	41	10.71	14.1
31007	19	179.3	11.63	62	157.0	35.6	5.4	6.4	12.73	81	11.83	5.1
31025	13	182.5	10.77	46	166.9	33.2	11.2	18.2	11.20	59	9.98	10.1
31026	14	205.4	11.07	103	161.7	34.2	8.2	11.9	11.99	117	10.27	13.5
31059	4	260.8	13.25	13	188.5	39.5	8.5	33.2	11.00	17	6.94	39.8
31060	19	148.9	11.32	39	176.7	31.2	10.7	31.3	12.95	58	8.52	31.4
31084	8	235.0	11.00	51	159.8	30.9	10.5	15.2	11.53	59	9.19	19.8
31301	64	158.0	10.00	250	158.0	24.1	11.2	17.9	11.30	314	8.69	21.2
31304	7		9.57	47	160.7	31.5	8.4	14.0	9.43	54	8.44	10.6
31305	34	160.6	9.65	256	158.7	25.7	7.9	16.9	11.11	290	9.87	9.8
31306	10	144.9	9.00	18	173.7	36.8	19.1	21.5	12.17	28	7.54	31.7
31307	29	188.3	10.07	62	157.5	34.8	6.1	8.3	10.39	91	7.08	31.2
31309	30	140.5	11.37	83	158.3	33.1	6.7	9.3	13.18	113	9.82	22.6
31311	5	128.0	9.00	57	162.0	32.9	6.2	14.4	12.53	62	10.52	14.1
31312	26	147.8	10.77	91	165.0	30.7	10.4	19.1	11.85	117	9.91	14.7
31313	7		8.86	53	191.9	41.2	22.3	35.7	10.26	60	7.83	22.4
31314	23	165.2	12.30	87	168.3	34.2	9.3	18.5	11.47	110	9.59	17.6
31316	22	134.0	9.45	74	162.9	30.5	6.5	17.2	10.74	96	9.70	7.2
31353	13	137.5	9.54	62	157.8	30.3	11.8	12.1	12.74	75	10.05	17.5
31358	22	158.3	9.73	71	164.0	25.5	10.6	24.0	11.45	93	9.12	17.4
31359	15	199.1	11.80	13	154.6	31.3	5.2	8.6	11.92	28	9.43	20.5
31387	24	152.9	9.71	79	170.3	42.2	9.9	11.6	11.65	103	9.72	13.2
31388	9		8.33	46	175.7	33.0	7.2	27.7	11.17	55	8.55	20.2

Rejec	MLADICE			STARE SVINJE						SKUPAJ		
	Št. pras.	DOP (dni)	P_Z /gn.	Št. pras.	DMP (dni)	Lakt. (dni)	IO (dni)	PP (dni)	P_Z /gn.	Št. pras.	P_O /gn.	Izgube (%)
31419	10	150.3	9.20	21	189.4	30.7	15.0	46.6	9.95	31	8.74	10.0
31620	10	150.0	11.60	42	159.4	30.6	6.3	13.4	12.69	52	10.60	15.1
31984	15	133.1	10.07	58	171.6	28.6	12.0	27.5	10.86	73	9.77	8.7
41638	45	233.5	11.07	148	162.4	26.5	8.1	20.4	11.72	193	10.45	9.7
41784	30	135.0	10.37	136	151.4	29.4	5.3	6.5	11.76	166	10.51	8.7
32001	9	137.0	11.44	27	182.0	29.5	21.0	35.5	10.89	36	8.97	18.6
32003	6	190.3	10.83	15	226.1	30.9	46.5	78.9	11.33	21	10.29	8.1
32007	5	119.0	10.20	16	182.3	42.7	14.3	25.4	10.81	21	9.10	14.7
32010	25	165.6	10.64	55	157.4	27.3	7.0	15.3	11.60	80	10.25	9.3
33310	18	207.6	12.72	126	163.1	31.4	9.8	15.9	12.15	144	10.79	11.7
Sk.	951	169.2	10.76	3853	164.6	31.1	9.7	18.0	11.55	4804	9.79	14.1

1.2 Analiza pripustov

Tabela 1.2: Analiza pripustov mladic na kmetijah

Rejec	S K U P A J							PRVI PRIPUST				DRUGI IN VIŠJI			
	Št. pr.	Usp. pr. (%)	Izl. po pr. (%)	Preg. (%)	DPI (dni)	DPP (dni)	P _Z /pr.	Št. pr.	Prvi (%)	Usp. (%)	P _Z /pr.	Št. pr.	≥2 (%)	Usp. (%)	P _Z /pr.
30023	15	40.0	20.0	40.0	138.0	45.8	3.6	8	53.3	37.5	3.3	7	46.7	42.9	4.0
30037	140	80.7	5.7	13.6	39.6	32.2	7.8	116	82.9	86.2	8.4	24	17.1	54.2	4.9
30065	0							0				0			
30077	85	75.3	5.9	18.8	97.8	32.6	9.1	68	80.0	77.9	9.7	17	20.0	64.7	6.9
30152	28	71.4	7.1	21.4	125.5	63.7	6.1	25	89.3	76.0	6.3	3	10.7	33.3	4.3
30504	37	73.0		27.0		21.5	9.1	28	75.7	75.0	9.8	9	24.3	66.7	6.9
30511	6	50.0		50.0		115.0	5.2	5	83.3	60.0	6.2	1	16.7		
30745	12	91.7	8.3		63.0		10.1	12	100.0	91.7	10.1	0			
40002	112	88.4	5.4	6.3	43.5	26.6	9.7	97	86.6	90.7	10.0	15	13.4	73.3	
40005	0							0				0			
40017	55	65.5	16.4	18.2	103.8	56.3	7.9	44	80.0	63.6	7.6	11	20.0	72.7	9.4
40164	197	72.6	8.1	19.3	67.4	31.4	8.1	160	81.2	75.0	8.4	37	18.8	62.2	
40222	74	39.2	14.9	46.0	50.5	41.3	4.7	40	54.1	37.5	4.2	34	46.0	41.2	5.3
40267	131	75.6	5.3	19.1	46.9	32.2	7.7	111	84.7	76.6	7.8	20	15.3	70.0	7.2
40504	14	50.0	21.4	28.6	64.7	44.8	5.5	10	71.4	50.0	5.9	4	28.6	50.0	4.5
40545	15	80.0		20.0		117.3	9.5	13	86.7	76.9	9.1	2	13.3	100.0	12.0
40620	22	95.5		4.6		23.0	9.6	21	95.5	95.2	9.5	1	4.6	100.0	12.0
40649	0							0				0			
40825	41	63.4	4.9	31.7	47.5	33.5	6.3	28	68.3	57.1	5.6	13	31.7	76.9	7.9
40895	1	100.0					15.0	1	100.0	100.0	15.0	0			
31007	28	82.1	7.1	10.7	69.5	56.3	9.5	25	89.3	84.0	9.6	3	10.7	66.7	8.7
31025	24	54.2	8.3	33.3	157.0	63.1	5.8	17	70.8	52.9	6.1	7	29.2	57.1	5.1
31026	15	93.3	6.7		83.0		10.3	13	86.7	100.0	11.0	2	13.3	50.0	6.0
31059	10	40.0		40.0		119.8	5.3	7	70.0	28.6	3.7	3	30.0	66.7	9.0
31060	42	71.4	11.9	16.7	176.2	47.0	8.1	35	83.3	71.4	8.0	7	16.7	71.4	8.3
31084	9	88.9		11.1		104.0	9.8	8	88.9	87.5	9.4	1	11.1	100.0	13.0
31301	86	74.4	3.5	22.1	154.7	56.1	7.4	69	80.2	76.8	7.4	17	19.8	64.7	7.7
31304	8	87.5	12.5		139.0		8.4	8	100.0	87.5	8.4	0			
31305	49	69.4	4.1	24.5	158.5	57.8	6.7	33	67.4	66.7	6.4	16	32.7	75.0	7.4
31306	79	57.0	24.1	19.0	88.8	31.9	5.0	64	81.0	59.4	5.2	15	19.0	46.7	
31307	57	64.9	33.3	1.8	151.8	23.0	6.5	56	98.3	64.3	6.4	1	1.8	100.0	12.0
31309	132	89.4	4.6	6.1	30.3	30.4	10.2	116	87.9	88.8	9.9	16	12.1	93.8	12.2
31311	6	83.3		16.7		79.0	7.5	6	100.0	83.3	7.5	0			
31312	36	72.2	16.7	11.1	102.8	32.5	7.8	32	88.9	75.0	8.1	4	11.1	50.0	5.0
31313	8	87.5					7.8	8	100.0	87.5	7.8	0			
31314	60	71.7	11.7	16.7	102.7	46.4	8.9	47	78.3	70.2	8.7	13	21.7	76.9	9.5
31316	223	78.5	10.8	10.8	72.8	29.3	7.4	195	87.4	79.0	7.3	28	12.6	75.0	8.0
31353	0							0				0			
31358	3	33.3	33.3	33.3	84.0	39.0	2.0	2	66.7	50.0	3.0	1	33.3		
31359	21	71.4	4.8	23.8	256.0	57.2	8.4	16	76.2	75.0	8.1	5	23.8	60.0	9.6
31387	33	72.7	18.2	9.1	100.5	80.3	7.1	31	93.9	74.2	7.1	2	6.1	50.0	6.0
31388	11	81.8		18.2		98.0	6.8	10	90.9	90.0	7.5	1	9.1		
31419	13	53.9	7.7	38.5	221.0	72.4	5.2	6	46.2	66.7	6.3	7	53.9	42.9	4.1
31620	6	100.0					12.3	5	83.3	100.0	11.6	1	16.7	100.0	16.0
31984	0							0				0			
41638	103	43.7	12.6	42.7	101.0	67.3	4.8	50	48.5	56.0	6.4	53	51.5	32.1	3.3
41784	2	100.0					11.5	2	100.0	100.0	11.5	0			
32001	11	81.8	9.1	9.1	16.0	25.0	9.4	10	90.9	80.0	9.6	1	9.1	100.0	7.0
32003	16	75.0	18.8	6.3	145.0	140.0	8.1	16	100.0	75.0	8.1	0			
32007	7	71.4		28.6		20.5	7.3	6	85.7	83.3	8.5	1	14.3		

Rejec	S K U P A J							PRVI PRIPUST				DRUGI IN VIŠJI			
	Št. pr.	Usp. pr. (%)	Izl. po pr. (%)	Preg. (%)	DPI (dni)	DPP (dni)	P _ž /pr.	Št. pr.	Prvi (%)	Usp. (%)	P _ž /pr.	Št. pr.	≥2 (%)	Usp. (%)	P _ž /pr.
32010	83	56.6	14.5	28.9	69.6	25.9	6.0	56	67.5	46.4	5.5	27	32.5	77.8	7.2
33310	22	81.8	9.1	9.1	121.0	28.0	10.4	19	86.4	79.0	10.1	3	13.6	100.0	12.3
Sk.	2188	71.8	9.6	18.4	91.2	44.6	7.8	1755	80.2	74.5	8.0	433	19.8	60.7	6.8

Tabela 1.3: Analiza pripustov starih svinj na kmetijah

Rejec	S K U P A J							PRVI PRIPUST				DRUGI IN VIŠJI			
	Št. prip.	Usp. prip. (%)	Izl. po prip. (%)	Preg. (%)	DPI (dni)	DPP (dni)	$P_{\bar{z}}$ / prip.	Št. prip.	Prvi (%)	Usp. (%)	$P_{\bar{z}}$ / prip.	Št. prip.	≥ 2 (%)	Usp. (%)	$P_{\bar{z}}$ / prip.
30023	93	72.0	8.6	17.2	121.1	40.2	7.9	75	80.7	82.7	9.0	18	19.4	27.8	3.1
30037	106	66.0	5.7	28.3	96.3	31.5	7.2	76	71.7	76.3	8.3	30	28.3	40.0	4.5
30065	35	85.7	11.4	2.9	140.8	68.0	11.3	34	97.1	85.3	11.4	1	2.9	100.0	6.0
30077	201	69.2	10.0	20.9	92.4	29.3	8.4	157	78.1	72.6	8.8	44	21.9	56.8	6.7
30152	240	72.9	5.0	22.1	110.6	46.9	7.6	185	77.1	73.5	7.6	55	22.9	70.9	7.3
30504	192	92.2	2.1	5.7	53.8	27.3	11.8	180	93.8	92.8	11.8	12	6.3	83.3	10.9
30511	64	50.0	10.9	39.1	108.9	82.6	6.3	38	59.4	52.6	6.9	26	40.6	46.2	5.4
30745	131	40.5	6.9	52.7	66.4	34.6	4.3	65	49.6	55.4	5.9	66	50.4	25.8	2.6
40002	72	75.0	9.7	13.9	99.7	49.2	8.2	62	86.1	79.0	8.8	10	13.9	50.0	4.6
40005	125	70.4	10.4	19.2	117.5	61.5	7.6	99	79.2	72.7	7.7	26	20.8	61.5	7.3
40017	131	65.7	16.0	18.3	108.0	82.5	8.5	111	84.7	68.5	9.0	20	15.3	50.0	5.7
40164	68	70.6	10.3	19.1	83.6	62.2	7.7	58	85.3	74.1	8.0	10	14.7	50.0	6.2
40222	113	72.6	8.0	18.6	57.2	38.6	9.2	93	82.3	74.2	9.5	20	17.7	65.0	8.2
40267	130	62.3	6.9	30.8	75.7	37.5	7.1	89	68.5	69.7	7.7	41	31.5	46.3	5.9
40504	70	72.9	12.9	14.3	82.0	44.3	7.7	58	82.9	72.4	7.6	12	17.1	75.0	8.4
40545	71	81.7	9.9	8.5	82.4	33.5	9.0	62	87.3	82.3	8.9	9	12.7	77.8	9.9
40620	184	73.9	3.8	22.3	141.3	29.4	7.9	141	76.6	74.5	7.8	43	23.4	72.1	8.1
40649	56	89.3	1.8	8.9	60.0	31.8	11.2	52	92.9	90.4	11.4	4	7.1	75.0	9.3
40825	76	60.5	15.8	23.7	72.5	26.3	6.9	59	77.6	69.5	7.8	17	22.4	29.4	3.7
40895	33	81.8		18.2		62.2	10.4	27	81.8	77.8	9.9	6	18.2	100.0	13.0
31007	75	86.7	6.7	6.7	42.6	46.2	11.0	69	92.0	91.3	11.6	6	8.0	33.3	4.5
31025	57	75.4	10.5	12.3	105.3	54.1	8.4	50	87.7	78.0	8.6	7	12.3	57.1	7.1
31026	115	87.0	3.5	9.6	71.0	51.8	10.5	105	91.3	88.6	10.6	10	8.7	70.0	9.4
31059	27	55.6	14.8	29.6	139.0	113.5	6.1	19	70.4	63.2	6.5	8	29.6	37.5	5.1
31060	75	52.0	12.0	36.0	156.9	45.9	6.7	52	69.3	48.1	6.2	23	30.7	60.9	8.0
31084	54	92.6	1.9	5.6	139.0	70.0	10.7	50	92.6	94.0	10.8	4	7.4	75.0	9.0
31301	335	74.6	8.1	16.4	84.2	37.4	8.4	274	81.8	81.4	9.3	61	18.2	44.3	4.6
31304	61	80.3	8.2	11.5	95.6	42.3	7.6	53	86.9	83.0	7.9	8	13.1	62.5	6.3
31305	306	82.7	4.6	12.8	118.0	61.6	9.2	264	86.3	82.6	9.1	42	13.7	83.3	9.6
31306	23	78.3	4.4	17.4	139.0	87.0	9.5	20	87.0	80.0	10.1	3	13.0	66.7	6.0
31307	74	83.8	8.1	5.4	133.2	42.3	8.8	68	91.9	83.8	8.9	6	8.1	83.3	7.8
31309	111	74.8	9.9	12.6	86.0	29.1	9.9	98	88.3	78.6	10.4	13	11.7	46.2	5.9
31311	76	77.6	5.3	17.1	101.8	37.1	9.7	63	82.9	79.4	10.2	13	17.1	69.2	7.7
31312	118	75.4	6.8	17.0	94.1	48.0	8.9	96	81.4	76.0	9.0	22	18.6	72.7	8.6
31313	68	76.5	4.4	14.7	233.7	57.4	7.9	58	85.3	77.6	7.9	10	14.7	70.0	7.7
31314	118	75.4	5.9	17.0	103.4	46.6	8.6	97	82.2	77.3	8.8	21	17.8	66.7	7.7
31316	130	61.5	8.5	29.2	90.4	43.8	6.4	88	67.7	59.1	6.5	42	32.3	66.7	6.2
31353	71	90.1	7.0	2.8	83.8	31.0	11.3	69	97.2	91.3	11.4	2	2.8	50.0	8.5
31358	106	70.8	6.6	21.7	99.3	56.2	7.9	85	80.2	74.1	8.3	21	19.8	57.1	6.5
31359	15	86.7		13.3		22.0	10.3	13	86.7	84.6	10.6	2	13.3	100.0	8.5
31387	99	79.8	12.1	8.1	77.6	33.3	9.2	90	90.9	82.2	9.6	9	9.1	55.6	6.0
31388	63	73.0	4.8	19.1	112.0	80.3	8.2	46	73.0	76.1	8.5	17	27.0	64.7	7.1
31419	48	45.8	12.5	39.6	161.2	50.1	4.6	29	60.4	51.7	5.5	19	39.6	36.8	3.2
31620	57	73.7	12.3	14.0	202.1	64.5	9.4	49	86.0	75.5	9.4	8	14.0	62.5	8.9
31984	97	56.7	7.2	35.1	55.1	47.4	6.2	65	67.0	61.5	6.8	32	33.0	46.9	4.9
41638	248	59.7	14.1	26.2	99.6	68.2	7.0	192	77.4	67.7	8.0	56	22.6	32.1	3.7
41784	162	82.7	5.6	11.1	116.6	73.9	9.8	150	92.6	87.3	10.4	12	7.4	25.0	2.6
32001	54	48.2	9.3	42.6	172.4	45.9	5.2	34	63.0	52.9	5.7	20	37.0	40.0	4.5
32003	28	53.6	7.1	39.3	238.5	81.3	6.1	18	64.3	50.0	5.5	10	35.7	60.0	7.1
32007	24	66.7	8.3	25.0	90.0	29.3	7.3	17	70.8	76.5	8.1	7	29.2	42.9	5.4
32010	81	67.9	12.4	17.3	98.6	42.9	7.9	66	81.5	68.2	7.8	15	18.5	66.7	8.3
33310	163	77.3	4.9	17.2	70.1	36.7	9.3	136	83.4	79.4	9.6	27	16.6	66.7	8.0

Rejec	S K U P A J							PRVI PRIPUST				DRUGI IN VIŠJI			
	Št. prip.	Usp. prip. (%)	Izl. po prip. (%)	Preg. (%)	DPI (dni)	DPP (dni)	P _z /prip.	Št. prip.	Prvi (%)	Usp. (%)	P _z /prip.	Št. prip.	≥2 (%)	Usp. (%)	P _z /prip.
Sk.	5330	72.5	7.8	19.2	101.5	48.0	8.4	4304	80.8	76.7	8.9	1026	19.3	54.7	6.2

Tabela 1.4: Distribucija pregonitev na kmetijah

Rejec	MLADICE					STARE SVINJE				
	Št. preg.	DPP (dni)	do 25. dne (%)	25-40 dni (%)	po 40. dnevu (%)	Št. preg.	DPP (dni)	do 25. dne (%)	25-40 dni (%)	po 40. dnevu (%)
30023	6	45.8	33.3	33.3	33.3	16	40.2	37.5	12.5	50.0
30037	19	32.2	57.9	15.8	26.3	30	31.5	60.0	13.3	26.7
30065	0					1	68.0	0.0	0.0	100.0
30077	16	32.6	50.0	31.3	18.8	42	29.3	59.5	19.1	21.4
30152	6	63.7	16.7	0.0	83.3	53	46.9	37.7	13.2	49.1
30504	10	21.5	90.0	10.0	0.0	11	27.3	54.6	36.4	9.1
30511	3	115.0	0.0	0.0	100.0	25	82.6	24.0	4.0	72.0
30745	0					69	34.6	43.5	31.9	24.6
40002	7	26.6	42.9	57.1	0.0	10	49.2	30.0	20.0	50.0
40005	0					24	61.5	41.7	16.7	41.7
40017	10	56.3	40.0	10.0	50.0	24	82.5	12.5	16.7	70.8
40164	38	31.4	60.5	18.4	21.1	13	62.2	15.4	7.7	76.9
40222	34	41.3	26.5	17.7	55.9	21	38.6	38.1	19.1	42.9
40267	25	32.2	52.0	28.0	20.0	40	37.5	52.5	22.5	25.0
40504	4	44.8	25.0	0.0	75.0	10	44.3	50.0	10.0	40.0
40545	3	117.3	0.0	33.3	66.7	6	33.5	50.0	0.0	50.0
40620	1	23.0	100.0	0.0	0.0	41	29.4	73.2	14.6	12.2
40649	0					5	31.8	40.0	20.0	40.0
40825	13	33.5	69.2	7.7	23.1	18	26.3	72.2	16.7	11.1
40895	0					6	62.2	16.7	16.7	66.7
31007	3	56.3	0.0	0.0	100.0	5	46.2	40.0	20.0	40.0
31025	8	63.1	12.5	25.0	62.5	7	54.1	28.6	42.9	28.6
31026	0					11	51.8	36.4	27.3	36.4
31059	4	119.8	25.0	0.0	75.0	8	113.5	25.0	0.0	75.0
31060	7	47.0	42.9	14.3	42.9	27	45.9	33.3	18.5	48.2
31084	1	104.0	0.0	0.0	100.0	3	70.0	0.0	33.3	66.7
31301	19	56.1	42.1	15.8	42.1	55	37.4	47.3	18.2	34.6
31304	0					7	42.3	14.3	42.9	42.9
31305	12	57.8	8.3	50.0	41.7	39	61.6	23.1	18.0	59.0
31306	15	31.9	73.3	13.3	13.3	4	87.0	50.0	0.0	50.0
31307	1	23.0	100.0	0.0	0.0	4	42.3	25.0	25.0	50.0
31309	8	30.4	87.5	0.0	12.5	14	29.1	50.0	35.7	14.3
31311	1	79.0	0.0	0.0	100.0	13	37.1	46.2	15.4	38.5
31312	4	32.5	50.0	0.0	50.0	20	48.0	35.0	20.0	45.0
31313	0					10	57.4	40.0	0.0	60.0
31314	10	46.4	50.0	10.0	40.0	20	46.6	35.0	25.0	40.0
31316	24	29.3	70.8	20.8	8.3	38	43.8	39.5	21.1	39.5
31353	0					2	31.0	50.0	0.0	50.0
31358	1	39.0	0.0	100.0	0.0	23	56.2	26.1	17.4	56.5
31359	5	57.2	20.0	0.0	80.0	2	22.0	50.0	50.0	0.0
31387	3	80.3	0.0	0.0	100.0	8	33.3	50.0	25.0	25.0
31388	2	98.0	0.0	0.0	100.0	12	80.3	0.0	8.3	91.7
31419	5	72.4	40.0	20.0	40.0	19	50.1	36.8	15.8	47.4
31620	0					8	64.5	25.0	25.0	50.0
31984	0					34	47.4	53.0	11.8	35.3
41638	44	67.3	6.8	0.0	93.2	65	68.2	3.1	0.0	96.9
41784	0					18	73.9	0.0	5.6	94.4
32001	1	25.0	100.0	0.0	0.0	23	45.9	30.4	17.4	52.2
32003	1	140.0	0.0	0.0	100.0	11	81.3	18.2	18.2	63.6
32007	2	20.5	100.0	0.0	0.0	6	29.3	66.7	0.0	33.3
32010	24	25.9	70.8	12.5	16.7	14	42.9	42.9	14.3	42.9
33310	2	28.0	50.0	50.0	0.0	28	36.7	53.6	14.3	32.1

Rejec	MLADICE					STARE SVINJE				
	Št. preg.	DPP (dni)	do 25. dne (%)	25-40 dni (%)	po 40. dnevu (%)	Št. preg.	DPP (dni)	do 25. dne (%)	25-40 dni (%)	po 40. dnevu (%)
Sk.	402	44.6	44.3	15.9	39.8	1023	48.0	38.2	16.8	45.0

1.3 Analiza reprodukcijskega ciklusa

Tabela 1.5: Starost mladic ob pravitvi in število krmnih dni na živorojenega pujska pri mladicah na kmetijah

Rejec	Št. pras.	Starost ob		do 360 dni (%)	361-420 dni (%)	≥421 dni (%)	Izl. (%)	pred prip. (%)	po prip. (%)	Starost ob izl.	kDOP (dni)	KD/ $P_{\bar{z}}$
		1.prip. pras.	pras.									
30023	5	232.0	359.2	60.0	20.0	20.0					159.2	16.2
30037	12	214.8	351.3	66.7	25.0	8.3	11.4	66.7	33.3	322.0	160.0	15.4
30065	0											
30077	58	272.9	395.8	20.7	58.6	20.7	10.8	28.6	71.4	358.1	214.9	17.5
30152	21	266.1	387.5	33.4	47.6	19.0	22.2	33.3	66.7	395.0	243.2	27.6
30504	24	233.0	353.1	66.7	33.3	0.0					153.1	11.8
30511	11	248.8	395.7	63.6	0.0	36.4					195.7	16.0
30745	10	242.1	357.3	60.0	40.0	0.0					157.3	12.7
40002	10	248.6	366.7	50.0	40.0	10.0	19.1	47.6	52.4	267.8	167.3	14.9
40005	22	217.8	335.3	90.9	9.1	0.0	4.4		100.0	335.0	141.5	13.6
40017	44	238.3	368.3	56.8	36.4	6.8	18.2	30.0	70.0	353.1	203.1	16.4
40164	12	244.3	359.8	41.7	58.3	0.0	22.0	59.5	40.5	297.9	190.9	17.5
40222	24	240.1	385.9	37.5	41.7	20.8	27.3		100.0	343.2	239.6	20.0
40267	12	223.3	352.4	66.7	25.0	8.3	12.9	69.2	30.8	246.7	156.7	16.2
40504	11	295.6	424.6	27.2	27.3	45.5	21.4		100.0	404.7	280.4	24.7
40545	13	279.9	422.8	7.7	61.5	30.8	7.1	100.0		294.0	230.0	19.5
40620	18	228.9	345.3	77.8	22.2	0.0	18.2	100.0		284.0	163.9	16.4
40649	6	214.3	330.3	100.0	0.0	0.0					130.3	13.0
40825	18	244.8	378.7	27.8	61.1	11.1	3.9	100.0		262.0	177.0	17.7
40895	10	222.2	342.7	90.0	10.0	0.0					142.7	15.0
31007	23	252.2	373.1	21.8	73.9	4.3	8.0		100.0	363.5	187.4	16.2
31025	14	243.8	389.9	42.8	28.6	28.6	17.7		100.0	455.7	244.6	22.7
31026	13	256.5	372.7	38.4	46.2	15.4					172.7	16.4
31059	5	274.6	482.2	0.0	40.0	60.0					282.2	23.5
31060	17	214.0	342.9	82.3	11.8	5.9	27.8	50.0	50.0	342.8	193.2	17.0
31084	5	266.6	380.6	40.0	40.0	20.0					180.6	18.1
31301	66	232.0	358.9	63.6	28.8	7.6	9.6	42.9	57.1	409.3	181.1	18.2
31304	0											
31305	28	225.1	358.2	82.2	10.7	7.1	5.6		100.0	434.0	188.4	19.4
31306	8	237.9	353.3	62.5	25.0	12.5	36.4	29.2	70.8	358.6	267.7	30.6
31307	20	263.5	379.9	50.0	40.0	10.0	45.1	43.5	56.5	340.2	297.6	31.7
31309	29	222.2	344.2	89.7	6.9	3.4	15.5	82.8	17.2	221.8	155.1	12.9
31311	2	225.5	379.0	50.0	0.0	50.0					179.0	17.9
31312	24	231.4	349.4	70.9	20.8	8.3	20.0	33.3	66.7	377.0	193.7	18.3
31313	0											
31314	24	233.6	358.6	54.2	37.5	8.3	41.6	68.8	31.3	318.4	230.5	20.1
31316	21	214.6	337.8	81.0	9.5	9.5	17.5	38.1	61.9	280.9	152.1	16.4
31353	15	218.7	336.6	86.7	13.3	0.0	5.9	100.0		287.0	142.4	14.9
31358	21	243.4	358.3	66.6	28.6	4.8					158.3	16.0
31359	15	269.3	399.1	0.0	86.7	13.3	6.3		100.0	572.0	223.9	19.0
31387	24	239.1	357.3	62.5	33.3	4.2	51.0	68.0	32.0	270.1	230.3	23.1
31388	0											
31419	2	224.0	375.0	50.0	50.0	0.0	33.3		100.0	738.0	444.0	31.7
31620	11	227.9	344.9	81.8	18.2	0.0					144.9	12.1
31984	16	212.3	332.8	87.5	12.5	0.0					132.8	14.1
41638	52	297.3	442.0	7.7	38.5	53.8	9.0	16.7	83.3	503.0	276.9	24.1
41784	50	221.1	339.1	94.0	6.0	0.0	2.0		100.0	345.0	142.0	14.5
32001	9	218.1	337.0	88.9	0.0	11.1	18.2	50.0	50.0	289.5	156.9	13.7
32003	6	273.7	390.3	33.3	50.0	16.7	22.2		100.0	478.8	271.9	25.1
32007	4	206.5	321.3	100.0	0.0	0.0					121.3	11.0
32010	24	227.8	359.6	54.1	41.7	4.2	32.4	41.7	58.3	289.9	196.9	17.8

Rejec	Št. pras.	Starost ob		do 360 dni (%)	361-420 dni (%)	≥421 dni (%)	Izl. (%)	pred prip. (%)	po	Starost ob izl.	kDOP (dni)	KD/ $P_{\bar{z}}$
		1.prip.	pras.									
33310	18	294.3	414.9	5.5	66.7	27.8	10.0		100.0	489.0	247.0	19.3
Sk.	907	243.0	369.2	55.1	32.4	12.5	17.7	49.5	50.5	312.0	184.4	17.0

Tabela 1.6: Doba med prasiatvama in število krmnih dni na pujska na kmetijah

Rejec	Št. pras.	DMP (dni)	do 160 dni (%)	161-200 dni (%)	≥201 dni (%)	Izl. (%)	DI (dni)	kDMP (dni)	G_L	P_Z / leto	KD/ P_Z
30023	68	175.5	44.1	39.7	16.2	20.5	163.8	221.3	1.65	18.1	20.2
30037	69	171.2	39.1	53.6	7.2	14.8	177.3	202.0	1.81	19.4	18.8
30065	29	167.7	27.6	62.1	10.3	25.6	129.6	212.4	1.72	22.6	16.2
30077	137	160.9	72.3	24.1	3.6	22.2	112.2	192.8	1.89	22.7	16.1
30152	170	161.0	75.3	15.9	8.8	10.9	121.9	176.1	2.07	21.5	16.9
30504	170	156.1	87.6	12.4	0.0	10.1	55.4	162.3	2.25	28.8	12.7
30511	30	212.1	26.7	36.7	36.7	22.7	149.4	261.9	1.39	17.4	20.9
30745	61	178.4	52.5	24.6	23.0	13.9	172.4	206.7	1.77	18.7	19.6
40002	57	165.3	54.4	40.4	5.3	18.3	105.8	191.9	1.90	21.3	17.1
40005	82	173.9	51.2	37.8	11.0	17.0	134.4	201.8	1.81	19.5	18.7
40017	83	164.6	66.3	24.1	9.6	24.8	141.0	213.8	1.71	22.1	16.6
40164	48	166.2	79.2	6.3	14.6	22.6	108.6	197.9	1.84	20.5	17.8
40222	82	157.5	82.9	17.1	0.0	13.5	107.8	176.3	2.07	26.5	13.8
40267	78	165.7	70.5	15.4	14.1	17.9	98.5	187.2	1.95	22.3	16.4
40504	49	175.7	24.5	65.3	10.2	29.0	106.0	218.9	1.67	17.7	20.7
40545	53	184.2	28.3	47.2	24.5	21.4	112.9	216.2	1.69	18.4	19.9
40620	131	162.2	71.0	22.9	6.1	12.7	140.4	182.5	2.00	21.9	16.7
40649	48	153.4	89.6	8.3	2.1	11.1	43.0	158.8	2.30	28.9	12.6
40825	45	172.4	28.9	62.2	8.9	30.8	119.9	225.7	1.62	18.4	19.9
40895	21	173.6	71.4	4.8	23.8			173.6	2.10	26.6	13.7
31007	66	156.5	83.3	16.7	0.0	22.4	57.7	173.1	2.11	26.7	13.7
31025	41	165.6	78.0	14.6	7.3	16.3	91.1	183.4	1.99	22.8	16.0
31026	97	164.6	64.9	29.9	5.2	15.7	66.4	176.9	2.06	25.1	14.5
31059	15	184.2	40.0	40.0	20.0	26.1	170.7	252.5	1.45	16.0	23.0
31060	45	179.7	40.0	37.8	22.2	23.7	165.2	231.1	1.58	20.0	18.2
31084	48	159.4	81.3	14.6	4.2	14.3	142.1	183.1	1.99	22.8	16.0
31301	243	154.7	81.1	13.6	5.3	18.5	92.4	177.3	2.06	23.3	15.7
31304	50	159.9	82.0	12.0	6.0	13.8	125.6	180.0	2.03	19.1	19.1
31305	263	159.0	80.6	12.2	7.2	8.4	120.5	170.0	2.15	23.7	15.4
31306	17	163.1	58.8	35.3	5.9	21.7	103.0	193.4	1.89	23.5	15.6
31307	67	157.2	77.6	20.9	1.5	18.1	111.9	184.4	1.98	21.0	17.4
31309	81	158.4	76.5	22.2	1.2	26.3	74.5	190.3	1.92	25.4	14.4
31311	60	162.2	80.0	15.0	5.0	10.5	110.9	175.1	2.08	25.6	14.3
31312	88	166.7	75.0	14.8	10.2	15.4	128.8	190.1	1.92	22.6	16.1
31313	52	186.5	26.9	51.9	21.2	12.5	209.0	218.6	1.67	16.8	21.7
31314	81	166.5	65.4	28.4	6.2	19.4	114.9	198.2	1.84	21.0	17.4
31316	76	165.0	69.7	23.7	6.6	17.9	141.9	200.4	1.82	19.9	18.3
31353	64	157.4	81.3	15.6	3.1	18.0	69.3	172.6	2.12	26.2	13.9
31358	69	160.6	79.7	7.2	13.0	11.1	149.1	181.9	2.01	22.5	16.3
31359	13	154.6	84.6	15.4	0.0	7.1	4.0	154.9	2.36	28.1	13.0
31387	83	170.1	9.6	84.3	6.0	24.6	87.9	198.7	1.84	21.3	17.1
31388	40	176.6	65.0	20.0	15.0	8.7	132.3	189.8	1.92	22.0	16.5
31419	23	192.3	47.8	13.0	39.1	27.3	179.8	262.6	1.39	13.8	26.4
31620	43	159.4	86.0	9.3	4.7	27.1	166.2	221.3	1.65	21.0	17.4
31984	54	169.3	64.8	24.1	11.1	21.6	95.0	200.5	1.82	19.2	19.0
41638	140	164.0	82.9	1.4	15.7	20.5	183.4	211.2	1.73	20.6	17.7
41784	121	152.3	90.9	6.6	2.5	9.5	151.9	168.6	2.16	25.4	14.4
32001	27	189.2	44.4	22.2	33.3	22.2	188.1	245.0	1.49	15.4	23.7
32003	13	199.0	23.1	53.8	23.1	17.7	159.3	235.8	1.55	17.8	20.6
32007	16	173.3	25.0	68.8	6.3	27.3	119.2	217.9	1.67	18.2	20.0
32010	54	157.9	77.8	16.7	5.6	29.5	104.1	204.5	1.78	20.5	17.8
33310	128	162.6	69.5	23.4	7.0	16.2	80.2	178.9	2.04	24.6	14.8
Sk.	3789	164.3	68.4	23.1	8.5	17.4	118.3	190.2	1.92	22.2	16.5

Tabela 1.7: Velikost gnezda ob rojstvu, gospodarnost priraje pujskov in delež letne obnove črede svinj na kmetijah

Rejec	Št. pras.	Št. izl.	$P_Z/$ gn.	KD/ gn.	G_L	KD/ P_Z	Št. svinj v čredi	Remont (%)	G_S
30023	73	18	10.88	217.0	1.68	20.0	43	41.5	
30037	81	24	10.69	177.9	2.05	16.6	79	30.4	
30065	29	10	13.14	212.4	1.72	16.2	17	59.2	
30077	195	46	12.08	199.4	1.83	16.5	107	43.2	
30152	191	27	10.22	183.5	1.99	18.0	96	28.1	
30504	194	19	12.84	161.2	2.26	12.6	86	22.2	
30511	41	10	12.46	244.1	1.50	19.6	27	36.5	
30745	71	10	10.80	199.7	1.83	18.5	39	25.7	
40002	67	34	11.21	176.9	2.06	15.8	71	48.0	
40005	104	18	10.70	189.0	1.93	17.7	54	33.4	
40017	127	39	12.72	210.1	1.74	16.5	73	53.3	
40164	60	56	11.08	192.6	1.90	17.4	102	54.7	
40222	106	22	12.61	190.6	1.91	15.1	55	39.7	
40267	90	43	11.20	166.1	2.20	14.8	116	37.2	
40504	60	23	10.73	230.2	1.59	21.4	38	60.8	
40545	66	16	11.05	218.9	1.67	19.8	40	40.4	
40620	149	23	10.83	180.3	2.02	16.7	74	31.3	
40649	54	6	12.28	155.6	2.35	12.7	23	26.1	
40825	63	21	10.97	208.3	1.75	19.0	40	52.6	
40895	31	0	11.65	163.6	2.23	14.1	14	0.0	
31007	89	21	12.38	176.8	2.06	14.3	43	48.7	
31025	55	11	11.29	199.0	1.83	17.6	30	36.7	
31026	110	18	12.00	176.4	2.07	14.7	53	33.9	
31059	20	6	11.25	259.9	1.40	23.1	14	42.1	
31060	62	24	12.31	217.2	1.68	17.7	42	56.8	
31084	53	8	11.34	182.8	2.00	16.1	27	30.1	
31301	309	63	11.01	178.1	2.05	16.2	151	41.8	
31304	50	8	9.42	180.0	2.03	19.1	25	32.4	
31305	291	26	10.91	172.1	2.12	15.8	140	18.6	
31306	25	29	11.24	246.3	1.48	21.9	40	72.8	
31307	87	38	10.33	217.8	1.68	21.1	57	67.0	
31309	110	59	12.90	167.0	2.19	13.0	109	54.0	
31311	62	7	12.21	175.3	2.08	14.4	30	23.5	
31312	112	22	11.53	190.8	1.91	16.6	59	37.6	
31313	52	8	10.08	218.6	1.67	21.7	31	25.7	
31314	105	52	11.44	209.7	1.74	18.3	72	71.8	
31316	97	59	10.59	165.5	2.21	15.6	124	47.5	
31353	79	15	11.84	166.8	2.19	14.1	36	41.5	
31358	90	9	10.89	176.4	2.07	16.2	44	20.7	
31359	28	2	11.86	191.9	1.90	16.2	15	13.6	
31387	107	52	11.22	205.8	1.77	18.3	60	86.2	
31388	40	4	11.48	189.8	1.92	16.5	21	19.2	
31419	25	10	10.28	277.1	1.32	27.0	19	52.7	
31620	54	16	12.56	205.7	1.77	16.4	30	52.6	
31984	70	16	10.29	185.0	1.97	18.0	35	45.1	
41638	192	42	11.81	229.0	1.59	19.4	120	34.9	
41784	171	14	11.18	160.8	2.27	14.4	75	18.6	
32001	36	10	10.61	222.9	1.64	21.0	22	45.5	
32003	19	7	11.26	253.8	1.44	22.5	18	38.7	
32007	20	6	10.90	198.6	1.84	18.2	11	55.1	
32010	78	47	11.37	200.8	1.82	17.7	57	82.1	
33310	146	27	12.14	187.3	1.95	15.4	75	36.0	
Sk.	4696	1201	11.41	188.4	1.94	16.5	2879	41.7	

Tabela 1.8: Dolžina laktacije in starostna struktura na kmetijah

Rejec	DOLŽINA LAKTACIJE							P R A S I T V E		
	Lakt. (dni)	do 14 dni (%)	15-19 dni (%)	20-24 dni (%)	25-29 dni (%)	30-34 dni (%)	≥35 dni (%)	prva (%)	2.-7. (%)	≥8 (%)
30023	35.9	3.4	1.1	0.0	5.7	42.0	47.7	5.4	78.5	16.1
30037	38.9	0.0	0.0	0.0	3.7	21.0	75.3	56.5	31.7	11.8
30065	31.4	0.0	0.0	0.0	7.7	89.7	2.6	0.0	94.9	5.1
30077	29.8	5.7	0.0	1.7	27.8	63.6	1.1	27.0	55.6	17.4
30152	27.0	1.6	0.0	12.0	65.6	18.8	2.1	12.3	58.5	29.2
30504	32.0	0.0	0.0	3.2	22.2	55.0	19.6	11.3	75.1	13.6
30511	32.3	4.5	0.0	0.0	2.3	56.8	36.4	21.4	62.5	16.1
30745	31.2	5.6	0.0	2.8	12.5	59.7	19.4	12.2	43.9	43.9
40002	33.8	1.4	0.0	0.0	14.1	38.0	46.5	60.8	32.6	6.6
40005	34.0	6.0	4.0	4.0	13.0	24.0	49.0	18.7	55.3	26.0
40017	33.0	5.1	1.7	3.4	22.2	34.2	33.3	32.0	56.4	11.6
40164	32.9	1.6	1.6	3.2	14.5	41.9	37.1	75.5	16.2	8.3
40222	33.1	3.1	0.0	2.1	16.7	42.7	35.4	25.6	64.3	10.1
40267	30.1	5.3	1.1	7.4	28.4	41.1	16.8	68.0	25.6	6.4
40504	41.8	0.0	1.4	1.4	2.9	11.6	82.6	16.9	48.2	34.9
40545	33.2	1.4	0.0	0.0	5.7	68.6	24.3	16.7	61.9	21.4
40620	31.4	2.0	0.7	5.3	25.3	44.7	22.0	12.8	75.0	12.2
40649	28.6	1.9	0.0	11.1	53.7	27.8	5.6	10.0	76.7	13.3
40825	38.9	4.6	0.0	1.5	0.0	21.5	72.3	28.6	61.5	9.9
40895	29.3	0.0	0.0	0.0	71.4	19.0	9.5	36.4	63.6	0.0
31007	35.2	1.2	0.0	1.2	3.5	36.5	57.6	22.7	71.8	5.5
31025	33.0	2.0	0.0	0.0	12.2	51.0	34.7	25.8	57.5	16.7
31026	34.3	0.9	0.0	0.9	11.3	39.1	47.8	10.2	78.1	11.7
31059	38.7	4.3	0.0	0.0	0.0	13.0	82.6	28.1	50.0	21.9
31060	31.0	5.1	0.0	1.7	25.4	59.3	8.5	37.9	53.7	8.4
31084	30.8	0.0	0.0	1.8	3.6	92.9	1.8	8.2	63.9	27.9
31301	24.3	8.9	2.3	45.0	36.8	6.6	0.3	19.5	68.0	12.5
31304	31.3	0.0	0.0	1.7	15.5	72.4	10.3	0.0	62.1	37.9
31305	25.7	0.0	1.0	39.0	50.5	4.5	4.9	11.1	70.3	18.6
31306	37.1	4.3	0.0	0.0	0.0	0.0	95.7	74.2	23.6	2.2
31307	35.6	4.8	0.0	0.0	10.8	27.7	56.6	38.1	47.7	14.2
31309	33.0	0.0	0.0	0.9	14.0	57.0	28.1	62.1	35.9	2.0
31311	33.2	3.0	0.0	4.5	16.4	38.8	37.3	2.9	71.0	26.1
31312	31.7	1.0	0.0	0.0	16.3	74.0	8.7	22.4	65.7	11.9
31313	41.4	4.7	0.0	0.0	3.1	17.2	75.0	0.0	79.7	20.3
31314	34.5	1.9	0.0	1.9	9.7	38.8	47.6	42.8	47.8	9.4
31316	30.5	4.2	0.0	0.0	25.3	54.7	15.8	71.6	24.2	4.2
31353	30.0	1.3	0.0	10.3	32.1	48.7	7.7	17.9	72.6	9.5
31358	25.4	2.5	2.5	12.3	75.3	7.4	0.0	20.6	69.6	9.8
31359	31.3	7.1	0.0	0.0	7.1	85.7	0.0	53.3	46.7	0.0
31387	42.3	1.8	0.0	0.9	0.0	3.6	93.6	30.8	64.2	5.0
31388	33.6	0.0	0.0	4.3	6.5	54.3	34.8	0.0	76.1	23.9
31419	31.6	0.0	0.0	15.2	24.2	33.3	27.3	8.3	77.8	13.9
31620	30.6	0.0	0.0	0.0	3.4	96.6	0.0	15.7	61.4	22.9
31984	28.4	6.8	1.4	5.4	45.9	31.1	9.5	17.8	74.4	7.8
41638	26.6	0.0	0.0	6.8	89.8	3.4	0.0	27.6	48.5	23.9
41784	29.4	1.5	0.7	14.6	33.6	36.5	13.1	27.1	72.9	0.0
32001	29.3	8.3	0.0	2.8	16.7	69.4	2.8	23.4	63.8	12.8
32003	30.9	0.0	0.0	0.0	17.6	82.4	0.0	51.4	45.7	2.9
32007	42.8	4.5	0.0	0.0	0.0	0.0	95.5	15.4	65.4	19.2
32010	27.3	3.8	1.3	5.1	82.1	7.7	0.0	48.7	49.3	2.0
33310	31.1	2.6	1.9	2.6	17.5	55.2	20.1	11.5	72.4	16.1

Rejec	DOLŽINA LAKTACIJE							P R A S I T V E		
	Lakt. (dni)	do 14 dni (%)	15-19 dni (%)	20-24 dni (%)	25-29 dni (%)	30-34 dni (%)	≥35 dni (%)	prva (%)	2.-7. (%)	≥8 (%)
Sk.	31.2	2.7	0.6	8.6	27.0	36.2	24.8	32.1	55.0	12.9

Tabela 1.9: Interim obdobje na kmetijah

Rejec	PRVESNICE				STARE SVINJE			
	IO (dni)	do 12 dni (%)	12-40 dni (%)	≥41 dni (%)	IO (dni)	do 12 dni (%)	12-40 dni (%)	≥41 dni (%)
30023	39.2	30.0	40.0	30.0	13.3	78.1	13.7	8.2
30037	11.4	66.7	28.6	4.8	12.2	80.0	12.9	7.1
30065	38.7	0.0	33.3	66.7	17.4	12.5	81.3	6.3
30077	12.9	70.9	25.5	3.6	7.1	87.7	11.0	1.4
30152	7.8	73.3	26.7	0.0	8.1	91.6	5.8	2.7
30504	10.0	85.0	15.0	0.0	5.8	95.3	4.7	0.0
30511	26.7	70.6	5.9	23.5	30.7	48.9	27.7	23.4
30745	19.3	66.7	16.7	16.7	11.8	77.3	17.6	5.0
40002	8.4	90.0	10.0	0.0	6.1	91.9	6.5	1.6
40005	18.8	61.9	9.5	28.6	9.1	85.6	12.5	1.9
40017	9.8	90.0	7.5	2.5	5.9	98.9	1.1	0.0
40164	12.8	81.3	12.5	6.3	6.5	94.2	3.8	1.9
40222	8.8	83.3	16.7	0.0	5.7	96.6	3.4	0.0
40267	7.4	84.6	15.4	0.0	5.9	99.0	1.0	0.0
40504	15.7	81.8	9.1	9.1	15.0	74.6	10.2	15.3
40545	71.8	0.0	38.5	61.5	29.2	31.0	43.1	25.9
40620	7.3	86.4	13.6	0.0	6.6	91.4	8.0	0.6
40649	5.9	100.0	0.0	0.0	5.8	98.0	2.0	0.0
40825	23.3	63.2	21.1	15.8	11.8	73.7	22.8	3.5
40895	-2.8	100.0	0.0	0.0	10.5	81.3	12.5	6.3
31007	5.1	100.0	0.0	0.0	5.5	98.1	1.9	0.0
31025	20.9	81.3	6.3	12.5	15.5	75.6	17.1	7.3
31026	13.5	75.0	15.0	10.0	8.3	83.2	15.8	1.1
31059	80.6	20.0	20.0	60.0	7.1	100.0	0.0	0.0
31060	10.2	78.1	21.9	0.0	11.8	67.4	32.6	0.0
31084	24.6	37.5	37.5	25.0	8.1	91.3	6.5	2.2
31301	22.4	63.6	12.7	23.6	10.8	81.4	13.9	4.6
31304	23.1	50.0	25.0	25.0	6.8	95.9	0.0	4.1
31305	7.6	87.8	12.2	0.0	8.0	93.8	4.7	1.6
31306	44.6	28.6	14.3	57.1	10.1	75.0	25.0	0.0
31307	5.1	100.0	0.0	0.0	7.5	93.5	4.8	1.6
31309	8.2	85.7	14.3	0.0	6.4	97.4	2.6	0.0
31311	7.6	80.0	20.0	0.0	7.2	98.6	0.0	1.4
31312	12.2	75.9	17.2	6.9	9.6	94.4	0.0	5.6
31313					26.3	63.2	17.6	19.1
31314	15.8	71.4	23.8	4.8	7.4	91.8	6.2	2.1
31316	7.6	84.8	15.2	0.0	6.4	94.8	5.2	0.0
31353	20.4	75.0	6.3	18.8	10.8	76.4	21.8	1.8
31358	15.4	77.3	9.1	13.6	13.5	79.8	9.5	10.7
31359	5.2	100.0	0.0	0.0				
31387	15.4	63.0	25.9	11.1	9.1	80.6	18.1	1.4
31388	5.9	100.0	0.0	0.0	8.1	88.7	9.4	1.9
31419	13.8	83.3	0.0	16.7	17.2	50.0	35.7	14.3
31620	8.2	92.3	0.0	7.7	5.8	100.0	0.0	0.0
31984	13.8	90.0	5.0	5.0	8.4	87.0	11.7	1.3
41638	6.9	96.1	0.0	3.9	10.2	92.4	2.0	5.6
41784	5.6	100.0	0.0	0.0	5.2	100.0	0.0	0.0
32001	41.7	33.3	16.7	50.0	16.5	60.4	35.4	4.2
32003	120.8	30.0	10.0	60.0	42.2	22.2	50.0	27.8
32007	4.8	100.0	0.0	0.0	11.3	63.2	36.8	0.0
32010	10.0	80.6	19.4	0.0	5.9	94.0	6.0	0.0
33310	11.4	80.0	13.3	6.7	9.5	85.0	12.0	3.0

Rejec	P R V E S N I C E				S T A R E S V I N J E			
	IO (dni)	do 12 dni (%)	12-40 dni (%)	≥41 dni (%)	IO (dni)	do 12 dni (%)	12-40 dni (%)	≥41 dni (%)
Sk.	14.4	78.3	13.1	8.6	9.8	85.8	10.5	3.7

Tabela 1.10: Poodstavitveni premor na kmetijah

Rejec	PRVESNICE					STARE SVINJE				
	Št. svinj	PP (dni)	do 12 dni (%)	13-60 dni (%)	≥61 dni (%)	Št. svinj	PP (dni)	do 12 dni (%)	13-60 dni (%)	≥61 dni (%)
30023	20	71.5	15.0	35.0	50.0	73	27.4	65.7	19.2	15.1
30037	21	24.2	57.2	33.3	9.5	85	24.4	60.0	30.6	9.4
30065	3	38.7	0.0	100.0	0.0	32	19.5	12.5	84.4	3.1
30077	55	17.5	56.4	41.8	1.8	146	18.2	68.5	24.0	7.5
30152	15	18.0	53.3	46.7	0.0	225	21.2	72.0	17.8	10.2
30504	20	11.4	80.0	20.0	0.0	172	8.2	89.5	9.3	1.2
30511	17	133.6	29.5	17.6	52.9	47	77.6	34.0	23.4	42.6
30745	12	25.8	41.7	50.0	8.3	119	75.1	37.8	29.4	32.8
40002	10	12.5	80.0	20.0	0.0	62	15.5	79.0	14.5	6.5
40005	21	41.3	47.6	28.6	23.8	104	21.3	70.2	20.2	9.6
40017	40	21.4	75.0	15.0	10.0	91	19.7	83.5	7.7	8.8
40164	16	28.2	62.5	12.5	25.0	52	17.1	80.8	9.6	9.6
40222	24	22.5	75.0	12.5	12.5	89	11.8	80.9	15.7	3.4
40267	26	25.1	61.5	30.8	7.7	104	23.3	67.3	21.2	11.5
40504	11	23.0	72.7	9.1	18.2	59	34.2	64.4	20.3	15.3
40545	13	84.2	0.0	46.2	53.8	58	34.2	27.6	56.9	15.5
40620	22	8.2	81.8	18.2	0.0	162	16.4	67.9	26.5	5.6
40649	7	5.9	100.0	0.0	0.0	49	9.1	89.8	8.2	2.0
40825	19	45.6	36.8	31.6	31.6	57	19.2	57.9	35.1	7.0
40895	17	11.1	94.1	5.9	0.0	16	17.2	75.0	12.5	12.5
31007	23	8.0	91.3	8.7	0.0	52	9.7	90.4	5.8	3.8
31025	16	30.2	68.7	12.5	18.8	41	21.8	73.1	17.1	9.8
31026	20	16.1	65.0	35.0	0.0	95	12.5	77.9	18.9	3.2
31059	5	116.8	20.0	20.0	60.0	22	41.7	72.8	4.5	22.7
31060	32	28.1	50.0	34.4	15.6	43	32.1	44.2	39.5	16.3
31084	8	32.9	37.5	50.0	12.5	46	12.5	84.8	13.0	2.2
31301	55	37.7	50.9	27.3	21.8	280	22.9	68.9	20.7	10.4
31304	12	50.3	25.0	33.3	41.7	49	9.0	89.8	10.2	0.0
31305	49	17.5	71.5	16.3	12.2	257	17.0	82.9	10.5	6.6
31306	7	47.9	28.5	42.9	28.6	16	14.4	68.8	31.3	0.0
31307	12	5.1	100.0	0.0	0.0	62	11.1	87.1	8.1	4.8
31309	35	14.6	68.5	28.6	2.9	76	9.1	89.5	9.2	1.3
31311	5	13.4	60.0	40.0	0.0	71	15.6	81.7	12.7	5.6
31312	29	25.0	58.6	34.5	6.9	89	19.6	79.7	7.9	12.4
31313	0					68	38.3	57.4	23.5	19.1
31314	21	28.6	66.7	14.3	19.0	97	16.7	75.3	17.5	7.2
31316	33	25.2	54.5	36.4	9.1	97	26.0	65.0	20.6	14.4
31353	16	21.6	74.9	6.3	18.8	55	11.6	76.4	21.8	1.8
31358	22	25.5	63.7	22.7	13.6	84	28.9	69.0	14.3	16.7
31359	15	8.1	86.7	13.3	0.0	0				
31387	27	23.6	59.3	37.0	3.7	72	11.9	73.6	25.0	1.4
31388	10	13.8	80.0	10.0	10.0	53	36.8	64.1	18.9	17.0
31419	6	83.2	33.3	16.7	50.0	42	35.7	33.4	45.2	21.4
31620	13	12.4	76.9	23.1	0.0	44	16.3	86.4	9.1	4.5
31984	20	35.9	60.0	20.0	20.0	77	27.2	61.0	26.0	13.0
41638	51	23.8	80.4	0.0	19.6	197	34.0	72.1	1.5	26.4
41784	84	12.8	90.4	3.6	6.0	78	7.6	94.9	3.8	1.3
32001	6	46.3	33.4	33.3	33.3	48	40.6	35.4	43.8	20.8
32003	10	144.2	20.0	20.0	60.0	18	74.0	11.1	55.6	33.3
32007	5	6.6	80.0	20.0	0.0	19	41.5	52.6	21.1	26.3
32010	31	20.0	58.1	38.7	3.2	50	13.4	80.0	14.0	6.0
33310	30	21.1	56.6	36.7	6.7	133	16.9	71.4	22.6	6.0

Rejec	P R V E S N I C E					S T A R E S V I N J E				
	Št. svinj	PP (dni)	do 12 dni (%)	13-60 dni (%)	≥61 dni (%)	Št. svinj	PP (dni)	do 12 dni (%)	13-60 dni (%)	≥61 dni (%)
Sk.	1097	27.6	63.5	23.4	13.1	4233	22.7	70.7	18.8	10.5

1.4 Analiza izločitev

Tabela 1.11: Izločitve svinj na kmetijah

Rejec	MLADICE							STARE SVINJE					
	Št. izl.	DOI (dni)	Izločitve		Vzrok izločitve			Št. izl.	DI (dni)	Izločitve		Vzrok izločitve	
			pred	po pr.	8	9	10			pred	po pr.	9	10
30023	4	348.3	25.0	75.0	25.0	25.0	50.0	21	152.7	61.9	38.1	14.3	9.5
30037	9	113.4	44.4	55.6	22.2		22.2	14	158.1	50.0	50.0		28.6
30065	0							14	128.4	64.3	35.7	28.6	
30077	12	126.6	50.0	50.0	25.0	33.3	16.7	49	106.2	51.0	49.0	16.3	26.5
30152	5	180.4	40.0	60.0	40.0	20.0	40.0	18	150.9	38.9	61.1	22.2	16.7
30504	1	124.0	0.0	100.0		100.0		25	59.8	80.0	20.0	8.0	
30511	0							6	166.8	16.7	83.3	50.0	33.3
30745	1		0.0	100.0		100.0		12	225.5	25.0	75.0		58.3
40002	15	68.5	80.0	20.0	26.7	6.7	6.7	13	104.8	46.2	53.8	15.4	7.7
40005	1	135.0	0.0	100.0				17	159.8	23.5	76.5	29.4	5.9
40017	13	192.6	30.8	69.2	23.1	46.2	23.1	32	154.6	34.4	65.6	43.8	6.3
40164	44	100.1	63.6	36.4	45.5	22.7	13.6	12	118.8	33.3	66.7	41.7	25.0
40222	10	141.5	0.0	100.0		10.0	60.0	18	108.7	33.3	66.7	27.8	22.2
40267	16	46.6	50.0	50.0	18.8	31.3	18.8	17	98.8	52.9	47.1	11.8	23.5
40504	3	204.7	0.0	100.0		66.7	33.3	23	130.9	65.2	34.8	30.4	4.3
40545	1	94.0	100.0	0.0	100.0			14	105.9	57.1	42.9	28.6	14.3
40620	1	99.0	100.0	0.0	100.0			22	134.8	77.3	22.7	9.1	9.1
40649	0							2	38.0	100.0	0.0		
40825	15	34.6	100.0	0.0	93.3			18	108.3	33.3	66.7	33.3	22.2
31007	2	163.5	0.0	100.0		50.0	50.0	8	36.6	100.0	0.0		
31025	0							9	135.4	44.4	55.6	33.3	
31026	0							13	71.2	84.6	15.4	7.7	
31059	0							9	176.1	55.6	44.4		22.2
31060	9	176.4	44.4	55.6	44.4	44.4	11.1	11	150.8	36.4	63.6	45.5	9.1
31084	0							7	143.6	85.7	14.3	14.3	
31301	9	161.1	55.6	44.4	55.6	11.1	33.3	57	109.1	49.1	50.9	1.8	15.8
31304	1		0.0	100.0		100.0		11	115.6	63.6	36.4	9.1	
31305	2	234.0	0.0	100.0		50.0		20	114.3	40.0	60.0	15.0	10.0
31306	29	141.6	34.5	65.5	27.6	55.2	3.4	6	102.2	83.3	16.7		16.7
31307	29	88.5	58.6	41.4	10.3	37.9		21	124.6	71.4	28.6	4.8	
31309	43	14.4	83.7	16.3	16.3	9.3	2.3	32	79.3	59.4	40.6	9.4	3.1
31311	0							10	122.3	40.0	60.0	30.0	20.0
31312	10	162.8	30.0	70.0	30.0	50.0	10.0	19	125.6	52.6	47.4	21.1	5.3
31313	0							7	231.6	57.1	42.9		14.3
31314	24	112.0	70.8	29.2	66.7	29.2		26	103.7	61.5	38.5	11.5	7.7
31316	29	93.3	24.1	75.9	17.2	65.5	3.4	22	121.4	36.4	63.6	18.2	18.2
31353	0							15	78.5	66.7	33.3	6.7	6.7
31358	1		0.0	100.0			100.0	9	116.3	33.3	66.7	22.2	22.2
31359	1	372.0	0.0	100.0			100.0	3	52.3	100.0	0.0		
31387	25	53.4	80.0	20.0	12.0	4.0		29	94.0	55.2	44.8	6.9	13.8
31388	0							6	213.0	33.3	66.7	16.7	50.0
31419	1	538.0	0.0	100.0			100.0	9	196.4	33.3	66.7	33.3	11.1
31620	0							10	207.6	40.0	60.0	20.0	20.0
31984	0							14	110.6	35.7	64.3	21.4	21.4
41638	11	386.0	9.1	90.9	9.1	54.5	36.4	41	181.4	19.5	80.5	36.6	36.6
41784	0							11	183.9	9.1	90.9	18.2	54.5
32001	2	89.5	50.0	50.0				9	207.2	22.2	77.8	55.6	
32003	5	234.0	20.0	80.0		20.0	20.0	3	429.7	33.3	66.7		66.7
32007	0							5	153.0	60.0	40.0	20.0	
32010	18	93.9	38.9	61.1	16.7	50.0	5.6	20	126.9	35.0	65.0	25.0	5.0

Rejec	MLADICE							STARE SVINJE					
	Št. izl.	DOI (dni)	Izločitve		Vzrok izločitve			Št. izl.	DI (dni)	Izločitve		Vzrok izločitve	
			pred	po pr.	8	9	10			pred	po pr.	9	10
33310	2	289.0	0.0	100.0		100.0		19	83.1	57.9	42.1	10.5	10.5
Sk.	404	111.3	52.2	47.8	27.7	30.2	11.4	838	126.5	49.4	50.6	18.3	14.7

Poglavje 2

Kmetije skupaj po letih

2.1 Velikost gnezda

Tabela 2.1: Velikost gnezda po letih na kmetijah

Leto	MLADICE			STARE SVINJE						SKUPAJ		
	Št. pras.	DOP (dni)	$P_{\bar{z}}$ /gn.	Št. pras.	DMP (dni)	Lakt. (dni)	IO (dni)	PP (dni)	$P_{\bar{z}}$ /gn.	Št. pras.	P_O /gn.	Izgube (%)
1984	87	188.8	9.21	535	162.0	30.7	12.9	17.5	10.08	622	8.55	14.1
1985	66	152.2	8.98	595	160.8	30.5	11.0	14.9	10.12	661	8.52	14.9
1986	176	175.1	9.00	653	162.4	29.5	14.9	18.3	9.83	829	8.42	12.8
1987	146	174.1	8.44	682	164.1	30.4	15.5	19.2	9.97	828	8.14	16.0
1988	184	152.8	8.77	555	162.6	32.1	11.4	16.0	10.30	739	8.34	15.9
1989	182	164.7	8.66	630	164.2	31.9	14.2	17.3	10.33	812	8.69	12.7
1990	167	166.7	9.05	792	169.2	34.7	15.4	18.9	10.15	959	8.69	12.8
1991	170	167.2	8.89	739	169.2	35.5	15.1	18.8	10.23	909	8.67	13.1
1992	157	175.2	8.83	768	170.4	36.0	14.8	18.7	10.11	925	8.72	11.8
1993	254	178.5	8.88	685	173.6	36.7	16.4	21.8	10.26	939	8.87	10.3
1994	349	168.9	9.01	1023	171.7	35.5	15.0	21.0	10.39	1372	8.91	11.2
1995	608	167.5	8.84	2038	169.4	35.5	14.2	18.6	10.56	2646	8.99	11.6
1996	588	163.7	9.01	1801	169.2	35.1	12.7	18.9	10.51	2389	9.03	10.9
1997	545	164.3	9.01	2220	170.6	34.7	14.1	20.7	10.41	2765	9.11	10.1
1998	932	156.0	9.20	2650	168.6	34.6	12.0	18.9	10.49	3582	9.06	10.7
1999	779	169.9	9.11	2913	169.3	33.8	12.5	20.3	10.41	3692	9.11	10.1
2000	747	161.7	9.12	2994	168.4	32.7	12.3	20.3	10.46	3741	9.24	9.4
2001	891	165.1	8.88	2895	166.9	31.7	12.0	19.9	10.28	3786	8.92	10.4
2002	920	165.5	9.08	3191	166.3	31.4	11.8	19.6	10.40	4111	9.05	10.5
2003	1010	170.5	9.21	3570	168.2	31.5	12.6	21.4	10.33	4580	8.98	10.9
2004	1065	173.0	9.05	3946	171.8	32.7	13.3	24.0	10.22	5011	8.76	12.2
2005	1060	184.8	9.16	4090	171.8	33.1	13.2	23.4	10.45	5150	8.95	12.1
2006	1054	175.9	9.23	4126	169.9	32.9	12.7	21.8	10.42	5180	8.95	12.1
2007	1054	172.5	9.31	4189	169.5	32.6	12.4	21.4	10.50	5243	9.01	12.2
2008	943	174.5	9.62	4126	170.3	32.7	12.1	22.1	10.56	5069	9.10	12.4
2009	956	170.8	9.29	4187	169.4	32.8	11.7	20.9	10.51	5143	9.01	12.4
2010	960	174.4	9.48	3674	169.1	32.1	11.4	21.4	10.61	4634	9.10	12.4
2011	1074	174.0	9.83	3786	170.1	32.3	11.8	21.8	10.75	4860	9.28	12.0
2012	1002	169.1	10.20	4040	165.8	31.0	10.6	19.3	11.26	5042	9.66	12.6
2013	1117	165.4	10.37	4127	164.8	31.1	9.5	18.1	11.19	5244	9.61	12.7
2014	1056	164.1	10.59	4210	165.3	31.4	9.7	18.3	11.25	5266	9.78	12.1
2015	789	168.6	10.23	4000	166.8	31.7	9.8	18.9	11.17	4789	9.58	13.0
2016	951	169.2	10.76	3853	164.6	31.1	9.7	18.0	11.55	4804	9.79	14.1

2.2 Analiza pripustov

Tabela 2.2: Analiza pripustov mladic po letih kmetijah

Leto	S K U P A J							PRVI PRIPUST				DRUGI IN VIŠJI			
	Št. pr.	Usp. pr. (%)	Izl. po pr. (%)	Preg. (%)	DPI (dni)	DPP (dni)	$P_{\bar{z}}$ /pr.	Št. pr.	Prvi (%)	Usp. (%)	$P_{\bar{z}}$ /pr.	Št. pr.	≥ 2 (%)	Usp. (%)	$P_{\bar{z}}$ /pr.
1984	100	87.0		12.0		60.3	8.0	90	90.0	90.0	8.3	10	10.0	60.0	5.3
1985	74	86.5	2.7	9.5	77.0	79.1	7.7	67	90.5	86.6	7.7	7	9.5	85.7	8.0
1986	204	87.3	3.4	9.3	92.1	39.0	7.9	176	86.3	86.4	7.8	28	13.7	92.9	8.6
1987	167	88.6	5.4	5.4	72.6	52.4	7.4	158	94.6	88.6	7.4	9	5.4	88.9	7.2
1988	217	84.3	4.2	10.6	68.4	41.1	7.4	192	88.5	87.5	7.7	25	11.5	60.0	5.1
1989	219	84.9	3.2	11.9	96.7	55.9	7.3	186	84.9	86.6	7.5	33	15.1	75.8	6.7
1990	192	85.9	2.1	11.5	83.0	34.9	7.8	171	89.1	88.9	8.0	21	10.9	61.9	6.1
1991	194	89.2	2.1	8.8	62.0	38.7	7.9	176	90.7	90.3	7.9	18	9.3	77.8	7.8
1992	170	91.2	0.6	8.2	100.0	27.9	8.1	151	88.8	92.1	8.1	19	11.2	84.2	8.0
1993	281	91.1	2.1	6.4	203.8	61.8	8.1	264	93.9	93.2	8.3	17	6.1	58.8	5.8
1994	741	90.3	1.5	6.9	123.3	44.9	8.1	691	93.3	91.2	8.2	50	6.7	109.8	7.1
1995	2067	88.7	2.9	8.1	79.1	38.0	7.7	1916	92.7	89.4	7.6	151	7.3	80.8	7.8
1996	3384	79.5	6.3	14.0	57.2	34.4	6.8	2916	86.2	80.6	6.8	468	13.8	72.4	6.7
1997	3810	80.6	6.6	12.7	56.6	30.9	7.3	3322	87.2	82.0	7.4	488	12.8	71.5	6.7
1998	4605	80.4	7.3	12.1	73.7	35.9	7.4	4072	88.4	81.4	7.4	533	11.6	73.0	7.2
1999	3143	77.5	10.6	11.5	78.7	38.1	7.1	2757	87.7	79.3	7.3	386	12.3	65.5	5.9
2000	3003	72.1	10.8	16.9	68.3	37.6	6.5	2479	82.6	75.2	6.7	524	17.4	57.3	5.6
2001	3094	72.9	10.5	16.4	72.9	39.1	6.5	2584	83.5	74.2	6.4	510	16.5	66.1	6.4
2002	2904	67.2	10.7	16.8	72.4	42.4	6.1	2419	83.3	68.4	6.1	485	16.7	61.4	6.0
2003	3208	68.8	10.9	18.7	88.5	40.9	6.4	2601	81.1	71.3	6.5	607	18.9	58.2	5.7
2004	3009	70.0	9.1	19.9	77.6	42.6	6.3	2410	80.1	72.4	6.4	599	19.9	60.4	5.7
2005	3033	71.6	9.2	18.7	91.4	39.9	6.6	2446	80.6	73.8	6.8	587	19.4	62.5	5.8
2006	3163	76.6	8.4	14.4	83.0	42.5	7.1	2709	85.6	78.9	7.3	454	14.4	63.2	6.0
2007	2804	75.8	8.3	15.3	79.7	47.3	7.1	2361	84.2	77.7	7.1	443	15.8	65.7	6.4
2008	2613	76.6	7.9	15.2	75.3	44.0	7.4	2189	83.8	78.7	7.6	424	16.2	66.3	6.5
2009	2615	75.3	8.4	15.7	83.5	46.3	7.0	2185	83.6	78.8	7.3	430	16.4	57.4	5.3
2010	2629	70.7	9.9	18.3	79.3	46.6	6.7	2181	83.0	74.2	6.9	448	17.0	53.3	5.4
2011	2278	72.4	9.7	16.9	81.2	46.0	7.2	1860	81.7	74.9	7.3	418	18.3	61.5	6.4
2012	2333	70.3	10.7	18.3	77.2	40.5	7.2	1901	81.5	72.8	7.4	432	18.5	59.3	6.3
2013	2605	72.7	10.8	16.1	72.6	43.5	7.6	2183	83.8	75.0	7.8	422	16.2	60.4	6.6
2014	2447	75.4	8.9	15.2	78.2	38.5	8.0	2045	83.6	77.6	8.2	402	16.4	63.9	6.9
2015	2190	70.7	10.1	18.9	88.3	42.8	7.2	1817	83.0	72.2	7.3	373	17.0	63.3	6.7
2016	2188	71.8	9.6	18.4	91.2	44.6	7.8	1755	80.2	74.5	8.0	433	19.8	60.7	6.8

Tabela 2.3: Analiza pripustov starih svinj po letih na kmetijah

Leto	S K U P A J							PRVI PRIPUST				DRUGI IN VIŠJI			
	Št. prip.	Usp. prip. (%)	Izl. po prip. (%)	Preg. (%)	DPI (dni)	DPP (dni)	$P_{\bar{z}}$ / prip.	Št. prip.	Prvi (%)	Usp. (%)	$P_{\bar{z}}$ / prip.	Št. prip.	≥ 2 (%)	Usp. (%)	$P_{\bar{z}}$ / prip.
1984	632	85.1	3.3	11.1	77.2	38.1	8.6	556	88.0	87.2	8.9	76	12.0	75.0	7.3
1985	679	87.3	3.1	8.5	55.0	36.5	8.8	602	88.7	89.9	9.1	77	11.3	68.8	7.0
1986	723	90.0	2.2	7.5	60.8	35.3	8.8	639	88.4	90.0	8.8	84	11.6	90.5	9.1
1987	806	86.2	4.2	8.9	78.7	33.5	8.6	718	89.1	88.0	8.8	88	10.9	71.6	7.3
1988	678	80.5	5.7	12.8	54.8	32.4	8.3	585	86.3	83.3	8.6	93	13.7	63.4	6.5
1989	755	83.4	5.7	10.2	66.2	32.0	8.7	672	89.0	86.5	9.0	83	11.0	59.0	6.0
1990	914	85.9	3.5	9.9	66.4	33.5	8.7	819	89.6	89.0	9.0	95	10.4	59.0	5.9
1991	861	86.1	4.5	8.8	73.5	38.4	8.8	773	89.8	88.4	9.1	88	10.2	65.9	6.6
1992	941	83.0	4.9	11.3	73.5	39.4	8.4	832	88.4	85.7	8.7	109	11.6	62.4	6.0
1993	861	79.4	6.3	14.2	81.4	42.3	8.2	737	85.6	81.9	8.4	124	14.4	64.5	6.4
1994	1379	80.9	4.6	13.9	80.7	43.3	8.5	1169	84.8	84.3	8.9	210	15.2	61.9	6.4
1995	1812	81.6	6.0	12.0	84.4	46.2	8.6	1602	88.4	83.3	8.7	210	11.6	68.8	7.2
1996	2310	77.8	7.1	14.4	89.4	43.1	8.2	1976	85.5	80.3	8.4	334	14.5	62.9	6.7
1997	2892	77.5	6.5	15.6	91.0	43.8	8.1	2457	85.0	79.5	8.3	435	15.0	66.0	7.0
1998	3538	74.8	7.3	17.2	93.1	44.8	7.9	2949	83.4	78.3	8.2	589	16.6	57.9	6.1
1999	4095	71.1	10.1	17.7	98.9	44.9	7.4	3339	81.5	74.8	7.8	756	18.5	55.2	5.7
2000	4131	72.4	7.5	19.2	87.8	42.8	7.6	3301	79.9	75.5	7.9	830	20.1	60.1	6.3
2001	4089	70.3	9.5	19.7	84.4	44.0	7.2	3308	80.9	73.2	7.6	781	19.1	58.0	5.8
2002	4357	73.3	8.4	17.8	89.3	43.0	7.6	3553	81.5	76.3	8.0	804	18.5	60.1	6.2
2003	5178	69.0	9.1	21.0	109.1	47.6	7.1	4138	79.9	72.8	7.5	1040	20.1	53.5	5.5
2004	5820	67.3	9.3	22.3	104.5	48.9	6.9	4509	77.5	71.5	7.3	1311	22.5	52.7	5.4
2005	5729	71.3	8.1	19.9	94.8	49.6	7.5	4547	79.4	75.3	7.9	1182	20.6	56.3	5.9
2006	5641	73.0	8.4	17.7	106.5	48.7	7.6	4579	81.2	75.9	7.9	1062	18.8	60.5	6.3
2007	5765	72.4	8.0	18.6	109.4	52.4	7.6	4705	81.6	76.2	8.0	1060	18.4	55.7	5.8
2008	5851	70.3	9.1	19.6	100.7	57.8	7.4	4704	80.4	74.5	7.9	1147	19.6	53.0	5.6
2009	5723	73.3	7.6	18.1	107.0	58.8	7.7	4670	81.6	77.6	8.2	1053	18.4	54.3	5.6
2010	5173	71.1	8.6	19.0	99.7	54.1	7.5	4162	80.5	75.3	8.0	1011	19.5	54.1	5.8
2011	5396	69.9	10.1	19.1	98.6	52.5	7.5	4305	79.8	73.8	7.9	1091	20.2	55.0	5.9
2012	5372	75.0	7.2	17.2	92.0	52.2	8.4	4444	82.7	78.3	8.8	928	17.3	59.3	6.7
2013	5617	73.4	8.8	17.2	98.2	51.7	8.2	4652	82.8	76.2	8.5	965	17.2	59.6	6.7
2014	5724	73.5	8.6	17.0	97.2	48.7	8.3	4759	83.1	75.7	8.5	965	16.9	62.9	7.0
2015	5523	72.1	8.8	18.5	112.7	53.9	8.1	4480	81.1	75.4	8.4	1043	18.9	58.1	6.5
2016	5330	72.5	7.8	19.2	101.5	48.0	8.4	4304	80.8	76.7	8.9	1026	19.3	54.7	6.2

Tabela 2.4: Distribucija pregonitev po letih na kmetijah

Leto	MLADICE					STARE SVINJE				
	Št. preg.	DPP (dni)	do 25. dne (%)	25-40 dni (%)	po 40. dnevu (%)	Št. preg.	DPP (dni)	do 25. dne (%)	25-40 dni (%)	po 40. dnevu (%)
1984	12	60.3	41.7	8.3	50.0	40	38.1	50.7	18.3	31.0
1985	7	79.1	28.6	0.0	71.4	58	36.5	58.6	12.1	29.3
1986	7	39.0	52.6	5.3	42.1	52	35.3	61.1	11.1	27.8
1987	9	52.4	22.2	22.2	55.6	72	33.5	58.3	15.3	26.4
1988	23	41.1	39.1	21.7	39.1	87	32.4	56.3	26.4	17.2
1989	26	55.9	30.8	7.7	61.5	77	32.0	59.7	16.9	23.4
1990	22	34.9	45.5	27.3	27.3	90	33.5	56.0	17.6	26.4
1991	17	38.7	29.4	23.5	47.1	76	38.4	56.6	14.5	29.0
1992	14	27.9	71.4	7.1	21.4	106	39.4	50.9	11.3	37.7
1993	18	61.8	16.7	22.2	61.1	122	42.3	48.4	15.6	36.1
1994	51	44.9	49.0	15.7	35.3	192	43.3	42.2	17.7	40.1
1995	167	38.0	44.3	24.0	31.8	217	46.2	37.3	19.8	42.9
1996	473	34.4	51.6	23.3	25.2	333	43.1	46.8	13.8	39.3
1997	482	30.9	55.2	22.8	22.0	451	43.8	48.3	12.2	39.5
1998	556	35.9	52.7	21.9	25.3	607	44.8	48.8	12.5	38.7
1999	362	38.1	51.7	18.2	30.1	725	44.9	44.8	14.6	40.5
2000	508	37.6	50.2	21.3	28.5	793	42.8	44.4	15.4	40.3
2001	506	39.1	50.4	20.6	29.0	804	44.0	47.1	16.0	36.8
2002	498	42.4	48.5	18.0	33.5	774	43.0	45.7	17.6	36.7
2003	601	40.9	46.3	21.6	32.1	1089	47.6	41.3	16.3	42.3
2004	599	42.6	47.7	16.0	36.2	1300	48.9	40.8	13.2	46.0
2005	566	39.9	47.9	19.6	32.5	1138	49.6	39.2	14.7	46.1
2006	457	42.5	48.1	16.8	35.0	1001	48.7	39.8	15.9	44.4
2007	429	47.3	41.7	18.6	39.6	1075	52.4	35.2	15.8	49.1
2008	397	44.0	46.9	18.9	34.2	1147	57.8	33.1	14.2	52.7
2009	411	46.3	49.1	15.6	35.3	1036	58.8	31.9	14.4	53.7
2010	480	46.6	45.1	13.3	41.6	985	54.1	35.6	16.2	48.2
2011	384	46.0	37.7	20.1	42.2	1033	52.5	34.1	18.2	47.7
2012	427	40.5	51.3	14.5	34.2	923	52.2	37.4	14.2	48.4
2013	418	43.5	47.1	18.2	34.7	964	51.7	35.4	15.2	49.5
2014	373	38.5	47.2	22.3	30.6	970	48.7	38.1	15.3	46.6
2015	413	42.8	40.0	22.3	37.8	1021	53.9	34.6	15.3	50.2
2016	402	44.6	44.3	15.9	39.8	1023	48.0	38.2	16.8	45.0

2.3 Analiza reprodukcijskega ciklusa

Tabela 2.5: Starost mladic ob pravitvi in število krmnih dni na živorojenega pujska pri mladicah na kmetijah

Leto	Št. pras.	Starost ob 1.prip. pras.	Starost ob pras.	do 360 dni (%)	361-420 dni (%)	≥421 dni (%)	Izl. (%)	pred prip. (%)	po prip. (%)	Starost ob izl.	kDOP (dni)	KD/ $P_{\bar{z}}$
1984	87	272.6	388.8	64.4	26.4	9.2					188.8	20.5
1985	65	237.2	352.2	93.8	6.2		3.0			318.0	155.8	17.6
1986	175	255.9	374.0	74.3	17.7	8.0	3.8			339.6	179.6	19.7
1987	149	255.9	373.4	67.1	22.8	10.1	6.9			331.1	183.1	22.0
1988	184	234.8	353.1	70.1	22.3	7.6	3.7			327.6	157.9	18.2
1989	185	240.7	362.9	65.4	26.5	8.1	3.6			371.3	169.4	19.6
1990	165	249.8	366.9	67.3	22.4	10.3	2.9			322.7	170.6	19.0
1991	173	246.8	365.2	54.9	34.1	11.0	1.7			337.7	167.6	18.9
1992	153	257.6	375.8	51.6	32.0	16.3					175.8	19.8
1993	257	260.0	376.9	47.9	36.2	9.3	2.6			577.7	187.2	21.1
1994	349	249.4	368.9	54.2	33.2	12.6	3.5	42.9	57.1	396.3	177.5	19.7
1995	608	245.5	367.5	54.1	33.9	12.0	6.7	49.7	50.3	340.2	163.5	18.5
1996	632	240.3	364.1	58.5	30.1	11.4	14.1	57.8	42.2	294.7	168.4	18.7
1997	545	241.8	364.3	63.3	30.8	5.9	16.1	56.2	43.8	306.3	173.0	19.2
1998	893	234.8	357.7	61.0	30.9	8.1	10.9	47.0	53.0	311.3	164.2	17.9
1999	794	242.6	365.9	53.9	34.9	11.2	19.6	57.7	42.3	311.6	184.4	20.2
2000	698	236.6	362.2	57.7	32.4	9.9	16.7	42.7	57.3	316.2	173.7	18.9
2001	899	237.6	363.0	59.6	29.4	11.0	21.2	48.2	51.8	300.7	183.2	20.8
2002	862	237.2	364.2	56.6	33.2	10.2	19.0	47.8	52.2	309.6	179.5	19.6
2003	940	241.0	366.5	22.1	42.6	35.3	19.4	47.4	52.6	323.6	185.8	20.3
2004	1023	242.6	369.8	52.5	34.2	13.3	21.1	59.2	40.8	303.6	187.5	20.6
2005	928	251.7	378.1	43.8	39.3	16.9	18.0	46.4	53.6	327.3	191.2	21.0
2006	977	248.8	374.3	44.2	40.9	14.8	17.2	56.6	43.4	322.1	185.6	19.9
2007	969	243.5	369.2	54.7	32.5	12.8	20.8	65.4	34.6	302.0	183.2	19.7
2008	874	245.8	370.4	53.5	32.8	13.6	25.0	74.4	25.6	292.4	186.6	19.5
2009	866	240.8	365.7	58.5	29.0	12.5	21.0	64.1	35.9	305.8	181.1	19.4
2010	922	249.6	376.4	49.0	35.8	15.2	23.3	59.5	40.5	303.6	191.7	20.2
2011	1042	245.2	370.8	51.0	35.8	13.2	22.1	65.3	34.7	297.9	187.4	19.0
2012	964	243.3	369.0	55.3	32.5	12.2	23.0	55.1	44.9	308.1	190.2	18.6
2013	1035	238.5	362.7	57.7	32.7	9.6	21.5	52.5	47.5	291.9	176.0	16.9
2014	981	239.1	362.6	59.6	31.4	9.0	21.4	63.0	37.0	289.2	176.0	16.6
2015	845	242.8	367.8	54.5	34.1	11.4	21.2	54.4	45.6	314.4	186.2	18.2
2016	907	243.0	369.2	55.1	32.4	12.5	17.7	49.5	50.5	312.0	184.4	17.0

Tabela 2.6: Doba med prasiatvama in število krmnih dni na pujska po letih na kmetijah

Leto	Št. pras.	DMP (dni)	do 160 dni (%)	161-200 dni (%)	≥ 201 dni (%)	Izl. (%)	DI (dni)	kDMP (dni)	G_L	$P_{\bar{z}}/$ leto	KD/ $P_{\bar{z}}$
1984	510	162.2	70.0	21.4	8.6	7.9	105.3	171.3	2.10	21.4	17.0
1985	607	158.8	76.3	18.5	5.3	10.3	72.9	167.2	2.20	21.9	16.6
1986	618	160.2	74.8	18.8	6.5	9.9	62.9	167.2	2.20	21.5	17.0
1987	701	160.9	71.9	21.8	6.3	14.1	82.0	174.4	2.10	20.7	17.6
1988	505	161.6	61.2	34.1	4.7	18.9	73.5	178.7	2.00	20.5	17.8
1989	637	162.9	59.7	34.1	6.3	15.3	94.3	179.9	2.00	20.9	17.5
1990	748	166.2	52.3	39.0	8.7	11.8	71.5	175.7	2.10	20.7	17.6
1991	726	166.6	52.3	39.1	8.5	13.6	84.4	179.8	2.00	20.7	17.7
1992	769	169.1	46.6	46.0	7.5	13.1	87.5	182.3	2.00	20.3	18.0
1993	684	174.4	35.1	49.7	15.2	18.6	112.9	200.1	1.80	18.7	19.5
1994	1023	171.7	46.8	41.4	11.7	16.4	104.8	192.5	1.90	19.7	18.5
1995	2038	169.4	50.4	39.8	9.8	16.1	99.0	189.4	1.90	20.4	17.9
1996	1789	170.4	50.8	38.2	11.1	18.0	103.0	194.4	1.90	19.9	18.4
1997	2220	170.6	57.8	30.5	11.7	16.1	105.6	191.7	1.90	19.8	18.4
1998	2594	168.3	54.4	36.5	9.1	18.0	109.2	193.4	1.90	19.9	18.4
1999	2890	168.4	55.7	34.4	10.0	20.6	115.4	199.8	1.80	19.0	19.2
2000	2959	168.2	58.2	31.2	10.5	16.6	106.8	190.5	1.90	20.0	18.2
2001	2796	167.1	61.5	29.0	9.4	20.8	102.5	194.9	1.90	19.3	19.0
2002	3163	166.0	63.7	27.5	8.8	18.4	103.1	190.2	1.90	20.0	18.3
2003	3605	167.6	25.4	56.2	18.4	20.3	123.4	200.4	1.82	18.8	19.4
2004	3833	170.6	59.3	28.2	12.5	19.2	128.8	202.8	1.80	18.4	19.8
2005	3998	169.9	58.4	30.1	11.5	17.4	117.5	196.0	1.86	19.4	18.8
2006	4043	168.8	59.6	29.3	11.2	17.7	121.7	196.2	1.86	19.4	18.8
2007	4184	168.9	60.8	28.1	11.1	18.9	118.1	197.8	1.85	19.4	18.8
2008	4058	169.1	61.4	27.7	10.8	19.5	119.1	199.7	1.83	19.2	19.0
2009	4133	167.5	63.9	25.8	10.3	17.1	120.4	194.0	1.88	19.9	18.4
2010	3740	168.3	66.6	22.9	10.5	19.8	113.5	197.7	1.85	19.5	18.7
2011	3722	169.3	62.0	26.7	11.4	21.2	120.0	202.7	1.80	19.3	18.9
2012	3997	165.0	68.7	22.6	8.7	18.1	104.2	188.9	1.93	21.7	16.8
2013	4133	164.3	70.7	20.0	9.4	19.9	106.4	191.8	1.90	21.4	17.1
2014	4134	164.2	68.1	23.5	8.4	19.6	103.7	190.8	1.91	21.4	17.0
2015	4047	167.1	64.8	25.6	9.6	19.0	126.9	197.6	1.85	20.7	17.7
2016	3789	164.3	68.4	23.1	8.5	17.4	118.3	190.2	1.92	22.2	16.5

Tabela 2.7: Velikost gnezda ob rojstvu, gospodarnost priraje pujskov in delež letne obnove črede svinj na kmetijah

Leto	Št. pras.	Št. izl.	$P_{\bar{z}}$ / gn.	KD/ gn.	G_L	KD/ $P_{\bar{z}}$	Št. svinj v čredi	Remont (%)	G_S
1984									
1985									
1986									
1987									
1988									
1989									
1990									
1991									
1992									
1993									
1994	1372	221	10.04	187.2	1.95	18.6	816	27.1	7.20
1995	2646	595	10.17	174.5	2.09	17.2	2290	26.0	8.05
1996	2421	849	10.17	178.7	2.04	17.6	2209	38.4	5.32
1997	2765	1008	10.14	180.9	2.02	17.8	2597	38.8	5.20
1998	3487	1042	10.18	176.1	2.07	17.3	3077	33.9	6.12
1999	3684	1420	10.13	192.4	1.90	19.0	2938	48.3	3.93
2000	3658	1054	10.20	183.3	1.99	18.0	2632	40.0	4.97
2001	3695	1370	9.92	189.6	1.93	19.1	2657	51.6	3.73
2002	4025	1221	10.14	185.9	1.96	18.3	2683	45.5	4.32
2003	4545	1511	10.10	194.6	1.90	19.3	3187	47.4	4.01
2004	4856	1548	9.98	197.2	1.85	19.8	3284	47.1	3.93
2005	4926	1338	10.19	194.3	1.88	19.1	3277	40.8	4.60
2006	5020	1411	10.20	192.1	1.90	18.8	3438	41.0	4.63
2007	5153	1613	10.29	192.6	1.90	18.7	3428	47.0	4.03
2008	4932	1728	10.35	195.2	1.87	18.9	3317	52.1	3.59
2009	4999	1429	10.36	189.7	1.92	18.3	3221	44.4	4.34
2010	4662	1564	10.36	195.7	1.87	18.9	3085	50.7	3.68
2011	4764	1578	10.54	197.4	1.85	18.7	3073	51.4	3.60
2012	4961	1430	11.04	189.3	1.93	17.2	2999	47.7	4.04
2013	5168	1601	11.08	186.6	1.96	16.9	3153	50.8	3.85
2014	5115	1571	11.10	186.0	1.96	16.8	3125	50.3	3.90
2015	4892	1477	11.00	193.9	1.88	17.6	3162	46.7	4.03
2016	4696	1201	11.41	188.4	1.94	16.5	2879	41.7	4.64

Tabela 2.8: Dolžina laktacije in starostna struktura po letih na kmetijah

Leto	DOLŽINA LAKTACIJE (dni)							P R A S I T V E		
	Lakt. (dni)	do 14 dni (%)	15-19 dni (%)	20-24 dni (%)	25-29 dni (%)	30-34 dni (%)	≥35 dni (%)	prva (%)	2.-7. (%)	≥8 (%)
1984	30.6	4.3	0.4	2.7	92.6	0.0	0.0	25.4	74.6	0.0
1985	30.4	7.0	0.1	6.5	86.4	0.0	0.0	9.3	66.3	24.4
1986	29.3	4.0	0.7	9.3	86.0	0.0	0.0	21.0	56.7	22.3
1987	30.0	4.0	1.0	8.5	86.5	0.0	0.0	16.4	68.2	15.4
1988	31.4	6.0	1.9	5.8	86.3	0.0	0.0	23.5	67.8	8.7
1989	32.1	3.6	1.1	6.0	89.3	0.0	0.0	20.3	75.2	4.5
1990	34.0	3.9	1.1	8.4	86.6	0.0	0.0	16.7	74.5	8.8
1991	35.2	4.3	0.6	7.4	87.7	0.0	0.0	17.3	71.5	11.2
1992	35.4	4.3	0.6	3.8	91.3	0.0	0.0	14.7	68.3	17.0
1993	36.5	4.6	1.2	3.8	90.4	0.0	0.0	23.9	61.7	14.4
1994	35.5	2.2	0.5	4.4	11.0	26.1	55.8	25.4	64.4	10.2
1995	35.5	1.8	0.4	1.1	11.5	29.3	55.9	23.0	68.6	8.4
1996	35.2	1.9	0.4	2.0	13.4	26.2	56.1	26.1	66.0	7.9
1997	34.7	3.0	0.6	2.7	14.6	29.8	49.2	19.7	71.8	8.5
1998	34.6	2.8	0.6	2.6	14.2	33.7	46.1	57.1	37.2	5.7
1999	33.8	3.0	0.9	4.0	16.6	34.5	41.1	46.7	45.4	7.9
2000	32.6	2.9	1.1	5.0	19.6	38.1	33.2	43.3	46.1	10.6
2001	31.8	3.4	0.8	5.6	25.3	39.5	25.5	45.4	44.7	9.9
2002	31.5	3.4	1.3	5.3	26.4	40.5	23.1	39.9	49.5	10.6
2003	31.5	3.9	0.9	5.8	29.6	36.8	22.9	39.1	51.2	9.7
2004	32.6	3.6	0.6	3.0	22.8	42.0	28.1	37.4	51.9	10.6
2005	33.1	3.2	0.6	2.7	22.7	38.7	32.2	35.0	54.7	10.4
2006	33.0	3.0	0.6	3.1	25.2	37.2	30.9	37.8	51.4	10.8
2007	32.5	3.4	0.7	3.2	26.6	38.5	27.7	35.9	51.5	12.6
2008	32.8	3.9	0.4	2.1	21.8	41.7	30.1	35.7	51.5	12.8
2009	32.8	4.0	0.4	1.9	23.6	40.6	29.5	34.3	53.1	12.6
2010	32.1	4.1	0.4	2.1	22.6	44.8	26.1	36.0	51.5	12.6
2011	32.3	3.6	0.8	3.6	20.6	41.9	29.5	34.8	53.7	11.5
2012	31.1	3.7	2.3	6.7	22.0	40.3	25.0	32.2	57.5	10.3
2013	31.1	3.2	1.6	6.6	25.9	37.9	24.8	33.4	56.9	9.7
2014	31.4	4.0	2.7	6.9	23.3	36.9	26.3	32.8	56.2	11.0
2015	31.7	2.7	1.4	8.2	23.6	36.2	27.9	32.6	55.3	12.1
2016	31.2	2.7	0.6	8.6	27.0	36.2	24.8	32.1	55.0	12.9

2.4 Interim obdobje in poodstavitveni premor

Tabela 2.9: Interim obdobje po letih na kmetijah

Leto	P R V E S N I C E				S T A R E S V I N J E			
	IO (dni)	do 12 dni (%)	12-40 dni (%)	≥41 dni (%)	IO (dni)	do 12 dni (%)	12-40 dni (%)	≥41 dni (%)
1984	25.2	50.5	29.4	20.1	10.7	81.8	14.4	3.8
1985	30.1	46.3	26.0	27.7	9.3	87.6	10.1	2.3
1986	21.9	47.0	32.7	20.3	13.1	79.8	12.9	7.3
1987	23.1	57.1	25.2	17.7	13.8	77.7	15.4	6.9
1988	17.6	70.7	19.2	10.1	10.0	83.4	13.5	3.1
1989	21.8	53.5	30.8	15.7	10.9	81.6	14.2	4.2
1990	26.9	55.3	27.7	17.0	13.3	74.8	19.2	6.0
1991	29.8	45.5	32.9	21.6	12.5	79.5	14.1	6.4
1992	28.2	33.5	30.0	36.5	12.2	77.8	17.3	4.9
1993	24.9	47.7	30.7	21.6	14.0	72.2	21.5	6.4
1994	30.2	37.6	33.3	29.1	13.0	68.6	17.5	13.9
1995	21.9	54.3	29.8	15.9	12.0	73.7	20.4	5.9
1996	20.9	51.3	32.8	15.9	10.7	79.7	15.3	5.0
1997	24.7	50.6	31.1	18.3	11.5	77.5	17.5	4.9
1998	17.9	59.1	29.1	11.7	10.8	79.8	15.0	4.1
1999	18.7	57.3	30.3	12.6	11.3	79.3	16.1	5.0
2000	20.6	58.4	26.9	14.7	10.9	80.9	14.8	4.3
2001	18.0	59.6	25.4	14.9	11.1	78.4	14.7	6.8
2002	19.3	58.5	28.4	13.1	10.2	82.2	14.3	3.5
2003	18.2	62.1	24.8	13.1	11.5	79.5	15.7	4.8
2004	22.1	58.7	22.0	19.3	12.1	80.1	12.9	7.0
2005	21.2	57.5	27.0	15.5	11.6	80.0	15.0	5.0
2006	20.5	59.4	24.5	16.1	11.6	79.6	14.9	5.5
2007	18.5	61.4	24.9	13.7	11.2	82.2	13.0	4.8
2008	18.4	67.3	19.4	13.3	11.8	81.3	12.7	6.0
2009	16.9	70.2	17.4	12.4	12.0	82.9	11.1	6.0
2010	17.9	69.1	19.4	11.5	9.9	85.8	10.8	3.4
2011	17.0	66.3	23.7	10.0	11.1	83.6	11.2	5.2
2012	15.0	75.4	15.8	8.8	10.1	85.2	11.1	3.8
2013	12.3	80.1	13.4	6.5	9.0	88.1	8.8	3.1
2014	13.7	77.1	14.9	8.0	9.0	88.5	8.3	3.2
2015	14.7	75.1	15.3	9.6	9.2	87.9	8.7	3.4
2016	14.4	78.3	13.1	8.6	9.8	85.8	10.5	3.7

Tabela 2.10: Poodstavitveni premor po letih na kmetijah

Leto	PRVESNICE					STARE SVINJE				
	Št. svinj	PP (dni)	do 12 dni (%)	13-60 dni (%)	≥61 dni (%)	Št. svinj	PP (dni)	do 12 dni (%)	13-60 dni (%)	≥61 dni (%)
1984	109	31.3	44.0	40.5	15.5	527	15.4	73.8	20.8	5.4
1985	69	37.2	42.0	40.3	17.7	610	13.8	79.7	16.0	4.3
1986	147	25.1	47.1	36.1	16.8	576	16.8	75.4	14.4	10.2
1987	142	28.7	51.5	34.5	14.0	664	18.0	70.4	23.6	6.0
1988	167	24.0	56.3	34.8	8.9	511	15.5	73.6	22.2	4.2
1989	215	28.5	46.5	30.7	22.8	540	14.3	73.7	23.5	2.8
1990	177	33.6	49.7	35.6	14.7	738	17.7	68.0	26.3	5.7
1991	143	32.1	41.3	42.0	16.7	717	17.3	72.1	21.9	6.0
1992	167	35.7	37.7	42.5	19.8	774	17.2	69.8	23.8	6.5
1993	218	30.6	42.2	44.0	13.8	643	20.5	63.1	30.0	6.8
1994	357	30.2	33.0	39.0	28.0	1022	20.5	61.1	24.8	14.1
1995	427	28.5	46.7	39.9	13.4	1385	17.8	67.2	25.8	6.9
1996	587	31.1	43.3	40.4	16.3	1723	17.9	69.1	23.6	7.3
1997	743	33.8	41.6	39.7	18.5	2149	18.4	67.9	24.5	7.4
1998	745	28.8	47.7	39.6	12.6	2793	20.0	67.7	23.2	8.1
1999	1035	29.9	45.0	40.1	15.1	3060	21.5	66.1	24.8	9.3
2000	783	33.5	43.9	38.3	17.8	3348	20.6	66.5	24.6	8.9
2001	1058	31.6	45.1	36.0	18.9	3031	20.0	65.9	24.0	10.1
2002	1028	31.4	45.3	40.6	14.1	3329	19.7	69.2	22.9	7.9
2003	1219	32.5	47.5	35.4	17.1	3959	23.0	65.4	24.1	10.5
2004	1404	40.3	43.2	33.0	23.8	4416	25.8	63.9	22.5	13.6
2005	1344	40.6	43.1	35.5	21.4	4385	24.1	65.6	23.5	10.9
2006	1176	36.4	45.3	34.6	20.1	4465	22.3	66.6	23.1	10.3
2007	1246	34.3	49.1	33.9	17.0	4519	23.8	68.3	20.7	11.0
2008	1300	38.4	50.6	27.4	22.0	4551	25.2	67.2	21.2	11.6
2009	1139	35.7	54.4	27.2	18.4	4584	26.3	69.5	18.1	12.4
2010	1120	38.8	52.3	29.5	18.2	4053	24.1	70.0	19.5	10.5
2011	1301	36.4	46.8	33.9	19.3	4095	22.9	69.4	19.8	10.8
2012	1244	31.5	58.7	24.5	16.8	4128	20.8	72.6	18.6	8.8
2013	1236	26.3	61.9	25.6	12.5	4381	19.4	74.7	16.3	9.0
2014	1328	27.6	60.9	25.0	14.1	4396	18.4	75.0	16.7	8.3
2015	1057	31.7	55.8	27.9	16.3	4466	20.7	73.0	17.3	9.7
2016	1097	27.6	63.5	23.4	13.1	4233	22.7	70.7	18.8	10.5

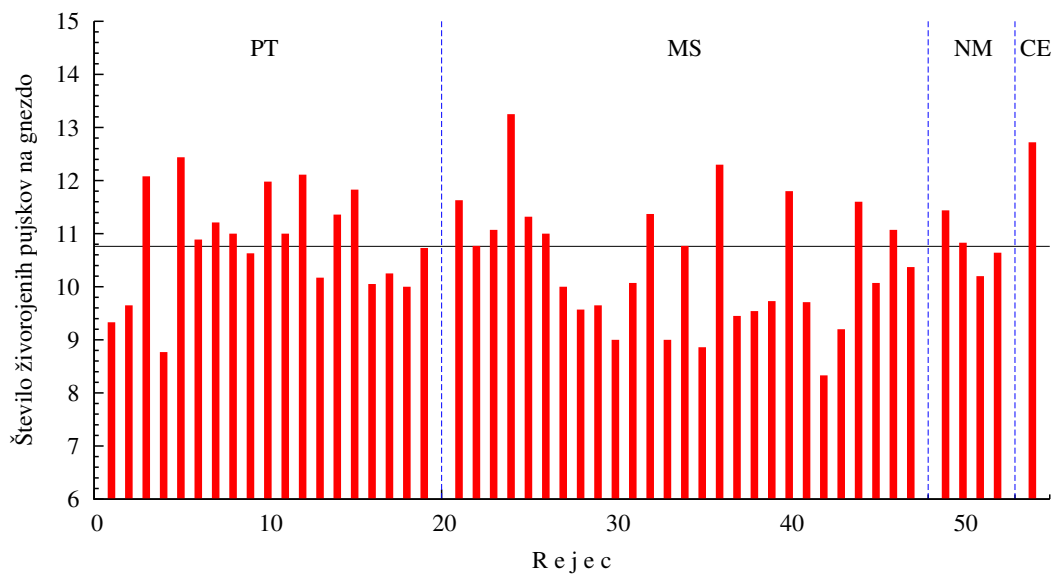
2.5 Analiza izločitev

Tabela 2.11: Izločitve svinj po letih na kmetijah

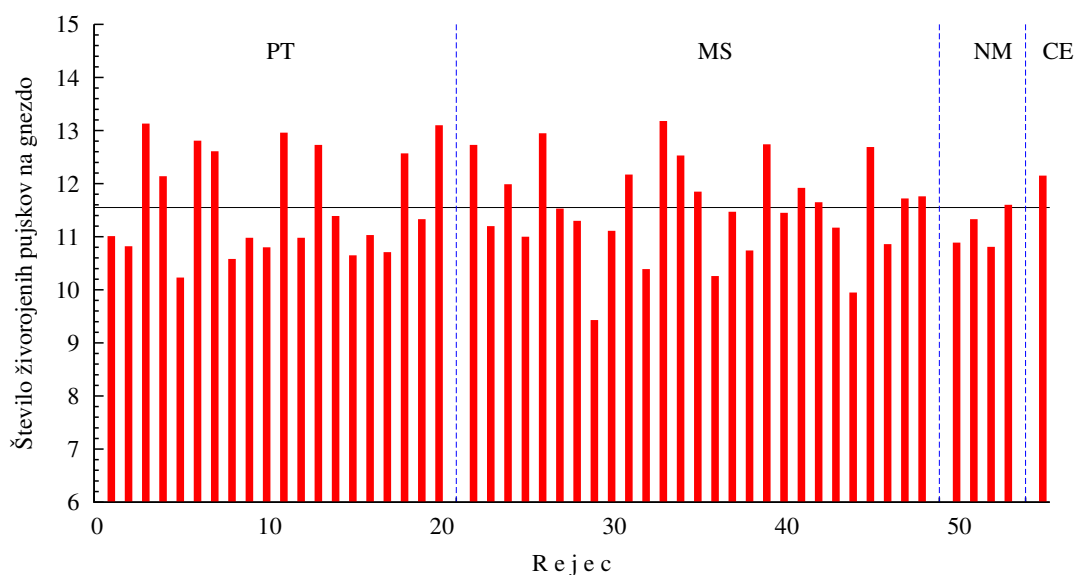
Leto	MLADICE							STARE SVINJE					
	Št. izl.	DOI (dni)	Izločitve		Vzrok izločitve			Št. izl.	DI (dni)	Izločitve		Vzrok izločitve	
			pred	po pr.	8	9	10			pred	po pr.	9	10
1984	0							50	95.6	66.0	34.0	14.0	14.0
1985	4	178.5						69	75.1	68.1	31.9	10.1	13.0
1986	7	138.2						83	59.5	78.3	21.7	7.2	6.0
1987	20	94.9						139	69.3	74.8	25.2	7.9	5.0
1988	6	144.0						112	77.6	70.5	29.5	1.8	5.4
1989	6	171.3						119	101.2	56.3	43.7	8.4	16.8
1990	6	139.3						102	73.7	76.5	25.5	10.8	6.9
1991	3	137.7						125	85.8	63.2	36.8	9.6	4.8
1992	0							105	92.0	59.1	40.9	14.3	6.7
1993	6	149.8						158	100.4	64.6	35.4	8.2	7.0
1994	17	168.6	52.9	47.1	17.6	29.4	5.9	127	101.1	71.7	28.3	12.6	6.3
1995	193	108.6	60.6	39.4	26.4	23.3	5.2	308	96.8	65.3	34.7	10.1	5.5
1996	495	95.2	57.4	42.6	30.7	31.9	4.4	423	105.2	58.9	41.1	13.2	8.7
1997	524	116.3	52.7	47.3	22.1	27.7	10.9	422	109.9	55.0	45.0	19.9	8.1
1998	563	108.2	51.5	48.5	17.9	30.0	9.6	638	107.8	56.1	43.9	17.7	6.4
1999	551	113.5	57.9	42.1	18.1	28.9	8.3	730	121.5	49.7	50.3	18.6	9.2
2000	510	113.9	45.1	54.9	21.4	37.8	7.6	634	110.5	49.1	50.9	15.5	10.1
2001	619	110.4	45.4	54.6	21.5	34.9	10.8	780	109.0	48.6	51.4	17.4	12.4
2002	474	108.8	48.9	51.1	21.9	33.8	8.6	769	105.5	51.6	48.4	17.9	10.0
2003	684	125.9	52.2	47.8	21.3	39.5	6.6	915	121.8	43.7	56.3	22.4	9.4
2004	577	113.2	57.4	42.6	22.4	22.9	7.8	974	138.7	45.5	54.5	17.5	10.9
2005	467	149.4	39.4	60.6	29.3	34.5	12.2	894	124.4	49.3	50.7	15.5	15.1
2006	625	123.9	62.6	37.4	42.6	22.7	7.4	924	130.6	49.1	50.9	21.8	9.5
2007	634	102.8	66.9	33.1	41.0	19.1	5.5	1008	124.3	53.5	46.5	17.4	10.6
2008	669	104.5	71.3	28.7	46.5	16.6	6.6	1001	136.3	46.7	53.3	20.0	11.5
2009	600	99.8	62.8	37.2	45.0	24.0	8.2	908	125.8	52.8	47.2	20.7	10.1
2010	585	116.7	58.1	41.9	29.6	21.7	13.2	966	129.8	51.8	48.2	22.5	11.9
2011	566	111.8	59.9	40.1	32.9	27.4	7.1	932	126.1	48.0	52.0	26.8	11.8
2012	613	104.7	54.3	45.7	30.7	27.6	11.3	959	103.8	56.6	43.4	21.5	8.8
2013	552	102.6	52.7	47.3	28.8	28.4	11.6	1095	110.4	55.4	44.6	19.6	10.1
2014	556	96.0	57.6	42.4	30.9	27.7	8.8	974	113.2	48.5	51.5	24.0	11.4
2015	454	116.9	54.0	46.0	32.4	26.9	13.2	903	134.7	46.7	53.3	24.8	14.5
2016	404	111.3	52.2	47.8	27.7	30.2	11.4	838	126.5	49.4	50.6	18.3	14.7

Poglavje 3

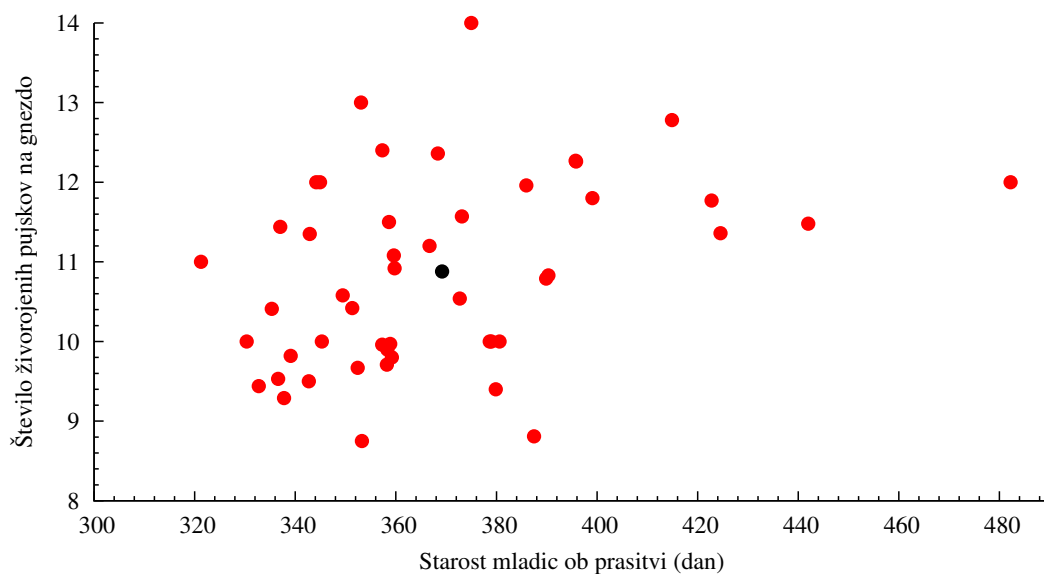
Grafični prikaz rezultatov plodnosti



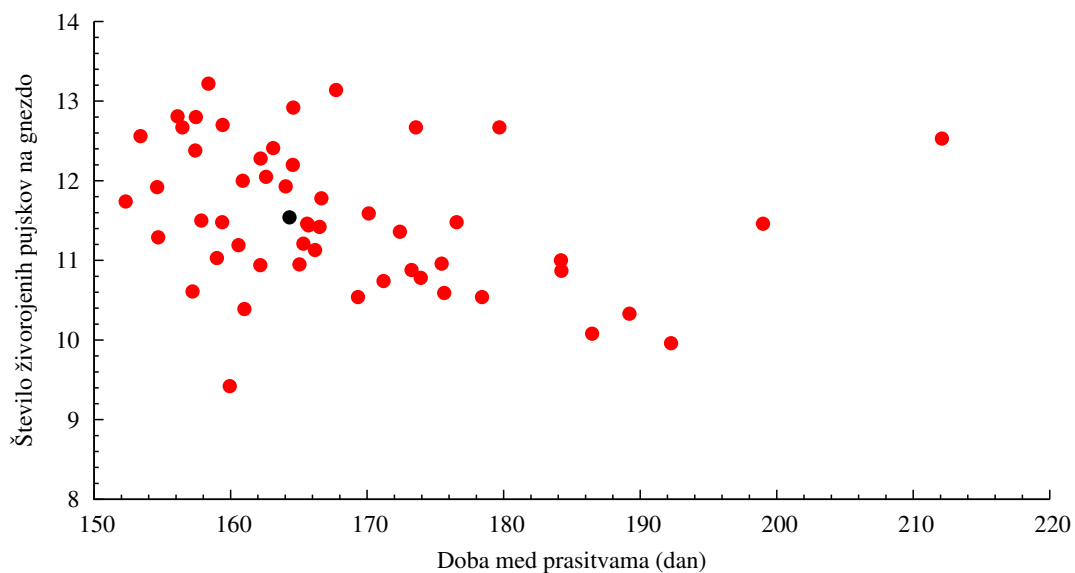
Slika 3.1: Število živorojenih pujskov pri mladicah na kmetijah po zavodih v Sloveniji v letu 2016



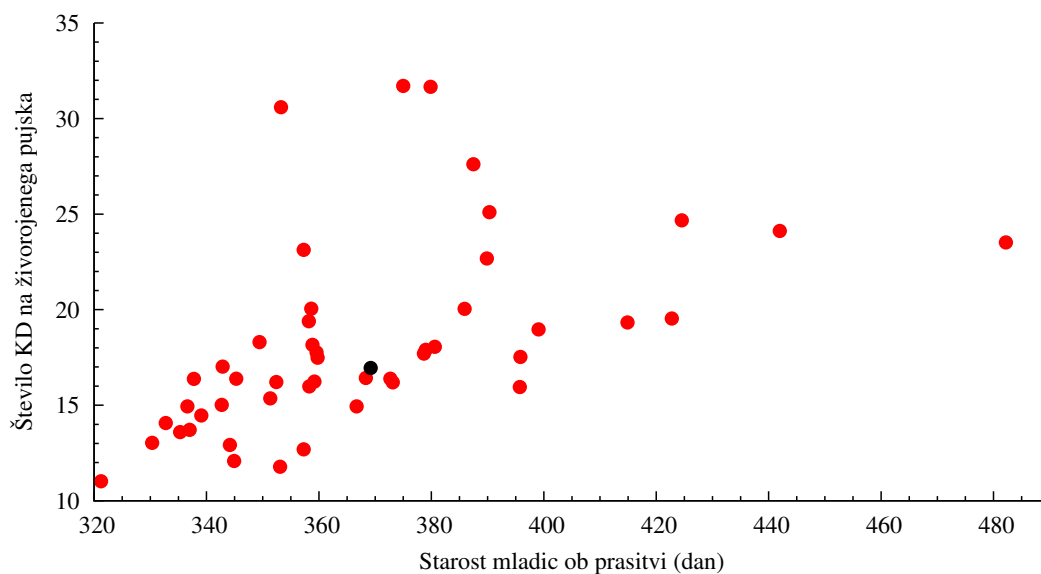
Slika 3.2: Število živorojenih pujskov pri starih svinjah na kmetijah po zavodih v Sloveniji v letu 2016



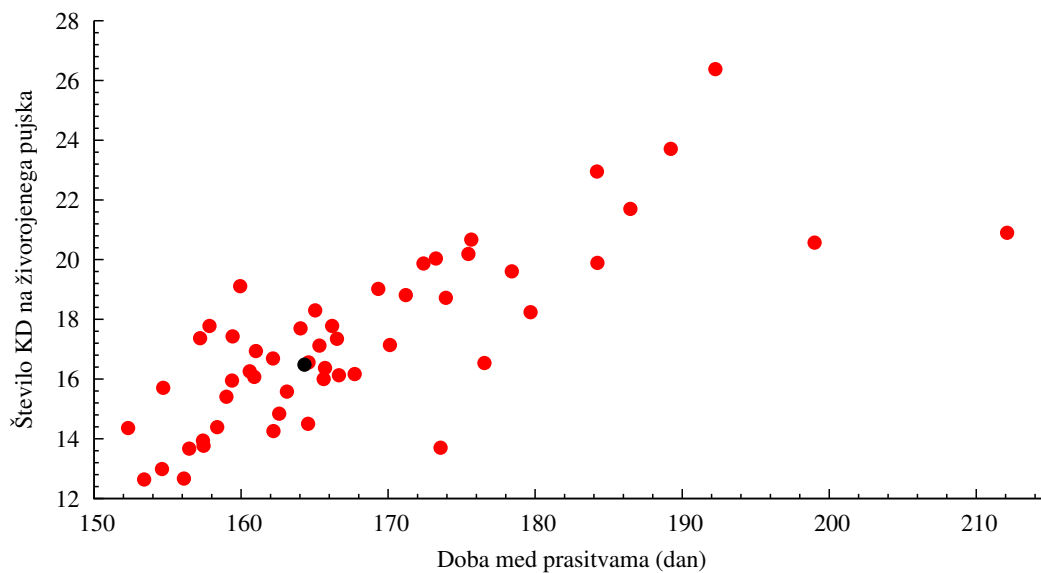
Slika 3.3: Število živorojenih pujskov na gnezdo in starost mladic ob praritvi na kmetijah v Sloveniji v letu 2016



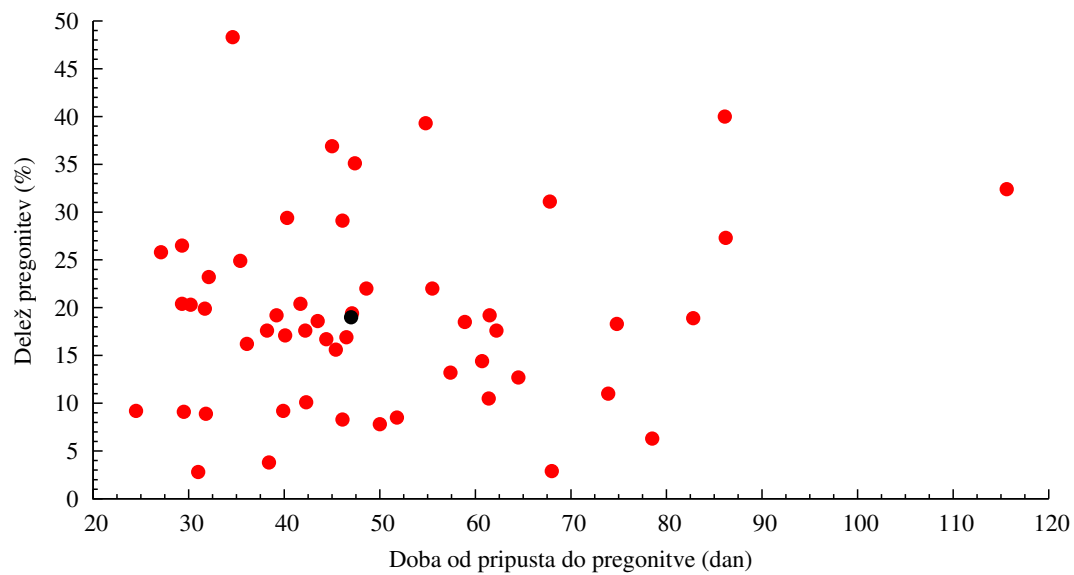
Slika 3.4: Število živorojenih pujskov na gnezdo in doba med praritvama na kmetijah v Sloveniji v letu 2016



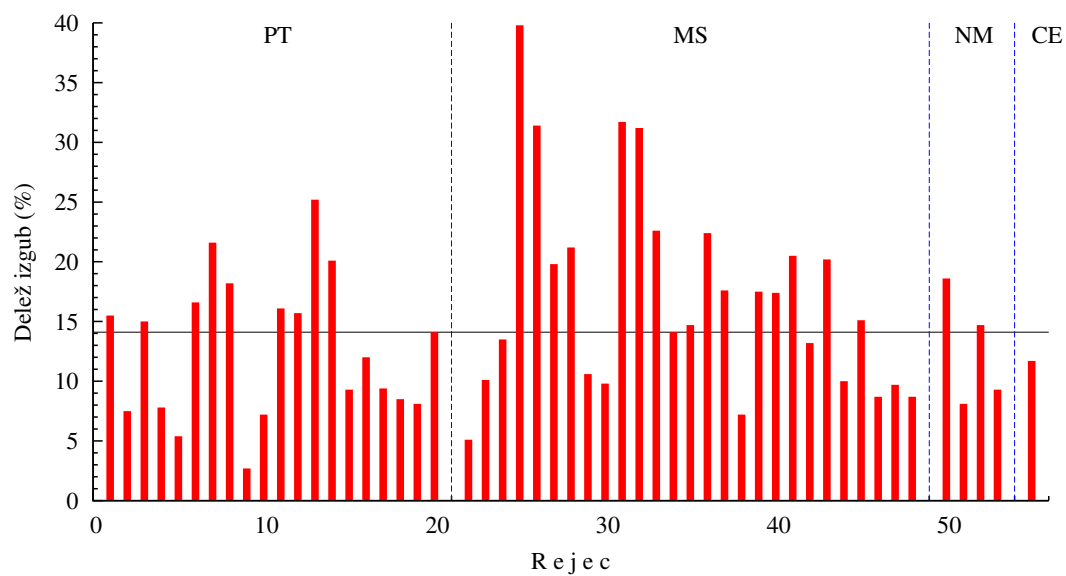
Slika 3.5: Število krmnih dni na živorojenega pujska in starost mladic ob pravitvi na kmetijah v Sloveniji v letu 2016



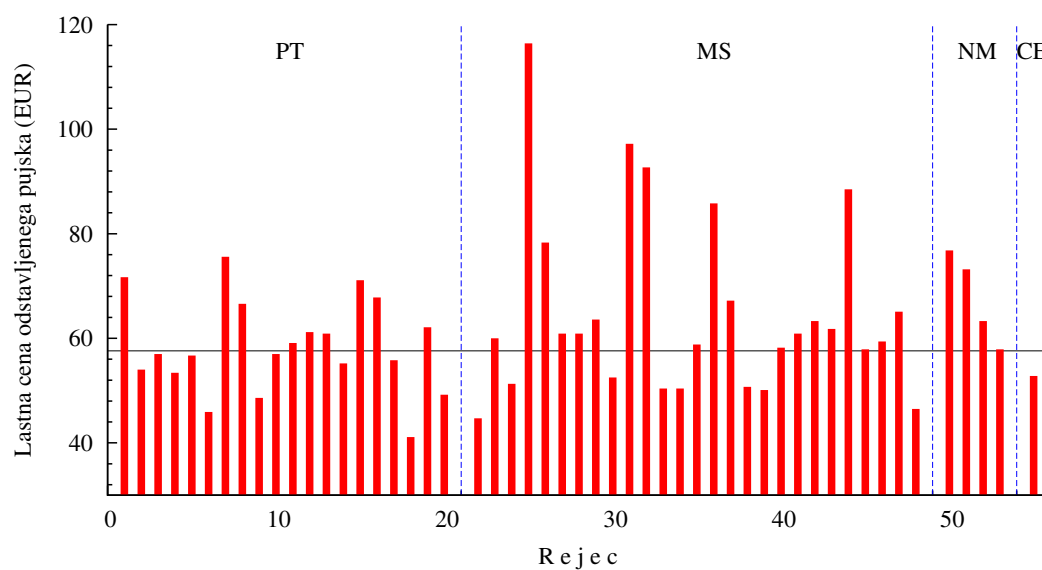
Slika 3.6: Število krmnih dni na živorojenega pujska in doba med pravitvama na kmetijah v Sloveniji v letu 2016



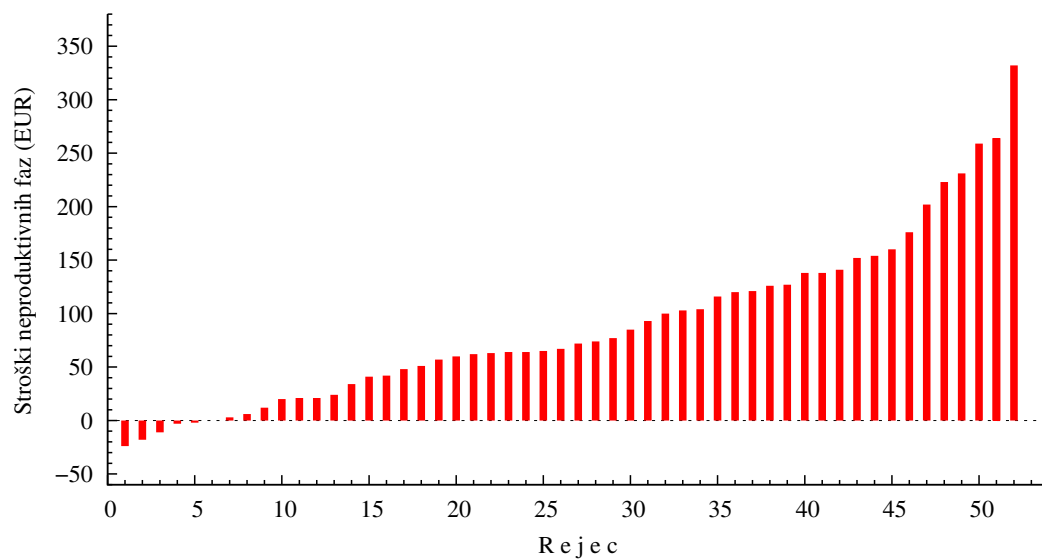
Slika 3.7: Delež pregonitev in doba od pripusta do pregonitve na kmetijah v Sloveniji v letu 2016



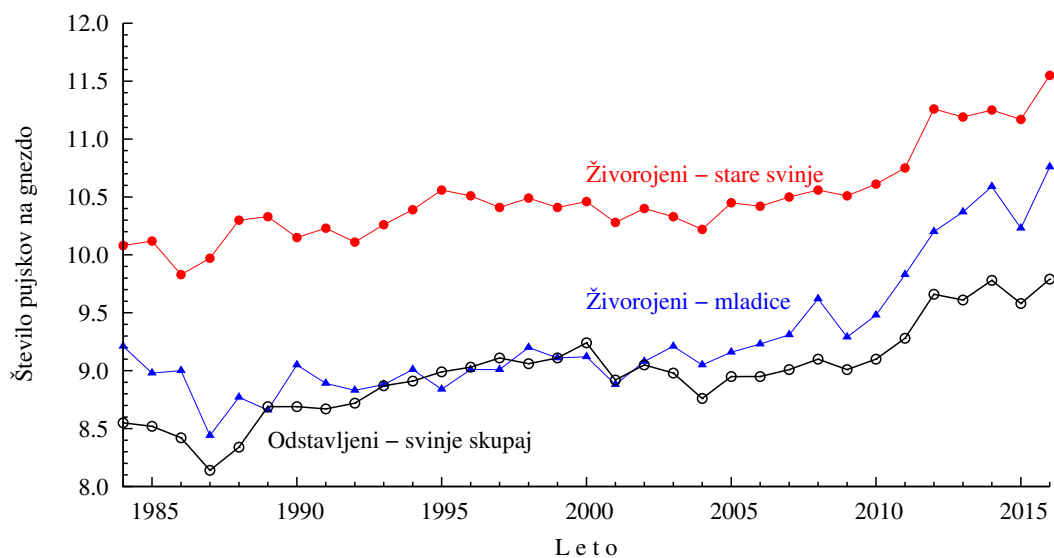
Slika 3.8: Delež izgubljenih pujskov na kmetijah po zavodih v Sloveniji v letu 2016



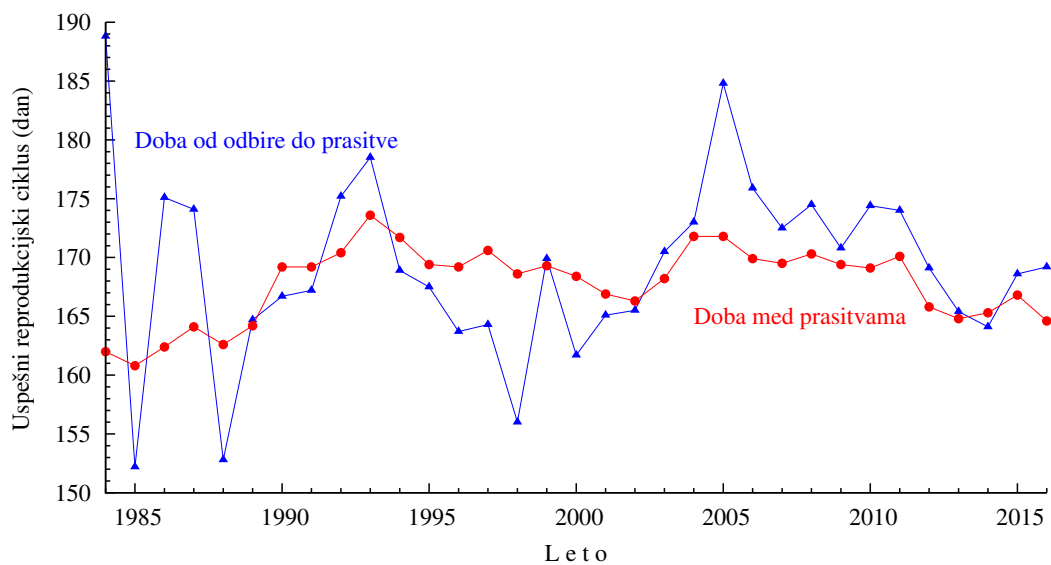
Slika 3.9: Lastna cena odstavljenega pujska v EUR na kmetijah v Sloveniji v letu 2016



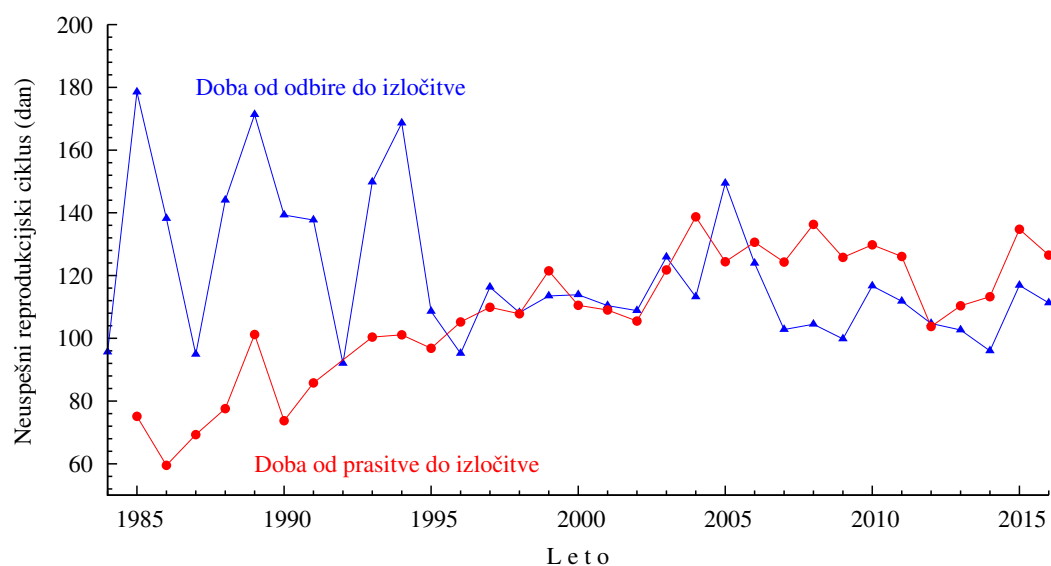
Slika 3.10: Dodatni stroški neproduktivnih faz na gnezdo v EUR na kmetijah v Sloveniji v letu 2016



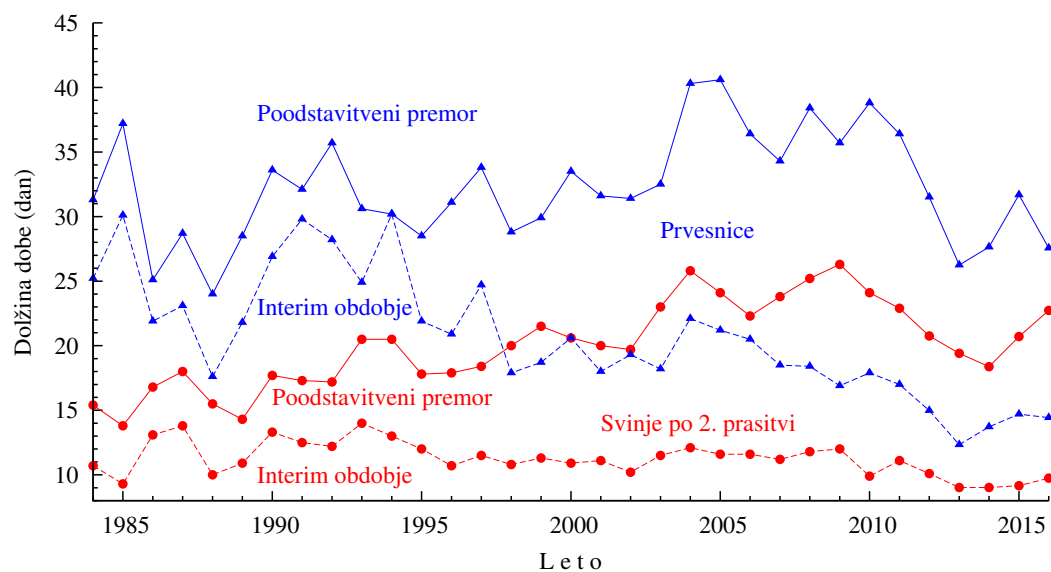
Slika 3.11: Število živorajenih in odstavljenih pujskov na gnezdo pri mladica in starih svinjah na kmetijah v Sloveniji po letih



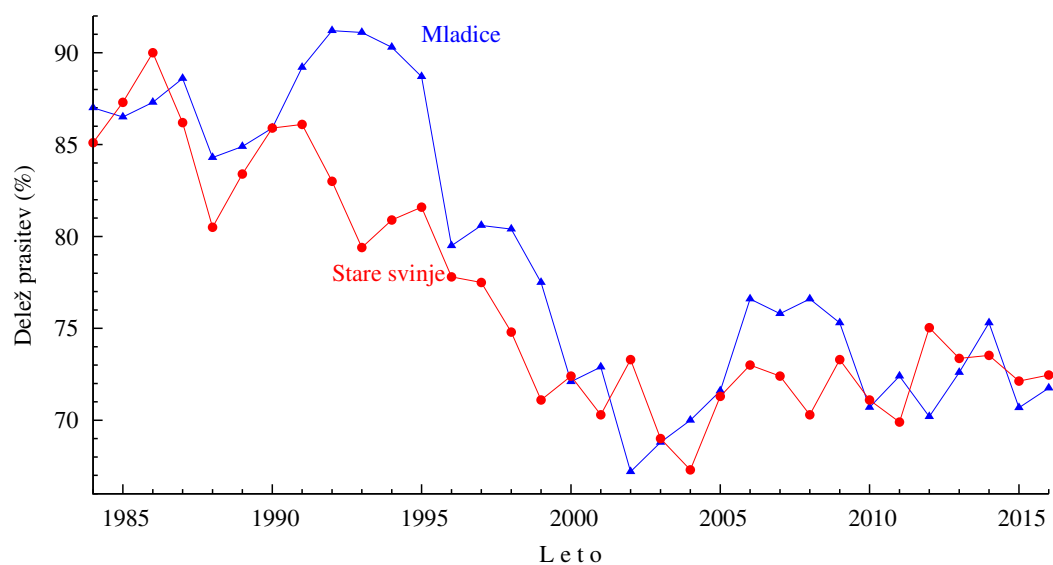
Slika 3.12: Dolžina uspešnega reprodukcijskega ciklusa pri mladica in starih svinjah na kmetijah v Sloveniji po letih



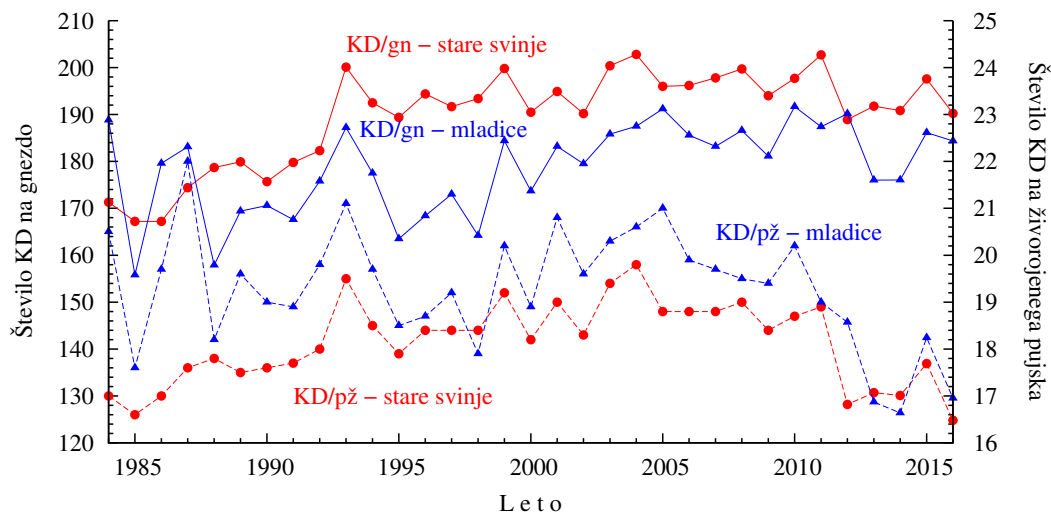
Slika 3.13: Dolžina neuspešnega reprodukcijskega ciklusa na kmetijah v Sloveniji po letih



Slika 3.14: Dolžina poodstavitvenega premora in interim obdobja pri prvesnicah in svinjah po 2. prasitvi na kmetijah v Sloveniji po letih



Slika 3.15: Delež prasičev pri mladících in starih svinjah na kmetijah v Sloveniji po letih



Slika 3.16: Število krmnih dni na gnezdo pri mladících (KD/gn - mladice) in starih svinjah (KD/gn - stare svinje) ter na živorojenega pujska pri mladících (KD/pž - mladice) in starih svinjah (KD/pž - stare svinje) na kmetijah v Sloveniji po letih