
Oddelek za zootehniko

Groblje 3, Domžale

Tel.: 01-3203-920

Fax.: 01-7241-005

ANALIZA PLODNOSTI SVINJ NA KMETIJAH

ZA PRVO POLLETJE 2016

Dokument št. 12-1/2017

VODENJE REPRODUKCIJE NA ZAVODIH:

Mag. Darja PREVALNIK

Mag. Marjeta ŽENKO

Mag. Andrej KASTELIC

Mag. Sašo SEVER

OBDELAVA IN OCENA REZULTATOV:

Prof. dr. Milena KOVAČ

Doc. dr. Špela MALOVRH

Janja URANKAR, univ. dipl. inž. zoot.

Karmen LOŽAR, dipl. inž. zoot.

Irena ULE

Meta MARUŠIČ

Stanka PAVLIN

DOMŽALE, april 2017

Kazalo

1 Primerjava plodnosti na kmetijah v letu 2016	5
1.1 Velikost gnezda	5
1.2 Analiza pripustov	7
1.3 Analiza reprodukcijskega ciklusa	13
1.4 Analiza izločitev	25
2 Kmetije skupaj po letih	27
2.1 Velikost gnezda	27
2.2 Analiza pripustov	28
2.3 Analiza reprodukcijskega ciklusa	31
2.4 Interim obdobje in poodstavitveni premor	35
2.5 Analiza izločitev	37
3 Grafični prikaz rezultatov plodnosti	39

Slike

3.1	Število živorojenih pujskov pri mladicah na kmetijah po zavodih v Sloveniji v letu 2016	39
3.2	Število živorojenih pujskov pri starih svinjah na kmetijah po zavodih v Sloveniji v letu 2016	39
3.3	Število živorojenih pujskov na gnezdo in starost mladic ob pravitvi na kmetijah v Sloveniji v letu 2016	40
3.4	Število živorojenih pujskov na gnezdo in doba med pravitvama na kmetijah v Sloveniji v letu 2016	40
3.5	Število krmnih dni na živorojenega pujska in starost mladic ob pravitvi na kmetijah v Sloveniji v letu 2016	41
3.6	Število krmnih dni na živorojenega pujska in doba med pravitvama na kmetijah v Sloveniji v letu 2016	41
3.7	Delež pregonitev in doba od pripusta do pregonitve na kmetijah v Sloveniji v letu 2016	42
3.8	Delež izgubljenih pujskov na kmetijah po zavodih v Sloveniji v letu 2016	42
3.9	Lastna cena odstavljenega pujska v EUR na kmetijah v Sloveniji v letu 2016	43
3.10	Dodatni stroški neproduktivnih faz na gnezdo v EUR na kmetijah v Sloveniji v letu 2016	43
3.11	Število živorojenih in odstavljenih pujskov na gnezdo pri mladicah in starih svinjah na kmetijah v Sloveniji po letih	44
3.12	Dolžina uspešnega reprodukcijskega ciklusa pri mladicah in starih svinjah na kmetijah v Sloveniji po letih	44
3.13	Dolžina neuspešnega reprodukcijskega ciklusa na kmetijah v Sloveniji po letih	45
3.14	Dolžina poodstavitvenega premora in interim obdobja pri pravesnicah in svinjah po 2. pravitvi na kmetijah v Sloveniji po letih	45
3.15	Delež prasitev pri mladicah in starih svinjah na kmetijah v Sloveniji po letih	46
3.16	Število krmnih dni na gnezdo pri mladicah (KD/gn - mladice) in starih svinjah (KD/gn - stare svinje) ter na živorojenega pujska pri mladicah (KD/pž - mladice) in starih svinjah (KD/pž - stare svinje) na kmetijah v Sloveniji po letih	46

Oznake

DOP	doba od odbire do prasiatve
DMP	doba med prasiatvama
IO	interim obdobje
PP	podstavitveni premor
DOI	doba od odbire do izločitve
DI	doba od prasiatve do izločitve
DPI	doba od pripusta do izločitve
DPP	doba od pripusta do pregonitve
kDMP	korigirana doba med prasiatvama
kDOP	korigirana doba od odbire do prasiatve
G_S	število gnezd na svinjo v proizvodnem obdobju
G_L	število gnezd na svinjo letno
$P_{\dot{Z}}$	število živorojenih pujskov
P_O	število odstavljenih pujskov
KD	krmni dnevi
PF	produktivne faze
št.	število
Sk.	skupaj
gn.	gneздо
prip. (pr.)	pripust
pras.	prasiatve
Izl.	izločitev, izločenih
Usp.	uspešni
Lakt.	laktacija
Preg.	pregonitev

Šifrant izločitev

8	izostanek bukanja
9	nebreje-nepregonjene
10	večkratna pregonitev

Poglavje 1

Primerjava plodnosti na kmetijah v letu 2016

1.1 Velikost gnezda

Tabela 1.1: Velikost gnezda na kmetijah

Rejec	MLADICE			STARE SVINJE						SKUPAJ		
	Št. pras.	DOP (dni)	$P_{\bar{z}}$ /gn.	Št. pras.	DMP (dni)	Lakt. (dni)	IO (dni)	PP (dni)	$P_{\bar{z}}$ /gn.	Št. pras.	$P_{O/}$ gn.	Izgube (%)
30019	2	153.0	12.00	2	162.5	29.0	14.5	14.5	8.00	4	9.25	7.5
30023	8	221.1	9.63	36	179.6	37.6	17.7	26.2	10.97	44	8.77	18.2
30037	6	166.2	10.67	34	165.2	37.8	8.1	11.2	10.74	40	10.15	5.4
30065	0			18	168.9	31.1	20.7	20.7	13.44	18	11.33	15.7
30077	42	198.1	11.71	60	168.8	30.6	7.3	21.4	12.23	102	11.05	8.1
30152	5	247.6	10.20	91	166.4	27.0	7.8	22.6	10.62	96	10.19	3.8
30504	10	158.5	13.10	76	157.6	32.1	7.1	9.5	13.11	86	10.78	17.7
30511	5	131.4	11.20	13	201.7	31.7	23.1	54.2	13.00	18	10.28	17.8
30745	10	161.7	11.10	26	178.7	30.4	9.7	31.3	10.69	36	9.42	12.9
40002	5	159.8	12.40	25	163.4	35.8	8.0	9.2	11.52	30	11.27	3.4
40005	3	127.3	9.33	47	173.3	34.9	9.3	21.0	11.00	50	9.70	11.0
40017	14	167.7	11.93	43	166.0	33.6	6.8	15.9	12.79	57	10.96	12.8
40164	5	141.4	9.80	21	166.1	32.9	9.9	18.7	11.48	26	9.42	15.5
40222	16	170.7	12.25	37	156.1	35.0	5.2	6.5	13.59	53	10.15	23.0
40267	4	170.3	10.25	41	169.1	29.7	5.5	23.1	11.56	45	9.40	17.9
40504	11	224.5	11.36	26	202.3	43.0	11.9	44.9	10.65	37	10.30	5.2
40545	8	203.6	11.88	33	195.5	32.6	37.1	46.7	11.18	41	10.24	9.5
40620	8	140.9	10.88	69	159.0	30.5	6.0	12.8	10.94	77	10.00	8.6
40649	2	122.0	7.00	23	155.4	28.8	6.2	10.2	13.04	25	11.84	5.7
40825	10	185.1	10.10	23	170.5	41.3	12.3	13.2	10.87	33	9.88	7.1
31007	11	177.2	11.82	28	157.9	35.5	5.9	6.6	12.11	39	11.62	3.4
31025	6	183.8	10.33	18	165.3	32.8	15.2	16.6	11.28	24	9.88	10.6
31026	6	218.5	12.17	53	163.6	35.2	8.0	12.3	12.11	59	10.41	14.1
31059	1	217.0	15.00	7	178.0	37.7	7.0	24.9	11.00	8	6.25	45.7
31060	15	144.1	11.53	20	184.3	31.9	7.4	37.9	12.70	35	8.63	29.3
31084	5	285.6	10.60	25	160.4	31.3	9.4	15.3	10.88	30	9.13	15.7
31301	34	146.1	9.79	123	160.4	24.0	11.2	20.3	11.29	157	8.66	21.0
31303	15	232.5	11.93	57	175.5	33.3	15.8	26.4	12.39	72	10.51	14.5
31304	4		10.75	24	165.8	31.4	9.9	19.0	9.46	28	8.82	8.5
31305	25	164.7	9.76	131	160.8	25.1	8.4	19.5	11.17	156	9.90	9.5
31306	3	117.0	10.33	8	186.5	36.5	31.8	34.6	12.50	11	8.64	27.5
31307	10	221.1	11.20	31	160.5	35.7	7.2	10.9	10.84	41	8.85	19.0
31309	12	152.3	12.00	46	157.4	32.8	6.9	8.8	13.80	58	10.17	24.3
31311	4		9.00	30	166.6	34.0	6.4	18.1	12.47	34	10.15	15.9
31312	15	165.9	10.87	38	169.9	31.4	12.9	23.1	11.92	53	10.45	10.1
31313	0			29	203.4	44.1	25.4	44.5	10.24	29	7.93	22.6
31314	9	167.6	12.11	43	169.0	34.9	9.0	18.3	11.81	52	9.75	17.8
31316	12	132.9	9.42	36	164.3	30.2	6.1	19.2	10.86	48	9.50	9.5
31353	9	138.1	9.33	32	159.1	30.6	12.3	12.9	12.50	41	10.17	13.8
31358	19	151.1	9.47	28	168.5	25.9	10.4	28.5	10.14	47	8.34	15.5
31387	11	173.2	11.18	42	173.5	43.7	11.7	13.4	11.71	53	10.11	12.8
31388	0			22	177.9	33.5	6.8	30.4	11.91	22	10.05	15.6

Rejec	MLADICE			STARE SVINJE						SKUPAJ		
	Št. pras.	DOP (dni)	$P_Z/$ gn.	Št. pras.	DMP (dni)	Lakt. (dni)	IO (dni)	PP (dni)	$P_Z/$ gn.	Št. pras.	$P_O/$ gn.	Izgube (%)
31419	1	216.0	13.00	13	184.8	28.6	12.6	41.9	9.77	14	9.00	10.0
31541	11	193.6	13.00	52	169.5	30.4	12.8	24.0	12.54	63	10.84	14.1
31620	5	141.0	11.60	21	155.1	30.6	5.2	8.6	13.14	26	10.69	16.8
31738	6	176.2	10.00	22	166.9	37.9	6.3	13.5	10.73	28	8.43	20.3
31984	14	132.6	10.07	27	170.8	29.1	9.8	26.1	11.70	41	10.37	7.0
41638	22	227.9	10.91	75	167.5	26.7	8.4	25.2	12.01	97	10.44	11.2
32001	2	144.5	11.00	15	183.3	28.0	28.3	39.3	10.60	17	8.71	18.2
32003	4	208.3	11.00	6	214.3	30.7	61.2	67.3	10.83	10	10.10	7.3
32007	4	121.3	11.00	8	187.5	42.8	9.5	30.8	10.13	12	8.67	16.8
32010	13	169.7	10.00	27	158.4	26.3	8.2	16.9	11.78	40	10.18	9.2
33310	7	209.1	11.57	66	164.0	31.4	10.6	16.7	12.23	73	10.85	10.8
Sk.	489	175.5	10.93	1947	167.8	31.6	10.4	20.3	11.67	2436	9.97	13.5

1.2 Analiza pripustov

Tabela 1.2: Analiza pripustov mladic na kmetijah

Rejec	S K U P A J							PRVI PRIPUST				DRUGI IN VIŠJI			
	Št. pr.	Usp. pr. (%)	Izl. po pr. (%)	Preg. (%)	DPI (dni)	DPP (dni)	P _Z /pr.	Št. pr.	Prvi (%)	Usp. (%)	P _Z /pr.	Št. pr.	≥2 (%)	Usp. (%)	P _Z /pr.
30019	13	92.3		7.7		24.0		12	92.3	91.7		1	7.7	100.0	
30023	14	35.7	14.3	42.9	31.5	45.8	3.4	8	57.1	37.5	3.3	6	42.9	33.3	3.5
30037	84	77.4	4.8	17.9	38.0	35.3	8.3	68	81.0	85.3	9.1	16	19.1	43.8	
30065	0							0				0			
30077	54	75.9	3.7	20.4	75.0	28.3	8.9	42	77.8	78.6	9.5	12	22.2	66.7	7.0
30152	6	83.3		16.7		58.0	8.5	5	83.3	80.0	7.6	1	16.7	100.0	13.0
30504	11	90.9		9.1		31.0	11.9	10	90.9	90.0	12.1	1	9.1	100.0	10.0
30511	0							0				0			
30745	7	100.0					10.7	7	100.0	100.0	10.7	0			
40002	54	92.6	5.6	1.9	30.0	16.0	11.5	43	79.6	97.7	12.1	11	20.4	72.7	
40005	0							0				0			
40017	22	72.7	18.2	9.1	144.3	32.5	8.9	19	86.4	79.0	9.7	3	13.6	33.3	3.7
40164	106	79.2	5.7	15.1	52.0	30.1	8.1	89	84.0	79.8	8.2	17	16.0	76.5	
40222	27	51.9	7.4	40.7	68.0	44.2	6.2	20	74.1	50.0	5.6	7	25.9	57.1	8.1
40267	43	93.0	2.3	4.7	63.0	46.5	9.5	41	95.4	95.1	9.2	2	4.7	50.0	6.0
40504	14	50.0	7.1	28.6	38.0	44.8	5.5	10	71.4	50.0	5.9	4	28.6	50.0	4.5
40545	10	70.0		30.0		117.3	8.3	10	100.0	70.0	8.3	0			
40620	8	100.0					10.9	8	100.0	100.0	10.9	0			
40649	0							0				0			
40825	25	64.0	8.0	28.0	47.5	23.0	6.5	17	68.0	58.8	6.2	8	32.0	75.0	7.2
31007	17	88.2		11.8		63.0	10.3	15	88.2	86.7	9.9	2	11.8	100.0	13.0
31025	11	45.5		45.5		56.6	4.9	8	72.7	50.0	5.6	3	27.3	33.3	3.0
31026	7	85.7	14.3		83.0		10.4	5	71.4	100.0	12.2	2	28.6	50.0	6.0
31059	2	50.0		50.0		204.0	7.5	2	100.0	50.0	7.5	0			
31060	22	63.6	13.6	22.7	178.7	57.0	7.2	19	86.4	63.2	7.0	3	13.6	66.7	8.7
31084	6	83.3		16.7		104.0	8.8	5	83.3	80.0	8.0	1	16.7	100.0	13.0
31301	39	71.8	2.6	25.6	124.0	63.8	7.4	34	87.2	73.5	7.4	5	12.8	60.0	6.8
31303	20	75.0		10.0		98.0	9.0	16	80.0	81.3	9.7	4	20.0	50.0	6.0
31304	2	100.0					11.0	2	100.0	100.0	11.0	0			
31305	36	69.4	2.8	25.0	206.0	66.3	6.8	25	69.4	68.0	6.8	11	30.6	72.7	6.7
31306	32	50.0	37.5	12.5	97.3	52.8	5.2	31	96.9	51.6	5.3	1	3.1		
31307	9	100.0					11.4	9	100.0	100.0	11.4	0			
31309	56	83.9	5.4	10.7	31.3	34.0	10.1	43	76.8	81.4	9.4	13	23.2	92.3	12.0
31311	4	100.0					9.0	4	100.0	100.0	9.0	0			
31312	21	71.4	19.1	9.5	130.5	43.0	7.8	19	90.5	68.4	7.5	2	9.5	100.0	10.0
31313	1							1	100.0			0			
31314	34	70.6	20.6	8.8	102.7	28.7	8.6	27	79.4	74.1	8.9	7	20.6	57.1	7.1
31316	143	77.6	12.6	9.8	73.4	23.8	7.3	122	85.3	77.9	6.7	21	14.7	76.2	8.9
31353	0							0				0			
31358	3	33.3	33.3	33.3	84.0	39.0	2.0	2	66.7	50.0	3.0	1	33.3		
31387	11	81.8	18.2		81.5		9.6	11	100.0	81.8	9.6	0			
31388	0							0				0			
31419	2	50.0		50.0		218.0	6.5	0				2	100.0	50.0	6.5
31541	5	40.0	20.0	40.0	55.0	35.5	5.4	2	40.0	50.0	6.0	3	60.0	33.3	5.0
31620	1	100.0					16.0	0				1	100.0	100.0	16.0
31738	8	87.5	12.5		141.0		9.0	8	100.0	87.5	9.0	0			
31984	0							0				0			
41638	61	36.1	16.4	45.9	114.2	62.3	3.9	28	45.9	53.6	6.0	33	54.1	21.2	2.2
32001	2	100.0					11.0	2	100.0	100.0	11.0	0			
32003	9	77.8	11.1		150.0		8.6	9	100.0	77.8	8.6	0			

Rejec	S K U P A J							PRVI PRIPUST				DRUGI IN VIŠJI			
	Št. pr.	Usp. pr. (%)	Izl. po pr. (%)	Preg. (%)	DPI (dni)	DPP (dni)	P _z /pr.	Št. pr.	Prvi (%)	Usp. (%)	P _z /pr.	Št. pr.	≥2 (%)	Usp. (%)	P _z /pr.
32007	4	100.0					11.0	4	100.0	100.0	11.0	0			
32010	49	55.1	6.1	34.7	61.0	25.9	5.5	31	63.3	45.2	4.8	18	36.7	72.2	6.6
33310	9	77.8		22.2		28.0	9.0	6	66.7	66.7	7.3	3	33.3	100.0	12.3
Sk.	1134	72.2	9.0	17.6	88.2	46.4	8.0	900	79.4	76.0	8.5	234	20.6	57.7	6.4

Tabela 1.3: Analiza pripustov starih svinj na kmetijah

Rejec	S K U P A J							PRVI PRIPUST				DRUGI IN VIŠJI			
	Št. prip.	Usp. prip. (%)	Izl. po prip. (%)	Preg. (%)	DPI (dni)	DPP (dni)	$P_{\bar{z}}$ / prip.	Št. prip.	Prvi (%)	Usp. (%)	$P_{\bar{z}}$ / prip.	Št. prip.	≥ 2 (%)	Usp. (%)	$P_{\bar{z}}$ / prip.
30019	5	40.0	40.0		50.5		3.2	5	100.0	40.0	3.2	0			
30023	47	78.7	4.3	14.9	81.5	51.0	8.5	40	85.1	87.5	9.5	7	14.9	28.6	2.9
30037	51	68.6	7.8	23.5	94.5	24.7	7.5	38	74.5	79.0	8.5	13	25.5	38.5	4.5
30065	21	81.0	14.3		132.3		11.0	21	100.0	81.0	11.0	0			
30077	93	67.7	9.7	22.6	86.4	32.9	8.2	65	69.9	70.8	8.7	28	30.1	60.7	6.9
30152	127	74.0	5.5	20.5	91.4	48.8	8.0	97	76.4	75.3	8.2	30	23.6	70.0	7.3
30504	98	91.8	3.1	5.1	27.7	32.2	11.9	89	90.8	93.3	12.0	9	9.2	77.8	11.2
30511	30	43.3	6.7	46.7	117.5	91.0	5.5	20	66.7	35.0	4.6	10	33.3	60.0	7.2
30745	62	38.7		61.3		37.0	4.2	29	46.8	51.7	5.7	33	53.2	27.3	2.9
40002	33	72.7	6.1	18.2	73.0	51.5	8.4	31	93.9	77.4	8.9	2	6.1		
40005	67	70.2	10.5	17.9	96.0	42.0	7.7	52	77.6	71.2	7.5	15	22.4	66.7	8.5
40017	57	73.7	8.8	14.0	65.4	49.8	9.4	49	86.0	77.6	10.1	8	14.0	50.0	5.4
40164	33	66.7	9.1	24.2	58.7	72.3	7.5	29	87.9	69.0	7.6	4	12.1	50.0	7.0
40222	46	69.6	6.5	23.9	58.7	42.7	9.3	40	87.0	77.5	10.3	6	13.0	16.7	2.7
40267	73	57.5	5.5	37.0	56.3	42.9	6.7	51	69.9	58.8	6.7	22	30.1	54.6	6.8
40504	41	63.4	9.8	19.5	70.3	50.0	6.8	30	73.2	60.0	6.3	11	26.8	72.7	7.9
40545	33	87.9	3.0	6.1	60.0	31.0	9.7	28	84.9	85.7	9.1	5	15.2	100.0	13.4
40620	92	72.8	4.4	22.8	165.5	22.9	8.0	70	76.1	75.7	8.4	22	23.9	63.6	6.6
40649	28	85.7	3.6	10.7	60.0	30.7	11.1	25	89.3	88.0	11.4	3	10.7	66.7	9.0
40825	35	62.9	17.1	20.0	57.0	23.6	6.9	27	77.1	77.8	8.5	8	22.9	12.5	1.5
31007	34	76.5	14.7	8.8	42.6	24.7	9.2	30	88.2	86.7	10.4	4	11.8		
31025	25	68.0	12.0	20.0	54.3	65.0	7.6	22	88.0	72.7	8.2	3	12.0	33.3	3.7
31026	66	81.8	4.6	13.6	63.7	42.2	9.9	57	86.4	84.2	10.0	9	13.6	66.7	9.0
31059	16	56.3	6.3	37.5	50.0	87.3	6.2	13	81.3	61.5	6.6	3	18.8	33.3	4.3
31060	37	54.1	10.8	35.1	159.0	55.2	6.9	23	62.2	52.2	6.3	14	37.8	57.1	7.8
31084	28	89.3		10.7		70.0	9.7	26	92.9	92.3	10.0	2	7.1	50.0	5.5
31301	177	69.5	8.5	21.5	95.7	39.1	7.9	137	77.4	78.1	9.0	40	22.6	40.0	4.2
31303	74	74.3	2.7	17.6	54.5	100.9	9.2	62	83.8	75.8	9.4	12	16.2	66.7	8.3
31304	31	80.7	6.5	12.9	69.5	44.0	7.7	25	80.7	84.0	7.9	6	19.4	66.7	6.7
31305	139	84.2	3.6	12.2	113.4	63.2	9.5	117	84.2	83.8	9.4	22	15.8	86.4	9.9
31306	10	80.0		20.0		21.5	10.0	9	90.0	77.8	10.1	1	10.0	100.0	9.0
31307	37	81.1	8.1	5.4	107.3	40.5	8.8	33	89.2	81.8	9.1	4	10.8	75.0	6.5
31309	52	76.9	9.6	11.5	88.4	27.8	10.7	46	88.5	80.4	11.2	6	11.5	50.0	6.7
31311	38	84.2	2.6	10.5	195.0	33.3	10.5	31	81.6	90.3	11.6	7	18.4	57.1	5.9
31312	55	69.1	12.7	16.4	87.7	50.2	8.2	43	78.2	72.1	8.6	12	21.8	58.3	6.6
31313	36	80.6	8.3	8.3	233.7	36.7	8.2	31	86.1	80.7	8.1	5	13.9	80.0	8.6
31314	61	70.5	3.3	26.2	123.0	46.5	8.2	48	78.7	68.8	8.0	13	21.3	76.9	8.8
31316	61	67.2	6.6	26.2	83.0	37.8	6.9	38	62.3	60.5	6.8	23	37.7	78.3	7.0
31353	34	91.2	5.9	2.9	112.5	20.0	11.0	33	97.1	90.9	10.9	1	2.9	100.0	17.0
31358	43	72.1	7.0	18.6	95.0	54.8	6.9	36	83.7	75.0	7.5	7	16.3	57.1	3.9
31387	51	84.3	7.8	7.8	83.8	23.8	9.8	46	90.2	87.0	10.1	5	9.8	60.0	7.4
31388	32	68.8	9.4	21.9	112.0	84.9	8.2	20	62.5	75.0	8.9	12	37.5	58.3	7.0
31419	27	48.2	14.8	37.0	163.3	45.2	4.7	17	63.0	58.8	5.9	10	37.0	30.0	2.8
31541	77	75.3	10.4	13.0	203.5	48.4	9.6	64	83.1	76.6	10.0	13	16.9	69.2	7.8
31620	28	67.9	7.1	21.4	110.5	74.8	8.6	26	92.9	69.2	8.7	2	7.1	50.0	7.5
31738	31	74.2	12.9	12.9	99.5	73.3	7.9	27	87.1	74.1	8.3	4	12.9	75.0	5.0
31984	43	60.5	7.0	30.2	56.7	32.4	7.2	26	60.5	73.1	8.6	17	39.5	41.2	5.0
41638	127	59.1	17.3	23.6	96.5	68.6	7.1	91	71.7	69.2	8.4	36	28.4	33.3	3.9
32001	25	60.0	8.0	32.0	203.0	29.9	6.4	18	72.0	61.1	6.4	7	28.0	57.1	6.3
32003	10	50.0	10.0	40.0	366.0	81.3	5.5	7	70.0	57.1	6.0	3	30.0	33.3	4.3
32007	15	60.0	13.3	26.7	90.0	31.3	6.3	9	60.0	77.8	7.8	6	40.0	33.3	4.0
32010	39	69.2	10.3	20.5	89.3	41.3	8.2	29	74.4	72.4	8.3	10	25.6	60.0	7.6

Rejec	S K U P A J							PRVI PRIPUST				DRUGI IN VIŠJI			
	Št. prip.	Usp. prip. (%)	Izl. po prip. (%)	Preg. (%)	DPI (dni)	DPP (dni)	P _z /prip.	Št. prip.	Prvi (%)	Usp. (%)	P _z /prip.	Št. prip.	≥2 (%)	Usp. (%)	P _z /prip.
33310	85	80.0	3.5	15.3	40.3	35.4	9.7	74	87.1	79.7	9.7	11	12.9	81.8	10.2
Sk.	2758	70.7	8.7	19.7	99.2	47.5	8.2	2179	79.0	75.1	8.8	579	21.0	53.9	6.1

Tabela 1.4: Distribucija pregonitev na kmetijah

Rejec	MLADICE					STARE SVINJE				
	Št. preg.	DPP (dni)	do 25. dne (%)	25-40 dni (%)	po 40. dnevu (%)	Št. preg.	DPP (dni)	do 25. dne (%)	25-40 dni (%)	po 40. dnevu (%)
30019	1	24.0	100.0	0.0	0.0	0				
30023	6	45.8	33.3	33.3	33.3	7	51.0	14.3	28.6	57.1
30037	15	35.3	46.7	20.0	33.3	12	24.7	83.3	8.3	8.3
30065	0					0				
30077	11	28.3	54.6	36.4	9.1	21	32.9	52.4	14.3	33.3
30152	1	58.0	0.0	0.0	100.0	26	48.8	23.1	19.2	57.7
30504	1	31.0	0.0	100.0	0.0	5	32.2	40.0	40.0	20.0
30511	0					14	91.0	14.3	7.1	78.6
30745	0					38	37.0	39.5	31.6	29.0
40002	1	16.0	100.0	0.0	0.0	6	51.5	33.3	16.7	50.0
40005	0					12	42.0	58.3	16.7	25.0
40017	2	32.5	50.0	0.0	50.0	8	49.8	12.5	25.0	62.5
40164	16	30.1	68.8	12.5	18.8	8	72.3	0.0	0.0	100.0
40222	11	44.2	18.2	27.3	54.6	11	42.7	9.1	18.2	72.7
40267	2	46.5	50.0	0.0	50.0	27	42.9	37.0	29.6	33.3
40504	4	44.8	25.0	0.0	75.0	8	50.0	37.5	12.5	50.0
40545	3	117.3	0.0	33.3	66.7	2	31.0	50.0	0.0	50.0
40620	0					21	22.9	76.2	23.8	0.0
40649	0					3	30.7	33.3	33.3	33.3
40825	7	23.0	85.7	14.3	0.0	7	23.6	85.7	14.3	0.0
31007	2	63.0	0.0	0.0	100.0	3	24.7	66.7	33.3	0.0
31025	5	56.6	0.0	40.0	60.0	5	65.0	20.0	40.0	40.0
31026	0					9	42.2	44.4	33.3	22.2
31059	1	204.0	0.0	0.0	100.0	6	87.3	33.3	0.0	66.7
31060	5	57.0	20.0	20.0	60.0	13	55.2	30.8	0.0	69.2
31084	1	104.0	0.0	0.0	100.0	3	70.0	0.0	33.3	66.7
31301	10	63.8	30.0	10.0	60.0	38	39.1	44.7	21.1	34.2
31303	2	98.0	0.0	0.0	100.0	13	100.9	0.0	7.7	92.3
31304	0					4	44.0	25.0	25.0	50.0
31305	9	66.3	0.0	55.6	44.4	17	63.2	23.5	17.7	58.8
31306	4	52.8	75.0	0.0	25.0	2	21.5	100.0	0.0	0.0
31307	0					2	40.5	0.0	50.0	50.0
31309	6	34.0	83.3	0.0	16.7	6	27.8	83.3	0.0	16.7
31311	0					4	33.3	75.0	0.0	25.0
31312	2	43.0	0.0	0.0	100.0	9	50.2	33.3	11.1	55.6
31313	0					3	36.7	66.7	0.0	33.3
31314	3	28.7	33.3	33.3	33.3	16	46.5	31.3	31.3	37.5
31316	14	23.8	71.4	28.6	0.0	16	37.8	43.8	18.8	37.5
31353	0					1	20.0	100.0	0.0	0.0
31358	1	39.0	0.0	100.0	0.0	8	54.8	25.0	12.5	62.5
31387	0					4	23.8	75.0	25.0	0.0
31388	0					7	84.9	0.0	0.0	100.0
31419	1	218.0	0.0	0.0	100.0	10	45.2	20.0	20.0	60.0
31541	2	35.5	0.0	100.0	0.0	10	48.4	40.0	10.0	50.0
31620	0					6	74.8	16.7	33.3	50.0
31738	0					4	73.3	25.0	0.0	75.0
31984	0					13	32.4	76.9	7.7	15.4
41638	28	62.3	10.7	0.0	89.3	30	68.6	6.7	0.0	93.3
32001	0					8	29.9	62.5	12.5	25.0
32003	0					4	81.3	25.0	0.0	75.0
32007	0					4	31.3	75.0	0.0	25.0
32010	17	25.9	70.6	11.8	17.7	8	41.3	37.5	25.0	37.5

Rejec	MLADICE					STARE SVINJE				
	Št. preg.	DPP (dni)	do 25. dne (%)	25-40 dni (%)	po 40. dnevu (%)	Št. preg.	DPP (dni)	do 25. dne (%)	25-40 dni (%)	po 40. dnevu (%)
33310	2	28.0	50.0	50.0	0.0	13	35.4	53.9	7.7	38.5
Sk.	200	46.4	39.0	18.5	42.5	542	47.5	37.6	16.8	45.6

1.3 Analiza reprodukcijskega ciklusa

Tabela 1.5: Starost mladic ob pravitvi in število krmnih dni na živorojenega pujska pri mladicah na kmetijah

Rejec	Št. pras.	Starost ob		do 360 dni (%)	361-420 dni (%)	≥421 dni (%)	Izl. (%)	pred prip. (%)	po	Starost ob izl.	kDOP (dni)	KD/ $P_{\bar{z}}$
30019	0						22.2	100.0		247.0	119.9	
30023	3	251.3	386.3	33.4	33.3	33.3					186.3	18.6
30037	6	210.0	362.5	66.6	16.7	16.7	16.9	72.7	27.3	324.7	187.2	15.8
30065	0											
30077	38	277.5	400.7	15.8	60.5	23.7	11.6	20.0	80.0	374.0	223.6	18.9
30152	5	318.6	447.6	0.0	40.0	60.0	16.7	100.0		309.0	269.4	26.4
30504	14	232.8	351.4	78.6	21.4	0.0					151.4	12.2
30511	5	215.8	331.4	100.0	0.0	0.0					131.4	11.7
30745	5	253.8	369.0	60.0	40.0	0.0					169.0	13.0
40002	4	241.5	360.8	50.0	50.0	0.0	25.9	35.7	64.3	254.6	167.7	12.4
40005	9	209.6	326.7	100.0	0.0	0.0	10.0		100.0	335.0	141.7	14.7
40017	20	258.1	378.3	55.0	35.0	10.0	16.0	25.0	75.0	386.3	215.6	17.5
40164	5	226.2	341.4	80.0	20.0	0.0	12.5	50.0	50.0	290.3	170.4	17.4
40222	15	247.4	384.8	46.7	33.3	20.0	21.1		100.0	362.5	228.1	19.6
40267	0						13.6	90.9	9.1	249.1	157.7	
40504	10	305.9	436.3	20.0	30.0	50.0	7.7		100.0	424.0	258.7	21.9
40545	5	302.8	430.0	0.0	60.0	40.0	14.3	100.0		294.0	248.8	20.7
40620	4	220.5	334.5	100.0	0.0	0.0	42.9	100.0		279.0	193.8	19.4
40649	4	216.0	332.8	100.0	0.0	0.0					132.8	16.1
40825	10	254.5	385.1	30.0	60.0	10.0					175.1	17.3
31007	15	244.1	368.3	33.3	60.0	6.7					168.3	14.4
31025	8	253.9	404.3	25.0	37.5	37.5					204.3	20.2
31026	3	225.7	342.7	100.0	0.0	0.0					142.7	15.3
31059	1	300.0	417.0		100.0						217.0	14.5
31060	9	213.4	347.2	77.8	11.1	11.1	37.5	55.6	44.4	335.4	220.6	20.1
31084	2	311.0	425.5	0.0	50.0	50.0					225.5	30.1
31301	24	233.4	361.5	62.5	29.2	8.3	7.7		100.0	459.0	183.1	17.9
31303	13	284.2	404.9	7.7	69.2	23.1					204.9	17.9
31304	0											
31305	18	227.1	368.7	72.2	16.7	11.1	10.0		100.0	434.0	194.7	20.9
31306	1	212.0	330.0	100.0	0.0	0.0	52.0	23.1	76.9	368.5	355.4	44.4
31307	4	280.5	394.8	25.0	50.0	25.0	50.0	100.0		293.3	293.8	30.1
31309	14	222.7	351.3	78.6	14.3	7.1	11.6	81.8	18.2	228.6	160.2	13.0
31311	0											
31312	10	252.2	375.2	30.0	50.0	20.0	23.1	33.3	66.7	418.0	240.6	23.8
31313	0											
31314	12	236.4	366.4	58.3	25.0	16.7	41.3	52.6	47.4	315.5	225.5	21.7
31316	7	221.9	347.1	71.4	28.6	0.0	20.5	44.1	55.9	281.1	160.2	18.1
31353	9	223.2	337.9	77.8	22.2	0.0	9.1	100.0		287.0	147.6	16.2
31358	14	254.1	369.0	50.0	42.9	7.1					169.0	17.3
31387	11	262.5	378.7	27.3	63.6	9.1	59.3	75.0	25.0	252.8	255.6	22.1
31388	0											
31419	2	224.0	375.0	50.0	50.0	0.0	33.3		100.0	738.0	444.0	31.7
31541	9	264.1	379.3	11.1	88.9	0.0					179.3	13.9
31620	6	213.8	333.2	100.0	0.0	0.0					133.2	10.8
31738	5	232.2	347.6	80.0	20.0	0.0					147.6	13.7
31984	9	218.4	339.4	77.8	22.2	0.0					139.4	14.4
41638	29	272.8	422.1	6.9	48.3	44.8	9.5		100.0	514.5	265.5	24.3
32001	2	229.0	344.5	100.0	0.0	0.0					144.5	13.1
32003	4	291.8	408.3	0.0	75.0	25.0	16.7		100.0	530.5	260.1	23.7
32007	4	206.5	321.3	100.0	0.0	0.0					121.3	11.0

Rejec	Št. pras.	Starost ob		do 360 dni (%)	361-420 dni (%)	≥421 dni (%)	Izl. (%)	pred prip. (%)	po	Starost ob izl.	kDOP (dni)	KD/ $P_{\bar{z}}$
		1.prip. pras.	pras.									
32010	9	224.7	366.8	55.6	33.3	11.1	22.2	37.5	62.5	281.4	183.3	16.8
33310	6	273.7	399.8	0.0	83.3	16.7					199.8	17.4
Sk.	422	249.2	376.1	47.1	37.7	15.2	17.7	51.3	48.7	308.8	186.1	16.9

Tabela 1.6: Doba med prasiatvama in število krmnih dni na pujska na kmetijah

Rejec	Št. pras.	DMP (dni)	do 160 dni (%)	161-200 dni (%)	≥201 dni (%)	Izl. (%)	DI (dni)	kDMP (dni)	G_L	P_Z / leto	KD/ P_Z
30019	2	162.5	50.0	50.0	0.0	66.7	75.0	312.5	1.17	9.4	39.1
30023	37	177.0	35.1	43.2	21.6	11.4	231.0	208.2	1.75	19.0	19.2
30037	32	172.8	43.8	46.9	9.4	22.0	151.2	215.3	1.70	17.5	20.9
30065	14	164.5	42.9	50.0	7.1	25.0	133.6	212.2	1.72	23.5	15.6
30077	57	163.2	71.9	21.1	7.0	23.0	95.2	191.6	1.91	22.8	16.1
30152	85	161.6	75.3	12.9	11.8	11.5	98.8	174.4	2.09	22.0	16.6
30504	94	157.6	84.0	16.0	0.0	8.7	62.8	163.6	2.23	28.9	12.6
30511	16	232.1	18.8	25.0	56.3	23.1	107.2	272.3	1.34	15.6	23.4
30745	30	172.8	60.0	20.0	20.0	13.9	177.8	202.4	1.80	19.3	18.9
40002	32	167.2	37.5	59.4	3.1	19.5	71.1	189.3	1.93	21.9	16.7
40005	39	165.6	41.0	53.8	5.1	16.0	149.8	196.3	1.86	20.2	18.1
40017	44	163.3	68.2	25.0	6.8	21.7	126.1	200.5	1.82	23.2	15.7
40164	27	167.4	77.8	7.4	14.8	25.0	82.4	194.9	1.87	21.5	16.9
40222	37	154.4	94.6	5.4	0.0	14.0	119.8	173.9	2.10	27.9	13.1
40267	39	169.2	66.7	12.8	20.5	22.0	84.9	193.2	1.89	22.2	16.4
40504	20	182.5	20.0	60.0	20.0	31.3	93.2	229.1	1.59	16.7	21.8
40545	25	182.5	20.0	56.0	24.0	13.8	107.8	199.8	1.83	19.7	18.6
40620	66	160.4	72.7	22.7	4.5	9.6	196.1	181.2	2.01	22.5	16.2
40649	24	154.6	87.5	8.3	4.2	17.2	43.2	163.6	2.23	28.8	12.7
40825	23	173.1	13.0	73.9	13.0	28.1	110.0	216.2	1.69	18.8	19.4
31007	31	157.2	77.4	22.6	0.0	32.6	49.2	181.0	2.02	24.4	15.0
31025	19	174.0	68.4	21.1	10.5	24.0	58.7	192.5	1.90	22.7	16.1
31026	47	169.0	48.9	44.7	6.4	16.1	85.6	185.4	1.97	23.7	15.4
31059	11	189.5	54.5	18.2	27.3	20.0	86.7	213.1	1.71	19.7	18.5
31060	16	182.1	43.8	25.0	31.3	33.3	165.5	264.9	1.38	17.0	21.5
31084	21	160.0	85.7	9.5	4.8	19.2	108.8	185.9	1.96	21.4	17.1
31301	113	155.6	80.5	13.3	6.2	20.7	100.7	184.1	1.98	22.5	16.2
31303	52	183.2	59.6	15.4	25.0	1.8	94.0	185.0	1.97	24.3	15.0
31304	27	161.1	77.8	14.8	7.4	10.0	113.7	173.7	2.10	19.6	18.6
31305	120	159.9	77.5	15.0	7.5	8.4	119.3	170.8	2.14	23.9	15.3
31306	9	166.6	44.4	44.4	11.1	25.0	93.7	197.8	1.85	21.8	16.8
31307	35	159.2	68.6	28.6	2.9	12.2	108.6	178.7	2.04	23.1	15.8
31309	40	158.1	75.0	25.0	0.0	28.6	71.3	186.6	1.96	27.1	13.5
31311	30	161.7	83.3	13.3	3.3	9.1	106.7	172.4	2.12	26.2	14.0
31312	39	167.3	74.4	12.8	12.8	23.5	136.8	209.4	1.74	20.6	17.7
31313	27	184.3	11.1	74.1	14.8	14.3	264.8	233.3	1.56	15.8	23.1
31314	44	170.3	59.1	31.8	9.1	15.4	158.0	199.0	1.83	21.1	17.2
31316	37	162.4	70.3	27.0	2.7	17.0	98.6	187.3	1.95	20.8	17.6
31353	31	158.3	87.1	6.5	6.5	16.2	54.3	168.8	2.16	26.8	13.6
31358	30	158.1	80.0	10.0	10.0	8.8	202.0	182.6	2.00	20.0	18.3
31387	44	173.0	4.5	88.6	6.8	22.8	80.2	196.7	1.86	21.7	16.9
31388	21	176.7	76.2	4.8	19.0	12.5	155.0	198.9	1.84	21.2	17.3
31419	14	179.1	57.1	7.1	35.7	26.3	178.4	242.8	1.50	13.8	26.4
31541	49	160.8	75.5	20.4	4.1	19.4	152.3	200.8	1.82	23.7	15.4
31620	22	161.9	86.4	9.1	4.5	30.3	111.3	212.5	1.72	22.1	16.6
31738	20	165.9	50.0	45.0	5.0	23.1	160.0	213.9	1.71	18.7	19.5
31984	22	164.9	63.6	31.8	4.5	28.1	112.1	218.1	1.67	18.8	19.4
41638	63	166.0	82.5	3.2	14.3	20.3	178.1	211.2	1.73	21.1	17.4
32001	16	181.8	50.0	25.0	25.0	15.8	191.0	217.6	1.68	17.6	20.7
32003	5	228.8	0.0	60.0	40.0	28.6	89.0	264.4	1.38	14.9	24.5
32007	7	170.9	14.3	85.7	0.0	30.0	141.7	231.6	1.58	15.4	23.8
32010	27	158.7	74.1	22.2	3.7	27.0	113.9	200.9	1.82	21.3	17.2

Rejec	Št. pras.	DMP (dni)	do 160 dni (%)	161-200 dni (%)	≥201 dni (%)	Izl. (%)	DI (dni)	kDMP (dni)	G_L	P_Z / leto	KD/ P_Z
33310	65	164.1	66.2	24.6	9.2	18.5	53.7	177.9	2.05	24.9	14.6
Sk.	1901	165.8	65.2	25.2	9.6	19.6	114.8	194.9	1.87	21.7	16.8

Tabela 1.7: Velikost gnezda ob rojstvu, gospodarnost prireje pujskov in delež letne obnove črede svinj na kmetijah

Rejec	Št. pras.	Št. izl.	$P_Z/\text{gn.}$	KD/ gn.	G_L	KD/ P_Z	Št. svinj v čredi	Remont (%)	G_S
30019	2	6	8.00	162.7	2.24	20.3			
30023	40	5	10.78	206.6	1.77	19.2			
30037	38	20	10.53	197.6	1.85	18.8			
30065	14	5	13.64	212.2	1.72	15.6			
30077	95	22	11.89	204.4	1.79	17.2			
30152	90	12	10.49	179.7	2.03	17.1			
30504	108	9	12.88	162.0	2.25	12.6			
30511	21	6	11.52	238.7	1.53	20.7			
30745	35	5	11.03	197.7	1.85	17.9			
40002	36	22	11.58	177.3	2.06	15.3			
40005	48	9	10.65	186.1	1.96	17.5			
40017	64	17	12.63	205.2	1.78	16.3			
40164	32	19	11.25	177.2	2.06	15.8			
40222	52	10	12.81	189.5	1.93	14.8			
40267	39	22	11.77	170.4	2.14	14.5			
40504	30	11	10.93	238.9	1.53	21.9			
40545	30	5	10.97	207.9	1.76	19.0			
40620	70	10	11.13	181.9	2.01	16.4			
40649	28	5	12.25	159.2	2.29	13.0			
40825	33	9	10.82	200.6	1.82	18.6			
31007	46	15	11.96	176.9	2.06	14.8			
31025	27	6	11.41	196.0	1.86	17.2			
31026	50	9	11.88	182.8	2.00	15.4			
31059	12	3	11.83	213.4	1.71	18.0			
31060	25	17	11.84	243.5	1.50	20.6			
31084	23	5	10.61	189.3	1.93	17.9			
31301	137	32	11.17	184.0	1.98	16.5			
31303	65	1	12.17	189.0	1.93	15.5			
31304	27	3	9.33	173.7	2.10	18.6			
31305	138	13	10.92	173.9	2.10	15.9			
31306	10	16	11.40	287.9	1.27	25.3			
31307	39	11	11.15	195.6	1.87	17.5			
31309	54	27	13.43	168.8	2.16	12.6			
31311	30	3	12.33	172.4	2.12	14.0			
31312	49	15	11.47	215.8	1.69	18.8			
31313	27	5	10.11	233.3	1.56	23.1			
31314	56	27	11.30	209.1	1.75	18.5			
31316	44	42	10.36	166.1	2.20	16.0			
31353	40	7	11.68	164.0	2.23	14.1			
31358	44	3	9.93	178.3	2.05	18.0			
31387	55	29	11.64	208.4	1.75	17.9			
31388	21	3	11.52	198.9	1.84	17.3			
31419	16	6	9.81	267.9	1.36	27.3			
31541	58	12	13.00	197.5	1.85	15.2			
31620	28	10	12.71	195.5	1.87	15.4			
31738	25	6	10.92	200.6	1.82	18.4			
31984	31	9	10.81	195.3	1.87	18.1			
41638	92	20	11.78	228.3	1.60	19.4			
32001	18	3	10.56	209.5	1.74	19.9			
32003	9	4	10.89	261.6	1.40	24.0			
32007	11	3	10.18	191.5	1.91	18.8			
32010	36	18	11.50	192.2	1.90	16.7			

Rejec	Št. pras.	Št. izl.	$P_Z/$ gn.	KD/ gn.	G_L	KD/ P_Z	Št. svinj v čredi	Remont (%)	G_S
33310	71	15	12.10	179.7	2.03	14.9			
Sk.	2323	671	11.51	192.1	1.90	16.7			

Tabela 1.8: Dolžina laktacije in starostna struktura na kmetijah

Rejec	DOLŽINA LAKTACIJE							P R A S I T V E		
	Lakt. (dni)	do 14 dni (%)	15-19 dni (%)	20-24 dni (%)	25-29 dni (%)	30-34 dni (%)	≥35 dni (%)	prva (%)	2.-7. (%)	≥8 (%)
30019	29.0	0.0	0.0	0.0	16.7	83.3	0.0	60.0	40.0	0.0
30023	36.0	2.3	2.3	0.0	6.8	38.6	50.0	6.4	78.7	14.9
30037	37.7	0.0	0.0	0.0	4.9	24.4	70.7	61.3	27.4	11.3
30065	31.1	0.0	0.0	0.0	10.0	90.0	0.0	0.0	95.0	5.0
30077	30.8	9.5	0.0	0.0	8.1	81.1	1.4	36.8	45.3	17.9
30152	26.7	3.1	0.0	9.4	64.6	22.9	0.0	5.9	63.7	30.4
30504	32.5	0.0	0.0	1.0	18.4	60.2	20.4	12.0	77.7	10.3
30511	30.3	7.7	0.0	0.0	3.8	46.2	42.3	18.8	59.3	21.9
30745	30.9	8.3	0.0	2.8	8.3	58.3	22.2	12.2	36.6	51.2
40002	35.1	2.4	0.0	0.0	12.2	26.8	58.5	56.8	36.9	6.3
40005	34.7	10.0	0.0	8.0	10.0	14.0	58.0	16.7	55.0	28.3
40017	33.4	10.0	3.3	3.3	15.0	28.3	40.0	29.4	56.5	14.1
40164	33.3	0.0	2.8	0.0	16.7	38.9	41.7	69.0	19.8	11.2
40222	34.0	4.7	0.0	0.0	16.3	37.2	41.9	30.6	58.1	11.3
40267	28.4	6.0	2.0	14.0	32.0	28.0	18.0	61.8	32.1	6.1
40504	44.5	0.0	0.0	0.0	3.1	3.1	93.8	28.9	35.5	35.6
40545	32.9	0.0	0.0	0.0	0.0	79.3	20.7	19.4	55.6	25.0
40620	31.1	2.7	1.4	1.4	24.7	50.7	19.2	8.8	78.7	12.5
40649	28.2	3.4	0.0	6.9	65.5	20.7	3.4	12.1	72.7	15.2
40825	41.4	6.3	0.0	0.0	0.0	12.5	81.3	30.4	58.7	10.9
31007	35.0	2.2	0.0	2.2	0.0	54.3	41.3	24.6	67.2	8.2
31025	33.4	4.0	0.0	0.0	8.0	52.0	36.0	24.2	54.6	21.2
31026	35.5	1.8	0.0	1.8	8.9	21.4	66.1	5.1	84.7	10.2
31059	37.9	0.0	0.0	0.0	0.0	20.0	80.0	6.3	68.7	25.0
31060	32.6	8.3	0.0	0.0	12.5	62.5	16.7	50.0	41.7	8.3
31084	31.4	0.0	0.0	0.0	0.0	96.2	3.8	7.1	71.5	21.4
31301	24.6	11.0	2.1	42.1	35.2	9.0	0.7	15.2	70.8	14.0
31303	33.2	1.8	0.0	0.0	5.3	57.9	35.1	20.8	59.8	19.4
31304	31.3	0.0	0.0	0.0	16.7	73.3	10.0	0.0	63.3	36.7
31305	25.4	0.0	0.0	46.6	46.6	1.5	5.3	13.2	69.6	17.2
31306	37.4	0.0	0.0	0.0	0.0	0.0	100.0	67.6	27.0	5.4
31307	36.6	4.9	0.0	0.0	7.3	29.3	58.5	22.6	62.3	15.1
31309	33.1	0.0	0.0	0.0	17.9	53.6	28.6	62.9	35.1	2.0
31311	34.4	3.0	0.0	9.1	9.1	27.3	51.5	0.0	72.7	27.3
31312	32.0	2.0	0.0	0.0	11.8	80.4	5.9	20.3	62.5	17.2
31313	45.1	2.9	0.0	0.0	0.0	17.1	80.0	0.0	85.7	14.3
31314	34.2	1.9	0.0	3.8	1.9	44.2	48.1	46.9	42.9	10.2
31316	30.0	8.5	0.0	0.0	12.8	55.3	23.4	77.9	19.3	2.8
31353	29.9	0.0	0.0	13.5	29.7	43.2	13.5	22.9	66.7	10.4
31358	25.6	2.9	0.0	2.9	94.1	0.0	0.0	29.2	70.8	0.0
31387	43.5	0.0	0.0	1.8	0.0	3.5	94.7	32.1	64.3	3.6
31388	32.9	0.0	0.0	8.3	8.3	54.2	29.2	0.0	83.3	16.7
31419	29.8	0.0	0.0	26.3	26.3	31.6	15.8	13.6	72.8	13.6
31541	29.8	6.5	1.6	3.2	19.4	58.1	11.3	12.7	77.4	9.9
31620	30.5	0.0	0.0	0.0	6.1	93.9	0.0	15.4	56.4	28.2
31738	38.5	0.0	3.8	0.0	0.0	23.1	73.1	16.1	74.2	9.7
31984	27.7	9.4	3.1	6.3	34.4	31.3	15.6	22.0	68.2	9.8
41638	26.7	0.0	0.0	8.9	84.8	6.3	0.0	34.7	39.7	25.6
32001	28.1	10.5	0.0	5.3	15.8	68.4	0.0	9.5	81.0	9.5
32003	30.4	0.0	0.0	0.0	28.6	71.4	0.0	63.2	36.8	0.0
32007	43.3	10.0	0.0	0.0	0.0	0.0	90.0	28.6	64.3	7.1
32010	26.3	2.7	2.7	10.8	81.1	2.7	0.0	49.3	49.3	1.4

Rejec	DOLŽINA LAKTACIJE							P R A S I T V E		
	Lakt. (dni)	do 14 dni (%)	15-19 dni (%)	20-24 dni (%)	25-29 dni (%)	30-34 dni (%)	≥35 dni (%)	prva (%)	2.-7. (%)	≥8 (%)
33310	30.7	3.7	3.7	1.2	16.0	56.8	18.5	6.9	78.2	14.9
Sk.	31.7	3.6	0.7	8.2	23.5	36.6	27.5	31.8	54.9	13.3

Tabela 1.9: Interim obdobje na kmetijah

Rejec	PRVESNICE				STARE SVINJE			
	IO (dni)	do 12 dni (%)	12-40 dni (%)	≥41 dni (%)	IO (dni)	do 12 dni (%)	12-40 dni (%)	≥41 dni (%)
30019	23.0	0.0	100.0	0.0	11.3	75.0	25.0	0.0
30023	40.4	22.2	33.3	44.4	13.2	76.3	15.8	7.9
30037	13.7	53.3	40.0	6.7	8.3	88.9	5.6	5.6
30065	38.7	0.0	33.3	66.7	16.3	22.2	72.2	5.6
30077	14.9	87.5	0.0	12.5	6.1	91.8	8.2	0.0
30152	8.0	85.7	14.3	0.0	9.1	89.2	7.5	3.3
30504	16.6	62.5	37.5	0.0	5.8	95.6	4.4	0.0
30511	30.3	80.0	0.0	20.0	14.8	65.0	20.0	15.0
30745					13.7	75.8	16.1	8.1
40002	5.3	100.0	0.0	0.0	6.8	86.2	10.3	3.4
40005	10.3	83.3	8.3	8.3	11.4	83.6	12.7	3.6
40017	7.2	95.0	5.0	0.0	6.1	97.3	2.7	0.0
40164	7.9	90.0	10.0	0.0	7.6	91.3	4.3	4.3
40222	19.0	33.3	66.7	0.0	5.9	95.0	5.0	0.0
40267	6.8	85.0	15.0	0.0	5.4	100.0	0.0	0.0
40504	8.5	100.0	0.0	0.0	16.9	75.7	2.7	21.6
40545	63.7	0.0	36.4	63.6	35.7	36.4	40.9	22.7
40620	8.3	77.8	22.2	0.0	5.8	94.0	6.0	0.0
40649	5.5	100.0	0.0	0.0	6.5	95.8	4.2	0.0
40825	10.5	83.3	16.7	0.0	13.1	72.4	20.7	6.9
31007	5.0	100.0	0.0	0.0	6.2	96.2	3.8	0.0
31025	46.0	50.0	16.7	33.3	22.5	63.2	26.3	10.5
31026	10.2	81.3	18.8	0.0	8.2	80.0	20.0	0.0
31059	64.5	50.0	0.0	50.0	7.4	100.0	0.0	0.0
31060	8.5	80.0	20.0	0.0	7.7	81.8	18.2	0.0
31084	37.0	0.0	50.0	50.0	7.4	92.3	7.7	0.0
31301	25.0	62.1	17.2	20.7	10.2	85.1	12.2	2.7
31303	29.9	44.4	22.2	33.3	8.7	92.9	1.8	5.4
31304	27.3	37.5	37.5	25.0	8.7	91.3	0.0	8.7
31305	8.6	78.3	21.7	0.0	9.0	90.5	6.9	2.6
31306	65.5	0.0	25.0	75.0	11.7	66.7	33.3	0.0
31307	5.0	100.0	0.0	0.0	9.4	88.9	8.3	2.8
31309	10.7	73.3	26.7	0.0	6.5	97.3	2.7	0.0
31311					6.4	100.0	0.0	0.0
31312	19.4	55.6	22.2	22.2	9.8	95.7	0.0	4.3
31313					26.3	55.6	22.2	22.2
31314	8.0	81.8	18.2	0.0	7.9	92.0	4.0	4.0
31316	5.4	100.0	0.0	0.0	7.1	93.5	6.5	0.0
31353	23.9	66.7	11.1	22.2	7.9	92.0	4.0	4.0
31358	32.0	50.0	0.0	50.0	14.2	82.9	4.9	12.2
31387	18.9	57.1	21.4	21.4	9.6	78.4	21.6	0.0
31388	5.5	100.0	0.0	0.0	7.8	93.3	3.3	3.3
31419	15.3	75.0	0.0	25.0	13.2	60.9	34.8	4.3
31541	34.7	55.0	25.0	20.0	11.7	87.7	3.5	8.8
31620	5.8	100.0	0.0	0.0	5.4	100.0	0.0	0.0
31738	6.8	100.0	0.0	0.0	10.3	88.5	3.8	7.7
31984	19.0	50.0	50.0	0.0	10.5	78.0	19.5	2.4
41638	7.1	95.0	0.0	5.0	13.3	86.9	3.7	9.3
32001	54.7	33.3	33.3	33.3	20.3	45.5	45.5	9.1
32003	130.0	0.0	0.0	100.0	55.8	0.0	66.7	33.3
32007	5.0	100.0	0.0	0.0	12.7	57.1	42.9	0.0
32010	11.3	75.0	25.0	0.0	6.2	91.3	8.7	0.0

Rejec	PRVESNICE				STARE SVINJE			
	IO (dni)	do 12 dni (%)	12-40 dni (%)	≥41 dni (%)	IO (dni)	do 12 dni (%)	12-40 dni (%)	≥41 dni (%)
33310	12.3	79.2	12.5	8.3	9.2	82.0	16.4	1.6
Sk.	18.0	70.8	17.1	12.1	10.1	85.5	10.3	4.2

Tabela 1.10: Poodstavitveni premor na kmetijah

Rejec	PRVESNICE					STARE SVINJE				
	Št. svinj	PP (dni)	do 12 dni (%)	13-60 dni (%)	≥61 dni (%)	Št. svinj	PP (dni)	do 12 dni (%)	13-60 dni (%)	≥61 dni (%)
30019	1	23.0	0.0	100.0	0.0	4	11.3	75.0	25.0	0.0
30023	9	99.6	11.1	11.1	77.8	38	23.5	68.4	18.4	13.2
30037	15	28.3	46.7	40.0	13.3	36	14.6	66.7	33.3	0.0
30065	3	38.7	0.0	100.0	0.0	18	16.3	22.2	77.8	0.0
30077	8	25.4	50.0	37.5	12.5	85	22.9	65.9	21.2	12.9
30152	7	16.7	57.1	42.9	0.0	120	24.6	70.0	15.8	14.2
30504	8	16.6	62.5	37.5	0.0	90	10.0	85.6	12.2	2.2
30511	10	84.7	50.0	0.0	50.0	20	41.4	45.0	35.0	20.0
30745	0					62	76.1	37.1	29.0	33.9
40002	4	5.3	100.0	0.0	0.0	29	9.2	82.8	13.8	3.4
40005	12	35.6	58.3	16.7	25.0	55	20.9	69.1	21.8	9.1
40017	20	28.2	70.0	15.0	15.0	37	17.0	89.2	5.4	5.4
40164	10	17.7	80.0	10.0	10.0	23	19.1	78.3	8.7	13.0
40222	6	66.8	33.3	16.7	50.0	40	9.4	87.5	10.0	2.5
40267	20	28.7	60.0	30.0	10.0	53	22.1	71.7	15.1	13.2
40504	4	28.5	75.0	0.0	25.0	37	46.9	62.2	13.5	24.3
40545	11	74.3	0.0	45.5	54.5	22	44.7	27.2	45.5	27.3
40620	9	8.3	77.8	22.2	0.0	83	14.4	67.5	27.7	4.8
40649	4	5.5	100.0	0.0	0.0	24	11.3	83.3	12.5	4.2
40825	6	67.2	33.3	16.7	50.0	29	19.1	58.6	34.5	6.9
31007	8	5.0	100.0	0.0	0.0	26	14.5	80.8	11.5	7.7
31025	6	46.0	50.0	16.7	33.3	19	26.4	63.2	26.3	10.5
31026	16	13.4	68.8	31.3	0.0	50	13.1	72.0	24.0	4.0
31059	2	64.5	50.0	0.0	50.0	14	29.4	78.6	0.0	21.4
31060	15	37.9	46.7	20.0	33.3	22	34.4	50.0	27.3	22.7
31084	2	37.0	0.0	100.0	0.0	26	14.3	84.7	11.5	3.8
31301	29	47.6	44.9	31.0	24.1	148	27.1	67.6	18.2	14.2
31303	18	44.9	33.4	44.4	22.2	56	22.5	76.8	10.7	12.5
31304	8	68.1	0.0	37.5	62.5	23	9.7	87.0	13.0	0.0
31305	23	20.0	60.9	26.1	13.0	116	20.7	80.2	11.2	8.6
31306	4	71.3	0.0	50.0	50.0	6	11.7	66.7	33.3	0.0
31307	1	5.0	100.0	0.0	0.0	36	13.7	83.4	8.3	8.3
31309	15	16.6	60.0	40.0	0.0	37	9.2	89.2	8.1	2.7
31311	0					38	18.8	81.6	10.5	7.9
31312	9	42.6	55.6	22.2	22.2	46	24.5	73.9	8.7	17.4
31313	0					36	42.5	52.8	27.8	19.4
31314	11	8.0	81.8	18.2	0.0	50	18.3	68.0	24.0	8.0
31316	15	34.9	53.3	26.7	20.0	46	31.5	60.8	19.6	19.6
31353	9	26.1	66.7	11.1	22.2	25	7.9	92.0	8.0	0.0
31358	2	96.0	0.0	50.0	50.0	41	26.6	75.6	12.2	12.2
31387	14	30.0	57.2	35.7	7.1	37	12.2	70.3	29.7	0.0
31388	2	45.0	0.0	50.0	50.0	30	43.0	66.7	10.0	23.3
31419	4	109.3	25.0	0.0	75.0	23	28.4	43.5	39.1	17.4
31541	20	56.1	30.0	50.0	20.0	57	20.6	79.0	7.0	14.0
31620	9	8.3	88.9	11.1	0.0	19	7.5	94.7	5.3	0.0
31738	5	18.4	80.0	0.0	20.0	26	16.4	76.9	15.4	7.7
31984	2	19.0	50.0	50.0	0.0	41	36.0	51.2	31.7	17.1
41638	20	31.3	80.0	0.0	20.0	107	45.1	63.6	2.8	33.6
32001	3	54.7	33.4	33.3	33.3	22	31.2	36.4	50.0	13.6
32003	4	149.8	0.0	0.0	100.0	6	59.5	0.0	66.7	33.3
32007	1	5.0	100.0	0.0	0.0	14	53.6	42.9	21.4	35.7
32010	16	24.9	49.9	43.8	6.3	23	15.8	69.6	26.1	4.3

Rejec	PRVESNICE					STARE SVINJE				
	Št. svinj	PP (dni)	do 12 dni (%)	13-60 dni (%)	≥61 dni (%)	Št. svinj	PP (dni)	do 12 dni (%)	13-60 dni (%)	≥61 dni (%)
33310	24	24.4	50.0	41.7	8.3	61	12.3	78.7	18.0	3.3
Sk.	496	37.4	52.6	26.6	20.8	2262	24.2	69.6	18.2	12.2

1.4 Analiza izločitev

Tabela 1.11: Izločitve svinj na kmetijah

Rejec	MLADICE							STARE SVINJE						
	Št. izl.	DOI (dni)	Izločitve		Vzrok izločitve			Št. izl.	DI (dni)	Izločitve		Vzrok izločitve		
			pred	po pr.	8	9	10			pred	po pr.	9	10	
30019	2	66.5	100.0	0.0	100.0			0						
30023	2	282.0	0.0	100.0			100.0	4	104.5	75.0	25.0			
30037	6	147.2	33.3	66.7	33.3		33.3	8	159.6	37.5	62.5		37.5	
30065	0							5	181.4	20.0	80.0	60.0		
30077	6	145.2	33.3	66.7	16.7	50.0	16.7	12	124.7	41.7	58.3	16.7	33.3	
30152	1	109.0	100.0	0.0	100.0			9	160.6	33.3	66.7	22.2	11.1	
30504	0							8	48.4	75.0	25.0	12.5		
30511	0							3	194.0	33.3	66.7	33.3	33.3	
30745	0							7	321.4	0.0	100.0		100.0	
40002	4	43.3	100.0	0.0				4	99.8	50.0	50.0	25.0	25.0	
40005	1	135.0	0.0	100.0				11	134.7	36.4	63.6	27.3		
40017	5	153.8	60.0	40.0	40.0	20.0	20.0	6	177.8	33.3	66.7	16.7		
40164	10	79.0	50.0	50.0	20.0	40.0	10.0	7	101.3	42.9	57.1	42.9	14.3	
40222	3	170.3	0.0	100.0		33.3	66.7	8	112.4	25.0	75.0	25.0	37.5	
40267	12	38.1	58.3	41.7	25.0	33.3	8.3	7	106.9	42.9	57.1	28.6	28.6	
40504	1	224.0	0.0	100.0			100.0	7	162.3	57.1	42.9	28.6	14.3	
40545	1	94.0	100.0	0.0	100.0			5	63.6	100.0	0.0			
40620	1	99.0	100.0	0.0	100.0			7	94.9	85.7	14.3		14.3	
40649	0							1	42.0	100.0	0.0			
40825	0							10	109.4	30.0	70.0	40.0	30.0	
31007	0							4	36.0	100.0	0.0			
31025	0							5	130.2	40.0	60.0	40.0		
31026	0							9	72.7	77.8	22.2	11.1		
31059	0							4	65.5	75.0	25.0			
31060	2	158.0	50.0	50.0	50.0	50.0		6	196.8	16.7	83.3	50.0	16.7	
31084	0							1	175.0	100.0	0.0			
31301	2	259.0	0.0	100.0			100.0	37	120.6	40.5	59.5		13.5	
31303	0							0						
31304	0							3	96.7	33.3	66.7	33.3		
31305	1	221.0	0.0	100.0		100.0		15	114.9	40.0	60.0	13.3	13.3	
31306	13	161.1	23.1	76.9	23.1	69.2		2	52.5	100.0	0.0			
31307	12	80.5	66.7	33.3	8.3	33.3		10	129.2	60.0	40.0			
31309	18	17.7	83.3	16.7	11.1	5.6		14	81.3	57.1	42.9	7.1		
31311	0							3	208.3	0.0	100.0	33.3	33.3	
31312	5	210.8	20.0	80.0	20.0	60.0		10	149.5	40.0	60.0	20.0	10.0	
31313	0							3	123.3	66.7	33.3			
31314	11	107.6	45.5	54.5	36.4	54.5		10	94.6	70.0	30.0	10.0	10.0	
31316	21	96.0	28.6	71.4	23.8	61.9		8	125.0	50.0	50.0	12.5	12.5	
31353	0							9	72.4	55.6	44.4	11.1		
31358	1		0.0	100.0			100.0	5	151.2	20.0	80.0	20.0	40.0	
31387	6	57.0	83.3	16.7				14	90.6	64.3	35.7		21.4	
31388	1		100.0	0.0				6	213.0	33.3	66.7	16.7	50.0	
31419	0							5	209.6	20.0	80.0	60.0		
31541	1	331.0	0.0	100.0			100.0	6	113.8	83.3	16.7	16.7		
31620	0							2	148.0	0.0	100.0			
31738	1	153.0	0.0	100.0		100.0		6	114.5	50.0	50.0	33.3	16.7	
31984	0							11	118.2	27.3	72.7	27.3	27.3	
41638	8	430.8	0.0	100.0		62.5	37.5	17	173.4	5.9	94.1	47.1	29.4	
32001	1	13.0	0.0	100.0				3	175.0	33.3	66.7	66.7		
32003	1	204.0	0.0	100.0				1	141.0	100.0	0.0			

Rejec	MLADICE							STARE SVINJE					
	Št. izl.	DOI (dni)	Izločitve		Vzrok izločitve			Št. izl.	DI (dni)	Izločitve		Vzrok izločitve	
			pred	po pr.	8	9	10			pred	po pr.	9	10
32007	0							3	176.0	33.3	66.7	33.3	
32010	7	69.3	57.1	42.9	28.6	42.9		12	118.7	41.7	58.3	33.3	8.3
33310	0							4	64.5	50.0	50.0		
Sk.	173	118.0	44.5	55.5	19.7	34.7	10.4	420	129.9	42.4	57.6	16.4	13.8

Poglavje 2

Kmetije skupaj po letih

2.1 Velikost gnezda

Tabela 2.1: Velikost gnezda po letih na kmetijah

Leto	MLADICE			STARE SVINJE						SKUPAJ		
	Št. pras.	DOP (dni)	$P_{\bar{z}}$ /gn.	Št. pras.	DMP (dni)	Lakt. (dni)	IO (dni)	PP (dni)	$P_{\bar{z}}$ /gn.	Št. pras.	P_O /gn.	Izgube (%)
1984	87	188.8	9.21	535	162.0	30.7	12.9	17.5	10.08	622	8.55	14.1
1985	66	152.2	8.98	595	160.8	30.5	11.0	14.9	10.12	661	8.52	14.9
1986	176	175.1	9.00	653	162.4	29.5	14.9	18.3	9.83	829	8.42	12.8
1987	146	174.1	8.44	682	164.1	30.4	15.5	19.2	9.97	828	8.14	16.0
1988	184	152.8	8.77	555	162.6	32.1	11.4	16.0	10.30	739	8.34	15.9
1989	182	164.7	8.66	630	164.2	31.9	14.2	17.3	10.33	812	8.69	12.7
1990	167	166.7	9.05	792	169.2	34.7	15.4	18.9	10.15	959	8.69	12.8
1991	170	167.2	8.89	739	169.2	35.5	15.1	18.8	10.23	909	8.67	13.1
1992	157	175.2	8.83	768	170.4	36.0	14.8	18.7	10.11	925	8.72	11.8
1993	254	178.5	8.88	685	173.6	36.7	16.4	21.8	10.26	939	8.87	10.3
1994	349	168.9	9.01	1023	171.7	35.5	15.0	21.0	10.39	1372	8.91	11.2
1995	608	167.5	8.84	2038	169.4	35.5	14.2	18.6	10.56	2646	8.99	11.6
1996	588	163.7	9.01	1801	169.2	35.1	12.7	18.9	10.51	2389	9.03	10.9
1997	545	164.3	9.01	2220	170.6	34.7	14.1	20.7	10.41	2765	9.11	10.1
1998	932	156.0	9.20	2650	168.6	34.6	12.0	18.9	10.49	3582	9.06	10.7
1999	779	169.9	9.11	2913	169.3	33.8	12.5	20.3	10.41	3692	9.11	10.1
2000	747	161.7	9.12	2994	168.4	32.7	12.3	20.3	10.46	3741	9.24	9.4
2001	891	165.1	8.88	2895	166.9	31.7	12.0	19.9	10.28	3786	8.92	10.4
2002	920	165.5	9.08	3191	166.3	31.4	11.8	19.6	10.40	4111	9.05	10.5
2003	1010	170.5	9.21	3570	168.2	31.5	12.6	21.4	10.33	4580	8.98	10.9
2004	1065	173.0	9.05	3946	171.8	32.7	13.3	24.0	10.22	5011	8.76	12.2
2005	1060	184.8	9.16	4090	171.8	33.1	13.2	23.4	10.45	5150	8.95	12.1
2006	1054	175.9	9.23	4126	169.9	32.9	12.7	21.8	10.42	5180	8.95	12.1
2007	1054	172.5	9.31	4189	169.5	32.6	12.4	21.4	10.50	5243	9.01	12.2
2008	943	174.5	9.62	4126	170.3	32.7	12.1	22.1	10.56	5069	9.10	12.4
2009	956	170.8	9.29	4187	169.4	32.8	11.7	20.9	10.51	5143	9.01	12.4
2010	960	174.4	9.48	3674	169.1	32.1	11.4	21.4	10.61	4634	9.10	12.4
2011	1074	174.0	9.83	3786	170.1	32.3	11.8	21.8	10.75	4860	9.28	12.0
2012	1002	169.1	10.20	4040	165.8	31.0	10.6	19.3	11.26	5042	9.66	12.6
2013	1117	165.4	10.37	4127	164.8	31.1	9.5	18.1	11.19	5244	9.61	12.7
2014	1056	164.1	10.59	4210	165.3	31.4	9.7	18.3	11.25	5266	9.78	12.1
2015	789	168.6	10.23	4000	166.8	31.7	9.8	18.9	11.17	4789	9.58	13.0
2016	489	175.5	10.93	1947	167.8	31.6	10.4	20.3	11.67	2436	9.97	13.5

2.2 Analiza pripustov

Tabela 2.2: Analiza pripustov mladic po letih kmetijah

Leto	S K U P A J							PRVI PRIPUST				DRUGI IN VIŠJI			
	Št. pr.	Usp. pr. (%)	Izl. po pr. (%)	Preg. (%)	DPI (dni)	DPP (dni)	$P_{\bar{z}}$ /pr.	Št. pr.	Prvi (%)	Usp. (%)	$P_{\bar{z}}$ /pr.	Št. pr.	≥ 2 (%)	Usp. (%)	$P_{\bar{z}}$ /pr.
1984	100	87.0		12.0		60.3	8.0	90	90.0	90.0	8.3	10	10.0	60.0	5.3
1985	74	86.5	2.7	9.5	77.0	79.1	7.7	67	90.5	86.6	7.7	7	9.5	85.7	8.0
1986	204	87.3	3.4	9.3	92.1	39.0	7.9	176	86.3	86.4	7.8	28	13.7	92.9	8.6
1987	167	88.6	5.4	5.4	72.6	52.4	7.4	158	94.6	88.6	7.4	9	5.4	88.9	7.2
1988	217	84.3	4.2	10.6	68.4	41.1	7.4	192	88.5	87.5	7.7	25	11.5	60.0	5.1
1989	219	84.9	3.2	11.9	96.7	55.9	7.3	186	84.9	86.6	7.5	33	15.1	75.8	6.7
1990	192	85.9	2.1	11.5	83.0	34.9	7.8	171	89.1	88.9	8.0	21	10.9	61.9	6.1
1991	194	89.2	2.1	8.8	62.0	38.7	7.9	176	90.7	90.3	7.9	18	9.3	77.8	7.8
1992	170	91.2	0.6	8.2	100.0	27.9	8.1	151	88.8	92.1	8.1	19	11.2	84.2	8.0
1993	281	91.1	2.1	6.4	203.8	61.8	8.1	264	93.9	93.2	8.3	17	6.1	58.8	5.8
1994	741	90.3	1.5	6.9	123.3	44.9	8.1	691	93.3	91.2	8.2	50	6.7	109.8	7.1
1995	2067	88.7	2.9	8.1	79.1	38.0	7.7	1916	92.7	89.4	7.6	151	7.3	80.8	7.8
1996	3384	79.5	6.3	14.0	57.2	34.4	6.8	2916	86.2	80.6	6.8	468	13.8	72.4	6.7
1997	3810	80.6	6.6	12.7	56.6	30.9	7.3	3322	87.2	82.0	7.4	488	12.8	71.5	6.7
1998	4605	80.4	7.3	12.1	73.7	35.9	7.4	4072	88.4	81.4	7.4	533	11.6	73.0	7.2
1999	3143	77.5	10.6	11.5	78.7	38.1	7.1	2757	87.7	79.3	7.3	386	12.3	65.5	5.9
2000	3003	72.1	10.8	16.9	68.3	37.6	6.5	2479	82.6	75.2	6.7	524	17.4	57.3	5.6
2001	3094	72.9	10.5	16.4	72.9	39.1	6.5	2584	83.5	74.2	6.4	510	16.5	66.1	6.4
2002	2904	67.2	10.7	16.8	72.4	42.4	6.1	2419	83.3	68.4	6.1	485	16.7	61.4	6.0
2003	3208	68.8	10.9	18.7	88.5	40.9	6.4	2601	81.1	71.3	6.5	607	18.9	58.2	5.7
2004	3009	70.0	9.1	19.9	77.6	42.6	6.3	2410	80.1	72.4	6.4	599	19.9	60.4	5.7
2005	3033	71.6	9.2	18.7	91.4	39.9	6.6	2446	80.6	73.8	6.8	587	19.4	62.5	5.8
2006	3163	76.6	8.4	14.4	83.0	42.5	7.1	2709	85.6	78.9	7.3	454	14.4	63.2	6.0
2007	2804	75.8	8.3	15.3	79.7	47.3	7.1	2361	84.2	77.7	7.1	443	15.8	65.7	6.4
2008	2613	76.6	7.9	15.2	75.3	44.0	7.4	2189	83.8	78.7	7.6	424	16.2	66.3	6.5
2009	2615	75.3	8.4	15.7	83.5	46.3	7.0	2185	83.6	78.8	7.3	430	16.4	57.4	5.3
2010	2629	70.7	9.9	18.3	79.3	46.6	6.7	2181	83.0	74.2	6.9	448	17.0	53.3	5.4
2011	2278	72.4	9.7	16.9	81.2	46.0	7.2	1860	81.7	74.9	7.3	418	18.3	61.5	6.4
2012	2333	70.3	10.7	18.3	77.2	40.5	7.2	1901	81.5	72.8	7.4	432	18.5	59.3	6.3
2013	2605	72.7	10.8	16.1	72.6	43.5	7.6	2183	83.8	75.0	7.8	422	16.2	60.4	6.6
2014	2447	75.4	8.9	15.2	78.2	38.5	8.0	2045	83.6	77.6	8.2	402	16.4	63.9	6.9
2015	2190	70.7	10.1	18.9	88.3	42.8	7.2	1817	83.0	72.2	7.3	373	17.0	63.3	6.7
2016	1134	72.2	9.0	17.6	88.2	46.4	8.0	900	79.4	76.0	8.5	234	20.6	57.7	6.4

Tabela 2.3: Analiza pripustov starih svinj po letih na kmetijah

Leto	S K U P A J							PRVI PRIPUST				DRUGI IN VIŠJI			
	Št. prip.	Usp. prip. (%)	Izl. po prip. (%)	Preg. (%)	DPI (dni)	DPP (dni)	$P_{\bar{z}}$ / prip.	Št. prip.	Prvi (%)	Usp. (%)	$P_{\bar{z}}$ / prip.	Št. prip.	≥ 2 (%)	Usp. (%)	$P_{\bar{z}}$ / prip.
1984	632	85.1	3.3	11.1	77.2	38.1	8.6	556	88.0	87.2	8.9	76	12.0	75.0	7.3
1985	679	87.3	3.1	8.5	55.0	36.5	8.8	602	88.7	89.9	9.1	77	11.3	68.8	7.0
1986	723	90.0	2.2	7.5	60.8	35.3	8.8	639	88.4	90.0	8.8	84	11.6	90.5	9.1
1987	806	86.2	4.2	8.9	78.7	33.5	8.6	718	89.1	88.0	8.8	88	10.9	71.6	7.3
1988	678	80.5	5.7	12.8	54.8	32.4	8.3	585	86.3	83.3	8.6	93	13.7	63.4	6.5
1989	755	83.4	5.7	10.2	66.2	32.0	8.7	672	89.0	86.5	9.0	83	11.0	59.0	6.0
1990	914	85.9	3.5	9.9	66.4	33.5	8.7	819	89.6	89.0	9.0	95	10.4	59.0	5.9
1991	861	86.1	4.5	8.8	73.5	38.4	8.8	773	89.8	88.4	9.1	88	10.2	65.9	6.6
1992	941	83.0	4.9	11.3	73.5	39.4	8.4	832	88.4	85.7	8.7	109	11.6	62.4	6.0
1993	861	79.4	6.3	14.2	81.4	42.3	8.2	737	85.6	81.9	8.4	124	14.4	64.5	6.4
1994	1379	80.9	4.6	13.9	80.7	43.3	8.5	1169	84.8	84.3	8.9	210	15.2	61.9	6.4
1995	1812	81.6	6.0	12.0	84.4	46.2	8.6	1602	88.4	83.3	8.7	210	11.6	68.8	7.2
1996	2310	77.8	7.1	14.4	89.4	43.1	8.2	1976	85.5	80.3	8.4	334	14.5	62.9	6.7
1997	2892	77.5	6.5	15.6	91.0	43.8	8.1	2457	85.0	79.5	8.3	435	15.0	66.0	7.0
1998	3538	74.8	7.3	17.2	93.1	44.8	7.9	2949	83.4	78.3	8.2	589	16.6	57.9	6.1
1999	4095	71.1	10.1	17.7	98.9	44.9	7.4	3339	81.5	74.8	7.8	756	18.5	55.2	5.7
2000	4131	72.4	7.5	19.2	87.8	42.8	7.6	3301	79.9	75.5	7.9	830	20.1	60.1	6.3
2001	4089	70.3	9.5	19.7	84.4	44.0	7.2	3308	80.9	73.2	7.6	781	19.1	58.0	5.8
2002	4357	73.3	8.4	17.8	89.3	43.0	7.6	3553	81.5	76.3	8.0	804	18.5	60.1	6.2
2003	5178	69.0	9.1	21.0	109.1	47.6	7.1	4138	79.9	72.8	7.5	1040	20.1	53.5	5.5
2004	5820	67.3	9.3	22.3	104.5	48.9	6.9	4509	77.5	71.5	7.3	1311	22.5	52.7	5.4
2005	5729	71.3	8.1	19.9	94.8	49.6	7.5	4547	79.4	75.3	7.9	1182	20.6	56.3	5.9
2006	5641	73.0	8.4	17.7	106.5	48.7	7.6	4579	81.2	75.9	7.9	1062	18.8	60.5	6.3
2007	5765	72.4	8.0	18.6	109.4	52.4	7.6	4705	81.6	76.2	8.0	1060	18.4	55.7	5.8
2008	5851	70.3	9.1	19.6	100.7	57.8	7.4	4704	80.4	74.5	7.9	1147	19.6	53.0	5.6
2009	5723	73.3	7.6	18.1	107.0	58.8	7.7	4670	81.6	77.6	8.2	1053	18.4	54.3	5.6
2010	5173	71.1	8.6	19.0	99.7	54.1	7.5	4162	80.5	75.3	8.0	1011	19.5	54.1	5.8
2011	5396	69.9	10.1	19.1	98.6	52.5	7.5	4305	79.8	73.8	7.9	1091	20.2	55.0	5.9
2012	5372	75.0	7.2	17.2	92.0	52.2	8.4	4444	82.7	78.3	8.8	928	17.3	59.3	6.7
2013	5617	73.4	8.8	17.2	98.2	51.7	8.2	4652	82.8	76.2	8.5	965	17.2	59.6	6.7
2014	5724	73.5	8.6	17.0	97.2	48.7	8.3	4759	83.1	75.7	8.5	965	16.9	62.9	7.0
2015	5523	72.1	8.8	18.5	112.7	53.9	8.1	4480	81.1	75.4	8.4	1043	18.9	58.1	6.5
2016	2758	70.7	8.7	19.7	99.2	47.5	8.2	2179	79.0	75.1	8.8	579	21.0	53.9	6.1

Tabela 2.4: Distribucija pregonitev po letih na kmetijah

Leto	MLADICE					STARE SVINJE				
	Št. preg.	DPP (dni)	do 25. dne (%)	25-40 dni (%)	po 40. dnevu (%)	Št. preg.	DPP (dni)	do 25. dne (%)	25-40 dni (%)	po 40. dnevu (%)
1984	88	60.3	41.7	8.3	50.0	562	38.1	50.7	18.3	31.0
1985	67	79.1	28.6	0.0	71.4	621	36.5	58.6	12.1	29.3
1986	185	39.0	52.6	5.3	42.1	669	35.3	61.1	11.1	27.8
1987	158	52.4	22.2	22.2	55.6	734	33.5	58.3	15.3	26.4
1988	194	41.1	39.1	21.7	39.1	591	32.4	56.3	26.4	17.2
1989	193	55.9	30.8	7.7	61.5	678	32.0	59.7	16.9	23.4
1990	170	34.9	45.5	27.3	27.3	824	33.5	56.0	17.6	26.4
1991	177	38.7	29.4	23.5	47.1	785	38.4	56.6	14.5	29.0
1992	156	27.9	71.4	7.1	21.4	835	39.4	50.9	11.3	37.7
1993	263	61.8	16.7	22.2	61.1	739	42.3	48.4	15.6	36.1
1994	690	44.9	49.0	15.7	35.3	1187	43.3	42.2	17.7	40.1
1995	1900	38.0	44.3	24.0	31.8	1595	46.2	37.3	19.8	42.9
1996	2910	34.4	51.6	23.3	25.2	1977	43.1	46.8	13.8	39.3
1997	3326	30.9	55.2	22.8	22.0	2441	43.8	48.3	12.2	39.5
1998	4048	35.9	52.7	21.9	25.3	2929	44.8	48.8	12.5	38.7
1999	2782	38.1	51.7	18.2	30.1	3370	44.9	44.8	14.6	40.5
2000	2495	37.6	50.2	21.3	28.5	3338	42.8	44.4	15.4	40.3
2001	2587	39.1	50.4	20.6	29.0	3283	44.0	47.1	16.0	36.8
2002	2416	42.4	48.5	18.0	33.5	3581	43.0	45.7	17.6	36.7
2003	601	40.9	46.3	21.6	32.1	1089	47.6	41.3	16.3	42.3
2004	599	42.6	47.7	16.0	36.2	1300	48.9	40.8	13.2	46.0
2005	566	39.9	47.9	19.6	32.5	1138	49.6	39.2	14.7	46.1
2006	457	42.5	48.1	16.8	35.0	1001	48.7	39.8	15.9	44.4
2007	429	47.3	41.7	18.6	39.6	1075	52.4	35.2	15.8	49.1
2008	397	44.0	46.9	18.9	34.2	1147	57.8	33.1	14.2	52.7
2009	411	46.3	49.1	15.6	35.3	1036	58.8	31.9	14.4	53.7
2010	480	46.6	45.1	13.3	41.6	985	54.1	35.6	16.2	48.2
2011	384	46.0	37.7	20.1	42.2	1033	52.5	34.1	18.2	47.7
2012	427	40.5	51.3	14.5	34.2	923	52.2	37.4	14.2	48.4
2013	418	43.5	47.1	18.2	34.7	964	51.7	35.4	15.2	49.5
2014	373	38.5	47.2	22.3	30.6	970	48.7	38.1	15.3	46.6
2015	413	42.8	40.0	22.3	37.8	1021	53.9	34.6	15.3	50.2
2016	200	46.4	39.0	18.5	42.5	542	47.5	37.6	16.8	45.6

2.3 Analiza reprodukcijskega ciklusa

Tabela 2.5: Starost mladic ob pravitvi in število krmnih dni na živorojenega pujska pri mladicah na kmetijah

Leto	Št. pras.	Starost ob 1.prip. pras.	Starost ob pras.	do 360 dni (%)	361-420 dni (%)	≥421 dni (%)	Izl. (%)	pred prip. (%)	po prip. (%)	Starost ob izl.	kDOP (dni)	KD/ $P_{\bar{z}}$
1984	87	272.6	388.8	64.4	26.4	9.2					188.8	20.5
1985	65	237.2	352.2	93.8	6.2		3.0			318.0	155.8	17.6
1986	175	255.9	374.0	74.3	17.7	8.0	3.8			339.6	179.6	19.7
1987	149	255.9	373.4	67.1	22.8	10.1	6.9			331.1	183.1	22.0
1988	184	234.8	353.1	70.1	22.3	7.6	3.7			327.6	157.9	18.2
1989	185	240.7	362.9	65.4	26.5	8.1	3.6			371.3	169.4	19.6
1990	165	249.8	366.9	67.3	22.4	10.3	2.9			322.7	170.6	19.0
1991	173	246.8	365.2	54.9	34.1	11.0	1.7			337.7	167.6	18.9
1992	153	257.6	375.8	51.6	32.0	16.3					175.8	19.8
1993	257	260.0	376.9	47.9	36.2	9.3	2.6			577.7	187.2	21.1
1994	349	249.4	368.9	54.2	33.2	12.6	3.5	42.9	57.1	396.3	177.5	19.7
1995	608	245.5	367.5	54.1	33.9	12.0	6.7	49.7	50.3	340.2	163.5	18.5
1996	632	240.3	364.1	58.5	30.1	11.4	14.1	57.8	42.2	294.7	168.4	18.7
1997	545	241.8	364.3	63.3	30.8	5.9	16.1	56.2	43.8	306.3	173.0	19.2
1998	893	234.8	357.7	61.0	30.9	8.1	10.9	47.0	53.0	311.3	164.2	17.9
1999	794	242.6	365.9	53.9	34.9	11.2	19.6	57.7	42.3	311.6	184.4	20.2
2000	698	236.6	362.2	57.7	32.4	9.9	16.7	42.7	57.3	316.2	173.7	18.9
2001	899	237.6	363.0	59.6	29.4	11.0	21.2	48.2	51.8	300.7	183.2	20.8
2002	862	237.2	364.2	56.6	33.2	10.2	19.0	47.8	52.2	309.6	179.5	19.6
2003	940	241.0	366.5	22.1	42.6	35.3	19.4	47.4	52.6	323.6	185.8	20.3
2004	1023	242.6	369.8	52.5	34.2	13.3	21.1	59.2	40.8	303.6	187.5	20.6
2005	928	251.7	378.1	43.8	39.3	16.9	18.0	46.4	53.6	327.3	191.2	21.0
2006	977	248.8	374.3	44.2	40.9	14.8	17.2	56.6	43.4	322.1	185.6	19.9
2007	969	243.5	369.2	54.7	32.5	12.8	20.8	65.4	34.6	302.0	183.2	19.7
2008	874	245.8	370.4	53.5	32.8	13.6	25.0	74.4	25.6	292.4	186.6	19.5
2009	866	240.8	365.7	58.5	29.0	12.5	21.0	64.1	35.9	305.8	181.1	19.4
2010	922	249.6	376.4	49.0	35.8	15.2	23.3	59.5	40.5	303.6	191.7	20.2
2011	1042	245.2	370.8	51.0	35.8	13.2	22.1	65.3	34.7	297.9	187.4	19.0
2012	964	243.3	369.0	55.3	32.5	12.2	23.0	55.1	44.9	308.1	190.2	18.6
2013	1035	238.5	362.7	57.7	32.7	9.6	21.5	52.5	47.5	291.9	176.0	16.9
2014	981	239.1	362.6	59.6	31.4	9.0	21.4	63.0	37.0	289.2	176.0	16.6
2015	845	242.8	367.8	54.5	34.1	11.4	21.2	54.4	45.6	314.4	186.2	18.2
2016	422	249.2	376.1	47.1	37.7	15.2	17.7	51.3	48.7	308.8	186.1	16.9

Tabela 2.6: Doba med prasiatvama in število krmnih dni na pujska po letih na kmetijah

Leto	Št. pras.	DMP (dni)	do 160 dni (%)	161-200 dni (%)	≥201 dni (%)	Izl. (%)	DI (dni)	kDMP (dni)	G_L	$P_{\bar{z}}/$ leto	KD/ $P_{\bar{z}}$
1984	510	162.2	70.0	21.4	8.6	7.9	105.3	171.3	2.10	21.4	17.0
1985	607	158.8	76.3	18.5	5.3	10.3	72.9	167.2	2.20	21.9	16.6
1986	618	160.2	74.8	18.8	6.5	9.9	62.9	167.2	2.20	21.5	17.0
1987	701	160.9	71.9	21.8	6.3	14.1	82.0	174.4	2.10	20.7	17.6
1988	505	161.6	61.2	34.1	4.7	18.9	73.5	178.7	2.00	20.5	17.8
1989	637	162.9	59.7	34.1	6.3	15.3	94.3	179.9	2.00	20.9	17.5
1990	748	166.2	52.3	39.0	8.7	11.8	71.5	175.7	2.10	20.7	17.6
1991	726	166.6	52.3	39.1	8.5	13.6	84.4	179.8	2.00	20.7	17.7
1992	769	169.1	46.6	46.0	7.5	13.1	87.5	182.3	2.00	20.3	18.0
1993	684	174.4	35.1	49.7	15.2	18.6	112.9	200.1	1.80	18.7	19.5
1994	1023	171.7	46.8	41.4	11.7	16.4	104.8	192.5	1.90	19.7	18.5
1995	2038	169.4	50.4	39.8	9.8	16.1	99.0	189.4	1.90	20.4	17.9
1996	1789	170.4	50.8	38.2	11.1	18.0	103.0	194.4	1.90	19.9	18.4
1997	2220	170.6	57.8	30.5	11.7	16.1	105.6	191.7	1.90	19.8	18.4
1998	2594	168.3	54.4	36.5	9.1	18.0	109.2	193.4	1.90	19.9	18.4
1999	2890	168.4	55.7	34.4	10.0	20.6	115.4	199.8	1.80	19.0	19.2
2000	2959	168.2	58.2	31.2	10.5	16.6	106.8	190.5	1.90	20.0	18.2
2001	2796	167.1	61.5	29.0	9.4	20.8	102.5	194.9	1.90	19.3	19.0
2002	3163	166.0	63.7	27.5	8.8	18.4	103.1	190.2	1.90	20.0	18.3
2003	3605	167.6	25.4	56.2	18.4	20.3	123.4	200.4	1.82	18.8	19.4
2004	3833	170.6	59.3	28.2	12.5	19.2	128.8	202.8	1.80	18.4	19.8
2005	3998	169.9	58.4	30.1	11.5	17.4	117.5	196.0	1.86	19.4	18.8
2006	4043	168.8	59.6	29.3	11.2	17.7	121.7	196.2	1.86	19.4	18.8
2007	4184	168.9	60.8	28.1	11.1	18.9	118.1	197.8	1.85	19.4	18.8
2008	4058	169.1	61.4	27.7	10.8	19.5	119.1	199.7	1.83	19.2	19.0
2009	4133	167.5	63.9	25.8	10.3	17.1	120.4	194.0	1.88	19.9	18.4
2010	3740	168.3	66.6	22.9	10.5	19.8	113.5	197.7	1.85	19.5	18.7
2011	3722	169.3	62.0	26.7	11.4	21.2	120.0	202.7	1.80	19.3	18.9
2012	3997	165.0	68.7	22.6	8.7	18.1	104.2	188.9	1.93	21.7	16.8
2013	4133	164.3	70.7	20.0	9.4	19.9	106.4	191.8	1.90	21.4	17.1
2014	4134	164.2	68.1	23.5	8.4	19.6	103.7	190.8	1.91	21.4	17.0
2015	4047	167.1	64.8	25.6	9.6	19.0	126.9	197.6	1.85	20.7	17.7
2016	1901	165.8	65.2	25.2	9.6	19.6	114.8	194.9	1.87	21.7	16.8

Tabela 2.7: Velikost gnezda ob rojstvu, gospodarnost priraje pujskov in delež letne obnove črede svinj na kmetijah

Leto	Št. pras.	Št. izl.	$P_{\bar{z}}/$ gn.	KD/ gn.	G_L	KD/ $P_{\bar{z}}$	Št. svinj v čredi	Remont (%)	G_S
1984									
1985									
1986									
1987									
1988									
1989									
1990									
1991									
1992									
1993									
1994	1372	221	10.04	187.2	1.95	18.6	816	27.1	7.20
1995	2646	595	10.17	174.5	2.09	17.2	2290	26.0	8.05
1996	2421	849	10.17	178.7	2.04	17.6	2209	38.4	5.32
1997	2765	1008	10.14	180.9	2.02	17.8	2597	38.8	5.20
1998	3487	1042	10.18	176.1	2.07	17.3	3077	33.9	6.12
1999	3684	1420	10.13	192.4	1.90	19.0	2938	48.3	3.93
2000	3658	1054	10.20	183.3	1.99	18.0	2632	40.0	4.97
2001	3695	1370	9.92	189.6	1.93	19.1	2657	51.6	3.73
2002	4025	1221	10.14	185.9	1.96	18.3	2683	45.5	4.32
2003	4545	1511	10.10	194.6	1.90	19.3	3187	47.4	4.01
2004	4856	1548	9.98	197.2	1.85	19.8	3284	47.1	3.93
2005	4926	1338	10.19	194.3	1.88	19.1	3277	40.8	4.60
2006	5020	1411	10.20	192.1	1.90	18.8	3438	41.0	4.63
2007	5153	1613	10.29	192.6	1.90	18.7	3428	47.0	4.03
2008	4932	1728	10.35	195.2	1.87	18.9	3317	52.1	3.59
2009	4999	1429	10.36	189.7	1.92	18.3	3221	44.4	4.34
2010	4662	1564	10.36	195.7	1.87	18.9	3085	50.7	3.68
2011	4764	1578	10.54	197.4	1.85	18.7	3073	51.4	3.60
2012	4961	1430	11.04	189.3	1.93	17.2	2999	47.7	4.04
2013	5168	1601	11.08	186.6	1.96	16.9	3153	50.8	3.85
2014	5115	1571	11.10	186.0	1.96	16.8	3125	50.3	3.90
2015	4892	1477	11.00	193.9	1.88	17.6	3162	46.7	4.03
2016	2323	671	11.51	192.1	1.90	16.7			

Tabela 2.8: Dolžina laktacije in starostna struktura po letih na kmetijah

Leto	DOLŽINA LAKTACIJE (dni)							P R A S I T V E		
	Lakt. (dni)	do 14 dni (%)	15-19 dni (%)	20-24 dni (%)	25-29 dni (%)	30-34 dni (%)	≥35 dni (%)	prva (%)	2.-7. (%)	≥8 (%)
1984	30.6	4.3	0.4	2.7	92.6	0.0	0.0	25.4	74.6	0.0
1985	30.4	7.0	0.1	6.5	86.4	0.0	0.0	9.3	66.3	24.4
1986	29.3	4.0	0.7	9.3	86.0	0.0	0.0	21.0	56.7	22.3
1987	30.0	4.0	1.0	8.5	86.5	0.0	0.0	16.4	68.2	15.4
1988	31.4	6.0	1.9	5.8	86.3	0.0	0.0	23.5	67.8	8.7
1989	32.1	3.6	1.1	6.0	89.3	0.0	0.0	20.3	75.2	4.5
1990	34.0	3.9	1.1	8.4	86.6	0.0	0.0	16.7	74.5	8.8
1991	35.2	4.3	0.6	7.4	87.7	0.0	0.0	17.3	71.5	11.2
1992	35.4	4.3	0.6	3.8	91.3	0.0	0.0	14.7	68.3	17.0
1993	36.5	4.6	1.2	3.8	90.4	0.0	0.0	23.9	61.7	14.4
1994	35.5	2.2	0.5	4.4	11.0	26.1	55.8	25.4	64.4	10.2
1995	35.5	1.8	0.4	1.1	11.5	29.3	55.9	23.0	68.6	8.4
1996	35.2	1.9	0.4	2.0	13.4	26.2	56.1	26.1	66.0	7.9
1997	34.7	3.0	0.6	2.7	14.6	29.8	49.2	19.7	71.8	8.5
1998	34.6	2.8	0.6	2.6	14.2	33.7	46.1	57.1	37.2	5.7
1999	33.8	3.0	0.9	4.0	16.6	34.5	41.1	46.7	45.4	7.9
2000	32.6	2.9	1.1	5.0	19.6	38.1	33.2	43.3	46.1	10.6
2001	31.8	3.4	0.8	5.6	25.3	39.5	25.5	45.4	44.7	9.9
2002	31.5	3.4	1.3	5.3	26.4	40.5	23.1	39.9	49.5	10.6
2003	31.5	3.9	0.9	5.8	29.6	36.8	22.9	39.1	51.2	9.7
2004	32.6	3.6	0.6	3.0	22.8	42.0	28.1	37.4	51.9	10.6
2005	33.1	3.2	0.6	2.7	22.7	38.7	32.2	35.0	54.7	10.4
2006	33.0	3.0	0.6	3.1	25.2	37.2	30.9	37.8	51.4	10.8
2007	32.5	3.4	0.7	3.2	26.6	38.5	27.7	35.9	51.5	12.6
2008	32.8	3.9	0.4	2.1	21.8	41.7	30.1	35.7	51.5	12.8
2009	32.8	4.0	0.4	1.9	23.6	40.6	29.5	34.3	53.1	12.6
2010	32.1	4.1	0.4	2.1	22.6	44.8	26.1	36.0	51.5	12.6
2011	32.3	3.6	0.8	3.6	20.6	41.9	29.5	34.8	53.7	11.5
2012	31.1	3.7	2.3	6.7	22.0	40.3	25.0	32.2	57.5	10.3
2013	31.1	3.2	1.6	6.6	25.9	37.9	24.8	33.4	56.9	9.7
2014	31.4	4.0	2.7	6.9	23.3	36.9	26.3	32.8	56.2	11.0
2015	31.7	2.7	1.4	8.2	23.6	36.2	27.9	32.6	55.3	12.1
2016	31.7	3.6	0.7	8.2	23.5	36.6	27.5	31.8	54.9	13.3

2.4 Interim obdobje in poodstavitveni premor

Tabela 2.9: Interim obdobje po letih na kmetijah

Leto	P R V E S N I C E				S T A R E S V I N J E			
	IO (dni)	do 12 dni (%)	12-40 dni (%)	≥41 dni (%)	IO (dni)	do 12 dni (%)	12-40 dni (%)	≥41 dni (%)
1984	25.2	50.5	29.4	20.1	10.7	81.8	14.4	3.8
1985	30.1	46.3	26.0	27.7	9.3	87.6	10.1	2.3
1986	21.9	47.0	32.7	20.3	13.1	79.8	12.9	7.3
1987	23.1	57.1	25.2	17.7	13.8	77.7	15.4	6.9
1988	17.6	70.7	19.2	10.1	10.0	83.4	13.5	3.1
1989	21.8	53.5	30.8	15.7	10.9	81.6	14.2	4.2
1990	26.9	55.3	27.7	17.0	13.3	74.8	19.2	6.0
1991	29.8	45.5	32.9	21.6	12.5	79.5	14.1	6.4
1992	28.2	33.5	30.0	36.5	12.2	77.8	17.3	4.9
1993	24.9	47.7	30.7	21.6	14.0	72.2	21.5	6.4
1994	30.2	37.6	33.3	29.1	13.0	68.6	17.5	13.9
1995	21.9	54.3	29.8	15.9	12.0	73.7	20.4	5.9
1996	20.9	51.3	32.8	15.9	10.7	79.7	15.3	5.0
1997	24.7	50.6	31.1	18.3	11.5	77.5	17.5	4.9
1998	17.9	59.1	29.1	11.7	10.8	79.8	15.0	4.1
1999	18.7	57.3	30.3	12.6	11.3	79.3	16.1	5.0
2000	20.6	58.4	26.9	14.7	10.9	80.9	14.8	4.3
2001	18.0	59.6	25.4	14.9	11.1	78.4	14.7	6.8
2002	19.3	58.5	28.4	13.1	10.2	82.2	14.3	3.5
2003	18.2	62.1	24.8	13.1	11.5	79.5	15.7	4.8
2004	22.1	58.7	22.0	19.3	12.1	80.1	12.9	7.0
2005	21.2	57.5	27.0	15.5	11.6	80.0	15.0	5.0
2006	20.5	59.4	24.5	16.1	11.6	79.6	14.9	5.5
2007	18.5	61.4	24.9	13.7	11.2	82.2	13.0	4.8
2008	18.4	67.3	19.4	13.3	11.8	81.3	12.7	6.0
2009	16.9	70.2	17.4	12.4	12.0	82.9	11.1	6.0
2010	17.9	69.1	19.4	11.5	9.9	85.8	10.8	3.4
2011	17.0	66.3	23.7	10.0	11.1	83.6	11.2	5.2
2012	15.0	75.4	15.8	8.8	10.1	85.2	11.1	3.8
2013	12.3	80.1	13.4	6.5	9.0	88.1	8.8	3.1
2014	13.7	77.1	14.9	8.0	9.0	88.5	8.3	3.2
2015	14.7	75.1	15.3	9.6	9.2	87.9	8.7	3.4
2016	18.0	70.8	17.1	12.1	10.1	85.5	10.3	4.2

Tabela 2.10: Poodstavitveni premor po letih na kmetijah

Leto	PRVESNICE					STARE SVINJE				
	Št. svinj	PP (dni)	do 12 dni (%)	13-60 dni (%)	≥61 dni (%)	Št. svinj	PP (dni)	do 12 dni (%)	13-60 dni (%)	≥61 dni (%)
1984	109	31.3	44.0	40.5	15.5	527	15.4	73.8	20.8	5.4
1985	69	37.2	42.0	40.3	17.7	610	13.8	79.7	16.0	4.3
1986	147	25.1	47.1	36.1	16.8	576	16.8	75.4	14.4	10.2
1987	142	28.7	51.5	34.5	14.0	664	18.0	70.4	23.6	6.0
1988	167	24.0	56.3	34.8	8.9	511	15.5	73.6	22.2	4.2
1989	215	28.5	46.5	30.7	22.8	540	14.3	73.7	23.5	2.8
1990	177	33.6	49.7	35.6	14.7	738	17.7	68.0	26.3	5.7
1991	143	32.1	41.3	42.0	16.7	717	17.3	72.1	21.9	6.0
1992	167	35.7	37.7	42.5	19.8	774	17.2	69.8	23.8	6.5
1993	218	30.6	42.2	44.0	13.8	643	20.5	63.1	30.0	6.8
1994	357	30.2	33.0	39.0	28.0	1022	20.5	61.1	24.8	14.1
1995	427	28.5	46.7	39.9	13.4	1385	17.8	67.2	25.8	6.9
1996	587	31.1	43.3	40.4	16.3	1723	17.9	69.1	23.6	7.3
1997	743	33.8	41.6	39.7	18.5	2149	18.4	67.9	24.5	7.4
1998	745	28.8	47.7	39.6	12.6	2793	20.0	67.7	23.2	8.1
1999	1035	29.9	45.0	40.1	15.1	3060	21.5	66.1	24.8	9.3
2000	783	33.5	43.9	38.3	17.8	3348	20.6	66.5	24.6	8.9
2001	1058	31.6	45.1	36.0	18.9	3031	20.0	65.9	24.0	10.1
2002	1028	31.4	45.3	40.6	14.1	3329	19.7	69.2	22.9	7.9
2003	1219	32.5	47.5	35.4	17.1	3959	23.0	65.4	24.1	10.5
2004	1404	40.3	43.2	33.0	23.8	4416	25.8	63.9	22.5	13.6
2005	1344	40.6	43.1	35.5	21.4	4385	24.1	65.6	23.5	10.9
2006	1176	36.4	45.3	34.6	20.1	4465	22.3	66.6	23.1	10.3
2007	1246	34.3	49.1	33.9	17.0	4519	23.8	68.3	20.7	11.0
2008	1300	38.4	50.6	27.4	22.0	4551	25.2	67.2	21.2	11.6
2009	1139	35.7	54.4	27.2	18.4	4584	26.3	69.5	18.1	12.4
2010	1120	38.8	52.3	29.5	18.2	4053	24.1	70.0	19.5	10.5
2011	1301	36.4	46.8	33.9	19.3	4095	22.9	69.4	19.8	10.8
2012	1244	31.5	58.7	24.5	16.8	4128	20.8	72.6	18.6	8.8
2013	1236	26.3	61.9	25.6	12.5	4381	19.4	74.7	16.3	9.0
2014	1328	27.6	60.9	25.0	14.1	4396	18.4	75.0	16.7	8.3
2015	1057	31.7	55.8	27.9	16.3	4466	20.7	73.0	17.3	9.7
2016	496	37.4	52.6	26.6	20.8	2262	24.2	69.6	18.2	12.2

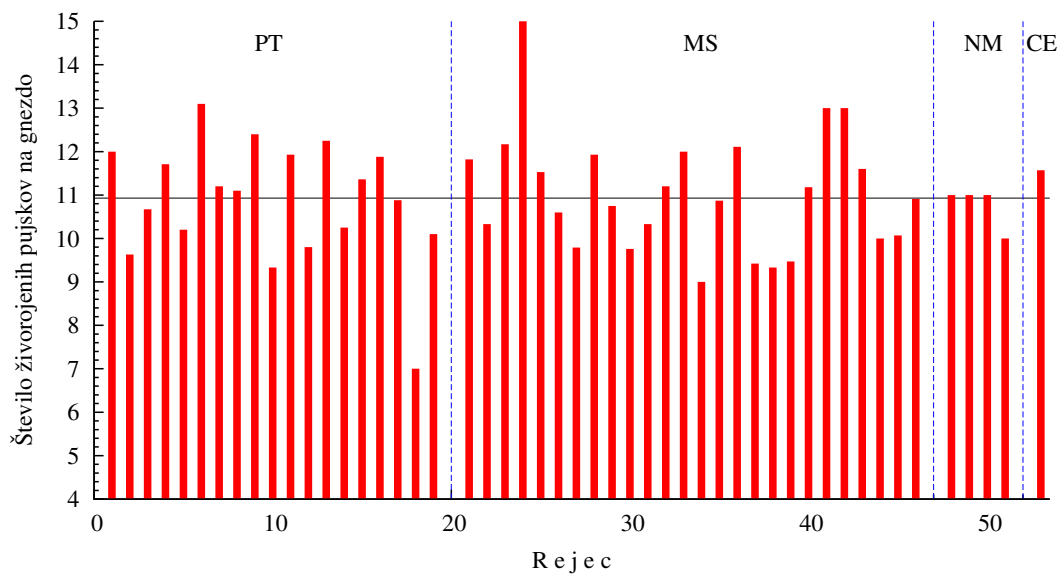
2.5 Analiza izločitev

Tabela 2.11: Izločitve svinj po letih na kmetijah

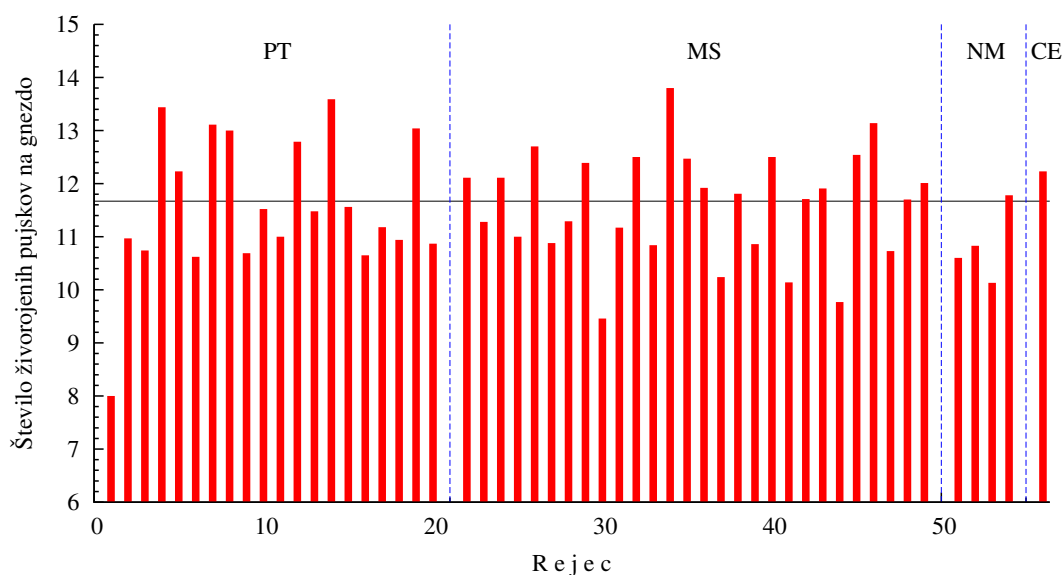
Leto	MLADICE							STARE SVINJE					
	Št. izl.	DOI (dni)	Izločitve		Vzrok izločitve			Št. izl.	DI (dni)	Izločitve		Vzrok izločitve	
			pred	po pr.	8	9	10			pred	po pr.	9	10
1984	0							50	95.6	66.0	34.0	14.0	14.0
1985	4	178.5						69	75.1	68.1	31.9	10.1	13.0
1986	7	138.2						83	59.5	78.3	21.7	7.2	6.0
1987	20	94.9						139	69.3	74.8	25.2	7.9	5.0
1988	6	144.0						112	77.6	70.5	29.5	1.8	5.4
1989	6	171.3						119	101.2	56.3	43.7	8.4	16.8
1990	6	139.3						102	73.7	76.5	25.5	10.8	6.9
1991	3	137.7						125	85.8	63.2	36.8	9.6	4.8
1992	0							105	92.0	59.1	40.9	14.3	6.7
1993	6	149.8						158	100.4	64.6	35.4	8.2	7.0
1994	17	168.6	52.9	47.1	17.6	29.4	5.9	127	101.1	71.7	28.3	12.6	6.3
1995	193	108.6	60.6	39.4	26.4	23.3	5.2	308	96.8	65.3	34.7	10.1	5.5
1996	495	95.2	57.4	42.6	30.7	31.9	4.4	423	105.2	58.9	41.1	13.2	8.7
1997	524	116.3	52.7	47.3	22.1	27.7	10.9	422	109.9	55.0	45.0	19.9	8.1
1998	563	108.2	51.5	48.5	17.9	30.0	9.6	638	107.8	56.1	43.9	17.7	6.4
1999	551	113.5	57.9	42.1	18.1	28.9	8.3	730	121.5	49.7	50.3	18.6	9.2
2000	510	113.9	45.1	54.9	21.4	37.8	7.6	634	110.5	49.1	50.9	15.5	10.1
2001	619	110.4	45.4	54.6	21.5	34.9	10.8	780	109.0	48.6	51.4	17.4	12.4
2002	474	108.8	48.9	51.1	21.9	33.8	8.6	769	105.5	51.6	48.4	17.9	10.0
2003	684	125.9	52.2	47.8	21.3	39.5	6.6	915	121.8	43.7	56.3	22.4	9.4
2004	577	113.2	57.4	42.6	22.4	22.9	7.8	974	138.7	45.5	54.5	17.5	10.9
2005	467	149.4	39.4	60.6	29.3	34.5	12.2	894	124.4	49.3	50.7	15.5	15.1
2006	625	123.9	62.6	37.4	42.6	22.7	7.4	924	130.6	49.1	50.9	21.8	9.5
2007	634	102.8	66.9	33.1	41.0	19.1	5.5	1008	124.3	53.5	46.5	17.4	10.6
2008	669	104.5	71.3	28.7	46.5	16.6	6.6	1001	136.3	46.7	53.3	20.0	11.5
2009	600	99.8	62.8	37.2	45.0	24.0	8.2	908	125.8	52.8	47.2	20.7	10.1
2010	585	116.7	58.1	41.9	29.6	21.7	13.2	966	129.8	51.8	48.2	22.5	11.9
2011	566	111.8	59.9	40.1	32.9	27.4	7.1	932	126.1	48.0	52.0	26.8	11.8
2012	613	104.7	54.3	45.7	30.7	27.6	11.3	959	103.8	56.6	43.4	21.5	8.8
2013	552	102.6	52.7	47.3	28.8	28.4	11.6	1095	110.4	55.4	44.6	19.6	10.1
2014	556	96.0	57.6	42.4	30.9	27.7	8.8	974	113.2	48.5	51.5	24.0	11.4
2015	454	116.9	54.0	46.0	32.4	26.9	13.2	903	134.7	46.7	53.3	24.8	14.5
2016	173	118.0	44.5	55.5	19.7	34.7	10.4	420	129.9	42.4	57.6	16.4	13.8

Poglavje 3

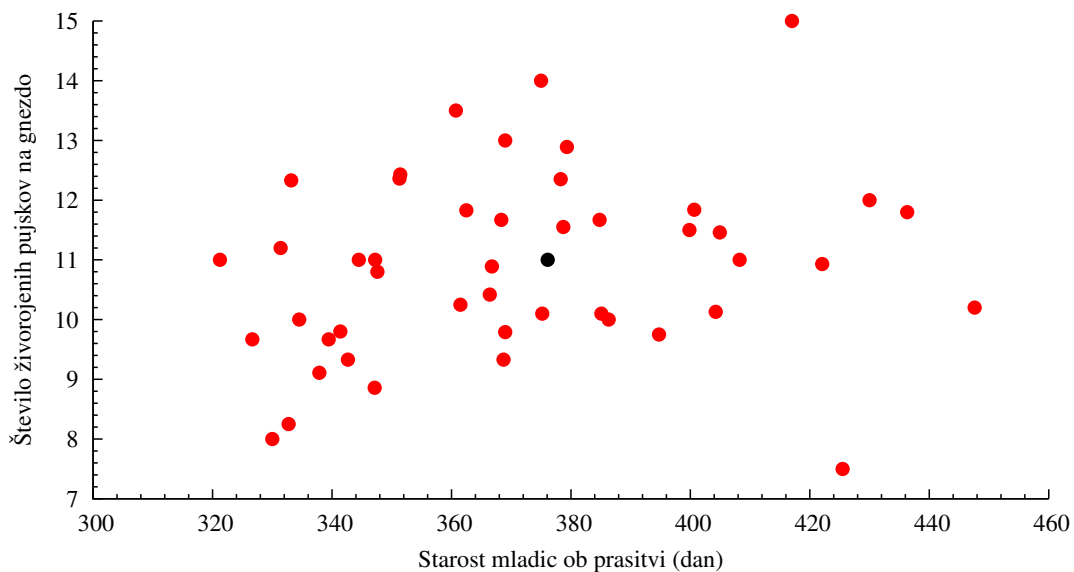
Grafični prikaz rezultatov plodnosti



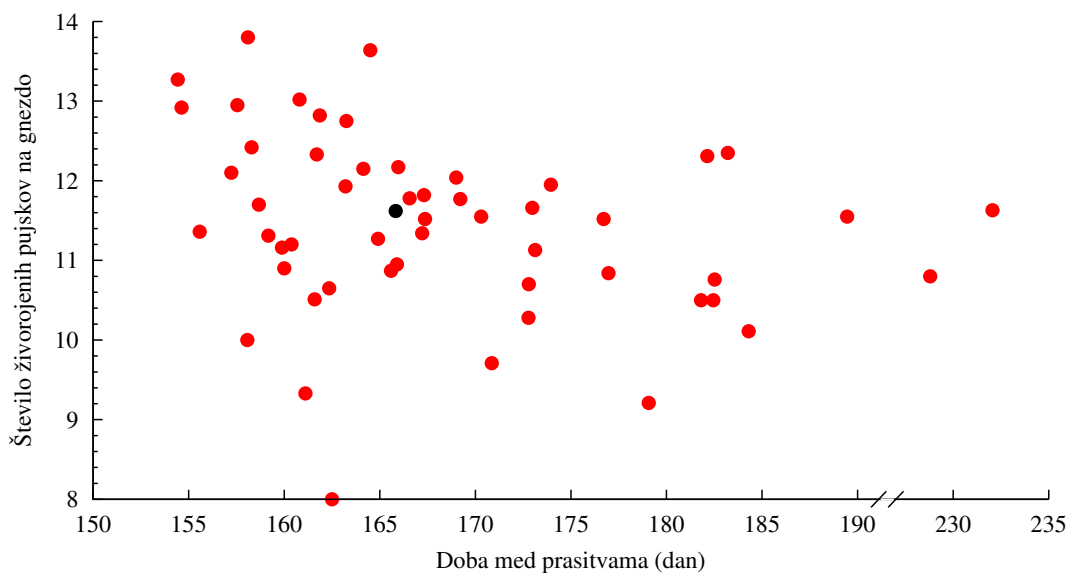
Slika 3.1: Število živorojenih pujskov pri mladica h na kmetijah po zavodih v Sloveniji v letu 2016



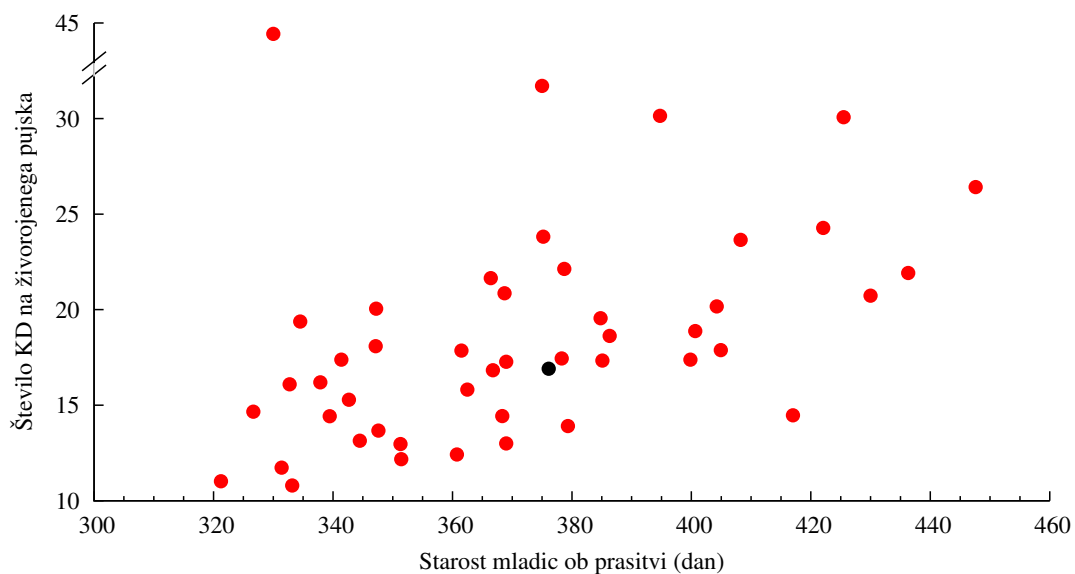
Slika 3.2: Število živorojenih pujskov pri starih svinjah na kmetijah po zavodih v Sloveniji v letu 2016



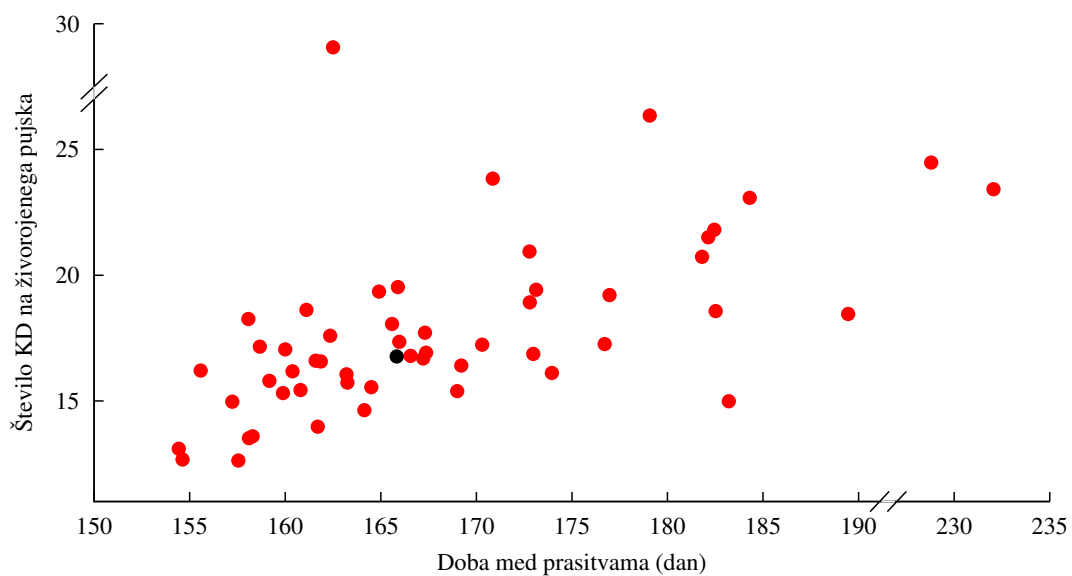
Slika 3.3: Število živorojenih pujskov na gnezdo in starost mladic ob praritvi na kmetijah v Sloveniji v letu 2016



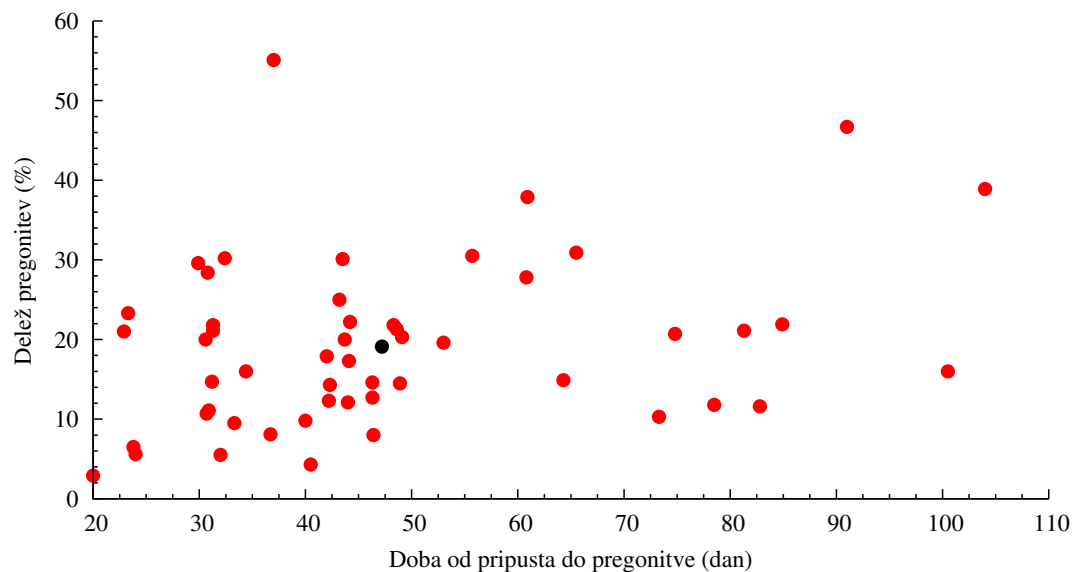
Slika 3.4: Število živorojenih pujskov na gnezdo in doba med praritvama na kmetijah v Sloveniji v letu 2016



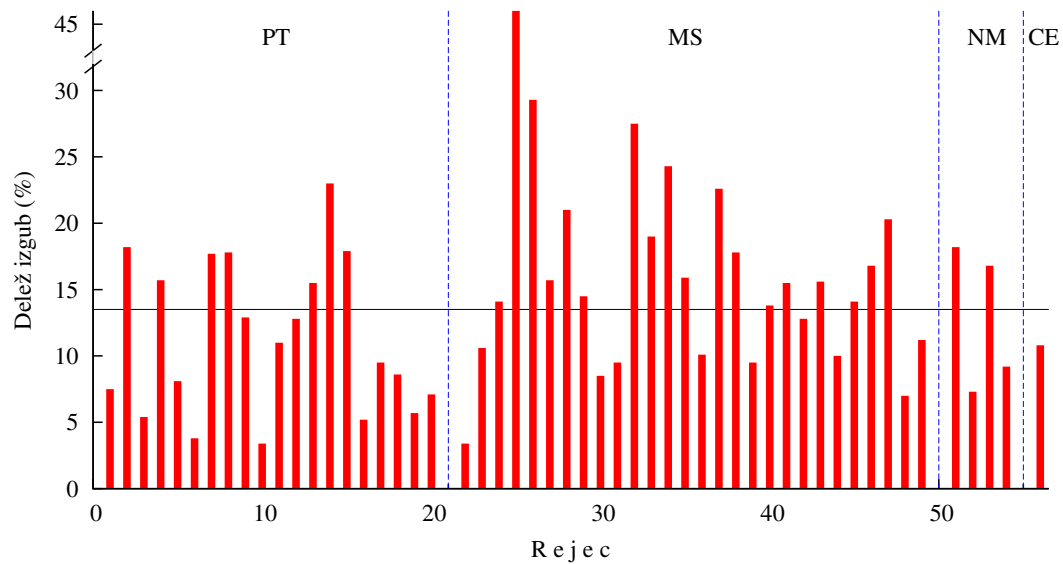
Slika 3.5: Število krmnih dni na živorojenega pujska in starost mladic ob pravitvi na kmetijah v Sloveniji v letu 2016



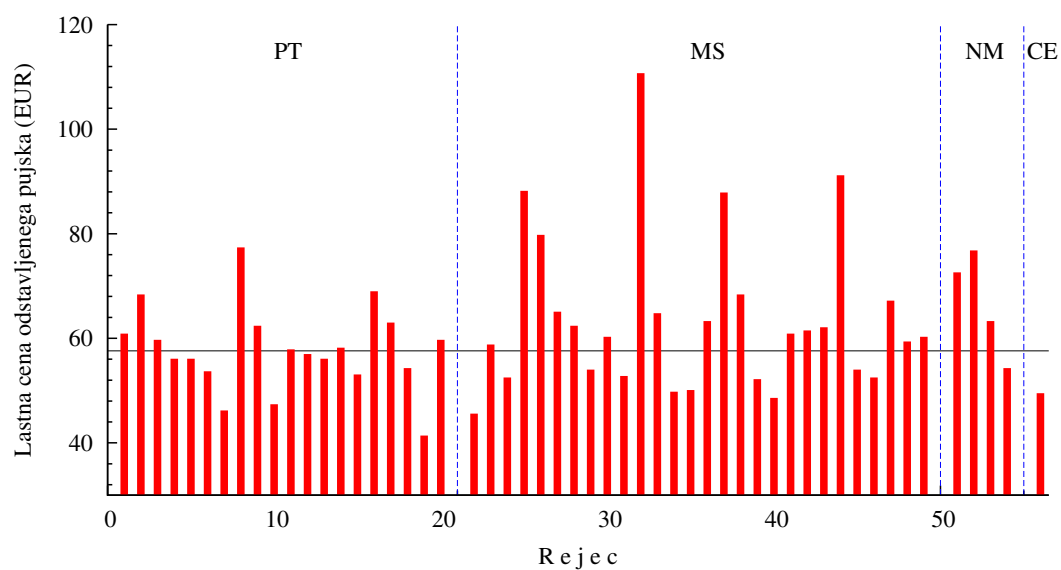
Slika 3.6: Število krmnih dni na živorojenega pujska in doba med pravitvama na kmetijah v Sloveniji v letu 2016



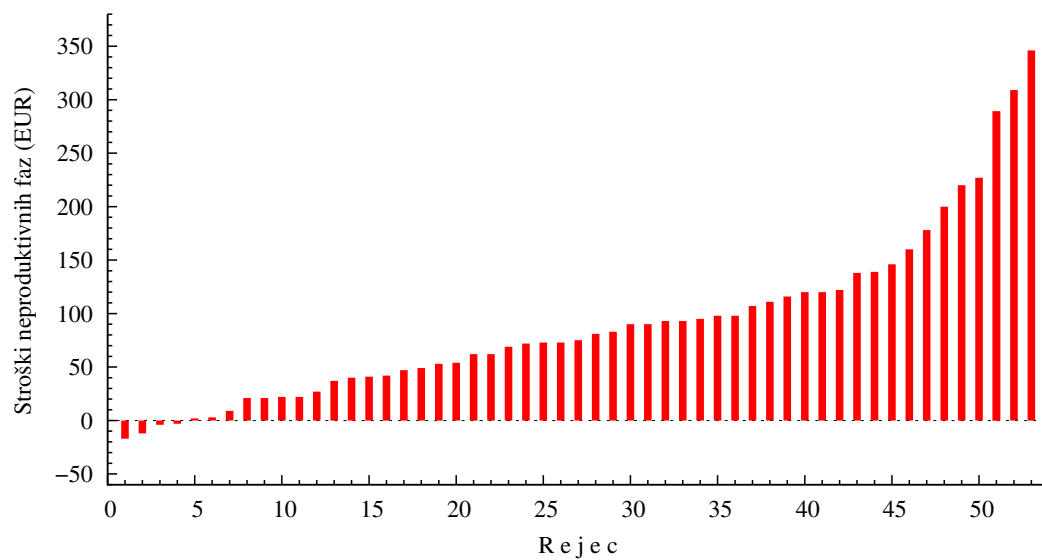
Slika 3.7: Delež prigonitev in doba od pripusta do prigonitve na kmetijah v Sloveniji v letu 2016



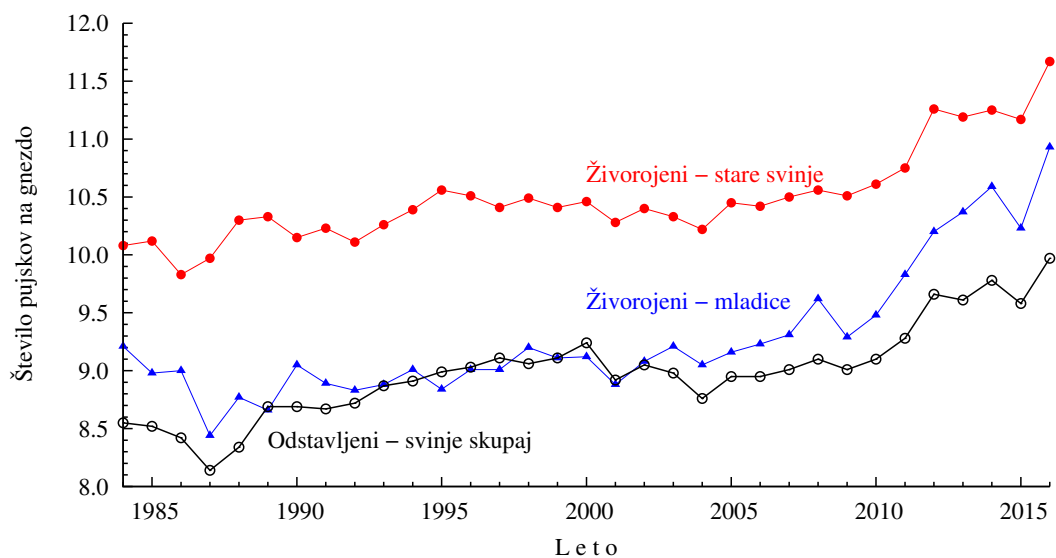
Slika 3.8: Delež izgubljenih pujskov na kmetijah po zavodih v Sloveniji v letu 2016



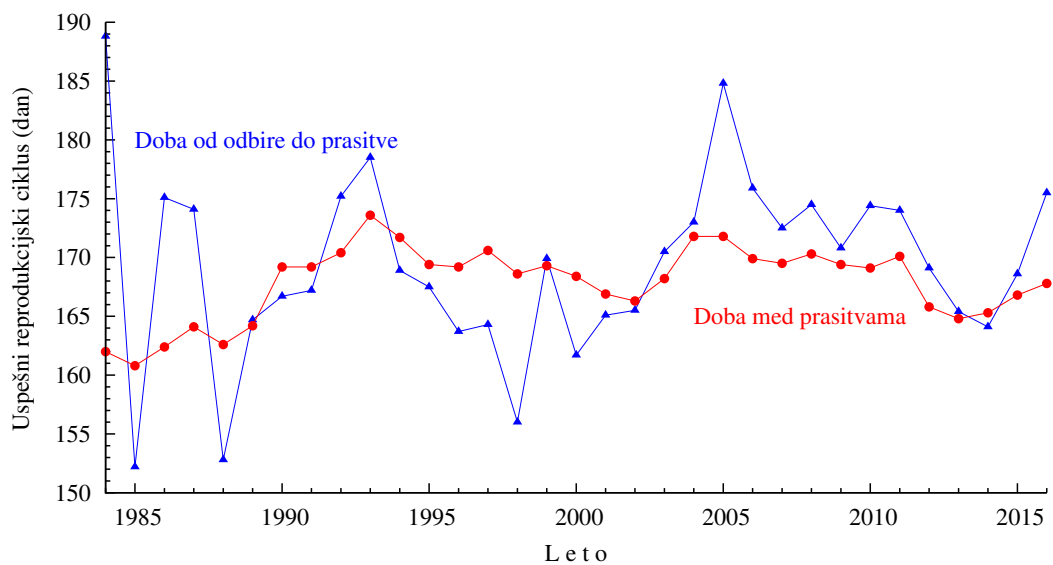
Slika 3.9: Lastna cena odstavljenega pujska v EUR na kmetijah v Sloveniji v letu 2016



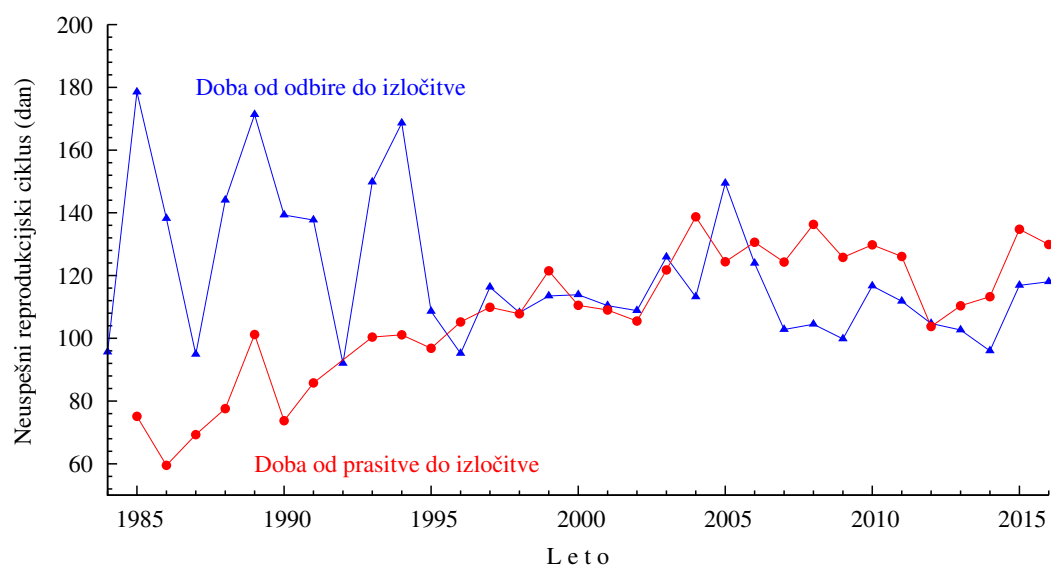
Slika 3.10: Dodatni stroški neproduktivnih faz na gnezdo v EUR na kmetijah v Sloveniji v letu 2016



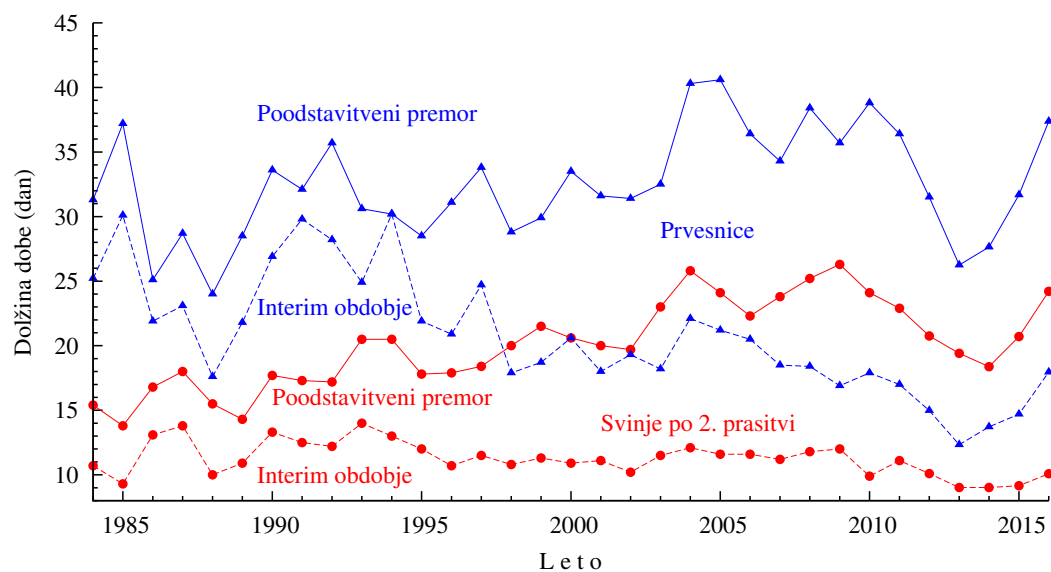
Slika 3.11: Število živorojenih in odstavljenih pujskov na gnezdo pri mladicach in starih svinjah na kmetijah v Sloveniji po letih



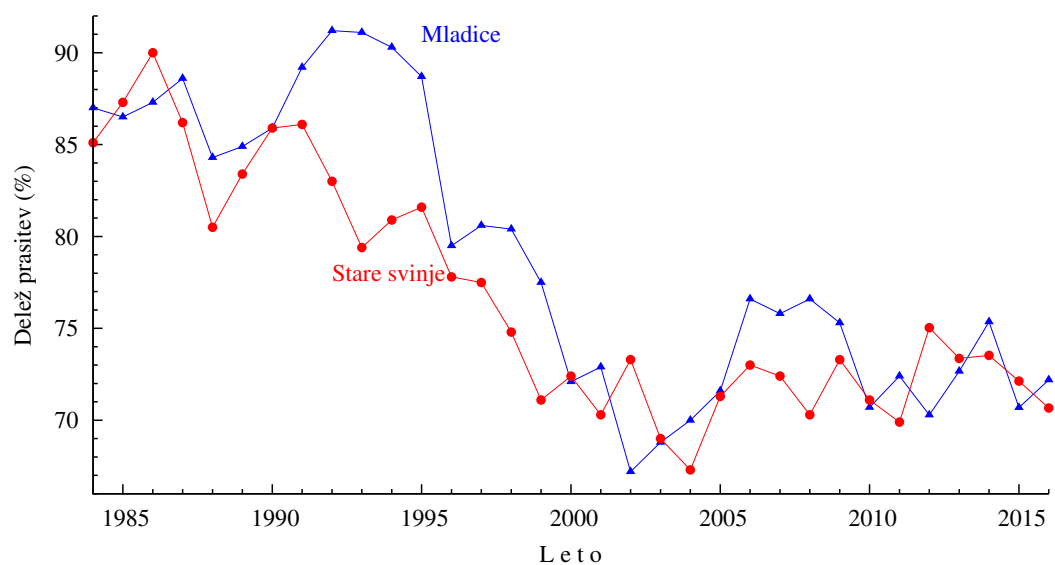
Slika 3.12: Dolžina uspešnega reprodukcijskega ciklusa pri mladicach in starih svinjah na kmetijah v Sloveniji po letih



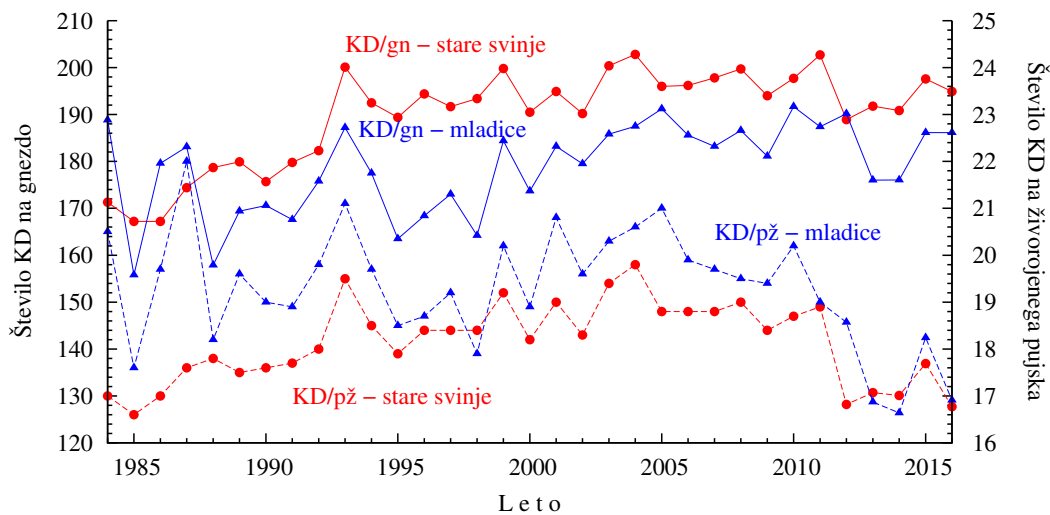
Slika 3.13: Dolžina neuspešnega reprodukcijskega ciklusa na kmetijah v Sloveniji po letih



Slika 3.14: Dolžina poodstavitvenega premora in interim obdobja pri prvesnicah in svinjah po 2. pravitvi na kmetijah v Sloveniji po letih



Slika 3.15: Delež prasičev pri mladiceh in starih svinjah na kmetijah v Sloveniji po letih



Slika 3.16: Število krmnih dni na gnezdo pri mladiceh (KD/gn - mladice) in starih svinjah (KD/gn - stare svinje) ter na živorojenega pujska pri mladiceh (KD/pž - mladice) in starih svinjah (KD/pž - stare svinje) na kmetijah v Sloveniji po letih