



Univerza v Ljubljani, Biotehniška fakulteta
Oddelek za zootehniko
Groblje 3, 1230 DOMŽALE
Tel: +386 (0)1 320 3920
URL: <http://agri.bf.uni-lj.si/Enota>



ANALIZA PLODNOSTI SVINJ NA KMETIJAH

ZA LETO 2022

Dokument št. 23-1/2023

VODENJE REPRODUKCIJE NA ZAVODIH:

Mag. Darja PREVALNIK
Mag. Marjeta ŽENKO
Mag. Andrej KASTELIC
Mag. Sašo SEVER

OBDELAVA IN OCENA REZULTATOV:

Prof. dr. Milena KOVAČ
Doc. dr. Špela MALOVRH
Dr. Sanja BOGIČEVIĆ
Asist. Anita ULE, mag. inž. zoot.
Suzana KRHLANKO, mag. inž. zoot.
Karmen LOŽAR, dipl. inž. zoot.
Irena ULE
Stanka PAVLIN

DOMŽALE, junij 2023

Kazalo

1 Primerjava plodnosti na kmetijah v letu 2022	7
1.1 Velikost gnezda	7
1.2 Analiza pripustov	9
1.3 Analiza reprodukcijskega ciklusa	12
1.4 Analiza izločitev	18
2 Kmetije skupaj po letih	19
2.1 Velikost gnezda	19
2.2 Analiza pripustov	20
2.3 Analiza reprodukcijskega ciklusa	23
2.4 Interim obdobje in poodstavitveni premor	27
2.5 Analiza izločitev	29
3 Grafični prikaz rezultatov plodnosti	31
3.1 Plodnost mladic	31
3.2 Plodnost starih svinj	33
3.3 Plodnost svinj skupaj	35
3.4 Spremembe rezultatov plodnosti po letih	38
3.4.1 Plodnost mladic	38
3.4.2 Plodnost starih svinj	40
3.4.3 Plodnost svinj skupaj	42
3.4.4 Starostna struktura črede	46

Slike

3.1	Število živorojenih pujskov pri mladicah na kmetijah po zavodih v Sloveniji v letu 2022	31
3.2	Delež mrtvorjenih pujskov pri mladicah na kmetijah po zavodih v Sloveniji v letu 2022	31
3.3	Število živorojenih pujskov na gnezdo in starost mladic ob praritvi na kmetijah v Sloveniji v letu 2022	32
3.4	Število krmnih dni na živorojenega pujska in starost mladic ob praritvi na kmetijah v Sloveniji v letu 2022	32
3.5	Dolžina neproduktivnih faz na gnezdo pri mladicah na kmetijah v letu 2022	32
3.6	Število živorojenih pujskov pri starih svinjah na kmetijah po zavodih v Sloveniji v letu 2022	33
3.7	Delež mrtvorjenih pujskov pri starih svinjah na kmetijah po zavodih v Sloveniji v letu 2022	33
3.8	Število živorojenih pujskov na gnezdo in doba med praritvama na kmetijah v Sloveniji v letu 2022	33
3.9	Število krmnih dni na živorojenega pujska in doba med praritvama na kmetijah v Sloveniji v letu 2022	34
3.10	Dolžina interim obdobja in število živorojenih pujskov pri starih svinjah v letu 2022	34
3.11	Porazdelitev dolžine interim obdobja na kmetijah v Sloveniji v letu 2022 v primerjavi s standardi	34
3.12	Dolžina interim obdobja in število živorojenih pujskov pri starih svinjah na kmetijah v Sloveniji v letu 2022	35
3.13	Dolžina neproduktivnih faz pri starih svinjah na kmetijah v Sloveniji v letu 2022	35
3.14	Velikost gnezda na kmetijah v letu 2022	35
3.15	Delež izgubljenih pujskov na kmetijah po zavodih v Sloveniji v letu 2022	36
3.16	Delež pregonitev in doba od pripusta do pregonitve na kmetijah v Sloveniji v letu 2022	36
3.17	Porazdelitev dolžine brejosti na kmetijah v Sloveniji v letu 2022 v primerjavi s standardi	36
3.18	Lastna cena odstavljenega pujska v EUR na kmetijah v Sloveniji v letu 2022	37
3.19	Dodatni stroški neproduktivnih faz na gnezdo v EUR na kmetijah v Sloveniji v letu 2022	37
3.20	Dodatni stroški neproduktivnih faz na kmetijo v letu 2022	37
3.21	Število živorojenih pujskov pri mladicah po letih	38
3.22	Starost mladic ob praritvi po letih	38
3.23	Starost mladic ob izločitvi po letih	38
3.24	Delež izločenih mladic pred (prazni znaki) in po (obarvani del) pripustih ter skupaj (polni znaki) po letih	39
3.25	Število krmnih dni na živorojenega pujska pri mladicah po letih	39
3.26	Dolžina neproduktivnih faz pri mladicah po letih	39
3.27	Število živorojenih pujskov pri starih svinjah po letih	40
3.28	Dolžina interim obdobja pri starih svinjah po letih	40
3.29	Delež izločenih starih svinj po letih	40
3.30	Doba od praritve do izločitve pri starih svinjah po letih	41
3.31	Dolžina neproduktivnih faz pri starih svinjah po letih	41

3.32	Število krmnih dni na živorojenega pujska pri starih svinjah po letih	41
3.33	Dolžina laktacije, poodstavitvenega premora (obravni del) in servis periode pri starih svinjah po letih	42
3.34	Število odstavljenih pujskov na gnezdo po letih	42
3.35	Delež izgubljenih pujskov po letih	42
3.36	Število gnezd na svinjo letno po letih	43
3.37	Število krmnih dni na odstavljenega pujska po letih	43
3.38	Število živorojenih in odstavljenih pujskov na gnezdo pri mladicah in starih svinjah na kmetijah v Sloveniji po letih	43
3.39	Dolžina uspešnega reprodukcijskega ciklusa pri mladicah in starih svinjah na kmetijah v Sloveniji po letih	44
3.40	Dolžina neuspešnega reprodukcijskega ciklusa na kmetijah v Sloveniji po letih	44
3.41	Dolžina poodstavitvenega premora in interim obdobja pri prvesnicah in svinjah po 2. prasiatvi na kmetijah v Sloveniji po letih	44
3.42	Delež prasitev pri mladicah in starih svinjah na kmetijah v Sloveniji po letih	45
3.43	Število KD (krmnih dni) na gnezdo pri mladicah in starih svinjah (polna črta) ter na živorojenega pujska pri mladicah in starih svinjah (črtkana črta) na kmetijah v Sloveniji po letih	45
3.44	Število živorojenih pujskov in število KD (krmnih dni) na živorojenega pujska po zaporednih prasiatvah v letu 2022	45
3.45	Remont po letih	46
3.46	Starostna struktura črede po zaporedni prasiatvi po letih	46
3.47	Starostna struktura črede po zaporednih prasiatvah v letu 2022	46

Oznake

DOP	doba od odbire do prasiatve
DMP	doba med prasiatvama
IO	interim obdobje
PP	podstavitveni premor
DOI	doba od odbire do izločitve
DI	doba od prasiatve do izločitve
DPI	doba od pripusta do izločitve
DPP	doba od pripusta do pregonitve
kDMP	korigirana doba med prasiatvama
kDOP	korigirana doba od odbire do prasiatve
G_s	število gnezd na svinjo v proizvodnem obdobju
G_L	število gnezd na svinjo letno
$P_{\check{z}}$	število živorojenih pujskov
P_o	število odstavljenih pujskov
KD	krmni dnevi
PF	produktivne faze
št.	število
Sk.	skupaj
gn.	gnezdo
prip. (pr.)	pripust
pras.	prasiatev
Izl.	izločitev, izločenih
Usp.	uspešni
Lakt.	laktacija
Preg.	pregonitev

Šifrant izločitev

8	izostanek bukanja
9	nebreje-nepregonjene
10	večkratna pregonitev

Opombe: Zaradi nepravočasno prejetih podatkov v analizo plodnosti svinj na kmetijah niso vključene reje: 30091, 31303, 31059, 31304, 31388, 32007, 31025, 41784 in 31306.

Poglavje 1

Primerjava plodnosti na kmetijah v letu 2022

1.1 Velikost gnezda

Tabela 1.1: Velikost gnezda na kmetijah

Rejec	MLADICE			STARE SVINJE						SKUPAJ		
	Št. pras.	DOP (dni)	P _z /gn.	Št. pras.	DMP (dni)	Lakt. (dni)	IO (dni)	PP (dni)	P _z /gn.	Št. pras.	Pol gn.	Izgube (%)
30023	13	222.9	8.00	62	171.3	31.6	10.5	24.4	10.63	75	8.40	17.4
30037	11	150.9	11.55	65	178.3	39.0	12.5	23.4	10.65	76	9.87	8.4
30077	15	175.5	10.40	124	179.8	31.9	9.0	31.5	12.14	139	9.62	19.5
30152	27	189.3	9.30	162	167.4	30.0	8.8	22.5	10.69	189	10.07	4.0
30504	42	134.0	11.55	210	152.8	28.0	6.2	9.1	13.21	252	10.92	15.6
30511	7	110.0	10.57	35	223.4	35.4	25.4	72.6	11.34	42	9.07	19.1
30745	0			20	173.1	29.0	19.9	28.9	11.20	20	10.90	2.7
40002	12	148.5	11.42	39	162.6	34.1	7.6	11.2	12.38	51	11.57	4.8
40005	14	131.1	10.71	108	158.0	30.6	6.9	11.2	10.52	122	9.76	7.4
40017	36	177.8	10.39	97	205.1	33.7	10.9	55.5	11.90	133	9.11	20.8
40164	11	138.9	11.18	43	197.9	32.5	6.0	49.6	11.42	54	9.39	17.4
40222	16	133.4	11.56	95	154.8	28.2	5.6	11.1	13.43	111	10.72	18.6
40267	17	161.4	8.18	52	167.3	29.7	8.4	21.0	10.46	69	7.45	24.7
40504	5		11.00	9	282.9	37.3	28.6	129.2	10.44	14	5.36	49.7
40545	15	207.5	11.00	68	193.4	33.8	35.4	45.3	10.75	83	9.84	8.8
40620	31	136.6	10.13	127	161.7	33.9	7.7	11.5	11.31	158	9.89	10.7
40649	8	140.6	13.88	49	154.0	28.2	5.5	9.7	13.41	57	12.21	9.4
40825	19	161.6	10.26	30	184.1	35.7	10.9	33.4	11.73	49	9.90	11.3
40895	15	145.7	11.27	72	157.0	25.9	6.6	15.7	12.17	87	9.89	17.7
31007	20	153.3	11.95	84	158.4	34.8	4.6	8.0	12.73	104	11.47	8.8
31026	16	147.3	10.94	89	165.2	36.3	8.0	13.3	12.28	105	9.77	19.1
31060	8	141.1	11.13	42	163.1	31.5	6.7	17.1	11.74	50	9.42	19.1
31084	2	215.0	9.50	49	160.7	30.5	9.8	14.4	12.82	51	10.45	17.6
31301	27	264.2	9.59	224	169.7	28.3	16.6	25.3	10.55	251	8.45	19.1
31305	36	143.8	10.64	272	159.4	26.9	5.6	16.7	11.64	308	11.45	0.7
31309	17	147.9	12.00	97	156.7	33.2	5.8	7.7	12.72	114	11.61	8.0
31311	1	374.0	9.00	90	169.9	30.7	13.2	23.6	12.23	91	10.32	15.4
31312	23	152.2	10.74	98	158.5	31.9	7.3	10.9	11.36	121	10.09	10.2
31313	5		8.40	33	192.2	43.2	27.2	34.5	9.76	38	7.08	26.1
31314	0			43	166.4	31.4	17.5	19.2	12.86	43	11.00	14.5
31316	21	155.3	9.86	98	163.5	29.3	9.3	19.0	11.01	119	9.50	12.1
31353	13	159.6	8.92	75	156.8	31.8	6.2	9.2	12.55	88	10.34	13.9
31358	19	188.0	12.47	136	153.4	23.6	6.7	14.9	13.45	155	9.91	25.7
31359	0			35	157.5	36.1	6.2	7.4	12.34	35	10.97	11.1
31387	93	161.0	10.12	139	170.4	40.3	8.5	14.1	10.62	232	9.48	9.0
31419	11	139.6	8.73	27	184.3	37.6	19.3	33.7	10.44	38	9.16	7.9
31620	3	126.7	14.33	30	152.2	30.7	5.6	5.6	13.37	33	10.48	22.1
31905	24	157.1	11.29	77	165.6	30.7	9.4	8.2	11.70	101	10.50	9.5
31984	15	147.1	9.67	50	180.0	33.0	5.4	30.8	10.04	65	8.32	16.4
41638	30	276.7	11.03	165	158.6	26.0	5.5	16.9	10.90	195	10.61	2.9
41680	53	186.8	11.34	196	149.2	26.9	6.1	8.3	13.06	249	10.71	15.7
32001	4	173.3	12.75	31	174.0	31.8	19.4	27.4	13.39	35	11.54	13.3

Rejec	MLADICE			STARE SVINJE						SKUPAJ		
	Št. pras.	DOP (dni)	P _z /gn.	Št. pras.	DMP (dni)	Lakt. (dni)	IO (dni)	PP (dni)	P _z /gn.	Št. pras.	P _o /gn.	Izgube (%)
32003	2	204.5	11.00	9	235.2	30.6	83.7	90.3	13.44	11	12.00	7.7
32010	14	211.2	10.21	37	172.0	28.8	9.2	27.8	11.89	51	9.22	19.4
33310	18	175.1	11.56	115	163.8	32.9	10.1	14.1	12.22	133	10.86	10.4
Skupaj	789	166.3	10.64	3808	165.6	30.7	9.4	19.3	11.80	4597	10.09	13.0

1.2 Analiza pripustov

Tabela 1.2: Analiza pripustov mladic na kmetijah

Rejec	S K U P A J							PRVI PRIPUST				DRUGI IN VIŠJI			
	Št. prip.	Usp. prip. (%)	Izl. po prip. (%)	Preg. (%)	DPI (dni)	DPP (dni)	P ₂ / prip.	Št. prip.	Prvi (%)	Usp. (%)	P ₂ / prip.	Št. prip.	≥2 (%)	Usp. (%)	P ₂ / prip.
30023	25	56.0		44.0		77.2	4.6	15	60.0	60.0	4.5	10	40.0	50.0	4.7
30037	17	76.5	11.8	11.8	103.5	33.0	8.8	16	94.1	81.3	9.4	1	5.9		
30077	33	45.5	30.3	24.2	118.1	35.6	4.7	21	63.6	52.4	5.1	12	36.4	33.3	4.1
30152	52	53.9	7.7	38.5	148.3	52.6	5.1	27	51.9	63.0	6.1	25	48.1	44.0	3.9
30504	46	76.1	6.5	17.4	67.0	55.0	9.4	38	82.6	79.0	10.1	8	17.4	62.5	6.1
30511	0							0				0			
30745	0							0				0			
40002	146	75.3	7.5	16.4	66.3	32.2	8.6	122	83.6	75.4	9.1	24	16.4	75.0	7.5
40005	0							0				0			
40017	57	49.1	8.8	40.4	113.6	53.0	5.3	34	59.7	47.1	5.0	23	40.4	52.2	5.8
40164	138	75.4	3.6	20.3	49.4	24.9	7.5	116	84.1	75.0	7.5	22	15.9	77.3	
40222	72	44.4	13.9	38.9	59.5	26.5	5.1	43	59.7	44.2	5.1	29	40.3	44.8	5.1
40267	205	63.9	12.7	22.9	36.9	33.7	5.2	162	79.0	62.4	5.5	43	21.0	69.8	5.2
40504	5	100.0					11.0	5	100.0	100.0	11.0	0			
40545	29	48.3	10.3	41.4	137.7	58.2	5.5	16	55.2	56.3	5.8	13	44.8	38.5	5.1
40620	33	93.9		6.1		25.5	9.5	32	97.0	93.8	9.5	1	3.0	100.0	10.0
40649	1	100.0					17.0	0				1	100.0	100.0	17.0
40825	33	51.5	12.1	36.4	137.3	24.9	5.3	22	66.7	50.0	5.7	11	33.3	54.6	4.6
40895	8	62.5		37.5		85.7	8.6	5	62.5	60.0	8.4	3	37.5	66.7	9.0
31007	74	67.6	23.0	9.5	30.4	47.9	8.5	70	94.6	70.0	8.8	4	5.4	25.0	3.3
31026	2	100.0					11.5	1	50.0	100.0	10.0	1	50.0	100.0	13.0
31060	110	61.8	28.2	10.0	84.8	27.6	6.8	98	89.1	62.2	6.4	12	10.9	58.3	7.0
31084	5	80.0		20.0		55.0	10.0	3	60.0	66.7	7.3	2	40.0	100.0	14.0
31301	37	73.0	5.4	16.2	205.0	71.2	7.0	32	86.5	78.1	7.4	5	13.5	40.0	4.2
31305	50	72.0	8.0	20.0	43.0	66.7	7.7	41	82.0	80.5	8.5	9	18.0	33.3	4.0
31309	152	88.2	9.9	2.0	45.3	28.3	10.6	148	97.4	89.2	10.8	4	2.6	50.0	5.5
31311	1	100.0					9.0	0				1	100.0	100.0	9.0
31312	46	56.5	23.9	17.4	125.9	32.3	6.0	37	80.4	54.1	5.6	9	19.6	66.7	7.7
31313	9	55.6	22.2	22.2	83.5	172.5	4.7	8	88.9	50.0	3.8	1	11.1	100.0	12.0
31314	3		66.7	33.3	154.0	20.0		1	33.3			2	66.7		
31316	389	81.0	9.0	9.8	64.8	46.3	8.0	353	90.8	80.2	7.6	36	9.3	88.9	9.5
31353	19	57.9	26.3	15.8	83.8	50.3	4.8	16	84.2	62.5	5.2	3	15.8	33.3	3.0
31358	33	60.6	15.2	24.2	100.2	66.4	7.4	25	75.8	68.0	8.2	8	24.2	37.5	5.0
31359	0							0				0			
31387	105	61.0	8.6	29.5	94.2	44.0	5.6	74	70.5	55.4	4.8	31	29.5	74.2	7.5
31419	1	100.0					10.0	0				1	100.0	100.0	10.0
31620	0							0				0			
31905	4	100.0					13.5	3	75.0	100.0	14.7	1	25.0	100.0	10.0
31984	0							0				0			
41638	58	51.7	5.2	39.7	117.3	75.4	5.7	31	53.5	41.9	4.7	27	46.6	63.0	6.9
41680	100	37.0	10.0	52.0	34.4	39.8	4.2	51	51.0	47.1	5.0	49	49.0	26.5	3.3
32001	3	100.0					13.7	3	100.0	100.0	13.7	0			
32003	5	60.0	40.0		306.5		6.6	4	80.0	75.0	8.3	1	20.0		
32010	43	44.2	18.6	37.2	111.6	38.3	4.5	29	67.4	44.8	4.7	14	32.6	42.9	4.2
33310	27	88.9	7.4	3.7	58.0	40.0	10.3	25	92.6	92.0	10.6	2	7.4	50.0	7.0
Skupaj	2176	67.4	11.3	20.6	76.7	44.0	7.2	1727	79.4	70.2	7.4	449	20.6	56.6	6.1

Tabela 1.3: Analiza pripustov starih svinj na kmetijah

Rejec	S K U P A J							PRVI PRIPUST				DRUGI IN VIŠJI			
	Št. prip.	Usp. prip. (%)	Izl. po prip. (%)	Preg. (%)	DPI (dni)	DPP (dni)	P _ž / prip.	Št. prip.	Prvi (%)	Usp. (%)	P _ž / prip.	Št. prip.	≥2 (%)	Usp. (%)	P _ž / prip.
30023	95	69.5	7.4	23.2	151.4	62.1	7.5	73	76.8	74.0	8.1	22	23.2	54.6	5.4
30037	102	63.7	7.8	26.5	92.4	34.1	6.8	71	69.6	71.8	7.7	31	30.4	45.2	4.7
30077	191	64.9	13.1	22.0	104.2	41.8	7.9	135	70.7	70.4	8.7	56	29.3	51.8	5.9
30152	265	63.8	7.2	29.1	117.1	50.7	6.8	195	73.6	70.3	7.6	70	26.4	45.7	4.7
30504	232	87.5	3.0	9.5	73.1	35.2	11.5	209	90.1	90.0	11.7	23	9.9	65.2	9.3
30511	50	70.0	4.0	14.0	144.5	94.1	7.9	38	76.0	68.4	8.2	12	24.0	75.0	7.2
30745	38	52.6	34.2	13.2	100.1	19.8	5.9	31	81.6	48.4	5.3	7	18.4	71.4	8.6
40002	61	65.6	23.0	11.5	61.2	27.9	8.1	54	88.5	64.8	8.2	7	11.5	71.4	7.9
40005	136	81.6	5.2	12.5	107.3	45.7	8.6	121	89.0	83.5	8.7	15	11.0	66.7	7.3
40017	203	46.8	9.9	37.9	85.1	64.3	5.6	119	58.6	47.1	5.4	84	41.4	46.4	5.8
40164	93	46.2	4.3	48.4	111.8	44.6	5.3	48	51.6	47.9	5.1	45	48.4	44.4	5.4
40222	133	72.2	9.0	18.8	61.9	23.6	9.7	103	77.4	79.6	10.7	30	22.6	46.7	6.6
40267	105	50.5	15.2	34.3	69.6	41.1	5.3	70	66.7	54.3	5.8	35	33.3	42.9	4.4
40504	21	47.6	14.3	28.6	23.7	80.0	5.0	10	47.6	30.0	3.0	11	52.4	63.6	6.7
40545	87	74.7	4.6	20.7	110.0	35.7	8.1	67	77.0	76.1	8.2	20	23.0	70.0	7.6
40620	147	88.4	2.7	8.8	102.8	60.5	10.0	137	93.2	88.3	10.0	10	6.8	90.0	10.8
40649	55	90.9		9.1		36.4	12.2	49	89.1	91.8	12.3	6	10.9	83.3	11.5
40825	79	38.0	16.5	45.6	54.6	34.8	4.5	42	53.2	47.6	5.9	37	46.8	27.0	2.8
40895	98	73.5	4.1	22.5	50.0	60.2	8.9	79	80.6	77.2	9.2	19	19.4	57.9	7.9
31007	98	85.7	7.1	7.1	51.0	51.6	10.9	90	91.8	87.8	11.2	8	8.2	62.5	8.1
31026	104	83.7	3.9	10.6	143.3	59.6	10.3	94	90.4	84.0	10.2	10	9.6	80.0	11.4
31060	58	70.7	10.3	17.2	152.5	46.5	8.4	46	79.3	76.1	9.4	12	20.7	50.0	4.8
31084	65	75.4	6.2	18.5	153.0	35.6	9.7	53	81.5	81.1	10.4	12	18.5	50.0	6.5
31301	328	69.5	7.0	22.0	105.1	66.0	7.4	260	79.3	76.9	8.1	68	20.7	41.2	4.5
31305	349	77.9	6.3	14.9	79.6	63.6	9.1	293	84.0	79.9	9.3	56	16.1	67.9	8.0
31309	110	86.4	5.5	8.2	66.2	30.2	11.0	101	91.8	88.1	11.2	9	8.2	66.7	8.2
31311	133	66.9	8.3	24.8	130.7	35.6	8.2	97	72.9	66.0	8.1	36	27.1	69.4	8.4
31312	125	78.4	12.8	7.2	136.6	84.2	8.9	115	92.0	82.6	9.4	10	8.0	30.0	3.5
31313	59	57.6	17.0	23.7	198.7	67.6	5.5	48	81.4	62.5	5.9	11	18.6	36.4	3.4
31314	54	79.6	9.3	9.3	124.6	24.0	10.2	48	88.9	83.3	10.7	6	11.1	50.0	6.5
31316	134	72.4	6.0	21.6	69.1	50.8	8.0	107	79.9	74.8	8.3	27	20.2	63.0	6.6
31353	82	89.0	7.3	3.7	101.8	56.7	11.2	79	96.3	88.6	11.2	3	3.7	100.0	10.7
31358	163	83.4	3.1	10.4	83.6	67.6	11.2	144	88.3	85.4	11.5	19	11.7	68.4	9.4
31359	50	70.0	28.0	2.0	152.6	43.0	8.6	49	98.0	69.4	8.5	1	2.0	100.0	15.0
31387	179	77.1	6.7	15.1	90.8	44.8	8.2	154	86.0	77.3	8.3	25	14.0	76.0	7.4
31419	46	60.9	15.2	21.7	57.7	54.3	6.4	33	71.7	63.6	6.6	13	28.3	53.9	5.6
31620	36	83.3	16.7		140.3		11.1	36	100.0	83.3	11.1	0			
31905	108	71.3	5.6	13.0	95.5	58.4	8.3	97	89.8	75.3	8.8	11	10.2	36.4	4.5
31984	83	60.2	7.2	28.9	79.2	62.4	6.1	54	65.1	74.1	7.4	29	34.9	34.5	3.6
41638	269	61.3	7.8	30.1	126.7	72.3	6.7	203	75.5	73.4	8.1	66	24.5	24.2	2.4
41680	237	78.1	7.6	13.5	56.0	48.7	10.2	210	88.6	85.2	11.2	27	11.4	22.2	2.5
32001	45	73.3	6.7	17.8	162.3	46.5	9.9	37	82.2	73.0	9.8	8	17.8	75.0	10.6
32003	11	81.8	9.1	9.1	180.0	35.0	11.0	9	81.8	88.9	12.1	2	18.2	50.0	6.0
32010	67	55.2	13.4	31.3	122.1	56.3	6.6	49	73.1	57.1	6.9	18	26.9	50.0	5.6
33310	138	84.1	5.1	10.9	79.3	42.8	10.3	120	87.0	87.5	10.6	18	13.0	61.1	8.1
Skupaj	5322	71.5	8.0	19.3	100.1	52.6	8.4	4277	80.4	76.6	9.1	1045	19.6	50.7	5.9

Tabela 1.4: Distribucija pregonitev na kmetijah

Rejec	MLADICE					STARE SVINJE				
	Št. preg.	DPP (dni)	do 25. dne (%)	25-40 dni (%)	po 40. dnevu (%)	Št. preg.	DPP (dni)	do 25. dne (%)	25-40 dni (%)	po 40. dnevu (%)
30023	11	77.2	9.1	9.1	81.8	22	62.1	22.7	22.7	54.6
30037	2	33.0	50.0	0.0	50.0	27	34.1	59.3	18.5	22.2
30077	8	35.6	62.5	25.0	12.5	42	41.8	61.9	9.5	28.6
30152	20	52.6	30.0	10.0	60.0	77	50.7	23.4	14.3	62.3
30504	8	55.0	25.0	0.0	75.0	22	35.2	27.3	31.8	40.9
30511	0					7	94.1	0.0	0.0	100.0
30745	0					5	19.8	100.0	0.0	0.0
40002	24	32.2	50.0	25.0	25.0	7	27.9	42.9	57.1	0.0
40005	0					17	45.7	64.7	5.9	29.4
40017	23	53.0	21.7	17.4	60.9	77	64.3	22.1	18.2	59.7
40164	28	24.9	85.7	0.0	14.3	45	44.6	26.7	26.7	46.7
40222	28	26.5	60.7	17.9	21.4	25	23.6	72.0	20.0	8.0
40267	47	33.7	46.8	36.2	17.0	36	41.1	36.1	16.7	47.2
40504	0					6	80.0	16.7	16.7	66.7
40545	12	58.2	25.0	25.0	50.0	18	35.7	33.3	22.2	44.4
40620	2	25.5	50.0	50.0	0.0	13	60.5	23.1	38.5	38.5
40649	0					5	36.4	40.0	20.0	40.0
40825	12	24.9	66.7	16.7	16.7	36	34.8	66.7	11.1	22.2
40895	3	85.7	0.0	66.7	33.3	22	60.2	0.0	50.0	50.0
31007	7	47.9	0.0	42.9	57.1	7	51.6	14.3	0.0	85.7
31026	0					11	59.6	36.4	0.0	63.6
31060	11	27.6	45.5	45.5	9.1	10	46.5	20.0	30.0	50.0
31084	1	55.0	0.0	0.0	100.0	12	35.6	41.7	33.3	25.0
31301	6	71.2	16.7	0.0	83.3	72	66.0	29.2	15.3	55.6
31305	10	66.7	20.0	20.0	60.0	52	63.6	21.2	19.2	59.6
31309	3	28.3	33.3	33.3	33.3	9	30.2	66.7	11.1	22.2
31311	0					33	35.6	57.6	6.1	36.4
31312	8	32.3	62.5	0.0	37.5	9	84.2	11.1	11.1	77.8
31313	2	172.5	50.0	0.0	50.0	14	67.6	21.4	21.4	57.1
31314	1	20.0	100.0	0.0	0.0	5	24.0	60.0	40.0	0.0
31316	38	46.3	50.0	5.3	44.7	29	50.8	44.8	10.3	44.8
31353	3	50.3	33.3	0.0	66.7	3	56.7	0.0	33.3	66.7
31358	8	66.4	25.0	0.0	75.0	17	67.6	5.9	5.9	88.2
31359	0					1	43.0	0.0	0.0	100.0
31387	31	44.0	38.7	16.1	45.2	27	44.8	33.3	33.3	33.3
31419	0					10	54.3	30.0	10.0	60.0
31620	0					0				
31905	0					14	58.4	14.3	7.1	78.6
31984	0					24	62.4	20.8	8.3	70.8
41638	23	75.4	4.4	0.0	95.7	81	72.3	1.2	0.0	98.8
41680	52	39.8	19.2	9.6	71.2	32	48.7	0.0	6.3	93.8
32001	0					8	46.5	62.5	0.0	37.5
32003	0					1	35.0	0.0	100.0	0.0
32010	16	38.3	12.5	68.8	18.8	21	56.3	28.6	19.1	52.4
33310	1	40.0	0.0	100.0	0.0	15	42.8	53.3	13.3	33.3
Skupaj	449	44.0	37.9	17.8	44.3	1026	52.6	30.7	16.0	53.3

1.3 Analiza reprodukcijskega ciklusa

Tabela 1.5: Starost mladic ob pravitvi in število krmnih dni na živorojenega pujska pri mladicah na kmetijah

Rejec	Št. pras.	Starost ob		do 360 dni (%)	361-420 dni (%)	≥421 dni (%)	Izl. (%)	pred prip. (%)	po prip. (%)	Starost ob izl.	kDOP (dni)	KD/ P_z
		1.prip.	pras.									
30023	10	253.7	393.1	60.0	10.0	30.0	8.3		100.0	532.0	226.3	31.4
30037	11	234.4	350.9	72.7	27.3	0.0	38.1	50.0	50.0	359.3	245.9	21.3
30077	21	236.7	360.8	61.9	38.1	0.0	36.4	50.0	50.0	339.0	240.2	22.9
30152	28	233.0	377.0	57.2	21.4	21.4	17.7		100.0	428.5	225.9	23.6
30504	44	209.7	330.0	88.6	11.4	0.0	8.3	25.0	75.0	308.5	139.9	12.5
30511	9	193.9	330.0	88.9	0.0	11.1					130.0	11.9
30745	0											
40002	12	219.8	348.5	66.7	33.3	0.0	19.9	44.8	55.2	291.9	164.8	14.4
40005	19	206.1	326.4	100.0	0.0	0.0	9.5		100.0	366.5	143.9	13.4
40017	42	211.9	355.0	69.0	14.3	16.7	15.7		100.0	391.3	191.4	18.4
40164	10	215.8	333.8	100.0	0.0	0.0	18.4	76.9	23.1	317.2	175.6	15.8
40222	14	212.3	335.8	92.9	7.1	0.0	30.8	37.5	62.5	274.3	162.1	14.3
40267	21	238.0	383.5	38.1	38.1	23.8	16.8	37.5	62.5	242.2	147.0	16.9
40504	0											
40545	14	254.9	394.1	35.7	35.7	28.6	17.7		100.0	532.3	265.3	24.4
40620	24	220.1	337.8	87.5	12.5	0.0					137.8	13.6
40649	8	212.0	340.6	87.5	0.0	12.5	11.1		100.0	278.0	150.4	10.8
40825	20	241.8	366.5	55.0	35.0	10.0	23.1	50.0	50.0	384.0	221.7	21.6
40895	17	202.1	336.8	88.2	5.9	5.9					136.8	11.9
31007	23	233.6	351.9	91.3	8.7	0.0	33.0	35.5	64.5	256.9	173.1	13.6
31026	14	216.8	341.7	78.6	21.4	0.0					141.7	12.8
31060	8	210.0	341.1	75.0	25.0	0.0	39.6	31.0	69.0	283.5	172.5	15.5
31084	3	282.7	437.0	0.0	33.3	66.7					237.0	20.9
31301	3	214.0	352.0	66.7	33.3	0.0					152.0	15.7
31305	33	223.3	343.4	81.8	15.2	3.0	13.2		100.0	353.8	166.7	15.8
31309	20	228.8	345.5	80.0	20.0	0.0	48.2	91.1	8.9	221.6	156.4	13.3
31311	0											
31312	25	226.4	348.7	56.0	44.0	0.0	40.5	35.3	64.7	329.9	237.0	22.2
31313	0											
31314	1	438.0	571.0			100.0	50.0		100.0	557.5	1086.0	77.6
31316	20	225.2	355.5	75.0	20.0	5.0	15.3	32.1	67.9	289.2	155.7	15.7
31353	13	238.0	359.6	69.2	23.1	7.7	51.9	64.3	35.7	319.1	287.9	32.3
31358	20	252.9	390.6	25.0	55.0	20.0	25.9	57.1	42.9	317.9	231.8	18.9
31359	0											
31387	95	233.9	362.0	58.9	33.7	7.4	21.5	69.2	30.8	292.7	187.4	18.5
31419	11	210.1	339.6	90.9	0.0	9.1					139.6	16.0
31620	11	211.8	327.7	100.0	0.0	0.0					127.7	10.3
31905	22	241.3	357.1	68.2	22.7	9.1	12.0	66.7	33.3	400.3	184.4	16.4
31984	15	228.7	347.1	73.3	20.0	6.7					147.1	15.2
41638	23	292.9	456.9	8.7	8.7	82.6	4.0		100.0	695.0	278.4	25.9
41680	45	255.3	390.0	35.6	42.2	22.2	34.3	45.8	54.2	335.8	266.6	23.6
32001	5	260.0	385.2	20.0	60.0	20.0	58.3	100.0		410.6	480.0	39.3
32003	4	259.0	374.5	75.0	0.0	25.0	44.4	50.0	50.0	572.3	457.4	38.1
32010	13	275.5	405.5	7.7	61.5	30.8	55.6	60.0	40.0	373.6	417.2	39.6
33310	18	256.0	375.8	22.2	72.2	5.6	39.5	100.0		322.2	254.5	21.8
Skupaj	769	232.3	361.0	64.0	24.7	11.3	24.8	54.9	45.1	292.8	178.8	16.7

Tabela 1.6: Doba med prasiatvama in število krmnih dni na pujska na kmetijah

Rejec	Št. pras.	DMP (dni)	do 160 dni (%)	161-200 dni (%)	≥201 dni (%)	Izl. (%)	DI (dni)	kDMP (dni)	G_L	P_Z / leto	KD/ P_Z
30023	64	169.8	71.9	15.6	12.5	10.7	249.8	201.0	1.82	19.6	18.7
30037	68	174.7	35.3	50.0	14.7	12.7	143.2	199.6	1.83	19.5	18.8
30077	119	165.8	69.7	23.5	6.7	36.3	168.9	263.7	1.38	17.0	21.4
30152	168	168.0	72.6	12.5	14.9	14.1	171.3	196.5	1.86	20.0	18.2
30504	200	153.4	86.5	11.5	2.0	16.0	67.8	166.3	2.20	29.7	12.3
30511	29	198.7	51.7	20.7	27.6	18.2	117.8	231.2	1.58	18.0	20.3
30745	21	160.1	61.9	33.3	4.8	64.4	113.5	365.4	1.00	10.8	33.8
40002	40	162.5	60.0	40.0	0.0	41.2	85.9	222.6	1.64	20.3	18.0
40005	108	157.3	73.1	25.9	0.9	16.9	83.0	174.2	2.10	22.1	16.5
40017	87	192.4	42.5	28.7	28.7	25.0	124.7	239.7	1.52	18.3	19.9
40164	43	189.7	51.2	23.3	25.6	23.2	152.4	235.7	1.55	18.4	19.9
40222	88	155.0	77.3	20.5	2.3	20.7	89.8	178.4	2.05	27.4	13.4
40267	56	166.8	60.7	25.0	14.3	26.0	122.2	210.4	1.73	19.0	19.1
40504	4	179.3	25.0	50.0	25.0	11.8	156.5	257.5	1.42	14.9	24.5
40545	69	192.6	15.9	49.3	34.8	10.3	117.5	206.2	1.77	19.1	19.2
40620	134	162.9	61.2	35.1	3.7	14.1	112.7	181.4	2.01	22.9	16.0
40649	51	153.8	90.2	5.9	3.9	13.6	39.0	159.9	2.28	30.3	12.0
40825	26	187.2	46.2	34.6	19.2	48.0	144.4	320.4	1.14	13.8	26.5
40895	77	166.3	77.9	11.7	10.4	17.0	80.1	182.9	2.00	24.3	15.1
31007	89	159.1	88.8	7.9	3.4	25.2	46.5	174.8	2.09	26.9	13.6
31026	87	163.9	64.4	28.7	6.9	11.1	107.6	179.1	2.04	25.0	14.6
31060	39	158.0	89.7	5.1	5.1	18.0	164.9	200.0	1.83	21.9	16.7
31084	49	160.0	77.6	16.3	6.1	15.5	146.7	186.9	1.95	24.8	14.7
31301	228	170.8	71.5	13.6	14.9	15.7	161.4	204.2	1.79	18.7	19.5
31305	258	157.4	82.6	10.5	7.0	13.4	95.1	172.2	2.12	24.8	14.7
31309	96	156.6	84.4	14.6	1.0	20.0	63.5	172.5	2.12	26.5	13.8
31311	88	169.1	52.3	40.9	6.8	13.7	150.3	193.0	1.89	23.2	15.7
31312	93	159.0	89.2	7.5	3.2	21.7	165.3	206.5	1.77	20.2	18.1
31313	34	185.8	26.5	52.9	20.6	29.4	251.7	308.9	1.18	11.2	32.6
31314	55	167.9	80.0	10.9	9.1	24.7	173.2	230.9	1.58	19.8	18.4
31316	96	163.1	77.1	11.5	11.5	22.6	83.4	187.4	1.95	21.4	17.1
31353	76	156.5	85.5	10.5	3.9	17.4	87.1	174.8	2.09	26.0	14.1
31358	141	154.6	87.2	4.3	8.5	11.7	56.3	164.6	2.22	30.4	12.0
31359	38	157.2	84.2	13.2	2.6	30.9	151.4	224.9	1.62	20.1	18.2
31387	140	172.2	30.0	62.1	7.9	14.1	99.6	188.5	1.94	20.6	17.7
31419	27	184.3	18.5	51.9	29.6	25.0	116.1	223.0	1.64	17.1	21.4
31620	31	152.2	100.0	0.0	0.0	45.6	149.8	277.9	1.31	17.5	20.9
31905	80	150.0	93.8	5.0	1.3	22.6	71.5	171.5	2.13	24.9	14.7
31984	51	175.4	70.6	15.7	13.7	20.0	134.5	209.7	1.74	17.3	21.1
41638	178	158.2	89.9	0.6	9.6	12.6	189.7	185.9	1.96	21.3	17.1
41680	202	149.6	94.6	4.0	1.5	19.7	70.5	168.3	2.17	28.5	12.8
32001	30	175.5	53.3	40.0	6.7	16.2	247.2	231.7	1.58	21.5	17.0
32003	8	207.8	0.0	75.0	25.0	23.1	223.3	291.5	1.25	15.8	23.1
32010	36	170.7	69.4	16.7	13.9	32.1	163.7	248.0	1.47	17.6	20.7
33310	108	164.3	67.6	29.6	2.8	17.6	79.8	181.3	2.01	24.4	15.0
Skupaj	3810	164.0	72.1	19.2	8.7	19.8	120.9	195.1	1.87	22.1	16.5

Tabela 1.7: Velikost gnezda ob rojstvu, gospodarnost priraje pujskov in delež letne obnove črede svinj na kmetijah

Rejec	Št. pras.	Št. izl.	$P_Z/gn.$	KD/gn.	G_L	KD/ P_Z	Št. svinj v čredi	Remont (%)	G_S
30023	74	9	10.27	204.4	1.79	19.9			
30037	79	18	10.77	207.0	1.76	19.2			
30077	140	81	12.04	260.2	1.40	21.6			
30152	196	34	10.60	200.7	1.82	18.9			
30504	244	42	13.07	161.5	2.26	12.4			
30511	38	8	11.29	207.2	1.76	18.4			
30745	21	38	10.81	365.4	1.00	33.8			
40002	52	57	12.17	179.5	2.03	14.8			
40005	127	24	10.57	169.6	2.15	16.1			
40017	129	41	11.50	223.9	1.63	19.5			
40164	53	39	11.70	192.0	1.90	16.4			
40222	102	39	13.07	173.7	2.10	13.3			
40267	77	68	10.38	159.1	2.29	15.3			
40504	4	2	10.50	257.5	1.42	24.5			
40545	83	11	10.78	216.2	1.69	20.1			
40620	158	22	11.18	174.8	2.09	15.6			
40649	59	9	13.37	158.6	2.30	11.9			
40825	46	30	11.30	277.5	1.32	24.6			
40895	94	16	12.03	174.6	2.09	14.5			
31007	112	61	12.83	174.1	2.10	13.6			
31026	101	11	12.07	173.9	2.10	14.4			
31060	47	51	11.81	182.9	2.00	15.5			
31084	52	9	12.62	189.8	1.92	15.1			
31301	231	44	10.46	203.5	1.79	19.5			
31305	291	45	11.56	171.5	2.13	14.8			
31309	116	147	12.38	163.1	2.24	13.2			
31311	88	14	12.27	193.0	1.89	15.7			
31312	118	43	11.25	212.9	1.71	18.9			
31313	34	15	9.47	308.9	1.18	32.6			
31314	56	22	12.55	246.2	1.48	19.6			
31316	116	84	10.81	163.2	2.24	15.1			
31353	89	30	11.92	191.4	1.91	16.1			
31358	161	26	13.52	173.0	2.11	12.8			
31359	38	17	12.39	224.9	1.62	18.2			
31387	235	49	10.43	188.1	1.94	18.0			
31419	38	9	9.95	198.9	1.84	20.0			
31620	42	26	13.07	238.5	1.53	18.3			
31905	102	27	11.60	174.2	2.09	15.0			
31984	66	13	9.89	195.5	1.87	19.8			
41638	201	27	10.84	196.5	1.86	18.1			
41680	247	74	12.80	186.2	1.96	14.6			
32001	35	13	13.43	267.1	1.37	19.9			
32003	12	7	12.42	355.3	1.03	28.6			
32010	49	42	11.61	308.4	1.18	26.6			
33310	126	38	12.06	194.2	1.88	16.1			
Skupaj	4579	1532	11.64	190.0	1.92	16.3			

Tabela 1.8: Dolžina laktacije in starostna struktura na kmetijah

Rejec	DOLŽINA LAKTACIJE							P R A S I T V E		
	Lakt. (dni)	do 14 dni (%)	15-19 dni (%)	20-24 dni (%)	25-29 dni (%)	30-34 dni (%)	≥35 dni (%)	prva (%)	2.-7. (%)	≥8 (%)
30023	31.4	2.7	0.0	4.0	22.7	44.0	26.7	13.8	79.3	6.9
30037	38.1	2.5	0.0	1.3	1.3	19.0	75.9	21.0	67.0	12.0
30077	31.9	4.7	0.5	3.7	18.9	39.5	32.6	14.8	71.3	13.9
30152	30.3	1.5	0.5	1.0	36.9	50.5	9.6	14.7	54.7	30.6
30504	28.4	0.0	0.4	10.5	57.1	25.6	6.3	16.8	71.7	11.5
30511	36.0	4.5	0.0	0.0	4.5	56.8	34.1	17.0	79.2	3.8
30745	28.2	3.4	1.7	5.1	18.6	32.2	39.0	0.0	71.2	28.8
40002	34.2	1.5	0.0	2.9	11.8	35.3	48.5	68.2	27.1	4.7
40005	31.2	10.8	2.3	5.4	13.1	26.9	41.5	13.9	60.3	25.8
40017	33.6	6.8	1.5	0.8	13.6	31.1	46.2	27.9	65.0	7.1
40164	32.6	1.8	0.0	0.0	16.1	60.7	21.4	71.6	21.3	7.1
40222	27.8	1.8	0.9	5.4	76.6	5.4	9.9	31.9	52.8	15.3
40267	29.6	9.1	1.3	7.8	31.2	29.9	20.8	78.7	19.1	2.2
40504	42.0	0.0	0.0	0.0	0.0	42.9	57.1	0.0	82.4	17.6
40545	33.8	2.6	0.0	0.0	3.8	46.2	47.4	17.9	62.1	20.0
40620	33.3	0.6	0.6	3.8	28.8	30.8	35.3	13.3	77.3	9.4
40649	28.1	0.0	0.0	8.5	57.6	33.9	0.0	13.2	58.9	27.9
40825	35.5	0.0	0.0	0.0	0.0	32.0	68.0	34.2	63.2	2.6
40895	25.6	4.3	1.1	8.5	76.6	9.6	0.0	15.3	77.5	7.2
31007	34.5	0.0	0.0	0.0	16.0	41.2	42.9	44.1	55.0	0.9
31026	36.1	1.0	0.0	0.0	5.1	34.3	59.6	12.4	66.4	21.2
31060	31.6	2.0	0.0	0.0	12.0	66.0	20.0	67.9	27.6	4.5
31084	30.6	1.7	0.0	0.0	6.9	91.4	0.0	4.9	78.7	16.4
31301	28.2	7.1	0.7	8.9	32.5	43.2	7.5	1.1	65.7	33.2
31305	26.9	0.0	0.7	13.1	74.8	6.0	5.4	11.3	68.5	20.2
31309	33.0	0.0	0.0	0.0	11.7	65.0	23.3	68.0	27.2	4.8
31311	30.6	13.7	0.0	1.0	13.7	37.3	34.3	0.0	78.4	21.6
31312	32.2	3.3	0.0	0.0	11.7	65.0	20.0	25.9	58.1	16.0
31313	43.4	3.9	0.0	2.0	5.9	11.8	76.5	0.0	72.5	27.5
31314	31.2	0.0	0.0	2.5	24.7	53.1	19.8	4.7	90.6	4.7
31316	29.6	4.8	0.0	4.8	38.7	43.5	8.1	74.7	23.1	2.2
31353	31.7	0.0	3.3	3.3	30.4	32.6	30.4	22.7	74.8	2.5
31358	23.2	13.5	7.4	27.0	46.6	4.3	1.2	14.2	66.9	18.9
31359	35.9	0.0	0.0	0.0	10.9	43.6	45.5	0.0	87.3	12.7
31387	40.3	3.1	0.6	2.5	8.6	8.0	77.3	42.6	56.0	1.4
31419	37.6	0.0	0.0	5.6	11.1	25.0	58.3	23.4	72.3	4.3
31620	30.7	1.8	0.0	0.0	5.3	91.2	1.8	16.2	76.4	7.4
31905	27.0	0.0	0.0	13.2	84.9	1.9	0.0	19.1	80.9	0.0
31984	33.5	4.6	0.0	1.5	15.4	40.0	38.5	18.8	61.2	20.0
41638	26.2	1.9	0.0	9.2	87.4	1.4	0.0	10.8	55.1	34.1
41680	26.8	2.4	0.4	5.5	85.8	5.9	0.0	21.6	77.2	1.2
32001	31.8	2.7	0.0	0.0	5.4	89.2	2.7	24.5	63.3	12.2
32003	30.5	0.0	0.0	0.0	0.0	100.0	0.0	40.9	59.1	0.0
32010	28.6	1.9	0.0	5.7	60.4	30.2	1.9	45.9	54.1	0.0
33310	33.1	0.8	0.0	0.0	7.6	63.4	28.2	22.5	61.5	16.0
Skupaj	30.7	3.2	0.7	5.4	35.6	32.2	22.9	32.3	56.0	11.7

Tabela 1.9: Interim obdobje na kmetijah

Rejec	PRVESNICE				STARE SVINJE			
	IO (dni)	do 12 dni (%)	12-40 dni (%)	≥41 dni (%)	IO (dni)	do 12 dni (%)	12-40 dni (%)	≥41 dni (%)
30023	18.9	76.0	12.0	12.0	6.1	98.6	0.0	1.4
30037	30.2	40.0	30.0	30.0	12.5	81.5	14.1	4.3
30077	16.2	78.6	14.3	7.1	8.6	90.4	4.4	5.2
30152	12.4	74.4	20.9	4.7	9.0	90.1	6.3	3.6
30504	7.0	89.4	10.6	0.0	5.7	97.6	1.8	0.6
30511	44.7	43.8	31.3	25.0	16.4	82.4	2.9	14.7
30745	14.2	71.4	21.4	7.1	15.7	83.3	8.3	8.3
40002	7.6	94.4	0.0	5.6	6.4	93.0	7.0	0.0
40005	9.9	85.0	10.0	5.0	6.4	95.7	4.3	0.0
40017	10.4	85.7	11.7	2.6	8.1	93.7	4.0	2.4
40164	5.6	97.2	2.8	0.0	6.5	94.7	5.3	0.0
40222	6.1	93.3	6.7	0.0	5.5	97.5	2.5	0.0
40267	11.8	76.0	16.0	8.0	7.7	91.3	6.3	2.5
40504	73.0	20.0	20.0	60.0	21.8	43.8	43.8	12.5
40545	32.8	12.0	52.0	36.0	29.3	19.4	58.1	22.6
40620	7.6	85.0	15.0	0.0	8.4	83.5	16.5	0.0
40649	5.3	100.0	0.0	0.0	5.8	95.7	4.3	0.0
40825	31.8	27.8	33.3	38.9	15.1	73.8	14.8	11.5
40895	5.7	96.2	3.8	0.0	7.1	93.1	4.2	2.8
31007	4.6	100.0	0.0	0.0	5.0	95.2	4.8	0.0
31026	5.9	100.0	0.0	0.0	7.6	93.6	3.2	3.2
31060	6.3	100.0	0.0	0.0	6.5	98.0	2.0	0.0
31084	25.3	50.0	25.0	25.0	7.9	91.8	6.6	1.6
31301	38.8	54.9	19.6	25.5	15.0	80.5	9.0	10.5
31305	7.4	86.3	13.7	0.0	5.8	93.3	6.7	0.0
31309	6.1	100.0	0.0	0.0	5.7	100.0	0.0	0.0
31311	28.1	45.5	27.3	27.3	7.2	93.0	6.0	1.0
31312	10.8	76.0	20.0	4.0	7.5	93.0	4.0	3.0
31313	4.7	100.0	0.0	0.0	30.7	67.9	19.6	12.5
31314	6.8	91.7	8.3	0.0	20.4	78.6	4.8	16.7
31316	16.2	77.4	6.5	16.1	5.6	100.0	0.0	0.0
31353	9.4	82.4	11.8	5.9	6.0	98.5	1.5	0.0
31358	9.6	92.3	3.8	3.8	7.7	92.7	3.6	3.6
31359					6.0	98.0	2.0	0.0
31387	11.4	72.7	24.7	2.6	6.4	92.2	7.8	0.0
31419	25.7	34.8	52.2	13.0	14.2	60.9	34.8	4.3
31620	6.0	100.0	0.0	0.0	5.5	100.0	0.0	0.0
31905	8.0	92.9	0.0	7.1	5.0	100.0	0.0	0.0
31984	6.8	88.0	12.0	0.0	5.3	100.0	0.0	0.0
41638	7.8	95.7	0.0	4.3	6.0	98.2	0.0	1.8
41680	5.5	100.0	0.0	0.0	6.4	97.7	1.7	0.6
32001	85.0	16.7	16.7	66.7	13.7	76.9	15.4	7.7
32003	171.4	0.0	0.0	100.0	28.0	0.0	100.0	0.0
32010	9.0	85.2	14.8	0.0	8.9	85.0	15.0	0.0
33310	10.8	77.1	20.0	2.9	10.4	79.6	19.4	1.0
Skupaj	14.3	78.8	13.6	7.7	8.8	90.1	6.9	3.0

Tabela 1.10: Poodstavitveni premor na kmetijah

Rejec	PRVESNICE					STARE SVINJE				
	Št. svinj	PP (dni)	do 12 dni (%)	13-60 dni (%)	≥61 dni (%)	Št. svinj	PP (dni)	do 12 dni (%)	13-60 dni (%)	≥61 dni (%)
30023	25	41.3	52.0	16.0	32.0	70	20.2	78.6	11.4	10.0
30037	10	49.2	20.0	40.0	40.0	92	29.5	57.6	22.8	19.6
30077	56	48.3	48.2	25.0	26.8	135	33.6	69.7	17.0	13.3
30152	43	40.5	48.8	16.3	34.9	222	24.0	69.8	18.0	12.2
30504	66	12.8	75.8	21.2	3.0	166	9.9	89.2	8.4	2.4
30511	16	119.6	25.0	25.0	50.0	34	38.3	70.6	5.9	23.5
30745	14	14.2	71.5	21.4	7.1	24	24.8	58.3	29.2	12.5
40002	18	10.3	83.3	16.7	0.0	43	9.8	81.4	18.6	0.0
40005	20	16.4	75.0	20.0	5.0	116	12.3	84.5	12.1	3.4
40017	77	78.1	40.2	13.0	46.8	126	42.9	60.3	18.3	21.4
40164	36	64.6	36.1	25.0	38.9	57	39.6	56.1	19.3	24.6
40222	15	8.5	86.7	13.3	0.0	118	15.4	72.9	22.9	4.2
40267	25	28.5	48.0	40.0	12.0	80	24.4	61.2	30.0	8.8
40504	5	183.4	0.0	0.0	100.0	16	73.1	31.2	31.3	37.5
40545	25	45.6	12.0	64.0	24.0	62	41.7	19.4	53.2	27.4
40620	20	13.3	80.0	15.0	5.0	127	12.6	77.9	19.7	2.4
40649	8	11.0	87.5	12.5	0.0	47	9.7	87.3	10.6	2.1
40825	18	79.8	27.7	16.7	55.6	61	40.5	42.7	31.1	26.2
40895	26	17.0	73.1	19.2	7.7	72	16.8	76.4	16.7	6.9
31007	36	12.6	86.1	8.3	5.6	62	7.4	90.3	9.7	0.0
31026	10	15.6	90.0	0.0	10.0	94	13.0	84.1	10.6	5.3
31060	9	25.1	66.7	22.2	11.1	49	24.3	79.6	6.1	14.3
31084	4	25.3	50.0	50.0	0.0	61	17.1	73.8	16.4	9.8
31301	51	71.7	41.1	21.6	37.3	277	31.2	65.7	15.2	19.1
31305	51	23.6	64.7	25.5	9.8	298	17.0	80.5	11.1	8.4
31309	25	12.0	84.0	12.0	4.0	85	6.9	94.1	5.9	0.0
31311	33	41.9	30.3	48.5	21.2	100	21.6	67.0	25.0	8.0
31312	25	18.1	68.0	28.0	4.0	100	13.5	86.0	8.0	6.0
31313	3	26.0	66.7	0.0	33.3	56	38.1	53.5	28.6	17.9
31314	12	6.8	91.7	8.3	0.0	42	25.2	69.0	16.7	14.3
31316	31	27.4	61.2	19.4	19.4	103	15.2	80.6	13.6	5.8
31353	17	17.1	70.6	17.6	11.8	65	7.1	97.0	1.5	1.5
31358	26	20.3	80.8	7.7	11.5	137	16.0	81.0	9.5	9.5
31359	0					50	6.9	96.0	4.0	0.0
31387	77	20.8	59.7	31.2	9.1	102	9.5	84.3	14.7	1.0
31419	23	44.8	26.1	34.8	39.1	23	26.2	47.9	47.8	4.3
31620	10	6.0	100.0	0.0	0.0	26	5.5	100.0	0.0	0.0
31905	28	20.4	75.0	7.1	17.9	80	7.3	93.8	6.3	0.0
31984	25	67.4	44.0	12.0	44.0	58	34.1	70.7	8.6	20.7
41638	47	26.0	76.6	2.1	21.3	222	34.6	73.8	0.5	25.7
41680	63	23.3	81.0	6.3	12.7	174	11.3	89.7	6.9	3.4
32001	6	88.7	16.7	33.3	50.0	39	25.2	58.9	30.8	10.3
32003	5	178.4	0.0	0.0	100.0	6	38.0	0.0	83.3	16.7
32010	27	40.3	55.6	18.5	25.9	40	23.1	72.5	15.0	12.5
33310	35	19.2	62.9	31.4	5.7	103	17.6	69.9	22.3	7.8
Skupaj	1202	36.2	59.1	20.4	20.5	4120	21.3	74.7	14.8	10.5

1.4 Analiza izločitve

Tabela 1.11: Izločitve svinj na kmetijah

Rejec	MLADICE						STARE SVINJE						
	Št. izl.	DOI (dni)	Izločitve		Vzrok izločitve			Št. izl.	DI (dni)	Izločitve		Vzrok izločitve	
			pred	po pr.	8	9	10			pred	po pr.	9	10
30023	2	427.0	50.0	50.0	50.0		50.0	10	201.8	20.0	80.0	20.0	40.0
30037	10	146.6	60.0	40.0	60.0	20.0	20.0	13	128.5	53.8	46.2	7.7	15.4
30077	13	208.9	23.1	76.9	7.7	30.8	38.5	64	129.5	64.1	35.9	12.5	14.1
30152	4	252.3	0.0	100.0			100.0	26	163.9	30.8	69.2	11.5	34.6
30504	4	108.5	50.0	50.0	50.0	25.0		39	65.0	76.9	23.1	12.8	5.1
30511	0							7	227.0	57.1	42.9	28.6	14.3
30745	0							35	119.7	62.9	37.1	31.4	2.9
40002	18	83.2	44.4	55.6	44.4	22.2	16.7	17	70.8	76.5	23.5	17.6	
40005	2	166.5	0.0	100.0		100.0		17	104.5	64.7	35.3	17.6	5.9
40017	8	191.3	0.0	100.0		12.5	37.5	36	154.9	41.7	58.3	19.4	30.6
40164	23	118.0	78.3	21.7	78.3	8.7	13.0	11	191.1	54.5	45.5	9.1	27.3
40222	13	88.7	23.1	76.9		7.7	69.2	17	87.5	58.8	41.2	5.9	29.4
40267	34	41.0	50.0	50.0	5.9	35.3	8.8	22	111.8	27.3	72.7	27.3	31.8
40504	0							2	156.5	0.0	100.0	50.0	
40545	2	426.0	0.0	100.0			100.0	9	162.4	55.6	44.4	33.3	11.1
40620	0							26	100.4	76.9	23.1	3.8	3.8
40649	1	78.0	0.0	100.0		100.0		8	39.3	100.0	0.0		
40825	5	219.8	40.0	60.0	40.0	20.0	40.0	25	142.0	52.0	48.0	12.0	32.0
40895	0							12	86.3	66.7	33.3	8.3	25.0
31007	22	75.9	27.3	72.7	13.6	36.4	13.6	29	57.8	69.0	31.0	17.2	
31026	0							15	109.3	60.0	40.0	33.3	
31060	36	90.2	22.2	77.8	19.4	69.4	8.3	12	163.0	41.7	58.3	25.0	16.7
31084	0							9	153.0	55.6	44.4	11.1	22.2
31301	2	311.0	0.0	100.0		50.0		47	165.5	34.0	66.0	12.8	19.1
31305	5	159.0	0.0	100.0		40.0	60.0	38	94.8	50.0	50.0	23.7	13.2
31309	129	21.9	89.1	10.9	9.3	9.3	0.8	24	62.9	79.2	20.8	12.5	8.3
31311	0							16	141.1	43.8	56.3	31.3	18.8
31312	17	133.9	29.4	70.6	23.5	64.7	5.9	22	169.1	27.3	72.7	45.5	13.6
31313	2		0.0	100.0				9	375.3	44.4	55.6	22.2	
31314	3	333.0	0.0	100.0		66.7	33.3	17	134.7	64.7	35.3	23.5	11.8
31316	53	79.5	28.3	71.7	15.1	56.6	9.4	20	82.8	55.0	45.0	10.0	25.0
31353	18	112.4	77.8	22.2	61.1	16.7	5.6	17	75.8	70.6	29.4	29.4	
31358	10	121.0	60.0	40.0	40.0	30.0	10.0	18	44.3	72.2	27.8	16.7	
31359	0							22	138.9	59.1	40.9	45.5	
31387	15	185.7	46.7	53.3	46.7	13.3	20.0	22	95.1	45.5	54.5	18.2	9.1
31419	0							17	107.0	23.5	76.5	5.9	5.9
31620	0							30	150.4	73.3	26.7	26.7	
31905	3	200.3	66.7	33.3	66.7			19	61.3	78.9	21.1	5.3	5.3
31984	0							16	140.4	56.3	43.8		31.3
41638	2	373.5	0.0	100.0			100.0	30	180.2	30.0	70.0	23.3	43.3
41680	18	144.2	27.8	72.2	16.7	5.6	44.4	47	67.7	68.1	31.9	8.5	19.1
32001	7	210.6	100.0	0.0	57.1			4	187.3	50.0	50.0	25.0	
32003	5	340.6	60.0	40.0	60.0	20.0	20.0	4	320.0	75.0	25.0		25.0
32010	21	175.0	57.1	42.9	47.6	9.5	19.0	21	170.8	28.6	71.4	33.3	9.5
33310	18	112.6	100.0	0.0	22.2			17	90.2	58.8	41.2	11.8	5.9
Skupaj	525	100.2	53.9	46.1	23.2	25.5	14.1	938	121.5	55.5	44.5	18.1	14.5

Poglavje 2

Kmetije skupaj po letih

2.1 Velikost gnezda

Tabela 2.1: Velikost gnezda po letih na kmetijah

Leto	MLADICE			STARE SVINJE						SKUPAJ		
	Št. pras.	DOP (dni)	$P_z/gn.$	Št. pras.	DMP (dni)	Lakt. (dni)	IO (dni)	PP (dni)	$P_z/gn.$	Št. pras.	$P_{ol}/gn.$	Izgube (%)
1984	87	188.8	9.21	535	162.0	30.7	12.9	17.5	10.08	622	8.55	14.1
1985	66	152.2	8.98	595	160.8	30.5	11.0	14.9	10.12	661	8.52	14.9
1986	176	175.1	9.00	653	162.4	29.5	14.9	18.3	9.83	829	8.42	12.8
1987	146	174.1	8.44	682	164.1	30.4	15.5	19.2	9.97	828	8.14	16.0
1988	184	152.8	8.77	555	162.6	32.1	11.4	16.0	10.30	739	8.34	15.9
1989	182	164.7	8.66	630	164.2	31.9	14.2	17.3	10.33	812	8.69	12.7
1990	167	166.7	9.05	792	169.2	34.7	15.4	18.9	10.15	959	8.69	12.8
1991	170	167.2	8.89	739	169.2	35.5	15.1	18.8	10.23	909	8.67	13.1
1992	157	175.2	8.83	768	170.4	36.0	14.8	18.7	10.11	925	8.72	11.8
1993	254	178.5	8.88	685	173.6	36.7	16.4	21.8	10.26	939	8.87	10.3
1994	349	168.9	9.01	1023	171.7	35.5	15.0	21.0	10.39	1372	8.91	11.2
1995	608	167.5	8.84	2038	169.4	35.5	14.2	18.6	10.56	2646	8.99	11.6
1996	588	163.7	9.01	1801	169.2	35.1	12.7	18.9	10.51	2389	9.03	10.9
1997	545	164.3	9.01	2220	170.6	34.7	14.1	20.7	10.41	2765	9.11	10.1
1998	932	156.0	9.20	2650	168.6	34.6	12.0	18.9	10.49	3582	9.06	10.7
1999	779	169.9	9.11	2913	169.3	33.8	12.5	20.3	10.41	3692	9.11	10.1
2000	747	161.7	9.12	2994	168.4	32.7	12.3	20.3	10.46	3741	9.24	9.4
2001	891	165.1	8.88	2895	166.9	31.7	12.0	19.9	10.28	3786	8.92	10.4
2002	920	165.5	9.08	3191	166.3	31.4	11.8	19.6	10.40	4111	9.05	10.5
2003	1010	170.5	9.21	3570	168.2	31.5	12.6	21.4	10.33	4580	8.98	10.9
2004	1065	173.0	9.05	3946	171.8	32.7	13.3	24.0	10.22	5011	8.76	12.2
2005	1060	184.8	9.16	4090	171.8	33.1	13.2	23.4	10.45	5150	8.95	12.1
2006	1054	175.9	9.23	4126	169.9	32.9	12.7	21.8	10.42	5180	8.95	12.1
2007	1054	172.5	9.31	4189	169.5	32.6	12.4	21.4	10.50	5243	9.01	12.2
2008	943	174.5	9.62	4126	170.3	32.7	12.1	22.1	10.56	5069	9.10	12.4
2009	956	170.8	9.29	4187	169.4	32.8	11.7	20.9	10.51	5143	9.01	12.4
2010	960	174.4	9.48	3674	169.1	32.1	11.4	21.4	10.61	4634	9.10	12.4
2011	1074	174.0	9.83	3786	170.1	32.3	11.8	21.8	10.75	4860	9.28	12.0
2012	1002	169.1	10.20	4040	165.8	31.0	10.6	19.3	11.26	5042	9.66	12.6
2013	1117	165.4	10.37	4127	164.8	31.1	9.5	18.1	11.19	5244	9.61	12.7
2014	1056	164.1	10.59	4210	165.3	31.4	9.7	18.3	11.25	5266	9.78	12.1
2015	789	168.6	10.23	4000	166.8	31.7	9.8	18.9	11.17	4789	9.58	13.0
2016	951	169.2	10.76	3853	164.6	31.1	9.7	18.0	11.55	4804	9.79	14.1
2017	889	170.2	10.88	3684	165.8	31.3	9.6	18.9	11.41	4573	9.71	14.2
2018	874	166.2	10.79	3881	166.8	31.3	9.3	19.8	11.50	4755	9.76	14.2
2019	850	161.4	10.59	3507	165.5	31.3	9.6	18.5	11.35	4357	9.67	13.6
2020	987	152.6	10.99	3778	163.7	31.4	8.9	16.4	11.77	4765	10.09	13.1
2021	1007	164.9	11.17	3851	163.5	31.1	8.9	16.6	11.89	4858	10.15	13.6
2022	789	166.3	10.64	3808	165.6	30.7	9.4	19.3	11.80	4597	10.09	13.0

2.2 Analiza pripustov

Tabela 2.2: Analiza pripustov mladic po letih kmetijah

Leto	S K U P A J							PRVI PRIPUST				DRUGI IN VIŠJI			
	Št. prip.	Usp. prip. (%)	Izl. po prip. (%)	Preg. (%)	DPI (dni)	DPP (dni)	P ₂ /prip.	Št. prip.	Prvi (%)	Usp. (%)	P ₂ /prip.	Št. prip.	≥2 (%)	Usp. (%)	P ₂ /prip.
1984	100	87.0		12.0		60.3	8.0	90	90.0	90.0	8.3	10	10.0	60.0	5.3
1985	74	86.5	2.7	9.5	77.0	79.1	7.7	67	90.5	86.6	7.7	7	9.5	85.7	8.0
1986	204	87.3	3.4	9.3	92.1	39.0	7.9	176	86.3	86.4	7.8	28	13.7	92.9	8.6
1987	167	88.6	5.4	5.4	72.6	52.4	7.4	158	94.6	88.6	7.4	9	5.4	88.9	7.2
1988	217	84.3	4.2	10.6	68.4	41.1	7.4	192	88.5	87.5	7.7	25	11.5	60.0	5.1
1989	219	84.9	3.2	11.9	96.7	55.9	7.3	186	84.9	86.6	7.5	33	15.1	75.8	6.7
1990	192	85.9	2.1	11.5	83.0	34.9	7.8	171	89.1	88.9	8.0	21	10.9	61.9	6.1
1991	194	89.2	2.1	8.8	62.0	38.7	7.9	176	90.7	90.3	7.9	18	9.3	77.8	7.8
1992	170	91.2	0.6	8.2	100.0	27.9	8.1	151	88.8	92.1	8.1	19	11.2	84.2	8.0
1993	281	91.1	2.1	6.4	203.8	61.8	8.1	264	93.9	93.2	8.3	17	6.1	58.8	5.8
1994	741	90.3	1.5	6.9	123.3	44.9	8.1	691	93.3	91.2	8.2	50	6.7	109.8	7.1
1995	2067	88.7	2.9	8.1	79.1	38.0	7.7	1916	92.7	89.4	7.6	151	7.3	80.8	7.8
1996	3384	79.5	6.3	14.0	57.2	34.4	6.8	2916	86.2	80.6	6.8	468	13.8	72.4	6.7
1997	3810	80.6	6.6	12.7	56.6	30.9	7.3	3322	87.2	82.0	7.4	488	12.8	71.5	6.7
1998	4605	80.4	7.3	12.1	73.7	35.9	7.4	4072	88.4	81.4	7.4	533	11.6	73.0	7.2
1999	3143	77.5	10.6	11.5	78.7	38.1	7.1	2757	87.7	79.3	7.3	386	12.3	65.5	5.9
2000	3003	72.1	10.8	16.9	68.3	37.6	6.5	2479	82.6	75.2	6.7	524	17.4	57.3	5.6
2001	3094	72.9	10.5	16.4	72.9	39.1	6.5	2584	83.5	74.2	6.4	510	16.5	66.1	6.4
2002	2904	67.2	10.7	16.8	72.4	42.4	6.1	2419	83.3	68.4	6.1	485	16.7	61.4	6.0
2003	3208	68.8	10.9	18.7	88.5	40.9	6.4	2601	81.1	71.3	6.5	607	18.9	58.2	5.7
2004	3009	70.0	9.1	19.9	77.6	42.6	6.3	2410	80.1	72.4	6.4	599	19.9	60.4	5.7
2005	3033	71.6	9.2	18.7	91.4	39.9	6.6	2446	80.6	73.8	6.8	587	19.4	62.5	5.8
2006	3163	76.6	8.4	14.4	83.0	42.5	7.1	2709	85.6	78.9	7.3	454	14.4	63.2	6.0
2007	2804	75.8	8.3	15.3	79.7	47.3	7.1	2361	84.2	77.7	7.1	443	15.8	65.7	6.4
2008	2613	76.6	7.9	15.2	75.3	44.0	7.4	2189	83.8	78.7	7.6	424	16.2	66.3	6.5
2009	2615	75.3	8.4	15.7	83.5	46.3	7.0	2185	83.6	78.8	7.3	430	16.4	57.4	5.3
2010	2629	70.7	9.9	18.3	79.3	46.6	6.7	2181	83.0	74.2	6.9	448	17.0	53.3	5.4
2011	2278	72.4	9.7	16.9	81.2	46.0	7.2	1860	81.7	74.9	7.3	418	18.3	61.5	6.4
2012	2333	70.3	10.7	18.3	77.2	40.5	7.2	1901	81.5	72.8	7.4	432	18.5	59.3	6.3
2013	2605	72.7	10.8	16.1	72.6	43.5	7.6	2183	83.8	75.0	7.8	422	16.2	60.4	6.6
2014	2447	75.4	8.9	15.2	78.2	38.5	8.0	2045	83.6	77.6	8.2	402	16.4	63.9	6.9
2015	2190	70.7	10.1	18.9	88.3	42.8	7.2	1817	83.0	72.2	7.3	373	17.0	63.3	6.7
2016	2188	71.8	9.6	18.4	91.2	44.6	7.8	1755	80.2	74.5	8.0	433	19.8	60.7	6.8
2017	2161	70.9	10.3	18.2	80.4	44.5	7.8	1771	82.0	72.6	7.9	390	18.1	63.6	7.1
2018	2182	71.2	8.9	19.3	89.9	43.5	7.8	1767	81.0	73.7	7.9	415	19.0	60.5	7.1
2019	2101	72.2	9.1	18.4	85.5	45.2	7.6	1710	81.4	73.9	7.7	391	18.6	64.7	7.0
2020	2176	73.0	9.1	17.5	87.5	43.1	8.0	1784	82.0	75.9	8.3	392	18.0	60.0	6.8
2021	2519	72.2	9.7	17.7	84.2	43.7	8.1	2060	81.8	74.3	8.3	459	18.2	62.8	7.1
2022	2176	67.4	11.3	20.6	76.7	44.0	7.2	1727	79.4	70.2	7.4	449	20.6	56.6	6.1

Tabela 2.3: Analiza pripustov starih svinj po letih na kmetijah

Leto	S K U P A J							PRVI PRIPUST				DRUGI IN VIŠJI			
	Št. prip.	Usp. prip. (%)	Izl. po prip. (%)	Preg. (%)	DPI (dni)	DPP (dni)	P _z /prip.	Št. prip.	Prvi (%)	Usp. (%)	P _z /prip.	Št. prip.	≥2 (%)	Usp. (%)	P _z /prip.
1984	632	85.1	3.3	11.1	77.2	38.1	8.6	556	88.0	87.2	8.9	76	12.0	75.0	7.3
1985	679	87.3	3.1	8.5	55.0	36.5	8.8	602	88.7	89.9	9.1	77	11.3	68.8	7.0
1986	723	90.0	2.2	7.5	60.8	35.3	8.8	639	88.4	90.0	8.8	84	11.6	90.5	9.1
1987	806	86.2	4.2	8.9	78.7	33.5	8.6	718	89.1	88.0	8.8	88	10.9	71.6	7.3
1988	678	80.5	5.7	12.8	54.8	32.4	8.3	585	86.3	83.3	8.6	93	13.7	63.4	6.5
1989	755	83.4	5.7	10.2	66.2	32.0	8.7	672	89.0	86.5	9.0	83	11.0	59.0	6.0
1990	914	85.9	3.5	9.9	66.4	33.5	8.7	819	89.6	89.0	9.0	95	10.4	59.0	5.9
1991	861	86.1	4.5	8.8	73.5	38.4	8.8	773	89.8	88.4	9.1	88	10.2	65.9	6.6
1992	941	83.0	4.9	11.3	73.5	39.4	8.4	832	88.4	85.7	8.7	109	11.6	62.4	6.0
1993	861	79.4	6.3	14.2	81.4	42.3	8.2	737	85.6	81.9	8.4	124	14.4	64.5	6.4
1994	1379	80.9	4.6	13.9	80.7	43.3	8.5	1169	84.8	84.3	8.9	210	15.2	61.9	6.4
1995	1812	81.6	6.0	12.0	84.4	46.2	8.6	1602	88.4	83.3	8.7	210	11.6	68.8	7.2
1996	2310	77.8	7.1	14.4	89.4	43.1	8.2	1976	85.5	80.3	8.4	334	14.5	62.9	6.7
1997	2892	77.5	6.5	15.6	91.0	43.8	8.1	2457	85.0	79.5	8.3	435	15.0	66.0	7.0
1998	3538	74.8	7.3	17.2	93.1	44.8	7.9	2949	83.4	78.3	8.2	589	16.6	57.9	6.1
1999	4095	71.1	10.1	17.7	98.9	44.9	7.4	3339	81.5	74.8	7.8	756	18.5	55.2	5.7
2000	4131	72.4	7.5	19.2	87.8	42.8	7.6	3301	79.9	75.5	7.9	830	20.1	60.1	6.3
2001	4089	70.3	9.5	19.7	84.4	44.0	7.2	3308	80.9	73.2	7.6	781	19.1	58.0	5.8
2002	4357	73.3	8.4	17.8	89.3	43.0	7.6	3553	81.5	76.3	8.0	804	18.5	60.1	6.2
2003	5178	69.0	9.1	21.0	109.1	47.6	7.1	4138	79.9	72.8	7.5	1040	20.1	53.5	5.5
2004	5820	67.3	9.3	22.3	104.5	48.9	6.9	4509	77.5	71.5	7.3	1311	22.5	52.7	5.4
2005	5729	71.3	8.1	19.9	94.8	49.6	7.5	4547	79.4	75.3	7.9	1182	20.6	56.3	5.9
2006	5641	73.0	8.4	17.7	106.5	48.7	7.6	4579	81.2	75.9	7.9	1062	18.8	60.5	6.3
2007	5765	72.4	8.0	18.6	109.4	52.4	7.6	4705	81.6	76.2	8.0	1060	18.4	55.7	5.8
2008	5851	70.3	9.1	19.6	100.7	57.8	7.4	4704	80.4	74.5	7.9	1147	19.6	53.0	5.6
2009	5723	73.3	7.6	18.1	107.0	58.8	7.7	4670	81.6	77.6	8.2	1053	18.4	54.3	5.6
2010	5173	71.1	8.6	19.0	99.7	54.1	7.5	4162	80.5	75.3	8.0	1011	19.5	54.1	5.8
2011	5396	69.9	10.1	19.1	98.6	52.5	7.5	4305	79.8	73.8	7.9	1091	20.2	55.0	5.9
2012	5372	75.0	7.2	17.2	92.0	52.2	8.4	4444	82.7	78.3	8.8	928	17.3	59.3	6.7
2013	5617	73.4	8.8	17.2	98.2	51.7	8.2	4652	82.8	76.2	8.5	965	17.2	59.6	6.7
2014	5724	73.5	8.6	17.0	97.2	48.7	8.3	4759	83.1	75.7	8.5	965	16.9	62.9	7.0
2015	5523	72.1	8.8	18.5	112.7	53.9	8.1	4480	81.1	75.4	8.4	1043	18.9	58.1	6.5
2016	5330	72.5	7.8	19.2	101.5	48.0	8.4	4304	80.8	76.7	8.9	1026	19.3	54.7	6.2
2017	5234	70.8	7.7	20.5	110.0	51.1	8.1	4192	80.1	74.8	8.6	1042	19.9	54.8	6.2
2018	5383	72.0	8.2	18.8	100.5	54.1	8.3	4322	80.3	75.9	8.8	1061	19.7	56.2	6.3
2019	4780	72.5	8.1	18.7	103.3	48.4	8.2	3863	80.8	76.1	8.7	917	19.2	57.1	6.5
2020	4999	75.7	7.5	16.2	96.4	51.5	8.9	4183	83.7	78.7	9.3	816	16.3	60.2	6.9
2021	5239	74.2	7.8	17.2	98.7	53.8	8.8	4343	82.9	78.1	9.3	896	17.1	55.5	6.5
2022	5322	71.5	8.0	19.3	100.1	52.6	8.4	4277	80.4	76.6	9.1	1045	19.6	50.7	5.9

Tabela 2.4: Distribucija pregonitev po letih na kmetijah

Leto	MLADICE					STARE SVINJE				
	Št. preg.	DPP (dni)	do 25. dne (%)	25-40 dni (%)	po 40. dnevu (%)	Št. preg.	DPP (dni)	do 25. dne (%)	25-40 dni (%)	po 40. dnevu (%)
1984	12	60.3	41.7	8.3	50.0	40	38.1	50.7	18.3	31.0
1985	7	79.1	28.6	0.0	71.4	58	36.5	58.6	12.1	29.3
1986	7	39.0	52.6	5.3	42.1	52	35.3	61.1	11.1	27.8
1987	9	52.4	22.2	22.2	55.6	72	33.5	58.3	15.3	26.4
1988	23	41.1	39.1	21.7	39.1	87	32.4	56.3	26.4	17.2
1989	26	55.9	30.8	7.7	61.5	77	32.0	59.7	16.9	23.4
1990	22	34.9	45.5	27.3	27.3	90	33.5	56.0	17.6	26.4
1991	17	38.7	29.4	23.5	47.1	76	38.4	56.6	14.5	29.0
1992	14	27.9	71.4	7.1	21.4	106	39.4	50.9	11.3	37.7
1993	18	61.8	16.7	22.2	61.1	122	42.3	48.4	15.6	36.1
1994	51	44.9	49.0	15.7	35.3	192	43.3	42.2	17.7	40.1
1995	167	38.0	44.3	24.0	31.8	217	46.2	37.3	19.8	42.9
1996	473	34.4	51.6	23.3	25.2	333	43.1	46.8	13.8	39.3
1997	482	30.9	55.2	22.8	22.0	451	43.8	48.3	12.2	39.5
1998	556	35.9	52.7	21.9	25.3	607	44.8	48.8	12.5	38.7
1999	362	38.1	51.7	18.2	30.1	725	44.9	44.8	14.6	40.5
2000	508	37.6	50.2	21.3	28.5	793	42.8	44.4	15.4	40.3
2001	506	39.1	50.4	20.6	29.0	804	44.0	47.1	16.0	36.8
2002	498	42.4	48.5	18.0	33.5	774	43.0	45.7	17.6	36.7
2003	601	40.9	46.3	21.6	32.1	1089	47.6	41.3	16.3	42.3
2004	599	42.6	47.7	16.0	36.2	1300	48.9	40.8	13.2	46.0
2005	566	39.9	47.9	19.6	32.5	1138	49.6	39.2	14.7	46.1
2006	457	42.5	48.1	16.8	35.0	1001	48.7	39.8	15.9	44.4
2007	429	47.3	41.7	18.6	39.6	1075	52.4	35.2	15.8	49.1
2008	397	44.0	46.9	18.9	34.2	1147	57.8	33.1	14.2	52.7
2009	411	46.3	49.1	15.6	35.3	1036	58.8	31.9	14.4	53.7
2010	480	46.6	45.1	13.3	41.6	985	54.1	35.6	16.2	48.2
2011	384	46.0	37.7	20.1	42.2	1033	52.5	34.1	18.2	47.7
2012	427	40.5	51.3	14.5	34.2	923	52.2	37.4	14.2	48.4
2013	418	43.5	47.1	18.2	34.7	964	51.7	35.4	15.2	49.5
2014	373	38.5	47.2	22.3	30.6	970	48.7	38.1	15.3	46.6
2015	413	42.8	40.0	22.3	37.8	1021	53.9	34.6	15.3	50.2
2016	402	44.6	44.3	15.9	39.8	1023	48.0	38.2	16.8	45.0
2017	394	44.5	40.9	18.8	40.4	1073	51.1	37.7	14.9	47.3
2018	420	43.5	45.0	17.9	37.1	1010	54.1	35.8	15.3	48.9
2019	387	45.2	40.6	20.7	38.8	896	48.4	37.4	15.2	47.4
2020	381	43.1	41.7	18.9	39.4	808	51.5	35.8	16.0	48.3
2021	445	43.7	41.4	20.2	38.4	900	53.8	31.0	15.3	53.7
2022	449	44.0	37.9	17.8	44.3	1026	52.6	30.7	16.0	53.3

2.3 Analiza reprodukcijskega ciklusa

Tabela 2.5: Starost mladic ob pravitvi in število krmnih dni na živorojenega pujska pri mladicah na kmetijah

Leto	Št. pras.	Starost ob 1.prip. pras.	Starost ob pras.	do 360 dni (%)	361-420 dni (%)	≥421 dni (%)	Izl. (%)	pred prip. (%)	po prip. (%)	Starost ob izl.	kDOP (dni)	KD/ P_2
1984	87	272.6	388.8	64.4	26.4	9.2					188.8	20.5
1985	65	237.2	352.2	93.8	6.2		3.0			318.0	155.8	17.6
1986	175	255.9	374.0	74.3	17.7	8.0	3.8			339.6	179.6	19.7
1987	149	255.9	373.4	67.1	22.8	10.1	6.9			331.1	183.1	22.0
1988	184	234.8	353.1	70.1	22.3	7.6	3.7			327.6	157.9	18.2
1989	185	240.7	362.9	65.4	26.5	8.1	3.6			371.3	169.4	19.6
1990	165	249.8	366.9	67.3	22.4	10.3	2.9			322.7	170.6	19.0
1991	173	246.8	365.2	54.9	34.1	11.0	1.7			337.7	167.6	18.9
1992	153	257.6	375.8	51.6	32.0	16.3					175.8	19.8
1993	257	260.0	376.9	47.9	36.2	9.3	2.6			577.7	187.2	21.1
1994	349	249.4	368.9	54.2	33.2	12.6	3.5	42.9	57.1	396.3	177.5	19.7
1995	608	245.5	367.5	54.1	33.9	12.0	6.7	49.7	50.3	340.2	163.5	18.5
1996	632	240.3	364.1	58.5	30.1	11.4	14.1	57.8	42.2	294.7	168.4	18.7
1997	545	241.8	364.3	63.3	30.8	5.9	16.1	56.2	43.8	306.3	173.0	19.2
1998	893	234.8	357.7	61.0	30.9	8.1	10.9	47.0	53.0	311.3	164.2	17.9
1999	794	242.6	365.9	53.9	34.9	11.2	19.6	57.7	42.3	311.6	184.4	20.2
2000	698	236.6	362.2	57.7	32.4	9.9	16.7	42.7	57.3	316.2	173.7	18.9
2001	899	237.6	363.0	59.6	29.4	11.0	21.2	48.2	51.8	300.7	183.2	20.8
2002	862	237.2	364.2	56.6	33.2	10.2	19.0	47.8	52.2	309.6	179.5	19.6
2003	940	241.0	366.5	22.1	42.6	35.3	19.4	47.4	52.6	323.6	185.8	20.3
2004	1023	242.6	369.8	52.5	34.2	13.3	21.1	59.2	40.8	303.6	187.5	20.6
2005	928	251.7	378.1	43.8	39.3	16.9	18.0	46.4	53.6	327.3	191.2	21.0
2006	977	248.8	374.3	44.2	40.9	14.8	17.2	56.6	43.4	322.1	185.6	19.9
2007	969	243.5	369.2	54.7	32.5	12.8	20.8	65.4	34.6	302.0	183.2	19.7
2008	874	245.8	370.4	53.5	32.8	13.6	25.0	74.4	25.6	292.4	186.6	19.5
2009	866	240.8	365.7	58.5	29.0	12.5	21.0	64.1	35.9	305.8	181.1	19.4
2010	922	249.6	376.4	49.0	35.8	15.2	23.3	59.5	40.5	303.6	191.7	20.2
2011	1042	245.2	370.8	51.0	35.8	13.2	22.1	65.3	34.7	297.9	187.4	19.0
2012	964	243.3	369.0	55.3	32.5	12.2	23.0	55.1	44.9	308.1	190.2	18.6
2013	1035	238.5	362.7	57.7	32.7	9.6	21.5	52.5	47.5	291.9	176.0	16.9
2014	981	239.1	362.6	59.6	31.4	9.0	21.4	63.0	37.0	289.2	176.0	16.6
2015	845	242.8	367.8	54.5	34.1	11.4	21.2	54.4	45.6	314.4	186.2	18.2
2016	907	243.0	369.2	55.1	32.4	12.5	17.7	49.5	50.5	312.0	184.4	17.0
2017	824	240.0	365.0	53.5	35.6	10.9	20.1	52.4	47.6	299.0	179.2	16.7
2018	818	238.2	364.3	55.3	34.6	10.1	18.0	54.3	45.7	298.1	174.4	15.9
2019	804	235.0	362.7	59.8	27.1	13.1	17.5	50.3	49.7	312.5	174.8	16.4
2020	929	227.1	351.4	66.6	26.4	7.0	18.2	57.0	43.0	309.6	166.7	15.1
2021	992	237.7	364.7	59.5	28.4	12.1	21.4	55.9	44.1	295.3	175.5	15.7
2022	769	232.3	361.0	64.0	24.7	11.3	24.8	54.9	45.1	292.8	178.8	16.7

Tabela 2.6: Doba med prasiatvama in število krmnih dni na pujska po letih na kmetijah

Leto	Št. pras.	DMP (dni)	do 160 dni (%)	161-200 dni (%)	≥201 dni (%)	Izl. (%)	DI (dni)	kDMP (dni)	G_L	P_{Σ} / leto	KD/ P_{Σ}
1984	510	162.2	70.0	21.4	8.6	7.9	105.3	171.3	2.10	21.4	17.0
1985	607	158.8	76.3	18.5	5.3	10.3	72.9	167.2	2.20	21.9	16.6
1986	618	160.2	74.8	18.8	6.5	9.9	62.9	167.2	2.20	21.5	17.0
1987	701	160.9	71.9	21.8	6.3	14.1	82.0	174.4	2.10	20.7	17.6
1988	505	161.6	61.2	34.1	4.7	18.9	73.5	178.7	2.00	20.5	17.8
1989	637	162.9	59.7	34.1	6.3	15.3	94.3	179.9	2.00	20.9	17.5
1990	748	166.2	52.3	39.0	8.7	11.8	71.5	175.7	2.10	20.7	17.6
1991	726	166.6	52.3	39.1	8.5	13.6	84.4	179.8	2.00	20.7	17.7
1992	769	169.1	46.6	46.0	7.5	13.1	87.5	182.3	2.00	20.3	18.0
1993	684	174.4	35.1	49.7	15.2	18.6	112.9	200.1	1.80	18.7	19.5
1994	1023	171.7	46.8	41.4	11.7	16.4	104.8	192.5	1.90	19.7	18.5
1995	2038	169.4	50.4	39.8	9.8	16.1	99.0	189.4	1.90	20.4	17.9
1996	1789	170.4	50.8	38.2	11.1	18.0	103.0	194.4	1.90	19.9	18.4
1997	2220	170.6	57.8	30.5	11.7	16.1	105.6	191.7	1.90	19.8	18.4
1998	2594	168.3	54.4	36.5	9.1	18.0	109.2	193.4	1.90	19.9	18.4
1999	2890	168.4	55.7	34.4	10.0	20.6	115.4	199.8	1.80	19.0	19.2
2000	2959	168.2	58.2	31.2	10.5	16.6	106.8	190.5	1.90	20.0	18.2
2001	2796	167.1	61.5	29.0	9.4	20.8	102.5	194.9	1.90	19.3	19.0
2002	3163	166.0	63.7	27.5	8.8	18.4	103.1	190.2	1.90	20.0	18.3
2003	3605	167.6	25.4	56.2	18.4	20.3	123.4	200.4	1.82	18.8	19.4
2004	3833	170.6	59.3	28.2	12.5	19.2	128.8	202.8	1.80	18.4	19.8
2005	3998	169.9	58.4	30.1	11.5	17.4	117.5	196.0	1.86	19.4	18.8
2006	4043	168.8	59.6	29.3	11.2	17.7	121.7	196.2	1.86	19.4	18.8
2007	4184	168.9	60.8	28.1	11.1	18.9	118.1	197.8	1.85	19.4	18.8
2008	4058	169.1	61.4	27.7	10.8	19.5	119.1	199.7	1.83	19.2	19.0
2009	4133	167.5	63.9	25.8	10.3	17.1	120.4	194.0	1.88	19.9	18.4
2010	3740	168.3	66.6	22.9	10.5	19.8	113.5	197.7	1.85	19.5	18.7
2011	3722	169.3	62.0	26.7	11.4	21.2	120.0	202.7	1.80	19.3	18.9
2012	3997	165.0	68.7	22.6	8.7	18.1	104.2	188.9	1.93	21.7	16.8
2013	4133	164.3	70.7	20.0	9.4	19.9	106.4	191.8	1.90	21.4	17.1
2014	4134	164.2	68.1	23.5	8.4	19.6	103.7	190.8	1.91	21.4	17.0
2015	4047	167.1	64.8	25.6	9.6	19.0	126.9	197.6	1.85	20.7	17.7
2016	3789	164.3	68.4	23.1	8.5	17.4	118.3	190.2	1.92	22.2	16.5
2017	3724	166.0	67.7	21.6	10.7	18.3	123.9	195.2	1.87	21.3	17.1
2018	3834	165.4	69.7	20.2	10.0	19.0	118.6	194.6	1.88	21.7	16.9
2019	3527	165.2	67.6	22.4	10.0	19.0	111.0	192.2	1.90	21.5	17.0
2020	3706	163.3	71.2	21.3	7.5	17.3	112.1	187.6	1.95	22.9	16.0
2021	3848	163.7	71.4	20.5	8.1	18.5	111.7	190.0	1.92	22.8	16.0
2022	3810	164.0	72.1	19.2	8.7	19.8	120.9	195.1	1.87	22.1	16.5

Tabela 2.7: Velikost gnezda ob rojstvu, gospodarnost priraje pujskov in delež letne obnove črede svinj na kmetijah

Leto	Št. pras.	Št. izl.	$P_Z/gn.$	KD/gn.	G_L	KD/ P_Z	Št. svinj v čredi	Remont (%)	G_S
1984									
1985									
1986									
1987									
1988									
1989									
1990									
1991									
1992									
1993									
1994	1372	221	10.04	187.2	1.95	18.6	816	27.1	7.20
1995	2646	595	10.17	174.5	2.09	17.2	2290	26.0	8.05
1996	2421	849	10.17	178.7	2.04	17.6	2209	38.4	5.32
1997	2765	1008	10.14	180.9	2.02	17.8	2597	38.8	5.20
1998	3487	1042	10.18	176.1	2.07	17.3	3077	33.9	6.12
1999	3684	1420	10.13	192.4	1.90	19.0	2938	48.3	3.93
2000	3658	1054	10.20	183.3	1.99	18.0	2632	40.0	4.97
2001	3695	1370	9.92	189.6	1.93	19.1	2657	51.6	3.73
2002	4025	1221	10.14	185.9	1.96	18.3	2683	45.5	4.32
2003	4545	1511	10.10	194.6	1.90	19.3	3187	47.4	4.01
2004	4856	1548	9.98	197.2	1.85	19.8	3284	47.1	3.93
2005	4926	1338	10.19	194.3	1.88	19.1	3277	40.8	4.60
2006	5020	1411	10.20	192.1	1.90	18.8	3438	41.0	4.63
2007	5153	1613	10.29	192.6	1.90	18.7	3428	47.0	4.03
2008	4932	1728	10.35	195.2	1.87	18.9	3317	52.1	3.59
2009	4999	1429	10.36	189.7	1.92	18.3	3221	44.4	4.34
2010	4662	1564	10.36	195.7	1.87	18.9	3085	50.7	3.68
2011	4764	1578	10.54	197.4	1.85	18.7	3073	51.4	3.60
2012	4961	1430	11.04	189.3	1.93	17.2	2999	47.7	4.04
2013	5168	1601	11.08	186.6	1.96	16.9	3153	50.8	3.85
2014	5115	1571	11.10	186.0	1.96	16.8	3125	50.3	3.90
2015	4892	1477	11.00	193.9	1.88	17.6	3162	46.7	4.03
2016	4696	1201	11.41	188.4	1.94	16.5	2879	41.7	4.64
2017	4548	1290	11.28	190.1	1.92	16.8	2846	45.3	4.24
2018	4652	1314	11.44	188.1	1.94	16.5	2899	45.3	4.28
2019	4331	1213	11.21	186.4	1.96	16.6	2692	45.1	4.35
2020	4635	1201	11.61	180.6	2.02	15.6	2757	43.6	4.64
2021	4840	1459	11.70	184.8	1.97	15.8	3015	48.4	4.08
2022	4579	1532	11.64	190.0	1.92	16.3	2883	53.1	3.62

Tabela 2.8: Dolžina laktacije in starostna struktura po letih na kmetijah

Leto	DOLŽINA LAKTACIJE (dni)							P R A S I T V E		
	Lakt. (dni)	do 14 dni (%)	15-19 dni (%)	20-24 dni (%)	25-29 dni (%)	30-34 dni (%)	≥35 dni (%)	prva (%)	2.-7. (%)	≥8 (%)
1984	30.6	4.3	0.4	2.7	92.6	0.0	0.0	25.4	74.6	0.0
1985	30.4	7.0	0.1	6.5	86.4	0.0	0.0	9.3	66.3	24.4
1986	29.3	4.0	0.7	9.3	86.0	0.0	0.0	21.0	56.7	22.3
1987	30.0	4.0	1.0	8.5	86.5	0.0	0.0	16.4	68.2	15.4
1988	31.4	6.0	1.9	5.8	86.3	0.0	0.0	23.5	67.8	8.7
1989	32.1	3.6	1.1	6.0	89.3	0.0	0.0	20.3	75.2	4.5
1990	34.0	3.9	1.1	8.4	86.6	0.0	0.0	16.7	74.5	8.8
1991	35.2	4.3	0.6	7.4	87.7	0.0	0.0	17.3	71.5	11.2
1992	35.4	4.3	0.6	3.8	91.3	0.0	0.0	14.7	68.3	17.0
1993	36.5	4.6	1.2	3.8	90.4	0.0	0.0	23.9	61.7	14.4
1994	35.5	2.2	0.5	4.4	11.0	26.1	55.8	25.4	64.4	10.2
1995	35.5	1.8	0.4	1.1	11.5	29.3	55.9	23.0	68.6	8.4
1996	35.2	1.9	0.4	2.0	13.4	26.2	56.1	26.1	66.0	7.9
1997	34.7	3.0	0.6	2.7	14.6	29.8	49.2	19.7	71.8	8.5
1998	34.6	2.8	0.6	2.6	14.2	33.7	46.1	57.1	37.2	5.7
1999	33.8	3.0	0.9	4.0	16.6	34.5	41.1	46.7	45.4	7.9
2000	32.6	2.9	1.1	5.0	19.6	38.1	33.2	43.3	46.1	10.6
2001	31.8	3.4	0.8	5.6	25.3	39.5	25.5	45.4	44.7	9.9
2002	31.5	3.4	1.3	5.3	26.4	40.5	23.1	39.9	49.5	10.6
2003	31.5	3.9	0.9	5.8	29.6	36.8	22.9	39.1	51.2	9.7
2004	32.6	3.6	0.6	3.0	22.8	42.0	28.1	37.4	51.9	10.6
2005	33.1	3.2	0.6	2.7	22.7	38.7	32.2	35.0	54.7	10.4
2006	33.0	3.0	0.6	3.1	25.2	37.2	30.9	37.8	51.4	10.8
2007	32.5	3.4	0.7	3.2	26.6	38.5	27.7	35.9	51.5	12.6
2008	32.8	3.9	0.4	2.1	21.8	41.7	30.1	35.7	51.5	12.8
2009	32.8	4.0	0.4	1.9	23.6	40.6	29.5	34.3	53.1	12.6
2010	32.1	4.1	0.4	2.1	22.6	44.8	26.1	36.0	51.5	12.6
2011	32.3	3.6	0.8	3.6	20.6	41.9	29.5	34.8	53.7	11.5
2012	31.1	3.7	2.3	6.7	22.0	40.3	25.0	32.2	57.5	10.3
2013	31.1	3.2	1.6	6.6	25.9	37.9	24.8	33.4	56.9	9.7
2014	31.4	4.0	2.7	6.9	23.3	36.9	26.3	32.8	56.2	11.0
2015	31.7	2.7	1.4	8.2	23.6	36.2	27.9	32.6	55.3	12.1
2016	31.2	2.7	0.6	8.6	27.0	36.2	24.8	32.1	55.0	12.9
2017	31.2	2.6	0.7	7.2	31.8	32.0	25.8	32.1	53.9	14.0
2018	31.3	3.2	0.6	6.1	30.2	35.7	24.2	31.4	54.5	14.1
2019	31.3	3.2	0.9	5.9	30.7	33.9	25.4	32.7	54.2	13.1
2020	31.4	2.7	0.6	5.1	30.9	35.6	25.1	33.5	55.1	11.4
2021	31.1	2.7	0.8	5.9	33.1	33.0	24.4	36.1	52.5	11.4
2022	30.7	3.2	0.7	5.4	35.6	32.2	22.9	32.3	56.0	11.7

2.4 Interim obdobje in poodstavitveni premor

Tabela 2.9: Interim obdobje po letih na kmetijah

Leto	PR V E S N I C E				S T A R E S V I N J E			
	IO (dni)	do 12 dni (%)	12-40 dni (%)	≥41 dni (%)	IO (dni)	do 12 dni (%)	12-40 dni (%)	≥41 dni (%)
1984	25.2	50.5	29.4	20.1	10.7	81.8	14.4	3.8
1985	30.1	46.3	26.0	27.7	9.3	87.6	10.1	2.3
1986	21.9	47.0	32.7	20.3	13.1	79.8	12.9	7.3
1987	23.1	57.1	25.2	17.7	13.8	77.7	15.4	6.9
1988	17.6	70.7	19.2	10.1	10.0	83.4	13.5	3.1
1989	21.8	53.5	30.8	15.7	10.9	81.6	14.2	4.2
1990	26.9	55.3	27.7	17.0	13.3	74.8	19.2	6.0
1991	29.8	45.5	32.9	21.6	12.5	79.5	14.1	6.4
1992	28.2	33.5	30.0	36.5	12.2	77.8	17.3	4.9
1993	24.9	47.7	30.7	21.6	14.0	72.2	21.5	6.4
1994	30.2	37.6	33.3	29.1	13.0	68.6	17.5	13.9
1995	21.9	54.3	29.8	15.9	12.0	73.7	20.4	5.9
1996	20.9	51.3	32.8	15.9	10.7	79.7	15.3	5.0
1997	24.7	50.6	31.1	18.3	11.5	77.5	17.5	4.9
1998	17.9	59.1	29.1	11.7	10.8	79.8	15.0	4.1
1999	18.7	57.3	30.3	12.6	11.3	79.3	16.1	5.0
2000	20.6	58.4	26.9	14.7	10.9	80.9	14.8	4.3
2001	18.0	59.6	25.4	14.9	11.1	78.4	14.7	6.8
2002	19.3	58.5	28.4	13.1	10.2	82.2	14.3	3.5
2003	18.2	62.1	24.8	13.1	11.5	79.5	15.7	4.8
2004	22.1	58.7	22.0	19.3	12.1	80.1	12.9	7.0
2005	21.2	57.5	27.0	15.5	11.6	80.0	15.0	5.0
2006	20.5	59.4	24.5	16.1	11.6	79.6	14.9	5.5
2007	18.5	61.4	24.9	13.7	11.2	82.2	13.0	4.8
2008	18.4	67.3	19.4	13.3	11.8	81.3	12.7	6.0
2009	16.9	70.2	17.4	12.4	12.0	82.9	11.1	6.0
2010	17.9	69.1	19.4	11.5	9.9	85.8	10.8	3.4
2011	17.0	66.3	23.7	10.0	11.1	83.6	11.2	5.2
2012	15.0	75.4	15.8	8.8	10.1	85.2	11.1	3.8
2013	12.3	80.1	13.4	6.5	9.0	88.1	8.8	3.1
2014	13.7	77.1	14.9	8.0	9.0	88.5	8.3	3.2
2015	14.7	75.1	15.3	9.6	9.2	87.9	8.7	3.4
2016	14.4	78.3	13.1	8.6	9.8	85.8	10.5	3.7
2017	15.2	75.5	13.9	10.6	9.1	88.4	8.6	3.0
2018	15.4	74.4	15.5	10.1	8.6	88.8	8.3	2.9
2019	13.3	77.8	14.4	7.8	9.7	86.7	9.4	3.9
2020	12.4	81.6	11.9	6.4	8.8	88.5	8.3	3.2
2021	13.8	80.0	12.7	7.3	8.4	90.2	6.6	3.2
2022	14.3	78.8	13.6	7.7	8.8	90.1	6.9	3.0

Tabela 2.10: Poodstavitveni premor po letih na kmetijah

Leto	PRVESNICE					STARE SVINJE				
	Št. svinj	PP (dni)	do 12 dni (%)	13-60 dni (%)	≥61 dni (%)	Št. svinj	PP (dni)	do 12 dni (%)	13-60 dni (%)	≥61 dni (%)
1984	109	31.3	44.0	40.5	15.5	527	15.4	73.8	20.8	5.4
1985	69	37.2	42.0	40.3	17.7	610	13.8	79.7	16.0	4.3
1986	147	25.1	47.1	36.1	16.8	576	16.8	75.4	14.4	10.2
1987	142	28.7	51.5	34.5	14.0	664	18.0	70.4	23.6	6.0
1988	167	24.0	56.3	34.8	8.9	511	15.5	73.6	22.2	4.2
1989	215	28.5	46.5	30.7	22.8	540	14.3	73.7	23.5	2.8
1990	177	33.6	49.7	35.6	14.7	738	17.7	68.0	26.3	5.7
1991	143	32.1	41.3	42.0	16.7	717	17.3	72.1	21.9	6.0
1992	167	35.7	37.7	42.5	19.8	774	17.2	69.8	23.8	6.5
1993	218	30.6	42.2	44.0	13.8	643	20.5	63.1	30.0	6.8
1994	357	30.2	33.0	39.0	28.0	1022	20.5	61.1	24.8	14.1
1995	427	28.5	46.7	39.9	13.4	1385	17.8	67.2	25.8	6.9
1996	587	31.1	43.3	40.4	16.3	1723	17.9	69.1	23.6	7.3
1997	743	33.8	41.6	39.7	18.5	2149	18.4	67.9	24.5	7.4
1998	745	28.8	47.7	39.6	12.6	2793	20.0	67.7	23.2	8.1
1999	1035	29.9	45.0	40.1	15.1	3060	21.5	66.1	24.8	9.3
2000	783	33.5	43.9	38.3	17.8	3348	20.6	66.5	24.6	8.9
2001	1058	31.6	45.1	36.0	18.9	3031	20.0	65.9	24.0	10.1
2002	1028	31.4	45.3	40.6	14.1	3329	19.7	69.2	22.9	7.9
2003	1219	32.5	47.5	35.4	17.1	3959	23.0	65.4	24.1	10.5
2004	1404	40.3	43.2	33.0	23.8	4416	25.8	63.9	22.5	13.6
2005	1344	40.6	43.1	35.5	21.4	4385	24.1	65.6	23.5	10.9
2006	1176	36.4	45.3	34.6	20.1	4465	22.3	66.6	23.1	10.3
2007	1246	34.3	49.1	33.9	17.0	4519	23.8	68.3	20.7	11.0
2008	1300	38.4	50.6	27.4	22.0	4551	25.2	67.2	21.2	11.6
2009	1139	35.7	54.4	27.2	18.4	4584	26.3	69.5	18.1	12.4
2010	1120	38.8	52.3	29.5	18.2	4053	24.1	70.0	19.5	10.5
2011	1301	36.4	46.8	33.9	19.3	4095	22.9	69.4	19.8	10.8
2012	1244	31.5	58.7	24.5	16.8	4128	20.8	72.6	18.6	8.8
2013	1236	26.3	61.9	25.6	12.5	4381	19.4	74.7	16.3	9.0
2014	1328	27.6	60.9	25.0	14.1	4396	18.4	75.0	16.7	8.3
2015	1057	31.7	55.8	27.9	16.3	4466	20.7	73.0	17.3	9.7
2016	1097	27.6	63.5	23.4	13.1	4233	22.7	70.7	18.8	10.5
2017	1092	33.8	55.2	25.5	19.3	4142	20.9	73.1	16.9	10.0
2018	1100	35.6	55.5	24.4	20.1	4283	21.9	73.2	16.1	10.7
2019	1052	27.5	61.1	24.5	14.4	3728	22.0	71.4	18.1	10.5
2020	1165	26.9	65.4	20.1	14.5	3834	18.2	76.0	15.9	8.1
2021	1039	28.5	63.2	22.1	14.7	4200	19.8	76.7	14.6	8.7
2022	1202	36.2	59.1	20.4	20.5	4120	21.3	74.7	14.8	10.5

2.5 Analiza izločitev

Tabela 2.11: Izločitve svinj po letih na kmetijah

Leto	MLADICE							STARE SVINJE					
	Št. izl.	DOI (dni)	Izločitve		Vzrok izločitve			Št. izl.	DI (dni)	Izločitve		Vzrok izločitve	
			pred	po pr.	8	9	10			pred	po pr.	9	10
1984	0							50	95.6	66.0	34.0	14.0	14.0
1985	4	178.5						69	75.1	68.1	31.9	10.1	13.0
1986	7	138.2						83	59.5	78.3	21.7	7.2	6.0
1987	20	94.9						139	69.3	74.8	25.2	7.9	5.0
1988	6	144.0						112	77.6	70.5	29.5	1.8	5.4
1989	6	171.3						119	101.2	56.3	43.7	8.4	16.8
1990	6	139.3						102	73.7	76.5	25.5	10.8	6.9
1991	3	137.7						125	85.8	63.2	36.8	9.6	4.8
1992	0							105	92.0	59.1	40.9	14.3	6.7
1993	6	149.8						158	100.4	64.6	35.4	8.2	7.0
1994	17	168.6	52.9	47.1	17.6	29.4	5.9	127	101.1	71.7	28.3	12.6	6.3
1995	193	108.6	60.6	39.4	26.4	23.3	5.2	308	96.8	65.3	34.7	10.1	5.5
1996	495	95.2	57.4	42.6	30.7	31.9	4.4	423	105.2	58.9	41.1	13.2	8.7
1997	524	116.3	52.7	47.3	22.1	27.7	10.9	422	109.9	55.0	45.0	19.9	8.1
1998	563	108.2	51.5	48.5	17.9	30.0	9.6	638	107.8	56.1	43.9	17.7	6.4
1999	551	113.5	57.9	42.1	18.1	28.9	8.3	730	121.5	49.7	50.3	18.6	9.2
2000	510	113.9	45.1	54.9	21.4	37.8	7.6	634	110.5	49.1	50.9	15.5	10.1
2001	619	110.4	45.4	54.6	21.5	34.9	10.8	780	109.0	48.6	51.4	17.4	12.4
2002	474	108.8	48.9	51.1	21.9	33.8	8.6	769	105.5	51.6	48.4	17.9	10.0
2003	684	125.9	52.2	47.8	21.3	39.5	6.6	915	121.8	43.7	56.3	22.4	9.4
2004	577	113.2	57.4	42.6	22.4	22.9	7.8	974	138.7	45.5	54.5	17.5	10.9
2005	467	149.4	39.4	60.6	29.3	34.5	12.2	894	124.4	49.3	50.7	15.5	15.1
2006	625	123.9	62.6	37.4	42.6	22.7	7.4	924	130.6	49.1	50.9	21.8	9.5
2007	634	102.8	66.9	33.1	41.0	19.1	5.5	1008	124.3	53.5	46.5	17.4	10.6
2008	669	104.5	71.3	28.7	46.5	16.6	6.6	1001	136.3	46.7	53.3	20.0	11.5
2009	600	99.8	62.8	37.2	45.0	24.0	8.2	908	125.8	52.8	47.2	20.7	10.1
2010	585	116.7	58.1	41.9	29.6	21.7	13.2	966	129.8	51.8	48.2	22.5	11.9
2011	566	111.8	59.9	40.1	32.9	27.4	7.1	932	126.1	48.0	52.0	26.8	11.8
2012	613	104.7	54.3	45.7	30.7	27.6	11.3	959	103.8	56.6	43.4	21.5	8.8
2013	552	102.6	52.7	47.3	28.8	28.4	11.6	1095	110.4	55.4	44.6	19.6	10.1
2014	556	96.0	57.6	42.4	30.9	27.7	8.8	974	113.2	48.5	51.5	24.0	11.4
2015	454	116.9	54.0	46.0	32.4	26.9	13.2	903	134.7	46.7	53.3	24.8	14.5
2016	404	111.3	52.2	47.8	27.7	30.2	11.4	838	126.5	49.4	50.6	18.3	14.7
2017	444	108.9	47.1	52.9	27.9	32.0	14.9	845	133.2	50.1	49.9	20.1	15.5
2018	411	108.4	53.3	46.7	33.1	28.0	12.2	938	122.5	51.7	48.3	16.8	15.4
2019	396	110.1	51.0	49.0	30.3	26.3	12.4	856	122.5	53.2	46.8	18.0	12.9
2020	469	110.3	55.4	44.6	29.4	29.2	10.4	832	112.7	53.1	46.9	20.1	9.6
2021	593	94.0	55.1	44.9	24.1	28.8	11.3	889	117.0	53.5	46.5	19.0	13.8
2022	525	100.2	53.9	46.1	23.2	25.5	14.1	938	121.5	55.5	44.5	18.1	14.5

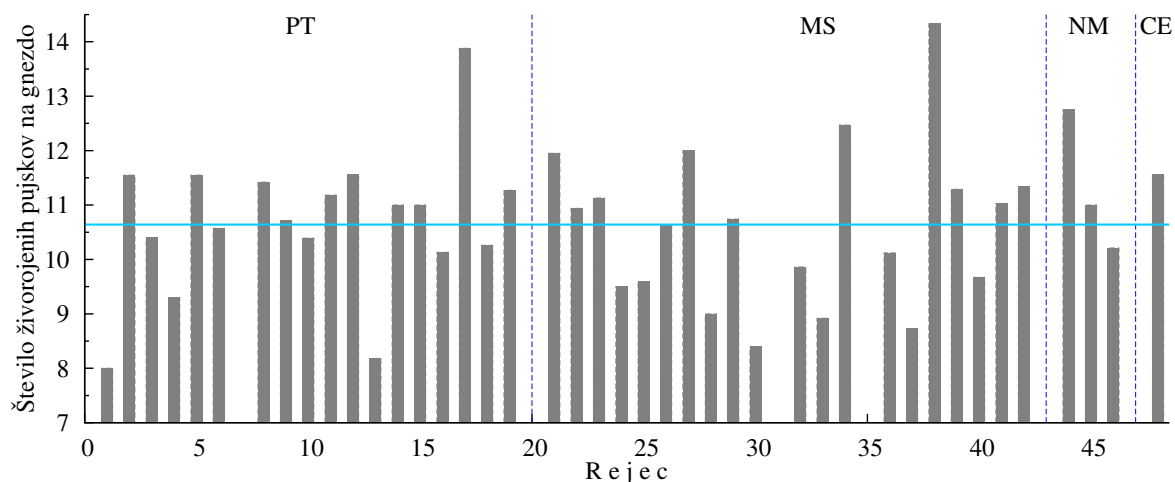
Poglavje 3

Grafični prikaz rezultatov plodnosti

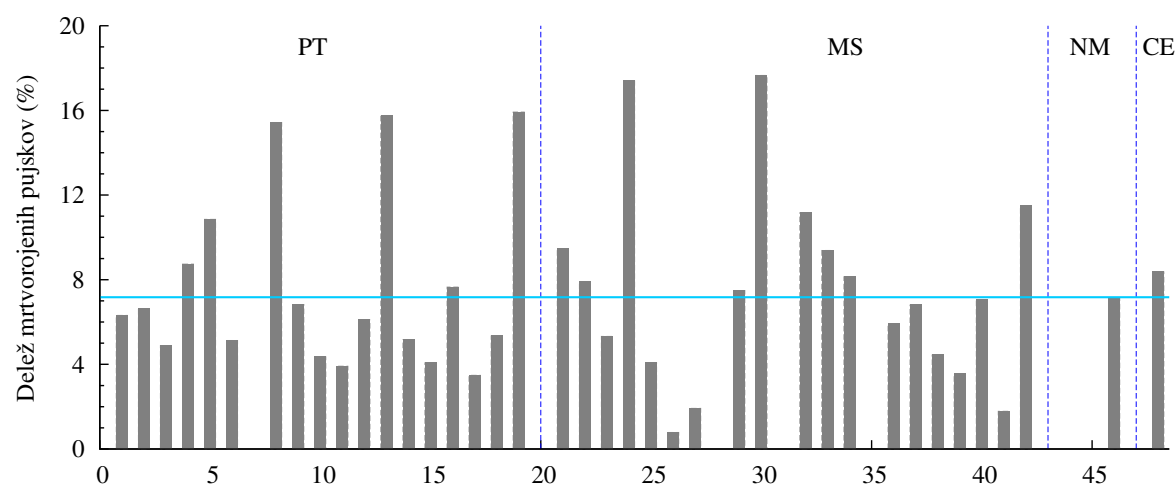
Pojasnila:

- **Modre črte in pike** prikazujejo skupno povprečje za vse kmetije
- **Sivi stolpci in pike** prikazujejo rezultat plodnosti kmetij v kontroli
- **Standard 1 oz. Primerjava 1** v grafih prikazuje rezultat plodnosti večje farme v Sloveniji
- **Standard 2** v grafih prikazuje rezultat plodnosti pridobljen iz literature

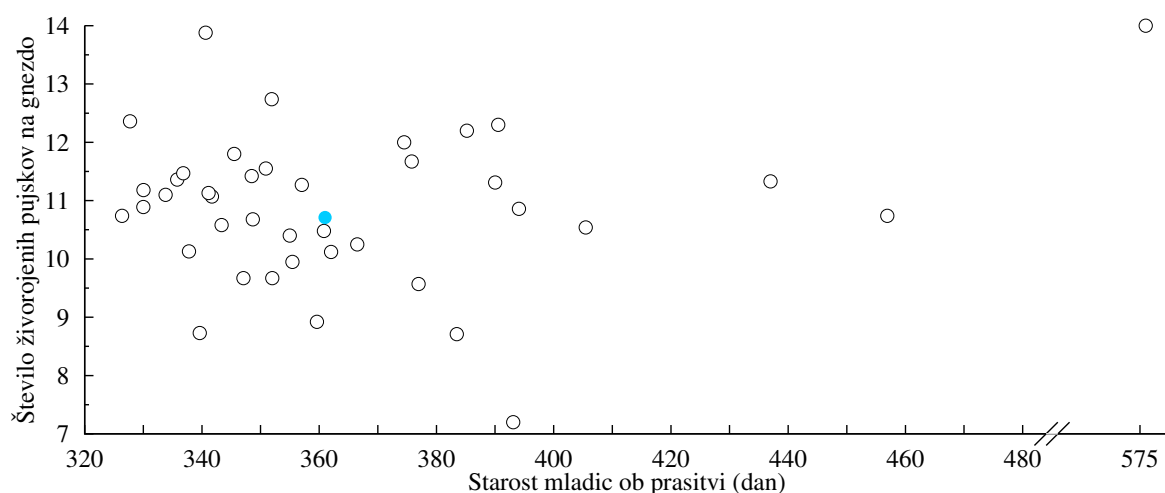
3.1 Plodnost mladic



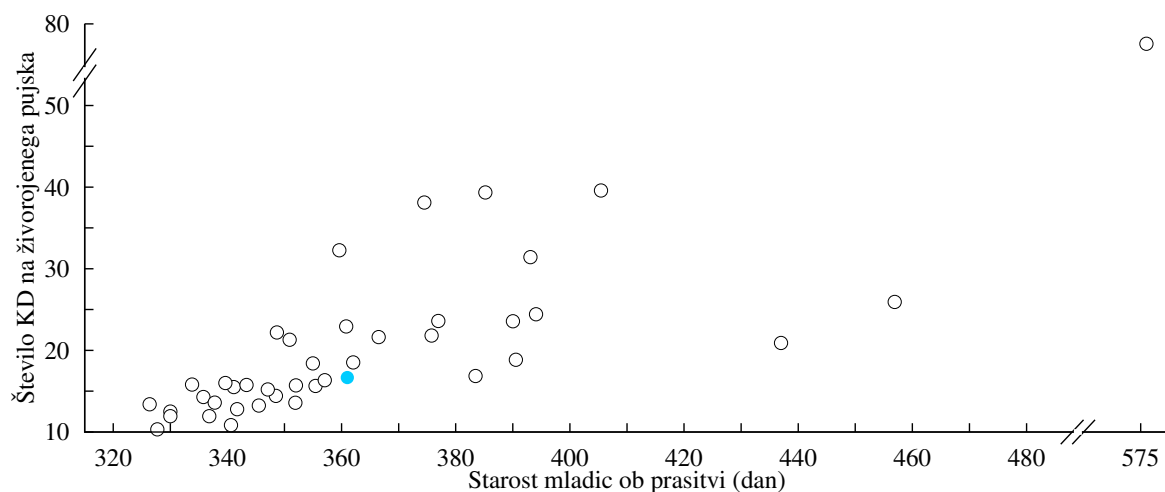
Slika 3.1: Število živorojenih pujskov pri mladicah na kmetijah po zavodih v Sloveniji v letu 2022



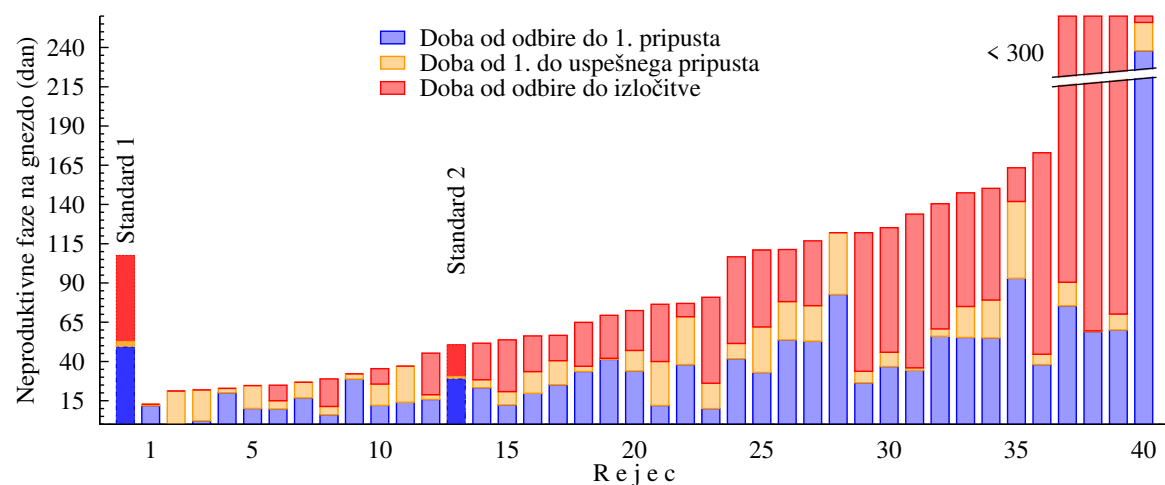
Slika 3.2: Delež mrtvorjenih pujskov pri mladicah na kmetijah po zavodih v Sloveniji v letu 2022



Slika 3.3: Število živorojenih pujskov na gnezdo in starost mladic ob praritvi na kmetijah v Sloveniji v letu 2022

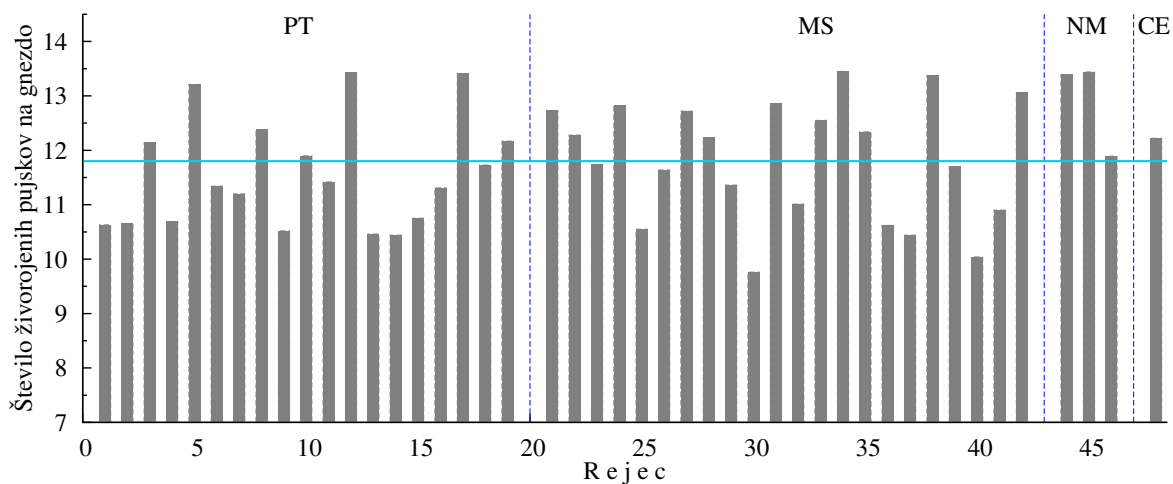


Slika 3.4: Število krmnih dni na živorojenega pujska in starost mladic ob praritvi na kmetijah v Sloveniji v letu 2022

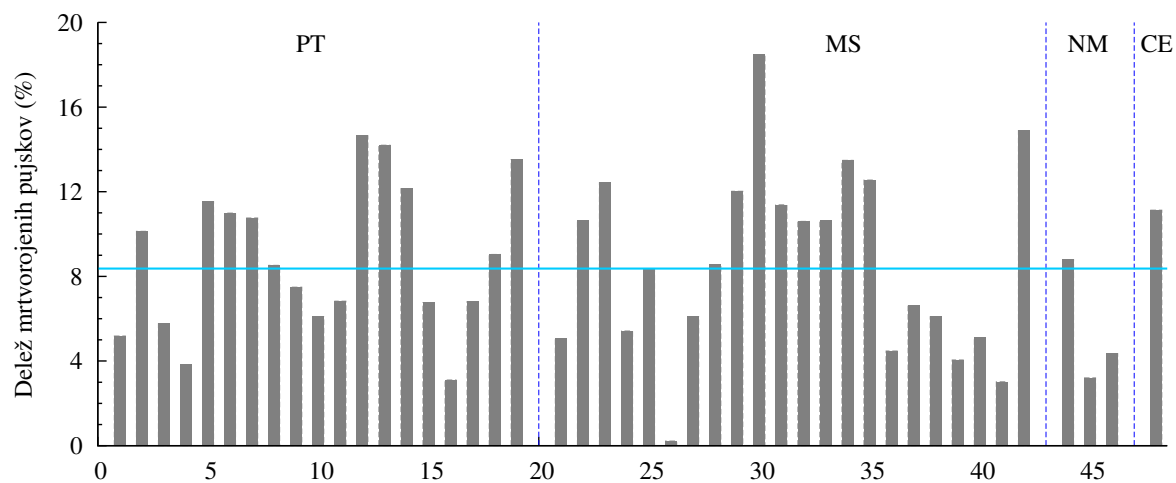


Slika 3.5: Dolžina neproduktivnih faz na gnezdo pri mladicah na kmetijah v letu 2022

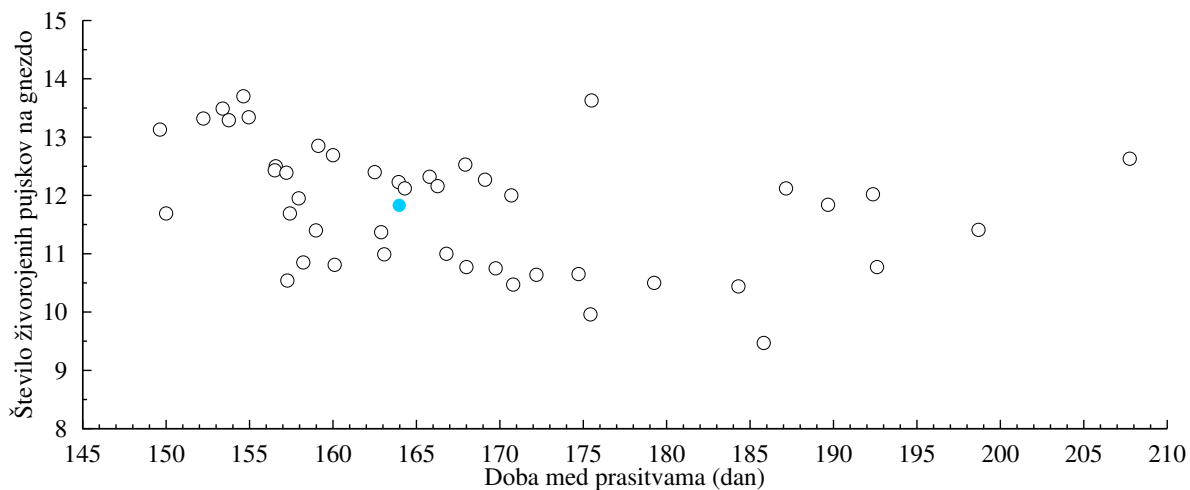
3.2 Plodnost starih svinj



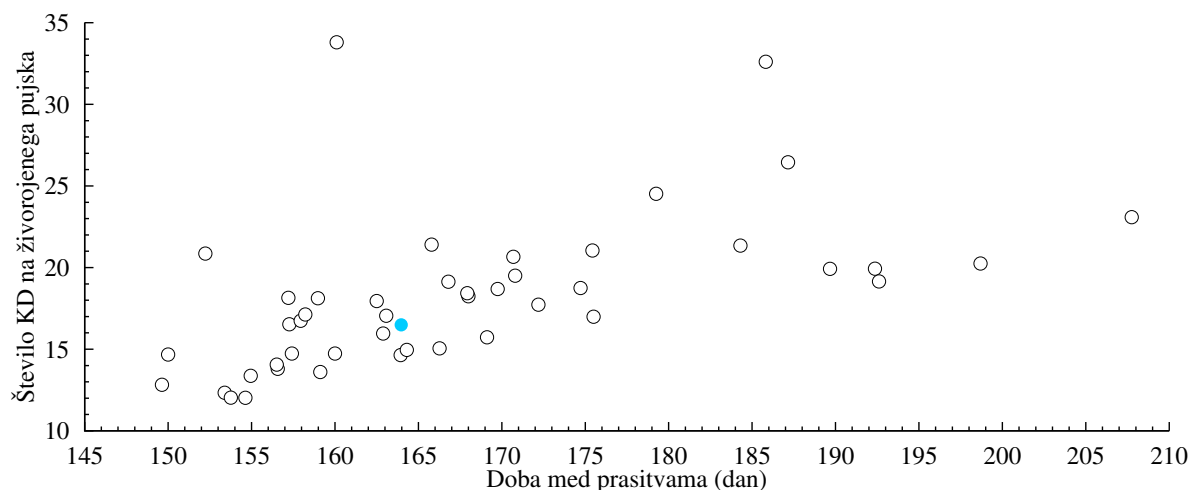
Slika 3.6: Število živorojenih pujskov pri starih svinjah na kmetijah po zavodih v Sloveniji v letu 2022



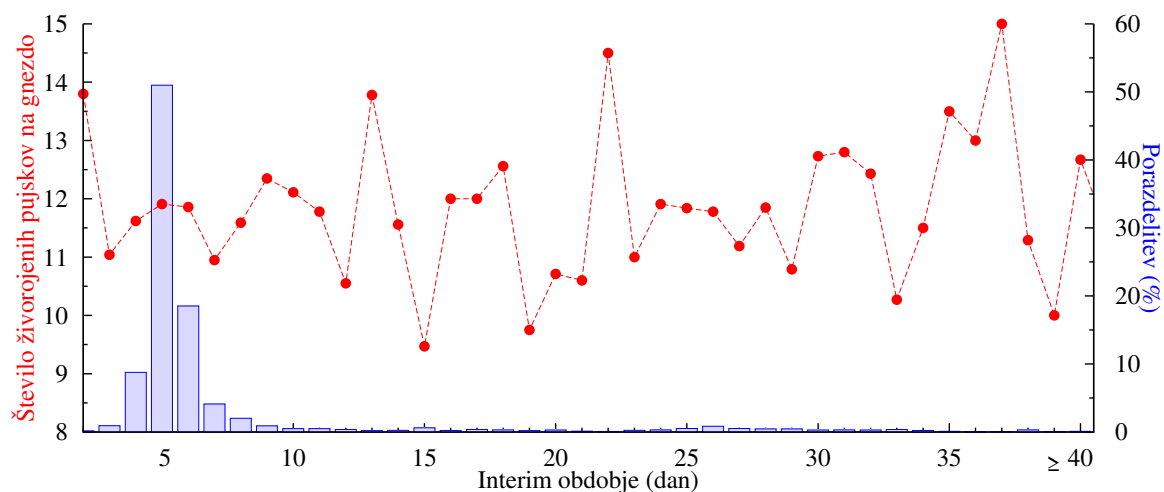
Slika 3.7: Delež mrtvorjenih pujskov pri starih svinjah na kmetijah po zavodih v Sloveniji v letu 2022



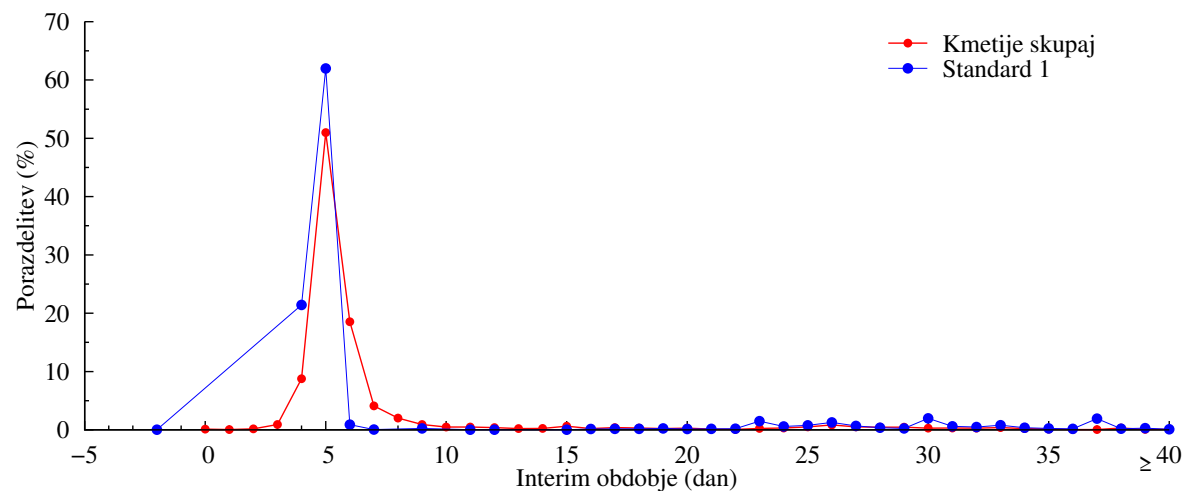
Slika 3.8: Število živorojenih pujskov na gnezdo in doba med praritvama na kmetijah v Sloveniji v letu 2022



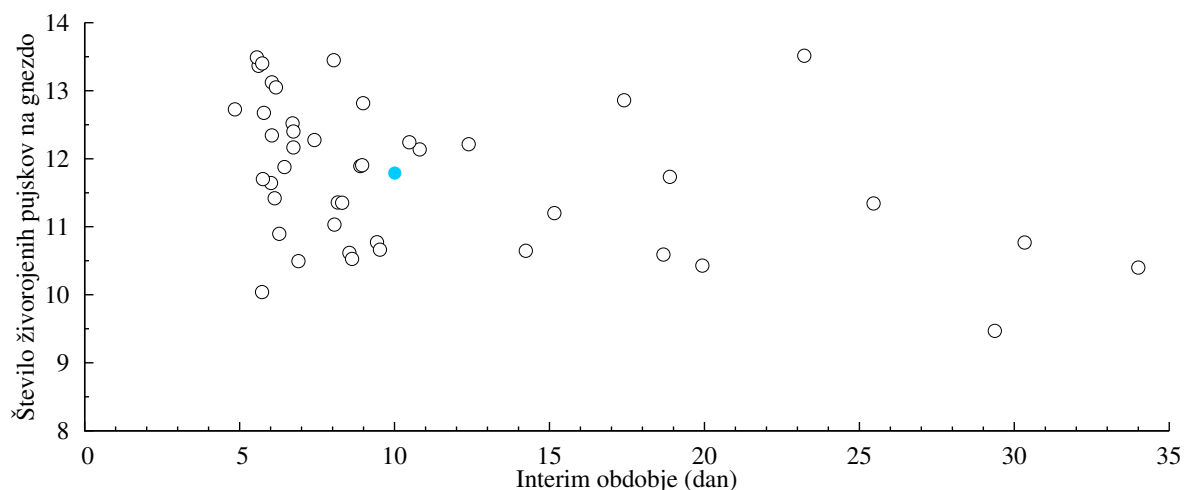
Slika 3.9: Število krmnih dni na živorojenega pujska in doba med prasitvama na kmetijah v Sloveniji v letu 2022



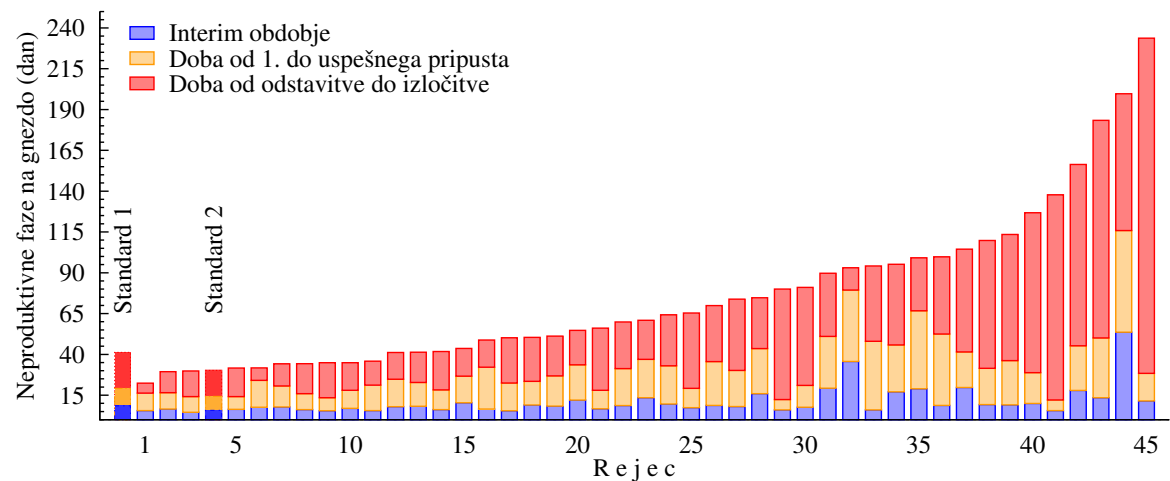
Slika 3.10: Dolžina interim obdobja in število živorojenih pujskov pri starih svinjah v letu 2022



Slika 3.11: Porazdelitev dolžine interim obdobja na kmetijah v Sloveniji v letu 2022 v primerjavi s standardi

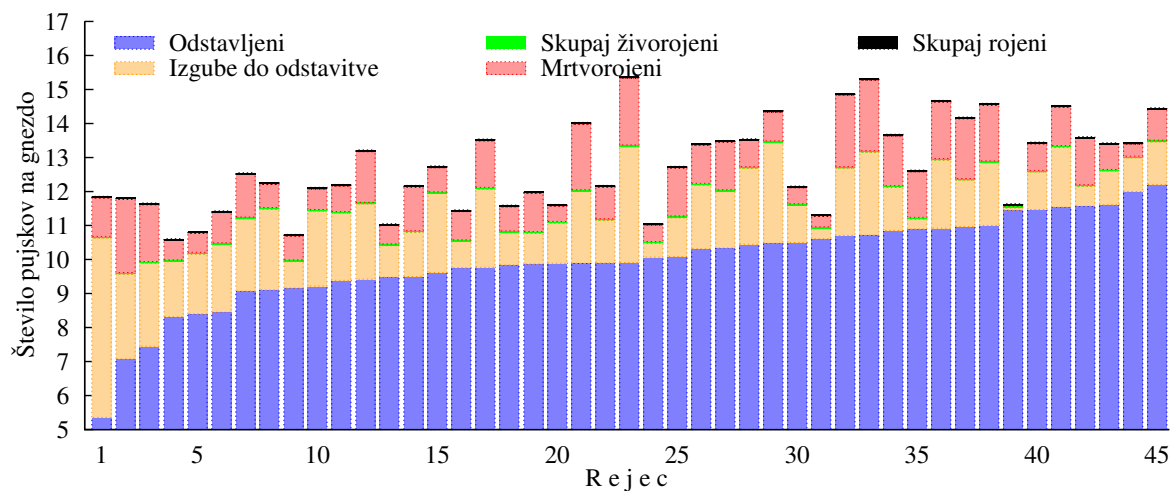


Slika 3.12: Dolžina interim obdobja in število živorojenih pujskov pri starih svinjah na kmetijah v Sloveniji v letu 2022

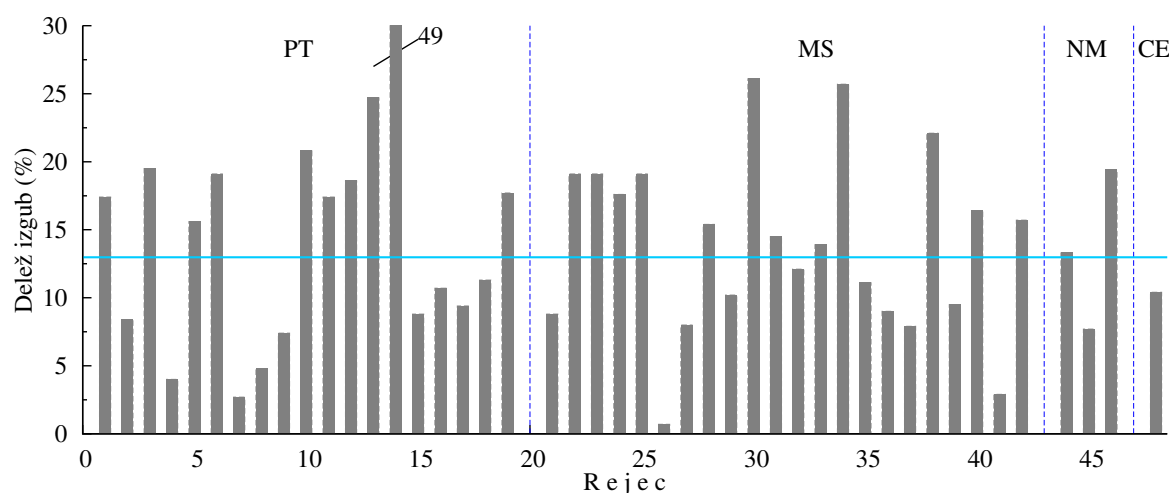


Slika 3.13: Dolžina neproduktivnih faz pri starih svinjah na kmetijah v Sloveniji v letu 2022

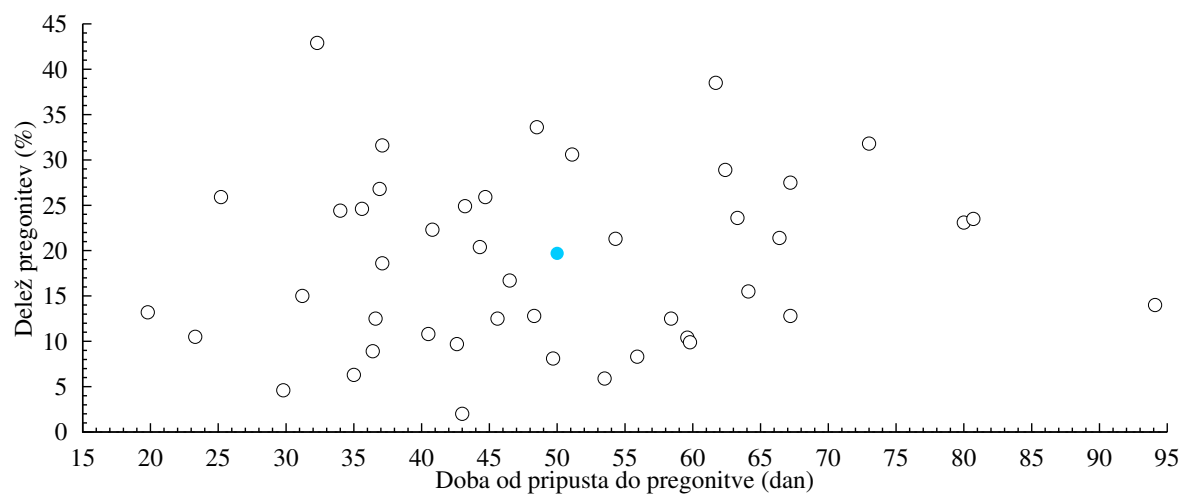
3.3 Plodnost svinj skupaj



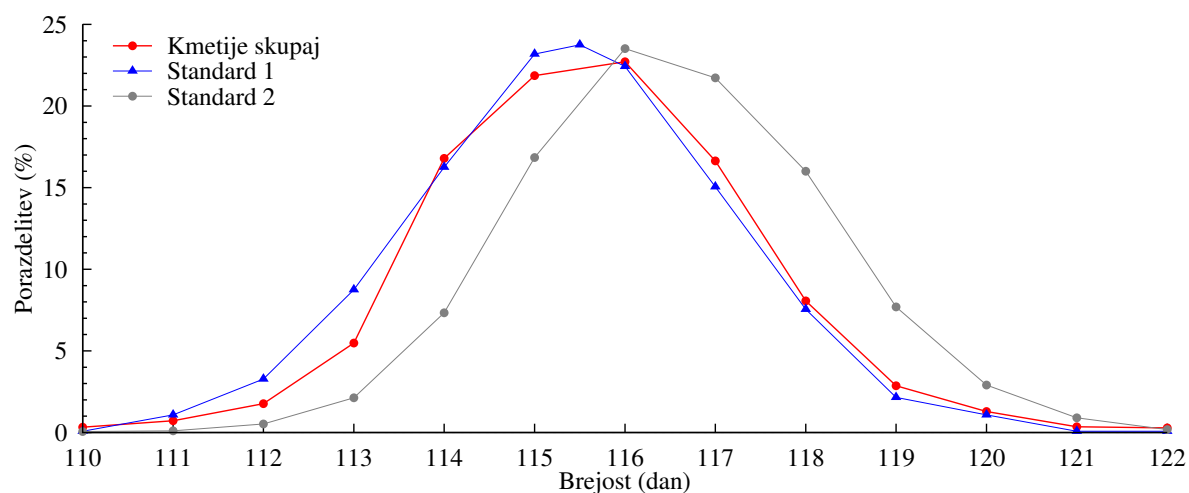
Slika 3.14: Velikost gnezda na kmetijah v letu 2022



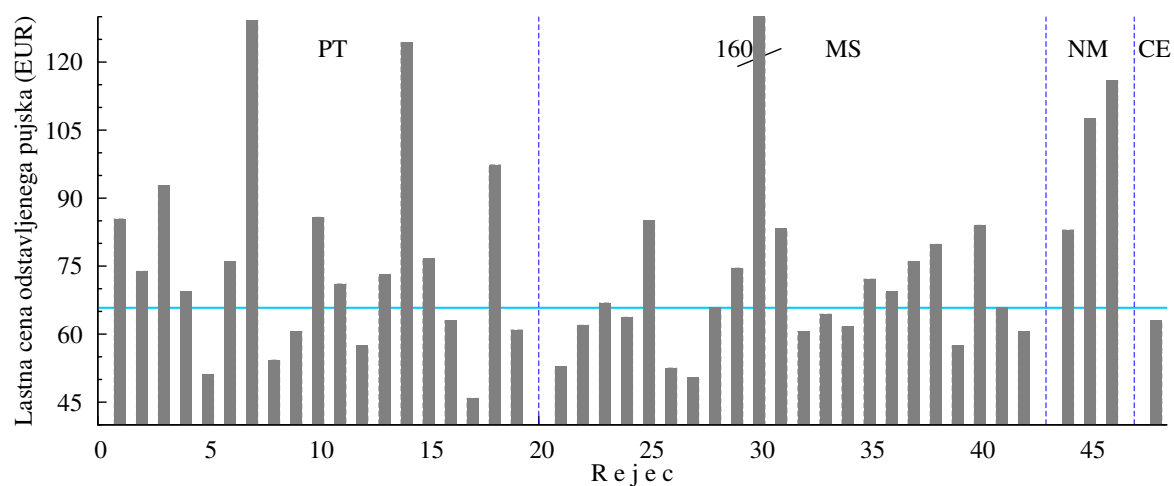
Slika 3.15: Delež izgubljenih pujskov na kmetijah po zavodih v Sloveniji v letu 2022



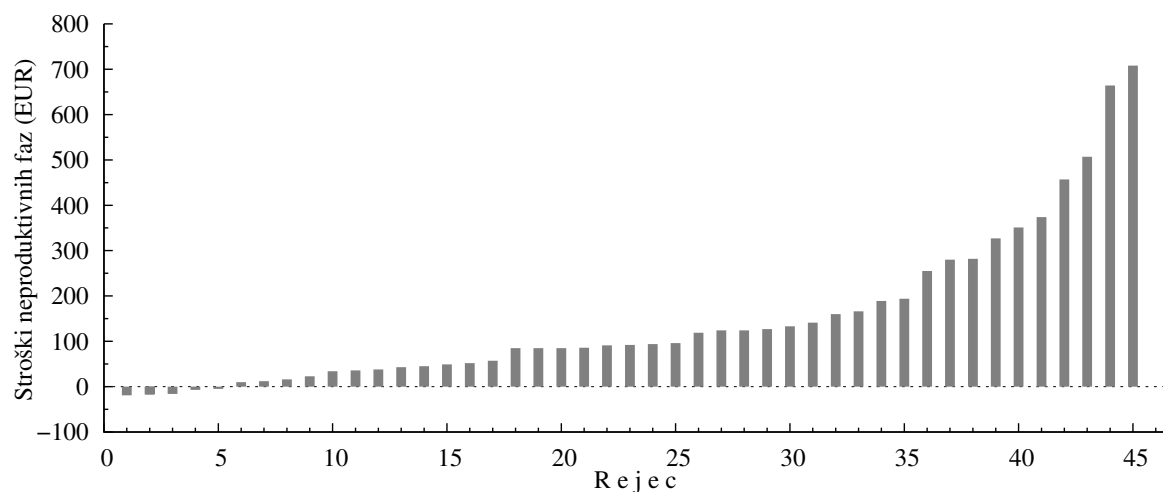
Slika 3.16: Delež prigonitev in doba od pripusta do prigonitve na kmetijah v Sloveniji v letu 2022



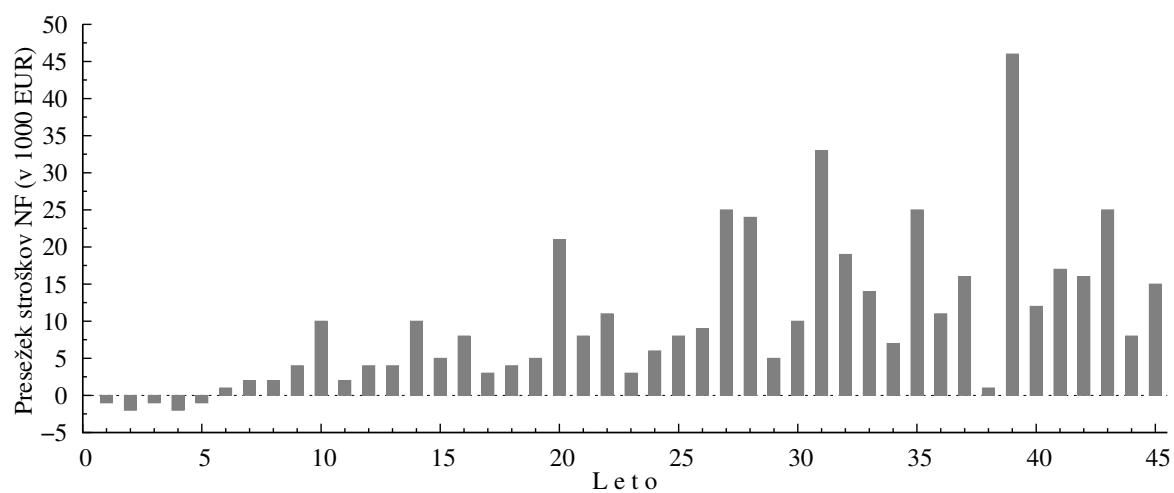
Slika 3.17: Porazdelitev dolžine brejosti na kmetijah v Sloveniji v letu 2022 v primerjavi s standardi



Slika 3.18: Lastna cena odstavljenega pujska v EUR na kmetijah v Sloveniji v letu 2022



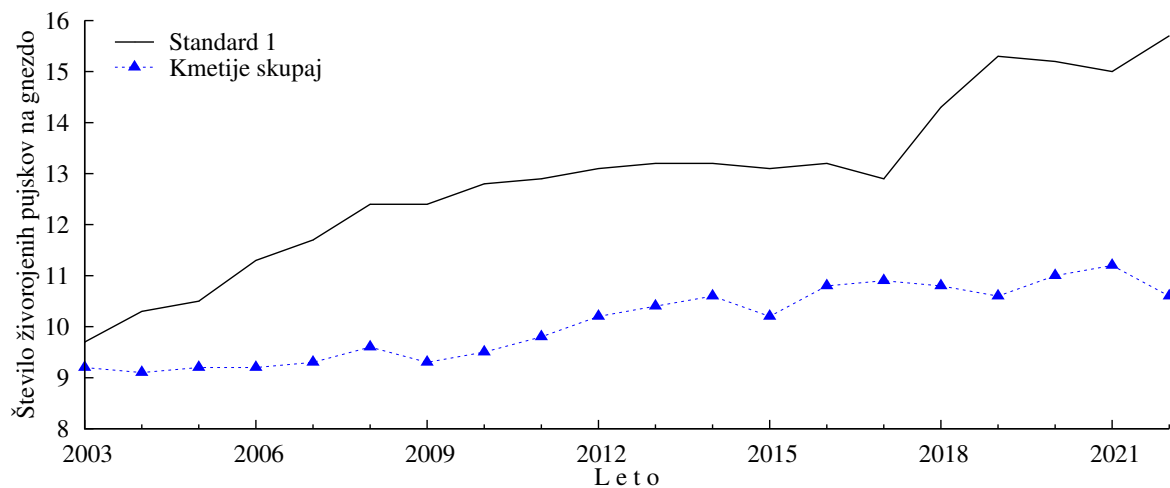
Slika 3.19: Dodatni stroški neproduktivnih faz na gnezdo v EUR na kmetijah v Sloveniji v letu 2022



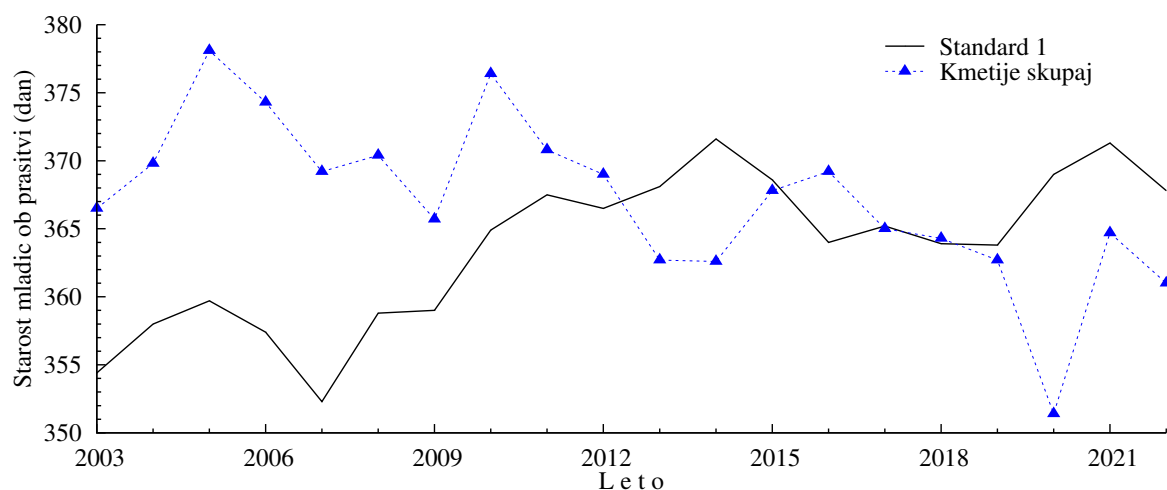
Slika 3.20: Dodatni stroški neproduktivnih faz na kmetijo v letu 2022

3.4 Spremembe rezultatov plodnosti po letih

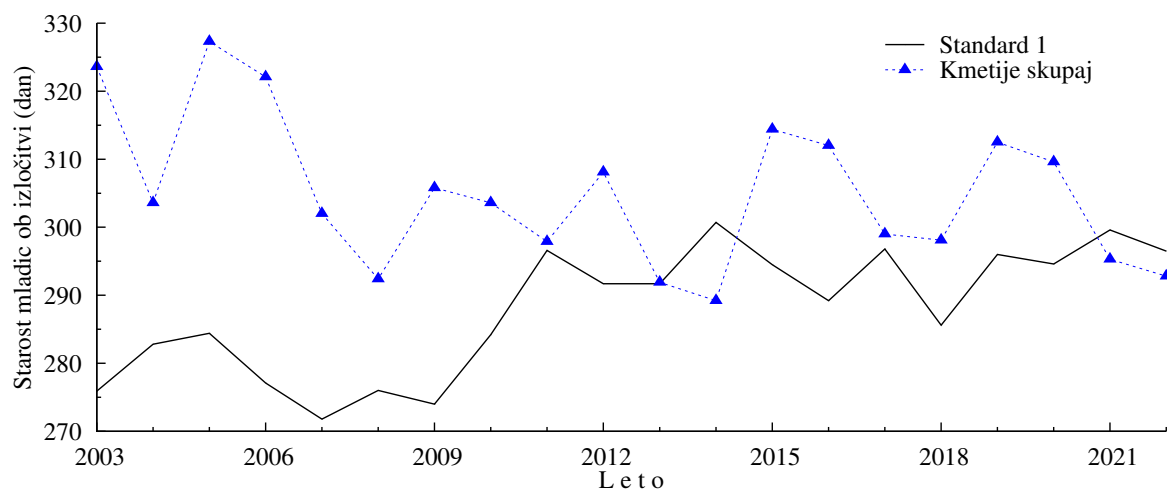
3.4.1 Plodnost mladic



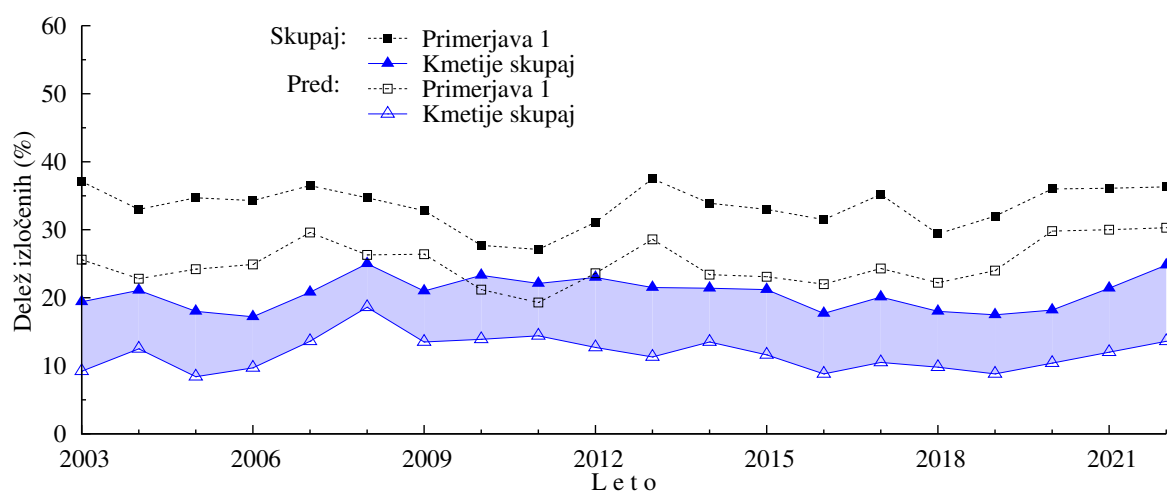
Slika 3.21: Število živorojenih pujskov pri mladicah po letih



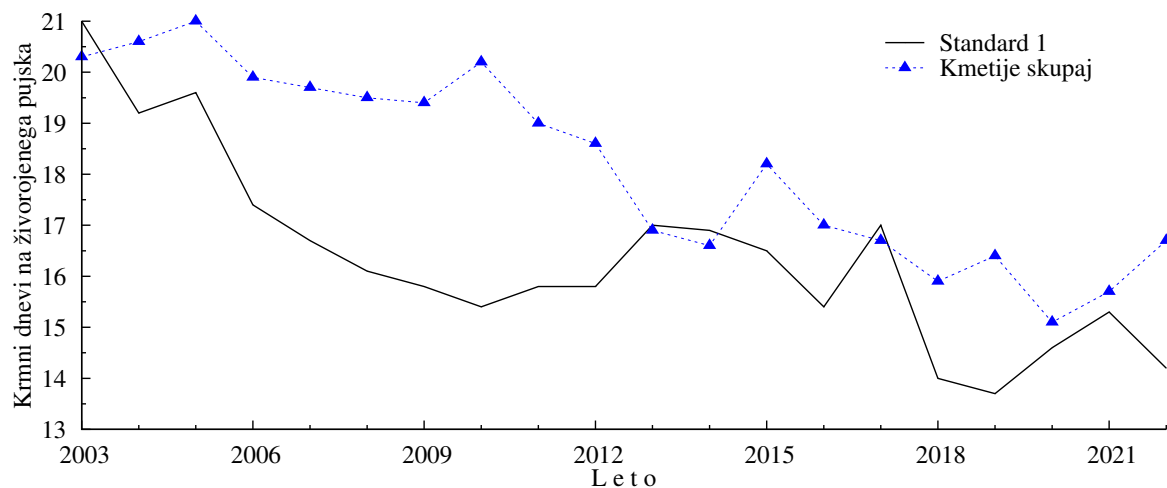
Slika 3.22: Starost mladic ob prasniti po letih



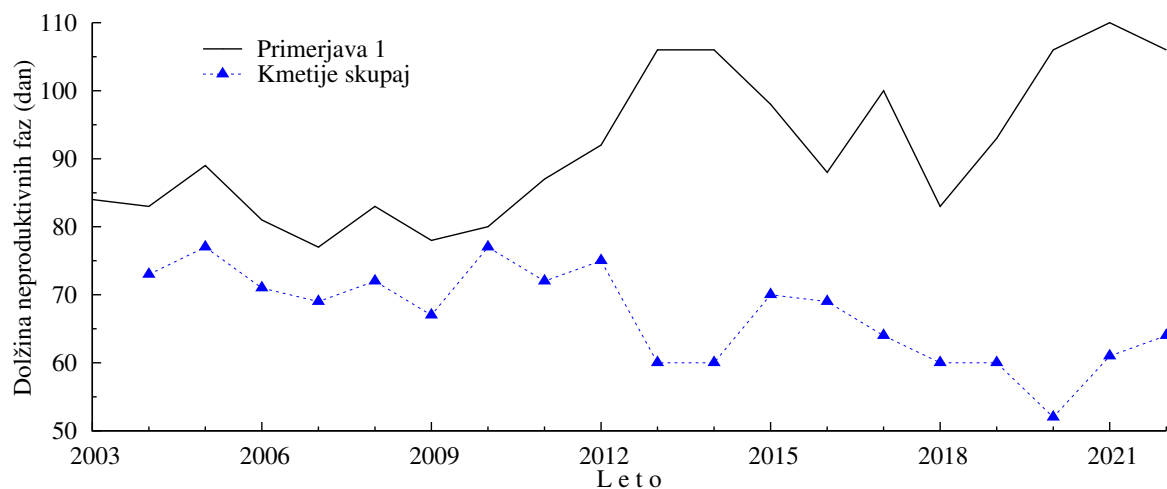
Slika 3.23: Starost mladic ob izločitvi po letih



Slika 3.24: Delež izločenih mladic pred (prazni znaki) in po (obarvani del) pripustih ter skupaj (polni znaki) po letih

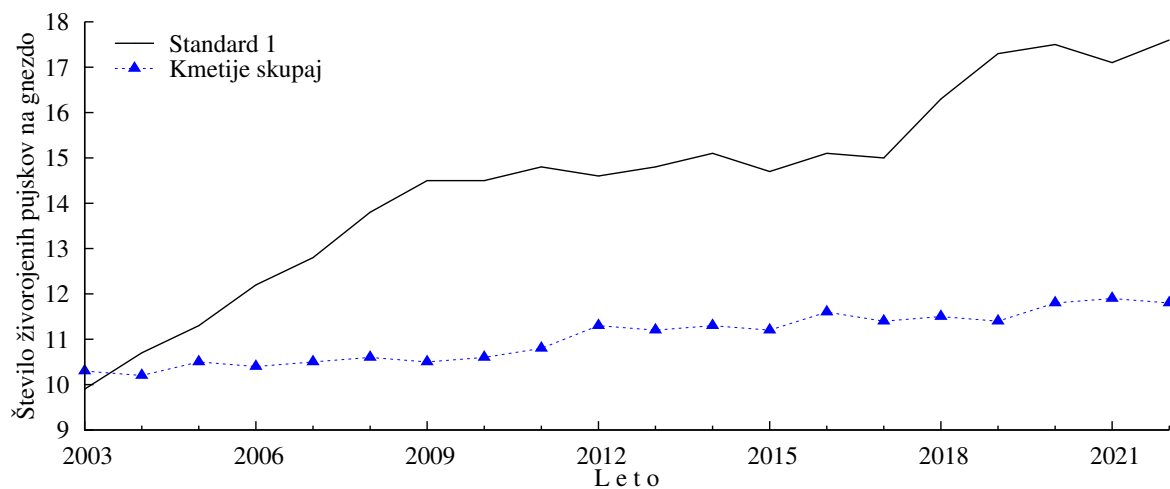


Slika 3.25: Število krmnih dni na živorojenega pujska pri mladicah po letih

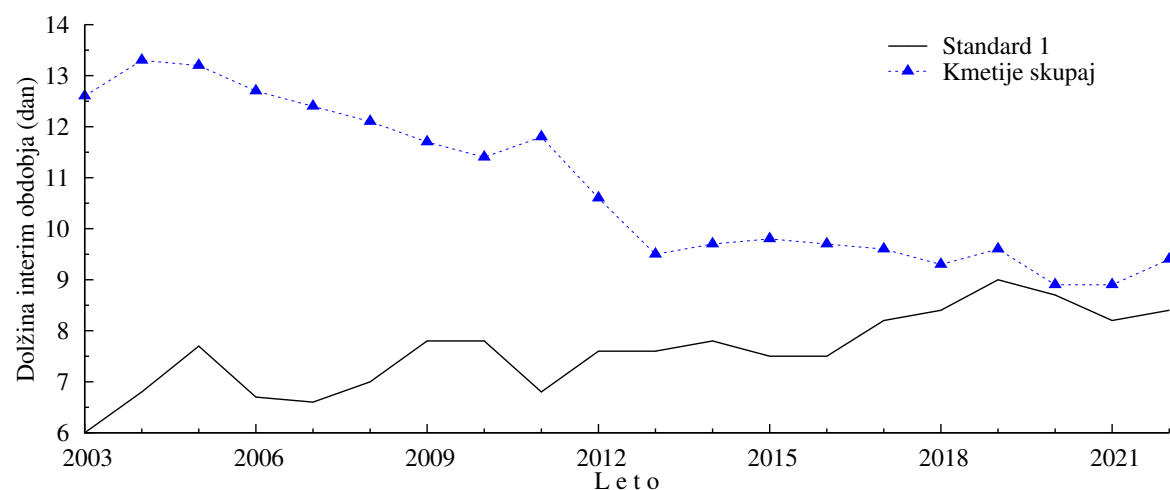


Slika 3.26: Dolžina neproduktivnih faz pri mladicah po letih

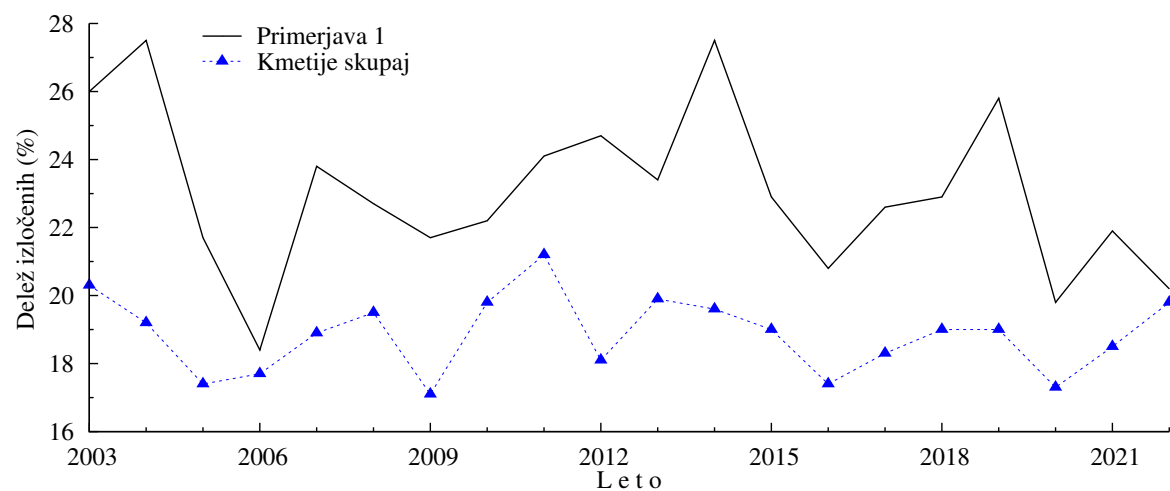
3.4.2 Plodnost starih svinj



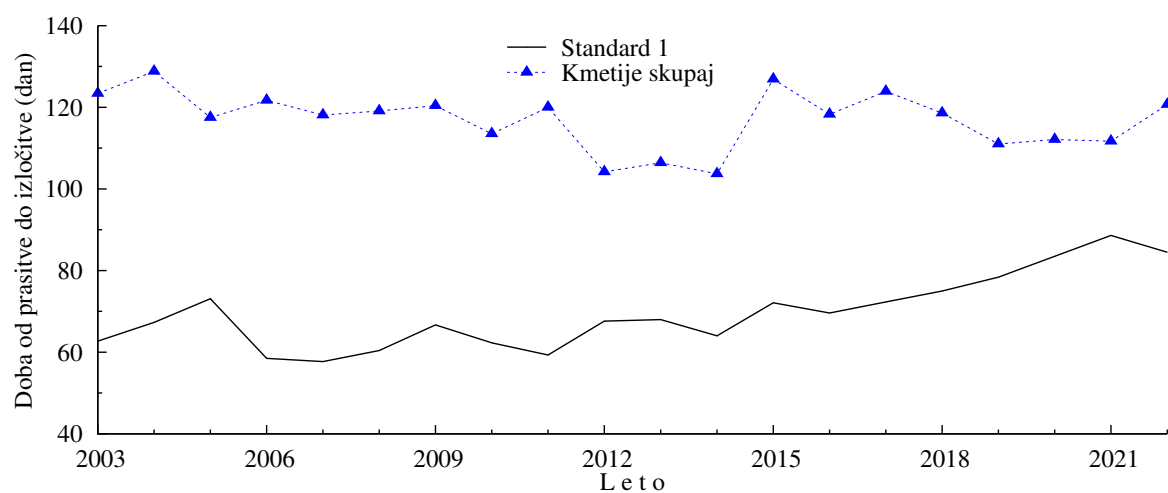
Slika 3.27: Število živorojenih pujskov pri starih svinjah po letih



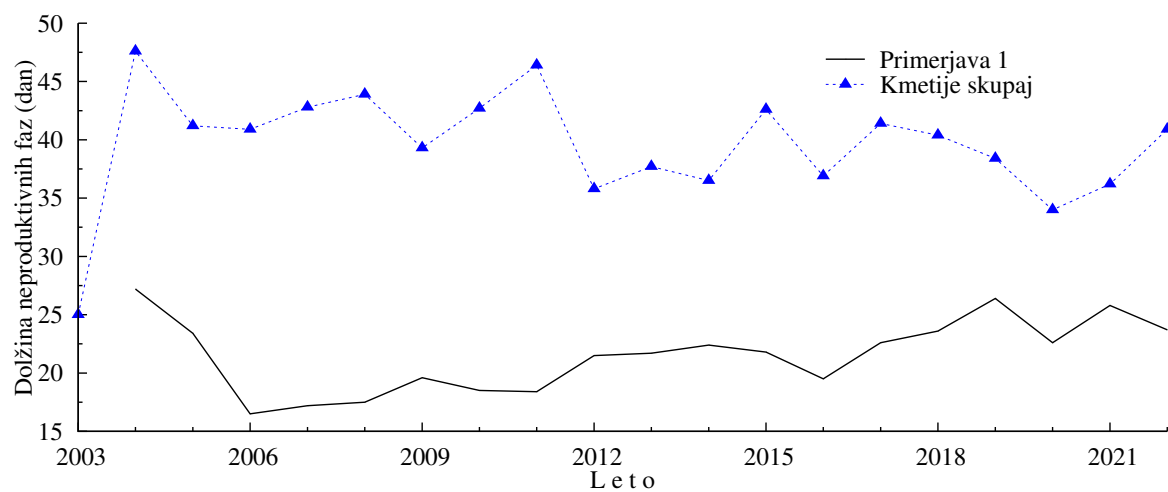
Slika 3.28: Dolžina interim obdobja pri starih svinjah po letih



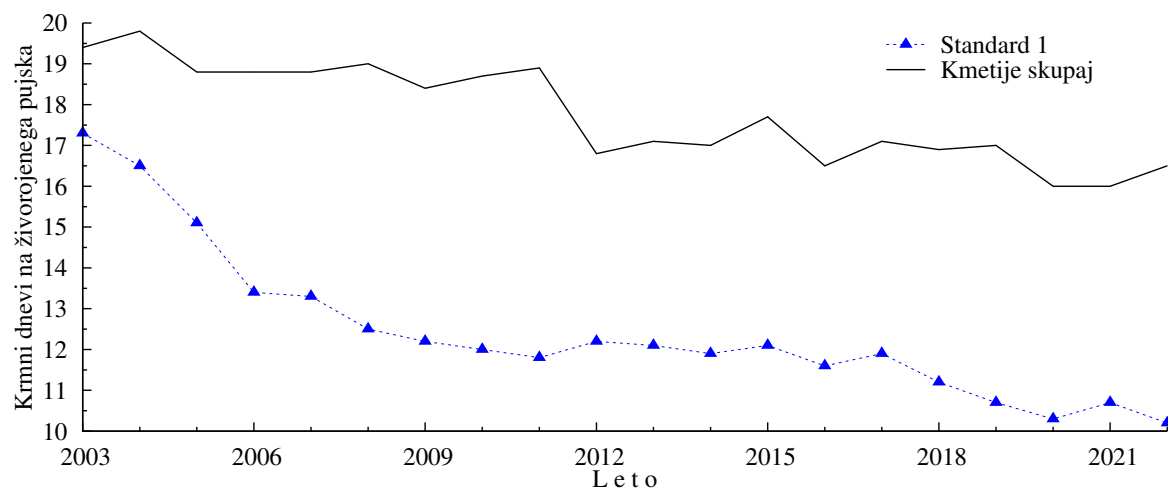
Slika 3.29: Delež izločenih starih svinj po letih



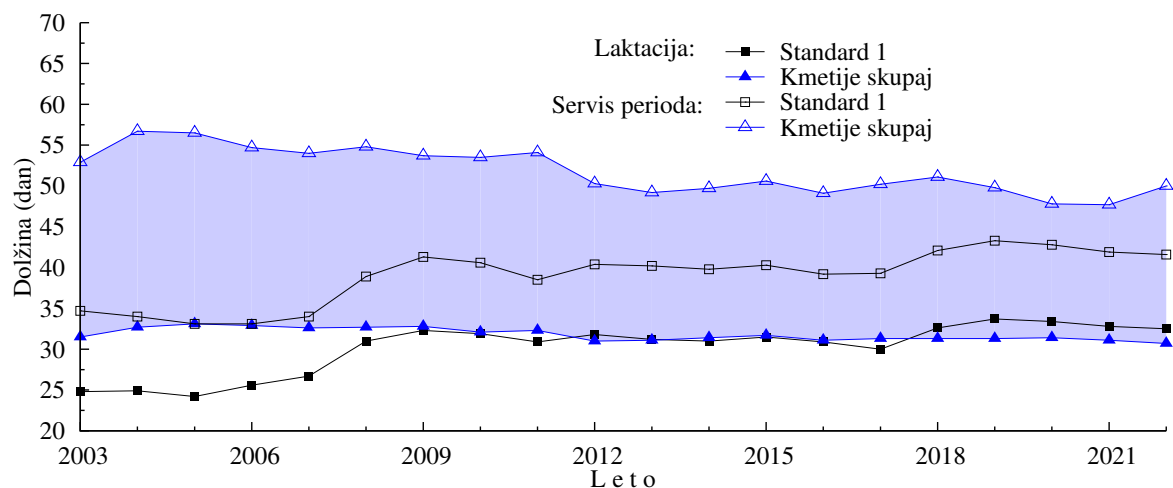
Slika 3.30: Doba od prasitve do izločitve pri starih svinjah po letih



Slika 3.31: Dolžina neproduktivnih faz pri starih svinjah po letih

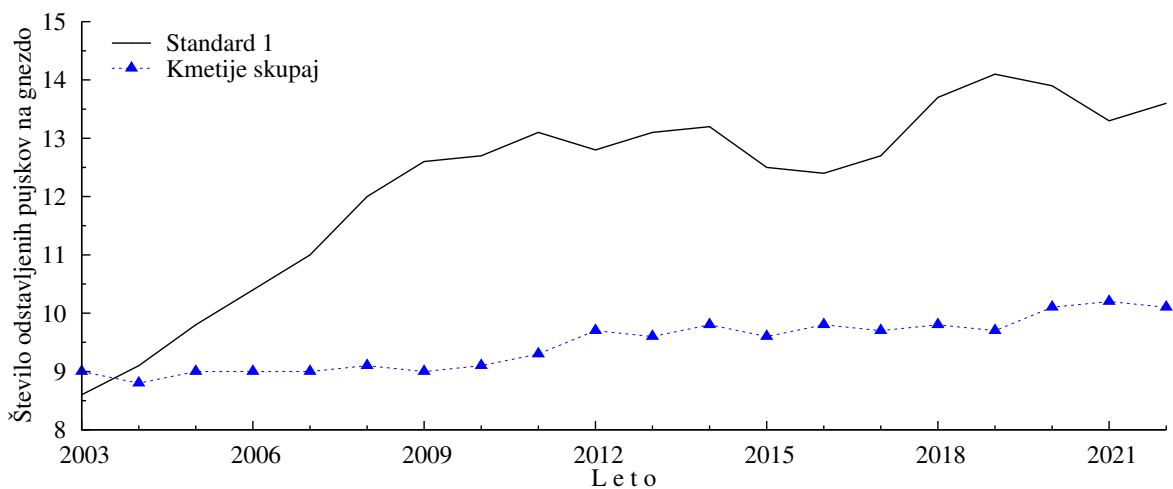


Slika 3.32: Število krmnih dni na živorojenega pujska pri starih svinjah po letih

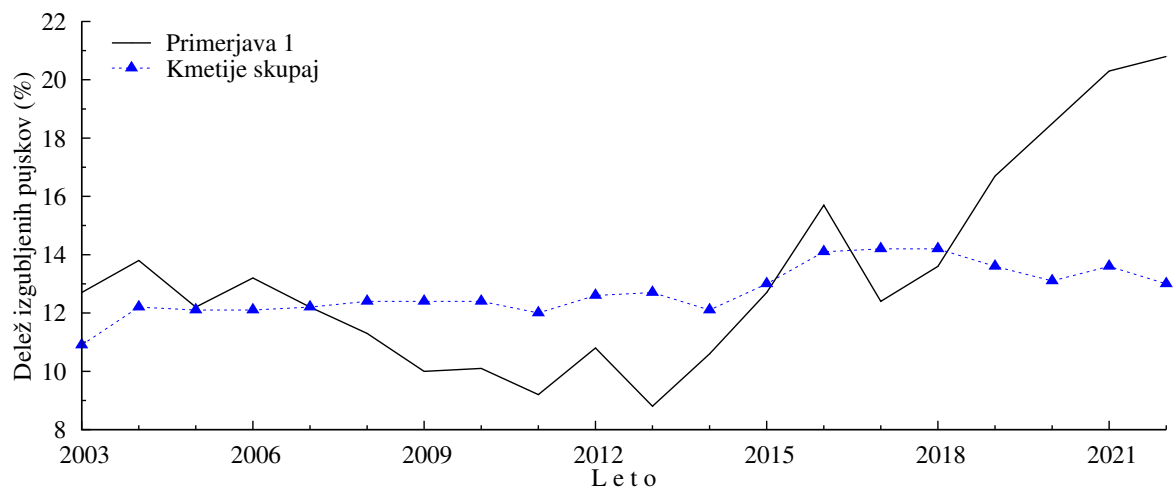


Slika 3.33: Dolžina laktacije, podstavitvenega premora (obarvani del) in servis periode pri starih svinjah po letih

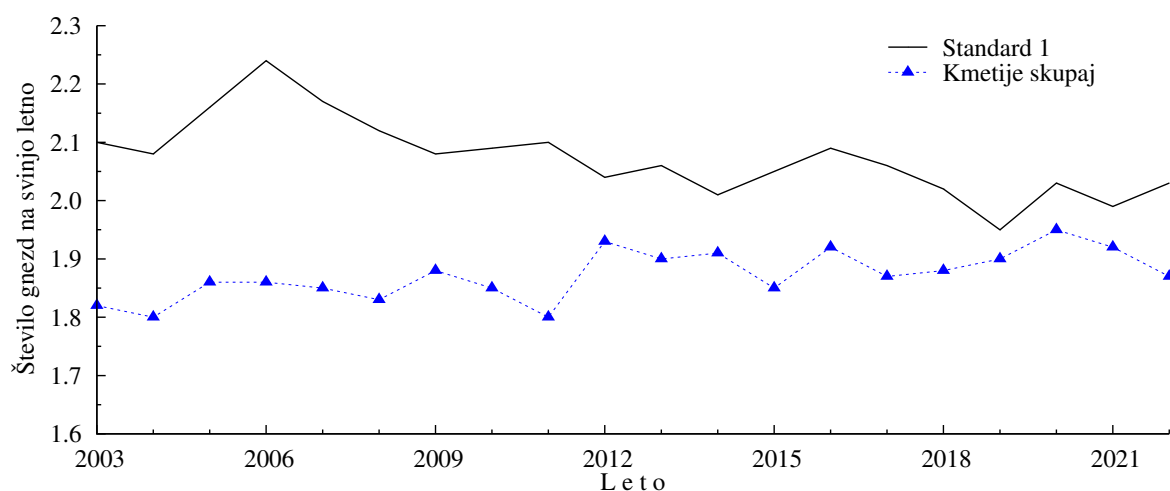
3.4.3 Plodnost svinj skupaj



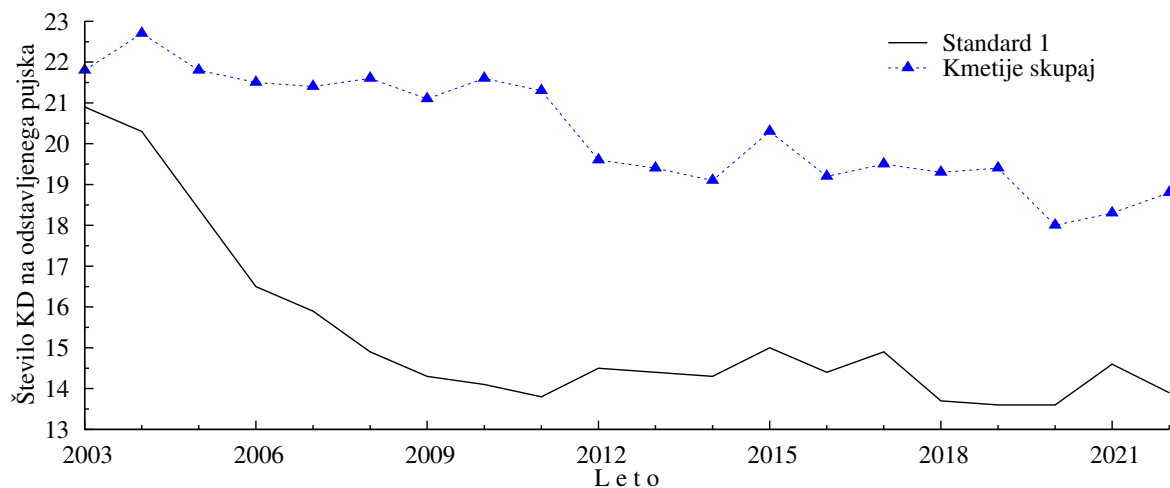
Slika 3.34: Število odstavljenih pujskov na gnezdo po letih



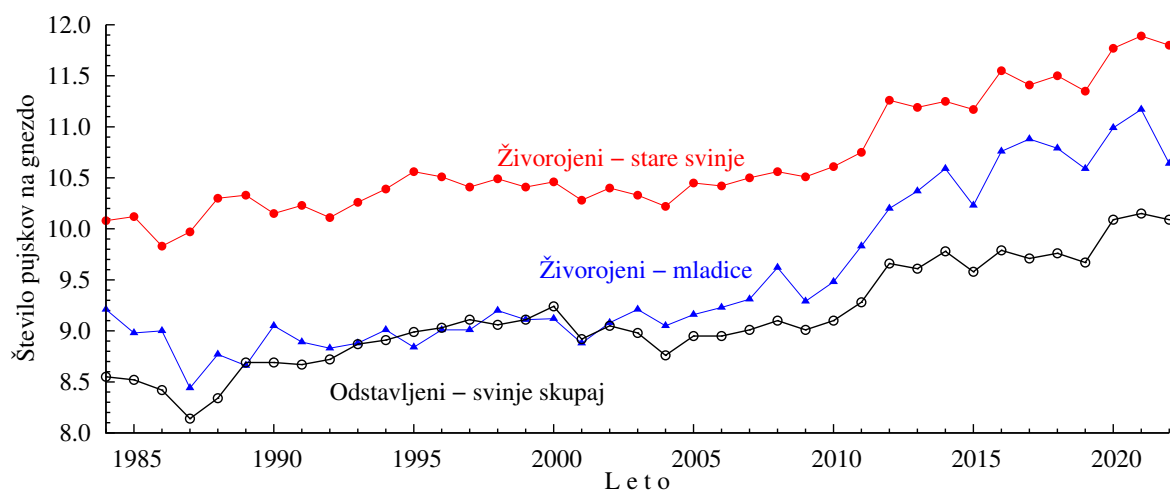
Slika 3.35: Delež izgubljenih pujskov po letih



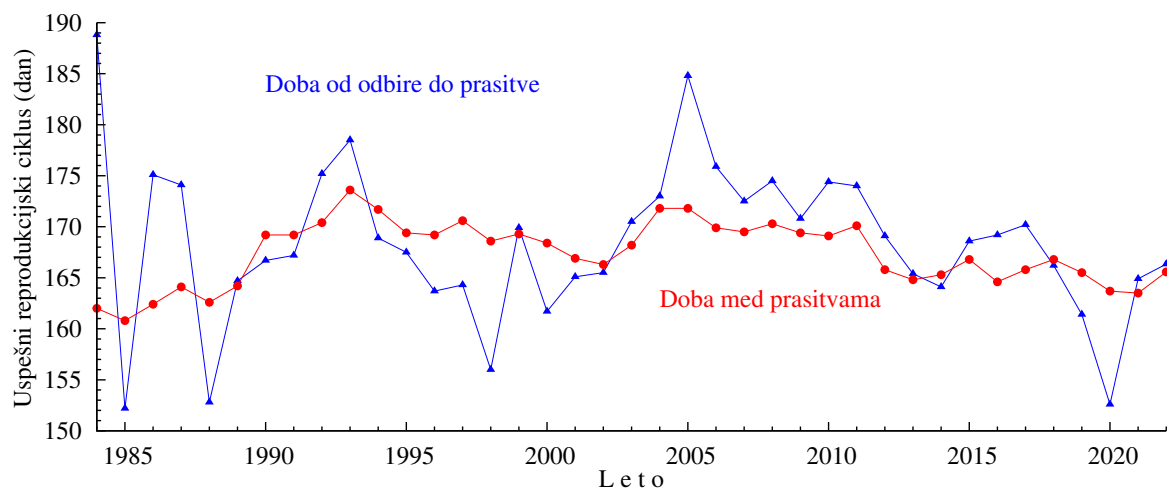
Slika 3.36: Število gnezd na svinjo letno po letih



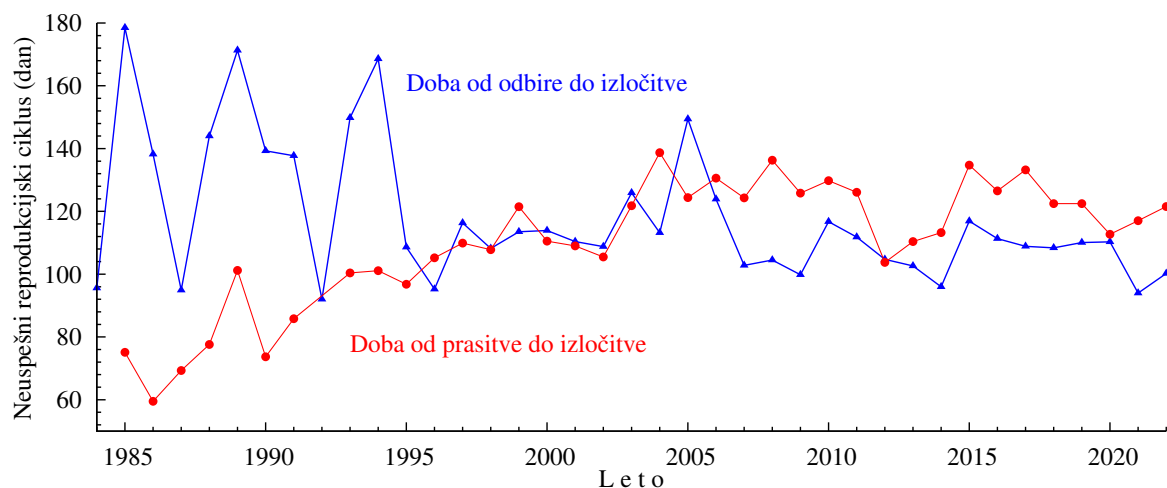
Slika 3.37: Število krmnih dni na odstavljenega pujska po letih



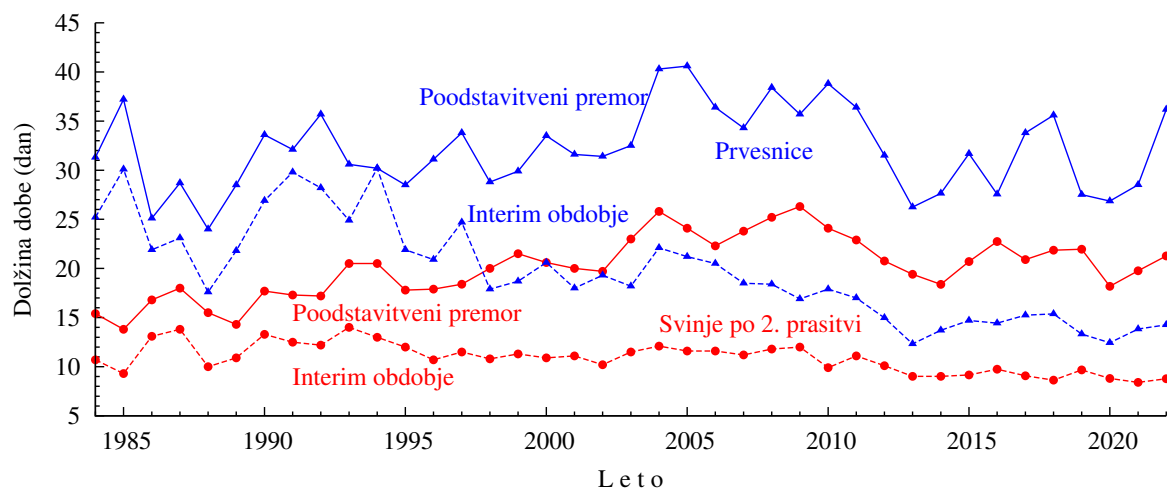
Slika 3.38: Število živorojenih in odstavljenih pujskov na gnezdo pri mladicah in starih svinjah na kmetijah v Sloveniji po letih



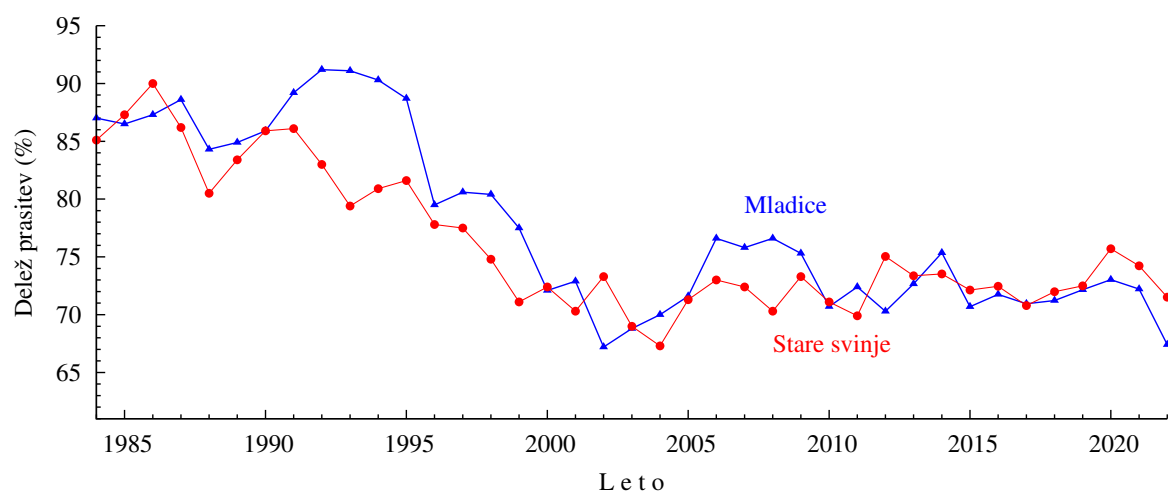
Slika 3.39: Dolžina uspešnega reprodukcijskega ciklusa pri mladiah in starih svinjah na kmetijah v Sloveniji po letih



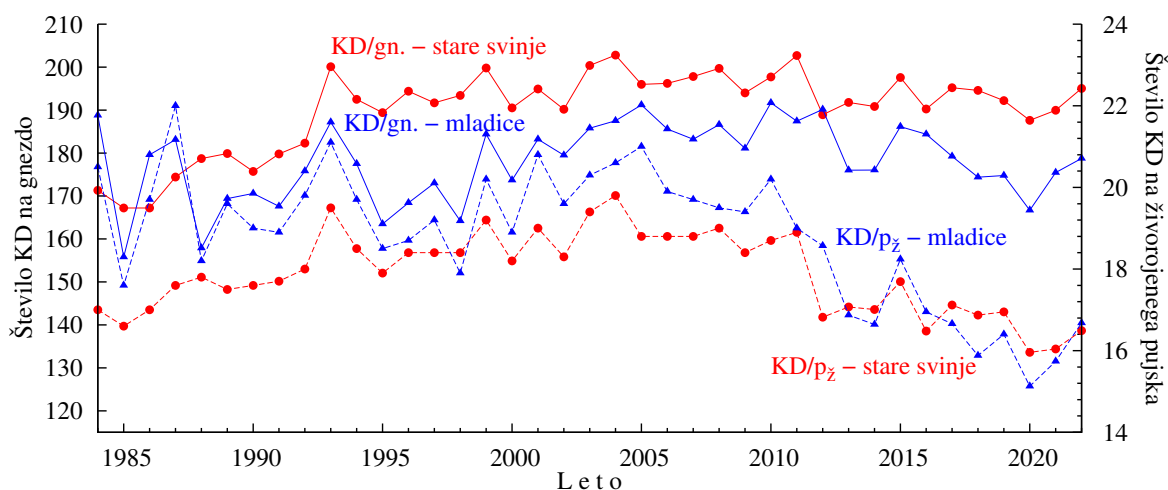
Slika 3.40: Dolžina neuspešnega reprodukcijskega ciklusa na kmetijah v Sloveniji po letih



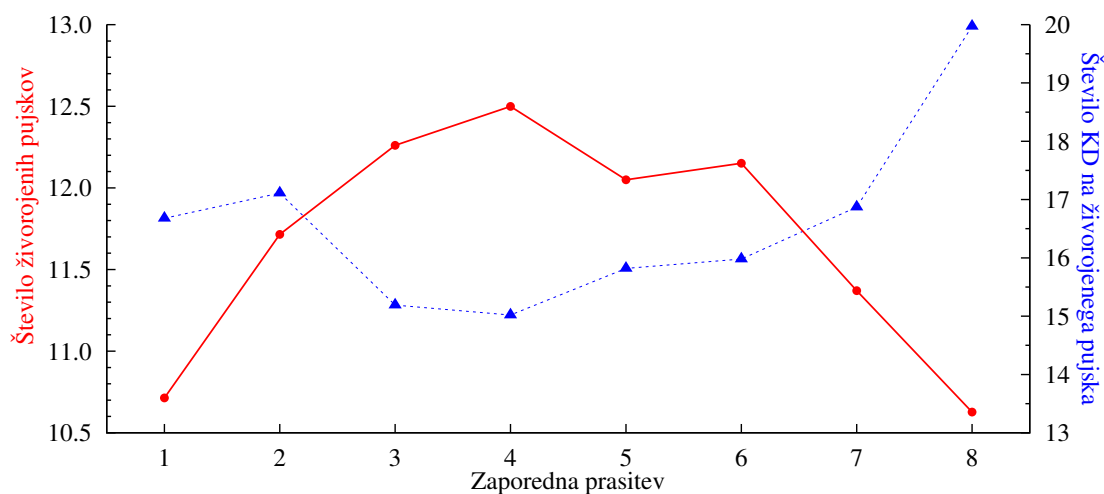
Slika 3.41: Dolžina poodstavitvenega premora in interim obdobja pri prvesnicah in svinjah po 2. prاسitvi na kmetijah v Sloveniji po letih



Slika 3.42: Delež prasitev pri mladících in starih svinjäh na kmetijäh v Sloveniji po letih

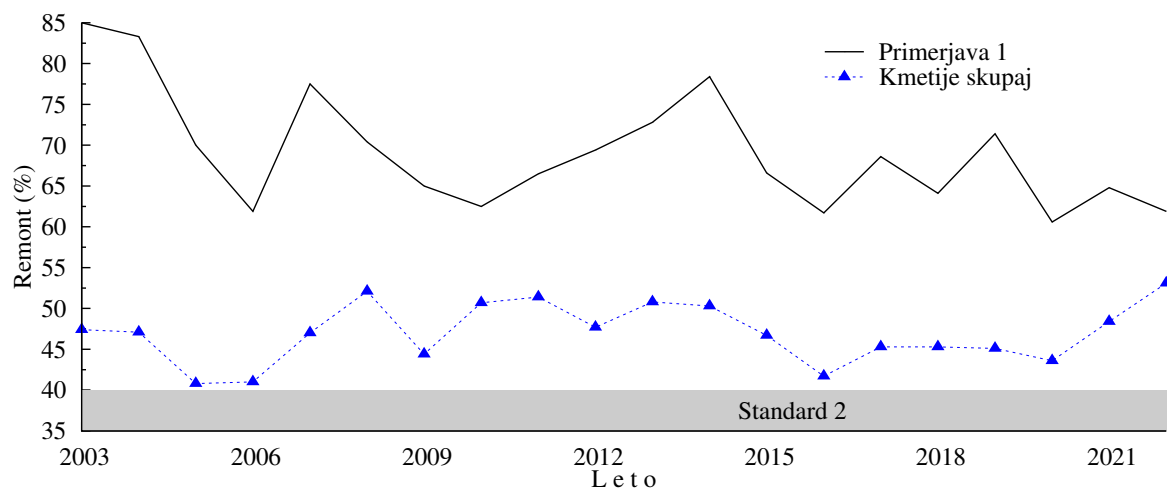


Slika 3.43: Število KD (krmnih dni) na gnezdo pri mladících in starih svinjäh (polna črta) ter na živorojenega pujska pri mladících in starih svinjäh (črtkana črta) na kmetijäh v Sloveniji po letih

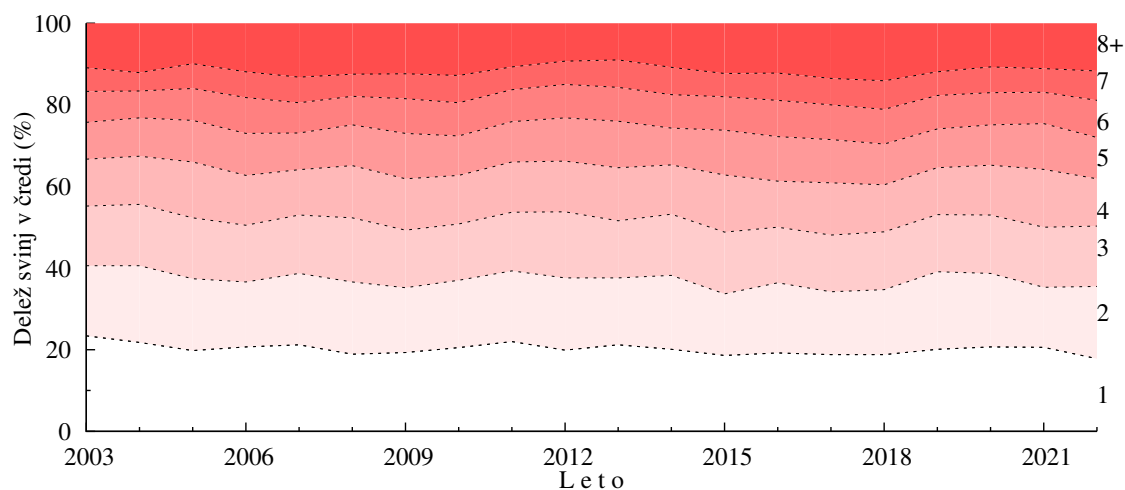


Slika 3.44: Število živorojenih pujskov in število KD (krmnih dni) na živorojenega pujska po zaporednih prasitvah v letu 2022

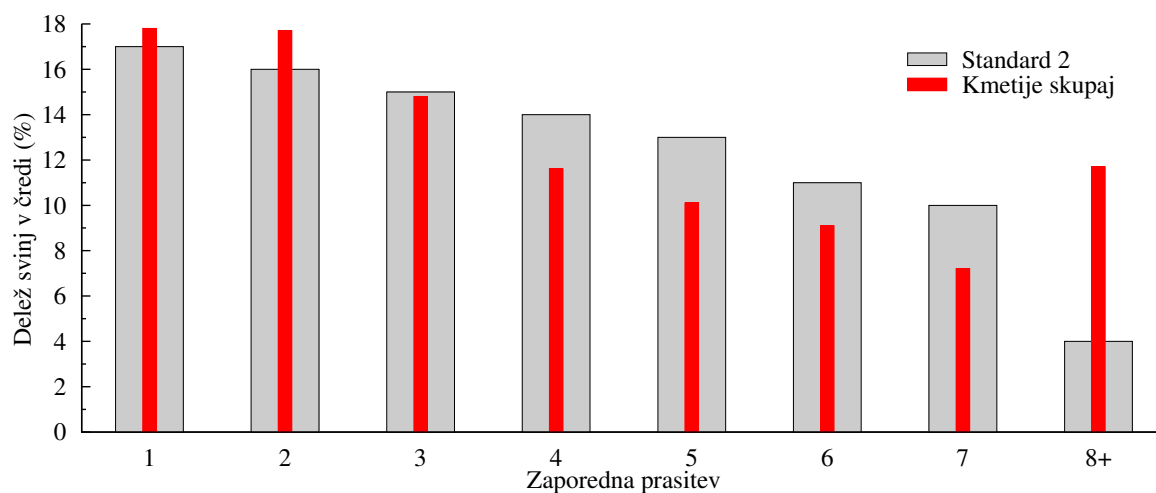
3.4.4 Starostna struktura črede



Slika 3.45: Remont po letih



Slika 3.46: Starostna struktura črede po zaporedni prasiatvi po letih



Slika 3.47: Starostna struktura črede po zaporednih prasiatvah v letu 2022