

---

Oddelek za zootehniko

Groblje 3, Domžale

Tel.: 01-3203-920

Fax.: 01-7241-005

---

# **ANALIZA PLODNOSTI SVINJ NA KMETIJAH**

ZA PRVO POLLETJE 2019

Dokument št. 32-1/2020

**VODENJE REPRODUKCIJE NA ZAVODIH:**

Mag. Darja PREVALNIK

Mag. Marjeta ŽENKO

Mag. Andrej KASTELIC

Mag. Sašo SEVER

**OBDELAVA IN OCENA REZULTATOV:**

Prof. dr. Milena KOVAČ

Doc. dr. Špela MALOVRH

Janja URANKAR, univ. dipl. inž. zoot.

Karmen LOŽAR, dipl. inž. zoot.

Irena ULE

Meta MARUŠIČ

Stanka PAVLIN

DOMŽALE, julij 2020



**Slike**

3.1	Število živorojenih pujskov pri mladicah na kmetijah po zavodih v Sloveniji v letu 2019 . . . . .	27
3.2	Delež mrtvorjenih pujskov pri mladicah na kmetijah po zavodih v Sloveniji v letu 2019 . . . . .	27
3.3	Število živorojenih pujskov pri starih svinjah na kmetijah po zavodih v Sloveniji v letu 2019 . . . . .	28
3.4	Delež mrtvorjenih pujskov pri starih svinjah na kmetijah po zavodih v Sloveniji v letu 2019 . . . . .	28
3.5	Število živorojenih pujskov na gnezdo in starost mladic ob praritvi na kmetijah v Sloveniji v letu 2019 . . . . .	28
3.6	Število živorojenih pujskov na gnezdo in doba med praritvama na kmetijah v Sloveniji v letu 2019 . . . . .	29
3.7	Število krmnih dni na živorojenega pujska in starost mladic ob praritvi na kmetijah v Sloveniji v letu 2019 . . . . .	29
3.8	Dolžina neproduktivnih faz na gnezdo pri mladicah na kmetijah v 2019 . . . . .	29
3.9	Število krmnih dni na živorojenega pujska in doba med praritvama na kmetijah v Sloveniji v letu 2019 . . . . .	30
3.10	Porazdelitev dolžine interim obdobja na kmetijah v Sloveniji v letu 2019 v primerjavi s farmo in standardom . . . . .	30
3.11	Dolžina interim obdobja in število živorojenih pujskov pri starih svinjah na kmetijah v Sloveniji v letu 2019 . . . . .	30
3.12	Dolžina neproduktivnih faz pri starih svinjah na kmetijah v Sloveniji v 2019 . . . . .	31
3.13	Velikost gnezda na kmetijah v 2019 . . . . .	31
3.14	Delež pregonitev in doba od pripusta do pregonitve na kmetijah v Sloveniji v letu 2019 . . . . .	31
3.15	Delež izgubljenih pujskov na kmetijah po zavodih v Sloveniji v letu 2019 . . . . .	32
3.16	Porazdelitev dolžine brejosti na kmetijah v Sloveniji v letu 2019 v primerjavi s farmo in standardom . . . . .	32
3.17	Dodatni stroški neproduktivnih faz na gnezdo v EUR na kmetijah v Sloveniji v letu 2019 . . . . .	32
3.18	Število živorojenih in odstavljenih pujskov na gnezdo pri mladicah in starih svinjah na kmetijah v Sloveniji po letih . . . . .	33
3.19	Dolžina uspešnega reprodukcijskega ciklusa pri mladicah in starih svinjah na kmetijah v Sloveniji po letih . . . . .	33
3.20	Dolžina neuspešnega reprodukcijskega ciklusa na kmetijah v Sloveniji po letih . . . . .	33
3.21	Dolžina poodstavitvenega premora in interim obdobja pri privesnicah in svinjah po 2. praritvi na kmetijah v Sloveniji po letih . . . . .	34
3.22	Delež prasitev pri mladicah in starih svinjah na kmetijah v Sloveniji po letih . . . . .	34
3.23	Število krmnih dni na gnezdo pri mladicah (KD/gn - mladice) in starih svinjah (KD/gn - stare svinje) ter na živorojenega pujska pri mladicah (KD/pž - mladice) in starih svinjah (KD/pž - stare svinje) na kmetijah v Sloveniji po letih . . . . .	34

**Oznake**

DOP	doba od odbire do prasiatve
DMP	doba med prasiatvama
IO	interim obdobje
PP	podstavitveni premor
DOI	doba od odbire do izločitve
DI	doba od prasiatve do izločitve
DPI	doba od pripusta do izločitve
DPP	doba od pripusta do pregonitve
kDMP	korigirana doba med prasiatvama
kDOP	korigirana doba od odbire do prasiatve
$G_S$	število gnezd na svinjo v proizvodnem obdobju
$G_L$	število gnezd na svinjo letno
$P_{\dot{Z}}$	število živorojenih pujskov
$P_O$	število odstavljenih pujskov
KD	krmni dnevi
PF	produktivne faze
št.	število
Sk.	skupaj
gn.	gneздо
prip. (pr.)	pripust
pras.	prasiatev
Izl.	izločitev, izločenih
Usp.	uspešni
Lakt.	laktacija
Preg.	pregonitev

**Šifrant izločitev**

8	izostanek bukanja
9	nebreje-nepregonjene
10	večkratna pregonitev

## Poglavje 1

### Primerjava plodnosti na kmetijah v letu 2019

#### 1.1 Velikost gnezda

Tabela 1.1: Velikost gnezda na kmetijah

Rejec	MLADICE			STARE SVINJE						SKUPAJ		
	Št. pras.	DOP (dni)	$P_{\bar{z}}$ / gn.	Št. pras.	DMP (dni)	Lakt. (dni)	IO (dni)	PP (dni)	$P_{\bar{z}}$ / gn.	Št. pras.	$P_O$ / gn.	Izgube (%)
30023	10	189.9	10.90	29	171.2	30.1	12.7	25.4	10.21	39	8.38	19.3
30037	16	178.6	10.75	31	194.1	46.0	11.5	31.8	9.32	47	9.28	5.4
30077	22	189.7	12.50	72	165.7	31.1	6.7	17.9	11.90	94	10.86	9.8
30152	7	203.1	8.14	93	167.3	29.2	10.5	22.6	9.73	100	9.18	4.6
30504	18	160.6	12.22	89	157.0	29.5	8.2	12.3	13.83	107	11.23	17.2
30511	3	95.3	10.00	18	212.1	36.6	42.5	61.1	12.00	21	9.33	20.3
30745	9	183.9	10.44	32	176.3	33.9	15.5	26.8	11.22	41	9.93	10.2
40002	15	139.6	9.93	26	170.2	35.5	7.1	17.5	10.31	41	9.73	4.3
40005	6	103.3	10.33	44	170.8	36.3	6.2	17.9	10.86	50	9.92	8.1
40017	15	135.6	11.13	55	171.7	31.8	10.0	23.8	12.04	70	8.99	24.1
40164	10	131.6	9.10	23	158.0	33.8	7.0	9.1	13.13	33	8.58	28.0
40222	7	155.7	10.14	51	159.0	29.5	5.0	13.4	13.29	58	9.34	27.6
40267	14	133.3	10.29	29	166.6	32.6	5.3	17.9	12.83	43	8.23	31.4
40504	3	211.3	9.00	18	180.4	38.9	24.5	26.5	11.39	21	10.19	7.8
40545	1	236.0	17.00	27	182.9	34.4	32.3	33.2	11.56	28	11.21	4.6
40620	12	145.2	9.33	63	158.5	33.3	7.5	9.0	10.83	75	9.69	8.4
40649	4	151.5	9.50	21	158.2	28.5	8.0	14.6	12.57	25	10.68	11.6
40825	11	167.6	9.36	27	182.9	37.5	17.7	29.9	11.44	38	9.76	10.0
40895	8	119.8	11.75	29	156.3	26.7	6.6	13.7	12.10	37	10.41	13.5
31007	16	175.9	10.19	28	160.8	30.1	13.5	15.7	11.36	44	9.86	9.8
31025	3	242.7	12.33	20	181.5	34.4	13.0	32.1	12.60	23	10.13	19.4
31026	17	194.4	11.41	40	169.1	34.6	6.3	19.8	11.80	57	10.07	13.8
31060	6	168.7	9.00	17	173.7	28.7	14.3	30.2	11.06	23	6.91	34.3
31084	2	156.5	14.00	18	157.3	31.3	11.2	11.2	10.78	20	9.25	16.7
31301	36	174.3	11.28	129	161.1	29.0	10.9	15.8	10.64	165	9.34	13.3
31303	6	200.2	12.00	40	197.3	40.6	9.8	41.6	12.00	46	10.15	15.4
31304	4		12.75	11	161.0	30.7	7.5	14.9	11.00	15	11.07	3.5
31305	21	162.2	10.38	106	165.3	26.3	9.9	23.3	11.00	127	10.43	4.3
31306	2	159.5	12.50	7	164.1	33.6	9.1	12.9	11.00	9	7.78	31.4
31307	0			10	187.0	39.8	20.5	33.4	11.50	10	7.00	39.1
31309	26	137.1	11.85	33	156.6	33.1	6.5	7.8	12.12	59	10.63	11.4
31311	5		10.20	35	159.7	31.8	10.9	13.3	11.37	40	9.78	12.9
31312	13	161.8	8.92	47	166.0	32.4	12.0	18.5	11.51	60	9.23	15.7
31313	7		7.29	21	185.7	40.9	26.3	30.9	9.43	28	7.43	16.5
31314	7	122.3	12.71	36	166.2	36.1	8.1	14.6	13.28	43	9.79	25.7
31316	11	142.0	9.09	48	169.3	30.9	8.6	22.1	10.63	59	8.78	15.1
31353	7	141.3	9.86	35	162.4	33.7	9.3	12.4	11.20	42	9.14	16.7
31358	13	169.5	13.00	37	164.0	26.7	4.9	23.6	11.43	50	9.00	24.0
31359	5	175.4	10.40	17	162.0	32.9	7.7	14.8	13.41	22	10.27	19.3
31387	10	180.1	8.90	51	172.6	43.2	7.6	13.1	11.80	61	9.93	12.3
31388	25	141.6	9.80	37	153.7	30.0	6.4	8.1	10.19	62	9.45	5.8
31419	1		5.00	15	189.8	37.6	37.2	38.7	10.47	16	9.25	8.6

Rejec	MLADICE			STARE SVINJE						SKUPAJ		
	Št. pras.	DOP (dni)	$P_{\bar{z}}$ /gn.	Št. pras.	DMP (dni)	Lakt. (dni)	IO (dni)	PP (dni)	$P_{\bar{z}}$ /gn.	Št. pras.	$P_O$ /gn.	Izgube (%)
31620	8	133.1	11.88	24	151.6	31.0	5.3	5.3	10.88	32	9.38	15.7
31984	8	150.1	10.50	27	192.0	29.7	9.2	47.9	10.00	35	9.34	7.6
41638	24	246.5	12.08	79	167.9	27.4	6.4	25.0	11.57	103	11.04	5.6
32001	1	139.0	6.00	12	196.4	31.3	25.0	50.3	12.08	13	9.08	21.9
32003	1	183.0	13.00	8	185.0	28.4	40.9	40.9	14.50	9	12.89	10.1
32010	11	194.7	10.64	20	165.5	28.4	9.4	21.6	11.30	31	8.61	22.2
33310	12	147.3	11.25	62	163.3	33.2	9.1	13.8	11.61	74	9.92	14.2
Skupaj	499	165.1	10.75	1847	168.0	32.1	10.5	20.3	11.45	2346	9.73	13.9

## 1.2 Analiza pripustov

Tabela 1.2: Analiza pripustov mladic na kmetijah

Rejec	S K U P A J							PRVI PRIPUST				DRUGI IN VIŠJI			
	Št. prip.	Usp. prip. (%)	Izl. po prip. (%)	Preg. (%)	DPI (dni)	DPP (dni)	P <sub>z</sub> /prip.	Št. prip.	Prvi (%)	Usp. (%)	P <sub>z</sub> /prip.	Št. prip.	≥2 (%)	Usp. (%)	P <sub>z</sub> /prip.
30023	11	90.9		9.1		31.0	9.9	7	63.6	85.7	8.1	4	36.4	100.0	13.0
30037	55	76.4	7.3	16.4	43.8	23.8	8.2	41	74.6	75.6	8.1	14	25.5	78.6	8.4
30077	38	57.9	5.3	36.8	38.5	37.1	7.2	25	65.8	64.0	7.6	13	34.2	46.2	6.5
30152	9	77.8		22.2		56.0	6.3	6	66.7	83.3	6.5	3	33.3	66.7	6.0
30504	21	81.0	9.5	9.5	46.5	62.0	9.7	19	90.5	84.2	10.2	2	9.5	50.0	5.0
30511	3	100.0					10.0	3	100.0	100.0	10.0	0			
30745	16	56.3	18.8	25.0	46.7	31.0	5.9	11	68.8	45.5	3.9	5	31.3	80.0	10.2
40002	77	84.4	1.3	14.3	40.0	37.0	8.6	61	79.2	85.3	8.7	16	20.8	81.3	8.1
40005	0							0				0			
40017	14	92.9	7.1		191.0		10.2	10	71.4	90.0	9.5	4	28.6	100.0	12.0
40164	88	87.5	1.1	11.4	33.0	41.6	11.4	81	92.1	86.4	11.2	7	8.0	100.0	
40222	21	76.2	4.8	19.1	97.0	24.0	7.7	15	71.4	80.0	9.0	6	28.6	66.7	5.8
40267	75	64.0	6.7	25.3	69.8	32.2	6.6	63	84.0	66.7	7.0	12	16.0	50.0	4.9
40504	3	100.0					9.0	3	100.0	100.0	9.0	0			
40545	2	50.0	50.0		319.0		8.5	2	100.0	50.0	8.5	0			
40620	16	68.8	6.3	25.0	27.0	55.5	6.2	14	87.5	64.3	5.4	2	12.5	100.0	11.5
40649	0							0				0			
40825	28	42.9	17.9	39.3	52.6	33.5	3.9	18	64.3	38.9	4.1	10	35.7	50.0	3.6
40895	0							0				0			
31007	15	73.3	13.3	13.3	16.0	40.0	7.5	15	100.0	73.3	7.5	0			
31025	5	60.0		40.0		67.5	7.4	3	60.0	66.7	8.3	2	40.0	50.0	6.0
31026	12	100.0					11.8	9	75.0	100.0	11.9	3	25.0	100.0	11.3
31060	48	64.6	16.7	18.8	97.1	64.0	5.6	42	87.5	66.7	5.7	6	12.5	50.0	
31084	0							0				0			
31301	43	83.7	4.7	11.6	251.0	73.4	9.4	36	83.7	80.6	9.3	7	16.3	100.0	10.0
31303	10	60.0		40.0		119.3	7.2	6	60.0	100.0	12.0	4	40.0		
31304	4	100.0					12.8	4	100.0	100.0	12.8	0			
31305	30	76.7	3.3	20.0	69.0	86.0	7.8	23	76.7	78.3	7.8	7	23.3	71.4	7.7
31306	27	66.7	25.9	7.4	120.3	33.5	8.3	23	85.2	73.9	9.2	4	14.8	25.0	
31307	0							0				0			
31309	84	88.1	3.6	8.3	34.7	21.1	10.4	77	91.7	88.3	10.3	7	8.3	85.7	11.1
31311	9	44.4	11.1	44.4	47.0	34.0	4.7	5	55.6	60.0	6.6	4	44.4	25.0	2.3
31312	23	65.2	17.4	13.0	89.8	58.7	5.7	14	60.9	71.4	6.5	9	39.1	55.6	4.6
31313	7	85.7		14.3		130.0	6.1	7	100.0	85.7	6.1	0			
31314	19	73.7	15.8	10.5	48.7	35.5	9.5	18	94.7	72.2	9.9	1	5.3	100.0	7.0
31316	207	71.5	13.0	15.5	45.9	38.3	6.5	177	85.5	75.1	6.5	30	14.5	50.0	6.5
31353	7	71.4	14.3	14.3	110.0	28.0	6.3	6	85.7	66.7	5.7	1	14.3	100.0	10.0
31358	4	50.0		50.0		73.5	6.0	3	75.0	33.3	4.3	1	25.0	100.0	11.0
31359	6	83.3		16.7		25.0	8.7	5	83.3	80.0	8.4	1	16.7	100.0	10.0
31387	14	78.6		21.4		30.3	7.1	10	71.4	80.0	6.9	4	28.6	75.0	7.5
31388	1	100.0					11.0	0	0.0			1	100.0	100.0	11.0
31419	1	100.0					5.0	1	100.0	100.0	5.0	0			
31620	0							0				0			
31984	0							0				0			
41638	43	62.8	2.3	30.2	214.0	63.1	7.5	27	62.8	63.0	7.7	16	37.2	62.5	7.1
32001	5	80.0	20.0		420.0		4.8	5	100.0	80.0	4.8	0			
32003	7	85.7		14.3		22.0	11.1	6	85.7	83.3	10.8	1	14.3	100.0	
32010	37	56.8	5.4	35.1	84.5	29.5	6.1	22	59.5	54.6	5.5	15	40.5	60.0	6.6
33310	16	68.8	6.3	25.0	38.0	82.5	7.6	12	75.0	75.0	8.3	4	25.0	50.0	5.5
Skupaj	1161	73.6	7.8	17.9	75.5	44.2	7.9	935	80.5	75.8	8.1	226	19.5	64.6	7.0

Tabela 1.3: Analiza pripustov starih svinj na kmetijah

Rejec	S K U P A J							PRVI PRIPUST				DRUGI IN VIŠJI			
	Št. prip.	Usp. prip. (%)	Izl. po prip. (%)	Preg. (%)	DPI (dni)	DPP (dni)	$P_{\bar{z}}$ / prip.	Št. prip.	Prvi (%)	Usp. (%)	$P_{\bar{z}}$ / prip.	Št. prip.	$\geq 2$ (%)	Usp. (%)	$P_{\bar{z}}$ / prip.
30023	45	62.2	15.6	22.2	109.6	48.6	6.3	35	77.8	65.7	6.3	10	22.2	50.0	6.4
30037	54	63.0	5.6	31.5	55.3	35.1	5.7	33	61.1	69.7	6.1	21	38.9	52.4	5.2
30077	102	71.6	4.9	23.5	89.6	34.1	8.6	73	71.6	76.7	9.2	29	28.4	58.6	7.1
30152	131	71.0	9.2	19.9	106.7	48.2	6.9	99	75.6	75.8	7.5	32	24.4	56.3	5.1
30504	90	83.3	2.2	14.4	62.5	26.0	11.7	72	80.0	86.1	12.2	18	20.0	72.2	9.8
30511	26	69.2		30.8		89.3	8.3	21	80.8	71.4	8.3	5	19.2	60.0	8.4
30745	44	70.5	4.6	25.0	48.0	32.3	7.9	31	70.5	71.0	7.7	13	29.6	69.2	8.5
40002	36	66.7	8.3	25.0	71.3	38.4	6.8	29	80.6	69.0	7.1	7	19.4	57.1	5.7
40005	66	66.7	7.6	25.8	89.2	43.7	7.2	51	77.3	70.6	7.9	15	22.7	53.3	5.1
40017	85	68.2	15.3	16.5	101.1	39.9	8.2	62	72.9	71.0	8.3	23	27.1	60.9	7.9
40164	27	81.5	7.4	11.1	70.5	76.0	10.9	25	92.6	84.0	11.3	2	7.4	50.0	5.5
40222	70	72.9	2.9	24.3	74.0	23.7	9.5	52	74.3	67.3	8.9	18	25.7	88.9	11.2
40267	52	55.8	9.6	30.8	60.0	25.6	7.2	32	61.5	59.4	7.5	20	38.5	50.0	6.6
40504	20	90.0	5.0	5.0	71.0	25.0	10.1	18	90.0	94.4	10.6	2	10.0	50.0	6.0
40545	27	88.9		11.1		66.7	10.3	27	100.0	88.9	10.3	0			
40620	74	85.1	4.1	10.8	33.0	33.4	9.2	66	89.2	86.4	9.3	8	10.8	75.0	8.1
40649	27	81.5		18.5		54.4	10.1	22	81.5	86.4	10.8	5	18.5	60.0	7.0
40825	39	59.0	18.0	23.1	89.1	40.9	7.0	28	71.8	57.1	6.6	11	28.2	63.6	7.9
40895	33	87.9	3.0	6.1	89.0	70.0	10.6	29	87.9	89.7	10.9	4	12.1	75.0	8.5
31007	31	90.3	6.5		106.0		10.3	30	96.8	90.0	10.2	1	3.2	100.0	11.0
31025	27	74.1	11.1	14.8	125.0	94.0	9.2	19	70.4	79.0	9.9	8	29.6	62.5	7.6
31026	55	74.6	10.9	14.6	112.5	53.4	8.9	46	83.6	73.9	8.7	9	16.4	77.8	9.9
31060	30	56.7	13.3	26.7	111.3	55.8	6.3	19	63.3	63.2	7.2	11	36.7	45.5	4.7
31084	20	95.0	5.0		144.0		10.2	20	100.0	95.0	10.2	0			
31301	159	76.1	5.7	17.6	108.0	42.8	8.1	135	84.9	78.5	8.4	24	15.1	62.5	6.7
31303	54	57.4	5.6	31.5	95.3	102.7	6.8	41	75.9	58.5	6.9	13	24.1	53.9	6.5
31304	16	75.0	6.3	18.8	46.0	101.7	8.3	15	93.8	73.3	8.3	1	6.3	100.0	9.0
31305	143	73.4	5.6	21.0	115.5	42.1	8.0	110	76.9	76.4	8.4	33	23.1	63.6	6.9
31306	12	66.7	8.3	25.0	126.0	70.0	7.4	11	91.7	63.6	6.7	1	8.3	100.0	15.0
31307	15	66.7	13.3	6.7	38.5	91.0	7.7	11	73.3	72.7	7.9	4	26.7	50.0	7.0
31309	45	73.3	13.3	11.1	65.2	30.0	8.9	42	93.3	76.2	9.3	3	6.7	33.3	3.3
31311	42	83.3	7.1	9.5	57.3	32.5	9.5	37	88.1	86.5	9.5	5	11.9	60.0	9.0
31312	59	81.4	6.8	10.2	192.5	51.7	9.3	52	88.1	82.7	9.6	7	11.9	71.4	7.7
31313	28	75.0	17.9	7.1	128.4	139.5	7.1	27	96.4	74.1	6.9	1	3.6	100.0	13.0
31314	51	74.5	13.7	11.8	95.1	46.5	9.9	43	84.3	74.4	9.7	8	15.7	75.0	10.6
31316	65	72.3	13.9	12.3	62.0	41.3	7.7	51	78.5	76.5	8.1	14	21.5	57.1	6.2
31353	35	85.7	8.6	5.7	54.3	32.5	9.6	32	91.4	84.4	9.6	3	8.6	100.0	9.7
31358	48	72.9	6.3	20.8	107.7	77.9	8.6	34	70.8	88.2	10.7	14	29.2	35.7	3.3
31359	23	73.9	17.4	8.7	170.0	139.5	9.9	22	95.7	72.7	9.8	1	4.4	100.0	12.0
31387	56	87.5	5.4	5.4	66.7	46.7	10.2	50	89.3	90.0	10.5	6	10.7	66.7	7.8
31388	50	74.0	10.0	14.0	86.2	83.0	7.5	47	94.0	76.6	7.8	3	6.0	33.3	3.3
31419	22	68.2	18.2	13.6	169.3	53.7	7.1	18	81.8	77.8	7.9	4	18.2	25.0	3.5
31620	27	92.6	7.4		136.5		10.1	27	100.0	92.6	10.1	0			
31984	44	59.1	9.1	31.8	85.0	59.4	5.9	29	65.9	69.0	6.6	15	34.1	40.0	4.5
41638	127	64.6	10.2	22.8	77.9	77.7	7.4	91	71.7	73.6	8.4	36	28.4	41.7	4.9
32001	36	30.6	11.1	55.6	151.5	33.6	3.8	15	41.7	26.7	3.2	21	58.3	33.3	4.1
32003	10	70.0	10.0	20.0	134.0	20.0	10.2	8	80.0	87.5	12.8	2	20.0		
32010	31	64.5	16.1	19.4	149.0	47.0	7.3	24	77.4	58.3	7.2	7	22.6	85.7	7.6
33310	71	88.7	2.8	7.0	64.0	57.6	10.4	63	88.7	92.1	10.7	8	11.3	62.5	7.6
Skupaj	2480	73.0	8.1	18.1	97.6	50.0	8.3	1974	79.6	76.9	8.8	506	20.4	57.7	6.7



Tabela 1.4: Distribucija pregonitev na kmetijah

Rejec	MLADICE					STARE SVINJE				
	Št. preg.	DPP (dni)	do 25. dne (%)	25-40 dni (%)	po 40. dnevu (%)	Št. preg.	DPP (dni)	do 25. dne (%)	25-40 dni (%)	po 40. dnevu (%)
30023	1	31.0		100.0		10	48.6	30.0	10.0	60.0
30037	9	23.8	77.8	22.2		17	35.1	41.2	29.4	29.4
30077	14	37.1	42.9	21.4	35.7	24	34.1	66.7	4.2	29.2
30152	2	56.0			100.0	26	48.2	23.1	19.2	57.7
30504	2	62.0			100.0	13	26.0	76.9	7.7	15.4
30511	0					8	89.3	25.0		75.0
30745	4	31.0	25.0	50.0	25.0	11	32.3	54.6	9.1	36.4
40002	11	37.0	36.4	18.2	45.5	9	38.4	44.4	22.2	33.3
40005	0					17	43.7	41.2	5.9	52.9
40017	0					14	39.9	35.7	21.4	42.9
40164	10	41.6	70.0		30.0	3	76.0			100.0
40222	4	24.0	75.0	25.0		17	23.7	58.8	35.3	5.9
40267	19	32.2	52.6	26.3	21.1	16	25.6	75.0	12.5	12.5
40504	0					1	25.0	100.0		
40545	0					3	66.7	33.3		66.7
40620	4	55.5	50.0		50.0	8	33.4	75.0	12.5	12.5
40649	0					5	54.4	20.0		80.0
40825	11	33.5	81.8	9.1	9.1	9	40.9	33.3	22.2	44.4
40895	0					2	70.0			100.0
31007	2	40.0		100.0		0				
31025	2	67.5	50.0		50.0	4	94.0	25.0		75.0
31026	0					8	53.4	12.5	12.5	75.0
31060	9	64.0	33.3	11.1	55.6	8	55.8	25.0	12.5	62.5
31084	0					0				
31301	5	73.4	20.0	20.0	60.0	28	42.8	42.9	28.6	28.6
31303	4	119.3	25.0		75.0	17	102.7	5.9	5.9	88.2
31304	0					3	101.7			100.0
31305	6	86.0	16.7		83.3	30	42.1	46.7	16.7	36.7
31306	2	33.5	50.0		50.0	3	70.0		33.3	66.7
31307	0					1	91.0			100.0
31309	7	21.1	85.7	14.3		5	30.0	60.0		40.0
31311	4	34.0	50.0	25.0	25.0	4	32.5	75.0		25.0
31312	3	58.7		66.7	33.3	6	51.7	16.7	16.7	66.7
31313	1	130.0			100.0	2	139.5			100.0
31314	2	35.5	50.0		50.0	6	46.5	50.0		50.0
31316	32	38.3	37.5	25.0	37.5	8	41.3	50.0		50.0
31353	1	28.0		100.0		2	32.5		100.0	
31358	2	73.5			100.0	10	77.9		20.0	80.0
31359	1	25.0	100.0			2	139.5			100.0
31387	3	30.3	33.3	66.7		3	46.7	66.7		33.3
31388	0					7	83.0			100.0
31419	0					3	53.7	66.7		33.3
31620	0					0				
31984	0					14	59.4	21.4	7.1	71.4
41638	13	63.1			100.0	29	77.7			100.0
32001	0					20	33.6	65.0	5.0	30.0
32003	1	22.0	100.0			2	20.0	100.0		
32010	13	29.5	53.9	15.4	30.8	6	47.0	16.7	16.7	66.7
33310	4	82.5	25.0	25.0	50.0	5	57.6	40.0		60.0
Skupaj	208	44.2	42.8	18.8	38.5	449	50.0	37.9	12.5	49.7

### 1.3 Analiza reprodukcijskega ciklusa

Tabela 1.5: Starost mladic ob pravitvi in število krmnih dni na živorojenega pujska pri mladicah na kmetijah

Rejec	Št. pras.	Starost ob		do 360 dni (%)	361-420 dni (%)	≥421 dni (%)	Izl. (%)	pred prip. (%)	po prip. (%)	Starost ob izl.	kDOP (dni)	KD/ $P_{\bar{z}}$
		1.prip.	pras.									
30023	12	262.4	391.6	25.0	50.0	25.0	14.3	50.0	50.0	356.5	217.7	20.4
30037	13	270.5	394.5	7.7	76.9	15.4	35.2	84.0	16.0	321.7	235.7	20.7
30077	24	269.5	404.4	25.0	41.7	33.3	11.1		100.0	411.7	230.9	19.9
30152	2	265.5	382.0	50.0		50.0					182.0	28.0
30504	21	233.4	358.8	42.8	52.4	4.8	12.5	33.3	66.7	292.0	171.9	14.6
30511	0											
30745	9	249.1	383.9	22.2	77.8		18.2		100.0	305.0	207.2	19.8
40002	10	215.3	344.1	70.0	20.0	10.0	4.6	66.7	33.3	283.3	137.2	12.5
40005	4	203.3	326.0	100.0							126.0	13.6
40017	13	210.9	335.6	92.3	7.7		7.1		100.0	405.0	151.4	13.4
40164	6	203.7	323.5	100.0			6.8	50.0	50.0	302.2	146.2	14.9
40222	8	218.1	354.9	62.5	37.5		14.3	75.0	25.0	275.3	180.0	18.7
40267	9	212.9	345.6	77.8	22.2		8.0	14.3	85.7	281.3	142.6	12.8
40504	3	295.0	411.3		66.7	33.3					211.3	23.5
40545	1	319.0	436.0			100.0	50.0		100.0	629.0	665.0	39.1
40620	8	232.9	357.6	50.0	50.0		20.0		100.0	447.5	219.5	23.1
40649	4	235.8	350.8	75.0	25.0						150.8	15.9
40825	11	258.2	381.6	27.3	63.6	9.1	31.6	16.7	83.3	365.3	257.1	30.4
40895	9	207.7	325.6	100.0			10.0		100.0	265.0	132.8	12.0
31007	10	288.0	404.4		80.0	20.0					204.4	19.5
31025	2	226.0	400.5	50.0		50.0					200.5	17.4
31026	13	240.2	373.5	46.1	46.2	7.7					173.5	15.0
31060	7	243.3	389.6	42.8	28.6	28.6	36.4	40.0	60.0	310.8	200.5	21.3
31084	3	238.3	354.3	100.0							154.3	15.4
31301	40	240.9	367.4	55.0	30.0	15.0	37.9	76.0	24.0	362.1	268.7	23.9
31303	8	278.3	395.6		87.5	12.5	10.0	100.0		265.0	203.8	16.6
31304	0											
31305	31	204.6	345.1	77.4	12.9	9.7	6.1		100.0	299.5	151.5	14.7
31306	2	244.0	359.5	50.0	50.0		34.4	27.3	72.7	342.2	242.7	19.4
31307	0						100.0	100.0		264.7		
31309	22	218.8	339.8	90.9	9.1		11.1	76.9	23.1	227.2	158.3	13.2
31311	2	217.0	333.0	100.0			33.3		100.0	406.0	236.0	23.6
31312	17	237.1	370.4	41.1	47.1	11.8	25.0	16.7	83.3	319.3	225.4	23.9
31313	0											
31314	2	208.0	325.0	100.0			83.3	70.0	30.0	292.6	588.0	49.0
31316	9	216.2	342.8	77.8	22.2		21.3	34.3	65.7	287.2	165.9	15.7
31353	5	228.4	349.6	80.0	20.0		16.7		100.0	347.0	179.0	20.3
31358	6	234.8	349.3	83.3	16.7						149.3	12.0
31359	7	268.6	390.1		85.7	14.3					190.1	17.8
31387	10	254.9	380.1	50.0	30.0	20.0	23.1	100.0		214.0	184.3	20.7
31388	31	221.2	336.2	100.0							136.2	13.7
31419	0											
31620	10	218.0	336.0	100.0			9.1		100.0	318.0	147.8	12.4
31984	4	224.5	367.3	50.0	50.0						167.3	21.6
41638	20	306.3	441.8	5.0	10.0	85.0	4.8		100.0	561.0	259.9	21.7
32001	0										110.0	
32003	1	270.0	383.0		100.0		58.8	100.0		260.6	256.6	19.7
32010	10	250.7	391.9	10.0	80.0	10.0	24.2	62.5	37.5	315.1	220.1	21.2
33310	4	224.0	355.0	50.0	50.0		20.0	100.0		228.0	162.0	13.8
Skupaj	443	239.4	366.8	54.4	32.5	13.1	19.0	55.1	44.9	309.0	181.2	16.9

Tabela 1.6: Doba med prasiatvama in število krmnih dni na pujska na kmetijah

Rejec	Št. pras.	DMP (dni)	do 160 dni (%)	161-200 dni (%)	≥201 dni (%)	Izl. (%)	DI (dni)	kDMP (dni)	$G_L$	$P_{\bar{z}}/$ leto	KD/ $P_{\bar{z}}$
30023	31	170.2	61.3	19.4	19.4	35.4	82.6	215.5	1.69	17.5	20.8
30037	28	187.7	10.7	64.3	25.0	22.2	124.1	223.1	1.64	15.4	23.8
30077	67	163.2	73.1	20.9	6.0	19.3	91.4	185.0	1.97	24.2	15.1
30152	100	165.3	71.0	17.0	12.0	13.0	124.5	183.9	1.98	19.1	19.0
30504	91	158.6	73.6	23.1	3.3	12.5	66.7	168.1	2.17	30.1	12.1
30511	17	204.7	35.3	29.4	35.3	19.1	144.3	238.6	1.53	18.2	20.1
30745	36	174.3	47.2	38.9	13.9	16.3	43.9	182.8	2.00	22.0	16.6
40002	24	165.3	62.5	29.2	8.3	29.4	88.2	202.0	1.81	18.6	19.7
40005	56	170.3	62.5	21.4	16.1	13.9	89.9	184.7	1.98	21.4	17.1
40017	53	166.2	52.8	37.7	9.4	23.2	140.8	208.7	1.75	20.7	17.6
40164	21	157.6	85.7	9.5	4.8	25.0	137.0	203.2	1.80	22.8	16.1
40222	43	161.3	53.5	44.2	2.3	23.2	73.5	183.5	1.99	25.8	14.2
40267	27	171.1	55.6	33.3	11.1	27.0	64.3	194.9	1.87	23.1	15.8
40504	17	176.4	23.5	64.7	11.8	22.7	121.4	212.1	1.72	19.2	19.0
40545	31	185.1	16.1	54.8	29.0	15.8	184.5	220.8	1.65	19.2	19.0
40620	65	157.4	64.6	35.4		16.7	72.4	171.9	2.12	23.1	15.8
40649	24	164.5	70.8	16.7	12.5	14.3	35.0	170.3	2.14	26.0	14.0
40825	19	178.5	36.8	42.1	21.1	32.1	137.8	243.8	1.50	18.0	20.3
40895	25	155.5	88.0	4.0	8.0	13.8	117.3	174.2	2.09	25.9	14.1
31007	28	159.4	92.9		7.1	19.4	68.0	180.0	2.03	23.5	15.6
31025	19	165.9	68.4	26.3	5.3	29.6	134.1	222.4	1.64	20.3	18.0
31026	36	167.6	69.4	13.9	16.7	26.5	105.9	205.8	1.77	21.0	17.4
31060	20	169.5	75.0	5.0	20.0	16.7	135.5	196.6	1.86	20.3	18.0
31084	24	156.3	91.7	4.2	4.2	20.0	105.2	182.6	2.00	22.3	16.4
31301	122	162.3	72.1	22.1	5.7	12.1	97.2	176.7	2.07	22.3	16.4
31303	34	191.7	17.6	58.8	23.5	11.4	131.6	211.1	1.73	20.6	17.7
31304	12	174.6	66.7	16.7	16.7	35.0	132.4	251.8	1.45	15.5	23.6
31305	108	163.2	71.3	18.5	10.2	17.6	81.6	180.6	2.02	21.9	16.7
31306	8	162.0	62.5	25.0	12.5	42.9	183.0	299.3	1.22	13.6	26.9
31307	10	181.1	30.0	40.0	30.0	72.2	93.7	424.6	0.86	9.6	38.3
31309	33	156.4	87.9	12.1		27.7	68.2	186.7	1.96	23.8	15.4
31311	34	163.4	67.6	26.5	5.9	12.8	73.8	174.3	2.09	24.0	15.2
31312	48	161.5	81.3	12.5	6.3	17.0	112.1	187.0	1.95	22.4	16.3
31313	25	188.6	32.0	48.0	20.0	16.7	209.2	230.4	1.58	14.2	25.7
31314	40	163.0	70.0	22.5	7.5	28.6	92.9	200.2	1.82	23.9	15.3
31316	39	160.5	79.5	12.8	7.7	16.7	78.3	180.5	2.02	21.3	17.1
31353	34	161.3	58.8	35.3	5.9	15.0	44.8	169.2	2.16	24.1	15.1
31358	36	151.4	91.7	5.6	2.8	18.2	105.3	174.8	2.09	23.7	15.4
31359	24	158.0	87.5	8.3	4.2	11.1	189.7	181.7	2.01	27.1	13.5
31387	42	169.5	4.8	95.2		20.8	71.6	188.2	1.94	22.5	16.2
31388	32	154.4	93.8	3.1	3.1	22.7	104.4	187.0	1.95	19.8	18.4
31419	17	185.0	17.6	58.8	23.5	19.1	243.0	242.2	1.51	15.7	23.3
31620	22	154.4	86.4	13.6		29.0	133.0	208.8	1.75	21.0	17.4
31984	24	173.2	75.0	8.3	16.7	20.0	169.7	215.6	1.69	16.8	21.7
41638	81	161.5	84.0	1.2	14.8	11.2	164.2	183.8	1.99	22.8	16.1
32001	10	198.5	20.0	40.0	40.0	37.5	236.8	340.6	1.07	13.7	26.6
32003	7	188.9		71.4	28.6	36.4	68.0	227.7	1.60	23.3	15.6
32010	19	166.1	52.6	36.8	10.5	32.1	113.8	220.0	1.66	17.8	20.5
33310	54	161.6	77.8	18.5	3.7	15.6	49.6	170.8	2.14	25.1	14.6
Skupaj	1817	165.8	64.8	25.3	10.0	20.1	104.9	192.8	1.89	21.6	16.9

Tabela 1.7: Velikost gnezda ob rojstvu, gospodarnost priraje pujskov in delež letne obnove črede svinj na kmetijah

Rejec	Št. pras.	Št. izl.	$P_Z/$ gn.	KD/ gn.	$G_L$	KD/ $P_Z$	Št. svinj v čredi	Remont (%)	$G_S$
30023	43	19	10.44	216.1	1.69	20.7	25	74.6	2.26
30037	41	33	10.02	230.9	1.58	23.0	47	70.5	2.24
30077	91	19	12.11	197.1	1.85	16.3	49	38.7	4.79
30152	102	15	9.60	183.9	1.98	19.2	51	29.2	6.80
30504	112	16	13.47	168.8	2.16	12.5	52	30.9	7.00
30511	17	4	11.88	238.6	1.53	20.1	11	36.0	4.25
30745	45	9	10.89	187.7	1.94	17.2	23	38.9	5.00
40002	34	13	10.47	155.3	2.35	14.8	37	35.5	6.62
40005	60	9	10.72	180.8	2.02	16.9	30	30.3	6.67
40017	66	17	11.74	197.4	1.85	16.8	36	47.6	3.88
40164	27	13	12.04	157.9	2.31	13.1	44	29.5	7.85
40222	51	17	12.43	182.3	2.00	14.7	33	50.8	3.94
40267	36	17	12.06	155.9	2.34	12.9	45	37.5	6.24
40504	20	5	10.85	212.0	1.72	19.5	12	43.0	4.00
40545	32	7	11.81	234.7	1.56	19.9	21	34.0	4.57
40620	73	15	10.74	177.1	2.06	16.5	35	42.3	4.87
40649	28	4	11.79	167.5	2.18	14.2	13	31.1	7.00
40825	30	15	10.70	249.2	1.46	23.3	22	68.6	2.13
40895	34	5	12.06	163.3	2.24	13.5	15	32.9	6.80
31007	38	7	11.29	186.4	1.96	16.5	19	36.1	5.43
31025	21	8	12.29	220.3	1.66	17.9	13	63.1	2.62
31026	49	13	11.78	197.2	1.85	16.8	26	49.1	3.77
31060	27	24	10.52	199.0	1.83	18.9	30	80.0	2.29
31084	27	6	11.04	179.4	2.03	16.3	13	45.2	4.50
31301	162	42	10.89	199.4	1.83	18.3	89	47.5	3.86
31303	42	6	11.98	209.7	1.74	17.5	24	24.9	7.00
31304	12	7	10.67	251.8	1.45	23.6	8	84.5	1.71
31305	139	25	10.72	174.1	2.10	16.2	66	37.7	5.56
31306	10	17	11.40	258.3	1.41	22.7	21	82.8	1.71
31307	10	38	11.10	502.2	0.73	45.2	14	276.2	0.26
31309	55	26	12.07	165.1	2.21	13.7	62	42.0	5.27
31311	36	6	11.42	177.7	2.05	15.6	18	34.2	6.00
31312	65	16	10.94	197.0	1.85	18.0	35	45.6	4.06
31313	25	5	8.96	230.4	1.58	25.7	16	31.7	5.00
31314	42	26	13.07	218.6	1.67	16.7	25	103.3	1.62
31316	48	43	10.56	169.3	2.16	16.0	78	55.2	3.91
31353	39	7	10.87	170.5	2.14	15.7	18	38.4	5.57
31358	42	8	11.50	171.1	2.13	14.9	20	40.6	5.25
31359	31	3	12.87	183.6	1.99	14.3	16	19.2	10.33
31387	52	14	11.08	187.5	1.95	16.9	27	52.4	3.71
31388	63	10	10.05	162.0	2.25	16.1	28	35.8	6.30
31419	17	4	10.41	242.2	1.51	23.3	11	35.5	4.25
31620	32	10	11.97	189.8	1.92	15.9	17	60.1	3.20
31984	28	6	9.64	208.7	1.75	21.6	16	37.5	4.67
41638	101	12	11.56	198.9	1.84	17.2	55	21.8	8.42
32001	10	6	12.80	287.4	1.27	22.5	10	58.6	2.17
32003	8	14	14.38	242.1	1.51	16.8	9	150.7	1.00
32010	29	17	10.62	220.0	1.66	20.7	26	65.6	2.53
33310	58	11	11.71	170.2	2.15	14.5	27	40.7	5.27
Skupaj	2260	689	11.29	188.8	1.93	16.7	1438	47.9	4.03

Tabela 1.8: Dolžina laktacije in starostna struktura na kmetijah

Rejec	DOLŽINA LAKTACIJE							P R A S I T V E		
	Lakt. (dni)	do 14 dni (%)	15-19 dni (%)	20-24 dni (%)	25-29 dni (%)	30-34 dni (%)	≥35 dni (%)	prva (%)	2.-7. (%)	≥8 (%)
30023	30.1	8.3	2.1	4.2	22.9	45.8	16.7	22.6	62.9	14.5
30037	48.3					11.1	88.9	66.4	25.2	8.4
30077	31.1	1.2		1.2	28.9	62.7	6.0	24.5	68.2	7.3
30152	29.9	4.3	0.9	6.1	37.4	42.6	8.7	1.7	71.8	26.5
30504	29.7			5.8	47.1	27.9	19.2	18.8	71.8	9.4
30511	37.1				19.0	9.5	71.4		95.2	4.8
30745	32.7	9.3	2.3	2.3	14.0	41.9	30.2	20.4	72.2	7.4
40002	35.2	11.8			5.9	32.4	50.0	65.7	27.2	7.1
40005	35.9	1.5	4.6		6.2	40.0	47.7	5.8	73.9	20.3
40017	31.6	1.4		1.4	24.6	50.7	21.7	16.9	78.3	4.8
40164	34.0		3.6	3.6		50.0	42.9	75.9	21.5	2.6
40222	29.9	3.6		10.7	57.1	12.5	16.1	33.3	57.2	9.5
40267	32.0	8.1	5.4		21.6	35.1	29.7	70.4	26.4	3.2
40504	39.1	4.5				18.2	77.3	12.0	76.0	12.0
40545	34.5		2.6		2.6	34.2	60.5	5.0	82.5	12.5
40620	33.3		1.3	9.0	28.2	17.9	43.6	11.4	73.8	14.8
40649	27.8		3.6	10.7	53.6	25.0	7.1	12.5	40.6	46.9
40825	38.6	3.6				14.3	82.1	40.4	55.3	4.3
40895	27.2			3.4	86.2	10.3		25.6	71.8	2.6
31007	33.0				11.1	77.8	11.1	21.7	47.9	30.4
31025	34.8	3.7		3.7		29.6	63.0	6.9	79.3	13.8
31026	35.1	4.1			6.1	46.9	42.9	21.0	66.1	12.9
31060	28.3	16.7			8.3	33.3	41.7	69.6	26.6	3.8
31084	31.4					96.7	3.3	9.1	57.6	33.3
31301	29.7	6.4		7.1	22.1	49.3	15.0	32.0	45.7	22.3
31303	40.4					13.6	86.4	18.5	72.2	9.3
31304	31.2	10.0	5.0		15.0	65.0	5.0		90.0	10.0
31305	26.4			30.5	63.4	3.1	3.1	20.1	37.8	42.1
31306	32.6				7.1	42.9	50.0	69.6	23.9	6.5
31307	37.8	19.4		2.8	2.8	11.1	63.9	25.0	75.0	
31309	32.2	4.3	2.1		2.1	68.1	23.4	71.3	24.4	4.3
31311	30.7	2.6		5.1	30.8	38.5	23.1	7.1	83.4	9.5
31312	32.7	5.1			10.2	59.3	25.4	28.9	56.6	14.5
31313	39.6	3.3			10.0	16.7	70.0		80.0	20.0
31314	35.9	3.6			8.9	37.5	50.0	17.6	75.0	7.4
31316	30.8	2.1			33.3	50.0	14.6	77.4	21.2	1.4
31353	32.6			2.5	35.0	22.5	40.0	13.0	65.3	21.7
31358	26.8		2.3	20.5	68.2	6.8	2.3	12.0	66.0	22.0
31359	31.9				37.0	37.0	25.9	20.6	52.9	26.5
31387	43.8					1.9	98.1	19.7	72.7	7.6
31388	30.3				36.4	43.2	20.5	41.3	54.7	4.0
31419	36.9		4.8		4.8	14.3	76.2		95.2	4.8
31620	31.1	3.2				93.5	3.2	26.2	54.8	19.0
31984	29.8	3.3		3.3	40.0	30.0	23.3	11.8	61.7	26.5
41638	27.3				95.9	4.1		17.6	58.9	23.5
32001	31.3			6.3		93.8		15.8	78.9	5.3
32003	28.0	18.2		9.1	18.2	45.5	9.1	60.7	39.3	
32010	28.4	7.1		10.7	50.0	21.4	10.7	54.1	42.6	3.3
33310	33.7	3.1				67.2	29.7	7.2	75.4	17.4
Skupaj	32.1	3.0	0.7	4.6	27.3	35.4	29.0	34.2	52.8	13.0

Tabela 1.9: Interim obdobje na kmetijah

Rejec	PRVESNICE				STARE SVINJE			
	IO (dni)	do 12 dni (%)	12-40 dni (%)	≥41 dni (%)	IO (dni)	do 12 dni (%)	12-40 dni (%)	≥41 dni (%)
30023	22.7	52.9	17.6	29.4	6.4	89.3	10.7	
30037	17.3	50.0	25.0	25.0	10.3	84.8	13.0	2.2
30077	12.4	62.5	37.5		7.1	90.4	9.6	
30152	23.6	55.0	30.0	15.0	7.8	89.2	8.1	2.7
30504	13.9	66.7	30.3	3.0	5.8	94.7	5.3	
30511	42.4	72.7		27.3	44.9	40.0	13.3	46.7
30745	26.7	30.0	40.0	30.0	11.4	76.5	20.6	2.9
40002	5.0	100.0			6.7	94.1	2.9	2.9
40005	6.5	95.8	4.2		6.1	95.2	4.8	
40017	10.8	83.3	11.1	5.6	9.4	83.6	13.4	3.0
40164	9.7	85.7	14.3		8.7	90.0		10.0
40222	5.8	95.7	4.3		5.8	97.9		2.1
40267	5.1	100.0			5.5	93.3	6.7	
40504					25.9	30.0	45.0	25.0
40545	34.3	33.3	33.3	33.3	29.7	14.3	52.4	33.3
40620	12.5	63.6	36.4		6.7	90.5	9.5	
40649	14.0	66.7	33.3		8.2	79.2	20.8	
40825	36.8	58.3		41.7	12.4	77.8	14.8	7.4
40895	5.5	100.0			6.6	96.3		3.7
31007	6.2	100.0			14.0	84.6	7.7	7.7
31025	27.4	80.0		20.0	8.4	90.9	4.5	4.5
31026	7.0	85.7	14.3		8.2	89.6	10.4	
31060	23.3	33.3	33.3	33.3	10.3	81.5	14.8	3.7
31084	32.0	66.7		33.3	7.1	94.1	5.9	
31301	10.9	76.2	23.8		16.0	74.6	18.1	7.2
31303	11.0	80.0	20.0		7.5	81.6	18.4	
31304					7.5	81.3	18.8	
31305	22.3	66.7	6.7	26.7	8.5	87.6	8.8	3.5
31306	21.7	33.3	66.7		5.4	100.0		
31307	35.2	60.0		40.0	7.4	80.0	20.0	
31309	6.0	100.0			6.4	97.7	2.3	
31311	17.1	66.7	26.7	6.7	6.2	100.0		
31312	13.3	84.2	5.3	10.5	11.6	90.0	2.5	7.5
31313	46.5	25.0		75.0	39.4	54.2	16.7	29.2
31314	5.4	100.0			9.0	91.7		8.3
31316	14.0	64.7	29.4	5.9	6.4	95.8	2.1	2.1
31353	14.6	66.7	33.3		8.8	88.5	7.7	3.8
31358	4.9	100.0			4.9	100.0		
31359					7.4	91.3	4.3	4.3
31387	14.4	50.0	50.0		6.3	93.8	6.3	
31388	5.4	100.0			10.3	85.7		14.3
31419	52.0		45.5	54.5	19.9	18.2	81.8	
31620	5.3	90.9	9.1		10.7	75.0	25.0	
31984	10.5	93.8		6.3	5.9	96.4	3.6	
41638	9.5	92.3		7.7	10.9	93.0	1.8	5.3
32001	24.8	37.5	50.0	12.5	24.6	32.1	60.7	7.1
32003	73.0			100.0	48.7	11.1	33.3	55.6
32010	8.5	92.3	7.7		9.9	83.3	16.7	
33310	21.1	50.0	30.0	20.0	7.9	93.4	4.9	1.6
Skupaj	15.8	73.7	15.4	10.9	10.2	85.2	10.6	4.2

Tabela 1.10: Poodstavitveni premor na kmetijah

Rejec	PRVESNICE					STARE SVINJE				
	Št. svinj	PP (dni)	do 12 dni (%)	13-60 dni (%)	≥61 dni (%)	Št. svinj	PP (dni)	do 12 dni (%)	13-60 dni (%)	≥61 dni (%)
30023	17	38.6	35.3	41.2	23.5	28	14.1	71.5	21.4	7.1
30037	8	66.4	25.0	25.0	50.0	46	31.8	56.6	21.7	21.7
30077	8	34.3	50.0	25.0	25.0	94	21.2	68.1	20.2	11.7
30152	20	47.9	50.0	20.0	30.0	111	25.9	67.6	19.8	12.6
30504	33	30.2	36.4	54.5	9.1	57	8.0	86.0	14.0	
30511	11	62.0	63.6	9.1	27.3	15	59.1	33.4	13.3	53.3
30745	10	42.3	10.0	80.0	10.0	34	21.5	58.8	32.4	8.8
40002	2	77.0	50.0		50.0	34	21.1	76.5	14.7	8.8
40005	24	22.2	66.7	20.8	12.5	42	19.3	76.2	14.3	9.5
40017	18	31.2	66.6	16.7	16.7	67	26.6	55.3	31.3	13.4
40164	7	16.6	71.4	28.6		20	12.0	90.0	5.0	5.0
40222	23	12.6	73.9	26.1		47	12.2	70.2	29.8	
40267	7	21.1	57.1	28.6	14.3	45	17.4	60.0	35.6	4.4
40504	0					20	37.9	30.0	55.0	15.0
40545	6	34.3	33.3	50.0	16.7	21	29.7	14.3	76.2	9.5
40620	11	14.3	63.6	36.4		63	9.9	82.5	15.9	1.6
40649	3	14.0	66.7	33.3		24	17.7	66.7	25.0	8.3
40825	12	84.4	41.6	16.7	41.7	27	26.2	63.0	22.2	14.8
40895	6	28.7	66.7		33.3	27	11.7	88.9	3.7	7.4
31007	5	6.2	100.0			26	16.4	80.8	7.7	11.5
31025	5	52.4	40.0	20.0	40.0	22	47.0	68.2	9.1	22.7
31026	7	22.6	71.4	14.3	14.3	48	19.0	75.0	16.7	8.3
31060	3	102.7			100.0	27	26.0	55.6	25.9	18.5
31084	3	32.0	66.7		33.3	17	7.1	94.1	5.9	
31301	21	15.7	61.9	38.1		138	26.8	67.4	21.0	11.6
31303	5	59.4	40.0	20.0	40.0	49	34.4	63.3	16.3	20.4
31304	0					16	12.6	74.9	18.8	6.3
31305	30	47.0	46.7	10.0	43.3	113	19.0	70.8	22.1	7.1
31306	3	30.3	33.3	66.7		9	5.4	100.0		
31307	10	54.0	20.0	30.0	50.0	5	7.4	80.0	20.0	
31309	2	6.0	100.0			43	8.4	90.7	9.3	
31311	15	17.1	66.6	26.7	6.7	27	13.7	81.5	14.8	3.7
31312	19	22.0	68.4	21.1	10.5	40	24.4	85.0	7.5	7.5
31313	4	70.5		25.0	75.0	24	39.4	54.2	33.3	12.5
31314	15	12.0	86.6	6.7	6.7	36	17.0	77.8	11.1	11.1
31316	17	27.7	47.0	41.2	11.8	48	24.4	79.1	4.2	16.7
31353	9	18.8	66.7	22.2	11.1	26	11.3	80.8	19.2	
31358	7	87.6	42.8	28.6	28.6	41	43.3	75.6	2.4	22.0
31359	0					23	12.6	87.0	8.7	4.3
31387	8	14.4	50.0	50.0		48	14.0	83.3	10.4	6.3
31388	43	10.8	93.0		7.0	7	10.3	85.7	14.3	
31419	11	64.5		54.5	45.5	11	48.5	18.2	63.6	18.2
31620	11	5.3	90.9	9.1		16	10.7	75.0	25.0	
31984	16	84.4	49.9	6.3	43.8	28	29.4	67.9	10.7	21.4
41638	13	19.2	84.6		15.4	114	46.6	69.3	2.6	28.1
32001	8	51.3	12.5	50.0	37.5	28	59.4	14.3	46.4	39.3
32003	1	73.0			100.0	9	55.6	11.2	44.4	44.4
32010	13	21.5	69.2	23.1	7.7	18	19.3	61.1	38.9	
33310	10	40.1	50.0	20.0	30.0	61	23.2	86.8	6.6	6.6
Skupaj	540	33.2	56.6	24.3	19.1	1940	24.0	69.9	18.6	11.5

## 1.4 Analiza izločitev

Tabela 1.11: Izločitve svinj na kmetijah

Rejec	MLADICE							STARE SVINJE					
	Št. izl.	DOI (dni)	Izločitve		Vzrok izločitve			Št. izl.	DI (dni)	Izločitve		Vzrok izločitve	
			pred	po pr.	8	9	10			pred	po pr.	9	10
30023	0							6	76.2	50.0	50.0	16.7	16.7
30037	19	108.7	84.2	15.8	73.7	10.5	5.3	10	146.5	50.0	50.0	20.0	20.0
30077	3	91.0	66.7	33.3	66.7	0.0	33.3	10	100.1	60.0	40.0	10.0	30.0
30152	0							15	168.1	20.0	80.0	20.0	40.0
30504	4	92.3	25.0	75.0	25.0	50.0	0.0	13	52.7	69.2	30.8	15.4	7.7
30511	0							5	120.2	80.0	20.0	0.0	0.0
40002	3	94.0	100.0		100.0	0.0	0.0	10	102.1	50.0	50.0	10.0	30.0
40005	0							8	119.9	50.0	50.0	12.5	12.5
40017	1	205.0		100.0	0.0	0.0	0.0	16	158.4	37.5	62.5	43.8	6.3
40164	4	89.8	50.0	50.0	50.0	0.0	0.0	6	113.8	66.7	33.3	16.7	0.0
40222	2	84.0	50.0	50.0	50.0	0.0	0.0	10	86.5	70.0	30.0	10.0	20.0
40267	5	71.2	20.0	80.0	20.0	0.0	60.0	5	102.6		100.0	20.0	0.0
40504	0							2	81.5	100.0		0.0	0.0
40545	0							7	207.7	57.1	42.9	42.9	0.0
40620	1	35.0	100.0		0.0	0.0	0.0	11	69.4	90.9	9.1	0.0	0.0
40649	0							3	38.0	100.0		0.0	0.0
40825	5	129.6	20.0	80.0	20.0	20.0	40.0	13	131.6	38.5	61.5	38.5	7.7
40895	0							2	77.5	50.0	50.0	0.0	0.0
31007	2	58.0		100.0	0.0	0.0	0.0	12	57.5	75.0	25.0	8.3	0.0
31025	0							7	155.4	71.4	28.6	14.3	14.3
31026	1	235.0		100.0	0.0	100.0	0.0	10	124.5	50.0	50.0	30.0	0.0
31060	12	95.9	33.3	66.7	0.0	58.3	0.0	7	203.1	57.1	42.9	14.3	14.3
31084	0							5	106.4	80.0	20.0	20.0	0.0
31301	19	143.0	63.2	36.8	63.2	26.3	0.0	19	139.0	42.1	57.9	10.5	10.5
31303	0							3	264.3	33.3	66.7	66.7	0.0
31304	0							6	176.2	66.7	33.3	0.0	0.0
31305	1	59.0		100.0	0.0	0.0	0.0	21	95.0	61.9	38.1	14.3	4.8
31306	4	217.8	50.0	50.0	50.0	0.0	50.0	3	172.0	66.7	33.3	0.0	0.0
31307	12	182.9	75.0	25.0	83.3	0.0	0.0	25	115.4	76.0	24.0	12.0	0.0
31309	5	20.4	100.0		20.0	0.0	0.0	10	80.5	40.0	60.0	0.0	30.0
31311	1	206.0		100.0	0.0	0.0	100.0	1	127.0		100.0	0.0	0.0
31312	9	176.0	11.1	88.9	11.1	77.8	0.0	13	79.1	69.2	30.8	15.4	0.0
31313	2	644.0		100.0	0.0	50.0	50.0	13	256.5	46.2	53.8	23.1	0.0
31314	6	124.3	66.7	33.3	66.7	16.7	0.0	13	95.9	46.2	53.8	23.1	15.4
31316	23	100.0	13.0	87.0	13.0	65.2	13.0	9	76.7	55.6	44.4	11.1	22.2
31353	3	53.7	66.7	33.3	0.0	33.3	0.0	5	57.0	60.0	40.0	40.0	0.0
31358	0							5	126.0	60.0	40.0	0.0	20.0
31359	0							3	189.7		100.0	100.0	0.0
31387	8	12.5	100.0		0.0	0.0	0.0	5	73.6	80.0	20.0	0.0	0.0
31388	0							0					
31419	0							5	279.8	20.0	80.0	60.0	20.0
31620	1	118.0		100.0	0.0	100.0	0.0	10	121.0	70.0	30.0	30.0	0.0
31984	0							7	107.6	42.9	57.1	14.3	14.3
41638	0							11	201.4	45.5	54.5	27.3	27.3
32001	1	86.0	100.0		0.0	0.0	0.0	6	260.2		100.0	16.7	50.0
32003	8	58.9	100.0		25.0	0.0	0.0	2	164.0	50.0	50.0	0.0	50.0
32010	5	159.6	40.0	60.0	0.0	20.0	0.0	13	131.9	46.2	53.8	15.4	7.7
33310	1	70.0	100.0		100.0	0.0	0.0	6	51.0	83.3	16.7	0.0	0.0
Skupaj	171	117.7	52.6	47.4	35.7	26.3	8.2	407	125.6	54.8	45.2	17.9	10.8



## Poglavje 2

### Kmetije skupaj po letih

#### 2.1 Velikost gnezda

Tabela 2.1: Velikost gnezda po letih na kmetijah

Leto	MLADICE			STARE SVINJE						SKUPAJ		
	Št. pras.	DOP (dni)	$P_{\bar{z}}$ /gn.	Št. pras.	DMP (dni)	Lakt. (dni)	IO (dni)	PP (dni)	$P_{\bar{z}}$ /gn.	Št. pras.	$P_O$ /gn.	Izgube (%)
1984	87	188.8	9.21	535	162.0	30.7	12.9	17.5	10.08	622	8.55	14.1
1985	66	152.2	8.98	595	160.8	30.5	11.0	14.9	10.12	661	8.52	14.9
1986	176	175.1	9.00	653	162.4	29.5	14.9	18.3	9.83	829	8.42	12.8
1987	146	174.1	8.44	682	164.1	30.4	15.5	19.2	9.97	828	8.14	16.0
1988	184	152.8	8.77	555	162.6	32.1	11.4	16.0	10.30	739	8.34	15.9
1989	182	164.7	8.66	630	164.2	31.9	14.2	17.3	10.33	812	8.69	12.7
1990	167	166.7	9.05	792	169.2	34.7	15.4	18.9	10.15	959	8.69	12.8
1991	170	167.2	8.89	739	169.2	35.5	15.1	18.8	10.23	909	8.67	13.1
1992	157	175.2	8.83	768	170.4	36.0	14.8	18.7	10.11	925	8.72	11.8
1993	254	178.5	8.88	685	173.6	36.7	16.4	21.8	10.26	939	8.87	10.3
1994	349	168.9	9.01	1023	171.7	35.5	15.0	21.0	10.39	1372	8.91	11.2
1995	608	167.5	8.84	2038	169.4	35.5	14.2	18.6	10.56	2646	8.99	11.6
1996	588	163.7	9.01	1801	169.2	35.1	12.7	18.9	10.51	2389	9.03	10.9
1997	545	164.3	9.01	2220	170.6	34.7	14.1	20.7	10.41	2765	9.11	10.1
1998	932	156.0	9.20	2650	168.6	34.6	12.0	18.9	10.49	3582	9.06	10.7
1999	779	169.9	9.11	2913	169.3	33.8	12.5	20.3	10.41	3692	9.11	10.1
2000	747	161.7	9.12	2994	168.4	32.7	12.3	20.3	10.46	3741	9.24	9.4
2001	891	165.1	8.88	2895	166.9	31.7	12.0	19.9	10.28	3786	8.92	10.4
2002	920	165.5	9.08	3191	166.3	31.4	11.8	19.6	10.40	4111	9.05	10.5
2003	1010	170.5	9.21	3570	168.2	31.5	12.6	21.4	10.33	4580	8.98	10.9
2004	1065	173.0	9.05	3946	171.8	32.7	13.3	24.0	10.22	5011	8.76	12.2
2005	1060	184.8	9.16	4090	171.8	33.1	13.2	23.4	10.45	5150	8.95	12.1
2006	1054	175.9	9.23	4126	169.9	32.9	12.7	21.8	10.42	5180	8.95	12.1
2007	1054	172.5	9.31	4189	169.5	32.6	12.4	21.4	10.50	5243	9.01	12.2
2008	943	174.5	9.62	4126	170.3	32.7	12.1	22.1	10.56	5069	9.10	12.4
2009	956	170.8	9.29	4187	169.4	32.8	11.7	20.9	10.51	5143	9.01	12.4
2010	960	174.4	9.48	3674	169.1	32.1	11.4	21.4	10.61	4634	9.10	12.4
2011	1074	174.0	9.83	3786	170.1	32.3	11.8	21.8	10.75	4860	9.28	12.0
2012	1002	169.1	10.20	4040	165.8	31.0	10.6	19.3	11.26	5042	9.66	12.6
2013	1117	165.4	10.37	4127	164.8	31.1	9.5	18.1	11.19	5244	9.61	12.7
2014	1056	164.1	10.59	4210	165.3	31.4	9.7	18.3	11.25	5266	9.78	12.1
2015	789	168.6	10.23	4000	166.8	31.7	9.8	18.9	11.17	4789	9.58	13.0
2016	951	169.2	10.76	3853	164.6	31.1	9.7	18.0	11.55	4804	9.79	14.1
2017	889	170.2	10.88	3684	165.8	31.3	9.6	18.9	11.41	4573	9.71	14.2
2018	874	166.2	10.79	3881	166.8	31.3	9.3	19.8	11.50	4755	9.76	14.2
2019	499	165.1	10.75	1847	168.0	32.1	10.5	20.3	11.45	2346	9.73	13.9

## 2.2 Analiza pripustov

Tabela 2.2: Analiza pripustov mladic po letih kmetijah

Leto	S K U P A J							PRVI PRIPUST				DRUGI IN VIŠJI			
	Št. prip.	Usp. prip. (%)	Izl. po prip. (%)	Preg. (%)	DPI (dni)	DPP (dni)	$P_{\bar{z}}$ / prip.	Št. prip.	Prvi (%)	Usp. (%)	$P_{\bar{z}}$ / prip.	Št. prip.	$\geq 2$ (%)	Usp. (%)	$P_{\bar{z}}$ / prip.
1984	100	87.0		12.0		60.3	8.0	90	90.0	90.0	8.3	10	10.0	60.0	5.3
1985	74	86.5	2.7	9.5	77.0	79.1	7.7	67	90.5	86.6	7.7	7	9.5	85.7	8.0
1986	204	87.3	3.4	9.3	92.1	39.0	7.9	176	86.3	86.4	7.8	28	13.7	92.9	8.6
1987	167	88.6	5.4	5.4	72.6	52.4	7.4	158	94.6	88.6	7.4	9	5.4	88.9	7.2
1988	217	84.3	4.2	10.6	68.4	41.1	7.4	192	88.5	87.5	7.7	25	11.5	60.0	5.1
1989	219	84.9	3.2	11.9	96.7	55.9	7.3	186	84.9	86.6	7.5	33	15.1	75.8	6.7
1990	192	85.9	2.1	11.5	83.0	34.9	7.8	171	89.1	88.9	8.0	21	10.9	61.9	6.1
1991	194	89.2	2.1	8.8	62.0	38.7	7.9	176	90.7	90.3	7.9	18	9.3	77.8	7.8
1992	170	91.2	0.6	8.2	100.0	27.9	8.1	151	88.8	92.1	8.1	19	11.2	84.2	8.0
1993	281	91.1	2.1	6.4	203.8	61.8	8.1	264	93.9	93.2	8.3	17	6.1	58.8	5.8
1994	741	90.3	1.5	6.9	123.3	44.9	8.1	691	93.3	91.2	8.2	50	6.7	109.8	7.1
1995	2067	88.7	2.9	8.1	79.1	38.0	7.7	1916	92.7	89.4	7.6	151	7.3	80.8	7.8
1996	3384	79.5	6.3	14.0	57.2	34.4	6.8	2916	86.2	80.6	6.8	468	13.8	72.4	6.7
1997	3810	80.6	6.6	12.7	56.6	30.9	7.3	3322	87.2	82.0	7.4	488	12.8	71.5	6.7
1998	4605	80.4	7.3	12.1	73.7	35.9	7.4	4072	88.4	81.4	7.4	533	11.6	73.0	7.2
1999	3143	77.5	10.6	11.5	78.7	38.1	7.1	2757	87.7	79.3	7.3	386	12.3	65.5	5.9
2000	3003	72.1	10.8	16.9	68.3	37.6	6.5	2479	82.6	75.2	6.7	524	17.4	57.3	5.6
2001	3094	72.9	10.5	16.4	72.9	39.1	6.5	2584	83.5	74.2	6.4	510	16.5	66.1	6.4
2002	2904	67.2	10.7	16.8	72.4	42.4	6.1	2419	83.3	68.4	6.1	485	16.7	61.4	6.0
2003	3208	68.8	10.9	18.7	88.5	40.9	6.4	2601	81.1	71.3	6.5	607	18.9	58.2	5.7
2004	3009	70.0	9.1	19.9	77.6	42.6	6.3	2410	80.1	72.4	6.4	599	19.9	60.4	5.7
2005	3033	71.6	9.2	18.7	91.4	39.9	6.6	2446	80.6	73.8	6.8	587	19.4	62.5	5.8
2006	3163	76.6	8.4	14.4	83.0	42.5	7.1	2709	85.6	78.9	7.3	454	14.4	63.2	6.0
2007	2804	75.8	8.3	15.3	79.7	47.3	7.1	2361	84.2	77.7	7.1	443	15.8	65.7	6.4
2008	2613	76.6	7.9	15.2	75.3	44.0	7.4	2189	83.8	78.7	7.6	424	16.2	66.3	6.5
2009	2615	75.3	8.4	15.7	83.5	46.3	7.0	2185	83.6	78.8	7.3	430	16.4	57.4	5.3
2010	2629	70.7	9.9	18.3	79.3	46.6	6.7	2181	83.0	74.2	6.9	448	17.0	53.3	5.4
2011	2278	72.4	9.7	16.9	81.2	46.0	7.2	1860	81.7	74.9	7.3	418	18.3	61.5	6.4
2012	2333	70.3	10.7	18.3	77.2	40.5	7.2	1901	81.5	72.8	7.4	432	18.5	59.3	6.3
2013	2605	72.7	10.8	16.1	72.6	43.5	7.6	2183	83.8	75.0	7.8	422	16.2	60.4	6.6
2014	2447	75.4	8.9	15.2	78.2	38.5	8.0	2045	83.6	77.6	8.2	402	16.4	63.9	6.9
2015	2190	70.7	10.1	18.9	88.3	42.8	7.2	1817	83.0	72.2	7.3	373	17.0	63.3	6.7
2016	2188	71.8	9.6	18.4	91.2	44.6	7.8	1755	80.2	74.5	8.0	433	19.8	60.7	6.8
2017	2161	70.9	10.3	18.2	80.4	44.5	7.8	1771	82.0	72.6	7.9	390	18.1	63.6	7.1
2018	2182	71.2	8.9	19.3	89.9	43.5	7.8	1767	81.0	73.7	7.9	415	19.0	60.5	7.1
2019	1161	73.6	7.8	17.9	75.5	44.2	7.9	935	80.5	75.8	8.1	226	19.5	64.6	7.0

Tabela 2.3: Analiza pripustov starih svinj po letih na kmetijah

Leto	S K U P A J							PRVI PRIPUST				DRUGI IN VIŠJI			
	Št. prip.	Usp. prip. (%)	Izl. po prip. (%)	Preg. (%)	DPI (dni)	DPP (dni)	$P_{\bar{z}}/$ prip.	Št. prip.	Prvi (%)	Usp. (%)	$P_{\bar{z}}/$ prip.	Št. prip.	$\geq 2$ (%)	Usp. (%)	$P_{\bar{z}}/$ prip.
1984	632	85.1	3.3	11.1	77.2	38.1	8.6	556	88.0	87.2	8.9	76	12.0	75.0	7.3
1985	679	87.3	3.1	8.5	55.0	36.5	8.8	602	88.7	89.9	9.1	77	11.3	68.8	7.0
1986	723	90.0	2.2	7.5	60.8	35.3	8.8	639	88.4	90.0	8.8	84	11.6	90.5	9.1
1987	806	86.2	4.2	8.9	78.7	33.5	8.6	718	89.1	88.0	8.8	88	10.9	71.6	7.3
1988	678	80.5	5.7	12.8	54.8	32.4	8.3	585	86.3	83.3	8.6	93	13.7	63.4	6.5
1989	755	83.4	5.7	10.2	66.2	32.0	8.7	672	89.0	86.5	9.0	83	11.0	59.0	6.0
1990	914	85.9	3.5	9.9	66.4	33.5	8.7	819	89.6	89.0	9.0	95	10.4	59.0	5.9
1991	861	86.1	4.5	8.8	73.5	38.4	8.8	773	89.8	88.4	9.1	88	10.2	65.9	6.6
1992	941	83.0	4.9	11.3	73.5	39.4	8.4	832	88.4	85.7	8.7	109	11.6	62.4	6.0
1993	861	79.4	6.3	14.2	81.4	42.3	8.2	737	85.6	81.9	8.4	124	14.4	64.5	6.4
1994	1379	80.9	4.6	13.9	80.7	43.3	8.5	1169	84.8	84.3	8.9	210	15.2	61.9	6.4
1995	1812	81.6	6.0	12.0	84.4	46.2	8.6	1602	88.4	83.3	8.7	210	11.6	68.8	7.2
1996	2310	77.8	7.1	14.4	89.4	43.1	8.2	1976	85.5	80.3	8.4	334	14.5	62.9	6.7
1997	2892	77.5	6.5	15.6	91.0	43.8	8.1	2457	85.0	79.5	8.3	435	15.0	66.0	7.0
1998	3538	74.8	7.3	17.2	93.1	44.8	7.9	2949	83.4	78.3	8.2	589	16.6	57.9	6.1
1999	4095	71.1	10.1	17.7	98.9	44.9	7.4	3339	81.5	74.8	7.8	756	18.5	55.2	5.7
2000	4131	72.4	7.5	19.2	87.8	42.8	7.6	3301	79.9	75.5	7.9	830	20.1	60.1	6.3
2001	4089	70.3	9.5	19.7	84.4	44.0	7.2	3308	80.9	73.2	7.6	781	19.1	58.0	5.8
2002	4357	73.3	8.4	17.8	89.3	43.0	7.6	3553	81.5	76.3	8.0	804	18.5	60.1	6.2
2003	5178	69.0	9.1	21.0	109.1	47.6	7.1	4138	79.9	72.8	7.5	1040	20.1	53.5	5.5
2004	5820	67.3	9.3	22.3	104.5	48.9	6.9	4509	77.5	71.5	7.3	1311	22.5	52.7	5.4
2005	5729	71.3	8.1	19.9	94.8	49.6	7.5	4547	79.4	75.3	7.9	1182	20.6	56.3	5.9
2006	5641	73.0	8.4	17.7	106.5	48.7	7.6	4579	81.2	75.9	7.9	1062	18.8	60.5	6.3
2007	5765	72.4	8.0	18.6	109.4	52.4	7.6	4705	81.6	76.2	8.0	1060	18.4	55.7	5.8
2008	5851	70.3	9.1	19.6	100.7	57.8	7.4	4704	80.4	74.5	7.9	1147	19.6	53.0	5.6
2009	5723	73.3	7.6	18.1	107.0	58.8	7.7	4670	81.6	77.6	8.2	1053	18.4	54.3	5.6
2010	5173	71.1	8.6	19.0	99.7	54.1	7.5	4162	80.5	75.3	8.0	1011	19.5	54.1	5.8
2011	5396	69.9	10.1	19.1	98.6	52.5	7.5	4305	79.8	73.8	7.9	1091	20.2	55.0	5.9
2012	5372	75.0	7.2	17.2	92.0	52.2	8.4	4444	82.7	78.3	8.8	928	17.3	59.3	6.7
2013	5617	73.4	8.8	17.2	98.2	51.7	8.2	4652	82.8	76.2	8.5	965	17.2	59.6	6.7
2014	5724	73.5	8.6	17.0	97.2	48.7	8.3	4759	83.1	75.7	8.5	965	16.9	62.9	7.0
2015	5523	72.1	8.8	18.5	112.7	53.9	8.1	4480	81.1	75.4	8.4	1043	18.9	58.1	6.5
2016	5330	72.5	7.8	19.2	101.5	48.0	8.4	4304	80.8	76.7	8.9	1026	19.3	54.7	6.2
2017	5234	70.8	7.7	20.5	110.0	51.1	8.1	4192	80.1	74.8	8.6	1042	19.9	54.8	6.2
2018	5383	72.0	8.2	18.8	100.5	54.1	8.3	4322	80.3	75.9	8.8	1061	19.7	56.2	6.3
2019	2480	73.0	8.1	18.1	97.6	50.0	8.3	1974	79.6	76.9	8.8	506	20.4	57.7	6.7

Tabela 2.4: Distribucija pregonitev po letih na kmetijah

Leto	MLADICE					STARE SVINJE				
	Št. preg.	DPP (dni)	do 25. dne (%)	25-40 dni (%)	po 40. dnevu (%)	Št. preg.	DPP (dni)	do 25. dne (%)	25-40 dni (%)	po 40. dnevu (%)
1984	12	60.3	41.7	8.3	50.0	40	38.1	50.7	18.3	31.0
1985	7	79.1	28.6	0.0	71.4	58	36.5	58.6	12.1	29.3
1986	7	39.0	52.6	5.3	42.1	52	35.3	61.1	11.1	27.8
1987	9	52.4	22.2	22.2	55.6	72	33.5	58.3	15.3	26.4
1988	23	41.1	39.1	21.7	39.1	87	32.4	56.3	26.4	17.2
1989	26	55.9	30.8	7.7	61.5	77	32.0	59.7	16.9	23.4
1990	22	34.9	45.5	27.3	27.3	90	33.5	56.0	17.6	26.4
1991	17	38.7	29.4	23.5	47.1	76	38.4	56.6	14.5	29.0
1992	14	27.9	71.4	7.1	21.4	106	39.4	50.9	11.3	37.7
1993	18	61.8	16.7	22.2	61.1	122	42.3	48.4	15.6	36.1
1994	51	44.9	49.0	15.7	35.3	192	43.3	42.2	17.7	40.1
1995	167	38.0	44.3	24.0	31.8	217	46.2	37.3	19.8	42.9
1996	473	34.4	51.6	23.3	25.2	333	43.1	46.8	13.8	39.3
1997	482	30.9	55.2	22.8	22.0	451	43.8	48.3	12.2	39.5
1998	556	35.9	52.7	21.9	25.3	607	44.8	48.8	12.5	38.7
1999	362	38.1	51.7	18.2	30.1	725	44.9	44.8	14.6	40.5
2000	508	37.6	50.2	21.3	28.5	793	42.8	44.4	15.4	40.3
2001	506	39.1	50.4	20.6	29.0	804	44.0	47.1	16.0	36.8
2002	498	42.4	48.5	18.0	33.5	774	43.0	45.7	17.6	36.7
2003	601	40.9	46.3	21.6	32.1	1089	47.6	41.3	16.3	42.3
2004	599	42.6	47.7	16.0	36.2	1300	48.9	40.8	13.2	46.0
2005	566	39.9	47.9	19.6	32.5	1138	49.6	39.2	14.7	46.1
2006	457	42.5	48.1	16.8	35.0	1001	48.7	39.8	15.9	44.4
2007	429	47.3	41.7	18.6	39.6	1075	52.4	35.2	15.8	49.1
2008	397	44.0	46.9	18.9	34.2	1147	57.8	33.1	14.2	52.7
2009	411	46.3	49.1	15.6	35.3	1036	58.8	31.9	14.4	53.7
2010	480	46.6	45.1	13.3	41.6	985	54.1	35.6	16.2	48.2
2011	384	46.0	37.7	20.1	42.2	1033	52.5	34.1	18.2	47.7
2012	427	40.5	51.3	14.5	34.2	923	52.2	37.4	14.2	48.4
2013	418	43.5	47.1	18.2	34.7	964	51.7	35.4	15.2	49.5
2014	373	38.5	47.2	22.3	30.6	970	48.7	38.1	15.3	46.6
2015	413	42.8	40.0	22.3	37.8	1021	53.9	34.6	15.3	50.2
2016	402	44.6	44.3	15.9	39.8	1023	48.0	38.2	16.8	45.0
2017	394	44.5	40.9	18.8	40.4	1073	51.1	37.7	14.9	47.3
2018	420	43.5	45.0	17.9	37.1	1010	54.1	35.8	15.3	48.9
2019	208	44.2	42.8	18.8	38.5	449	50.0	37.9	12.5	49.7

## 2.3 Analiza reprodukcijskega ciklusa

Tabela 2.5: Starost mladic ob pravitvi in število krmnih dni na živorojenega pujska pri mladicah na kmetijah

Leto	Št. pras.	Starost ob		do 360 dni (%)	361-420 dni (%)	≥421 dni (%)	Izl. (%)	pred prip. (%)	po prip. (%)	Starost ob izl.	kDOP (dni)	KD/ $P_{\bar{z}}$
1984	87	272.6	388.8	64.4	26.4	9.2					188.8	20.5
1985	65	237.2	352.2	93.8	6.2		3.0			318.0	155.8	17.6
1986	175	255.9	374.0	74.3	17.7	8.0	3.8			339.6	179.6	19.7
1987	149	255.9	373.4	67.1	22.8	10.1	6.9			331.1	183.1	22.0
1988	184	234.8	353.1	70.1	22.3	7.6	3.7			327.6	157.9	18.2
1989	185	240.7	362.9	65.4	26.5	8.1	3.6			371.3	169.4	19.6
1990	165	249.8	366.9	67.3	22.4	10.3	2.9			322.7	170.6	19.0
1991	173	246.8	365.2	54.9	34.1	11.0	1.7			337.7	167.6	18.9
1992	153	257.6	375.8	51.6	32.0	16.3					175.8	19.8
1993	257	260.0	376.9	47.9	36.2	9.3	2.6			577.7	187.2	21.1
1994	349	249.4	368.9	54.2	33.2	12.6	3.5	42.9	57.1	396.3	177.5	19.7
1995	608	245.5	367.5	54.1	33.9	12.0	6.7	49.7	50.3	340.2	163.5	18.5
1996	632	240.3	364.1	58.5	30.1	11.4	14.1	57.8	42.2	294.7	168.4	18.7
1997	545	241.8	364.3	63.3	30.8	5.9	16.1	56.2	43.8	306.3	173.0	19.2
1998	893	234.8	357.7	61.0	30.9	8.1	10.9	47.0	53.0	311.3	164.2	17.9
1999	794	242.6	365.9	53.9	34.9	11.2	19.6	57.7	42.3	311.6	184.4	20.2
2000	698	236.6	362.2	57.7	32.4	9.9	16.7	42.7	57.3	316.2	173.7	18.9
2001	899	237.6	363.0	59.6	29.4	11.0	21.2	48.2	51.8	300.7	183.2	20.8
2002	862	237.2	364.2	56.6	33.2	10.2	19.0	47.8	52.2	309.6	179.5	19.6
2003	940	241.0	366.5	22.1	42.6	35.3	19.4	47.4	52.6	323.6	185.8	20.3
2004	1023	242.6	369.8	52.5	34.2	13.3	21.1	59.2	40.8	303.6	187.5	20.6
2005	928	251.7	378.1	43.8	39.3	16.9	18.0	46.4	53.6	327.3	191.2	21.0
2006	977	248.8	374.3	44.2	40.9	14.8	17.2	56.6	43.4	322.1	185.6	19.9
2007	969	243.5	369.2	54.7	32.5	12.8	20.8	65.4	34.6	302.0	183.2	19.7
2008	874	245.8	370.4	53.5	32.8	13.6	25.0	74.4	25.6	292.4	186.6	19.5
2009	866	240.8	365.7	58.5	29.0	12.5	21.0	64.1	35.9	305.8	181.1	19.4
2010	922	249.6	376.4	49.0	35.8	15.2	23.3	59.5	40.5	303.6	191.7	20.2
2011	1042	245.2	370.8	51.0	35.8	13.2	22.1	65.3	34.7	297.9	187.4	19.0
2012	964	243.3	369.0	55.3	32.5	12.2	23.0	55.1	44.9	308.1	190.2	18.6
2013	1035	238.5	362.7	57.7	32.7	9.6	21.5	52.5	47.5	291.9	176.0	16.9
2014	981	239.1	362.6	59.6	31.4	9.0	21.4	63.0	37.0	289.2	176.0	16.6
2015	845	242.8	367.8	54.5	34.1	11.4	21.2	54.4	45.6	314.4	186.2	18.2
2016	907	243.0	369.2	55.1	32.4	12.5	17.7	49.5	50.5	312.0	184.4	17.0
2017	824	240.0	365.0	53.5	35.6	10.9	20.1	52.4	47.6	299.0	179.2	16.7
2018	818	238.2	364.3	55.3	34.6	10.1	18.0	54.3	45.7	298.1	174.4	15.9
2019	443	239.4	366.8	54.4	32.5	13.1	19.0	55.1	44.9	309.0	181.2	16.9

Tabela 2.6: Doba med prasiatvama in število krmnih dni na pujska po letih na kmetijah

Leto	Št. pras.	DMP (dni)	do 160 dni (%)	161-200 dni (%)	≥201 dni (%)	Izl. (%)	DI (dni)	kDMP (dni)	$G_L$	$P_{\bar{z}}/$ leto	KD/ $P_{\bar{z}}$
1984	510	162.2	70.0	21.4	8.6	7.9	105.3	171.3	2.10	21.4	17.0
1985	607	158.8	76.3	18.5	5.3	10.3	72.9	167.2	2.20	21.9	16.6
1986	618	160.2	74.8	18.8	6.5	9.9	62.9	167.2	2.20	21.5	17.0
1987	701	160.9	71.9	21.8	6.3	14.1	82.0	174.4	2.10	20.7	17.6
1988	505	161.6	61.2	34.1	4.7	18.9	73.5	178.7	2.00	20.5	17.8
1989	637	162.9	59.7	34.1	6.3	15.3	94.3	179.9	2.00	20.9	17.5
1990	748	166.2	52.3	39.0	8.7	11.8	71.5	175.7	2.10	20.7	17.6
1991	726	166.6	52.3	39.1	8.5	13.6	84.4	179.8	2.00	20.7	17.7
1992	769	169.1	46.6	46.0	7.5	13.1	87.5	182.3	2.00	20.3	18.0
1993	684	174.4	35.1	49.7	15.2	18.6	112.9	200.1	1.80	18.7	19.5
1994	1023	171.7	46.8	41.4	11.7	16.4	104.8	192.5	1.90	19.7	18.5
1995	2038	169.4	50.4	39.8	9.8	16.1	99.0	189.4	1.90	20.4	17.9
1996	1789	170.4	50.8	38.2	11.1	18.0	103.0	194.4	1.90	19.9	18.4
1997	2220	170.6	57.8	30.5	11.7	16.1	105.6	191.7	1.90	19.8	18.4
1998	2594	168.3	54.4	36.5	9.1	18.0	109.2	193.4	1.90	19.9	18.4
1999	2890	168.4	55.7	34.4	10.0	20.6	115.4	199.8	1.80	19.0	19.2
2000	2959	168.2	58.2	31.2	10.5	16.6	106.8	190.5	1.90	20.0	18.2
2001	2796	167.1	61.5	29.0	9.4	20.8	102.5	194.9	1.90	19.3	19.0
2002	3163	166.0	63.7	27.5	8.8	18.4	103.1	190.2	1.90	20.0	18.3
2003	3605	167.6	25.4	56.2	18.4	20.3	123.4	200.4	1.82	18.8	19.4
2004	3833	170.6	59.3	28.2	12.5	19.2	128.8	202.8	1.80	18.4	19.8
2005	3998	169.9	58.4	30.1	11.5	17.4	117.5	196.0	1.86	19.4	18.8
2006	4043	168.8	59.6	29.3	11.2	17.7	121.7	196.2	1.86	19.4	18.8
2007	4184	168.9	60.8	28.1	11.1	18.9	118.1	197.8	1.85	19.4	18.8
2008	4058	169.1	61.4	27.7	10.8	19.5	119.1	199.7	1.83	19.2	19.0
2009	4133	167.5	63.9	25.8	10.3	17.1	120.4	194.0	1.88	19.9	18.4
2010	3740	168.3	66.6	22.9	10.5	19.8	113.5	197.7	1.85	19.5	18.7
2011	3722	169.3	62.0	26.7	11.4	21.2	120.0	202.7	1.80	19.3	18.9
2012	3997	165.0	68.7	22.6	8.7	18.1	104.2	188.9	1.93	21.7	16.8
2013	4133	164.3	70.7	20.0	9.4	19.9	106.4	191.8	1.90	21.4	17.1
2014	4134	164.2	68.1	23.5	8.4	19.6	103.7	190.8	1.91	21.4	17.0
2015	4047	167.1	64.8	25.6	9.6	19.0	126.9	197.6	1.85	20.7	17.7
2016	3789	164.3	68.4	23.1	8.5	17.4	118.3	190.2	1.92	22.2	16.5
2017	3724	166.0	67.7	21.6	10.7	18.3	123.9	195.2	1.87	21.3	17.1
2018	3834	165.4	69.7	20.2	10.0	19.0	118.6	194.6	1.88	21.7	16.9
2019	1817	165.8	64.8	25.3	10.0	20.1	104.9	192.8	1.89	21.6	16.9

Tabela 2.7: Velikost gnezda ob rojstvu, gospodarnost priraje pujskov in delež letne obnove črede svinj na kmetijah

Leto	Št. pras.	Št. izl.	$P_{\bar{z}}$ / gn.	KD/ gn.	$G_L$	KD/ $P_{\bar{z}}$	Št. svinj v čredi	Remont (%)	$G_S$
1984									
1985									
1986									
1987									
1988									
1989									
1990									
1991									
1992									
1993									
1994	1372	221	10.04	187.2	1.95	18.6	816	27.1	7.20
1995	2646	595	10.17	174.5	2.09	17.2	2290	26.0	8.05
1996	2421	849	10.17	178.7	2.04	17.6	2209	38.4	5.32
1997	2765	1008	10.14	180.9	2.02	17.8	2597	38.8	5.20
1998	3487	1042	10.18	176.1	2.07	17.3	3077	33.9	6.12
1999	3684	1420	10.13	192.4	1.90	19.0	2938	48.3	3.93
2000	3658	1054	10.20	183.3	1.99	18.0	2632	40.0	4.97
2001	3695	1370	9.92	189.6	1.93	19.1	2657	51.6	3.73
2002	4025	1221	10.14	185.9	1.96	18.3	2683	45.5	4.32
2003	4545	1511	10.10	194.6	1.90	19.3	3187	47.4	4.01
2004	4856	1548	9.98	197.2	1.85	19.8	3284	47.1	3.93
2005	4926	1338	10.19	194.3	1.88	19.1	3277	40.8	4.60
2006	5020	1411	10.20	192.1	1.90	18.8	3438	41.0	4.63
2007	5153	1613	10.29	192.6	1.90	18.7	3428	47.0	4.03
2008	4932	1728	10.35	195.2	1.87	18.9	3317	52.1	3.59
2009	4999	1429	10.36	189.7	1.92	18.3	3221	44.4	4.34
2010	4662	1564	10.36	195.7	1.87	18.9	3085	50.7	3.68
2011	4764	1578	10.54	197.4	1.85	18.7	3073	51.4	3.60
2012	4961	1430	11.04	189.3	1.93	17.2	2999	47.7	4.04
2013	5168	1601	11.08	186.6	1.96	16.9	3153	50.8	3.85
2014	5115	1571	11.10	186.0	1.96	16.8	3125	50.3	3.90
2015	4892	1477	11.00	193.9	1.88	17.6	3162	46.7	4.03
2016	4696	1201	11.41	188.4	1.94	16.5	2879	41.7	4.64
2017	4548	1290	11.28	190.1	1.92	16.9	2846	45.3	4.24
2018	4652	1314	11.44	188.1	1.94	16.5	2899	45.3	4.28
2019	2260	689	11.29	188.8	1.93	16.7	1438	47.9	4.03

Tabela 2.8: Dolžina laktacije in starostna struktura po letih na kmetijah

Leto	DOLŽINA LAKTACIJE (dni)							P R A S I T V E		
	Lakt. (dni)	do 14 dni (%)	15-19 dni (%)	20-24 dni (%)	25-29 dni (%)	30-34 dni (%)	≥35 dni (%)	prva (%)	2.-7. (%)	≥8 (%)
1984	30.6	4.3	0.4	2.7	92.6	0.0	0.0	25.4	74.6	0.0
1985	30.4	7.0	0.1	6.5	86.4	0.0	0.0	9.3	66.3	24.4
1986	29.3	4.0	0.7	9.3	86.0	0.0	0.0	21.0	56.7	22.3
1987	30.0	4.0	1.0	8.5	86.5	0.0	0.0	16.4	68.2	15.4
1988	31.4	6.0	1.9	5.8	86.3	0.0	0.0	23.5	67.8	8.7
1989	32.1	3.6	1.1	6.0	89.3	0.0	0.0	20.3	75.2	4.5
1990	34.0	3.9	1.1	8.4	86.6	0.0	0.0	16.7	74.5	8.8
1991	35.2	4.3	0.6	7.4	87.7	0.0	0.0	17.3	71.5	11.2
1992	35.4	4.3	0.6	3.8	91.3	0.0	0.0	14.7	68.3	17.0
1993	36.5	4.6	1.2	3.8	90.4	0.0	0.0	23.9	61.7	14.4
1994	35.5	2.2	0.5	4.4	11.0	26.1	55.8	25.4	64.4	10.2
1995	35.5	1.8	0.4	1.1	11.5	29.3	55.9	23.0	68.6	8.4
1996	35.2	1.9	0.4	2.0	13.4	26.2	56.1	26.1	66.0	7.9
1997	34.7	3.0	0.6	2.7	14.6	29.8	49.2	19.7	71.8	8.5
1998	34.6	2.8	0.6	2.6	14.2	33.7	46.1	57.1	37.2	5.7
1999	33.8	3.0	0.9	4.0	16.6	34.5	41.1	46.7	45.4	7.9
2000	32.6	2.9	1.1	5.0	19.6	38.1	33.2	43.3	46.1	10.6
2001	31.8	3.4	0.8	5.6	25.3	39.5	25.5	45.4	44.7	9.9
2002	31.5	3.4	1.3	5.3	26.4	40.5	23.1	39.9	49.5	10.6
2003	31.5	3.9	0.9	5.8	29.6	36.8	22.9	39.1	51.2	9.7
2004	32.6	3.6	0.6	3.0	22.8	42.0	28.1	37.4	51.9	10.6
2005	33.1	3.2	0.6	2.7	22.7	38.7	32.2	35.0	54.7	10.4
2006	33.0	3.0	0.6	3.1	25.2	37.2	30.9	37.8	51.4	10.8
2007	32.5	3.4	0.7	3.2	26.6	38.5	27.7	35.9	51.5	12.6
2008	32.8	3.9	0.4	2.1	21.8	41.7	30.1	35.7	51.5	12.8
2009	32.8	4.0	0.4	1.9	23.6	40.6	29.5	34.3	53.1	12.6
2010	32.1	4.1	0.4	2.1	22.6	44.8	26.1	36.0	51.5	12.6
2011	32.3	3.6	0.8	3.6	20.6	41.9	29.5	34.8	53.7	11.5
2012	31.1	3.7	2.3	6.7	22.0	40.3	25.0	32.2	57.5	10.3
2013	31.1	3.2	1.6	6.6	25.9	37.9	24.8	33.4	56.9	9.7
2014	31.4	4.0	2.7	6.9	23.3	36.9	26.3	32.8	56.2	11.0
2015	31.7	2.7	1.4	8.2	23.6	36.2	27.9	32.6	55.3	12.1
2016	31.2	2.7	0.6	8.6	27.0	36.2	24.8	32.1	55.0	12.9
2017	31.2	2.6	0.7	7.2	31.8	32.0	25.8	32.1	53.9	14.0
2018	31.3	3.2	0.6	6.1	30.2	35.7	24.2	31.4	54.5	14.1
2019	32.1	3.0	0.7	4.6	27.3	35.4	29.0	34.2	52.8	13.0



## 2.4 Interim obdobje in podstavitveni premor

Tabela 2.9: Interim obdobje po letih na kmetijah

Leto	PRVESNICE				STARE SVINJE			
	IO (dni)	do 12 dni (%)	12-40 dni (%)	≥41 dni (%)	IO (dni)	do 12 dni (%)	12-40 dni (%)	≥41 dni (%)
1984	25.2	50.5	29.4	20.1	10.7	81.8	14.4	3.8
1985	30.1	46.3	26.0	27.7	9.3	87.6	10.1	2.3
1986	21.9	47.0	32.7	20.3	13.1	79.8	12.9	7.3
1987	23.1	57.1	25.2	17.7	13.8	77.7	15.4	6.9
1988	17.6	70.7	19.2	10.1	10.0	83.4	13.5	3.1
1989	21.8	53.5	30.8	15.7	10.9	81.6	14.2	4.2
1990	26.9	55.3	27.7	17.0	13.3	74.8	19.2	6.0
1991	29.8	45.5	32.9	21.6	12.5	79.5	14.1	6.4
1992	28.2	33.5	30.0	36.5	12.2	77.8	17.3	4.9
1993	24.9	47.7	30.7	21.6	14.0	72.2	21.5	6.4
1994	30.2	37.6	33.3	29.1	13.0	68.6	17.5	13.9
1995	21.9	54.3	29.8	15.9	12.0	73.7	20.4	5.9
1996	20.9	51.3	32.8	15.9	10.7	79.7	15.3	5.0
1997	24.7	50.6	31.1	18.3	11.5	77.5	17.5	4.9
1998	17.9	59.1	29.1	11.7	10.8	79.8	15.0	4.1
1999	18.7	57.3	30.3	12.6	11.3	79.3	16.1	5.0
2000	20.6	58.4	26.9	14.7	10.9	80.9	14.8	4.3
2001	18.0	59.6	25.4	14.9	11.1	78.4	14.7	6.8
2002	19.3	58.5	28.4	13.1	10.2	82.2	14.3	3.5
2003	18.2	62.1	24.8	13.1	11.5	79.5	15.7	4.8
2004	22.1	58.7	22.0	19.3	12.1	80.1	12.9	7.0
2005	21.2	57.5	27.0	15.5	11.6	80.0	15.0	5.0
2006	20.5	59.4	24.5	16.1	11.6	79.6	14.9	5.5
2007	18.5	61.4	24.9	13.7	11.2	82.2	13.0	4.8
2008	18.4	67.3	19.4	13.3	11.8	81.3	12.7	6.0
2009	16.9	70.2	17.4	12.4	12.0	82.9	11.1	6.0
2010	17.9	69.1	19.4	11.5	9.9	85.8	10.8	3.4
2011	17.0	66.3	23.7	10.0	11.1	83.6	11.2	5.2
2012	15.0	75.4	15.8	8.8	10.1	85.2	11.1	3.8
2013	12.3	80.1	13.4	6.5	9.0	88.1	8.8	3.1
2014	13.7	77.1	14.9	8.0	9.0	88.5	8.3	3.2
2015	14.7	75.1	15.3	9.6	9.2	87.9	8.7	3.4
2016	14.4	78.3	13.1	8.6	9.8	85.8	10.5	3.7
2017	15.2	75.5	13.9	10.6	9.1	88.4	8.6	3.0
2018	15.4	74.4	15.5	10.1	8.6	88.8	8.3	2.9
2019	15.8	73.7	15.4	10.9	10.2	85.2	10.6	4.2

Tabela 2.10: Poodstavitveni premor po letih na kmetijah

Leto	PRVESNICE					STARE SVINJE				
	Št. svinj	PP (dni)	do 12 dni (%)	13-60 dni (%)	≥61 dni (%)	Št. svinj	PP (dni)	do 12 dni (%)	13-60 dni (%)	≥61 dni (%)
1984	109	31.3	44.0	40.5	15.5	527	15.4	73.8	20.8	5.4
1985	69	37.2	42.0	40.3	17.7	610	13.8	79.7	16.0	4.3
1986	147	25.1	47.1	36.1	16.8	576	16.8	75.4	14.4	10.2
1987	142	28.7	51.5	34.5	14.0	664	18.0	70.4	23.6	6.0
1988	167	24.0	56.3	34.8	8.9	511	15.5	73.6	22.2	4.2
1989	215	28.5	46.5	30.7	22.8	540	14.3	73.7	23.5	2.8
1990	177	33.6	49.7	35.6	14.7	738	17.7	68.0	26.3	5.7
1991	143	32.1	41.3	42.0	16.7	717	17.3	72.1	21.9	6.0
1992	167	35.7	37.7	42.5	19.8	774	17.2	69.8	23.8	6.5
1993	218	30.6	42.2	44.0	13.8	643	20.5	63.1	30.0	6.8
1994	357	30.2	33.0	39.0	28.0	1022	20.5	61.1	24.8	14.1
1995	427	28.5	46.7	39.9	13.4	1385	17.8	67.2	25.8	6.9
1996	587	31.1	43.3	40.4	16.3	1723	17.9	69.1	23.6	7.3
1997	743	33.8	41.6	39.7	18.5	2149	18.4	67.9	24.5	7.4
1998	745	28.8	47.7	39.6	12.6	2793	20.0	67.7	23.2	8.1
1999	1035	29.9	45.0	40.1	15.1	3060	21.5	66.1	24.8	9.3
2000	783	33.5	43.9	38.3	17.8	3348	20.6	66.5	24.6	8.9
2001	1058	31.6	45.1	36.0	18.9	3031	20.0	65.9	24.0	10.1
2002	1028	31.4	45.3	40.6	14.1	3329	19.7	69.2	22.9	7.9
2003	1219	32.5	47.5	35.4	17.1	3959	23.0	65.4	24.1	10.5
2004	1404	40.3	43.2	33.0	23.8	4416	25.8	63.9	22.5	13.6
2005	1344	40.6	43.1	35.5	21.4	4385	24.1	65.6	23.5	10.9
2006	1176	36.4	45.3	34.6	20.1	4465	22.3	66.6	23.1	10.3
2007	1246	34.3	49.1	33.9	17.0	4519	23.8	68.3	20.7	11.0
2008	1300	38.4	50.6	27.4	22.0	4551	25.2	67.2	21.2	11.6
2009	1139	35.7	54.4	27.2	18.4	4584	26.3	69.5	18.1	12.4
2010	1120	38.8	52.3	29.5	18.2	4053	24.1	70.0	19.5	10.5
2011	1301	36.4	46.8	33.9	19.3	4095	22.9	69.4	19.8	10.8
2012	1244	31.5	58.7	24.5	16.8	4128	20.8	72.6	18.6	8.8
2013	1236	26.3	61.9	25.6	12.5	4381	19.4	74.7	16.3	9.0
2014	1328	27.6	60.9	25.0	14.1	4396	18.4	75.0	16.7	8.3
2015	1057	31.7	55.8	27.9	16.3	4466	20.7	73.0	17.3	9.7
2016	1097	27.6	63.5	23.4	13.1	4233	22.7	70.7	18.8	10.5
2017	1092	33.8	55.2	25.5	19.3	4142	20.9	73.1	16.9	10.0
2018	1100	35.6	55.5	24.4	20.1	4283	21.9	73.2	16.1	10.7
2019	540	33.2	56.6	24.3	19.1	1940	24.0	69.9	18.6	11.5

## 2.5 Analiza izločitev

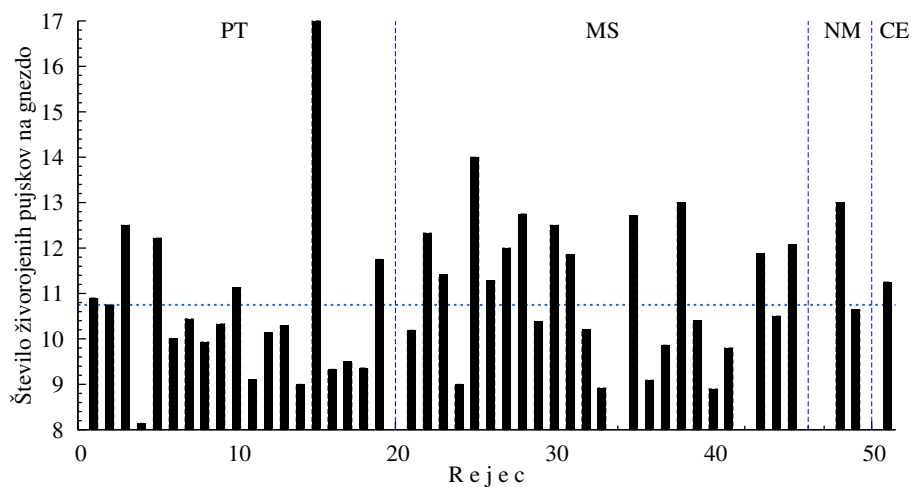
Tabela 2.11: Izločitve svinj po letih na kmetijah

Leto	MLADICE							STARE SVINJE					
	Št. izl.	DOI (dni)	Izločitve		Vzrok izločitve			Št. izl.	DI (dni)	Izločitve		Vzrok izločitve	
			pred	po pr.	8	9	10			pred	po pr.	9	10
1984	0							50	95.6	66.0	34.0	14.0	14.0
1985	4	178.5						69	75.1	68.1	31.9	10.1	13.0
1986	7	138.2						83	59.5	78.3	21.7	7.2	6.0
1987	20	94.9						139	69.3	74.8	25.2	7.9	5.0
1988	6	144.0						112	77.6	70.5	29.5	1.8	5.4
1989	6	171.3						119	101.2	56.3	43.7	8.4	16.8
1990	6	139.3						102	73.7	76.5	25.5	10.8	6.9
1991	3	137.7						125	85.8	63.2	36.8	9.6	4.8
1992	0							105	92.0	59.1	40.9	14.3	6.7
1993	6	149.8						158	100.4	64.6	35.4	8.2	7.0
1994	17	168.6	52.9	47.1	17.6	29.4	5.9	127	101.1	71.7	28.3	12.6	6.3
1995	193	108.6	60.6	39.4	26.4	23.3	5.2	308	96.8	65.3	34.7	10.1	5.5
1996	495	95.2	57.4	42.6	30.7	31.9	4.4	423	105.2	58.9	41.1	13.2	8.7
1997	524	116.3	52.7	47.3	22.1	27.7	10.9	422	109.9	55.0	45.0	19.9	8.1
1998	563	108.2	51.5	48.5	17.9	30.0	9.6	638	107.8	56.1	43.9	17.7	6.4
1999	551	113.5	57.9	42.1	18.1	28.9	8.3	730	121.5	49.7	50.3	18.6	9.2
2000	510	113.9	45.1	54.9	21.4	37.8	7.6	634	110.5	49.1	50.9	15.5	10.1
2001	619	110.4	45.4	54.6	21.5	34.9	10.8	780	109.0	48.6	51.4	17.4	12.4
2002	474	108.8	48.9	51.1	21.9	33.8	8.6	769	105.5	51.6	48.4	17.9	10.0
2003	684	125.9	52.2	47.8	21.3	39.5	6.6	915	121.8	43.7	56.3	22.4	9.4
2004	577	113.2	57.4	42.6	22.4	22.9	7.8	974	138.7	45.5	54.5	17.5	10.9
2005	467	149.4	39.4	60.6	29.3	34.5	12.2	894	124.4	49.3	50.7	15.5	15.1
2006	625	123.9	62.6	37.4	42.6	22.7	7.4	924	130.6	49.1	50.9	21.8	9.5
2007	634	102.8	66.9	33.1	41.0	19.1	5.5	1008	124.3	53.5	46.5	17.4	10.6
2008	669	104.5	71.3	28.7	46.5	16.6	6.6	1001	136.3	46.7	53.3	20.0	11.5
2009	600	99.8	62.8	37.2	45.0	24.0	8.2	908	125.8	52.8	47.2	20.7	10.1
2010	585	116.7	58.1	41.9	29.6	21.7	13.2	966	129.8	51.8	48.2	22.5	11.9
2011	566	111.8	59.9	40.1	32.9	27.4	7.1	932	126.1	48.0	52.0	26.8	11.8
2012	613	104.7	54.3	45.7	30.7	27.6	11.3	959	103.8	56.6	43.4	21.5	8.8
2013	552	102.6	52.7	47.3	28.8	28.4	11.6	1095	110.4	55.4	44.6	19.6	10.1
2014	556	96.0	57.6	42.4	30.9	27.7	8.8	974	113.2	48.5	51.5	24.0	11.4
2015	454	116.9	54.0	46.0	32.4	26.9	13.2	903	134.7	46.7	53.3	24.8	14.5
2016	404	111.3	52.2	47.8	27.7	30.2	11.4	838	126.5	49.4	50.6	18.3	14.7
2017	444	108.9	47.1	52.9	27.9	32.0	14.9	845	133.2	50.1	49.9	20.1	15.5
2018	411	108.4	53.3	46.7	33.1	28.0	12.2	938	122.5	51.7	48.3	16.8	15.4
2019	171	117.7	52.6	47.4	35.7	26.3	8.2	407	125.6	54.8	45.2	17.9	10.8

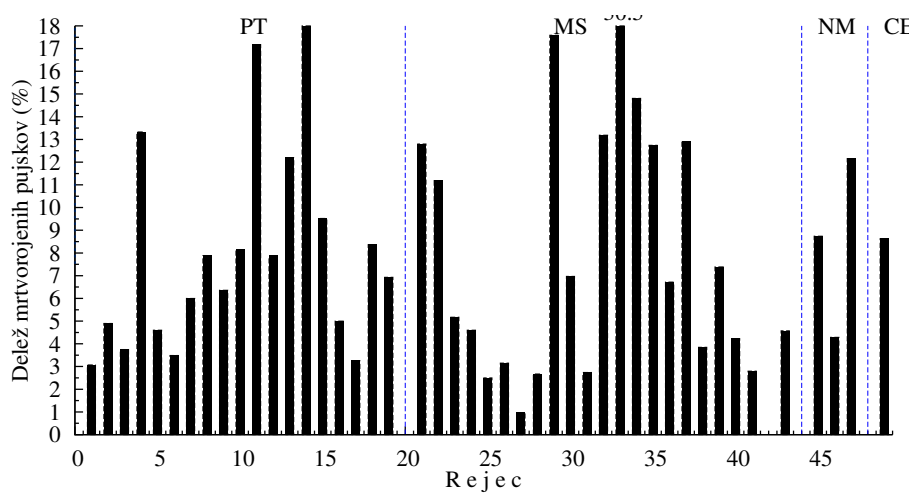


## Poglavje 3

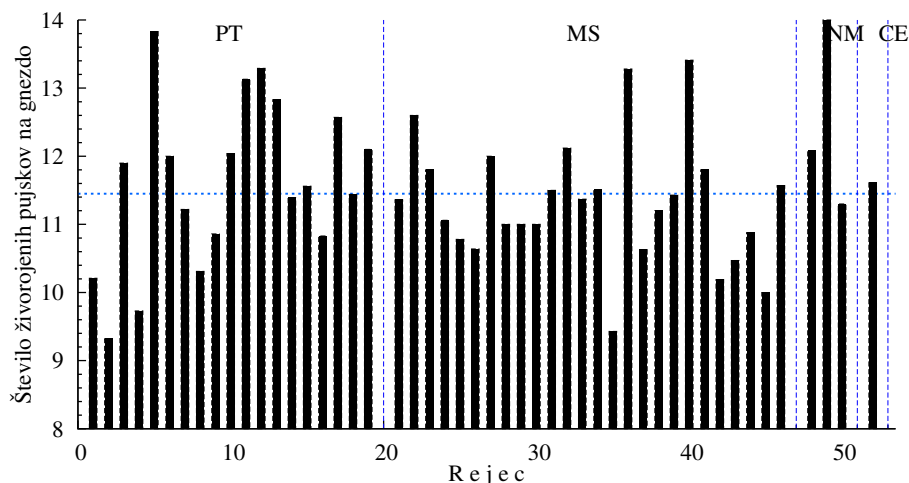
### Grafični prikaz rezultatov plodnosti



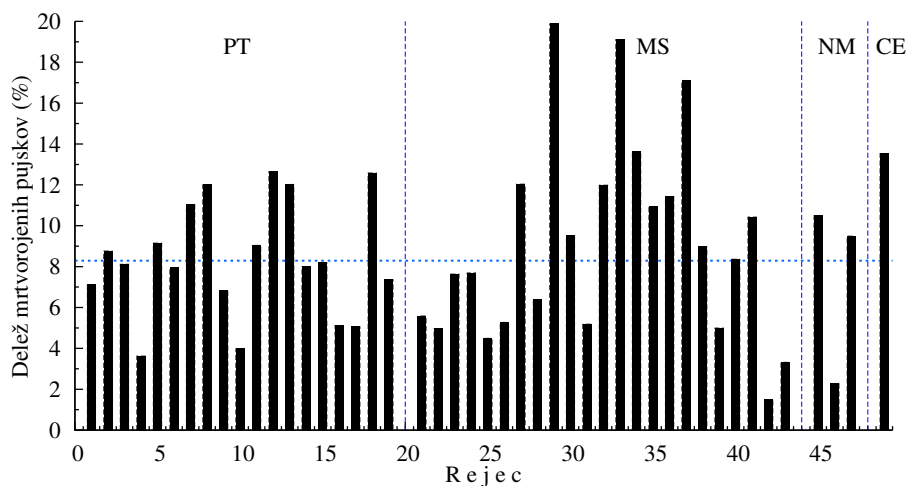
Slika 3.1: Število živorojenih pujskov pri mladicah na kmetijah po zavodih v Sloveniji v letu 2019



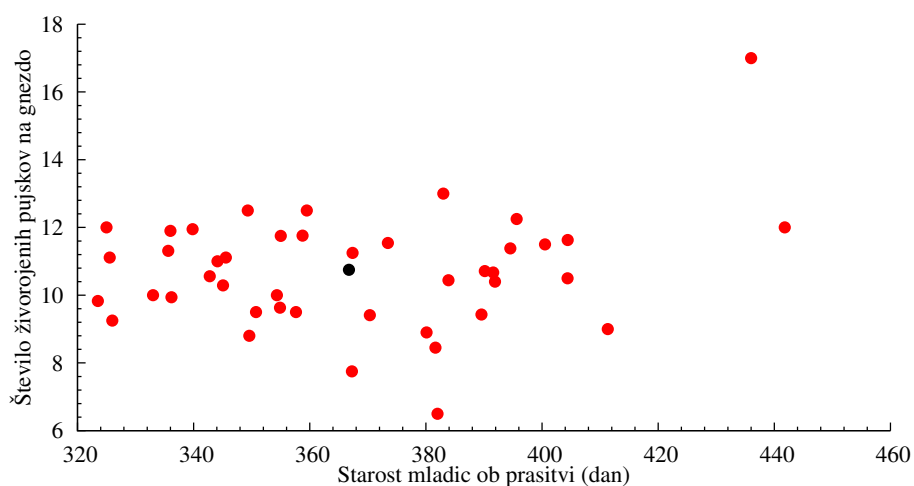
Slika 3.2: Delež mrtvorjenih pujskov pri mladicah na kmetijah po zavodih v Sloveniji v letu 2019



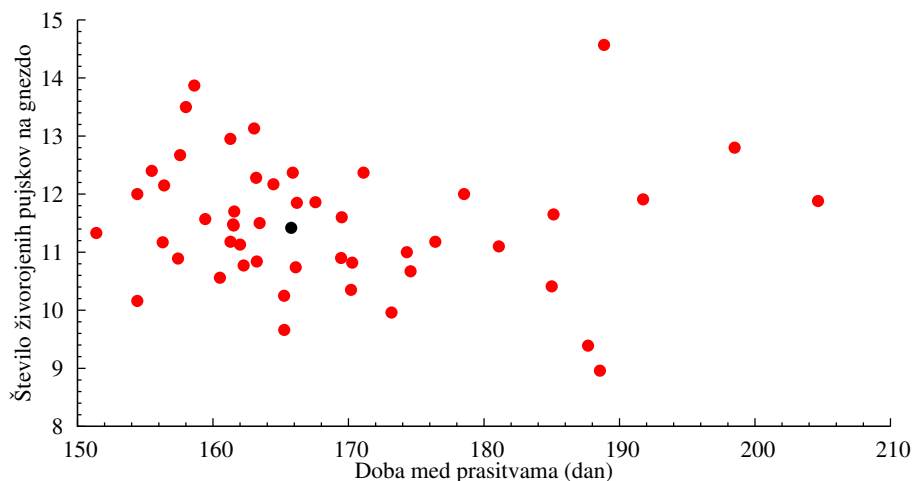
Slika 3.3: Število živorojenih pujskov pri starih svinjah na kmetijah po zavodih v Sloveniji v letu 2019



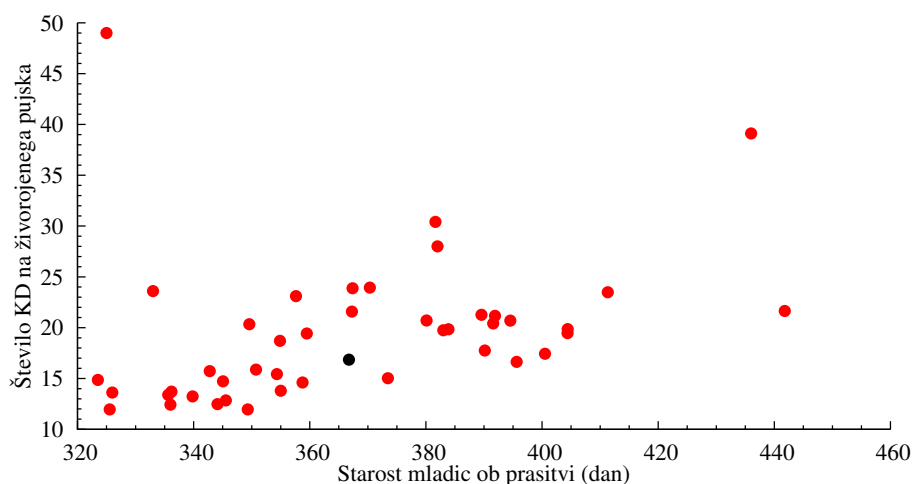
Slika 3.4: Delež mrtvorjenih pujskov pri starih svinjah na kmetijah po zavodih v Sloveniji v letu 2019



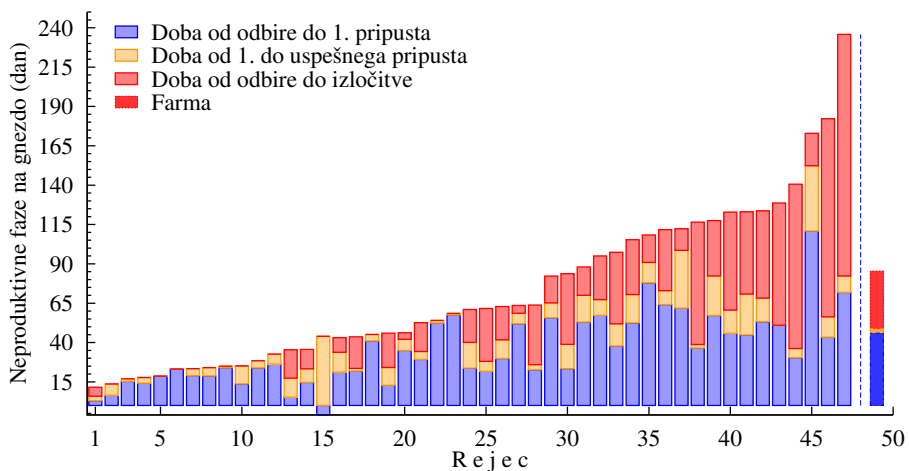
Slika 3.5: Število živorojenih pujskov na gnezdo in starost mladic ob prasniti na kmetijah v Sloveniji v letu 2019



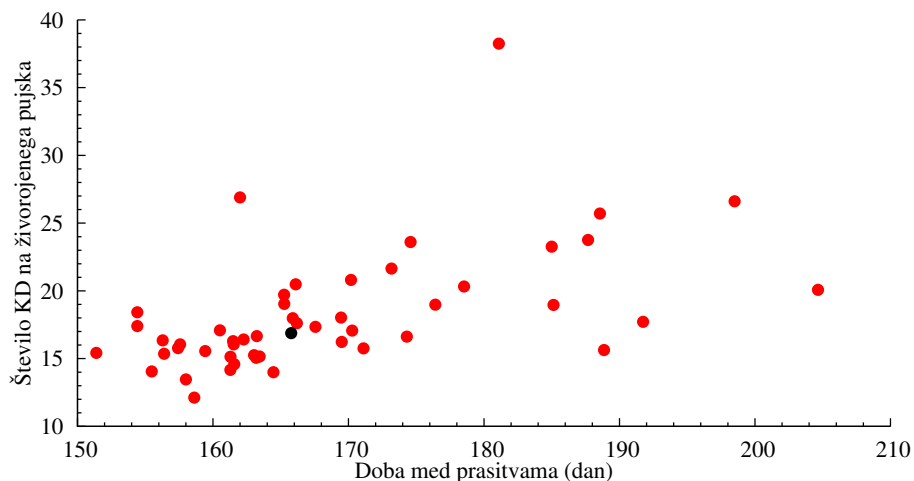
Slika 3.6: Število živorojenih pujskov na gnezdo in doba med prasingama na kmetijah v Sloveniji v letu 2019



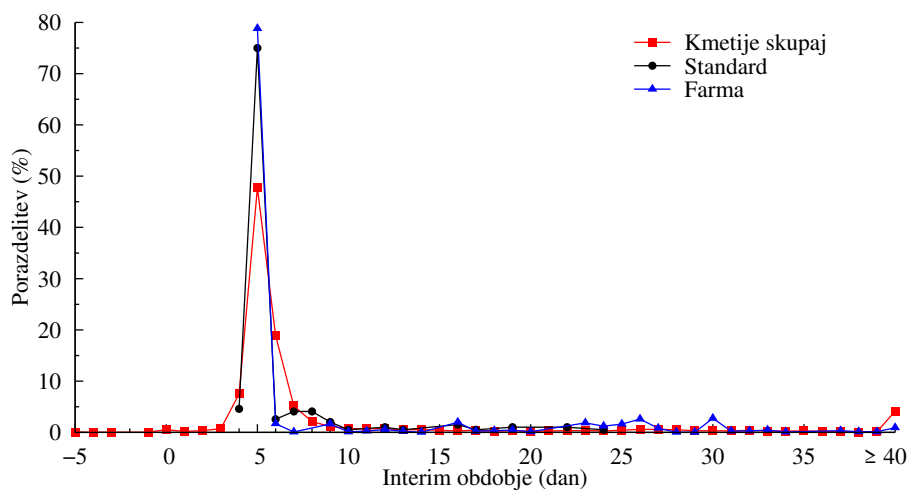
Slika 3.7: Število krmnih dni na živorojenega pujska in starost mladic ob prasingu na kmetijah v Sloveniji v letu 2019



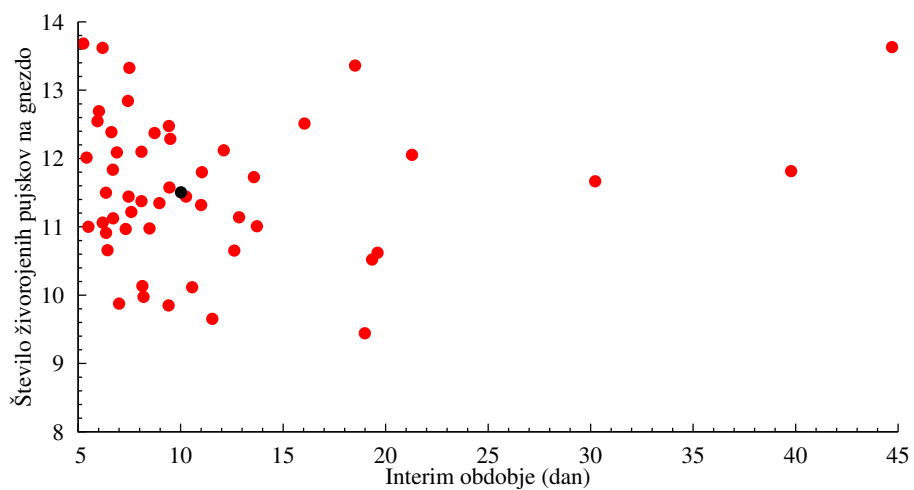
Slika 3.8: Dolžina neproductivnih faz na gnezdo pri mladicah na kmetijah v 2019



Slika 3.9: Število krmnih dni na živorojenega pujska in doba med pravitvama na kmetijah v Sloveniji v letu 2019

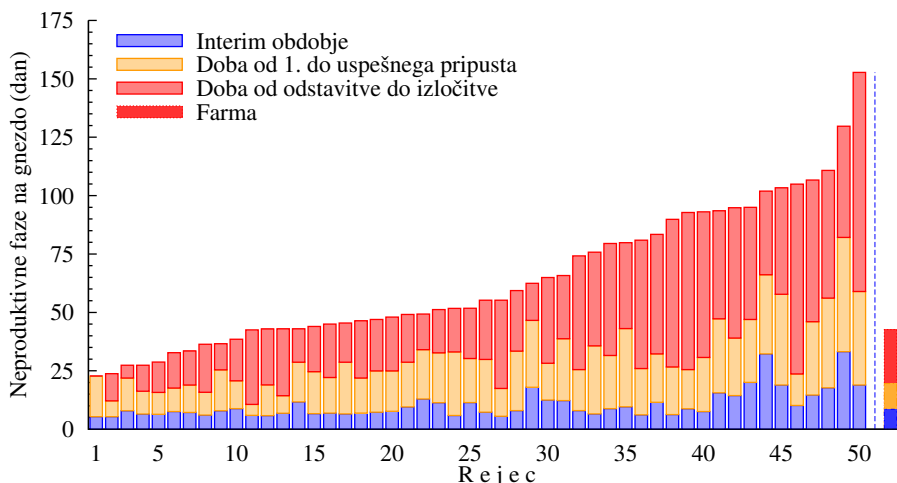


Slika 3.10: Porazdelitev dolžine interim obdobja na kmetijah v Sloveniji v letu 2019 v primerjavi s farmo in standardom

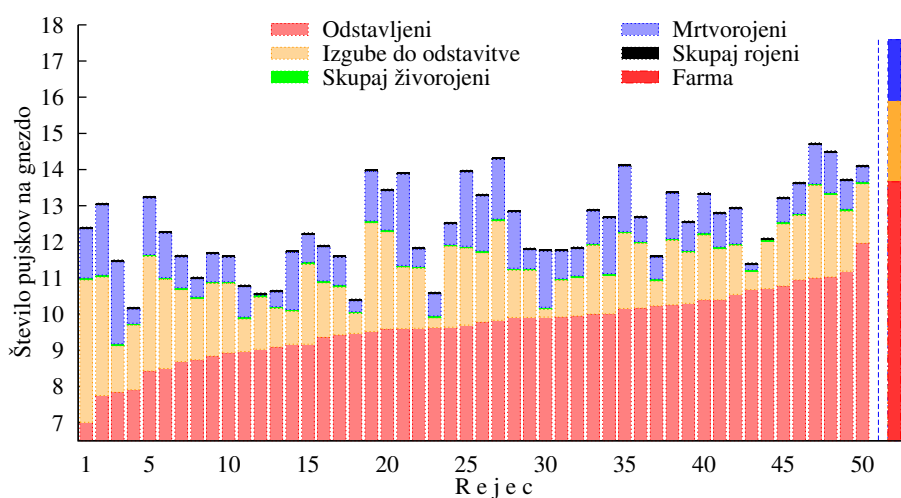


Slika 3.11: Dolžina interim obdobja in število živorojenih pujskov pri starih svinjah na kmetijah v Sloveniji v letu 2019

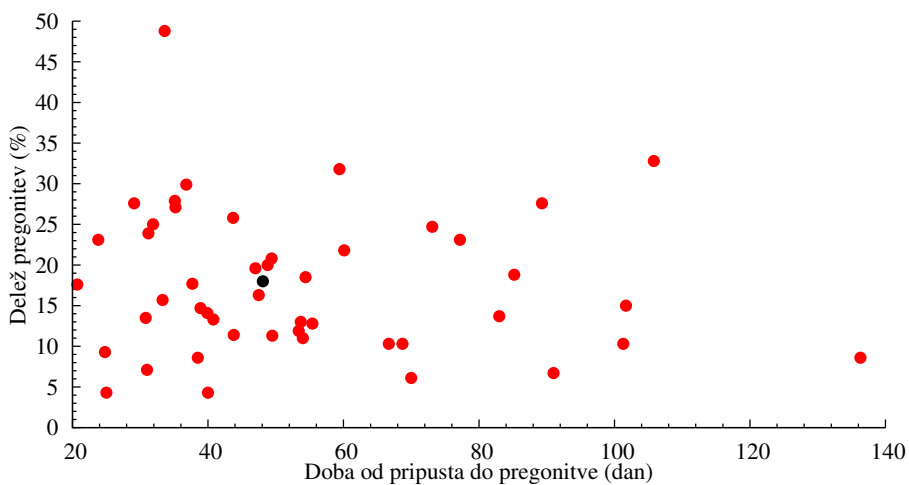




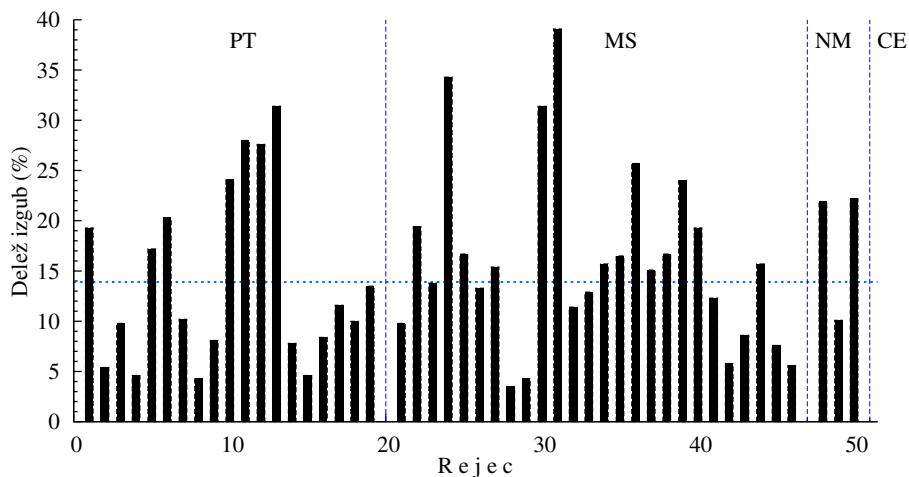
Slika 3.12: Dolžina neproduktivnih faz pri starih svinjah na kmetijah v Sloveniji v 2019



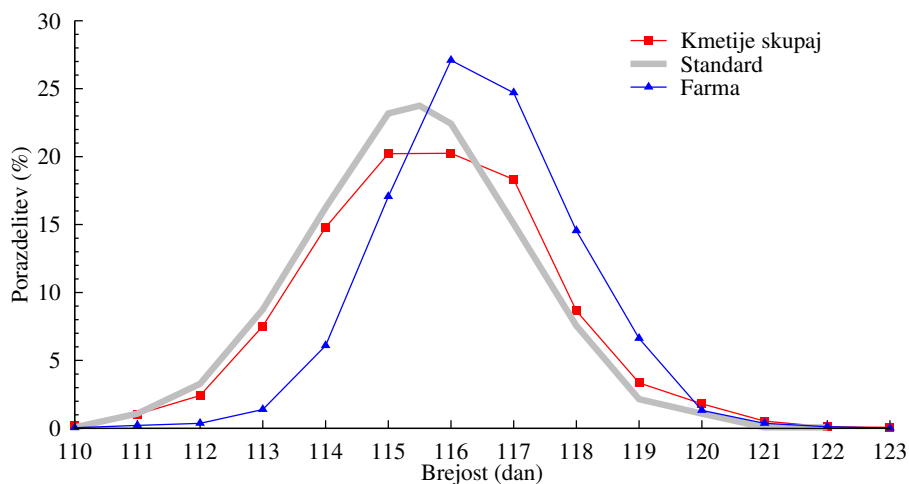
Slika 3.13: Velikost gnezda na kmetijah v 2019



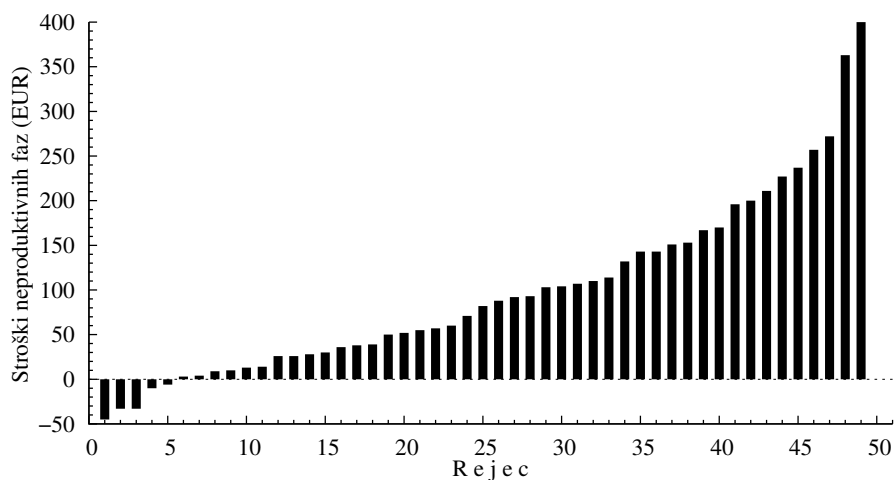
Slika 3.14: Delež pregonitev in doba od pripusta do pregonitve na kmetijah v Sloveniji v letu 2019



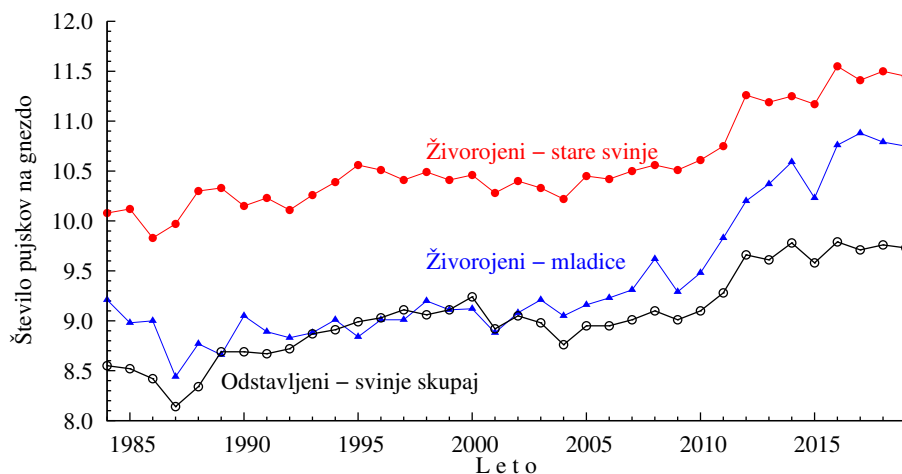
Slika 3.15: Delež izgubljenih pujskov na kmetijah po zavodih v Sloveniji v letu 2019



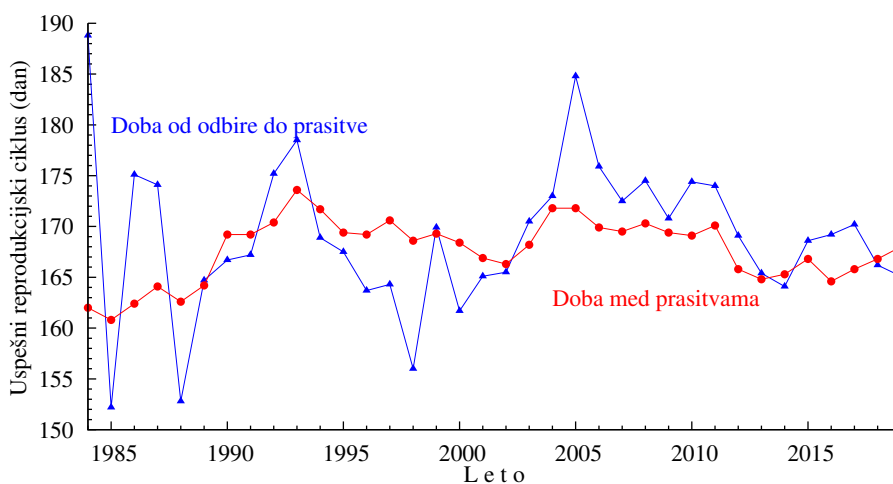
Slika 3.16: Porazdelitev dolžine brejosti na kmetijah v Sloveniji v letu 2019 v primerjavi s farmo in standardom



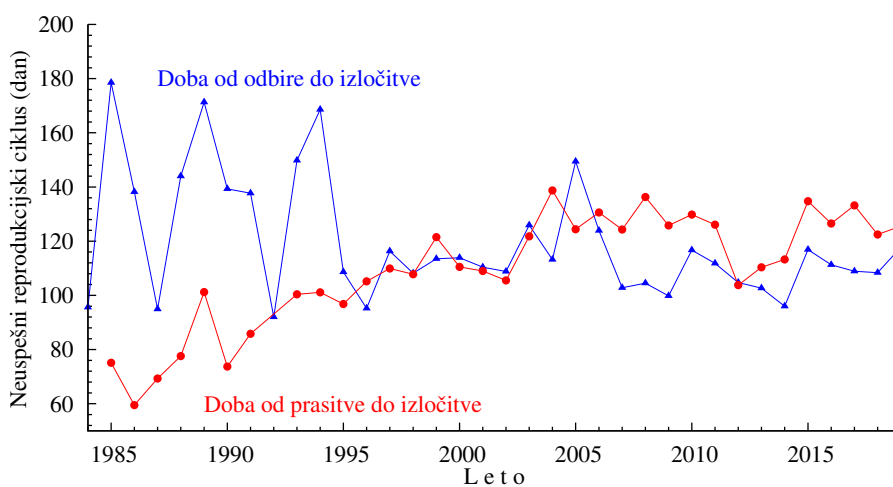
Slika 3.17: Dodatni stroški neproduktivnih faz na gnezdo v EUR na kmetijah v Sloveniji v letu 2019



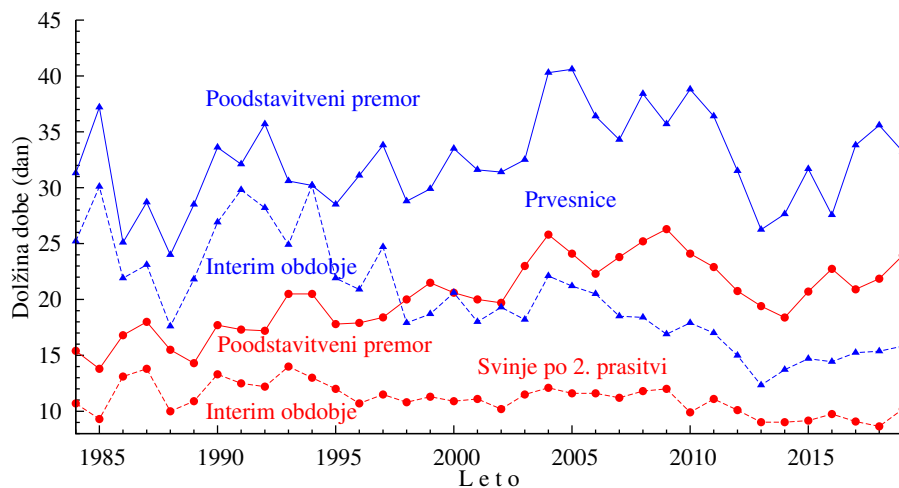
Slika 3.18: Število živorojenih in odstavljenih pujskov na gnezdo pri mladících in starih svinjäh na kmetijäh v Sloveniji po letih



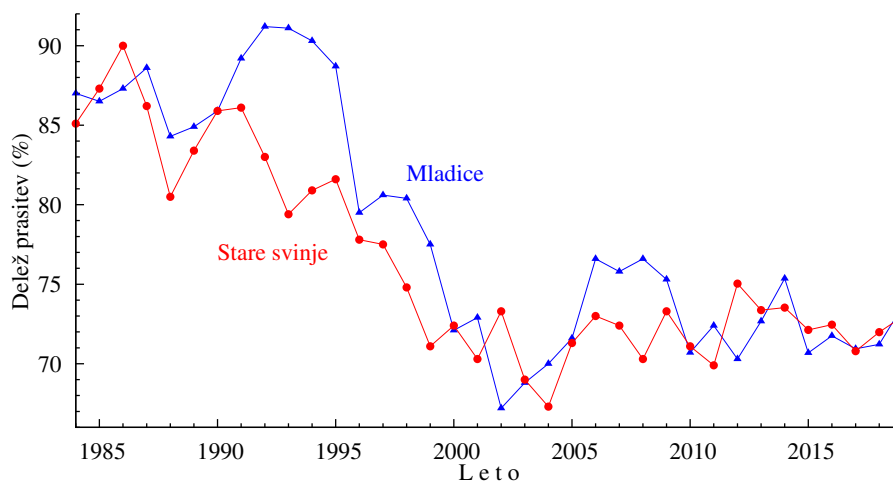
Slika 3.19: Dolžina uspešnega reprodukcijskega ciklusa pri mladících in starih svinjäh na kmetijäh v Sloveniji po letih



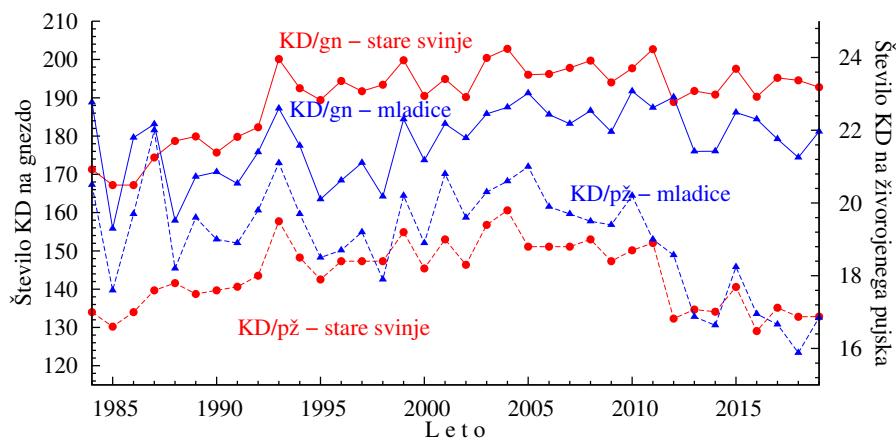
Slika 3.20: Dolžina neuspešnega reprodukcijskega ciklusa na kmetijäh v Sloveniji po letih



Slika 3.21: Dolžina poodstavitvenega premora in interim obdobja pri prvesnicah in svinjah po 2. pravitvi na kmetijah v Sloveniji po letih



Slika 3.22: Delež prasitev pri mladiceh in starih svinjah na kmetijah v Sloveniji po letih



Slika 3.23: Število krmnih dni na gnezdo pri mladiceh (KD/gn - mladice) in starih svinjah (KD/gn - stare svinje) ter na živorojenega pujska pri mladiceh (KD/pž - mladice) in starih svinjah (KD/pž - stare svinje) na kmetijah v Sloveniji po letih