



Univerza v Ljubljani, Biotehniška fakulteta
Oddelek za zootehniko
Groblje 3, 1230 DOMŽALE
Tel: +386 (0)1 320 3920
URL: <http://agri.bf.uni-lj.si/Enota>



PLODNOST SVINJ

PASME KRŠKOPOLJSKI PRAŠIČ

ZA PRVO POLLETJE 2021

Dokument št. 16-1/2022

VODENJE REPRODUKCIJE NA ZAVODIH:

Mag. Andrej KASTELIC

OBDELAVA IN OCENA REZULTATOV:

Prof. dr. Milena KOVAČ
Doc. dr. Špela MALOVRH
Asist. Anita ULE, mag. inž. zoot.
Suzana KRHLANKO, dipl. inž. kmet. zoot.
Karmen LOŽAR, dipl. inž. zoot.
Irena ULE
Stanka PAVLIN

DOMŽALE, april 2022

Kazalo

1 Primerjava plodnosti na kmetijah v letu 2021	7
1.1 Velikost gnezda	7
1.2 Analiza pripustov	9
1.3 Analiza reprodukcijskega ciklusa	15
1.4 Analiza izločitev	27
2 Kmetije skupaj po letih	29
2.1 Velikost gnezda	29
2.2 Analiza pripustov	29
2.3 Analiza reprodukcijskega ciklusa	31
2.4 Analiza izločitev	34
3 Grafični prikaz rezultatov plodnosti	35
3.1 Plodnost mladic od 1.7.2020 do 30.6.2021	35
3.2 Plodnost starih svinj od 1.7.2020 do 30.6.2021	37
3.3 Plodnost svinj skupaj od 1.7.2020 do 30.6.2021	39
3.4 Spremembe rezultatov plodnosti po letih	41
3.4.1 Plodnost mladic	41
3.4.2 Plodnost starih svinj	43
3.4.3 Plodnost svinj skupaj	45
3.4.4 Starostna struktura črede	48

Slike

3.1	Število živorojenih pujskov pri mladicah na kmetijah v izbranem obdobju	35
3.2	Delež mrtvorjenih pujskov pri mladicah na kmetijah v izbranem obdobju	35
3.3	Število živorojenih pujskov na gnezdo in starost mladic ob praritvi na kmetijah v izbranem obdobju	36
3.4	Število krmnih dni na živorojenega pujska in starost mladic ob praritvi na kmetijah v izbranem obdobju	36
3.5	Dolžina neproduktivnih faz na gnezdo pri mladicah na kmetijah v izbranem obdobju	36
3.6	Število živorojenih pujskov pri starih svinjah na kmetijah v izbranem obdobju	37
3.7	Delež mrtvorjenih pujskov pri starih svinjah na kmetijah v izbranem obdobju	37
3.8	Število živorojenih pujskov na gnezdo in doba med praritvama na kmetijah v izbranem obdobju .	37
3.9	Število krmnih dni na živorojenega pujska in doba med praritvama na kmetijah v izbranem obdobju	38
3.10	Dolžina podstavitenega premora in število živorojenih pujskov pri starih svinjah na kmetijah v izbranem obdobju	38
3.11	Dolžina neproduktivnih faz pri starih svinjah na kmetijah v izbranem obdobju	38
3.12	Velikost gnezda na kmetijah v izbranem obdobju	39
3.13	Delež izgubljenih pujskov na kmetijah v izbranem obdobju	39
3.14	Delež pregonitev in doba od pripusta do pregonitve na kmetijah v izbranem obdobju	39
3.15	Porazdelitev dolžine brejosti na kmetijah v izbranem obdobju v primerjavi s standardi	40
3.16	Dodatni stroški neproduktivnih faz na gnezdo v EUR na kmetijah v izbranem obdobju	40
3.17	Število živorojenih pujskov pri mladicah po letih	41
3.18	Starost mladic ob praritvi po letih	41
3.19	Starost mladic ob izločitvi po letih	41
3.20	Delež izločenih mladic pred (prazni znaki) in po (obarvani del) pripustih ter skupaj (polni znaki) po letih	42
3.21	Število krmnih dni na živorojenega pujska pri mladicah po letih	42
3.22	Dolžina neproduktivnih faz pri mladicah po letih	42
3.23	Število živorojenih pujskov pri starih svinjah po letih	43
3.24	Dolžina interim obdobja pri starih svinjah po letih	43
3.25	Delež izločenih starih svinj po letih	43
3.26	Doba od praritve do izločitve pri starih svinjah po letih	44
3.27	Število krmnih dni na živorojenega pujska pri starih svinjah po letih	44
3.28	Dolžina laktacije, podstavitenega premora (obarvani del) in servis periode pri starih svinjah po letih	44
3.29	Število odstavljenih pujskov na gnezdo po letih	45
3.30	Delež izgubljenih pujskov po letih	45
3.31	Število gnezd na svinjo letno po letih	45
3.32	Število živorojenih in odstavljenih pujskov na gnezdo pri mladicah in starih svinjah na kmetijah po letih	46

3.33 Dolžina uspešnega reprodukcijskega ciklusa pri mladica in starih svinjah na kmetijah po letih . . .	46
3.34 Dolžina neuspešnega reprodukcijskega ciklusa na kmetijah po letih	46
3.35 Dolžina poodstavitvenega premora in interim obdobja pri prvesnicah in svinjah po 2. pravitvi na kmetijah po letih	47
3.36 Delež prasitev pri mladica in starih svinjah na kmetijah po letih	47
3.37 Število krmnih dni na gnezdo pri mladica (KD/gn - mladice) in starih svinjah (KD/gn - stare svinje) ter na živorojenega pujska pri mladica (KD/pž - mladice) in starih svinjah (KD/pž - stare svinje) na kmetijah po letih	47
3.38 Starostna struktura črede po zaporedni pravitvi po letih	48
3.39 Število živorojenih pujskov in število krmnih dni na živorojenega pujska po zaporednih pravitvah v izbranem obdobju	48
3.40 Starostna struktura črede po zaporednih pravitvah v izbranem obdobju	48

Oznake

DOP	doba od odbire do prasiatve
DMP	doba med prasiatvama
IO	interim obdobje
PP	podstavitveni premor
DOI	doba od odbire do izločitve
DI	doba od prasiatve do izločitve
DPI	doba od pripusta do izločitve
DPP	doba od pripusta do pregonitve
kDMP	korigirana doba med prasiatvama
kDOP	korigirana doba od odbire do prasiatve
G_s	število gnezd na svinjo v proizvodnem obdobju
G_L	število gnezd na svinjo letno
$P_{\check{z}}$	število živorojenih pujskov
P_o	število odstavljenih pujskov
KD	krmni dnevi
PF	produktivne faze
št.	število
Sk.	skupaj
gn.	gnezdo
prip. (pr.)	pripust
pras.	prasiatev
Izl.	izločitev, izločenih
Usp.	uspešni
Lakt.	laktacija
Preg.	pregonitev

Šifrant izločitev

8	izostanek bukanja
9	nebreje-nepregonjene
10	večkratna pregonitev

Opombe: Za leto 2021 je upoštevana zadnja polovica leta 2020 in prva polovica leta 2021. Števila gnezd na svinjo v proizvodnem obdobju po kmetijah ne izpisujemo zaradi neenakomerne obnove (manjše črede).

Poglavje 1

Primerjava plodnosti na kmetijah v letu 2021

1.1 Velikost gnezda

Tabela 1.1: Velikost gnezda na kmetijah

Rejec	MLADICE			STARE SVINJE						SKUPAJ		
	Št. pras.	DOP (dni)	P _z /gn.	Št. pras.	DMP (dni)	Lakt. (dni)	IO (dni)	PP (dni)	P _z /gn.	Št. pras.	P _o /gn.	Izgube (%)
30098	0			1	151.0	31.0	7.0	7.0	7.00	1	7.00	
30143	1	288.0	7.00	2	203.0	47.5	41.5	41.5	12.50	3	10.67	
30468	0			5	184.4	48.2	14.0	30.3	5.00	5	3.20	36.0
40048	0			2	329.5	33.0	27.5	183.5	11.00	2	6.50	40.9
40056	0			1	154.0	37.0	2.0	2.0	10.00	1	8.00	20.0
40067	1	430.0	8.00	1	161.0	39.0	6.0	6.0	8.00	2	4.00	50.0
40086	26	175.0	7.08	38	167.9	39.3	15.6	15.6	8.58	64	4.84	39.2
40089	0			2	199.0	31.0	53.5	53.5	8.50	2	8.50	
40267	0			6	166.2	33.0	5.2	17.7	8.67	6	9.50	-9.6
40286	0			1	168.0	39.0	15.0	15.0	6.00	1	6.00	
40374	1	323.0	8.00	3	188.0	60.7	7.7	9.5	10.00	4	8.25	13.2
40394	12	250.8	7.75	13	181.2	44.2	24.1	24.1	7.38	25	5.04	33.3
40738	0			8	201.0	49.6	12.8	36.3	7.25	8	6.38	12.1
40741	1	157.0	10.00	0						1		99.0
40962	11	416.7	8.00	10	314.6	64.3	136.0	136.0	7.10	21	7.05	6.9
31735	3	392.3	10.00	16	171.1	44.2	11.9	11.9	12.63	19	9.32	23.7
31801	6	199.3	6.67	7	162.9	35.6	12.7	12.7	10.86	13	7.31	18.1
41035	0			1	447.0	62.0	272.0	272.0	7.00	1	7.00	
41132	3	187.0	10.33	11	188.8	59.5	13.7	13.7	7.82	14	8.00	4.3
41450	5	313.4	7.20	5	204.8	68.2	23.6	23.6	7.00	10	5.90	16.9
41653	4	262.0	8.50	1	191.0	69.0	9.0	9.0	10.00	5	5.40	38.6
41771	1	424.0	10.00	1	165.0	44.0	5.0	5.0	12.00	2	9.00	18.2
41789	2	198.5	9.50	4	157.0	35.3	5.8	5.8	9.75	6	8.33	13.8
41802	0			2	158.0	45.0			6.50	2	1.50	76.9
41825	6	373.5	8.67	1	321.0	72.0	136.0	136.0	4.00	7	6.57	17.9
32002	1	274.0	10.00	1	156.0	36.0	5.0	5.0	11.00	2	4.00	61.9
32021	0			1	177.0	47.0	15.0	15.0	13.00	1	12.00	7.7
32031	3	216.3	7.67	34	185.0	50.4	19.1	20.2	10.79	37	8.95	15.1
32126	0			1	155.0	31.0	11.0	11.0	8.00	1	6.00	25.0
32142	1	181.0	5.00	3	268.0	39.3	6.0	115.0	9.00	4	5.25	34.4
32204	2	406.0	5.50	3	239.0	59.0	68.7	82.5	8.00	5	6.60	5.7
32248	2	176.5	8.00	9	165.1	38.1	12.8	12.8	9.89	11	9.45	1.0
32298	0			1	322.0	31.0	6.0	178.0	6.00	1	6.00	
32361	1	103.0	9.00	3	158.7	38.7	5.0	5.0	12.00	4	9.50	15.6
32399	3	218.7	10.67	14	197.4	56.9	16.0	25.5	11.29	17	7.41	33.7
32428	0			2	180.0	58.0	8.0	8.0	12.50	2	12.00	4.0
32504	0			12	165.8	42.0	5.8	7.4	10.92	12	9.92	9.2
32531	0			1	219.0	57.0	47.0	47.0	7.00	1	7.00	
32532	0			7	204.3	46.7	42.6	42.6	10.86	7	9.57	11.8
32626	10	251.7	8.30	17	202.6	49.9	34.1	37.2	9.41	27	8.19	9.1
32674	2	551.5	9.50	3	235.0	40.0	82.0	82.0	11.33	5	10.00	5.7
32692	2	196.5	9.00	4	171.3	45.8	10.8	10.8	13.25	6	8.00	32.4

Rejec	MLADICE			STARE SVINJE						SKUPAJ		
	Št. pras.	DOP (dni)	P _z /gn.	Št. pras.	DMP (dni)	Lakt. (dni)	IO (dni)	PP (dni)	P _z /gn.	Št. pras.	P _o /gn.	Izgube (%)
32750	0			4	172.0	42.8	8.8	12.8	7.25	4	4.75	34.5
32775	1	172.0	11.00	3	156.0	34.0	6.0	6.0	9.00	4	8.25	13.2
32797	0			4	200.8	54.0	35.3	43.7	7.75	4	7.75	
32812	0			1	364.0	60.0	187.0	187.0	15.00	1	8.00	46.7
32814	0			2	188.0	52.0	23.0	23.0	10.00	2	8.00	20.0
32834	3	128.7	6.00	5	193.0	50.2	29.8	29.8	7.80	8	5.25	26.3
32876	1	449.0	9.00	0						1		99.0
32926	0			1	287.0	36.0	5.0	133.0	13.00	1	13.00	
32934	4	391.8	6.00	4	171.3	49.8	5.0	5.0	10.25	8	7.50	7.7
32977	1	244.0	8.00	1	193.0	67.0	9.0	9.0	12.00	2	10.00	
33014	0			5	170.0	45.0	9.0	9.0	7.80	5	7.20	7.7
33183	0			6	160.7	35.2	9.3	9.3	11.00	6	10.00	9.1
33354	8	226.5	7.63	35	175.4	46.7	8.0	13.9	10.94	43	7.81	24.3
33374	3	170.3	7.67	2	220.5	62.5	21.5	42.5	11.50	5	6.80	26.1
33494	0			4	190.0	56.0	21.8	27.7	11.75	4	6.75	42.6
33512	2	246.5	9.50	4	165.5	32.5	18.0	18.0	10.50	6	6.00	41.0
33531	3	277.3	8.33	2	156.5	45.5	-3.0	-3.0	10.50	5	9.20	
33564	0			16	234.8	56.9	64.8	64.8	9.88	16	6.31	36.1
33610	0			6	181.8	49.8	13.2	16.7	11.17	6	9.50	14.9
33618	0			1	257.0	63.0	80.0	80.0	11.00	1	11.00	
33637	0			5	183.2	58.8	10.6	10.6	10.40	5	6.00	42.3
33675	3	189.0	9.33	1	222.0	48.0	59.0	59.0	11.00	4	6.75	30.8
33691	1	626.0	5.00	0						1	5.00	
33711	4	225.0	10.00	10	170.4	38.4	12.6	14.9	10.10	14	8.64	14.2
33725	3	257.3	7.00	13	168.9	40.2	14.4	14.4	10.92	16	7.81	23.3
33745	0			1	297.0	35.0	149.0	149.0	12.00	1		99.0
33883	2	286.5	11.00	2	177.5	58.5	6.0	6.0	11.50	4	9.25	17.8
33887	1	229.0	12.00	1	292.0	31.0	146.0	146.0	13.00	2	10.50	16.0
34034	0			5	180.8	29.2	28.2	31.5	9.20	5	7.40	19.6
34051	0			2	198.0	57.5	8.5	23.5	11.00	2	8.00	27.3
34060	0			3	231.3	99.0	11.0	11.0	9.33	3	6.33	32.1
34086	0			2	162.0	44.0	4.5	4.5	11.00	2	10.50	4.5
34091	1	325.0	13.00	4	210.3	58.3	18.8	37.0	7.00	5	7.20	12.2
35099	6	361.2	5.50	15	215.6	53.0	49.7	49.7	7.27	21	3.48	48.6
35103	0			8	210.9	59.1	38.9	38.9	10.13	8	9.50	6.2
35111	2	255.5	7.50	2	216.5	37.5	35.5	63.5	13.50	4	9.50	9.5
35140	3	507.0	6.33	4	321.0	51.3	156.8	156.8	8.50	7	2.57	66.0
35155	0			2	204.5	51.5	29.0	39.5	10.00	2	5.50	45.0
35159	1	632.0	1.00	0						1	1.00	
35179	1	265.0	7.00	1	156.0	54.0	-11.0	-11.0	9.00	2		99.0
37046	3	234.7	7.33	4	151.0	23.8	12.3	12.3	8.50	7	4.71	41.1
37063	0			2	218.0	51.0	52.5	52.5	14.00	2	11.50	17.9
37096	2	200.5	12.00	10	180.4	49.0	5.3	17.6	9.70	12	5.50	45.5
37100	2	468.5	7.50	1	206.0	30.0	63.0	63.0	10.00	3	6.33	24.0
37170	0			2	181.5	41.5	12.5	22.0	11.00	2	5.00	54.5
37201	0			1	492.0	70.0	309.0	309.0	10.00	1	10.00	
37204	0			4	416.5	62.3	238.5	238.5	4.50	4	3.00	33.3
37241	0			4	205.3	68.3	22.5	22.5	9.25	4	8.25	10.8
37298	1	249.0	4.00	0						1		99.0
37315	1	185.0	9.00	2	161.5	51.5	-3.0	-3.0	12.00	3	9.67	12.1
37328	0			1	181.0	61.0	7.0	7.0	10.00	1	10.00	
37342	0			2	155.0	36.0	4.5	4.5	13.00	2	12.00	7.7
Skupaj	173	271.8	7.88	479	194.3	47.9	27.5	32.2	9.71	652	7.08	23.3

1.2 Analiza pripustov

Tabela 1.2: Analiza pripustov mladic na kmetijah

Rejec	S K U P A J							PRVI PRIPUST				DRUGI IN VIŠJI			
	Št. prip.	Usp. prip. (%)	Izl. po prip. (%)	Preg. (%)	DPI (dni)	DPP (dni)	P _z / prip.	Št. prip.	Prvi (%)	Usp. (%)	P _z / prip.	Št. prip.	≥2 (%)	Usp. (%)	P _z / prip.
30098	0							0				0			
30143	1	100.0					7.0	1	100.0	100.0	7.0	0			
30468	0							0				0			
40048	0							0				0			
40056	0							0				0			
40067	1	100.0					8.0	1	100.0	100.0	8.0	0			
40086	26	100.0					7.1	26	100.0	100.0	7.1	0			
40089	0							0				0			
40267	0							0				0			
40286	0							0				0			
40374	2	50.0					4.0	2	100.0	50.0	4.0	0			
40394	12	100.0					7.8	12	100.0	100.0	7.8	0			
40738	0							0				0			
40834	0							0				0			
40962	11	100.0					8.0	11	100.0	100.0	8.0	0			
31735	3	100.0					10.0	3	100.0	100.0	10.0	0			
31801	6	100.0					6.7	6	100.0	100.0	6.7	0			
41035	0							0				0			
41132	7	42.9	14.3	42.9	138.0	96.3	4.4	5	71.4	40.0	4.6	2	28.6	50.0	4.0
41450	5	100.0					7.2	5	100.0	100.0	7.2	0			
41653	4	100.0					8.5	4	100.0	100.0	8.5	0			
41771	1	100.0					10.0	1	100.0	100.0	10.0	0			
41789	2	100.0					9.5	2	100.0	100.0	9.5	0			
41802	0							0				0			
41825	7	100.0					8.6	7	100.0	100.0	8.6	0			
41838	0							0				0			
32002	1	100.0					10.0	1	100.0	100.0	10.0	0			
32021	0							0				0			
32031	6	50.0		50.0		18.3	3.8	3	50.0	66.7	4.7	3	50.0	33.3	3.0
32126	0							0				0			
32142	1	100.0					5.0	1	100.0	100.0	5.0	0			
32204	2	100.0					5.5	2	100.0	100.0	5.5	0			
32248	2	100.0					8.0	2	100.0	100.0	8.0	0			
32298	0							0				0			
32361	1	100.0					9.0	1	100.0	100.0	9.0	0			
32399	3	100.0					10.7	3	100.0	100.0	10.7	0			
32428	0							0				0			
32504	0							0				0			
32531	0							0				0			
32532	1		100.0		282.0			1	100.0			0			
32626	12	100.0					8.4	12	100.0	100.0	8.4	0			
32674	2	100.0					9.5	2	100.0	100.0	9.5	0			
32692	3	66.7					6.0	2	66.7	50.0	4.5	1	33.3	100.0	9.0
32713	0							0				0			
32750	0							0				0			
32775	1	100.0					11.0	1	100.0	100.0	11.0	0			
32797	0							0				0			
32812	0							0				0			
32814	0							0				0			
32834	3	100.0					6.0	3	100.0	100.0	6.0	0			

Rejec	S K U P A J							PRVI PRIPUST				DRUGI IN VIŠJI			
	Št. prip.	Usp. prip. (%)	Izl. po prip. (%)	Preg. (%)	DPI (dni)	DPP (dni)	P _z / prip.	Št. prip.	Prvi (%)	Usp. (%)	P _z / prip.	Št. prip.	≥2 (%)	Usp. (%)	P _z / prip.
32876	1	100.0					9.0	1	100.0	100.0	9.0	0			
32922	0							0				0			
32926	0							0				0			
32934	4	100.0					6.0	4	100.0	100.0	6.0	0			
32977	1	100.0					8.0	1	100.0	100.0	8.0	0			
33014	0							0				0			
33183	0							0				0			
33354	10	100.0					7.7	10	100.0	100.0	7.7	0			
33374	3	100.0					7.7	3	100.0	100.0	7.7	0			
33494	0							0				0			
33512	2	100.0					9.5	2	100.0	100.0	9.5	0			
33531	3	100.0					8.3	3	100.0	100.0	8.3	0			
33564	0							0				0			
33610	0							0				0			
33618	0							0				0			
33637	0							0				0			
33675	3	100.0					9.3	3	100.0	100.0	9.3	0			
33691	1	100.0					5.0	1	100.0	100.0	5.0	0			
33710	0							0				0			
33711	5	80.0		20.0		18.0	8.0	4	80.0	75.0	7.8	1	20.0	100.0	9.0
33725	4	75.0	25.0		207.0		5.3	4	100.0	75.0	5.3	0			
33745	0							0				0			
33883	2	100.0					11.0	2	100.0	100.0	11.0	0			
33887	0							0				0			
34034	1		100.0		166.0			0	0.0			1	100.0		
34051	0							0				0			
34060	1							1	100.0			0			
34086	0							0				0			
34091	2	50.0		50.0		67.0	6.5	1	50.0			1	50.0	100.0	13.0
35099	7	100.0					6.0	7	100.0	100.0	6.0	0			
35103	0							0				0			
35111	2	100.0					7.5	1	50.0	100.0	4.0	1	50.0	100.0	11.0
35140	3	100.0					6.3	3	100.0	100.0	6.3	0			
35151	0							0				0			
35155	0							0				0			
35159	1	100.0					1.0	1	100.0	100.0	1.0	0			
37046	3	100.0					7.3	3	100.0	100.0	7.3	0			
37063	1	100.0						1	100.0	100.0		0			
37096	3	100.0					12.0	3	100.0	100.0	12.0	0			
37100	2	100.0					7.5	2	100.0	100.0	7.5	0			
37170	0							0				0			
37201	0							0				0			
37204	0							0				0			
37241	0							0				0			
37298	3	33.3					1.3	3	100.0	33.3	1.3	0			
37315	0							0				0			
37328	0							0				0			
37342	0							0				0			
Skupaj	194	91.2	2.1	4.1	198.3	53.6	7.2	184	94.9	92.9	7.3	10	5.2	60.0	5.9

Tabela 1.3: Analiza pripustov starih svinj na kmetijah

Rejec	S K U P A J							PRVI PRIPUST				DRUGI IN VIŠJI			
	Št. prip.	Usp. prip. (%)	Izl. po prip. (%)	Preg. (%)	DPI (dni)	DPP (dni)	P _ž / prip.	Št. prip.	Prvi (%)	Usp. (%)	P _ž / prip.	Št. prip.	≥2 (%)	Usp. (%)	P _ž / prip.
30098	1	100.0					7.0	1	100.0	100.0	7.0	0			
30143	2	100.0					12.5	2	100.0	100.0	12.5	0			
30468	6	66.7		16.7		55.0	4.2	5	83.3	60.0	3.8	1	16.7	100.0	6.0
40048	2	100.0					11.0	1	50.0	100.0	14.0	1	50.0	100.0	8.0
40056	1	100.0					10.0	1	100.0	100.0	10.0	0			
40067	1	100.0					8.0	1	100.0	100.0	8.0	0			
40086	38	100.0					8.6	38	100.0	100.0	8.6	0			
40089	2	100.0					8.5	2	100.0	100.0	8.5	0			
40267	8	75.0		25.0		37.5	6.5	6	75.0	66.7	6.0	2	25.0	100.0	8.0
40286	1	100.0					6.0	1	100.0	100.0	6.0	0			
40374	3	100.0					10.0	3	100.0	100.0	10.0	0			
40394	13	100.0					7.4	13	100.0	100.0	7.4	0			
40738	9	88.9		11.1		188.0	6.4	8	88.9	87.5	6.9	1	11.1	100.0	3.0
40834	1	0.0						1	100.0			0			
40962	11	90.9	9.1		132.0		6.5	11	100.0	90.9	6.5	0			
31735	16	100.0					12.6	16	100.0	100.0	12.6	0			
31801	7	100.0					10.9	7	100.0	100.0	10.9	0			
41035	1	100.0					7.0	1	100.0	100.0	7.0	0			
41132	11	90.9	9.1		250.0		6.9	11	100.0	90.9	6.9	0			
41450	5	100.0					7.0	5	100.0	100.0	7.0	0			
41653	1	100.0					10.0	1	100.0	100.0	10.0	0			
41771	1	100.0					12.0	1	100.0	100.0	12.0	0			
41789	7	85.7	14.3		12.0		9.3	7	100.0	85.7	9.3	0			
41802	2	100.0					6.5	2	100.0	100.0	6.5	0			
41825	2	100.0					6.5	2	100.0	100.0	6.5	0			
41838	1	0.0						1	100.0			0			
32002	3	100.0					11.7	2	66.7	100.0	12.0	1	33.3	100.0	11.0
32021	1	100.0					13.0	1	100.0	100.0	13.0	0			
32031	36	91.7	2.8	5.6	64.0	19.0	9.9	33	91.7	93.9	10.3	3	8.3	66.7	5.7
32126	1	100.0					8.0	1	100.0	100.0	8.0	0			
32142	5	80.0		20.0		24.0	5.4	3	60.0	66.7	3.0	2	40.0	100.0	9.0
32204	3	66.7					6.7	3	100.0	66.7	6.7	0			
32248	7	100.0					10.0	7	100.0	100.0	10.0	0			
32298	3	33.3		33.3		172.0	2.0	2	66.7			1	33.3	100.0	6.0
32361	3	100.0					12.0	3	100.0	100.0	12.0	0			
32399	16	81.3		18.8		44.3	9.3	13	81.3	84.6	9.2	3	18.8	66.7	9.3
32428	2	100.0					12.5	2	100.0	100.0	12.5	0			
32504	15	80.0	6.7	13.3	116.0	8.5	8.7	13	86.7	76.9	7.9	2	13.3	100.0	14.5
32531	1	100.0					7.0	1	100.0	100.0	7.0	0			
32532	7	100.0					10.9	7	100.0	100.0	10.9	0			
32626	21	85.7	4.8	9.5	218.0	26.0	8.1	19	90.5	84.2	8.0	2	9.5	100.0	9.0
32674	3	100.0					11.3	3	100.0	100.0	11.3	0			
32692	4	100.0					13.3	4	100.0	100.0	13.3	0			
32713	2	0.0	50.0	50.0	218.0	85.0		1	50.0			1	50.0		
32750	5	80.0		20.0		16.0	5.8	4	80.0	75.0	4.8	1	20.0	100.0	10.0
32775	3	100.0					9.0	3	100.0	100.0	9.0	0			
32797	4	100.0					7.8	4	100.0	100.0	7.8	0			
32812	1	100.0					15.0	1	100.0	100.0	15.0	0			
32814	3	66.7	33.3		252.0		6.7	3	100.0	66.7	6.7	0			
32834	4	100.0					8.8	4	100.0	100.0	8.8	0			
32876	0	0.0						0				0			
32922	2	0.0						2	100.0			0			

Rejec	S K U P A J							PRVI PRIPUST				DRUGI IN VIŠJI			
	Št. prip.	Usp. prip. (%)	Izl. po prip. (%)	Preg. (%)	DPI (dni)	DPP (dni)	P ₂ / prip.	Št. prip.	Prvi (%)	Usp. (%)	P ₂ / prip.	Št. prip.	≥2 (%)	Usp. (%)	P ₂ / prip.
32926	2	50.0		50.0		128.0	6.5	1	50.0			1	50.0	100.0	13.0
32934	4	100.0					10.3	4	100.0	100.0	10.3	0			
32977	1	100.0					12.0	1	100.0	100.0	12.0	0			
33014	5	100.0					7.8	5	100.0	100.0	7.8	0			
33183	6	100.0					11.0	6	100.0	100.0	11.0	0			
33354	36	91.7		8.3		68.7	10.1	33	91.7	93.9	10.5	3	8.3	66.7	6.0
33374	3	66.7		33.3		42.0	7.7	2	66.7	50.0	5.5	1	33.3	100.0	12.0
33494	4	100.0					11.5	3	75.0	100.0	12.3	1	25.0	100.0	9.0
33512	4	100.0					10.5	4	100.0	100.0	10.5	0			
33531	2	100.0					10.5	2	100.0	100.0	10.5	0			
33564	16	100.0					9.9	16	100.0	100.0	9.9	0			
33610	7	85.7		14.3		21.0	9.6	6	85.7	83.3	8.8	1	14.3	100.0	14.0
33618	1	100.0					11.0	1	100.0	100.0	11.0	0			
33637	5	100.0					10.4	5	100.0	100.0	10.4	0			
33675	3	100.0					10.7	3	100.0	100.0	10.7	0			
33691	0	0.0						0				0			
33710	1	100.0					0.0	1	100.0	100.0	0.0	0			
33711	12	83.3		16.7		11.5	8.4	10	83.3	80.0	8.7	2	16.7	100.0	7.0
33725	13	100.0					10.9	13	100.0	100.0	10.9	0			
33745	1	100.0					12.0	1	100.0	100.0	12.0	0			
33883	1	100.0					9.0	1	100.0	100.0	9.0	0			
33887	1	100.0					13.0	1	100.0	100.0	13.0	0			
34034	7	71.4		14.3		31.0	6.6	6	85.7	66.7	6.3	1	14.3	100.0	8.0
34051	3	66.7		33.3		30.0	7.3	2	66.7	50.0	4.5	1	33.3	100.0	13.0
34060	3	100.0					9.3	3	100.0	100.0	9.3	0			
34086	2	100.0					11.0	2	100.0	100.0	11.0	0			
34091	5	80.0		20.0		73.0	5.6	4	80.0	75.0	5.3	1	20.0	100.0	7.0
35099	16	100.0					7.1	16	100.0	100.0	7.1	0			
35103	8	100.0					10.1	8	100.0	100.0	10.1	0			
35111	4	50.0		25.0		56.0	6.8	2	50.0	50.0	8.0	2	50.0	50.0	5.5
35140	5	100.0					7.8	5	100.0	100.0	7.8	0			
35151	1	0.0	100.0		157.0			1	100.0			0			
35155	3	66.7		33.3		21.0	6.7	2	66.7	50.0	4.5	1	33.3	100.0	11.0
35159	0	0.0						0				0			
37046	5	80.0					6.8	5	100.0	80.0	6.8	0			
37063	2	100.0					14.0	2	100.0	100.0	14.0	0			
37096	14	71.4	14.3	14.3	75.5	42.5	6.9	11	78.6	63.6	6.1	3	21.4	100.0	10.0
37100	1	100.0					10.0	1	100.0	100.0	10.0	0			
37170	3	66.7		33.3		19.0	7.3	2	66.7	50.0	6.0	1	33.3	100.0	10.0
37201	1	100.0					10.0	1	100.0	100.0	10.0	0			
37204	4	100.0					4.5	4	100.0	100.0	4.5	0			
37241	4	100.0					9.3	4	100.0	100.0	9.3	0			
37298	0	0.0						0				0			
37315	1	100.0					12.0	1	100.0	100.0	12.0	0			
37328	1	100.0					10.0	1	100.0	100.0	10.0	0			
37342	2	0.0		50.0		200.0		2	100.0			0			
Skupaj	531	88.5	2.1	6.4	142.7	52.7	8.7	491	92.5	89.6	8.7	40	7.5	87.5	8.5

Tabela 1.4: Distribucija pregonitev na kmetijah

Rejec	MLADICE					STARE SVINJE				
	Št. preg.	DPP (dni)	do 25. dne (%)	25-40 dni (%)	po 40. dnevu (%)	Št. preg.	DPP (dni)	do 25. dne (%)	25-40 dni (%)	po 40. dnevu (%)
30098	0					0				
30143	0					0				
30468	0					1	55.0	0.0	0.0	100.0
40048	0					0				
40056	0					0				
40067	0					0				
40086	0					0				
40089	0					0				
40267	0					2	37.5	50.0	0.0	50.0
40286	0					0				
40374	0					0				
40394	0					0				
40738	0					1	188.0	0.0	0.0	100.0
40834	0					0				
40962	0					0				
31735	0					0				
31801	0					0				
41035	0					0				
41132	3	96.3	0.0	0.0	100.0	0				
41450	0					0				
41653	0					0				
41771	0					0				
41789	0					0				
41802	0					0				
41825	0					0				
41838	0					0				
32002	0					0				
32021	0					0				
32031	3	18.3	100.0	0.0	0.0	2	19.0	100.0	0.0	0.0
32126	0					0				
32142	0					1	24.0	100.0	0.0	0.0
32204	0					0				
32248	0					0				
32298	0					1	172.0	0.0	0.0	100.0
32361	0					0				
32399	0					3	44.3	33.3	0.0	66.7
32428	0					0				
32504	0					2	8.5	100.0	0.0	0.0
32531	0					0				
32532	0					0				
32626	0					2	26.0	50.0	50.0	0.0
32674	0					0				
32692	0					0				
32713	0					1	85.0	0.0	0.0	100.0
32750	0					1	16.0	100.0	0.0	0.0
32775	0					0				
32797	0					0				
32812	0					0				
32814	0					0				
32834	0					0				
32876	0					0				
32922	0					0				

Rejec	MLADICE					STARE SVINJE				
	Št. preg.	DPP (dni)	do 25. dne (%)	25-40 dni (%)	po 40. dnevu (%)	Št. preg.	DPP (dni)	do 25. dne (%)	25-40 dni (%)	po 40. dnevu (%)
32926	0					1	128.0	0.0	0.0	100.0
32934	0					0				
32977	0					0				
33014	0					0				
33183	0					0				
33354	0					3	68.7	33.3	0.0	66.7
33374	0					1	42.0	0.0	0.0	100.0
33494	0					0				
33512	0					0				
33531	0					0				
33564	0					0				
33610	0					1	21.0	100.0	0.0	0.0
33618	0					0				
33637	0					0				
33675	0					0				
33691	0					0				
33710	0					0				
33711	1	18.0	100.0	0.0	0.0	2	11.5	100.0	0.0	0.0
33725	0					0				
33745	0					0				
33883	0					0				
33887	0					0				
34034	0					1	31.0	0.0	100.0	0.0
34051	0					1	30.0	0.0	100.0	0.0
34060	0					0				
34086	0					0				
34091	1	67.0	0.0	0.0	100.0	1	73.0	0.0	0.0	100.0
35099	0					0				
35103	0					0				
35111	0					1	56.0	0.0	0.0	100.0
35140	0					0				
35151	0					0				
35155	0					1	21.0	100.0	0.0	0.0
35159	0					0				
37046	0					0				
37063	0					0				
37096	0					2	42.5	50.0	0.0	50.0
37100	0					0				
37170	0					1	19.0	100.0	0.0	0.0
37201	0					0				
37204	0					0				
37241	0					0				
37298	0					0				
37315	0					0				
37328	0					0				
37342	0					1	200.0	0.0	0.0	100.0
Skupaj	8	53.6	50.0	0.0	50.0	34	52.7	47.1	8.8	44.1

1.3 Analiza reprodukcijskega ciklusa

Tabela 1.5: Starost mladic ob pravitvi in število krmnih dni na živorojenega pujska pri mladicah na kmetijah

Rejec	Št. pras.	Starost ob		do 360 dni (%)	361-420 dni (%)	≥421 dni (%)	Izl. (%)	pred prip. (%)	po	Starost ob izl.	kDOP (dni)	KD/ P_z
		1.prip.	pras.									
30098	0											
30143	1	376.0	488.0			100.0					288.0	41.1
30468	0											
40048	2	384.5	507.0			100.0					307.0	43.9
40056	0											
40067	0											
40078	0											
40086	50	281.5	394.7	40.0	28.0	32.0					194.7	30.1
40089	1	418.0	531.0			100.0					331.0	33.1
40267	0											
40286	0											
40302	0											
40374	0											
40394	10	310.1	423.2	20.0	40.0	40.0					223.2	29.8
40733	4	342.0	455.0	0.0	25.0	75.0					255.0	31.9
40738	0											
40741	1	242.0	357.0	100.0	0.0	0.0					157.0	15.7
40962	0											
31509	0											
31735	2	170.5	285.0	100.0	0.0	0.0					85.0	9.0
31801	6	284.5	399.3	33.3	16.7	50.0					199.3	29.9
41132	3	285.0	426.3	0.0	66.7	33.3	25.0		100.0	443.0	307.3	40.1
41450	2	283.5	396.5	50.0	0.0	50.0					196.5	39.3
41653	4	350.5	462.0	0.0	25.0	75.0					262.0	30.8
41771	0											
41789	2	282.5	398.5		100.0						198.5	20.9
41802	0											
41825	0											
41838	0											
32002	1	358.0	474.0			100.0	66.7	100.0		479.0	832.0	83.2
32021	0											
32031	3	283.7	416.3	0.0	66.7	33.3					216.3	28.2
32126	2	222.0	336.0	100.0	0.0	0.0					136.0	17.0
32142	1	266.0	381.0		100.0						181.0	36.2
32204	2	491.0	606.0			100.0					406.0	73.8
32248	2	259.5	376.5		100.0						176.5	22.1
32298	0											
32361	4	333.5	448.5	25.0	0.0	75.0					248.5	33.1
32399	3	304.3	418.7	0.0	33.3	66.7					218.7	20.5
32428	0											
32504	0											
32531	0											
32532	0						100.0		100.0	532.0		
32626	8	285.8	400.4	50.0	12.5	37.5					200.4	23.2
32674	0											
32692	1	246.0	360.0	100.0	0.0	0.0					160.0	17.8
32750	0											
32775	1	259.0	372.0		100.0						172.0	15.6
32797	0											
32812	0											
32814	0											

Rejec	Št. pras.	Starost ob		do 360 dni (%)	361-420 dni (%)	≥421 dni (%)	Izl. (%)	pred prip. (%)	po prip. (%)	Starost ob izl.	kDOP (dni)	KD/ $P_{\bar{z}}$
32834	3	215.7	328.7	100.0	0.0	0.0					128.7	21.5
32926	0											
32934	0											
32977	1	335.0	444.0			100.0					244.0	30.5
33014	1	473.0	584.0			100.0					384.0	38.4
33183	0											
33354	8	326.4	440.0	25.0	0.0	75.0					224.6	28.1
33374	4	275.3	390.0	50.0	0.0	50.0					223.8	30.9
33494	0											
33512	0											
33531	1	331.0	444.0			100.0					244.0	30.5
33564	0											
33569	1	400.0	513.0			100.0					313.0	39.1
33610	0											
33618	0											
33637	0											
33675	3	276.0	389.0		100.0						189.0	20.3
33711	7	324.7	441.1	0.0	42.9	57.1					241.1	25.6
33725	2	306.5	421.0	0.0	50.0	50.0					221.0	27.6
33745	0											
33883	1	254.0	367.0		100.0						167.0	16.7
33887	1	316.0	429.0			100.0					229.0	19.1
33978	1	479.0	594.0			100.0					394.0	49.3
34034	1	329.0	446.0			100.0					224.8	37.5
34051	0											
34060	0											
34091	1	345.0	525.0			100.0					325.0	25.0
35099	11	356.5	469.5	0.0	18.2	81.8					269.5	39.5
35103	0											
35111	2	284.5	455.5			100.0					255.5	34.1
35140	0											
35151	0											
35155	0											
35179	1	352.0	465.0			100.0					265.0	37.9
37046	3	320.7	434.7	0.0	33.3	66.7					234.7	32.0
37063	0										184.0	
37096	2	287.5	400.5	0.0	50.0	50.0					210.3	17.5
37100	0											
37170	0											
37241	0											
37298	2	347.5	464.5			100.0					264.5	75.6
37315	1	270.0	385.0		100.0						185.0	20.6
37328	1	581.0	694.0			100.0					494.0	61.8
37342	0											
Skupaj	175	305.7	421.4	24.6	26.3	49.1	2.1	50.0	50.0	483.3	227.7	30.2

Tabela 1.6: Doba med prasiatvama in število krmnih dni na pujska na kmetijah

Rejec	Št. pras.	DMP (dni)	do 160 dni (%)	161-200 dni (%)	≥201 dni (%)	Izl. (%)	DI (dni)	kDMP (dni)	G_L	P_Z / leto	KD/ P_Z
30098	1	151.0	100.0	0.0	0.0	80.0	144.5	729.0	0.50	3.5	104.1
30143	2	203.0	0.0	50.0	50.0			203.0	1.80	22.5	16.2
30468	6	216.5	33.3	33.3	33.3			216.5	1.69	9.9	37.1
40048	1	194.0		100.0		75.0	145.3	630.0	0.58	8.1	45.0
40056	1	154.0	100.0	0.0	0.0	33.3	63.0	108.5	3.36	33.6	10.9
40067	1	161.0		100.0				161.0	2.27	18.2	20.1
40078	0					100.0	321.0				
40086	44	187.7	34.1	52.3	13.6	11.9	150.6	215.1	1.70	14.4	25.4
40089	2	199.0	0.0	50.0	50.0			199.0	1.83	15.6	23.4
40267	6	166.2	66.7	33.3	0.0			166.2	2.20	19.1	19.2
40286	1	168.0		100.0				168.0	2.17	13.0	28.0
40302	0					100.0	123.5				
40374	3	188.0		100.0				188.0	1.94	19.4	18.8
40394	14	182.6	14.3	71.4	14.3	3.9	168.0	194.6	1.88	14.1	26.0
40733	0										
40738	9	211.1	0.0	66.7	33.3			211.1	1.73	13.3	27.5
40741	0										
40962	7	243.6			100.0	35.0	303.4	547.0	0.67	3.9	93.4
31509	0					100.0	305.0				
31735	16	171.1	6.3	87.5	6.3			171.1	2.13	26.9	13.6
31801	7	162.9	71.4	28.6	0.0	27.3	193.7	245.9	1.48	16.1	22.7
41132	10	185.3	0.0	90.0	10.0	9.1	337.0	219.0	1.67	12.7	28.8
41450	5	204.8	20.0	40.0	40.0			204.8	1.78	12.5	29.3
41653	1	191.0		100.0		50.0	7.0	198.0	1.84	18.4	19.8
41771	1	165.0		100.0				165.0	2.21	26.5	13.8
41789	4	157.0	100.0	0.0	0.0			159.6	2.29	22.3	16.4
41802	2	158.0	100.0	0.0	0.0			158.0	2.31	15.0	24.3
41825	0					7.1	75.0				
41838	0					50.0	187.0				
32002	3	161.0	66.7	33.3	0.0	40.0	27.5	179.3	2.04	23.8	15.4
32021	1	177.0		100.0		50.0	152.0	329.0	1.11	14.4	25.3
32031	32	185.4	0.0	81.2	18.8	8.6	134.3	198.0	1.84	20.0	18.2
32126	1	155.0	100.0	0.0	0.0	33.3	196.0	175.5	2.08	16.6	21.9
32142	2	172.0		100.0		40.0	71.0	344.0	1.06	9.5	38.2
32204	2	222.0	0.0	50.0	50.0	33.3	23.0	233.5	1.56	11.7	31.1
32248	7	167.7	28.6	71.4	0.0	30.0	152.0	232.9	1.57	15.7	23.3
32298	1	322.0			100.0			322.0	1.13	6.8	53.7
32361	2	157.5	100.0	0.0	0.0	40.0	109.5	267.0	1.37	17.1	21.4
32399	14	197.4	0.0	78.6	21.4			197.4	1.85	20.9	17.5
32428	2	180.0		100.0				180.0	2.03	25.4	14.4
32504	12	165.8	8.3	91.7	0.0	14.3	126.5	186.9	1.95	21.3	17.1
32531	1	219.0			100.0			219.0	1.67	11.7	31.3
32532	6	192.0	16.7	50.0	33.3	25.0	218.5	264.8	1.38	14.7	24.8
32626	17	202.6	0.0	64.7	35.3	13.6	229.0	238.5	1.53	14.4	25.3
32674	3	296.7			100.0	33.3	49.5	329.7	1.11	11.1	33.0
32692	4	171.3	25.0	50.0	25.0	16.7	95.0	195.0	1.87	24.8	14.7
32750	4	172.0		100.0				172.0	2.12	15.4	23.7
32775	3	156.0	100.0	0.0	0.0			156.0	2.34	21.1	17.3
32797	4	229.5	0.0	75.0	25.0	20.0	248.0	291.5	1.25	9.4	38.9
32812	1	364.0			100.0			364.0	1.00	15.0	24.3
32814	2	188.0		100.0		33.3	280.0	328.0	1.11	11.1	32.8
32834	7	199.1	14.3	42.9	42.9	22.2	72.0	219.7	1.66	11.6	31.4
32926	1	287.0			100.0			287.0	1.27	16.5	22.1

Rejec	Št. pras.	DMP (dni)	do 160 dni (%)	161-200 dni (%)	≥201 dni (%)	Izl. (%)	DI (dni)	kDMP (dni)	G_L	$P_Z/$ leto	KD/ P_Z
32934	4	171.3	50.0	50.0	0.0			171.3	2.13	21.8	16.7
32977	1	193.0		100.0				193.0	1.89	22.7	16.1
33014	6	169.7	16.7	83.3	0.0	25.0	113.5	207.5	1.76	12.9	28.3
33183	6	160.7	66.7	33.3	0.0	12.5	153.0	159.6	2.29	25.2	14.5
33354	36	174.9	44.4	47.2	8.3	5.3	134.5	182.3	2.00	21.9	16.6
33374	3	228.0	0.0	66.7	33.3	57.1	174.8	461.0	0.79	7.9	46.1
33494	4	190.0	0.0	75.0	25.0			190.0	1.92	22.6	16.2
33512	3	164.7		100.0				164.7	2.22	22.9	15.9
33531	2	156.5	100.0	0.0	0.0	33.3	117.0	215.0	1.70	17.9	20.5
33564	15	206.6	0.0	66.7	33.3	11.8	167.0	228.9	1.59	15.9	22.9
33569	0					100.0	200.0				
33610	6	181.8		100.0		22.2	115.0	220.2	1.66	18.5	19.7
33618	0					100.0	266.0				
33637	5	183.2		100.0				183.2	1.99	20.7	17.6
33675	1	222.0			100.0			180.8	2.02	22.2	16.4
33711	10	170.4	10.0	70.0	20.0	16.7	65.5	183.5	1.99	20.1	18.2
33725	12	169.7	25.0	66.7	8.3	14.3	157.0	195.8	1.86	19.8	18.4
33745	1	297.0			100.0			297.0	1.23	14.8	24.8
33883	2	177.5		100.0		33.3	73.0	214.0	1.71	19.7	18.6
33887	1	292.0			100.0			292.0	1.25	16.3	22.5
33978	0										
34034	5	180.8	20.0	40.0	40.0	22.2	1.0	151.0	2.42	22.3	16.4
34051	2	198.0	0.0	50.0	50.0			198.0	1.84	20.2	18.0
34060	3	231.3			100.0			231.3	1.58	14.8	24.8
34091	4	210.3	0.0	50.0	50.0			210.3	1.74	12.2	30.0
35099	13	193.8	23.1	46.2	30.8	25.0	260.6	294.0	1.24	8.6	42.5
35103	8	210.9	0.0	75.0	25.0			210.9	1.73	17.5	20.8
35111	2	216.5			100.0			216.5	1.69	22.8	16.0
35140	2	155.0	50.0	50.0	0.0	60.0	187.7	436.5	0.84	8.8	41.6
35151	0					100.0	393.0				
35155	1	230.0			100.0			230.0	1.59	17.5	20.9
35179	0										
37046	3	151.0	100.0	0.0	0.0	42.9	99.7	250.7	1.46	13.6	26.9
37063	2	218.0	0.0	50.0	50.0			218.0	1.67	23.4	15.6
37096	9	186.1	11.1	66.7	22.2	21.4	161.0	239.8	1.52	14.7	24.8
37100	1	206.0			100.0			206.0	1.77	17.7	20.6
37170	2	181.5		100.0				181.5	2.01	22.1	16.5
37241	4	205.3	0.0	50.0	50.0			205.3	1.78	16.5	22.2
37298	0										
37315	0										
37328	1	181.0		100.0				181.0	2.02	20.2	18.1
37342	1	362.0			100.0			362.0	1.01	9.1	40.2
Skupaj	457	188.7	19.7	59.3	21.0	16.0	161.8	222.7	1.64	15.9	23.0

Tabela 1.7: Velikost gnezda ob rojstvu, gospodarnost priraje pujskov in delež letne obnove črede svinj na kmetijah

Rejec	Št. pras.	Št. izl.	$P_z/gn.$	$KD/gn.$	G_L	KD/P_z	Št. svinj v čredi	Remont (%)	G_S
30098	1	4	7.00	729.0	0.50	104.1			
30143	3	0	10.67	231.3	1.58	21.7			
30468	6	0	5.83	216.5	1.69	37.1			
40048	3	3	9.33	414.7	0.88	44.4			
40056	1	1	10.00	108.5	3.36	10.9			
40067	1	0	8.00	161.0	2.27	20.1			
40078	0	1							
40086	94	8	7.39	204.2	1.79	27.6			
40089	3	0	9.00	243.0	1.50	27.0			
40267	6	0	8.67	166.2	2.20	19.2			
40286	1	0	6.00	168.0	2.17	28.0			
40302	0	4							
40374	3	0	10.00	188.0	1.94	18.8			
40394	24	1	7.50	206.5	1.77	27.5			
40733	4	0	8.00	255.0	1.43	31.9			
40738	9	0	7.67	211.1	1.73	27.5			
40741	1	0	10.00	157.0	2.32	15.7			
40962	7	7	5.86	547.0	0.67	93.4			
31509	0	1							
31735	18	0	12.28	161.6	2.26	13.2			
31801	13	3	8.92	224.4	1.63	25.2			
41132	13	2	7.62	239.4	1.52	31.4			
41450	7	0	6.43	202.4	1.80	31.5			
41653	5	1	8.80	249.2	1.46	28.3			
41771	1	0	12.00	165.0	2.21	13.8			
41789	6	0	9.67	168.2	2.17	17.4			
41802	2	0	6.50	158.0	2.31	24.3			
41825	0	1							
41838	0	1							
32002	4	4	11.25	342.5	1.07	30.4			
32021	1	1	13.00	329.0	1.11	25.3			
32031	35	3	10.60	199.6	1.83	18.8			
32126	3	1	8.00	155.8	2.34	19.5			
32142	3	2	7.67	289.7	1.26	37.8			
32204	4	1	6.50	319.8	1.14	49.2			
32248	9	3	9.56	220.3	1.66	23.1			
32298	1	0	6.00	322.0	1.13	53.7			
32361	6	2	9.17	254.7	1.43	27.8			
32399	17	0	11.18	201.1	1.81	18.0			
32428	2	0	12.50	180.0	2.03	14.4			
32504	12	2	10.92	186.9	1.95	17.1			
32531	1	0	7.00	219.0	1.67	31.3			
32532	6	3	10.67	320.2	1.14	30.0			
32626	25	3	9.16	226.8	1.61	24.8			
32674	3	2	10.00	329.7	1.11	33.0			
32692	5	1	12.40	188.0	1.94	15.2			
32750	4	0	7.25	172.0	2.12	23.7			
32775	4	0	9.50	160.0	2.28	16.8			
32797	4	1	7.50	291.5	1.25	38.9			
32812	1	0	15.00	364.0	1.00	24.3			
32814	2	1	10.00	328.0	1.11	32.8			
32834	10	2	6.70	192.4	1.90	28.7			
32926	1	0	13.00	287.0	1.27	22.1			

Rejec	Št. pras.	Št. izl.	$P_Z/gn.$	KD/gn.	G_L	KD/ P_Z	Št. svinj v čredi	Remont (%)	G_S
32934	4	0	10.25	171.3	2.13	16.7			
32977	2	0	10.00	218.5	1.67	21.9			
33014	7	2	7.71	232.7	1.57	30.2			
33183	6	1	11.00	159.6	2.29	14.5			
33354	44	2	10.43	192.2	1.90	18.4			
33374	7	4	8.43	312.8	1.17	37.1			
33494	4	0	11.75	190.0	1.92	16.2			
33512	3	0	10.33	164.7	2.22	15.9			
33531	3	1	9.67	224.7	1.62	23.2			
33564	15	2	10.00	228.9	1.59	22.9			
33569	1	1	8.00	513.0	0.71	64.1			
33610	6	2	11.17	220.2	1.66	19.7			
33618	0	1							
33637	5	0	10.40	183.2	1.99	17.6			
33675	4	0	9.75	184.3	1.98	18.9			
33711	17	2	9.82	207.2	1.76	21.1			
33725	14	2	10.29	199.4	1.83	19.4			
33745	1	0	12.00	297.0	1.23	24.8			
33883	3	1	11.00	198.3	1.84	18.0			
33887	2	0	12.50	260.5	1.40	20.8			
33978	1	0	8.00	394.0	0.93	49.3			
34034	6	2	8.67	180.5	2.02	20.8			
34051	2	0	11.00	198.0	1.84	18.0			
34060	3	0	9.33	231.3	1.58	24.8			
34091	5	0	8.20	233.2	1.57	28.4			
35099	24	5	6.88	282.8	1.29	41.1			
35103	8	0	10.13	210.9	1.73	20.8			
35111	4	0	10.50	236.0	1.55	22.5			
35140	2	3	10.50	436.5	0.84	41.6			
35151	0	1							
35155	1	0	11.00	230.0	1.59	20.9			
35179	1	0	7.00	265.0	1.38	37.9			
37046	6	3	8.33	242.7	1.50	29.1			
37063	2	0	14.00	206.7	1.77	14.8			
37096	11	3	10.09	232.4	1.57	23.0			
37100	1	0	10.00	206.0	1.77	20.6			
37170	2	0	11.00	181.5	2.01	16.5			
37241	4	0	9.25	205.3	1.78	22.2			
37298	2	0	3.50	264.5	1.38	75.6			
37315	1	0	9.00	185.0	1.97	20.6			
37328	2	0	9.00	337.5	1.08	37.5			
37342	1	0	9.00	362.0	1.01	40.2			
Skupaj	632	108	9.10	224.1	1.63	24.6			

Tabela 1.8: Dolžina laktacije in starostna struktura na kmetijah

Rejec	DOLŽINA LAKTACIJE							P R A S I T V E		
	Lakt. (dni)	do 14 dni (%)	15-19 dni (%)	20-24 dni (%)	25-29 dni (%)	30-34 dni (%)	≥35 dni (%)	prva (%)	2.-7. (%)	≥8 (%)
30098	31.0	0.0	0.0	0.0	20.0	20.0	60.0	0.0	100.0	0.0
30143	47.5	0.0	0.0	0.0	0.0	0.0	100.0	33.3	66.7	0.0
30468	40.2	16.7	0.0	0.0	0.0	0.0	83.3	0.0	83.3	16.7
40048	32.0	0.0	0.0	0.0	0.0	25.0	75.0	33.3	66.7	0.0
40056	37.0	0.0	0.0	0.0	0.0	66.7	33.3	0.0	100.0	0.0
40067	39.0	0.0	0.0	0.0	0.0	0.0	100.0	0.0	100.0	0.0
40078							100.0	0.0	100.0	0.0
40086	39.3	0.0	0.0	0.0	0.0	6.0	94.0	42.7	57.3	0.0
40089	31.0	0.0	0.0	0.0	50.0	50.0	0.0	33.3	66.7	0.0
40267	33.0	0.0	0.0	0.0	16.7	66.7	16.7	0.0	100.0	0.0
40286	39.0	0.0	0.0	0.0	0.0	0.0	100.0	0.0	100.0	0.0
40302							100.0	0.0	100.0	0.0
40374	60.7	0.0	0.0	0.0	0.0	0.0	100.0	0.0	33.3	66.7
40394	44.1	0.0	0.0	19.2	0.0	15.4	65.4	27.8	72.2	0.0
40733								100.0	0.0	0.0
40738	49.9	0.0	0.0	0.0	0.0	0.0	100.0	0.0	100.0	0.0
40741								100.0	0.0	0.0
40962	66.0	0.0	0.0	0.0	0.0	5.0	95.0	0.0	75.0	25.0
31509							100.0	0.0	0.0	100.0
31735	44.2	0.0	0.0	0.0	0.0	0.0	100.0	11.1	88.9	0.0
31801	35.6	9.1	0.0	0.0	0.0	9.1	81.8	35.3	52.9	11.8
41132	61.1	0.0	0.0	0.0	0.0	0.0	100.0	26.7	66.6	6.7
41450	68.2	20.0	0.0	0.0	0.0	0.0	80.0	28.6	71.4	0.0
41653	69.0	50.0	0.0	0.0	0.0	0.0	50.0	66.7	33.3	0.0
41771	44.0	0.0	0.0	0.0	0.0	0.0	100.0	0.0	100.0	0.0
41789	35.3	0.0	0.0	0.0	0.0	28.6	71.4	22.2	77.8	0.0
41802	45.0	0.0	0.0	0.0	0.0	0.0	100.0	0.0	100.0	0.0
41825		7.1			21.4	14.3	57.1	0.0	85.7	14.3
41838							100.0	0.0	100.0	0.0
32002	32.3	20.0	0.0	0.0	0.0	40.0	40.0	37.5	25.0	37.5
32021	47.0	0.0	0.0	0.0	0.0	0.0	100.0	0.0	100.0	0.0
32031	50.7	2.9	0.0	0.0	0.0	0.0	97.1	7.9	68.4	23.7
32126	31.0	0.0	0.0	0.0	0.0	66.7	33.3	40.0	60.0	0.0
32142	41.0	20.0	0.0	0.0	0.0	20.0	60.0	16.7	83.3	0.0
32204	57.5	33.3	0.0	0.0	0.0	0.0	66.7	40.0	0.0	60.0
32248	39.0	0.0	0.0	0.0	0.0	0.0	100.0	16.7	75.0	8.3
32298	31.0	0.0	0.0	0.0	0.0	100.0	0.0	0.0	100.0	0.0
32361	38.0	0.0	0.0	20.0	0.0	20.0	60.0	44.4	55.6	0.0
32399	56.9	7.1	0.0	0.0	0.0	0.0	92.9	17.6	82.4	0.0
32428	58.0	0.0	0.0	0.0	0.0	0.0	100.0	0.0	100.0	0.0
32504	42.0	0.0	0.0	0.0	0.0	7.1	92.9	0.0	100.0	0.0
32531	57.0	0.0	0.0	0.0	0.0	0.0	100.0	0.0	100.0	0.0
32532	46.8	0.0	0.0	0.0	0.0	0.0	100.0	11.1	66.7	22.2
32626	49.9	0.0	0.0	0.0	4.5	4.5	90.9	26.7	63.3	10.0
32674	37.3	0.0	0.0	0.0	16.7	33.3	50.0	0.0	83.3	16.7
32692	45.8	0.0	0.0	0.0	0.0	0.0	100.0	25.0	75.0	0.0
32750	42.8	0.0	0.0	0.0	0.0	0.0	100.0	0.0	100.0	0.0
32775	34.0	0.0	0.0	0.0	0.0	33.3	66.7	25.0	75.0	0.0
32797	55.3	0.0	0.0	0.0	0.0	0.0	100.0	0.0	20.0	80.0
32812	60.0	0.0	0.0	0.0	0.0	0.0	100.0	0.0	0.0	100.0
32814	52.0	0.0	0.0	33.3	0.0	33.3	33.3	0.0	33.3	66.7
32834	53.6	0.0	0.0	11.1	0.0	11.1	77.8	25.0	41.7	33.3

Rejec	DOLŽINA LAKTACIJE							P R A S I T V E		
	Lakt. (dni)	do 14 dni (%)	15-19 dni (%)	20-24 dni (%)	25-29 dni (%)	30-34 dni (%)	≥35 dni (%)	prva (%)	2.-7. (%)	≥8 (%)
32926	36.0	0.0	0.0	0.0	0.0	0.0	100.0	50.0	50.0	0.0
32934	49.8	0.0	0.0	0.0	0.0	0.0	100.0	0.0	100.0	0.0
32977	67.0	0.0	0.0	0.0	0.0	0.0	100.0	50.0	50.0	0.0
33014	45.7	0.0	0.0	0.0	0.0	0.0	100.0	11.1	77.8	11.1
33183	35.2	12.5	0.0	0.0	0.0	25.0	62.5	0.0	75.0	25.0
33354	46.4	0.0	0.0	0.0	0.0	0.0	100.0	22.4	51.1	26.5
33374	51.3	0.0	0.0	0.0	0.0	0.0	100.0	41.7	41.6	16.7
33494	56.0	0.0	0.0	0.0	0.0	0.0	100.0	0.0	100.0	0.0
33512	27.7	33.3	0.0	0.0	0.0	0.0	66.7	0.0	100.0	0.0
33531	45.5	0.0	0.0	0.0	0.0	0.0	100.0	25.0	75.0	0.0
33564	56.0	0.0	0.0	0.0	0.0	0.0	100.0	0.0	70.6	29.4
33569							100.0	50.0	0.0	50.0
33610	49.8	11.1	0.0	0.0	0.0	0.0	88.9	0.0	55.6	44.4
33618							100.0	0.0	100.0	0.0
33637	58.8	0.0	0.0	0.0	0.0	0.0	100.0	0.0	100.0	0.0
33675	48.0	0.0	0.0	0.0	0.0	0.0	100.0	37.5	62.5	0.0
33711	38.4	0.0	0.0	8.3	0.0	8.3	83.3	40.0	45.0	15.0
33725	40.1	7.1	0.0	0.0	7.1	7.1	78.6	12.5	81.2	6.3
33745	35.0	0.0	0.0	0.0	0.0	0.0	100.0	0.0	100.0	0.0
33883	58.5	0.0	0.0	0.0	0.0	0.0	100.0	25.0	75.0	0.0
33887	31.0	0.0	0.0	0.0	0.0	100.0	0.0	50.0	50.0	0.0
33978								100.0	0.0	0.0
34034	29.2	33.3	0.0	0.0	0.0	22.2	44.4	30.8	61.5	7.7
34051	57.5	0.0	0.0	0.0	0.0	0.0	100.0	0.0	100.0	0.0
34060	107.3	0.0	0.0	0.0	0.0	0.0	100.0	0.0	100.0	0.0
34091	58.3	0.0	0.0	0.0	0.0	0.0	100.0	20.0	80.0	0.0
35099	53.0	5.0	0.0	0.0	0.0	0.0	95.0	35.5	58.0	6.5
35103	59.1	0.0	0.0	0.0	0.0	0.0	100.0	0.0	100.0	0.0
35111	37.5	0.0	0.0	0.0	0.0	0.0	100.0	40.0	40.0	20.0
35140	46.5	20.0	0.0	0.0	0.0	20.0	60.0	0.0	80.0	20.0
35151							100.0	0.0	100.0	0.0
35155	48.0	0.0	0.0	0.0	0.0	0.0	100.0	0.0	0.0	100.0
35179								100.0	0.0	0.0
37046	21.3	14.3	0.0	0.0	14.3	57.1	14.3	30.0	70.0	0.0
37063	51.0	0.0	0.0	0.0	0.0	0.0	100.0	33.3	66.7	0.0
37096	47.8	14.3	0.0	0.0	7.1	0.0	78.6	17.6	64.8	17.6
37100	30.0	0.0	0.0	0.0	0.0	50.0	50.0	0.0	100.0	0.0
37170	41.5	0.0	0.0	0.0	0.0	50.0	50.0	0.0	100.0	0.0
37241	68.3	0.0	0.0	0.0	0.0	0.0	100.0	0.0	50.0	50.0
37298								100.0	0.0	0.0
37315								100.0	0.0	0.0
37328	61.0	0.0	0.0	0.0	0.0	0.0	100.0	33.3	66.7	0.0
37342	41.0	0.0	0.0	0.0	0.0	0.0	100.0	0.0	100.0	0.0
Skupaj	47.2	3.5	0.0	1.4	1.7	7.8	85.6	23.0	66.1	10.9

Tabela 1.9: Interim obdobje na kmetijah

Rejec	PRVESNICE				STARE SVINJE			
	IO (dni)	do 12 dni (%)	12-40 dni (%)	≥41 dni (%)	IO (dni)	do 12 dni (%)	12-40 dni (%)	≥41 dni (%)
30098	7.0	100.0	0.0	0.0				
30143	6.0	100.0	0.0	0.0	77.0	0.0	0.0	100.0
30468					16.8	50.0	50.0	0.0
40048	27.5	50.0	0.0	50.0				
40056	2.0	100.0	0.0	0.0				
40067	6.0	100.0	0.0	0.0				
40086	13.8	62.5	37.5	0.0	16.9	50.0	45.5	4.5
40089	26.0	0.0	100.0	0.0	81.0	0.0	0.0	100.0
40267					5.3	100.0	0.0	0.0
40286	15.0	0.0	100.0	0.0				
40374	4.0	100.0	0.0	0.0	9.5	50.0	50.0	0.0
40394	21.2	0.0	100.0	0.0	25.9	37.5	37.5	25.0
40738	10.0	100.0	0.0	0.0	12.6	87.5	0.0	12.5
40834	5.0	100.0	0.0	0.0				
40962	50.5	0.0	0.0	100.0	143.7	0.0	44.4	55.6
31735	5.7	100.0	0.0	0.0	13.3	92.3	0.0	7.7
31801	16.5	50.0	50.0	0.0	11.2	80.0	20.0	0.0
41035	272.0	0.0	0.0	100.0				
41132	8.0	100.0	0.0	0.0	18.3	44.4	44.4	11.1
41450	7.5	100.0	0.0	0.0	34.3	0.0	66.7	33.3
41653	9.0	100.0	0.0	0.0				
41771	5.0	100.0	0.0	0.0				
41789	6.0	100.0	0.0	0.0	9.4	80.0	20.0	0.0
41802					0.0	100.0	0.0	0.0
41825	354.0	0.0	0.0	100.0	136.0	0.0	0.0	100.0
41838	6.0	100.0	0.0	0.0				
32002					5.0	100.0	0.0	0.0
32021					15.0	0.0	100.0	0.0
32031					21.7	47.2	33.3	19.4
32126	11.0	100.0	0.0	0.0				
32142	3.0	100.0	0.0	0.0	19.0	66.7	0.0	33.3
32204					68.7	0.0	0.0	100.0
32248	27.0	0.0	100.0	0.0	12.0	33.3	66.7	0.0
32298					4.7	100.0	0.0	0.0
32361	6.0	100.0	0.0	0.0	4.5	100.0	0.0	0.0
32399	29.6	40.0	40.0	20.0	8.4	90.9	0.0	9.1
32428					8.0	100.0	0.0	0.0
32504	6.0	100.0	0.0	0.0	5.5	100.0	0.0	0.0
32531					47.0	0.0	0.0	100.0
32532	119.0	0.0	0.0	100.0	29.8	50.0	16.7	33.3
32626	22.0	50.0	33.3	16.7	40.9	20.0	60.0	20.0
32674	66.0	0.0	0.0	100.0	90.0	0.0	0.0	100.0
32692	6.0	100.0	0.0	0.0	12.3	66.7	33.3	0.0
32713					147.0	0.0	0.0	100.0
32750					8.6	100.0	0.0	0.0
32775	7.0	100.0	0.0	0.0	5.5	100.0	0.0	0.0
32797					35.3	50.0	25.0	25.0
32812					187.0	0.0	0.0	100.0
32814					17.3	66.7	33.3	0.0
32834	38.0	0.0	100.0	0.0	16.0	33.3	66.7	0.0
32876								
32922	6.0	100.0	0.0	0.0				

Rejec	PRVESNICE				STARE SVINJE			
	IO (dni)	do 12 dni (%)	12-40 dni (%)	≥41 dni (%)	IO (dni)	do 12 dni (%)	12-40 dni (%)	≥41 dni (%)
32926	5.0	100.0	0.0	0.0				
32934	5.0	100.0	0.0	0.0				
32977	9.0	100.0	0.0	0.0				
33014					9.0	80.0	20.0	0.0
33183					9.3	83.3	16.7	0.0
33354	4.0	100.0	0.0	0.0	7.1	88.6	8.6	2.9
33374	25.0	0.0	100.0	0.0	18.0	0.0	100.0	0.0
33494					17.0	50.0	50.0	0.0
33512	4.5	100.0	0.0	0.0	31.5	50.0	0.0	50.0
33531	5.0	100.0	0.0	0.0	-11.0	100.0	0.0	0.0
33564	427.0	0.0	0.0	100.0	40.7	40.0	26.7	33.3
33610					12.0	71.4	28.6	0.0
33618					80.0	0.0	0.0	100.0
33637					10.6	80.0	20.0	0.0
33675	12.3	66.7	0.0	33.3				
33691								
33710					409.0	0.0	0.0	100.0
33711	16.3	75.0	0.0	25.0	8.4	87.5	12.5	0.0
33725	14.3	75.0	25.0	0.0	14.4	66.7	22.2	11.1
33745					149.0	0.0	0.0	100.0
33883	6.0	100.0	0.0	0.0				
33887	146.0	0.0	0.0	100.0				
34034	32.7	0.0	66.7	33.3	18.8	75.0	0.0	25.0
34051	4.0	100.0	0.0	0.0	13.0	0.0	100.0	0.0
34060					11.0	66.7	33.3	0.0
34086	4.0	100.0	0.0	0.0	5.0	100.0	0.0	0.0
34091					15.0	60.0	20.0	20.0
35099	26.6	60.0	20.0	20.0	89.3	54.5	9.1	36.4
35103	89.7	33.3	0.0	66.7	8.4	100.0	0.0	0.0
35111	65.0	0.0	0.0	100.0	-1.0	100.0	0.0	0.0
35140					180.6	40.0	0.0	60.0
35151					191.0	0.0	0.0	100.0
35155	11.0	100.0	0.0	0.0	47.0	0.0	0.0	100.0
35159								
37046	55.3	33.3	33.3	33.3	7.5	100.0	0.0	0.0
37063	99.0	0.0	0.0	100.0	6.0	100.0	0.0	0.0
37096	30.0	0.0	100.0	0.0	6.2	61.5	38.5	0.0
37100	63.0	0.0	0.0	100.0				
37170					10.7	66.7	33.3	0.0
37201					309.0	0.0	0.0	100.0
37204					238.5	0.0	25.0	75.0
37241	4.0	100.0	0.0	0.0	28.7	0.0	66.7	33.3
37298								
37315					5.0	100.0	0.0	0.0
37328					7.0	100.0	0.0	0.0
37342					7.0	100.0	0.0	0.0
Skupaj	29.6	61.1	21.4	17.5	30.0	60.2	23.2	16.5

Tabela 1.10: Poodstavitveni premor na kmetijah

Rejec	PRVESNICE					STARE SVINJE				
	Št. svinj	PP (dni)	do 12 dni (%)	13-60 dni (%)	≥61 dni (%)	Št. svinj	PP (dni)	do 12 dni (%)	13-60 dni (%)	≥61 dni (%)
30098	1	7.0	100.0	0.0	0.0	0				
30143	1	6.0	100.0	0.0	0.0	1	77.0	0.0	0.0	100.0
30468	0					6	26.0	50.0	33.3	16.7
40048	2	183.5	0.0	50.0	50.0	0				
40056	1	2.0	100.0	0.0	0.0	0				
40067	1	6.0	100.0	0.0	0.0	0				
40086	16	13.8	62.5	37.5	0.0	22	16.9	50.0	45.5	4.5
40089	1	26.0	0.0	100.0	0.0	1	81.0	0.0	0.0	100.0
40267	0					8	14.6	75.0	25.0	0.0
40286	1	15.0	0.0	100.0	0.0	0				
40374	1	4.0	100.0	0.0	0.0	2	9.5	50.0	50.0	0.0
40394	5	21.2	0.0	100.0	0.0	8	25.9	37.5	50.0	12.5
40738	1	10.0	100.0	0.0	0.0	8	36.1	75.0	12.5	12.5
40834	1	5.0	100.0	0.0	0.0	0				
40962	2	50.5	0.0	100.0	0.0	9	143.7	0.0	55.6	44.4
31735	3	5.7	100.0	0.0	0.0	13	13.3	92.3	0.0	7.7
31801	2	16.5	50.0	50.0	0.0	5	11.2	80.0	20.0	0.0
41035	1	272.0	0.0	0.0	100.0	0				
41132	2	8.0	100.0	0.0	0.0	9	18.3	44.4	55.6	0.0
41450	2	7.5	100.0	0.0	0.0	3	34.3	0.0	66.7	33.3
41653	1	9.0	100.0	0.0	0.0	0				
41771	1	5.0	100.0	0.0	0.0	0				
41789	2	6.0	100.0	0.0	0.0	5	9.4	80.0	20.0	0.0
41802	0					2	0.0	100.0	0.0	0.0
41825	1	354.0	0.0	0.0	100.0	1	136.0	0.0	0.0	100.0
41838	1	6.0	100.0	0.0	0.0	0				
32002	0					3	13.3	66.7	33.3	0.0
32021	0					1	15.0	0.0	100.0	0.0
32031	0					36	26.8	47.2	41.7	11.1
32126	1	11.0	100.0	0.0	0.0	0				
32142	2	15.0	50.0	50.0	0.0	3	120.0	33.4	33.3	33.3
32204	0					3	68.7	0.0	33.3	66.7
32248	1	27.0	0.0	100.0	0.0	6	12.0	33.3	66.7	0.0
32298	0					3	62.0	66.7	0.0	33.3
32361	1	6.0	100.0	0.0	0.0	2	4.5	100.0	0.0	0.0
32399	5	42.8	40.0	20.0	40.0	11	16.3	72.7	9.1	18.2
32428	0					2	8.0	100.0	0.0	0.0
32504	4	6.0	100.0	0.0	0.0	11	7.0	81.8	18.2	0.0
32531	0					1	47.0	0.0	100.0	0.0
32532	1	119.0	0.0	0.0	100.0	6	29.8	50.0	33.3	16.7
32626	6	22.0	50.0	33.3	16.7	15	44.3	20.0	60.0	20.0
32674	1	66.0	0.0	0.0	100.0	2	90.0	0.0	0.0	100.0
32692	1	6.0	100.0	0.0	0.0	3	12.3	66.7	33.3	0.0
32713	0					2	189.5	0.0	0.0	100.0
32750	0					5	11.8	80.0	20.0	0.0
32775	1	7.0	100.0	0.0	0.0	2	5.5	100.0	0.0	0.0
32797	0					4	35.3	50.0	25.0	25.0
32812	0					1	187.0	0.0	0.0	100.0
32814	0					3	17.3	66.7	33.3	0.0
32834	1	38.0	0.0	100.0	0.0	3	16.0	33.3	66.7	0.0
32876	0					0				
32922	2	6.0	100.0	0.0	0.0	0				

Rejec	PRVESNICE					STARE SVINJE				
	Št. svinj	PP (dni)	do 12 dni (%)	13-60 dni (%)	≥61 dni (%)	Št. svinj	PP (dni)	do 12 dni (%)	13-60 dni (%)	≥61 dni (%)
32926	2	69.0	50.0	0.0	50.0	0				
32934	4	5.0	100.0	0.0	0.0	0				
32977	1	9.0	100.0	0.0	0.0	0				
33014	0					5	9.0	80.0	20.0	0.0
33183	0					6	9.3	83.3	16.7	0.0
33354	1	4.0	100.0	0.0	0.0	35	13.3	82.9	11.4	5.7
33374	1	25.0	0.0	100.0	0.0	2	39.0	0.0	50.0	50.0
33494	0					4	19.0	25.0	75.0	0.0
33512	2	4.5	100.0	0.0	0.0	2	31.5	50.0	50.0	0.0
33531	1	5.0	100.0	0.0	0.0	1	-11.0	100.0	0.0	0.0
33564	1	427.0	0.0	0.0	100.0	15	40.7	40.0	33.3	26.7
33610	0					7	15.0	57.1	42.9	0.0
33618	0					1	80.0	0.0	0.0	100.0
33637	0					5	10.6	80.0	20.0	0.0
33675	3	12.3	66.7	33.3	0.0	0				
33691	0					0				
33710	0					1	409.0	0.0	0.0	100.0
33711	4	16.3	75.0	25.0	0.0	8	11.3	75.0	25.0	0.0
33725	4	14.3	75.0	25.0	0.0	9	14.4	66.7	22.2	11.1
33745	0					1	149.0	0.0	0.0	100.0
33883	1	6.0	100.0	0.0	0.0	0				
33887	1	146.0	0.0	0.0	100.0	0				
34034	3	43.0	0.0	100.0	0.0	4	18.8	75.0	25.0	0.0
34051	1	4.0	100.0	0.0	0.0	2	28.0	0.0	100.0	0.0
34060	0					3	11.0	66.7	33.3	0.0
34086	1	4.0	100.0	0.0	0.0	1	5.0	100.0	0.0	0.0
34091	0					5	29.6	40.0	40.0	20.0
35099	5	26.6	60.0	20.0	20.0	11	89.3	54.5	9.1	36.4
35103	3	89.7	33.3	0.0	66.7	5	8.4	100.0	0.0	0.0
35111	2	184.0	0.0	0.0	100.0	2	27.0	50.0	50.0	0.0
35140	0					5	180.6	40.0	0.0	60.0
35151	0					1	191.0	0.0	0.0	100.0
35155	1	11.0	100.0	0.0	0.0	2	57.5	0.0	50.0	50.0
35159	0					0				
37046	3	55.3	33.4	33.3	33.3	2	7.5	100.0	0.0	0.0
37063	1	99.0	0.0	0.0	100.0	1	6.0	100.0	0.0	0.0
37096	1	30.0	0.0	100.0	0.0	13	15.6	53.8	38.5	7.7
37100	1	63.0	0.0	0.0	100.0	0				
37170	0					3	17.0	33.3	66.7	0.0
37201	0					1	309.0	0.0	0.0	100.0
37204	0					4	238.5	0.0	25.0	75.0
37241	1	4.0	100.0	0.0	0.0	3	28.7	0.0	100.0	0.0
37298	0					0				
37315	0					1	5.0	100.0	0.0	0.0
37328	0					1	7.0	100.0	0.0	0.0
37342	0					2	7.0	100.0	0.0	0.0
Skupaj	126	36.0	58.7	26.2	15.1	405	34.7	55.3	30.1	14.6

1.4 Analiza izločitev

Tabela 1.11: Izločitve svinj na kmetijah

Rejec	MLADICE						STARE SVINJE						
	Št. izl.	DOI (dni)	Izločitve		Vzrok izločitve			Št. izl.	DI (dni)	Izločitve		Vzrok izločitve	
			pred	po pr.	8	9	10			pred	po pr.	9	10
30098	0						3	184.3	100.0	0.0			
30143	0						0						
40048	1	643.0	100.0	0.0	100.0		2	192.0	100.0	0.0			
40056	0						0						
40086	0						2	129.0	100.0	0.0			
40089	0						0						
40286	0						0						
40302	0						3	144.3	100.0	0.0			
40374	0						0						
40394	0						1	168.0	100.0	0.0			
40962	0						1	199.0	100.0	0.0			
31509	0						1	305.0	100.0	0.0			
31801	0						0						
41132	0						0						
41450	0						0						
41786	0						1	507.0	100.0	0.0			
41789	0						0						
41825	0						2	364.0	100.0	0.0			
41838	0						1	187.0	100.0	0.0			
32002	2	279.0	100.0	0.0	100.0		2	27.5	100.0	0.0			
32021	0						0						
32031	0						3	134.3	100.0	0.0			
32126	0						1	196.0	100.0	0.0			
32142	0						1	93.0	100.0	0.0			
32204	0						0						
32248	0						3	152.0	100.0	0.0			
32361	0						2	109.5	100.0	0.0			
32399	0						0						
32532	0						1	209.0	100.0	0.0			
32626	0						1	870.0	0.0	100.0			
32674	0						1	870.0	100.0	0.0			
32692	0						0						
32750	0						0						
32775	0						1	592.0	100.0	0.0			
32814	0						1	280.0	0.0	100.0			
32834	0						2	72.0	100.0	0.0			
32839	0						0						
32934	0						1	23.0	100.0	0.0			
33014	0						2	113.5	100.0	0.0			
33315	0						0						
33354	0						3	330.3	100.0	0.0			
33374	0						4	174.8	100.0	0.0			
33494	0						0						
33531	0						1	117.0	100.0	0.0			
33564	0						3	235.3	100.0	0.0			
33610	0						2	115.0	100.0	0.0			
33675	0						0						
33711	0						1	21.0	100.0	0.0			
33725	0						0						
33745	0						0						

Rejec	MLADICE						STARE SVINJE						
	Št. izl.	DOI (dni)	Izločitve		Vzrok izločitve			Št. izl.	DI (dni)	Izločitve		Vzrok izločitve	
			pred	po pr.	8	9	10			pred	po pr.	9	10
33883	0							0					
34034	1	333.0	0.0	100.0			100.0	0					
34086	0							1	125.0	100.0	0.0		
35099	0							7	470.4	100.0	0.0		
35100	0							0					
35103	0							0					
35140	0							3	267.3	100.0	0.0		
35155	0							0					
35159	0							0					
37046	0							2	136.5	100.0	0.0		
37096	0							3	161.0	66.7	33.3	33.3	
37204	0							2	126.5	100.0	0.0		
37315	0							1	606.0	0.0	100.0	100.0	
Skupaj	4	383.5	75.0	25.0	75.0		25.0	72	235.5	94.4	5.6	2.8	

Poglavje 2

Kmetije skupaj po letih

2.1 Velikost gnezda

Tabela 2.1: Velikost gnezda po letih na kmetijah

Leto	MLADICE			STARE SVINJE						SKUPAJ		
	Št. pras.	DOP (dni)	P _{z/} gn.	Št. pras.	DMP (dni)	Lakt. (dni)	IO (dni)	PP (dni)	P _{z/} gn.	Št. pras.	P _{o/} gn.	Izgube (%)
2004	9	291.4	9.44	54	200.6	49.1	33.3	37.9	10.11	63	8.44	15.7
2007	35	276.1	9.09	134	205.8	54.1	29.5	36.7	10.36	169	8.35	17.3
2008	37	257.8	7.62	128	207.8	55.2	29.4	39.8	10.18	165	7.85	18.2
2009	49	327.3	7.24	136	218.3	52.7	35.9	51.4	9.87	185	7.05	23.1
2010	80	251.5	8.34	171	211.8	52.0	40.7	45.5	9.87	251	6.80	27.5
2011	47	222.3	8.32	169	204.0	52.5	26.8	36.6	10.12	216	7.71	20.7
2012	48	246.7	7.98	172	205.7	52.3	33.9	39.4	10.28	220	7.66	21.7
2013	102	280.3	7.92	216	203.3	51.2	30.1	37.4	9.53	318	7.08	21.5
2014	110	261.4	7.26	286	193.4	46.0	28.6	32.4	9.71	396	7.28	19.5
2015	142	297.8	7.51	329	200.0	47.4	32.4	39.8	9.41	471	7.43	16.0
2016	177	293.3	7.86	363	195.7	49.3	29.0	32.8	9.58	540	7.23	19.8
2017	155	247.0	7.72	452	208.2	48.0	40.0	46.0	9.56	607	7.60	16.5
2018	188	273.6	7.79	480	213.6	48.7	43.3	51.1	9.81	668	7.50	18.9
2019	153	280.2	7.69	487	201.9	49.3	33.5	38.0	9.44	640	7.49	16.9
2020	176	257.3	8.09	481	204.7	47.0	37.9	43.4	9.73	657	7.66	17.6
2021	173	271.8	7.88	479	194.3	47.9	27.5	32.2	9.71	652	7.08	23.3

2.2 Analiza pripustov

Tabela 2.2: Analiza pripustov mladic po letih kmetijah

Leto	S K U P A J							PRVI PRIPUST				DRUGI IN VIŠJI			
	Št. prip.	Usp. prip. (%)	Izl. po prip. (%)	Preg. (%)	DPI (dni)	DPP (dni)	P _{z/} prip.	Št. prip.	Prvi (%)	Usp. (%)	P _{z/} prip.	Št. prip.	≥2 (%)	Usp. (%)	P _{z/} prip.
2004	18	50.0	5.6	44.4	116.0	68.9	4.7	12	66.7	41.7	4.2	6	33.3	66.7	5.8
2007	45	77.8	11.1	11.1	132.6	52.8	7.1	37	82.2	81.1	7.5	8	17.8	62.5	5.1
2008	42	88.1	0.0	11.9		53.8	6.8	39	92.9	89.7	7.0	3	7.1	66.7	4.7
2009	57	86.0	5.3	8.8	105.7	63.0	6.2	52	91.2	90.4	6.6	5	8.8	40.0	2.2
2010	93	86.0	2.2	11.8	96.0	46.1	7.0	80	86.0	88.8	7.2	13	14.0	69.2	5.9
2011	50	92.0	6.0	2.0	163.5	19.0	7.6	48	96.0	91.7	7.8	2	4.0	100.0	4.5
2012	29	79.3	6.9	13.8	120.0	89.8	6.0	27	93.1	81.5	6.2	2	6.9	50.0	3.5
2013	122	83.6	8.2	7.4	129.5	102.6	6.6	113	92.6	83.2	6.7	9	7.4	88.9	4.7
2014	124	87.1	4.0	8.9	183.2	77.0	6.3	115	92.7	87.0	6.2	9	7.3	88.9	7.3
2015	162	85.8	3.1	11.1	124.8	93.8	6.5	146	90.1	87.0	6.5	16	9.9	75.0	6.2
2016	205	86.8	2.9	10.2	147.2	62.3	6.9	188	91.7	87.8	6.9	17	8.3	76.5	5.9
2017	184	84.2	2.7	7.1	180.0	45.2	6.4	165	89.7	85.5	6.5	19	10.3	73.7	6.0
2018	218	85.8	1.8	11.5	291.8	78.7	6.7	191	87.6	86.9	6.7	27	12.4	77.8	6.5
2019	175	88.6	5.1	6.3	213.9	50.2	6.9	160	91.4	90.6	7.0	15	8.6	66.7	5.1
2020	189	91.5	2.1	4.8	211.3	52.3	7.3	179	94.7	92.7	7.4	10	5.3	70.0	6.4
2021	194	91.2	2.1	4.1	198.3	53.6	7.2	184	94.9	92.9	7.3	10	5.2	60.0	5.9

Tabela 2.3: Analiza pripustov starih svinj po letih na kmetijah

Leto	S K U P A J							PRVI PRIPUST				DRUGI IN VIŠJI			
	Št. prip.	Usp. prip. (%)	Izl. po prip. (%)	Preg. (%)	DPI (dni)	DPP (dni)	P _z /prip.	Št. prip.	Prvi (%)	Usp. (%)	P _z /prip.	Št. prip.	≥2 (%)	Usp. (%)	P _z /prip.
2004	70	75.7	4.3	20.0	228.7	25.2	7.7	59	84.3	81.4	8.4	11	15.7	45.5	4.3
2007	170	79.4	4.1	15.3	104.0	42.4	8.3	143	84.1	81.8	8.4	27	15.9	66.7	7.4
2008	175	73.7	4.6	21.1	238.8	70.6	7.5	142	81.1	82.4	8.5	33	18.9	36.4	3.1
2009	188	69.7	6.9	22.9	134.5	52.1	6.9	141	75.0	79.4	7.8	47	25.0	42.6	4.2
2010	202	83.2	3.0	11.4	262.8	50.6	8.4	177	87.6	88.7	8.8	25	12.4	60.0	5.5
2011	212	79.3	2.8	16.0	157.2	59.6	8.2	174	82.1	80.5	8.2	38	17.9	79.0	8.2
2012	96	82.3	5.2	10.4	150.2	36.5	8.4	84	87.5	83.3	8.5	12	12.5	75.0	7.9
2013	247	87.5	2.8	9.3	84.1	48.4	8.5	222	89.9	87.8	8.6	25	10.1	84.0	7.6
2014	348	80.8	2.0	13.8	162.1	57.0	8.0	309	88.8	84.5	8.1	39	11.2	66.7	6.7
2015	389	84.6	4.1	10.5	193.2	55.9	8.0	340	87.4	85.0	8.0	49	12.6	85.7	8.0
2016	422	84.1	2.8	10.9	171.8	70.7	8.1	381	90.3	87.4	8.3	41	9.7	61.0	6.1
2017	533	83.7	2.8	10.7	152.5	53.9	8.0	474	88.9	86.1	8.3	59	11.1	69.5	6.0
2018	575	82.8	3.8	9.7	197.1	53.2	8.2	517	89.9	85.5	8.5	58	10.1	63.8	5.7
2019	575	84.4	3.5	11.0	189.5	55.9	8.0	520	90.4	85.8	8.1	55	9.6	81.8	7.7
2020	564	83.2	3.9	9.9	135.7	49.3	8.3	500	88.7	86.6	8.4	64	11.4	70.3	7.0
2021	531	88.5	2.1	6.4	142.7	52.7	8.7	491	92.5	89.6	8.7	40	7.5	87.5	8.5

Tabela 2.4: Distribucija pregonitev po letih na kmetijah

Leto	MLADICE					STARE SVINJE				
	Št. preg.	DPP (dni)	do 25. dne (%)	25-40 dni (%)	po 40. dnevu (%)	Št. preg.	DPP (dni)	do 25. dne (%)	25-40 dni (%)	po 40. dnevu (%)
2004	8	68.9	62.5	0.0	37.5	14	25.2	71.4	21.4	7.1
2007	5	52.8	0.0	20.0	80.0	26	42.4	61.5	7.7	30.7
2008	5	53.8	60.0		40.0	37	70.6	37.8	18.9	43.2
2009	5	63.0	40.0	20.0	40.0	43	52.1	46.5	9.3	44.2
2010	11	46.1	54.6	9.1	36.4	23	50.6	47.8	21.7	30.4
2011	1	19.0	100.0			34	59.6	38.2	11.8	50.0
2012	4	89.8	50.0		50.0	10	36.5	40.0	30.0	30.0
2013	9	102.6	33.3	11.1	55.6	23	48.4	47.8	17.4	34.8
2014	11	77.0	36.4	18.2	45.5	48	57.0	39.6	20.8	39.6
2015	18	93.8	44.4	5.6	50.0	41	55.9	43.9	19.5	36.6
2016	21	62.3	33.3	14.3	52.4	46	70.7	47.8	13.0	39.1
2017	13	45.2	53.9	15.4	30.8	57	53.9	56.1	14.0	29.8
2018	25	78.7	16.0	16.0	68.0	56	53.2	51.8	19.6	28.6
2019	11	50.2	45.5	18.2	36.4	63	55.9	44.4	12.7	42.9
2020	9	52.3	22.2	33.3	44.4	56	49.3	53.6	12.5	33.9
2021	8	53.6	50.0	0.0	50.0	34	52.7	47.1	8.8	44.1

2.3 Analiza reprodukcijskega ciklusa

Tabela 2.5: Starost mladic ob pravitvi in število krmnih dni na živorojenega pujska pri mladicah na kmetijah

Leto	Št. pras.	Starost ob 1.prip. pras.	Starost ob pras.	do 360 dni (%)	361-420 dni (%)	≥421 dni (%)	Izl. (%)	pred prip. (%)	po prip. (%)	Starost ob izl.	kDOP (dni)	KD/ P_z
2004	0											
2007	31	325.4	446.5	9.7	29.0	61.3	24.4	70.0	30.0	504.5	344.7	38.9
2008	55	400.7	516.7	3.7	21.8	74.5	15.9	45.5	54.5	428.2	361.1	46.2
2009	33	365.5	490.6	3.1	12.1	84.8	16.0	100.0	0.0	567.8	372.6	53.7
2010	67	318.0	437.8	17.9	28.4	53.7	21.5	75.0	25.0	397.6	294.1	34.9
2011	55	351.2	471.7	25.5	34.5	40.0	28.9	65.4	34.6	429.2	382.8	45.9
2012	66	383.3	505.9	12.1	25.8	62.1	21.3	69.6	30.4	481.4	368.3	46.2
2013	86	319.4	436.3	15.1	37.2	47.7	19.3	95.7	4.3	414.1	294.5	37.0
2014	123	350.5	470.5	14.7	26.8	58.5	25.3	87.0	13.0	390.3	346.4	46.7
2015	149	379.6	497.0	13.4	19.5	67.1	16.5	84.2	15.8	520.7	354.4	45.4
2016	148	330.2	452.5	10.1	30.4	59.5	17.3	69.2	30.8	375.0	351.3	38.6
2017	155	333.1	451.8	21.9	23.9	54.2	13.3	76.9	23.1	532.9	303.9	40.7
2018	156	320.3	438.6	18.0	39.7	42.3	2.3	75.0	25.0	483.0	241.8	29.8
2019	123	348.5	463.4	16.3	25.2	58.5	13.0	65.0	35.0	396.4	297.4	38.5
2020	178	325.7	441.3	24.1	27.0	48.9	3.1	50.0	50.0	515.8	251.5	31.5
2021	175	305.7	421.4	24.6	26.3	49.1	2.1	50.0	50.0	483.3	227.7	30.2

Tabela 2.6: Doba med pravitvama in število krmnih dni na pujska po letih na kmetijah

Leto	Št. pras.	DMP (dni)	do 160 dni (%)	161-200 dni (%)	≥201 dni (%)	Izl. (%)	DI (dni)	kDMP (dni)	G_L	P_z /leto	KD/ P_z
2004	56	198.8	5.4	58.9	35.7	18.6	189.2	242.7	1.50	15.3	23.9
2007	133	203.4	5.3	57.9	36.8	16.9	180.0	243.2	1.50	15.5	23.5
2008	128	217.7	10.2	50.0	39.8	21.7	212.9	280.2	1.30	13.3	27.4
2009	131	214.6	18.3	34.4	47.3	25.1	239.2	294.6	1.24	12.2	30.0
2010	153	208.7	15.7	47.7	36.6	16.2	247.6	259.0	1.41	13.8	26.5
2011	176	211.6	11.4	47.7	40.9	29.6	198.8	295.6	1.23	12.7	28.7
2012	168	205.0	13.7	54.8	31.5	20.3	154.1	243.6	1.50	15.0	24.3
2013	194	193.6	14.4	57.2	28.4	14.3	169.4	224.4	1.63	16.0	22.9
2014	287	199.3	17.1	53.3	29.6	17.9	193.0	240.5	1.52	14.5	25.2
2015	325	207.3	15.4	51.1	33.5	20.9	238.5	270.2	1.35	12.8	28.5
2016	361	207.3	19.4	50.1	30.5	16.5	180.1	242.8	1.50	14.3	25.5
2017	426	198.7	19.2	53.3	27.5	15.5	171.5	234.3	1.56	15.0	24.3
2018	484	204.2	17.4	47.1	35.5	15.8	233.0	251.6	1.45	14.0	26.1
2019	480	205.8	16.5	50.6	32.9	25.1	190.3	270.9	1.35	12.8	28.5
2020	456	195.4	21.3	50.4	28.3	19.8	157.8	235.8	1.55	15.1	24.2
2021	457	188.7	19.7	59.3	21.0	16.0	161.8	222.7	1.64	15.9	23.0

Tabela 2.7: Velikost gnezda ob rojstvu, gospodarnost priraje pujskov in delež letne obnove črede svinj na kmetijah

Leto	Št. pras.	Št. izl.	$P_z/gn.$	KD/gn.	G_L	KD/ P_z	Št. svinj v čredi	Remont (%)	G_S
2004	56	13	10.14	244.9	1.49	24.1	38	34.0	4.38
2007	164	39	10.07	262.3	1.39	26.0	119	32.9	4.23
2008	183	47	9.51	304.7	1.20	32.0	154	30.4	3.94
2009	164	53	9.24	311.9	1.17	33.8	146	36.3	3.23
2010	220	51	9.37	269.9	1.35	28.8	169	30.2	4.47
2011	231	102	9.84	316.9	1.15	32.2	206	49.6	2.32
2012	234	67	9.44	283.0	1.29	30.0	194	34.6	3.73
2013	280	58	9.23	246.3	1.48	26.7	194	29.8	4.97
2014	410	114	8.91	273.3	1.34	30.7	324	35.2	3.79
2015	474	127	8.96	300.7	1.21	33.6	432	29.4	4.13
2016	509	118	8.97	260.7	1.40	29.0	396	29.8	4.70
2017	581	115	9.06	253.1	1.44	27.9	410	28.1	5.14
2018	640	106	9.27	249.1	1.47	26.9	448	23.6	6.20
2019	603	187	9.14	276.5	1.33	30.2	471	39.7	3.34
2020	634	130	9.25	240.2	1.52	26.0	432	30.1	5.05
2021	632	108	9.10	224.1	1.63	24.6			

Tabela 2.8: Dolžina laktacije in starostna struktura po letih na kmetijah

Leto	DOLŽINA LAKTACIJE (dni)							PRASITVE		
	Lakt. (dni)	do 14 dni (%)	15-19 dni (%)	20-24 dni (%)	25-29 dni (%)	30-34 dni (%)	≥35 dni (%)	prva (%)	2.-7. (%)	≥8 (%)
2004	49.6	0.0	1.4	1.4	1.4	0.0	95.7	2.8	86.1	11.1
2007	54.7	5.2	0.0	0.0	2.9	4.1	87.8	19.3	73.7	7.0
2008	55.2	4.8	0.0	0.6	1.8	3.6	89.2	29.4	62.9	7.7
2009	53.7	7.8	0.0	0.0	1.1	3.4	87.7	21.8	66.0	12.2
2010	52.6	9.9	1.0	1.0	2.1	7.3	78.5	32.7	58.1	9.2
2011	52.5	6.6	0.4	0.8	3.1	3.1	86.0	25.9	64.9	9.2
2012	53.8	4.6	0.0	0.0	3.7	7.8	83.9	33.2	57.9	8.9
2013	50.7	4.1	0.8	0.0	1.6	8.6	84.8	32.8	55.9	11.3
2014	46.8	5.6	0.5	0.8	3.4	8.7	81.0	32.4	58.3	9.3
2015	49.2	3.8	0.5	0.9	2.6	5.6	86.6	35.2	56.6	8.2
2016	49.6	3.0	1.1	0.8	2.8	6.6	85.8	32.0	61.0	7.0
2017	49.1	5.1	0.9	0.9	2.4	8.4	82.4	25.4	66.1	8.5
2018	48.0	1.9	0.5	0.2	2.8	8.4	86.3	21.3	68.8	9.9
2019	49.4	1.8	0.5	1.1	1.5	10.7	84.5	18.8	71.9	9.3
2020	47.6	3.8	0.0	1.0	2.4	7.8	85.0	23.5	67.0	9.5
2021	47.2	3.5	0.0	1.4	1.7	7.8	85.6	23.0	66.1	10.9

Tabela 2.9: Interim obdobje po letih na kmetijah

Leto	PRVESNICE				STARE SVINJE			
	IO (dni)	do 12 dni (%)	12-40 dni (%)	≥41 dni (%)	IO (dni)	do 12 dni (%)	12-40 dni (%)	≥41 dni (%)
2004	41.8	33.4	29.2	37.4	26.4	60.9	17.4	21.7
2007	47.9	31.8	22.5	45.7	24.8	40.5	35.7	23.8
2008	34.3	40.0	34.3	25.7	28.9	42.1	30.7	27.1
2009	45.7	12.2	40.8	46.9	32.2	42.4	30.2	27.3
2010	36.9	40.7	30.5	28.8	43.3	42.0	28.7	29.4
2011	28.9	44.6	23.2	32.1	25.6	55.1	23.1	21.8
2012	44.2	58.6	13.8	27.6	23.3	61.2	19.4	19.4
2013	25.4	58.7	19.0	22.2	31.4	56.5	26.1	17.4
2014	43.7	46.0	18.6	35.4	21.4	58.3	27.2	14.5
2015	40.8	52.8	21.7	25.5	30.0	56.9	24.0	19.1
2016	31.5	51.7	21.7	26.7	29.2	57.0	24.2	18.9
2017	56.0	40.4	19.3	40.4	28.9	61.0	21.3	17.7
2018	56.0	38.0	28.2	33.7	37.1	55.8	20.9	23.3
2019	45.1	44.2	27.2	28.6	28.0	59.3	18.5	22.2
2020	37.7	55.4	19.2	25.4	37.2	55.1	20.5	24.4
2021	29.6	61.1	21.4	17.5	30.0	60.2	23.2	16.5

Tabela 2.10: Poodstavitveni premor po letih na kmetijah

Leto	PRVESNICE					STARE SVINJE				
	Št. svinj	PP (dni)	do 12 dni (%)	13-60 dni (%)	≥61 dni (%)	Št. svinj	PP (dni)	do 12 dni (%)	13-60 dni (%)	≥61 dni (%)
2004	24	47.4	29.2	41.7	29.1	46	31.8	50.0	34.8	15.2
2007	44	51.9	29.5	45.2	25.3	126	35.3	34.1	46.2	19.7
2008	35	48.9	31.4	48.6	20.0	140	48.9	37.9	37.1	25.0
2009	49	124.7	12.2	38.8	49.0	139	48.0	37.4	31.7	30.9
2010	59	52.2	35.6	33.9	30.5	143	49.7	37.0	36.4	26.6
2011	56	42.9	35.7	37.5	26.8	156	35.5	48.7	31.4	19.9
2012	29	50.1	44.8	34.5	20.7	67	32.3	58.2	20.9	20.9
2013	63	30.3	52.4	34.9	12.7	184	41.0	48.9	34.8	16.3
2014	113	47.4	41.6	31.9	26.5	235	26.5	52.7	34.5	12.8
2015	106	52.5	42.4	30.2	27.4	283	37.2	49.8	32.5	17.7
2016	120	38.7	47.5	30.8	21.7	302	35.9	52.7	31.1	16.2
2017	166	66.3	35.6	30.7	33.7	367	35.5	54.0	29.4	16.6
2018	163	60.9	36.1	38.7	25.2	412	46.9	45.8	33.3	20.9
2019	147	53.4	40.8	34.0	25.2	428	32.0	53.5	27.1	19.4
2020	130	46.7	50.7	30.8	18.5	434	43.6	49.0	31.6	19.4
2021	126	36.0	58.7	26.2	15.1	405	34.7	55.3	30.1	14.6

2.4 Analiza izločitev

Tabela 2.11: Izločitve svinj po letih na kmetijah

Leto	MLADICE							STARE SVINJE					
	Št. izl.	DOI (dni)	Izločitve		Vzrok izločitve			Št. izl.	DI (dni)	Izločitve		Vzrok izločitve	
			pred	po pr.	8	9	10			pred	po pr.	9	10
2007	16	313.5	87.5	12.5	18.8	12.5		25	185.5	84.0	16.0	4.0	4.0
2008	8	261.1	87.5	12.5	50.0		12.5	35	228.9	85.7	14.3	5.7	5.7
2009	13	290.1	76.9	23.1	38.5	7.7	15.4	42	250.4	61.9	38.1	9.5	19.0
2010	13	183.3	84.6	15.4	7.7	7.7		51	198.8	86.3	13.7	7.8	
2011	24	212.3	91.7	8.3	8.3	8.3		53	179.9	86.8	13.2	9.4	1.9
2012	29	240.4	79.3	20.7	10.3	10.3		48	254.4	87.5	12.5	2.1	
2013	22	332.8	77.3	22.7	18.2	13.6		50	207.0	84.0	16.0	8.0	2.0
2014	47	184.4	85.1	14.9	4.3	10.6		55	154.0	85.5	14.5	1.8	1.8
2015	40	206.8	92.0	8.0	7.5			82	205.1	85.1	14.9	4.9	2.4
2016	30	207.6	83.3	16.7		16.7		89	187.6	87.6	12.4	1.1	2.2
2017	29	354.8	62.1	37.9	20.7	13.8	3.4	91	206.4	81.3	18.7	8.8	4.4
2018	14	449.1	50.0	50.0	7.1	14.3		135	259.0	83.7	16.3	4.4	0.7
2019	18	215.8	66.7	33.3	5.6	11.1	11.1	158	168.7	88.0	12.0	5.7	0.6
2020	11	430.6	63.6	36.4	54.5	9.1	9.1	138	216.3	87.0	13.0	2.9	2.2
2021	4	383.5	75.0	25.0	75.0		25.0	72	235.5	94.4	5.6	2.8	

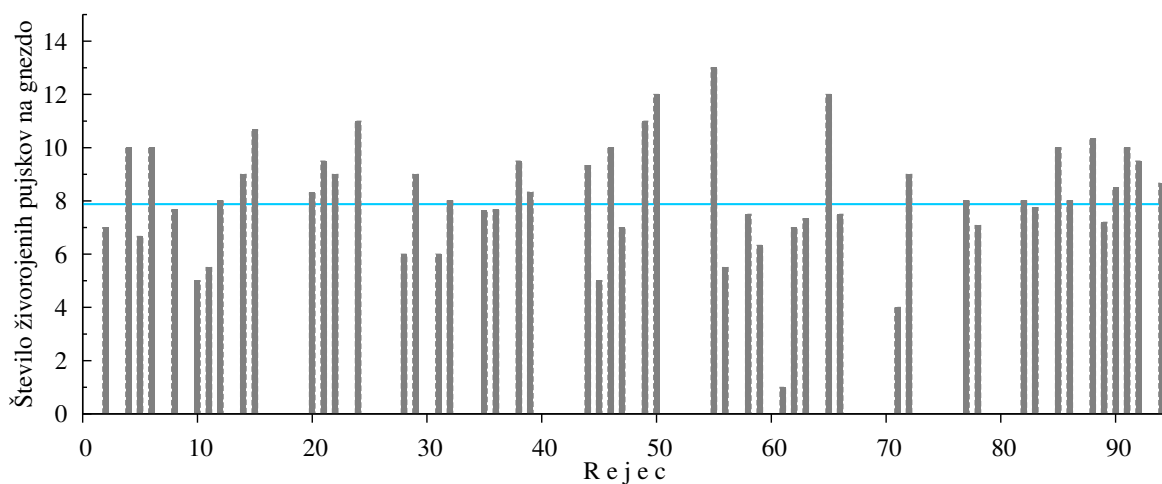
Poglavje 3

Grafični prikaz rezultatov plodnosti

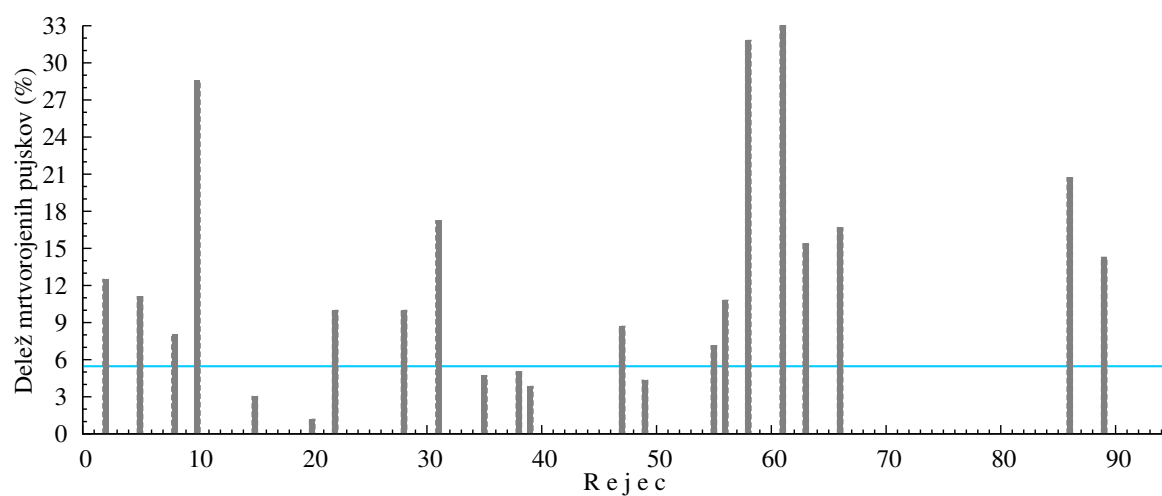
Pojasnila:

- **Modre črte in pike** prikazujejo skupno povprečje za vse reje krškopoljskega prašiča
- **Sivi stolpci** prikazujejo rezultat plodnosti kmetij v kontroli
- **Standard 1** v grafih prikazuje rezultat plodnosti rej sodobnih genotipov prašičev na kmetijah
- **Standard 2** v grafih prikazuje rezultat plodnosti pridobljen iz literature

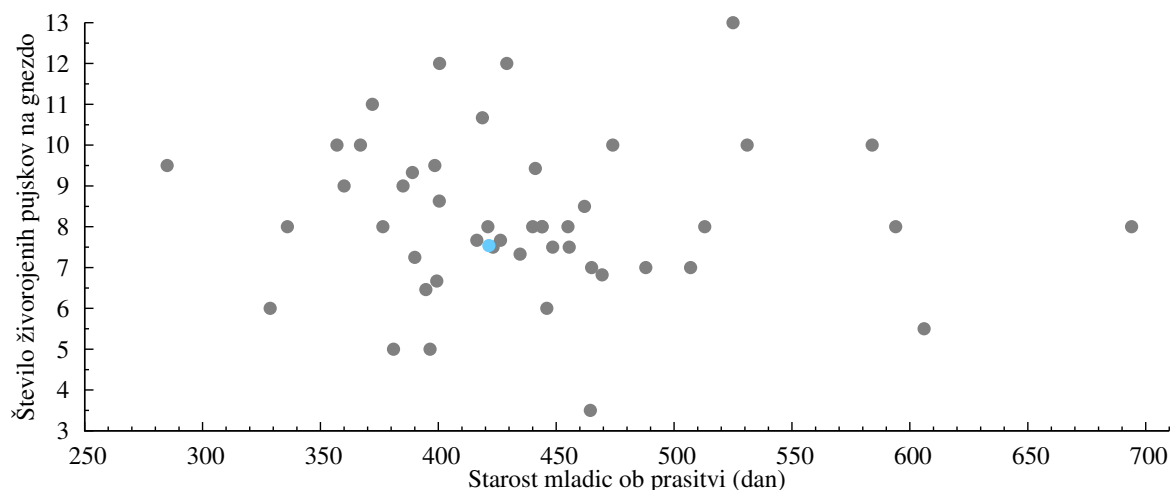
3.1 Plodnost mladic od 1.7.2020 do 30.6.2021



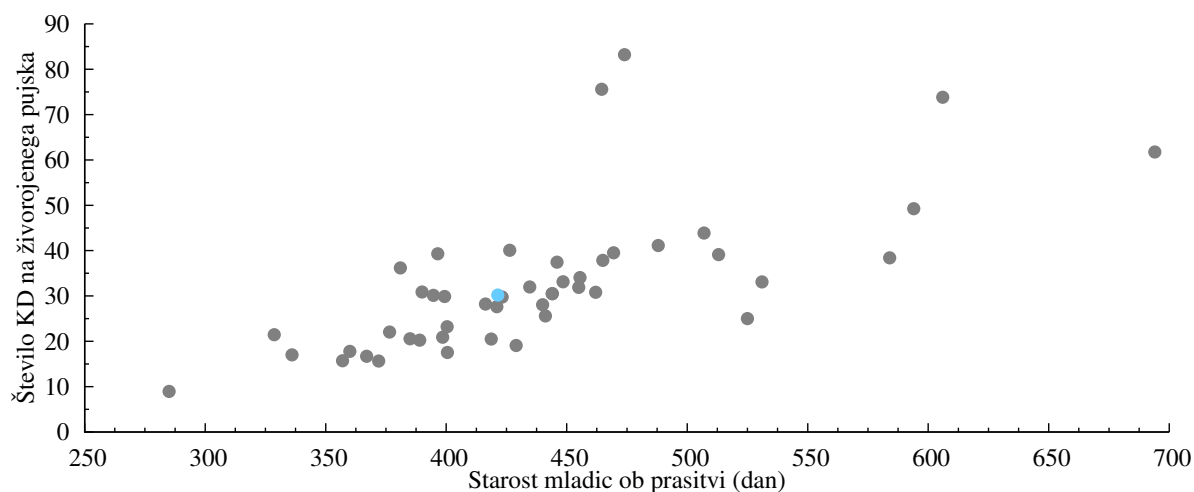
Slika 3.1: Število živorojenih pujskov pri mladicah na kmetijah v izbranem obdobju



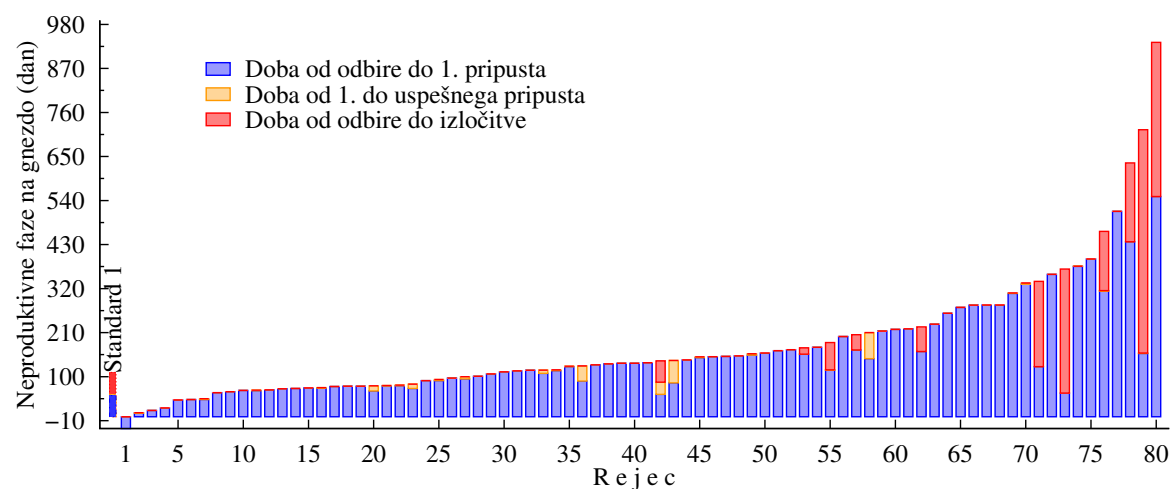
Slika 3.2: Delež mrtvorjenih pujskov pri mladicah na kmetijah v izbranem obdobju



Slika 3.3: Število živorojenih pujskov na gnezdo in starost mladic ob prasitvi na kmetijah v izbranem obdobju

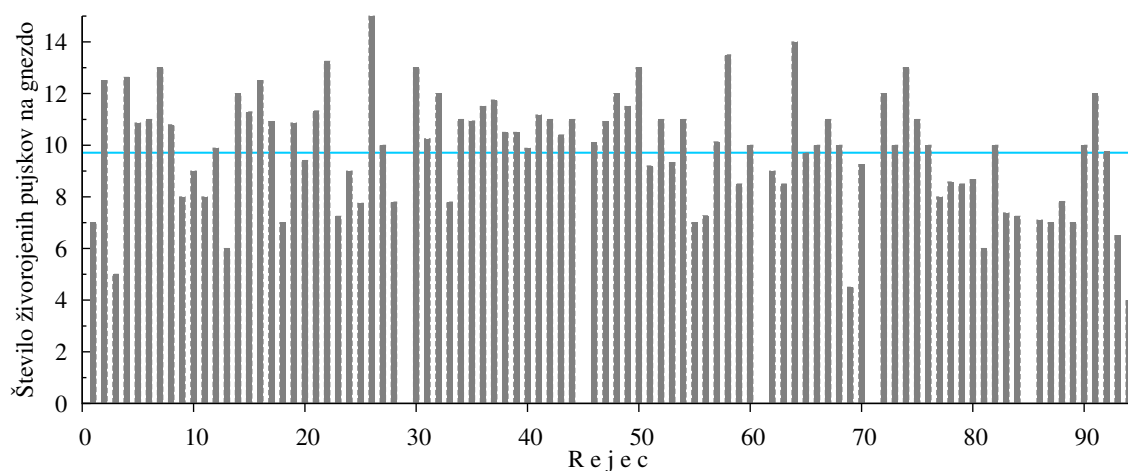


Slika 3.4: Število krmnih dni na živorojenega pujska in starost mladic ob prasitvi na kmetijah v izbranem obdobju

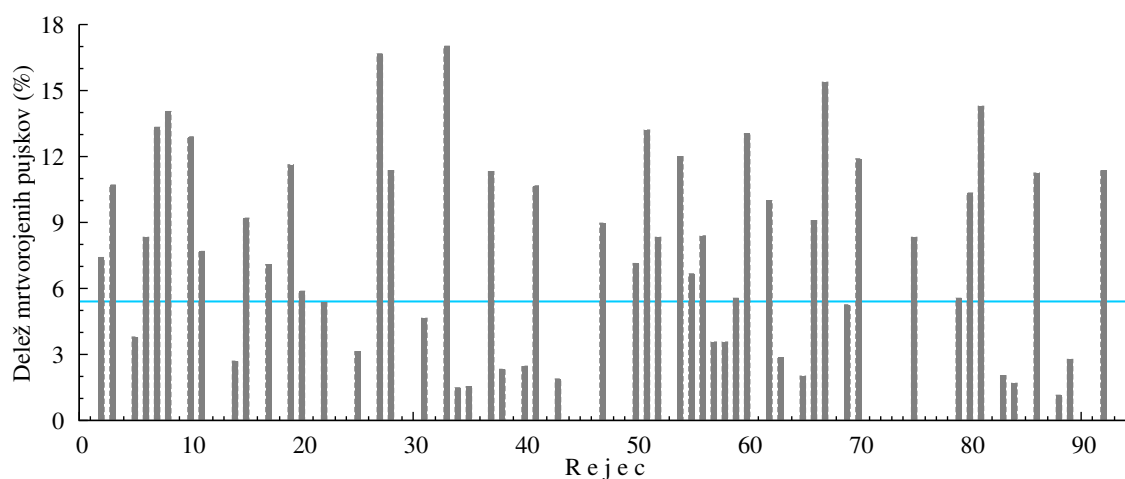


Slika 3.5: Dolžina neproductivnih faz na gnezdo pri mladicah na kmetijah v izbranem obdobju

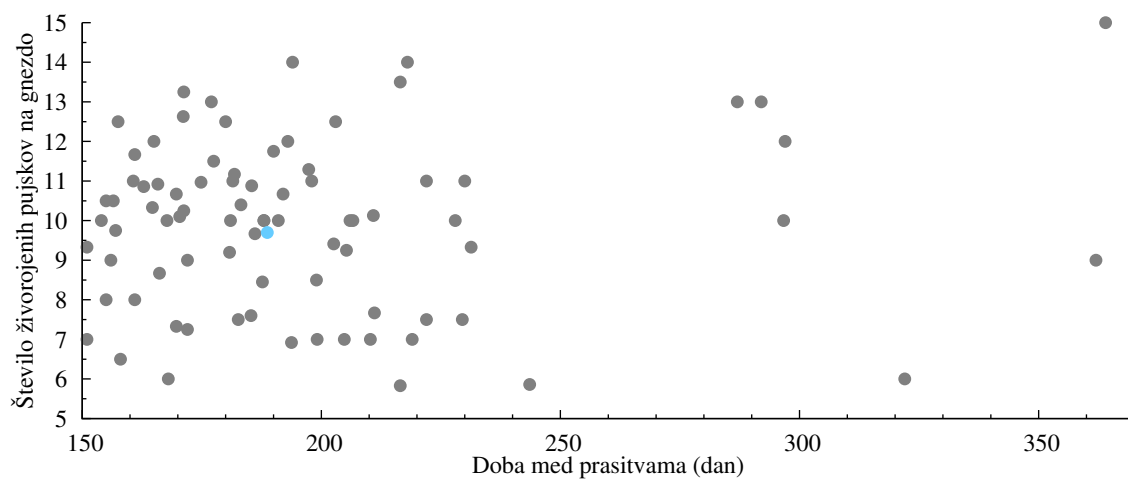
3.2 Plodnost starih svinj od 1.7.2020 do 30.6.2021



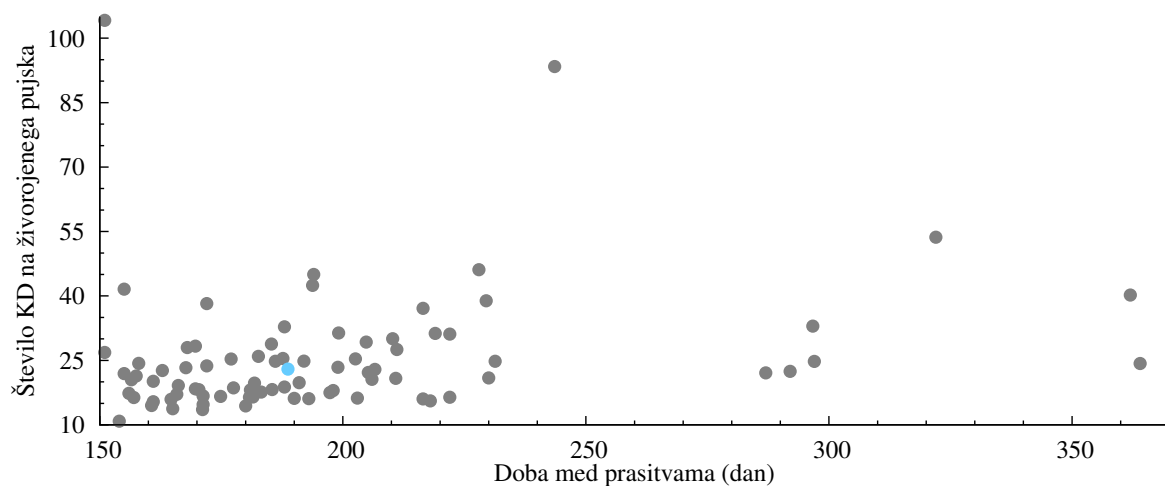
Slika 3.6: Število živorojenih pujskov pri starih svinjah na kmetijah v izbranem obdobju



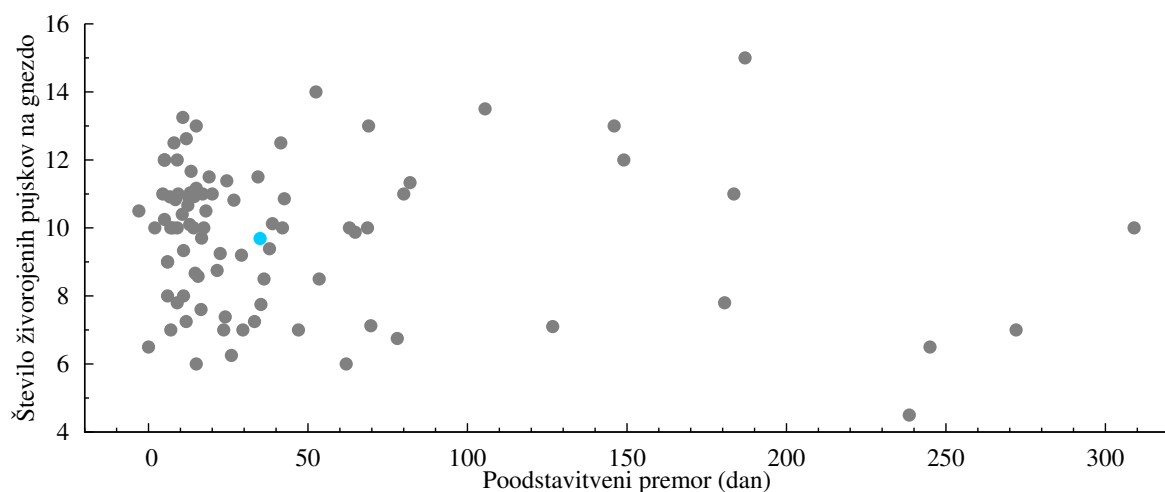
Slika 3.7: Delež mrtvorjenih pujskov pri starih svinjah na kmetijah v izbranem obdobju



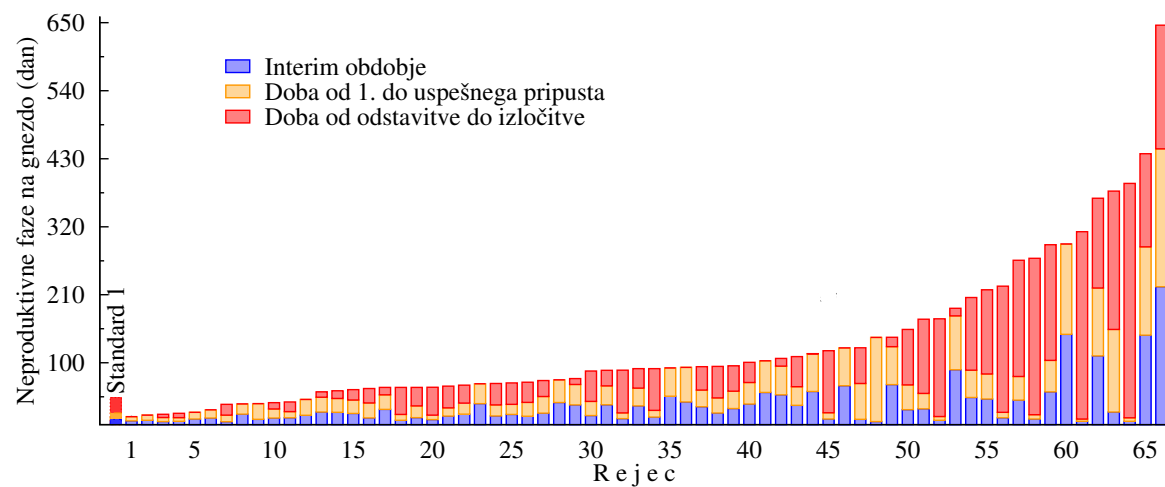
Slika 3.8: Število živorojenih pujskov na gnezdo in doba med pravitvama na kmetijah v izbranem obdobju



Slika 3.9: Število krmnih dni na živorojenega pujska in doba med pravitvama na kmetijah v izbranem obdobju

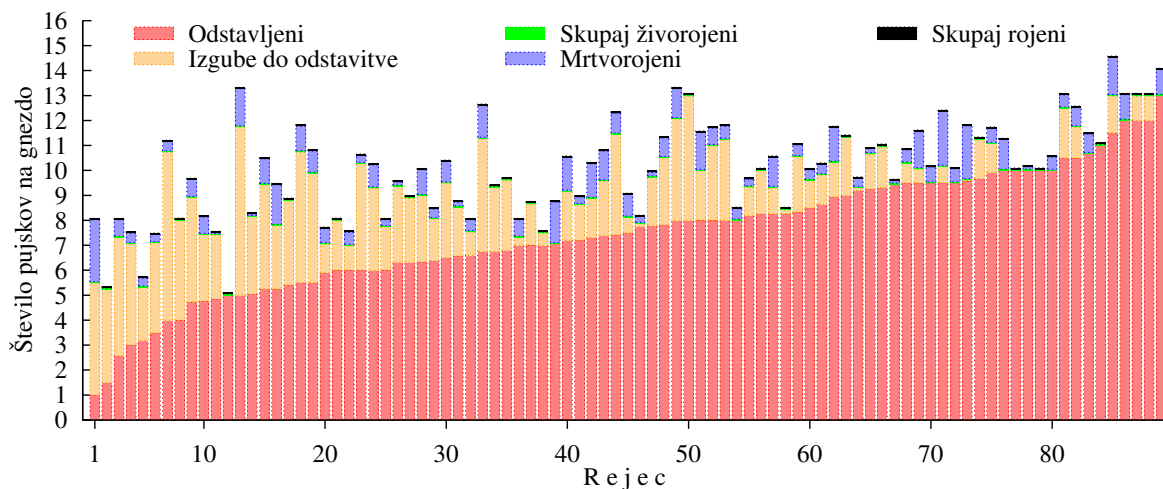


Slika 3.10: Dolžina podstavitvenega premora in število živorojenih pujskov pri starih svinjah na kmetijah v izbranem obdobju

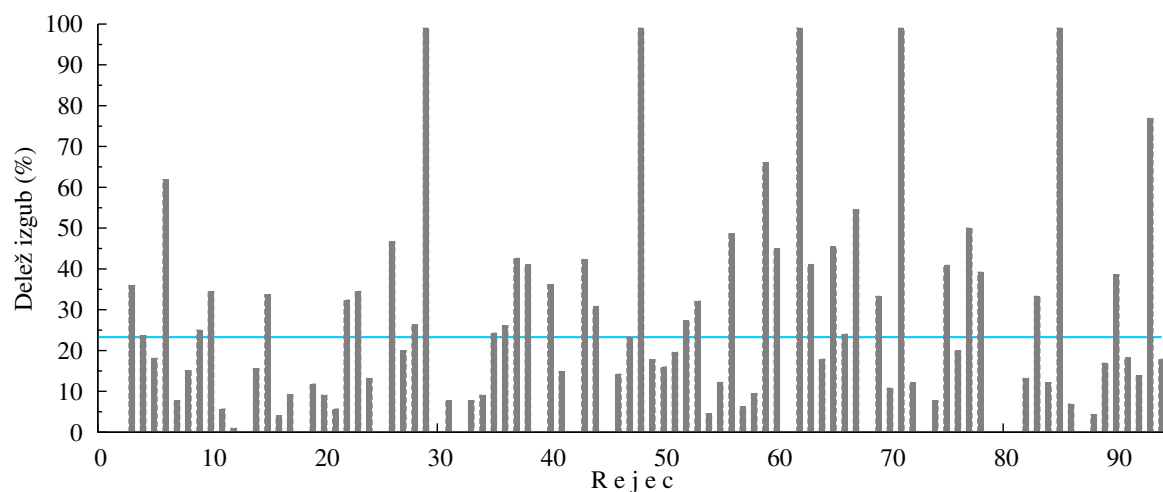


Slika 3.11: Dolžina neproduktivnih faz pri starih svinjah na kmetijah v izbranem obdobju

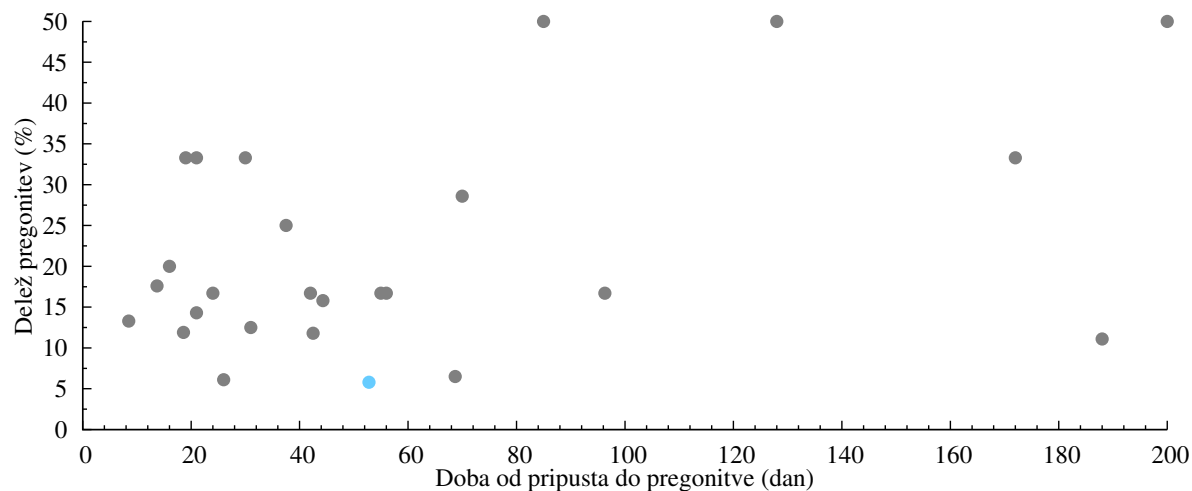
3.3 Plodnost svinj skupaj od 1.7.2020 do 30.6.2021



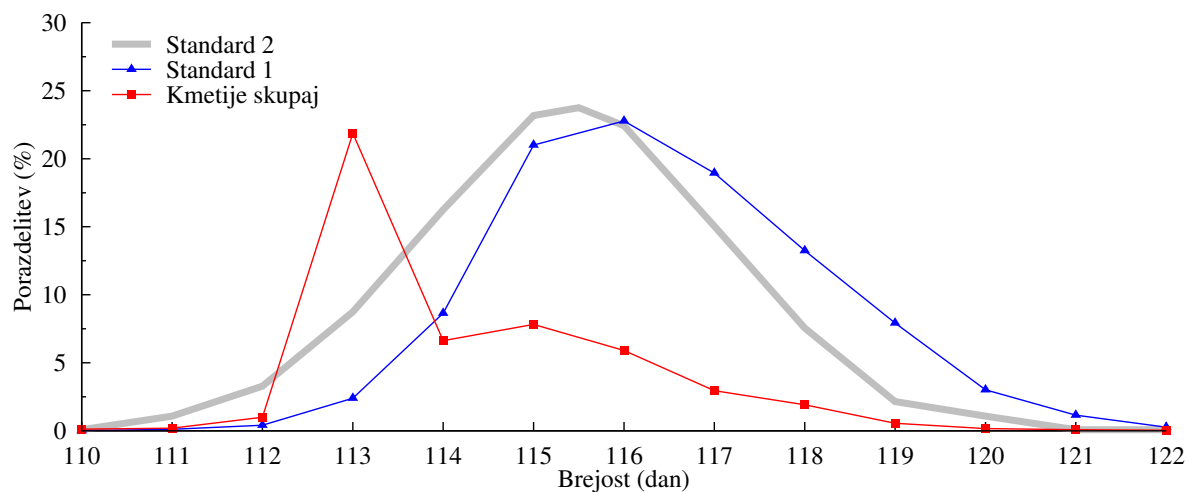
Slika 3.12: Velikost gnezda na kmetijah v izbranem obdobju



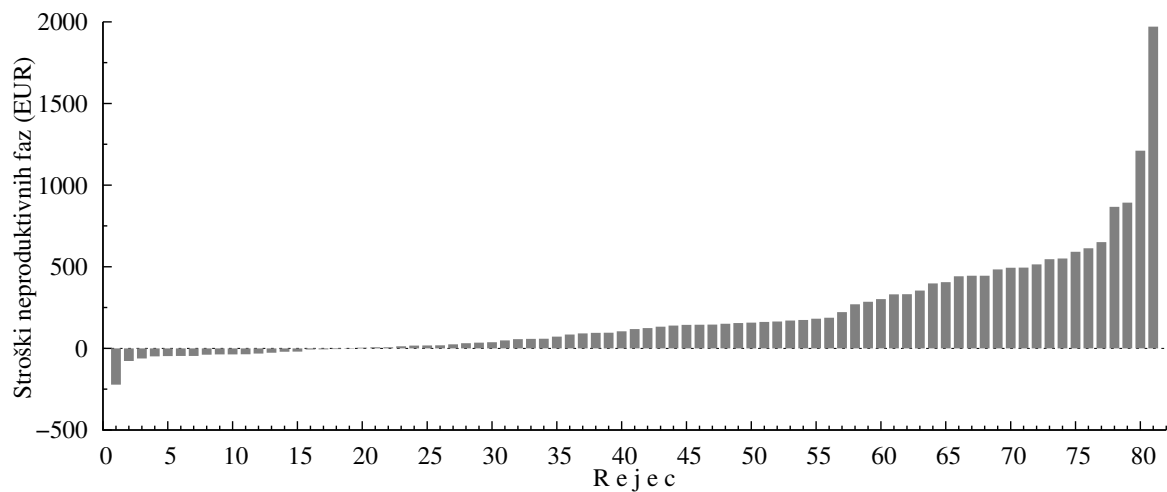
Slika 3.13: Delež izgubljenih pujskov na kmetijah v izbranem obdobju



Slika 3.14: Delež pregonitev in doba od pripusta do pregonitve na kmetijah v izbranem obdobju



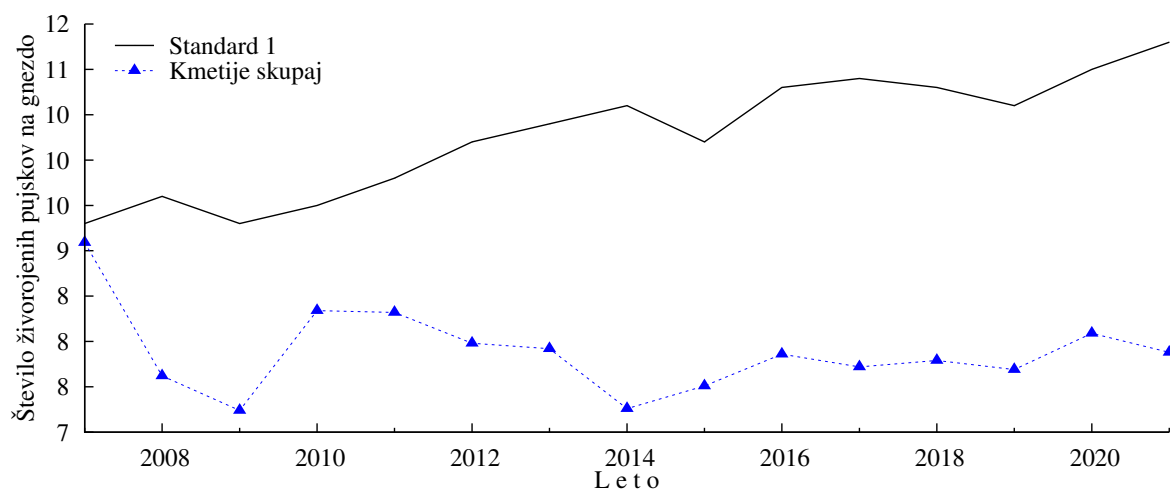
Slika 3.15: Porazdelitev dolžine brejosti na kmetijah v izbranem obdobju v primerjavi s standardi



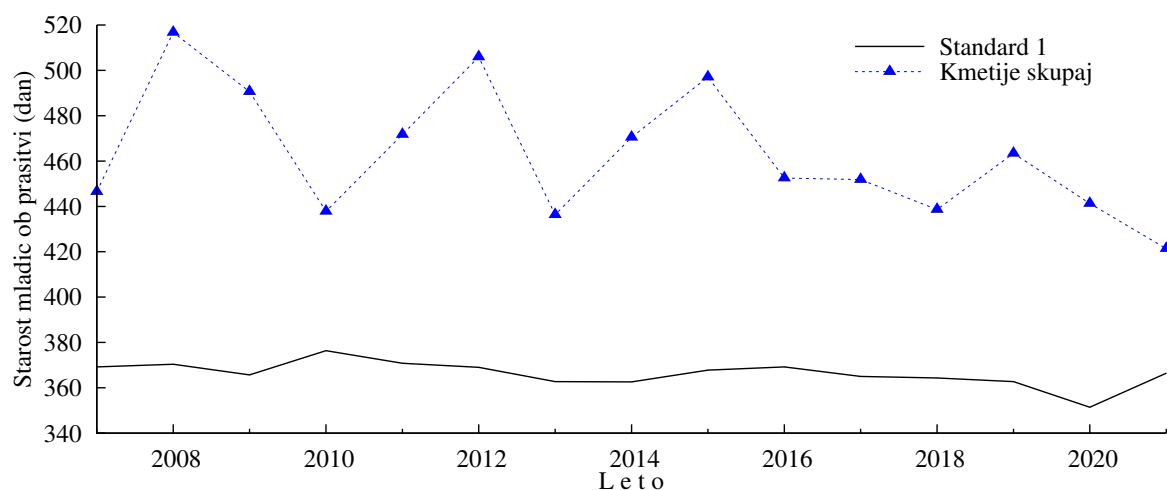
Slika 3.16: Dodatni stroški neproduktivnih faz na gnezdo v EUR na kmetijah v izbranem obdobju

3.4 Spremembe rezultatov plodnosti po letih

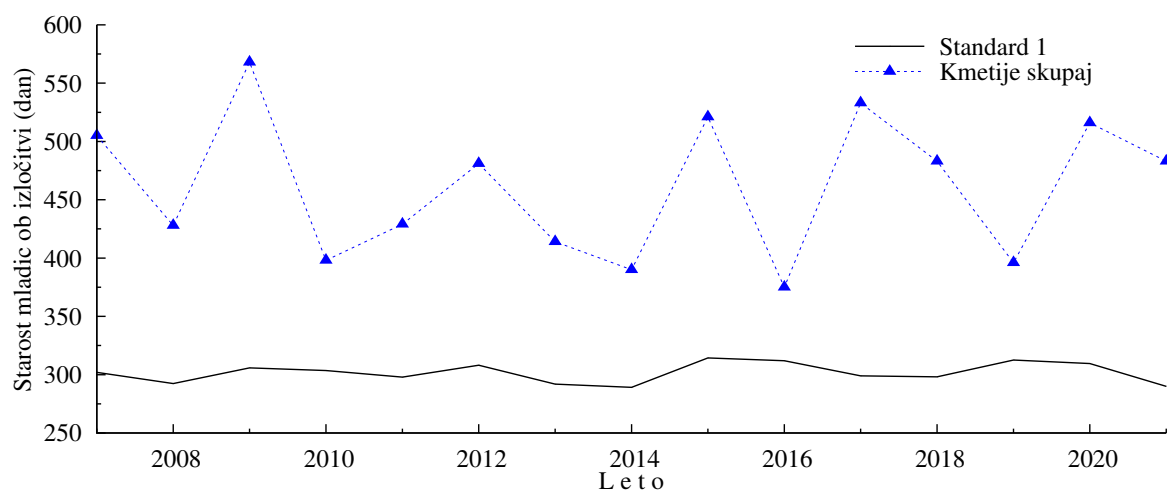
3.4.1 Plodnost mladic



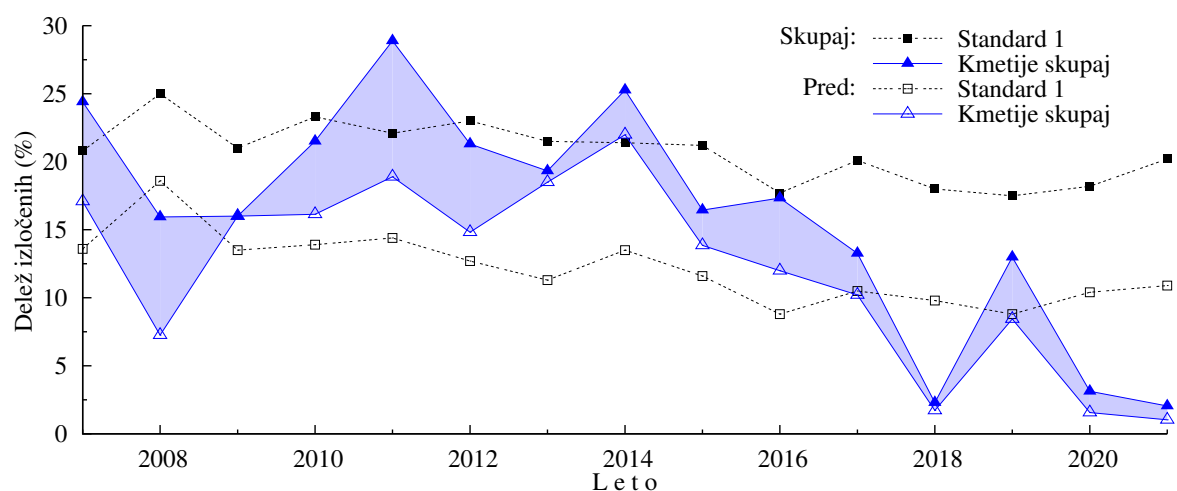
Slika 3.17: Število živorojenih pujskov pri mladicah po letih



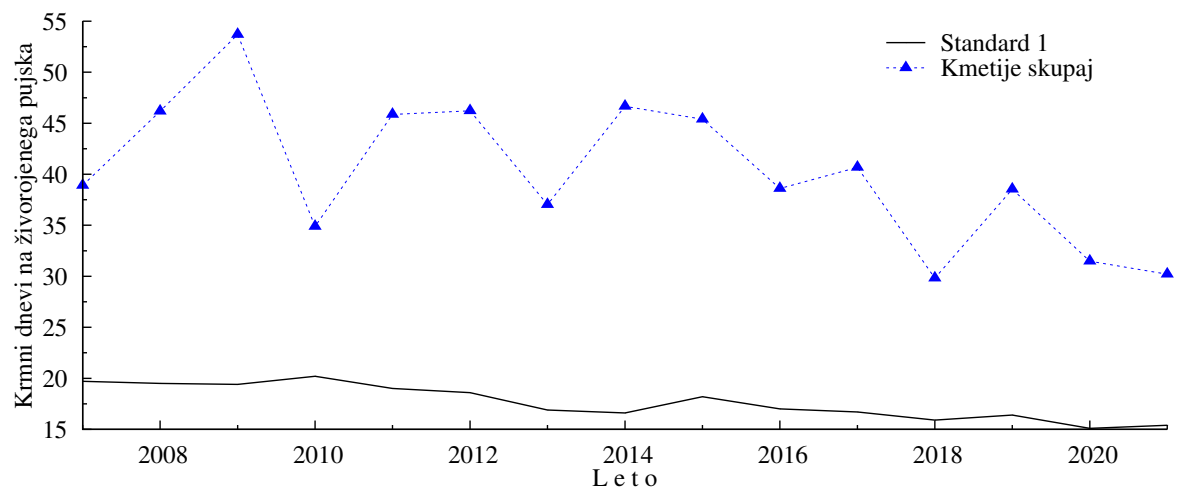
Slika 3.18: Starost mladic ob pravitvi po letih



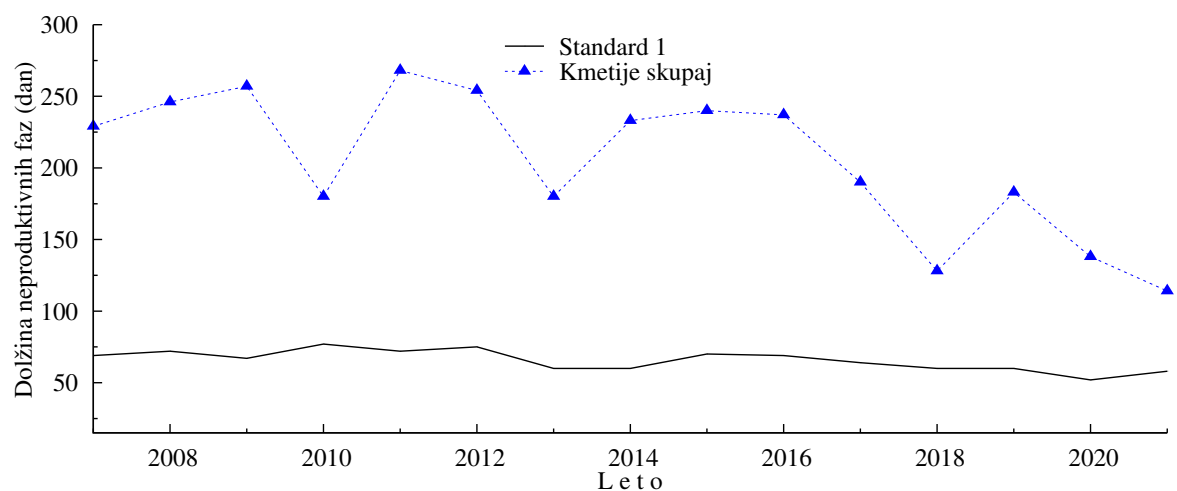
Slika 3.19: Starost mladic ob izločitvi po letih



Slika 3.20: Delež izločenih mladic pred (prazni znaki) in po (obarvani del) pripustih ter skupaj (polni znaki) po letih

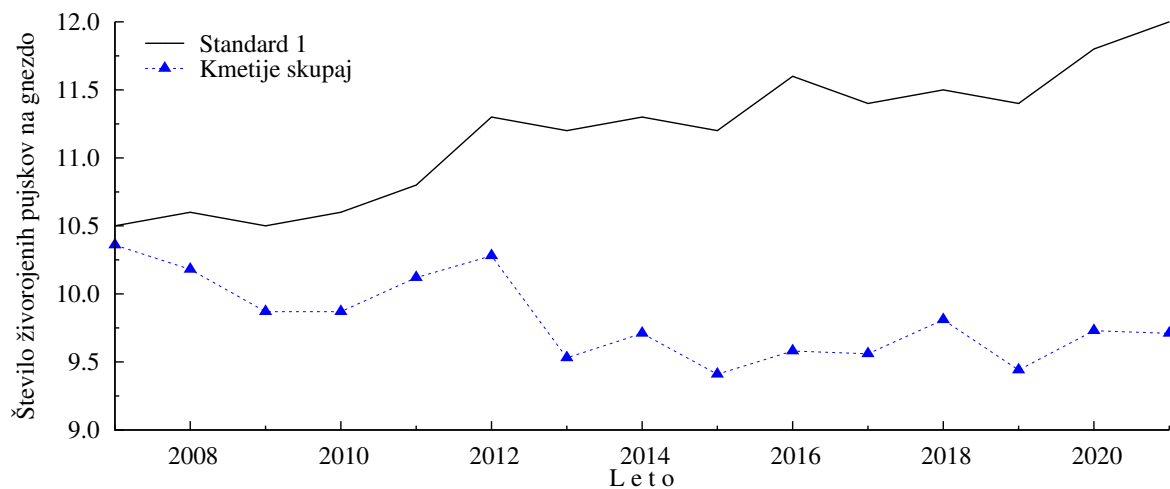


Slika 3.21: Število krmnih dni na živorojenega pujska pri mladicah po letih

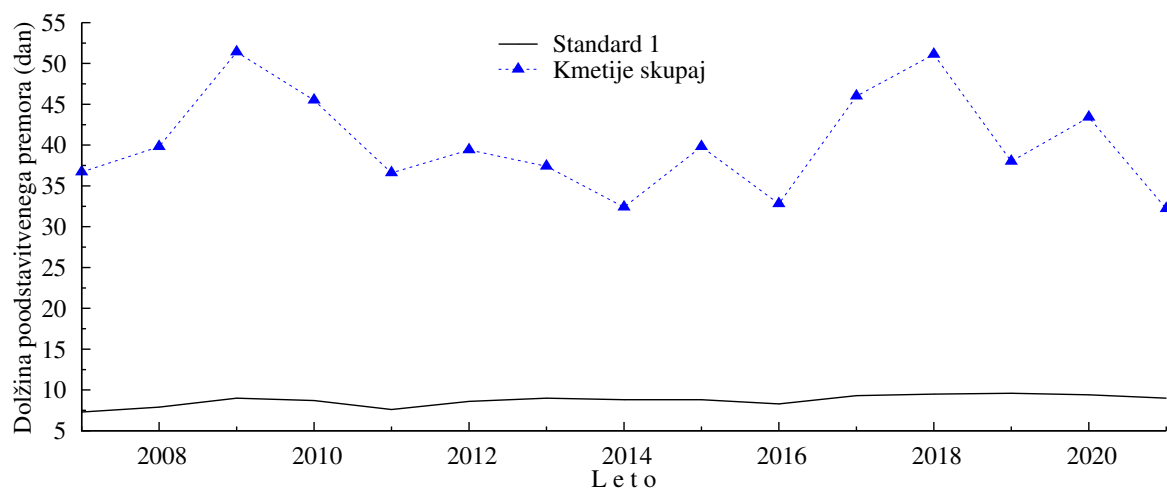


Slika 3.22: Dolžina neproduktivnih faz pri mladicah po letih

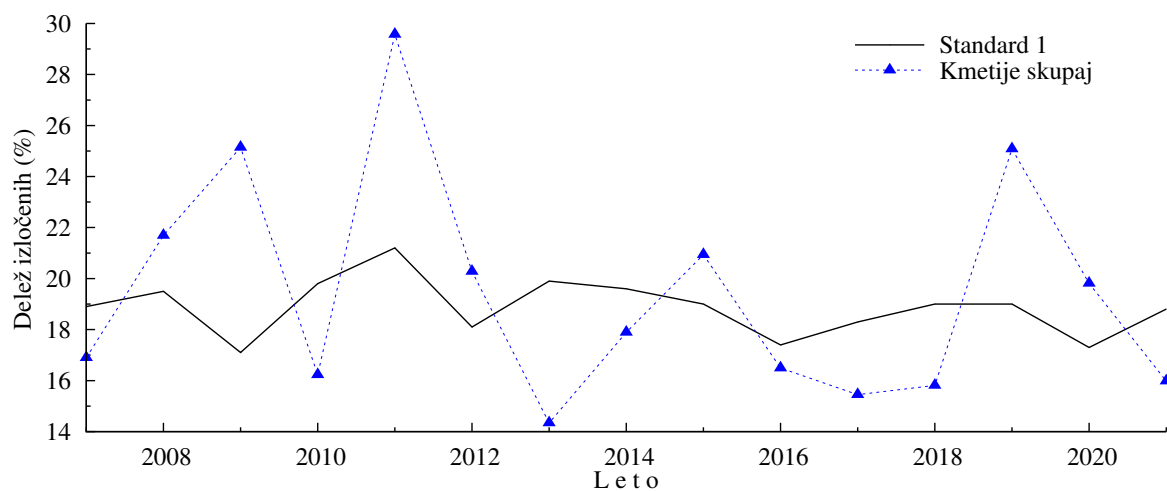
3.4.2 Plodnost starih svinj



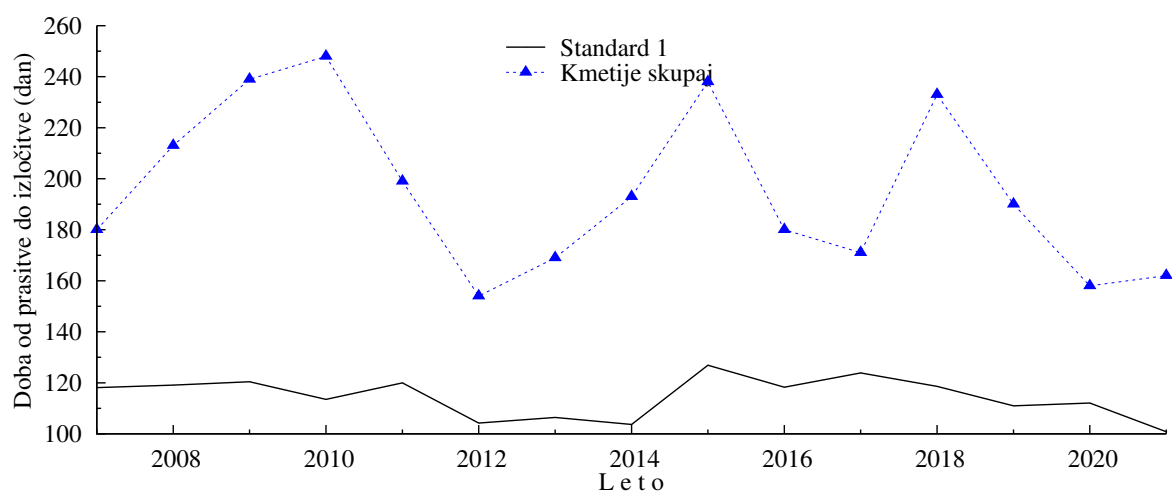
Slika 3.23: Število živorojenih pujskov pri starih svinjah po letih



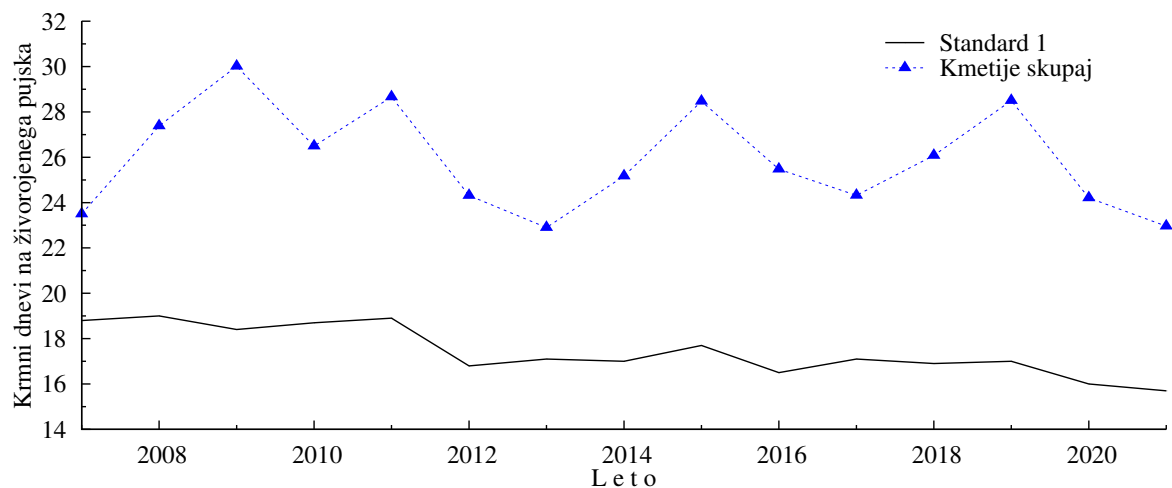
Slika 3.24: Dolžina interim obdobja pri starih svinjah po letih



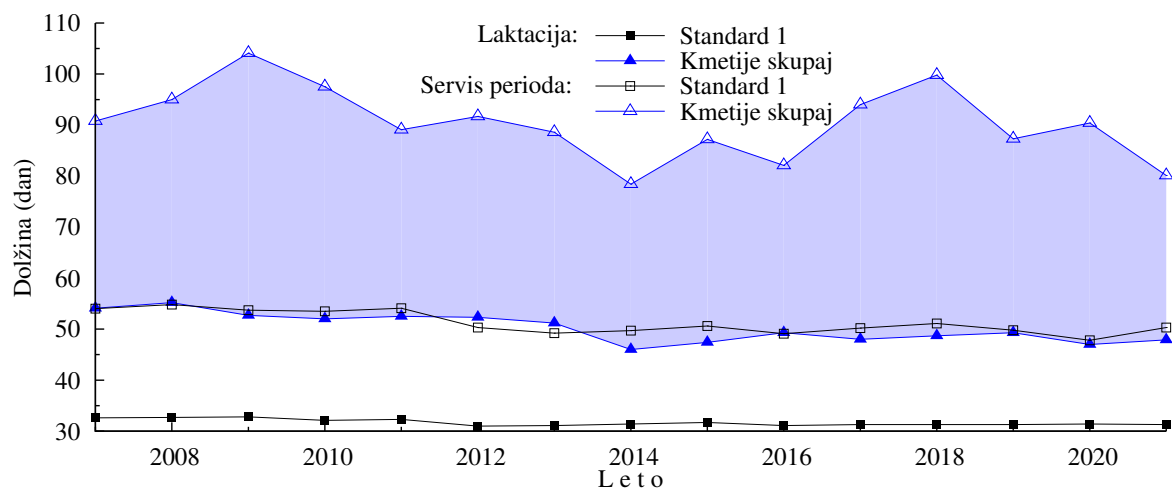
Slika 3.25: Delež izločenih starih svinj po letih



Slika 3.26: Doba od prasitve do izločitve pri starih svinjah po letih

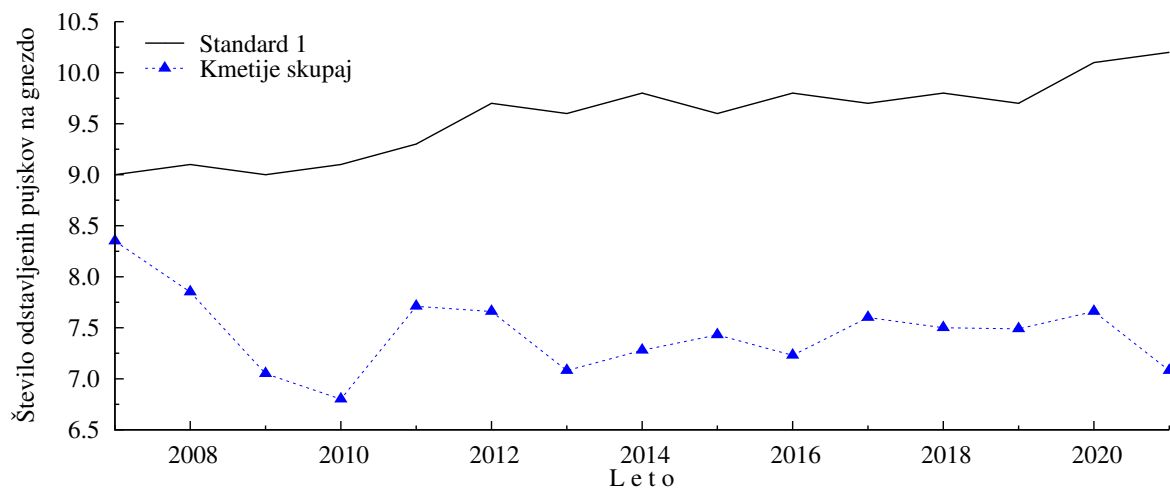


Slika 3.27: Število krmnih dni na živorojenega pujska pri starih svinjah po letih

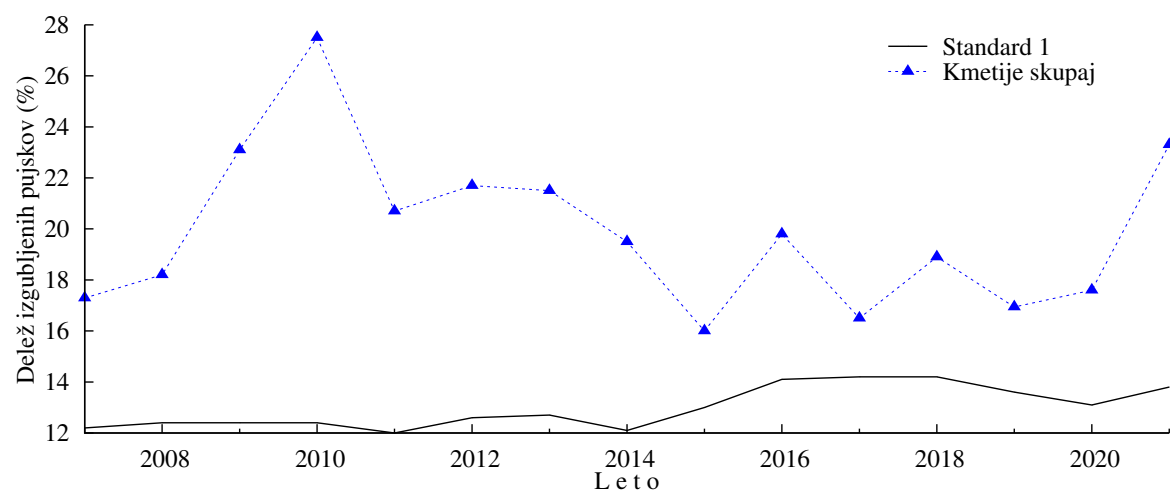


Slika 3.28: Dolžina laktacije, podstavitvenega premora (obaravni del) in servis periode pri starih svinjah po letih

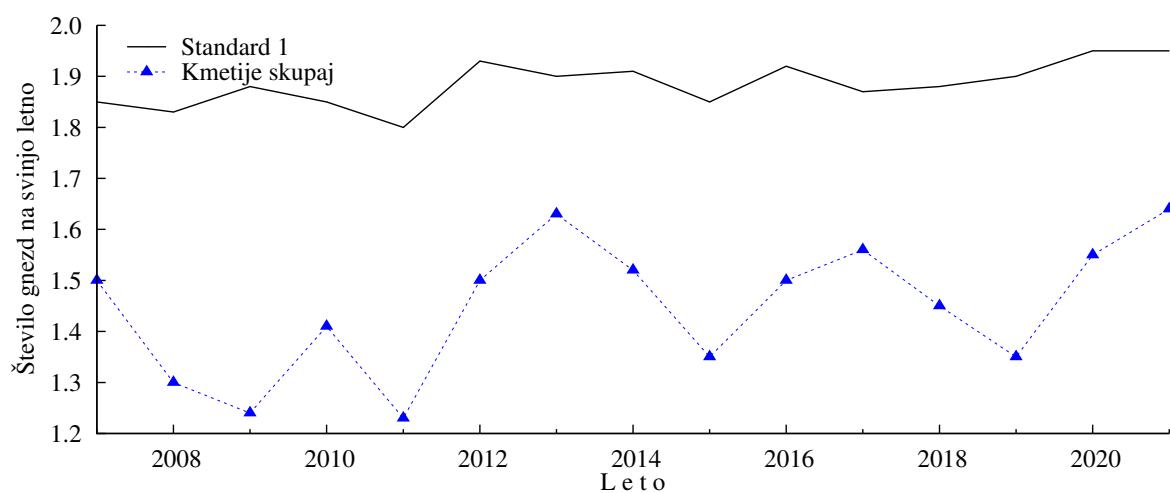
3.4.3 Plodnost svinj skupaj



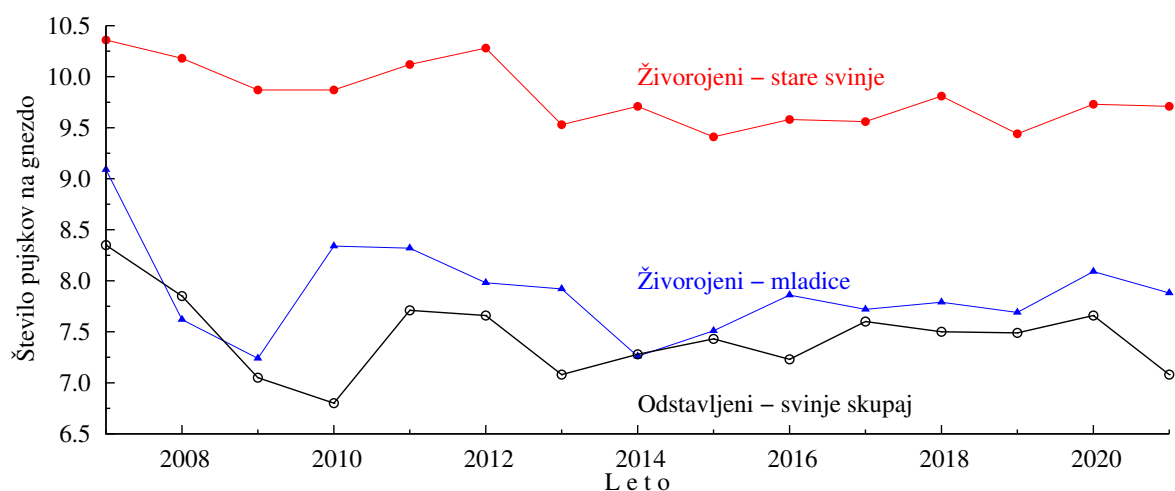
Slika 3.29: Število odstavljenih pujskov na gnezdo po letih



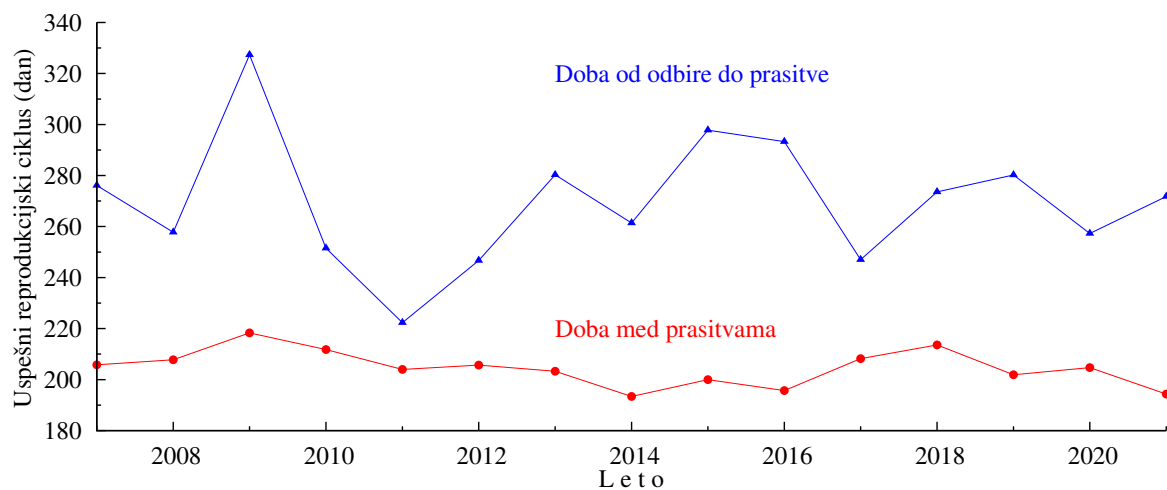
Slika 3.30: Delež izgubljenih pujskov po letih



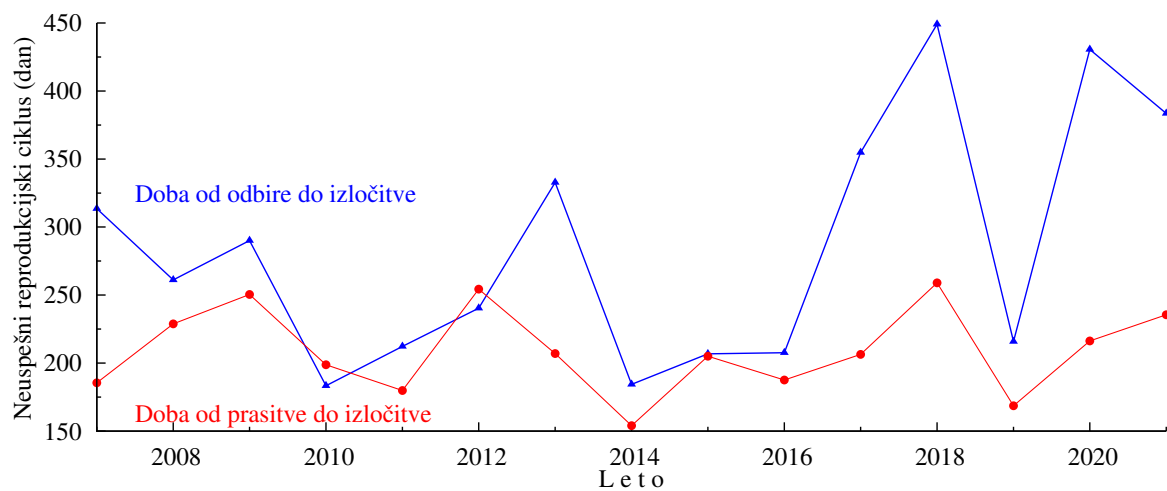
Slika 3.31: Število gnezd na svinjo letno po letih



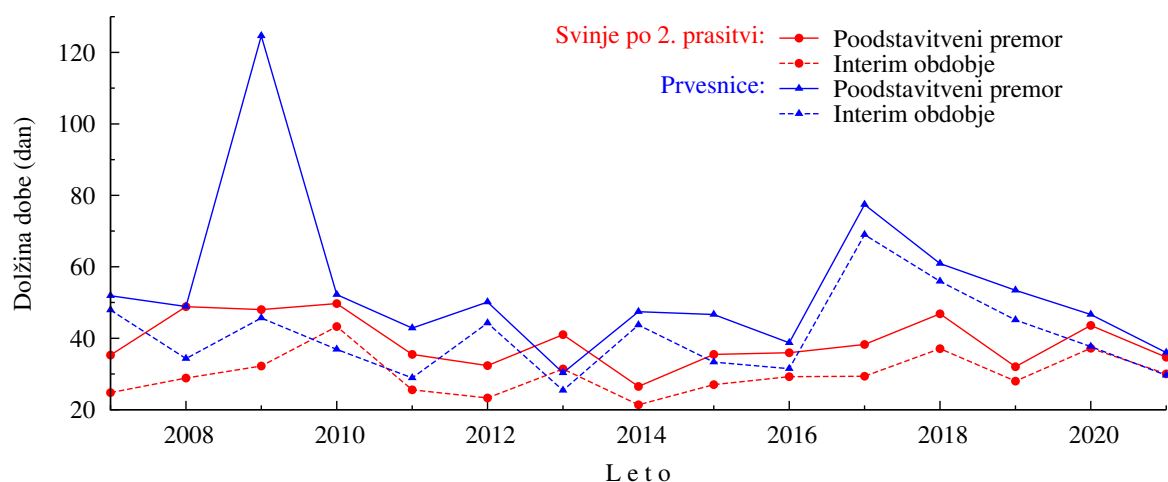
Slika 3.32: Število živorojenih in odstavljenih pujskov na gnezdo pri mladnicah in starih svinjah na kmetijah po letih



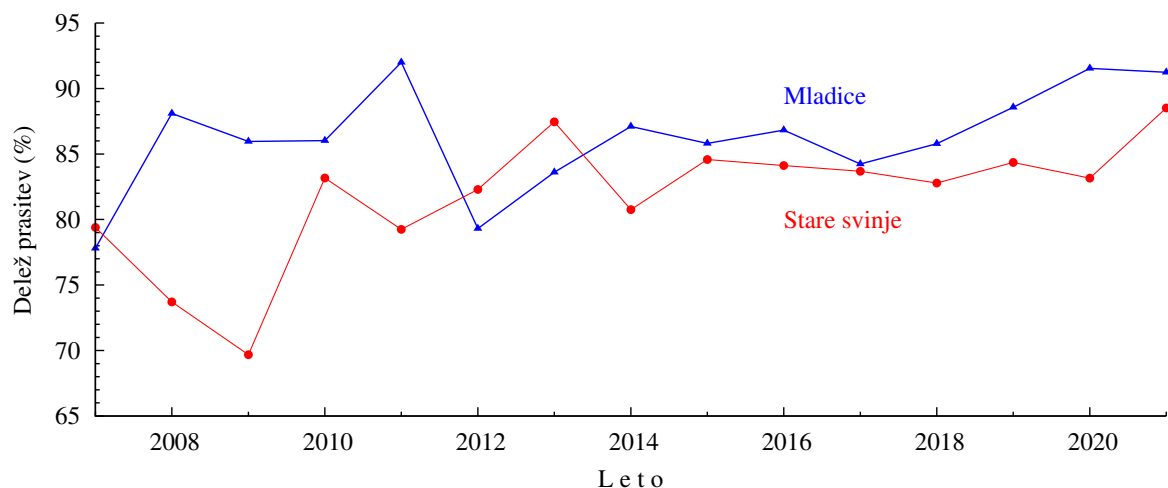
Slika 3.33: Dolžina uspešnega reprodukcijskega ciklusa pri mladnicah in starih svinjah na kmetijah po letih



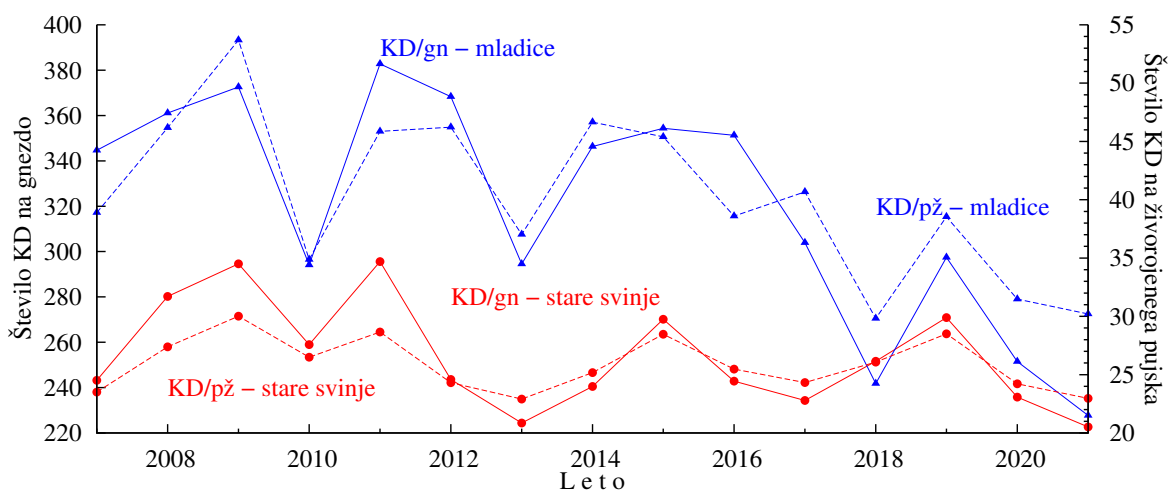
Slika 3.34: Dolžina neuspešnega reprodukcijskega ciklusa na kmetijah po letih



Slika 3.35: Dolžina poodstavitvenega premora in interim obdobja pri prvesnicah in svinjah po 2. prasitvi na kmetijah po letih

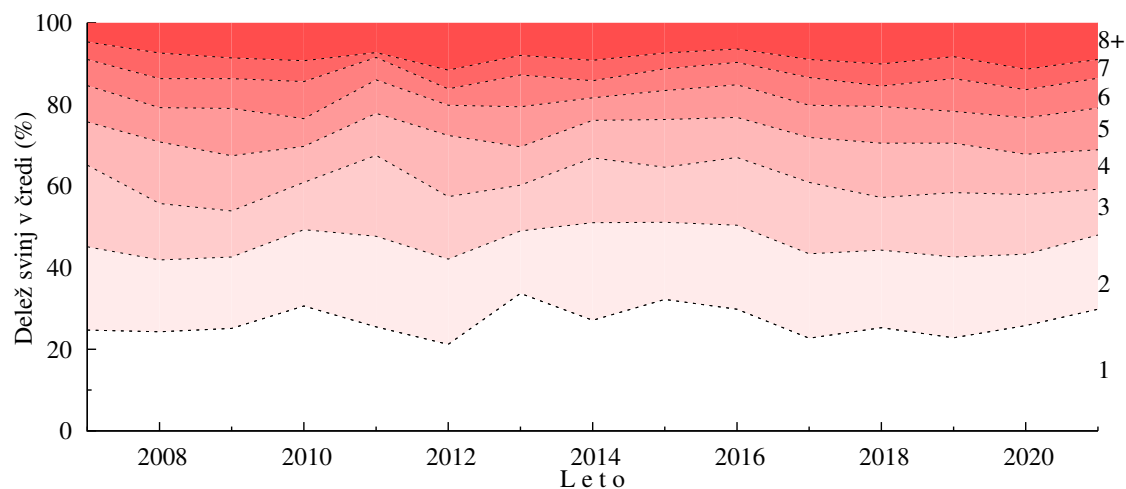


Slika 3.36: Delež prasitev pri mladiceh in starih svinjah na kmetijah po letih

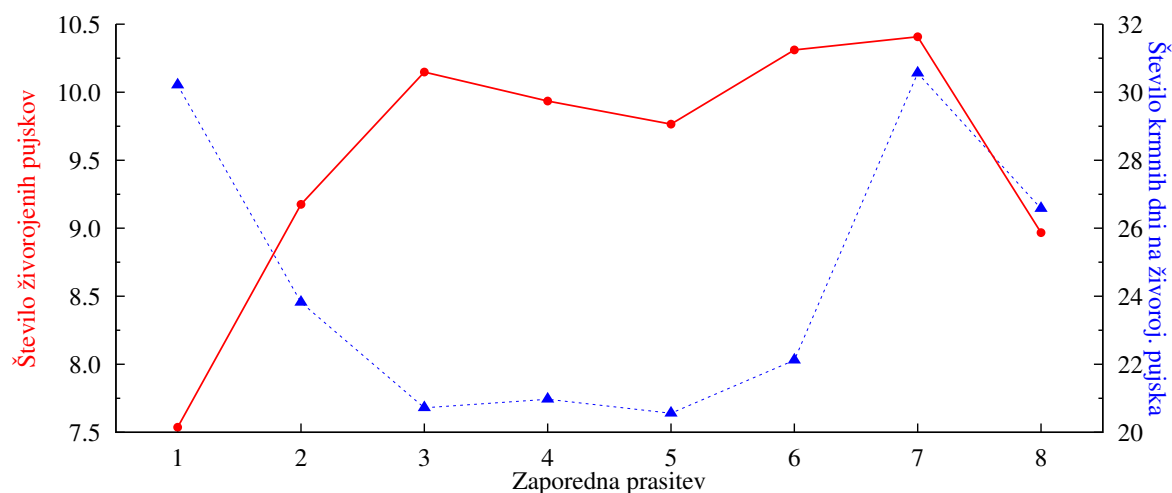


Slika 3.37: Število krmnih dni na gnezdo pri mladiceh (KD/gn - mladice) in starih svinjah (KD/gn - stare svinje) ter na živorojenega pujska pri mladiceh (KD/pž - mladice) in starih svinjah (KD/pž - stare svinje) na kmetijah po letih

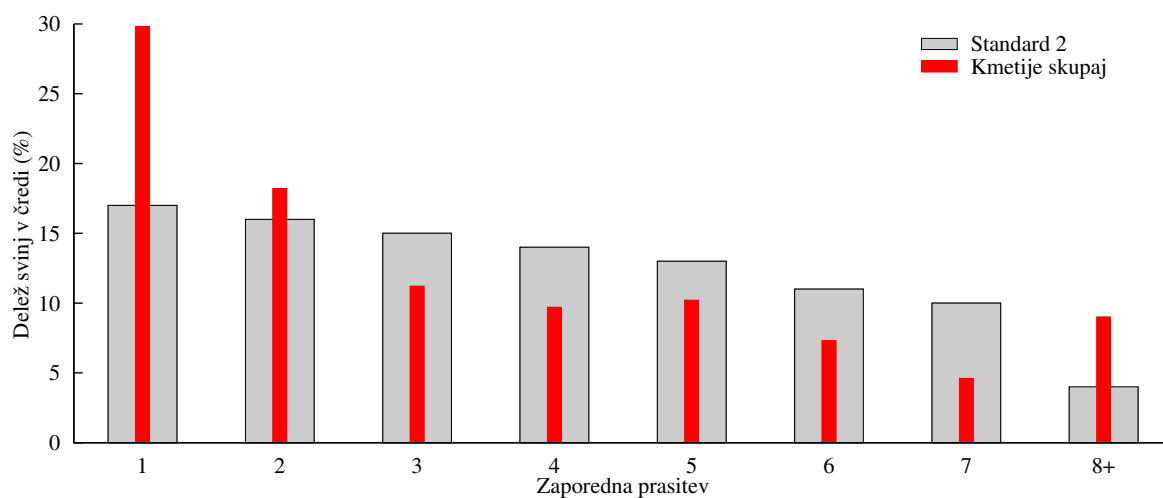
3.4.4 Starostna struktura črede



Slika 3.38: Starostna struktura črede po zaporedni prasitvi po letih



Slika 3.39: Število živorojenih pujskov in število krmnih dni na živorojenega pujska po zaporednih prasitvah v izbranem obdobju



Slika 3.40: Starostna struktura črede po zaporednih prasitvah v izbranem obdobju