
Oddelek za zootehniko

Groblje 3, Domžale

Tel.: 01-3203-920

Fax.: 01-7241-005

ANALIZA PLODNOSTI SVINJ NA KMETIJAH

ZA LETO 2020

Dokument št. 50-1/2021

VODENJE REPRODUKCIJE NA ZAVODIH:

Mag. Darja PREVALNIK

Mag. Marjeta ŽENKO

Mag. Andrej KASTELIC

Mag. Sašo SEVER

OBDELAVA IN OCENA REZULTATOV:

Prof. dr. Milena KOVAČ

Doc. dr. Špela MALOVRH

Asist. Anita ULE, mag. inž. zoot.

Suzana KRHLANKO, dipl. inž. kmet. zoot.

Lana FORTUNA, dipl. inž. kmet. zoot.

Karmen LOŽAR, dipl. inž. zoot.

Irena ULE

Meta MARUŠIČ

Stanka PAVLIN

DOMŽALE, maj 2021

Kazalo

1 Primerjava plodnosti na kmetijah v letu 2020	7
1.1 Velikost gnezda	7
1.2 Analiza pripustov	9
1.3 Analiza reprodukcijskega ciklusa	12
1.4 Analiza izločitev	18
2 Kmetije skupaj po letih	19
2.1 Velikost gnezda	19
2.2 Analiza pripustov	20
2.3 Analiza reprodukcijskega ciklusa	23
2.4 Interim obdobje in poodstavitveni premor	27
2.5 Analiza izločitev	29
3 Grafični prikaz rezultatov plodnosti	31
3.1 Mladice	31
3.2 Stare svinje	33
3.3 Svinje skupaj	35
3.4 Spremembe rezultatov plodnosti po letih	38
3.4.1 Mladice	38
3.4.2 Stare svinje	40
3.4.3 Svinje skupaj	42
3.4.4 Starostna struktura črede	45

Slike

3.1	Število živorojenih pujskov pri mladicah na kmetijah po zavodih v Sloveniji v letu 2020	31
3.2	Delež mrtvorojenih pujskov pri mladicah na kmetijah po zavodih v Sloveniji v letu 2020	31
3.3	Število živorojenih pujskov na gnezdo in starost mladic ob praritvi na kmetijah v Sloveniji v letu 2020	32
3.4	Število krmnih dni na živorojenega pujska in starost mladic ob praritvi na kmetijah v Sloveniji v letu 2020	32
3.5	Dolžina neproduktivnih faz na gnezdo pri mladicah na kmetijah v 2020	32
3.6	Število živorojenih pujskov pri starih svinjah na kmetijah po zavodih v Sloveniji v letu 2020	33
3.7	Delež mrtvorojenih pujskov pri starih svinjah na kmetijah po zavodih v Sloveniji v letu 2020	33
3.8	Število živorojenih pujskov na gnezdo in doba med praritvama na kmetijah v Sloveniji v letu 2020	33
3.9	Število krmnih dni na živorojenega pujska in doba med praritvama na kmetijah v Sloveniji v letu 2020	34
3.10	Porazdelitev dolžine interim obdobja na kmetijah v Sloveniji v letu 2020 v primerjavi s standardi	34
3.11	Dolžina interim obdobja in število živorojenih pujskov pri starih svinjah na kmetijah v Sloveniji v letu 2020	34
3.12	Dolžina neproduktivnih faz pri starih svinjah na kmetijah v Sloveniji v 2020	35
3.13	Velikost gnezda na kmetijah v 2020	35
3.14	Delež izgubljenih pujskov na kmetijah po zavodih v Sloveniji v letu 2020	35
3.15	Delež pregonitev in doba od pripusta do pregonitve na kmetijah v Sloveniji v letu 2020	36
3.16	Porazdelitev dolžine brejosti na kmetijah v Sloveniji v letu 2020 v primerjavi s standardi	36
3.17	Lastna cena odstavljenega pujska v EUR na kmetijah v Sloveniji v letu 2020	36
3.18	Dodatni stroški neproduktivnih faz na gnezdo v EUR na kmetijah v Sloveniji v letu 2020	37
3.19	Dodatni stroški neproduktivnih faz na kmetijo v 2020	37
3.20	Število živorojenih pujskov pri mladicah po letih	38
3.21	Starost mladic ob praritvi po letih	38
3.22	Starost mladic ob izločitvi po letih	38
3.23	Delež izločenih mladic pred (prazni znaki) in po (obarvani del) pripustih ter skupaj (polni znaki) po letih	39
3.24	Število krmnih dni na živorojenega pujska pri mladicah po letih	39
3.25	Število živorojenih pujskov pri starih svinjah po letih	40
3.26	Dolžina interim obdobja pri starih svinjah po letih	40
3.27	Delež izločenih starih svinj po letih	40
3.28	Doba od praritve do izločitve pri starih svinjah po letih	41
3.29	Dolžina neproduktivnih faz pri starih svinjah po letih	41
3.30	Število krmnih dni na živorojenega pujska pri starih svinjah po letih	41
3.31	Dolžina laktacije, podstavitvenega premora (obarvani del) in servis periode pri starih svinjah po letih	42

3.32	Število odstavljenih pujskov na gnezdo po letih	42
3.33	Delež izgubljenih pujskov po letih	42
3.34	Število gnezd na svinjo letno po letih	43
3.35	Število krmnih dni na odstavljenega pujska po letih	43
3.36	Število živorojenih in odstavljenih pujskov na gnezdo pri mladica in starih svinjah na kmetijah v Sloveniji po letih	43
3.37	Dolžina uspešnega reprodukcijskega ciklusa pri mladica in starih svinjah na kmetijah v Sloveniji po letih	44
3.38	Dolžina neuspešnega reprodukcijskega ciklusa na kmetijah v Sloveniji po letih	44
3.39	Dolžina poodstavitvenega premora in interim obdobja pri prvesnicah in svinjah po 2. pravitvi na kmetijah v Sloveniji po letih	44
3.40	Delež prasitev pri mladica in starih svinjah na kmetijah v Sloveniji po letih	45
3.41	Število KD na gnezdo pri mladica in starih svinjah (polna črta) ter na živorojenega pujska pri mladica in starih svinjah (črtkana črta) na kmetijah v Sloveniji po letih	45
3.42	Remont po letih	45
3.43	Starostna struktura črede po zaporedni pravitvi po letih	46
3.44	Število živorojenih pujskov in število KD na živorojenega pujska po zaporednih pravitvah	46
3.45	Starostna struktura črede po zaporednih pravitvah v 2020	46

Oznake

DOP	doba od odbire do prاسitve
DMP	doba med prاسitvama
IO	interim obdobje
PP	podstavitveni premor
DOI	doba od odbire do izločitve
DI	doba od prاسitve do izločitve
DPI	doba od pripusta do izločitve
DPP	doba od pripusta do pregonitve
kDMP	korigirana doba med prاسitvama
kDOP	korigirana doba od odbire do prاسitve
G_S	število gnezd na svinjo v proizvodnem obdobju
G_L	število gnezd na svinjo letno
$P_{\dot{Z}}$	število živorojenih pujskov
P_O	število odstavljenih pujskov
KD	krmni dnevi
PF	produktivne faze
št.	število
Sk.	skupaj
gn.	gnezdo
prip. (pr.)	pripust
pras.	prاسitev
Izl.	izločitev, izločenih
Usp.	uspešni
Lakt.	laktacija
Preg.	pregonitev

Šifrant izločitev

8	izostanek bukanja
9	nebreje-nepregonjene
10	večkratna pregonitev

Opombe: V analizo plodnosti svinj na kmetijah nismo vključili rejce 31303, 31388 in 41784.

Poglavje 1

Primerjava plodnosti na kmetijah v letu 2020

1.1 Velikost gnezda

Tabela 1.1: Velikost gnezda na kmetijah

Rejec	MLADICE			STARE SVINJE						SKUPAJ		
	Št. pras.	DOP (dni)	$P_{\bar{z}}$ / gn.	Št. pras.	DMP (dni)	Lakt. (dni)	IO (dni)	PP (dni)	$P_{\bar{z}}$ / gn.	Št. pras.	P_O / gn.	Izgube (%)
30023	21	197.7	8.19	52	165.9	33.5	10.4	17.3	11.19	73	8.67	16.0
30037	18	141.3	9.50	69	177.2	42.7	10.7	18.8	11.32	87	10.25	6.3
30077	27	193.1	11.89	148	165.0	31.1	7.1	16.9	12.26	175	9.99	18.1
30152	28	144.5	9.32	183	158.8	29.5	6.7	14.3	9.51	211	8.95	5.6
30504	46	106.4	11.83	181	154.1	28.9	6.0	8.9	12.98	227	10.78	15.4
30511	12	131.8	10.58	34	196.5	33.9	30.3	48.5	12.59	46	10.52	12.8
30745	11	189.7	12.64	58	158.8	29.1	8.2	12.6	10.81	69	9.62	13.3
40002	15	139.9	10.87	68	166.2	36.1	8.7	12.9	11.44	83	11.08	2.2
40005	16	101.7	10.38	96	157.6	32.0	5.9	9.2	12.14	112	11.08	6.8
40017	35	140.1	11.14	109	168.3	32.2	8.4	18.1	11.92	144	9.28	20.9
40164	8	173.1	9.75	55	163.1	34.7	6.2	13.5	11.82	63	9.13	21.0
40222	17	111.1	9.53	90	155.4	29.1	5.2	10.9	12.70	107	10.07	17.4
40267	25	127.4	10.84	55	158.3	30.7	5.6	11.0	10.69	80	9.15	14.8
40504	5		8.40	20	226.5	39.6	27.7	72.3	10.10	25	8.28	15.2
40545	10	217.6	10.20	56	182.8	35.1	26.5	33.2	12.88	66	10.77	13.6
40620	31	139.5	11.35	128	159.3	31.5	6.9	11.6	11.10	159	9.98	10.5
40649	6	141.7	13.50	52	156.1	29.5	8.1	10.7	13.08	58	11.78	10.2
40825	16	181.4	13.13	48	173.3	37.5	10.8	21.0	12.46	64	10.42	17.5
40895	17	116.5	14.00	70	150.5	26.0	5.5	8.6	13.53	87	11.40	16.3
31007	26	155.0	11.50	60	162.8	30.3	5.9	16.7	11.13	86	10.38	7.7
31025	10	187.9	11.60	51	168.5	38.6	9.1	14.5	12.53	61	10.26	17.1
31026	28	172.5	11.50	99	165.3	33.3	9.9	15.7	13.48	127	10.31	20.9
31060	19	128.8	11.32	47	162.9	33.9	6.1	13.7	12.43	66	8.85	26.9
31084	11	173.8	10.18	38	164.3	30.0	14.9	19.0	11.26	49	9.14	17.0
31301	41	183.5	11.56	255	166.2	29.1	10.5	20.9	10.46	296	8.86	16.5
31305	55	140.2	11.25	223	158.7	27.1	7.7	15.8	11.83	278	10.99	6.2
31306	9	232.6	11.11	18	181.6	37.1	6.5	28.4	12.83	27	8.33	32.0
31309	19	140.7	10.84	81	160.1	35.4	5.9	9.0	12.56	100	11.06	9.6
31311	17	142.7	11.94	67	162.5	32.5	8.8	14.9	12.36	84	10.88	11.3
31312	30	156.2	11.13	114	161.2	31.4	6.5	13.9	11.98	144	10.86	8.0
31313	9	241.0	8.67	46	200.4	42.2	30.7	44.5	10.17	55	7.69	22.5
31314	7	164.4	13.29	69	168.9	34.9	7.1	18.8	12.35	76	10.30	17.1
31316	30	145.7	9.00	100	161.3	29.3	8.8	16.1	11.03	130	9.68	8.3
31353	23	129.9	10.70	59	159.4	29.9	8.7	13.8	11.98	82	9.71	16.5
31358	15	148.2	11.87	92	158.9	26.4	7.2	16.8	12.87	107	10.22	19.7
31359	8	152.1	12.75	37	164.2	33.0	6.7	16.7	12.86	45	11.09	13.7
31387	32	175.3	8.91	84	171.9	43.6	8.1	11.8	11.01	116	8.97	14.0
31419	11	149.5	9.82	24	180.7	34.8	23.9	30.6	10.75	35	9.29	11.2
31620	15	136.5	13.07	58	154.9	30.9	8.2	8.6	13.22	73	10.79	18.2
31984	16	138.3	10.19	58	166.8	30.9	8.6	19.4	9.88	74	9.36	5.8
41638	23	221.3	11.35	182	159.2	26.4	4.8	17.1	11.14	205	10.88	2.6
41680	122	147.5	11.18	139	156.1	29.7	5.8	11.8	12.73	261	10.72	10.7

Rejec	MLADICE			STARE SVINJE						SKUPAJ		
	Št. pras.	DOP (dni)	$P_{\bar{z}}$ /gn.	Št. pras.	DMP (dni)	Lakt. (dni)	IO (dni)	PP (dni)	$P_{\bar{z}}$ /gn.	Št. pras.	P_O /gn.	Izgube (%)
32001	3	122.0	14.33	36	177.4	31.5	18.9	30.8	11.42	39	9.44	18.9
32003	8	165.3	8.88	9	196.9	30.3	46.0	51.0	12.22	17	9.88	7.2
32010	11	204.5	10.82	40	168.2	28.4	8.5	24.0	12.53	51	9.71	20.2
33310	25	159.9	11.36	120	164.7	32.9	11.7	15.4	11.86	145	10.10	14.2
Skupaj	987	152.6	10.99	3778	163.7	31.4	8.9	16.4	11.77	4765	10.09	13.1

1.2 Analiza pripustov

Tabela 1.2: Analiza pripustov mladic na kmetijah

Rejec	S K U P A J							PRVI PRIPUST				DRUGI IN VIŠJI			
	Št. prip.	Usp. prip. (%)	Izl. po prip. (%)	Preg. (%)	DPI (dni)	DPP (dni)	$P_{\bar{z}}$ / prip.	Št. prip.	Prvi (%)	Usp. (%)	$P_{\bar{z}}$ / prip.	Št. prip.	≥ 2 (%)	Usp. (%)	$P_{\bar{z}}$ / prip.
30023	31	74.2	9.7	16.1	67.0	30.6	6.2	26	83.9	76.9	6.7	5	16.1	60.0	3.6
30037	33	81.8		18.2		19.7	7.8	26	78.8	80.8	7.2	7	21.2	85.7	9.1
30077	55	47.3	10.9	40.0	103.5	34.9	5.6	34	61.8	32.4	3.7	21	38.2	71.4	8.7
30152	43	60.5	16.3	23.3	90.3	38.8	5.7	36	83.7	66.7	6.3	7	16.3	28.6	3.1
30504	56	82.1	7.1	10.7	46.5	51.2	9.7	49	87.5	85.7	10.0	7	12.5	57.1	7.6
30511	8	87.5					10.3	6	75.0	83.3	9.2	2	25.0	100.0	13.5
30745	18	61.1	5.6	22.2	38.0	35.3	7.7	12	66.7	91.7	11.6	6	33.3		
40002	176	79.5	6.3	14.2	51.0	29.1	8.6	154	87.5	79.9	8.6	22	12.5	77.3	10.1
40005	0							0				0			
40017	45	77.8	8.9	13.3	136.8	72.0	8.7	36	80.0	83.3	9.4	9	20.0	55.6	5.8
40164	134	67.2	9.7	23.1	62.9	37.7	6.2	107	79.9	67.3	7.1	27	20.2	66.7	1.3
40222	95	55.8	8.4	35.8	44.9	31.0	5.3	63	66.3	61.9	5.7	32	33.7	43.8	5.0
40267	155	74.8	7.1	18.1	29.3	28.1	8.1	127	81.9	75.6	7.7	28	18.1	71.4	8.8
40504	6	66.7		33.3		24.0	5.2	5	83.3	60.0	5.2	1	16.7	100.0	5.0
40545	13	76.9		23.1		49.0	7.9	10	76.9	70.0	7.0	3	23.1	100.0	10.7
40620	35	88.6	2.9	8.6	263.0	24.3	10.1	30	85.7	93.3	10.4	5	14.3	60.0	7.8
40649	1	100.0					14.0	0				1	100.0	100.0	14.0
40825	27	85.2	7.4	7.4	47.0	20.5	11.2	25	92.6	84.0	10.9	2	7.4	100.0	15.0
40895	16	68.8	12.5	18.8	46.5	39.7	9.8	13	81.3	76.9	11.0	3	18.8	33.3	4.7
31007	53	79.2	17.0	3.8	60.2	29.5	9.2	51	96.2	80.4	9.3	2	3.8	50.0	
31025	19	52.6	10.5	36.8	37.5	30.9	6.1	10	52.6	50.0	5.6	9	47.4	55.6	6.7
31026	28	78.6	10.7	10.7	94.3	27.7	9.4	27	96.4	77.8	9.3	1	3.6	100.0	12.0
31060	73	74.0	15.1	11.0	121.0	56.6	8.3	65	89.0	78.5	8.8	8	11.0	37.5	4.3
31084	21	52.4	9.5	38.1	125.5	35.1	5.3	13	61.9	69.2	7.0	8	38.1	25.0	2.6
31301	54	75.9	14.8	7.4	142.8	117.3	8.8	43	79.6	86.1	9.9	11	20.4	36.4	4.6
31305	71	76.1	4.2	18.3	28.3	50.0	8.6	53	74.7	83.0	9.3	18	25.4	55.6	6.3
31306	54	57.4	24.1	18.5	127.2	62.6	6.4	42	77.8	54.8	5.6	12	22.2	66.7	8.0
31309	124	91.1	1.6	7.3	58.5	26.0	9.9	116	93.6	91.4	9.8	8	6.5	87.5	10.1
31311	28	60.7	7.1	32.1	138.0	80.7	7.3	21	75.0	57.1	6.7	7	25.0	71.4	9.0
31312	45	66.7	24.4	8.9	140.9	56.5	7.4	39	86.7	66.7	7.3	6	13.3	66.7	8.2
31313	18	50.0	5.6	38.9	38.0	38.4	4.3	11	61.1	54.6	3.6	7	38.9	42.9	5.4
31314	13	53.9	15.4	30.8	76.5	151.0	7.2	13	100.0	53.9	7.2	0			
31316	348	79.9	9.8	10.3	71.4	37.2	7.2	316	90.8	80.7	7.3	32	9.2	71.9	6.7
31353	22	86.4	4.6	9.1	73.0	22.0	9.6	19	86.4	89.5	10.5	3	13.6	66.7	3.7
31358	6	33.3	16.7	50.0	29.0	78.3	4.0	3	50.0	66.7	8.0	3	50.0		
31359	6	100.0					13.5	6	100.0	100.0	13.5	0			
31387	43	79.1	9.3	11.6	156.5	33.0	7.1	38	88.4	79.0	6.9	5	11.6	80.0	8.6
31419	9	77.8		22.2		38.0	7.8	7	77.8	85.7	8.6	2	22.2	50.0	5.0
31620	0							0				0			
31984	0							0				0			
41638	54	38.9	13.0	46.3	99.4	84.7	4.4	31	57.4	41.9	4.8	23	42.6	34.8	4.0
41680	13	46.2		46.2		41.8	5.6	8	61.5	50.0	6.4	5	38.5	40.0	4.4
32001	5	60.0	40.0		188.0		8.6	4	80.0	75.0	10.8	1	20.0		
32003	16	93.8	6.3		75.0		8.3	16	100.0	93.8	8.3	0			
32010	70	67.1	5.7	27.1	146.8	35.2	7.3	46	65.7	65.2	6.8	24	34.3	70.8	7.9
33310	36	83.3	2.8	13.9	120.0	32.2	9.5	27	75.0	81.5	9.5	9	25.0	88.9	9.8
Skupaj	2176	73.0	9.1	17.5	87.5	43.1	8.0	1784	82.0	75.9	8.3	392	18.0	60.0	6.8

Tabela 1.3: Analiza pripustov starih svinj na kmetijah

Rejec	S K U P A J							PRVI PRIPUST				DRUGI IN VIŠJI			
	Št. prip.	Usp. prip. (%)	Izl. po prip. (%)	Preg. (%)	DPI (dni)	DPP (dni)	$P_{\bar{z}}$ / prip.	Št. prip.	Prvi (%)	Usp. (%)	$P_{\bar{z}}$ / prip.	Št. prip.	≥ 2 (%)	Usp. (%)	$P_{\bar{z}}$ / prip.
30023	78	71.8	12.8	12.8	146.5	76.3	8.1	65	83.3	73.9	8.3	13	16.7	61.5	6.7
30037	104	67.3	7.7	25.0	94.1	35.7	7.6	72	69.2	80.6	9.2	32	30.8	37.5	4.1
30077	225	65.3	6.7	28.0	108.5	46.8	8.0	171	76.0	66.7	8.2	54	24.0	61.1	7.3
30152	240	77.5	5.8	16.3	88.1	47.2	7.3	199	82.9	80.9	7.6	41	17.1	61.0	5.6
30504	204	85.8	3.9	9.8	30.4	46.6	11.2	185	90.7	87.6	11.3	19	9.3	68.4	9.6
30511	43	79.1		18.6		102.3	9.9	36	83.7	77.8	9.8	7	16.3	85.7	10.4
30745	96	65.6	8.3	19.8	98.4	35.8	7.1	80	83.3	67.5	7.3	16	16.7	56.3	5.7
40002	91	72.5	11.0	15.4	71.2	32.3	8.3	78	85.7	75.6	8.6	13	14.3	53.9	6.4
40005	120	83.3	5.8	10.8	80.3	33.1	10.1	109	90.8	83.5	10.0	11	9.2	81.8	10.7
40017	167	66.5	14.4	19.2	93.7	50.3	7.9	131	78.4	64.9	7.8	36	21.6	72.2	8.3
40164	61	90.2	4.9	4.9	112.7	98.0	10.7	55	90.2	90.9	10.6	6	9.8	83.3	10.8
40222	123	74.0	7.3	17.1	74.9	28.8	9.3	99	80.5	81.8	10.3	24	19.5	41.7	5.3
40267	73	69.9	8.2	21.9	77.0	34.5	7.4	57	78.1	71.9	7.6	16	21.9	62.5	6.9
40504	41	48.8	14.6	36.6	109.5	106.0	4.9	28	68.3	50.0	4.9	13	31.7	46.2	5.1
40545	66	84.9	3.0	10.6	101.0	33.3	11.0	55	83.3	87.3	11.2	11	16.7	72.7	10.0
40620	156	82.7	5.1	12.2	95.5	41.2	9.2	137	87.8	84.7	9.5	19	12.2	68.4	7.2
40649	56	91.1		8.9		31.6	11.8	52	92.9	92.3	12.1	4	7.1	75.0	7.5
40825	68	69.1	5.9	25.0	66.8	33.1	8.6	51	75.0	70.6	8.8	17	25.0	64.7	8.2
40895	83	84.3	8.4	7.2	91.9	52.0	11.4	75	90.4	89.3	12.1	8	9.6	37.5	5.1
31007	84	79.8	9.5	10.7	63.5	58.0	8.9	73	86.9	80.8	9.0	11	13.1	72.7	8.3
31025	62	85.5	4.8	9.7	135.0	44.8	10.6	56	90.3	89.3	11.2	6	9.7	50.0	4.8
31026	123	79.7	8.1	12.2	72.6	44.7	10.7	107	87.0	81.3	10.9	16	13.0	68.8	9.6
31060	71	66.2	11.3	21.1	151.4	65.9	8.2	60	84.5	68.3	8.3	11	15.5	54.6	7.8
31084	42	88.1	2.4	7.1	172.0	51.3	9.9	39	92.9	89.7	10.0	3	7.1	66.7	9.0
31301	325	77.5	7.7	14.5	111.8	41.0	8.1	268	82.5	80.2	8.4	57	17.5	64.9	6.7
31305	295	79.3	6.8	13.6	92.3	62.1	9.3	261	88.5	80.1	9.4	34	11.5	73.5	8.7
31306	27	66.7	22.2	11.1	118.7	65.0	8.6	21	77.8	71.4	9.2	6	22.2	50.0	6.2
31309	110	75.5	6.4	16.4	57.9	31.7	9.4	91	82.7	80.2	10.0	19	17.3	52.6	6.4
31311	96	69.8	8.3	20.8	42.9	30.4	8.6	79	82.3	67.1	8.3	17	17.7	82.4	10.3
31312	144	78.5	11.1	10.4	112.8	48.5	9.4	126	87.5	80.2	9.6	18	12.5	66.7	7.8
31313	67	70.2	3.0	26.9	53.0	99.3	7.2	53	79.1	67.9	7.2	14	20.9	78.6	6.9
31314	87	80.5	6.9	11.5	116.7	48.3	9.9	71	81.6	83.1	10.4	16	18.4	68.8	8.1
31316	155	65.8	9.7	23.2	70.9	43.2	7.2	124	80.0	70.2	7.8	31	20.0	48.4	5.0
31353	65	84.6	6.2	9.2	90.3	26.2	10.3	56	86.2	83.9	10.3	9	13.9	88.9	10.6
31358	124	72.6	4.0	21.8	127.0	79.1	9.4	101	81.5	79.2	10.3	23	18.6	43.5	5.4
31359	57	66.7	17.5	15.8	61.2	46.2	8.6	46	80.7	63.0	8.2	11	19.3	81.8	10.5
31387	107	79.4	8.4	10.3	86.8	37.2	8.8	95	88.8	80.0	8.9	12	11.2	75.0	8.3
31419	41	63.4	17.1	19.5	138.0	62.9	6.8	36	87.8	63.9	6.9	5	12.2	60.0	6.2
31620	61	96.7	1.6	1.6	118.0	24.0	12.8	60	98.4	96.7	12.8	1	1.6	100.0	12.0
31984	79	74.7	6.3	19.0	49.4	48.1	7.3	63	79.8	82.5	8.1	16	20.3	43.8	4.6
41638	257	70.8	9.7	18.3	119.8	83.6	7.9	203	79.0	80.3	9.0	54	21.0	35.2	3.9
41680	151	82.1	2.0	15.9	54.7	51.8	10.5	133	88.1	84.2	10.8	18	11.9	66.7	8.3
32001	58	55.2	6.9	36.2	127.0	49.8	6.1	40	69.0	55.0	6.2	18	31.0	55.6	5.9
32003	16	56.3	18.8	25.0	307.0	76.8	6.9	13	81.3	61.5	8.2	3	18.8	33.3	1.0
32010	63	61.9	9.5	28.6	106.8	42.7	7.7	46	73.0	63.0	7.5	17	27.0	58.8	8.2
33310	137	87.6	5.1	6.6	80.0	58.7	10.4	127	92.7	89.0	10.6	10	7.3	70.0	8.3
Skupaj	4999	75.7	7.5	16.2	96.4	51.5	8.9	4183	83.7	78.7	9.3	816	16.3	60.2	6.9

Tabela 1.4: Distribucija pregonitev na kmetijah

Rejec	MLADICE					STARE SVINJE				
	Št. preg.	DPP (dni)	do 25. dne (%)	25-40 dni (%)	po 40. dnevu (%)	Št. preg.	DPP (dni)	do 25. dne (%)	25-40 dni (%)	po 40. dnevu (%)
30023	5	30.6	80.0	0.0	20.0	10	76.3	20.0	10.0	70.0
30037	6	19.7	100.0	0.0	0.0	26	35.7	65.4	15.4	19.2
30077	22	34.9	50.0	18.2	31.8	63	46.8	34.9	20.6	44.4
30152	10	38.8	70.0	0.0	30.0	39	47.2	23.1	20.5	56.4
30504	6	51.2	16.7	50.0	33.3	20	46.6	30.0	25.0	45.0
30511	0					8	102.3	0.0	12.5	87.5
30745	4	35.3	50.0	25.0	25.0	19	35.8	52.6	21.1	26.3
40002	25	29.1	52.0	36.0	12.0	14	32.3	57.1	21.4	21.4
40005	0					13	33.1	76.9	7.7	15.4
40017	6	72.0	0.0	0.0	100.0	32	50.3	31.3	18.8	50.0
40164	31	37.7	45.2	12.9	41.9	3	98.0	0.0	33.3	66.7
40222	34	31.0	50.0	20.6	29.4	21	28.8	57.1	33.3	9.5
40267	28	28.1	46.4	46.4	7.1	16	34.5	31.3	50.0	18.8
40504	2	24.0	50.0	50.0	0.0	15	106.0	6.7	6.7	86.7
40545	3	49.0	0.0	33.3	66.7	7	33.3	57.1	28.6	14.3
40620	3	24.3	66.7	33.3	0.0	19	41.2	63.2	15.8	21.1
40649	0					5	31.6	40.0	20.0	40.0
40825	2	20.5	100.0	0.0	0.0	17	33.1	64.7	5.9	29.4
40895	3	39.7	0.0	33.3	66.7	6	52.0	0.0	66.7	33.3
31007	2	29.5	50.0	50.0	0.0	9	58.0	22.2	11.1	66.7
31025	7	30.9	57.1	14.3	28.6	6	44.8	50.0	16.7	33.3
31026	3	27.7	66.7	0.0	33.3	15	44.7	33.3	6.7	60.0
31060	8	56.6	12.5	12.5	75.0	15	65.9	20.0	0.0	80.0
31084	8	35.1	50.0	25.0	25.0	3	51.3	66.7	0.0	33.3
31301	4	117.3	0.0	25.0	75.0	47	41.0	38.3	23.4	38.3
31305	13	50.0	38.5	7.7	53.9	40	62.1	27.5	22.5	50.0
31306	10	62.6	70.0	0.0	30.0	3	65.0	33.3	33.3	33.3
31309	9	26.0	77.8	11.1	11.1	18	31.7	66.7	5.6	27.8
31311	9	80.7	11.1	11.1	77.8	20	30.4	70.0	10.0	20.0
31312	4	56.5	25.0	50.0	25.0	15	48.5	20.0	26.7	53.3
31313	7	38.4	85.7	0.0	14.3	18	99.3	38.9	0.0	61.1
31314	4	151.0	0.0	0.0	100.0	10	48.3	40.0	10.0	50.0
31316	36	37.2	36.1	19.4	44.4	36	43.2	47.2	22.2	30.6
31353	2	22.0	100.0	0.0	0.0	6	26.2	50.0	50.0	0.0
31358	3	78.3	0.0	0.0	100.0	27	79.1	7.4	11.1	81.5
31359	0					9	46.2	22.2	11.1	66.7
31387	5	33.0	20.0	40.0	40.0	11	37.2	72.7	0.0	27.3
31419	2	38.0	50.0	0.0	50.0	8	62.9	12.5	25.0	62.5
31620	0					1	24.0	100.0	0.0	0.0
31984	0					15	48.1	46.7	6.7	46.7
41638	25	84.7	0.0	0.0	100.0	47	83.6	4.3	0.0	95.7
41680	6	41.8	16.7	0.0	83.3	24	51.8	4.2	0.0	95.8
32001	0					21	49.8	47.6	0.0	52.4
32003	0					4	76.8	50.0	0.0	50.0
32010	19	35.2	36.8	26.3	36.8	18	42.7	16.7	27.8	55.6
33310	5	32.2	40.0	40.0	20.0	9	58.7	44.4	0.0	55.6
Skupaj	381	43.1	41.7	18.9	39.4	808	51.5	35.8	16.0	48.3

1.3 Analiza reprodukcijskega ciklusa

Tabela 1.5: Starost mladic ob pravitvi in število krmnih dni na živorojenega pujska pri mladicah na kmetijah

Rejec	Št. pras.	Starost ob		do 360 dni (%)	361-420 dni (%)	≥421 dni (%)	Izl. (%)	pred prip. (%)	po prip. (%)	Starost ob izl.	kDOP (dni)	KD/ $P_{\bar{z}}$
		1.prip.	pras.									
30023	15	257.8	382.0	46.7	33.3	20.0	11.8	50.0	50.0	490.0	220.7	24.0
30037	17	217.0	342.5	82.4	17.6	0.0	4.6	100.0		282.0	142.6	15.1
30077	21	257.9	398.2	14.3	57.1	28.6	12.5	33.3	66.7	420.0	229.6	19.6
30152	23	221.2	341.9	82.7	13.0	4.3	20.7		100.0	375.3	187.7	19.3
30504	53	186.4	307.5	98.1	1.9	0.0	10.2	33.3	66.7	271.2	115.6	10.3
30511	10	181.9	306.6	100.0	0.0	0.0					106.6	9.7
30745	11	273.2	389.7	9.1	72.7	18.2	8.3		100.0	449.0	212.4	16.8
40002	11	224.3	343.3	90.9	9.1	0.0	14.9	58.3	41.7	256.4	130.2	12.0
40005	19	186.6	303.6	100.0	0.0	0.0	5.0		100.0	323.0	110.1	10.2
40017	29	219.1	343.0	65.6	31.0	3.4	17.1	50.0	50.0	377.0	179.6	16.1
40164	10	215.2	345.8	80.0	10.0	10.0	26.1	74.3	25.7	315.3	189.6	19.4
40222	14	199.0	324.4	85.7	14.3	0.0	20.9	50.0	50.0	266.1	149.7	15.4
40267	25	200.6	327.4	92.0	8.0	0.0	8.9	40.0	60.0	237.4	121.9	11.3
40504	0											
40545	14	303.6	430.9	0.0	50.0	50.0					230.9	22.5
40620	23	215.4	336.6	91.3	8.7	0.0	4.2		100.0	509.0	150.0	14.3
40649	6	211.3	341.7	83.3	0.0	16.7					141.7	10.5
40825	20	256.5	372.3	45.0	40.0	15.0	22.9	75.0	25.0	287.5	193.5	15.5
40895	16	199.3	317.7	100.0	0.0	0.0	15.8	33.3	66.7	281.7	133.0	9.5
31007	26	239.1	355.0	53.8	46.2	0.0	12.7	42.9	57.1	332.3	170.2	14.8
31025	12	225.5	359.5	50.0	41.7	8.3	14.3		100.0	342.0	183.2	16.9
31026	26	244.6	363.4	50.0	46.2	3.8	16.1	40.0	60.0	418.6	205.4	18.0
31060	21	210.1	330.6	90.4	4.8	4.8	32.0	50.0	50.0	314.6	178.0	15.6
31084	8	268.0	388.6	25.0	75.0	0.0	20.0		100.0	538.0	273.1	28.8
31301	38	255.0	378.8	42.1	44.7	13.2	26.9	71.4	28.6	407.9	255.4	22.4
31305	59	205.8	334.7	79.6	15.3	5.1	6.4	25.0	75.0	342.3	144.3	13.0
31306	9	246.1	422.4	11.1	55.6	33.3	40.0	27.3	72.7	371.2	298.2	27.1
31309	21	219.5	339.1	85.7	14.3	0.0	20.6	95.3	4.7	213.4	145.0	13.2
31311	19	220.0	369.8	57.9	26.3	15.8	9.5		100.0	396.5	190.5	15.9
31312	30	224.8	347.6	70.0	23.3	6.7	55.2	67.6	32.4	347.2	329.2	29.6
31313	2	247.0	441.0	0.0	50.0	50.0	33.3		100.0	318.0	300.0	23.1
31314	10	242.9	419.5	50.0	10.0	40.0	28.6	50.0	50.0	351.8	280.2	21.2
31316	34	226.7	345.8	76.5	20.6	2.9	16.7	35.3	64.7	293.2	154.5	16.5
31353	18	213.5	332.4	94.4	5.6	0.0	5.3	100.0		255.0	135.4	12.7
31358	15	230.2	346.5	73.3	26.7	0.0					146.5	12.3
31359	6	230.0	345.5	66.7	33.3	0.0	25.0	100.0		245.0	160.5	11.9
31387	34	247.7	368.7	38.3	58.8	2.9	46.9	86.7	13.3	266.6	227.5	26.0
31419	1	253.0	392.0		100.0						192.0	32.0
31620	10	217.4	332.7	90.0	10.0	0.0					132.7	11.0
31984	11	215.0	338.9	81.8	18.2	0.0					138.9	13.2
41638	19	265.5	411.0	15.8	31.6	52.6	25.9		100.0	482.0	314.9	27.7
41680	122	234.2	351.1	69.6	27.9	2.5	3.2		100.0	370.3	156.7	14.0
32001	3	206.3	322.0	100.0	0.0	0.0	25.0		100.0	456.0	207.3	14.5
32003	4	231.5	347.8	50.0	50.0	0.0	25.0	100.0		522.0	247.4	23.0
32010	7	242.1	382.0	28.6	71.4	0.0	15.4	87.5	12.5	318.6	183.1	17.6
33310	27	233.8	358.5	51.9	44.4	3.7	24.4	70.0	30.0	288.3	183.8	16.3
Skupaj	929	227.1	351.4	66.6	26.4	7.0	18.2	57.0	43.0	309.6	166.7	15.1

Tabela 1.6: Doba med prasiatvama in število krmnih dni na pujska na kmetijah

Rejec	Št. pras.	DMP (dni)	do 160 dni (%)	161-200 dni (%)	≥201 dni (%)	Izl. (%)	DI (dni)	kDMP (dni)	G_L	$P_{\bar{z}}/$ leto	KD/ $P_{\bar{z}}$
30023	55	161.8	63.6	32.7	3.6	22.4	192.4	221.2	1.65	18.2	20.0
30037	58	171.7	22.4	72.4	5.2	20.6	149.0	210.2	1.74	19.9	18.4
30077	160	167.7	67.5	23.8	8.8	16.1	122.0	191.4	1.91	23.4	15.6
30152	188	157.7	81.4	10.6	8.0	9.6	134.4	172.0	2.12	19.7	18.5
30504	168	156.0	85.7	10.7	3.6	14.7	56.4	165.7	2.20	28.7	12.7
30511	37	195.2	48.6	24.3	27.0	14.3	119.9	217.9	1.67	21.0	17.3
30745	69	161.6	76.8	15.9	7.2	15.3	98.9	180.3	2.02	21.8	16.7
40002	67	164.9	49.3	44.8	6.0	18.3	95.4	186.3	1.96	21.9	16.7
40005	101	158.6	72.3	25.7	2.0	13.7	97.3	174.1	2.10	25.9	14.1
40017	104	167.9	64.4	24.0	11.5	23.4	105.5	200.4	1.82	22.0	16.6
40164	56	159.5	76.8	19.6	3.6	16.4	126.1	184.2	1.98	23.3	15.6
40222	86	152.6	83.7	14.0	2.3	15.7	93.5	170.0	2.15	27.4	13.4
40267	49	159.9	67.3	28.6	4.1	29.0	67.6	187.5	1.95	20.7	17.7
40504	16	194.9	18.8	50.0	31.3	40.6	229.5	381.3	0.96	9.4	38.9
40545	54	176.9	29.6	55.6	14.8	11.1	167.3	198.6	1.84	23.6	15.5
40620	136	160.2	79.4	16.2	4.4	15.5	83.4	175.5	2.08	23.2	15.8
40649	50	155.8	86.0	14.0	0.0	12.3	38.3	161.1	2.27	29.2	12.6
40825	47	172.7	55.3	31.9	12.8	29.9	83.8	208.3	1.75	21.9	16.7
40895	69	150.7	95.7	0.0	4.3	18.8	82.9	169.9	2.15	29.0	12.6
31007	65	157.3	86.2	10.8	3.1	30.5	56.3	183.4	1.99	21.9	16.7
31025	49	165.9	57.1	38.8	4.1	14.0	82.0	179.3	2.04	25.7	14.3
31026	91	163.0	63.7	34.1	2.2	18.0	88.5	182.4	2.00	26.7	13.7
31060	46	163.6	76.1	15.2	8.7	23.8	135.1	218.7	1.67	20.9	17.5
31084	36	169.8	77.8	11.1	11.1	17.8	146.6	206.0	1.77	19.8	18.4
31301	246	163.0	72.4	18.7	8.9	16.6	104.5	184.5	1.98	20.8	17.6
31305	227	159.1	81.5	11.5	7.0	13.7	102.0	175.2	2.08	24.4	15.0
31306	17	177.6	41.2	47.1	11.8	34.6	172.8	269.1	1.36	17.1	21.4
31309	83	159.5	63.9	36.1	0.0	23.4	82.9	189.3	1.93	24.5	14.9
31311	68	163.4	69.1	23.5	7.4	17.9	67.6	180.2	2.03	25.1	14.6
31312	104	160.2	84.6	10.6	4.8	18.8	130.0	190.2	1.92	23.0	15.9
31313	41	214.8	19.5	48.8	31.7	6.1	172.0	227.4	1.61	16.6	22.1
31314	58	163.8	84.5	10.3	5.2	19.2	124.8	195.7	1.87	23.8	15.4
31316	102	163.2	75.5	15.7	8.8	18.8	117.7	193.6	1.88	20.6	17.6
31353	53	157.5	81.1	18.9	0.0	26.4	59.0	178.6	2.04	24.6	14.8
31358	92	166.0	81.5	5.4	13.0	10.7	168.2	186.1	1.96	25.4	14.4
31359	38	162.9	76.3	13.2	10.5	22.5	112.2	195.3	1.87	23.9	15.3
31387	82	172.1	9.8	85.4	4.9	25.2	89.1	204.2	1.79	19.8	18.5
31419	29	174.8	27.6	58.6	13.8	23.1	213.0	240.9	1.52	16.1	22.7
31620	60	154.6	91.7	5.0	3.3	6.3	112.8	162.2	2.25	30.0	12.2
31984	54	166.6	74.1	13.0	13.0	11.5	114.3	181.4	2.01	20.1	18.2
41638	186	159.7	89.8	0.0	10.2	13.9	189.6	190.2	1.92	21.8	16.8
41680	113	158.4	86.7	7.1	6.2	8.1	107.5	167.9	2.17	27.7	13.1
32001	33	183.2	45.5	36.4	18.2	15.0	223.7	226.5	1.61	18.0	20.3
32003	10	195.9	20.0	40.0	40.0	41.2	307.7	411.3	0.89	10.2	36.1
32010	37	166.4	67.6	18.9	13.5	24.5	130.4	208.7	1.75	21.8	16.8
33310	116	165.1	61.2	31.9	6.9	15.2	71.0	178.8	2.04	24.2	15.1
Skupaj	3706	163.3	71.2	21.3	7.5	17.3	112.1	187.6	1.95	22.9	16.0

Tabela 1.7: Velikost gnezda ob rojstvu, gospodarnost priraje pujskov in delež letne obnove črede svinj na kmetijah

Rejec	Št. pras.	Št. izl.	$P_Z/\text{gn.}$	KD/ gn.	G_L	KD/ P_Z	Št. svinj v čredi	Remont (%)	G_S
30023	70	19	10.66	221.1	1.65	20.8	42	44.8	3.68
30037	75	16	10.97	192.2	1.90	17.5	42	38.5	4.94
30077	181	34	12.18	195.8	1.86	16.1	97	35.0	5.32
30152	211	26	9.34	173.7	2.10	18.6	100	25.9	8.12
30504	221	35	12.60	153.7	2.38	12.2	93	37.6	6.31
30511	47	7	12.26	194.2	1.88	15.9	25	28.0	6.71
30745	80	14	11.06	184.7	1.98	16.7	40	34.6	5.71
40002	78	39	11.13	148.6	2.46	13.4	83	47.0	5.23
40005	120	17	12.09	163.9	2.23	13.6	54	31.5	7.06
40017	133	38	11.86	195.8	1.86	16.5	71	53.3	3.50
40164	66	46	11.48	187.7	1.94	16.3	80	57.7	3.37
40222	100	30	12.31	162.3	2.25	13.2	62	48.5	4.63
40267	74	40	10.68	134.5	2.71	12.6	94	42.6	6.37
40504	16	13	9.81	381.3	0.96	38.9	17	77.8	1.23
40545	68	7	12.29	205.3	1.78	16.7	38	18.3	9.71
40620	159	26	11.04	171.8	2.12	15.6	75	34.7	6.12
40649	56	7	12.91	159.1	2.29	12.3	24	28.7	8.00
40825	67	28	12.49	202.9	1.80	16.2	41	68.1	2.64
40895	85	19	13.55	162.9	2.24	12.0	38	50.1	4.47
31007	91	36	11.15	177.8	2.05	15.9	55	65.4	3.14
31025	61	10	12.23	180.0	2.03	14.7	30	33.2	6.10
31026	117	25	12.91	187.5	1.95	14.5	60	41.6	4.68
31060	67	39	12.15	197.3	1.85	16.2	52	74.4	2.49
31084	44	10	10.89	218.2	1.67	20.0	26	38.0	4.40
31301	284	63	10.61	194.0	1.88	18.3	151	41.7	4.51
31305	286	40	11.59	168.9	2.16	14.6	132	30.2	7.15
31306	26	31	12.04	288.3	1.27	24.0	39	78.5	1.61
31309	104	69	12.34	159.7	2.29	13.0	109	63.3	3.61
31311	87	17	12.28	182.4	2.00	14.9	43	39.1	5.12
31312	134	61	11.79	221.3	1.65	18.8	81	75.1	2.20
31313	43	4	10.42	230.7	1.58	22.2	27	14.7	10.75
31314	68	18	12.81	208.1	1.75	16.3	39	46.4	3.78
31316	136	75	10.58	165.7	2.20	15.7	162	46.3	4.76
31353	71	20	11.72	167.7	2.18	14.3	33	61.3	3.55
31358	107	11	12.79	180.5	2.02	14.1	53	20.8	9.73
31359	44	13	12.86	190.6	1.92	14.8	23	56.6	3.39
31387	116	58	10.39	211.0	1.73	20.3	67	86.5	2.00
31419	30	9	10.47	239.3	1.53	22.9	20	45.8	3.33
31620	70	4	13.14	157.9	2.31	12.0	30	13.2	17.50
31984	65	7	10.08	174.2	2.10	17.3	31	22.6	9.28
41638	205	37	11.34	201.8	1.81	17.8	113	32.6	5.54
41680	235	14	11.94	162.0	2.25	13.6	104	13.4	16.79
32001	36	7	11.44	224.9	1.62	19.7	22	31.6	5.14
32003	14	11	11.21	321.9	1.13	28.7	19	56.7	2.00
32010	44	20	12.14	194.8	1.87	16.1	43	46.3	4.05
33310	143	31	11.76	179.9	2.03	15.3	72	42.8	4.74
Skupaj	4635	1201	11.61	180.6	2.02	15.6	2757	43.6	4.64

Tabela 1.8: Dolžina laktacije in starostna struktura na kmetijah

Rejec	DOLŽINA LAKTACIJE							P R A S I T V E		
	Lakt. (dni)	do 14 dni (%)	15-19 dni (%)	20-24 dni (%)	25-29 dni (%)	30-34 dni (%)	≥35 dni (%)	prva (%)	2.-7. (%)	≥8 (%)
30023	33.5	6.6	0.0	0.0	11.8	30.3	51.3	18.3	76.3	5.4
30037	43.8	0.0	0.0	0.0	1.4	13.7	84.9	23.2	67.3	9.5
30077	31.1	3.1	0.5	4.1	29.0	45.6	17.6	11.1	71.4	17.5
30152	29.6	1.9	2.4	3.8	45.2	33.7	13.0	12.2	61.6	26.2
30504	28.9	1.5	0.5	11.7	39.6	36.5	10.2	23.0	67.2	9.8
30511	33.5	0.0	0.0	0.0	4.1	67.3	28.6	18.3	73.4	8.3
30745	29.1	1.2	2.4	14.1	37.6	34.1	10.6	12.4	67.0	20.6
40002	36.2	1.2	0.0	0.0	4.9	28.0	65.9	66.3	30.4	3.3
40005	33.1	2.6	0.9	6.0	17.1	34.2	39.3	14.6	77.4	8.0
40017	32.5	3.6	0.7	0.0	21.9	46.0	27.7	20.3	73.3	6.4
40164	34.6	4.5	1.5	3.0	4.5	35.8	50.7	66.7	29.3	4.0
40222	29.0	3.9	1.0	8.8	67.6	4.9	13.7	39.6	56.8	3.6
40267	30.5	11.6	1.4	13.0	33.3	23.2	17.4	76.6	21.4	2.0
40504	40.3	3.1	0.0	3.1	3.1	12.5	78.1	0.0	78.1	21.9
40545	34.8	3.2	0.0	3.2	0.0	31.7	61.9	19.2	69.3	11.5
40620	31.4	3.1	0.0	5.0	20.5	42.9	28.6	13.0	73.5	13.5
40649	29.3	0.0	0.0	7.0	47.4	43.9	1.8	9.5	66.7	23.8
40825	37.1	4.5	0.0	0.0	0.0	22.4	73.1	34.3	62.8	2.9
40895	26.1	2.4	1.2	20.0	72.9	1.2	2.4	18.3	65.4	16.3
31007	30.0	6.3	1.1	2.1	32.6	46.3	11.6	36.7	61.3	2.0
31025	38.6	3.5	0.0	0.0	3.5	17.5	75.4	19.7	76.1	4.2
31026	33.5	0.9	0.0	0.9	13.5	45.0	39.6	21.8	66.2	12.0
31060	33.7	7.9	1.6	0.0	12.7	44.4	33.3	54.3	42.1	3.6
31084	29.9	2.2	0.0	0.0	6.7	86.7	4.4	18.2	43.6	38.2
31301	29.0	7.4	2.0	9.8	32.8	38.2	9.8	14.9	59.0	26.1
31305	27.0	0.0	0.0	12.5	72.2	12.9	2.3	19.3	57.7	23.0
31306	37.4	3.8	0.0	15.4	0.0	15.4	65.4	67.9	30.9	1.2
31309	35.3	0.9	0.0	0.0	9.0	44.1	45.9	65.3	31.3	3.4
31311	32.0	4.8	0.0	3.6	20.2	42.9	28.6	20.0	63.8	16.2
31312	31.5	4.7	0.0	1.6	23.4	57.8	12.5	34.4	55.3	10.3
31313	43.7	2.0	0.0	0.0	0.0	8.2	89.8	5.8	80.7	13.5
31314	34.7	1.4	0.0	1.4	6.8	42.5	47.9	16.1	65.5	18.4
31316	29.4	2.3	0.8	2.3	33.6	55.5	5.5	70.5	25.8	3.7
31353	30.0	1.4	0.0	6.9	27.8	44.4	19.4	20.9	63.7	15.4
31358	26.7	1.9	0.0	10.7	78.6	7.8	1.0	12.7	67.8	19.5
31359	32.1	0.0	0.0	2.0	16.3	51.0	30.6	14.0	52.7	33.3
31387	43.9	0.9	0.0	0.9	0.9	3.6	93.7	36.6	57.7	5.7
31419	32.9	0.0	5.1	7.7	10.3	33.3	43.6	2.5	97.5	0.0
31620	30.9	0.0	0.0	0.0	1.6	96.9	1.6	13.5	77.0	9.5
31984	31.1	3.3	1.6	1.6	21.3	50.8	21.3	15.3	62.5	22.2
41638	26.6	0.0	0.0	7.4	89.8	2.8	0.0	11.1	63.0	25.9
41680	30.6	0.8	0.0	0.8	35.8	51.2	11.4	50.6	49.4	0.0
32001	31.1	0.0	0.0	0.0	17.5	75.0	7.5	9.1	84.1	6.8
32003	30.2	0.0	5.9	0.0	23.5	64.7	5.9	48.5	51.5	0.0
32010	28.6	2.0	2.0	8.2	53.1	34.7	0.0	51.5	47.5	1.0
33310	33.2	2.2	0.0	0.0	2.9	66.7	28.3	22.9	61.5	15.6
Skupaj	31.4	2.7	0.6	5.1	30.9	35.6	25.1	33.5	55.1	11.4

Tabela 1.9: Interim obdobje na kmetijah

Rejec	PRVESNICE				STARE SVINJE			
	IO (dni)	do 12 dni (%)	12-40 dni (%)	≥41 dni (%)	IO (dni)	do 12 dni (%)	12-40 dni (%)	≥41 dni (%)
30023	12.8	76.2	9.5	14.3	12.0	89.5	3.5	7.0
30037	20.3	66.7	16.7	16.7	10.3	86.8	8.8	4.4
30077	7.0	95.2	2.4	2.4	7.1	91.8	6.0	2.2
30152	8.2	90.5	4.8	4.8	6.8	92.7	5.9	1.4
30504	6.4	95.6	4.4	0.0	6.1	96.2	3.8	0.0
30511	65.2	41.7	8.3	50.0	12.1	77.4	12.9	9.7
30745	18.5	66.7	6.7	26.7	6.9	92.6	4.9	2.5
40002	8.5	77.8	16.7	5.6	9.3	83.6	13.7	2.7
40005	6.3	95.2	4.8	0.0	5.9	93.9	6.1	0.0
40017	8.5	93.5	2.2	4.3	8.3	92.6	5.0	2.5
40164	8.0	88.9	11.1	0.0	5.9	92.3	7.7	0.0
40222	4.6	100.0	0.0	0.0	5.8	96.0	4.0	0.0
40267	7.1	90.5	9.5	0.0	5.3	98.1	1.9	0.0
40504	8.6	100.0	0.0	0.0	29.7	44.4	36.1	19.4
40545	72.2	0.0	33.3	66.7	22.8	29.8	57.9	12.3
40620	7.7	82.4	17.6	0.0	7.1	89.3	9.8	0.8
40649	7.0	100.0	0.0	0.0	8.1	91.8	4.1	4.1
40825	11.0	87.0	8.7	4.3	10.4	75.6	20.0	4.4
40895	9.1	88.9	0.0	11.1	5.0	100.0	0.0	0.0
31007	6.7	72.0	28.0	0.0	7.9	91.5	5.1	3.4
31025	12.2	77.8	16.7	5.6	11.0	81.8	11.4	6.8
31026	11.4	72.2	22.2	5.6	8.4	88.5	8.0	3.4
31060	7.2	91.7	8.3	0.0	5.9	97.9	2.1	0.0
31084	47.3	33.3	33.3	33.3	9.0	88.9	8.3	2.8
31301	14.4	71.7	20.8	7.5	11.5	80.9	11.8	7.4
31305	8.6	87.7	7.0	5.3	8.6	87.8	9.2	2.9
31306	19.1	75.0	12.5	12.5	6.4	100.0	0.0	0.0
31309	9.2	95.5	0.0	4.5	5.8	100.0	0.0	0.0
31311	13.4	61.1	38.9	0.0	8.4	91.0	7.7	1.3
31312	5.8	97.1	2.9	0.0	8.6	96.3	1.8	1.8
31313	62.8	50.0	6.3	43.8	22.8	78.4	3.9	17.6
31314	21.2	78.6	7.1	14.3	7.2	91.8	5.5	2.7
31316	11.4	75.0	25.0	0.0	7.4	89.1	10.1	0.8
31353	11.4	76.5	17.6	5.9	7.3	93.8	6.3	0.0
31358	8.2	93.1	3.4	3.4	9.0	89.5	5.3	5.3
31359	10.0	75.0	25.0	0.0	6.8	91.8	4.1	4.1
31387	10.1	76.5	20.6	2.9	7.9	87.7	11.0	1.4
31419	49.5	10.0	60.0	30.0	23.8	54.8	38.7	6.5
31620	19.3	66.7	11.1	22.2	6.0	98.1	0.0	1.9
31984	11.9	83.3	5.6	11.1	7.6	95.1	3.3	1.6
41638	5.7	96.6	3.4	0.0	5.4	98.7	0.4	0.9
41680	5.8	100.0	0.0	0.0	5.2	100.0	0.0	0.0
32001	18.8	50.0	35.0	15.0	19.0	60.5	23.7	15.8
32003	35.4	20.0	60.0	20.0	55.0	0.0	66.7	33.3
32010	11.1	74.2	25.8	0.0	11.2	87.5	3.1	9.4
33310	16.6	66.7	20.8	12.5	11.2	73.5	24.8	1.8
Skupaj	12.4	81.6	11.9	6.4	8.8	88.5	8.3	3.2

Tabela 1.10: Poodstavitveni premor na kmetijah

Rejec	PRVESNICE					STARE SVINJE				
	Št. svinj	PP (dni)	do 12 dni (%)	13-60 dni (%)	≥61 dni (%)	Št. svinj	PP (dni)	do 12 dni (%)	13-60 dni (%)	≥61 dni (%)
30023	21	34.2	57.1	28.6	14.3	57	25.0	73.7	12.3	14.0
30037	36	55.9	41.7	22.2	36.1	68	28.6	61.8	20.6	17.6
30077	42	26.4	73.8	11.9	14.3	183	18.7	69.9	23.0	7.1
30152	21	14.0	81.0	9.5	9.5	219	17.9	76.8	13.2	10.0
30504	45	11.4	84.5	13.3	2.2	159	10.1	88.1	9.4	2.5
30511	12	83.3	33.4	8.3	58.3	31	28.5	61.3	25.8	12.9
30745	15	33.4	53.3	26.7	20.0	81	10.8	80.2	17.3	2.5
40002	18	15.1	72.2	16.7	11.1	73	14.4	69.8	24.7	5.5
40005	21	14.5	80.9	14.3	4.8	99	7.8	85.9	14.1	0.0
40017	46	28.7	67.4	15.2	17.4	121	17.6	74.4	16.5	9.1
40164	9	49.2	55.6	0.0	44.4	52	7.0	90.4	9.6	0.0
40222	22	13.3	77.3	18.2	4.5	101	14.1	79.2	15.8	5.0
40267	21	17.5	61.9	38.1	0.0	52	12.5	80.8	15.4	3.8
40504	5	18.6	80.0	0.0	20.0	36	74.6	25.0	38.9	36.1
40545	9	83.0	0.0	55.6	44.4	57	29.9	24.6	59.6	15.8
40620	34	14.1	70.6	26.5	2.9	122	13.1	80.3	16.4	3.3
40649	7	13.0	85.7	14.3	0.0	49	10.7	85.7	14.3	0.0
40825	23	16.0	69.6	26.1	4.3	45	24.4	57.8	28.9	13.3
40895	18	28.7	66.7	11.1	22.2	65	8.4	95.4	1.5	3.1
31007	25	25.0	56.0	28.0	16.0	59	13.5	86.4	5.1	8.5
31025	18	25.3	77.7	5.6	16.7	44	16.6	77.3	13.6	9.1
31026	36	23.7	58.3	30.6	11.1	87	12.8	79.4	17.2	3.4
31060	24	20.6	75.0	12.5	12.5	47	14.7	85.1	8.5	6.4
31084	6	47.3	33.4	33.3	33.3	36	13.9	80.5	16.7	2.8
31301	53	39.7	56.6	24.5	18.9	272	21.5	70.2	18.4	11.4
31305	57	15.0	79.0	14.0	7.0	238	18.3	78.1	13.9	8.0
31306	16	56.3	56.2	12.5	31.3	11	9.6	90.9	9.1	0.0
31309	22	18.2	81.9	4.5	13.6	88	11.4	81.9	17.0	1.1
31311	18	17.8	50.0	50.0	0.0	78	13.6	78.2	19.2	2.6
31312	35	21.7	77.2	11.4	11.4	109	14.6	86.3	7.3	6.4
31313	16	70.5	37.4	18.8	43.8	51	34.5	62.8	19.6	17.6
31314	14	49.6	35.7	21.4	42.9	73	15.4	82.2	13.7	4.1
31316	36	26.0	55.5	30.6	13.9	119	17.2	72.3	21.8	5.9
31353	17	17.5	58.8	41.2	0.0	48	12.0	83.3	12.5	4.2
31358	29	36.0	69.0	17.2	13.8	95	28.2	77.9	7.4	14.7
31359	8	12.9	75.0	25.0	0.0	49	15.9	73.5	16.3	10.2
31387	34	12.8	67.6	32.4	0.0	73	12.5	79.5	16.4	4.1
31419	10	52.0	10.0	70.0	20.0	31	35.4	45.2	41.9	12.9
31620	9	19.3	66.7	22.2	11.1	52	6.5	96.2	3.8	0.0
31984	18	34.9	55.6	22.2	22.2	61	17.4	80.4	9.8	9.8
41638	29	25.2	75.9	0.0	24.1	228	31.6	79.4	0.4	20.2
41680	125	14.6	85.6	7.2	7.2	26	5.2	100.0	0.0	0.0
32001	20	52.0	25.0	40.0	35.0	38	26.3	55.2	31.6	13.2
32003	10	39.9	20.0	60.0	20.0	6	66.8	0.0	33.3	66.7
32010	31	38.4	48.4	22.6	29.0	32	16.7	75.0	21.9	3.1
33310	24	27.2	58.4	33.3	8.3	113	14.6	68.2	27.4	4.4
Skupaj	1165	26.9	65.4	20.1	14.5	3834	18.2	76.0	15.9	8.1

1.4 Analiza izločitev

Tabela 1.11: Izločitve svinj na kmetijah

Rejec	MLADICE							STARE SVINJE					
	Št. izl.	DOI (dni)	Izločitve		Vzrok izločitve			Št. izl.	DI (dni)	Izločitve		Vzrok izločitve	
			pred	po pr.	8	9	10			pred	po pr.	9	10
30023	2	288.0	0.0	100.0		50.0	50.0	21	199.4	38.1	61.9	23.8	19.0
30037	5	74.0	100.0	0.0	80.0			22	152.7	59.1	40.9	13.6	22.7
30077	7	142.3	42.9	57.1	42.9	57.1		26	125.4	57.7	42.3	3.8	26.9
30152	6	153.7	0.0	100.0		66.7	33.3	29	115.9	44.8	55.2	17.2	10.3
30504	5	71.4	40.0	60.0	20.0		20.0	28	61.2	71.4	28.6	10.7	3.6
30511	0							6	126.3	100.0	0.0		
30745	1	249.0	0.0	100.0			100.0	12	97.4	41.7	58.3	16.7	8.3
40002	28	62.7	53.6	46.4	39.3	32.1	7.1	23	90.0	39.1	60.9	39.1	13.0
40005	1	123.0	0.0	100.0				11	106.4	45.5	54.5	36.4	
40017	5	211.4	40.0	60.0	20.0	20.0	60.0	31	112.5	32.3	67.7	35.5	12.9
40164	42	97.5	61.9	38.1	47.6	23.8	14.3	11	101.8	63.6	36.4	9.1	9.1
40222	8	89.6	12.5	87.5		12.5	75.0	15	80.2	40.0	60.0	13.3	33.3
40267	9	40.9	33.3	66.7	33.3	44.4	22.2	11	89.9	45.5	54.5	18.2	18.2
40504	0							8	192.5	50.0	50.0	50.0	
40545	0							8	154.8	75.0	25.0	25.0	
40620	0							30	80.7	66.7	33.3	20.0	3.3
40649	0							7	38.9	100.0	0.0		
40825	5	93.2	80.0	20.0	80.0	20.0		19	80.9	78.9	21.1	15.8	5.3
40895	3	81.7	33.3	66.7			66.7	17	86.5	70.6	29.4	17.6	5.9
31007	32	81.2	56.3	43.8	50.0	40.6		34	65.9	67.6	32.4	17.6	8.8
31025	1	135.0	0.0	100.0			100.0	5	160.4	20.0	80.0	40.0	20.0
31026	5	218.6	40.0	60.0	20.0	60.0		24	98.3	50.0	50.0	41.7	4.2
31060	26	115.5	30.8	69.2	23.1	61.5	7.7	15	152.4	46.7	53.3	46.7	
31084	2	338.0	0.0	100.0		50.0	50.0	10	128.9	80.0	20.0	10.0	
31301	18	275.3	50.0	50.0	16.7	16.7	11.1	48	114.8	52.1	47.9	2.1	2.1
31305	2	198.5	50.0	50.0	50.0	50.0		44	100.2	54.5	45.5	11.4	4.5
31306	21	175.2	38.1	61.9	28.6	52.4	9.5	10	160.6	50.0	50.0	30.0	10.0
31309	49	20.4	93.9	6.1	10.2	4.1		20	89.3	60.0	40.0	5.0	20.0
31311	3	196.5	0.0	100.0		66.7	33.3	19	85.0	47.4	52.6	26.3	5.3
31312	37	147.1	70.3	29.7	62.2	29.7		23	141.4	30.4	69.6	43.5	4.3
31313	1		0.0	100.0		100.0		5	207.4	40.0	60.0		
31314	3	125.7	66.7	33.3	33.3			18	126.8	61.1	38.9	11.1	11.1
31316	57	89.1	38.6	61.4	28.1	42.1	14.0	30	112.0	26.7	73.3	10.0	23.3
31353	3	76.0	33.3	66.7	33.3	33.3		20	49.1	80.0	20.0	5.0	5.0
31358	1		0.0	100.0			100.0	15	155.4	40.0	60.0	13.3	20.0
31359	1	119.0	100.0	0.0	100.0			14	105.6	28.6	71.4	71.4	
31387	44	46.0	90.9	9.1	13.6	9.1		29	89.3	65.5	34.5	13.8	3.4
31419	0							8	226.0	25.0	75.0	62.5	
31620	0							12	76.2	91.7	8.3	8.3	
31984	0							7	102.1	57.1	42.9	14.3	14.3
41638	8	294.0	0.0	100.0		62.5	37.5	31	205.0	19.4	80.6	45.2	16.1
41680	3	142.0	0.0	100.0				15	40.5	80.0	20.0		
32001	2	359.0	0.0	100.0			50.0	5	195.6	40.0	60.0	20.0	20.0
32003	5	275.4	80.0	20.0	40.0			6	286.0	50.0	50.0	16.7	33.3
32010	14	200.4	50.0	50.0	21.4	28.6	7.1	13	142.2	38.5	61.5	23.1	15.4
33310	4	56.5	75.0	25.0				17	76.5	70.6	29.4	11.8	5.9
Skupaj	469	110.3	55.4	44.6	29.4	29.2	10.4	832	112.7	53.1	46.9	20.1	9.6

Poglavje 2

Kmetije skupaj po letih

2.1 Velikost gnezda

Tabela 2.1: Velikost gnezda po letih na kmetijah

Leto	MLADICE			STARE SVINJE						SKUPAJ		
	Št. pras.	DOP (dni)	$P_{\bar{z}}$ /gn.	Št. pras.	DMP (dni)	Lakt. (dni)	IO (dni)	PP (dni)	$P_{\bar{z}}$ /gn.	Št. pras.	P_O /gn.	Izgube (%)
1984	87	188.8	9.21	535	162.0	30.7	12.9	17.5	10.08	622	8.55	14.1
1985	66	152.2	8.98	595	160.8	30.5	11.0	14.9	10.12	661	8.52	14.9
1986	176	175.1	9.00	653	162.4	29.5	14.9	18.3	9.83	829	8.42	12.8
1987	146	174.1	8.44	682	164.1	30.4	15.5	19.2	9.97	828	8.14	16.0
1988	184	152.8	8.77	555	162.6	32.1	11.4	16.0	10.30	739	8.34	15.9
1989	182	164.7	8.66	630	164.2	31.9	14.2	17.3	10.33	812	8.69	12.7
1990	167	166.7	9.05	792	169.2	34.7	15.4	18.9	10.15	959	8.69	12.8
1991	170	167.2	8.89	739	169.2	35.5	15.1	18.8	10.23	909	8.67	13.1
1992	157	175.2	8.83	768	170.4	36.0	14.8	18.7	10.11	925	8.72	11.8
1993	254	178.5	8.88	685	173.6	36.7	16.4	21.8	10.26	939	8.87	10.3
1994	349	168.9	9.01	1023	171.7	35.5	15.0	21.0	10.39	1372	8.91	11.2
1995	608	167.5	8.84	2038	169.4	35.5	14.2	18.6	10.56	2646	8.99	11.6
1996	588	163.7	9.01	1801	169.2	35.1	12.7	18.9	10.51	2389	9.03	10.9
1997	545	164.3	9.01	2220	170.6	34.7	14.1	20.7	10.41	2765	9.11	10.1
1998	932	156.0	9.20	2650	168.6	34.6	12.0	18.9	10.49	3582	9.06	10.7
1999	779	169.9	9.11	2913	169.3	33.8	12.5	20.3	10.41	3692	9.11	10.1
2000	747	161.7	9.12	2994	168.4	32.7	12.3	20.3	10.46	3741	9.24	9.4
2001	891	165.1	8.88	2895	166.9	31.7	12.0	19.9	10.28	3786	8.92	10.4
2002	920	165.5	9.08	3191	166.3	31.4	11.8	19.6	10.40	4111	9.05	10.5
2003	1010	170.5	9.21	3570	168.2	31.5	12.6	21.4	10.33	4580	8.98	10.9
2004	1065	173.0	9.05	3946	171.8	32.7	13.3	24.0	10.22	5011	8.76	12.2
2005	1060	184.8	9.16	4090	171.8	33.1	13.2	23.4	10.45	5150	8.95	12.1
2006	1054	175.9	9.23	4126	169.9	32.9	12.7	21.8	10.42	5180	8.95	12.1
2007	1054	172.5	9.31	4189	169.5	32.6	12.4	21.4	10.50	5243	9.01	12.2
2008	943	174.5	9.62	4126	170.3	32.7	12.1	22.1	10.56	5069	9.10	12.4
2009	956	170.8	9.29	4187	169.4	32.8	11.7	20.9	10.51	5143	9.01	12.4
2010	960	174.4	9.48	3674	169.1	32.1	11.4	21.4	10.61	4634	9.10	12.4
2011	1074	174.0	9.83	3786	170.1	32.3	11.8	21.8	10.75	4860	9.28	12.0
2012	1002	169.1	10.20	4040	165.8	31.0	10.6	19.3	11.26	5042	9.66	12.6
2013	1117	165.4	10.37	4127	164.8	31.1	9.5	18.1	11.19	5244	9.61	12.7
2014	1056	164.1	10.59	4210	165.3	31.4	9.7	18.3	11.25	5266	9.78	12.1
2015	789	168.6	10.23	4000	166.8	31.7	9.8	18.9	11.17	4789	9.58	13.0
2016	951	169.2	10.76	3853	164.6	31.1	9.7	18.0	11.55	4804	9.79	14.1
2017	889	170.2	10.88	3684	165.8	31.3	9.6	18.9	11.41	4573	9.71	14.2
2018	874	166.2	10.79	3881	166.8	31.3	9.3	19.8	11.50	4755	9.76	14.2
2019	850	161.4	10.59	3507	165.5	31.3	9.6	18.5	11.35	4357	9.67	13.6
2020	987	152.6	10.99	3778	163.7	31.4	8.9	16.4	11.77	4765	10.09	13.1

2.2 Analiza pripustov

Tabela 2.2: Analiza pripustov mladic po letih kmetijah

Leto	S K U P A J							PRVI PRIPUST				DRUGI IN VIŠJI			
	Št. prip.	Usp. prip. (%)	Izl. po prip. (%)	Preg. (%)	DPI (dni)	DPP (dni)	$P_{\bar{z}}$ / prip.	Št. prip.	Prvi (%)	Usp. (%)	$P_{\bar{z}}$ / prip.	Št. prip.	≥ 2 (%)	Usp. (%)	$P_{\bar{z}}$ / prip.
1984	100	87.0		12.0		60.3	8.0	90	90.0	90.0	8.3	10	10.0	60.0	5.3
1985	74	86.5	2.7	9.5	77.0	79.1	7.7	67	90.5	86.6	7.7	7	9.5	85.7	8.0
1986	204	87.3	3.4	9.3	92.1	39.0	7.9	176	86.3	86.4	7.8	28	13.7	92.9	8.6
1987	167	88.6	5.4	5.4	72.6	52.4	7.4	158	94.6	88.6	7.4	9	5.4	88.9	7.2
1988	217	84.3	4.2	10.6	68.4	41.1	7.4	192	88.5	87.5	7.7	25	11.5	60.0	5.1
1989	219	84.9	3.2	11.9	96.7	55.9	7.3	186	84.9	86.6	7.5	33	15.1	75.8	6.7
1990	192	85.9	2.1	11.5	83.0	34.9	7.8	171	89.1	88.9	8.0	21	10.9	61.9	6.1
1991	194	89.2	2.1	8.8	62.0	38.7	7.9	176	90.7	90.3	7.9	18	9.3	77.8	7.8
1992	170	91.2	0.6	8.2	100.0	27.9	8.1	151	88.8	92.1	8.1	19	11.2	84.2	8.0
1993	281	91.1	2.1	6.4	203.8	61.8	8.1	264	93.9	93.2	8.3	17	6.1	58.8	5.8
1994	741	90.3	1.5	6.9	123.3	44.9	8.1	691	93.3	91.2	8.2	50	6.7	109.8	7.1
1995	2067	88.7	2.9	8.1	79.1	38.0	7.7	1916	92.7	89.4	7.6	151	7.3	80.8	7.8
1996	3384	79.5	6.3	14.0	57.2	34.4	6.8	2916	86.2	80.6	6.8	468	13.8	72.4	6.7
1997	3810	80.6	6.6	12.7	56.6	30.9	7.3	3322	87.2	82.0	7.4	488	12.8	71.5	6.7
1998	4605	80.4	7.3	12.1	73.7	35.9	7.4	4072	88.4	81.4	7.4	533	11.6	73.0	7.2
1999	3143	77.5	10.6	11.5	78.7	38.1	7.1	2757	87.7	79.3	7.3	386	12.3	65.5	5.9
2000	3003	72.1	10.8	16.9	68.3	37.6	6.5	2479	82.6	75.2	6.7	524	17.4	57.3	5.6
2001	3094	72.9	10.5	16.4	72.9	39.1	6.5	2584	83.5	74.2	6.4	510	16.5	66.1	6.4
2002	2904	67.2	10.7	16.8	72.4	42.4	6.1	2419	83.3	68.4	6.1	485	16.7	61.4	6.0
2003	3208	68.8	10.9	18.7	88.5	40.9	6.4	2601	81.1	71.3	6.5	607	18.9	58.2	5.7
2004	3009	70.0	9.1	19.9	77.6	42.6	6.3	2410	80.1	72.4	6.4	599	19.9	60.4	5.7
2005	3033	71.6	9.2	18.7	91.4	39.9	6.6	2446	80.6	73.8	6.8	587	19.4	62.5	5.8
2006	3163	76.6	8.4	14.4	83.0	42.5	7.1	2709	85.6	78.9	7.3	454	14.4	63.2	6.0
2007	2804	75.8	8.3	15.3	79.7	47.3	7.1	2361	84.2	77.7	7.1	443	15.8	65.7	6.4
2008	2613	76.6	7.9	15.2	75.3	44.0	7.4	2189	83.8	78.7	7.6	424	16.2	66.3	6.5
2009	2615	75.3	8.4	15.7	83.5	46.3	7.0	2185	83.6	78.8	7.3	430	16.4	57.4	5.3
2010	2629	70.7	9.9	18.3	79.3	46.6	6.7	2181	83.0	74.2	6.9	448	17.0	53.3	5.4
2011	2278	72.4	9.7	16.9	81.2	46.0	7.2	1860	81.7	74.9	7.3	418	18.3	61.5	6.4
2012	2333	70.3	10.7	18.3	77.2	40.5	7.2	1901	81.5	72.8	7.4	432	18.5	59.3	6.3
2013	2605	72.7	10.8	16.1	72.6	43.5	7.6	2183	83.8	75.0	7.8	422	16.2	60.4	6.6
2014	2447	75.4	8.9	15.2	78.2	38.5	8.0	2045	83.6	77.6	8.2	402	16.4	63.9	6.9
2015	2190	70.7	10.1	18.9	88.3	42.8	7.2	1817	83.0	72.2	7.3	373	17.0	63.3	6.7
2016	2188	71.8	9.6	18.4	91.2	44.6	7.8	1755	80.2	74.5	8.0	433	19.8	60.7	6.8
2017	2161	70.9	10.3	18.2	80.4	44.5	7.8	1771	82.0	72.6	7.9	390	18.1	63.6	7.1
2018	2182	71.2	8.9	19.3	89.9	43.5	7.8	1767	81.0	73.7	7.9	415	19.0	60.5	7.1
2019	2101	72.2	9.1	18.4	85.5	45.2	7.6	1710	81.4	73.9	7.7	391	18.6	64.7	7.0
2020	2176	73.0	9.1	17.5	87.5	43.1	8.0	1784	82.0	75.9	8.3	392	18.0	60.0	6.8

Tabela 2.3: Analiza pripustov starih svinj po letih na kmetijah

Leto	S K U P A J							PRVI PRIPUST				DRUGI IN VIŠJI			
	Št. prip.	Usp. prip. (%)	Izl. po prip. (%)	Preg. (%)	DPI (dni)	DPP (dni)	$P_{\bar{z}}$ / prip.	Št. prip.	Prvi (%)	Usp. (%)	$P_{\bar{z}}$ / prip.	Št. prip.	≥ 2 (%)	Usp. (%)	$P_{\bar{z}}$ / prip.
1984	632	85.1	3.3	11.1	77.2	38.1	8.6	556	88.0	87.2	8.9	76	12.0	75.0	7.3
1985	679	87.3	3.1	8.5	55.0	36.5	8.8	602	88.7	89.9	9.1	77	11.3	68.8	7.0
1986	723	90.0	2.2	7.5	60.8	35.3	8.8	639	88.4	90.0	8.8	84	11.6	90.5	9.1
1987	806	86.2	4.2	8.9	78.7	33.5	8.6	718	89.1	88.0	8.8	88	10.9	71.6	7.3
1988	678	80.5	5.7	12.8	54.8	32.4	8.3	585	86.3	83.3	8.6	93	13.7	63.4	6.5
1989	755	83.4	5.7	10.2	66.2	32.0	8.7	672	89.0	86.5	9.0	83	11.0	59.0	6.0
1990	914	85.9	3.5	9.9	66.4	33.5	8.7	819	89.6	89.0	9.0	95	10.4	59.0	5.9
1991	861	86.1	4.5	8.8	73.5	38.4	8.8	773	89.8	88.4	9.1	88	10.2	65.9	6.6
1992	941	83.0	4.9	11.3	73.5	39.4	8.4	832	88.4	85.7	8.7	109	11.6	62.4	6.0
1993	861	79.4	6.3	14.2	81.4	42.3	8.2	737	85.6	81.9	8.4	124	14.4	64.5	6.4
1994	1379	80.9	4.6	13.9	80.7	43.3	8.5	1169	84.8	84.3	8.9	210	15.2	61.9	6.4
1995	1812	81.6	6.0	12.0	84.4	46.2	8.6	1602	88.4	83.3	8.7	210	11.6	68.8	7.2
1996	2310	77.8	7.1	14.4	89.4	43.1	8.2	1976	85.5	80.3	8.4	334	14.5	62.9	6.7
1997	2892	77.5	6.5	15.6	91.0	43.8	8.1	2457	85.0	79.5	8.3	435	15.0	66.0	7.0
1998	3538	74.8	7.3	17.2	93.1	44.8	7.9	2949	83.4	78.3	8.2	589	16.6	57.9	6.1
1999	4095	71.1	10.1	17.7	98.9	44.9	7.4	3339	81.5	74.8	7.8	756	18.5	55.2	5.7
2000	4131	72.4	7.5	19.2	87.8	42.8	7.6	3301	79.9	75.5	7.9	830	20.1	60.1	6.3
2001	4089	70.3	9.5	19.7	84.4	44.0	7.2	3308	80.9	73.2	7.6	781	19.1	58.0	5.8
2002	4357	73.3	8.4	17.8	89.3	43.0	7.6	3553	81.5	76.3	8.0	804	18.5	60.1	6.2
2003	5178	69.0	9.1	21.0	109.1	47.6	7.1	4138	79.9	72.8	7.5	1040	20.1	53.5	5.5
2004	5820	67.3	9.3	22.3	104.5	48.9	6.9	4509	77.5	71.5	7.3	1311	22.5	52.7	5.4
2005	5729	71.3	8.1	19.9	94.8	49.6	7.5	4547	79.4	75.3	7.9	1182	20.6	56.3	5.9
2006	5641	73.0	8.4	17.7	106.5	48.7	7.6	4579	81.2	75.9	7.9	1062	18.8	60.5	6.3
2007	5765	72.4	8.0	18.6	109.4	52.4	7.6	4705	81.6	76.2	8.0	1060	18.4	55.7	5.8
2008	5851	70.3	9.1	19.6	100.7	57.8	7.4	4704	80.4	74.5	7.9	1147	19.6	53.0	5.6
2009	5723	73.3	7.6	18.1	107.0	58.8	7.7	4670	81.6	77.6	8.2	1053	18.4	54.3	5.6
2010	5173	71.1	8.6	19.0	99.7	54.1	7.5	4162	80.5	75.3	8.0	1011	19.5	54.1	5.8
2011	5396	69.9	10.1	19.1	98.6	52.5	7.5	4305	79.8	73.8	7.9	1091	20.2	55.0	5.9
2012	5372	75.0	7.2	17.2	92.0	52.2	8.4	4444	82.7	78.3	8.8	928	17.3	59.3	6.7
2013	5617	73.4	8.8	17.2	98.2	51.7	8.2	4652	82.8	76.2	8.5	965	17.2	59.6	6.7
2014	5724	73.5	8.6	17.0	97.2	48.7	8.3	4759	83.1	75.7	8.5	965	16.9	62.9	7.0
2015	5523	72.1	8.8	18.5	112.7	53.9	8.1	4480	81.1	75.4	8.4	1043	18.9	58.1	6.5
2016	5330	72.5	7.8	19.2	101.5	48.0	8.4	4304	80.8	76.7	8.9	1026	19.3	54.7	6.2
2017	5234	70.8	7.7	20.5	110.0	51.1	8.1	4192	80.1	74.8	8.6	1042	19.9	54.8	6.2
2018	5383	72.0	8.2	18.8	100.5	54.1	8.3	4322	80.3	75.9	8.8	1061	19.7	56.2	6.3
2019	4780	72.5	8.1	18.7	103.3	48.4	8.2	3863	80.8	76.1	8.7	917	19.2	57.1	6.5
2020	4999	75.7	7.5	16.2	96.4	51.5	8.9	4183	83.7	78.7	9.3	816	16.3	60.2	6.9

Tabela 2.4: Distribucija pregonitev po letih na kmetijah

Leto	MLADICE					STARE SVINJE				
	Št. preg.	DPP (dni)	do 25. dne (%)	25-40 dni (%)	po 40. dnevu (%)	Št. preg.	DPP (dni)	do 25. dne (%)	25-40 dni (%)	po 40. dnevu (%)
1984	12	60.3	41.7	8.3	50.0	40	38.1	50.7	18.3	31.0
1985	7	79.1	28.6	0.0	71.4	58	36.5	58.6	12.1	29.3
1986	7	39.0	52.6	5.3	42.1	52	35.3	61.1	11.1	27.8
1987	9	52.4	22.2	22.2	55.6	72	33.5	58.3	15.3	26.4
1988	23	41.1	39.1	21.7	39.1	87	32.4	56.3	26.4	17.2
1989	26	55.9	30.8	7.7	61.5	77	32.0	59.7	16.9	23.4
1990	22	34.9	45.5	27.3	27.3	90	33.5	56.0	17.6	26.4
1991	17	38.7	29.4	23.5	47.1	76	38.4	56.6	14.5	29.0
1992	14	27.9	71.4	7.1	21.4	106	39.4	50.9	11.3	37.7
1993	18	61.8	16.7	22.2	61.1	122	42.3	48.4	15.6	36.1
1994	51	44.9	49.0	15.7	35.3	192	43.3	42.2	17.7	40.1
1995	167	38.0	44.3	24.0	31.8	217	46.2	37.3	19.8	42.9
1996	473	34.4	51.6	23.3	25.2	333	43.1	46.8	13.8	39.3
1997	482	30.9	55.2	22.8	22.0	451	43.8	48.3	12.2	39.5
1998	556	35.9	52.7	21.9	25.3	607	44.8	48.8	12.5	38.7
1999	362	38.1	51.7	18.2	30.1	725	44.9	44.8	14.6	40.5
2000	508	37.6	50.2	21.3	28.5	793	42.8	44.4	15.4	40.3
2001	506	39.1	50.4	20.6	29.0	804	44.0	47.1	16.0	36.8
2002	498	42.4	48.5	18.0	33.5	774	43.0	45.7	17.6	36.7
2003	601	40.9	46.3	21.6	32.1	1089	47.6	41.3	16.3	42.3
2004	599	42.6	47.7	16.0	36.2	1300	48.9	40.8	13.2	46.0
2005	566	39.9	47.9	19.6	32.5	1138	49.6	39.2	14.7	46.1
2006	457	42.5	48.1	16.8	35.0	1001	48.7	39.8	15.9	44.4
2007	429	47.3	41.7	18.6	39.6	1075	52.4	35.2	15.8	49.1
2008	397	44.0	46.9	18.9	34.2	1147	57.8	33.1	14.2	52.7
2009	411	46.3	49.1	15.6	35.3	1036	58.8	31.9	14.4	53.7
2010	480	46.6	45.1	13.3	41.6	985	54.1	35.6	16.2	48.2
2011	384	46.0	37.7	20.1	42.2	1033	52.5	34.1	18.2	47.7
2012	427	40.5	51.3	14.5	34.2	923	52.2	37.4	14.2	48.4
2013	418	43.5	47.1	18.2	34.7	964	51.7	35.4	15.2	49.5
2014	373	38.5	47.2	22.3	30.6	970	48.7	38.1	15.3	46.6
2015	413	42.8	40.0	22.3	37.8	1021	53.9	34.6	15.3	50.2
2016	402	44.6	44.3	15.9	39.8	1023	48.0	38.2	16.8	45.0
2017	394	44.5	40.9	18.8	40.4	1073	51.1	37.7	14.9	47.3
2018	420	43.5	45.0	17.9	37.1	1010	54.1	35.8	15.3	48.9
2019	387	45.2	40.6	20.7	38.8	896	48.4	37.4	15.2	47.4
2020	381	43.1	41.7	18.9	39.4	808	51.5	35.8	16.0	48.3

2.3 Analiza reprodukcijskega ciklusa

Tabela 2.5: Starost mladic ob pravitvi in število krmnih dni na živorojenega pujska pri mladicah na kmetijah

Leto	Št. pras.	Starost ob 1.prip. pras.	Starost ob pras.	do 360 dni (%)	361-420 dni (%)	≥421 dni (%)	Izl. (%)	pred prip. (%)	po prip. (%)	Starost ob izl.	kDOP (dni)	KD/ $P_{\bar{z}}$
1984	87	272.6	388.8	64.4	26.4	9.2					188.8	20.5
1985	65	237.2	352.2	93.8	6.2		3.0			318.0	155.8	17.6
1986	175	255.9	374.0	74.3	17.7	8.0	3.8			339.6	179.6	19.7
1987	149	255.9	373.4	67.1	22.8	10.1	6.9			331.1	183.1	22.0
1988	184	234.8	353.1	70.1	22.3	7.6	3.7			327.6	157.9	18.2
1989	185	240.7	362.9	65.4	26.5	8.1	3.6			371.3	169.4	19.6
1990	165	249.8	366.9	67.3	22.4	10.3	2.9			322.7	170.6	19.0
1991	173	246.8	365.2	54.9	34.1	11.0	1.7			337.7	167.6	18.9
1992	153	257.6	375.8	51.6	32.0	16.3					175.8	19.8
1993	257	260.0	376.9	47.9	36.2	9.3	2.6			577.7	187.2	21.1
1994	349	249.4	368.9	54.2	33.2	12.6	3.5	42.9	57.1	396.3	177.5	19.7
1995	608	245.5	367.5	54.1	33.9	12.0	6.7	49.7	50.3	340.2	163.5	18.5
1996	632	240.3	364.1	58.5	30.1	11.4	14.1	57.8	42.2	294.7	168.4	18.7
1997	545	241.8	364.3	63.3	30.8	5.9	16.1	56.2	43.8	306.3	173.0	19.2
1998	893	234.8	357.7	61.0	30.9	8.1	10.9	47.0	53.0	311.3	164.2	17.9
1999	794	242.6	365.9	53.9	34.9	11.2	19.6	57.7	42.3	311.6	184.4	20.2
2000	698	236.6	362.2	57.7	32.4	9.9	16.7	42.7	57.3	316.2	173.7	18.9
2001	899	237.6	363.0	59.6	29.4	11.0	21.2	48.2	51.8	300.7	183.2	20.8
2002	862	237.2	364.2	56.6	33.2	10.2	19.0	47.8	52.2	309.6	179.5	19.6
2003	940	241.0	366.5	22.1	42.6	35.3	19.4	47.4	52.6	323.6	185.8	20.3
2004	1023	242.6	369.8	52.5	34.2	13.3	21.1	59.2	40.8	303.6	187.5	20.6
2005	928	251.7	378.1	43.8	39.3	16.9	18.0	46.4	53.6	327.3	191.2	21.0
2006	977	248.8	374.3	44.2	40.9	14.8	17.2	56.6	43.4	322.1	185.6	19.9
2007	969	243.5	369.2	54.7	32.5	12.8	20.8	65.4	34.6	302.0	183.2	19.7
2008	874	245.8	370.4	53.5	32.8	13.6	25.0	74.4	25.6	292.4	186.6	19.5
2009	866	240.8	365.7	58.5	29.0	12.5	21.0	64.1	35.9	305.8	181.1	19.4
2010	922	249.6	376.4	49.0	35.8	15.2	23.3	59.5	40.5	303.6	191.7	20.2
2011	1042	245.2	370.8	51.0	35.8	13.2	22.1	65.3	34.7	297.9	187.4	19.0
2012	964	243.3	369.0	55.3	32.5	12.2	23.0	55.1	44.9	308.1	190.2	18.6
2013	1035	238.5	362.7	57.7	32.7	9.6	21.5	52.5	47.5	291.9	176.0	16.9
2014	981	239.1	362.6	59.6	31.4	9.0	21.4	63.0	37.0	289.2	176.0	16.6
2015	845	242.8	367.8	54.5	34.1	11.4	21.2	54.4	45.6	314.4	186.2	18.2
2016	907	243.0	369.2	55.1	32.4	12.5	17.7	49.5	50.5	312.0	184.4	17.0
2017	824	240.0	365.0	53.5	35.6	10.9	20.1	52.4	47.6	299.0	179.2	16.7
2018	818	238.2	364.3	55.3	34.6	10.1	18.0	54.3	45.7	298.1	174.4	15.9
2019	804	235.0	362.7	59.8	27.1	13.1	17.5	50.3	49.7	312.5	174.8	16.4
2020	929	227.1	351.4	66.6	26.4	7.0	18.2	57.0	43.0	309.6	166.7	15.1

Tabela 2.6: Doba med prasiatvama in število krmnih dni na pujska po letih na kmetijah

Leto	Št. pras.	DMP (dni)	do 160 dni (%)	161-200 dni (%)	≥201 dni (%)	Izl. (%)	DI (dni)	kDMP (dni)	G_L	$P_{\bar{z}}/$ leto	KD/ $P_{\bar{z}}$
1984	510	162.2	70.0	21.4	8.6	7.9	105.3	171.3	2.10	21.4	17.0
1985	607	158.8	76.3	18.5	5.3	10.3	72.9	167.2	2.20	21.9	16.6
1986	618	160.2	74.8	18.8	6.5	9.9	62.9	167.2	2.20	21.5	17.0
1987	701	160.9	71.9	21.8	6.3	14.1	82.0	174.4	2.10	20.7	17.6
1988	505	161.6	61.2	34.1	4.7	18.9	73.5	178.7	2.00	20.5	17.8
1989	637	162.9	59.7	34.1	6.3	15.3	94.3	179.9	2.00	20.9	17.5
1990	748	166.2	52.3	39.0	8.7	11.8	71.5	175.7	2.10	20.7	17.6
1991	726	166.6	52.3	39.1	8.5	13.6	84.4	179.8	2.00	20.7	17.7
1992	769	169.1	46.6	46.0	7.5	13.1	87.5	182.3	2.00	20.3	18.0
1993	684	174.4	35.1	49.7	15.2	18.6	112.9	200.1	1.80	18.7	19.5
1994	1023	171.7	46.8	41.4	11.7	16.4	104.8	192.5	1.90	19.7	18.5
1995	2038	169.4	50.4	39.8	9.8	16.1	99.0	189.4	1.90	20.4	17.9
1996	1789	170.4	50.8	38.2	11.1	18.0	103.0	194.4	1.90	19.9	18.4
1997	2220	170.6	57.8	30.5	11.7	16.1	105.6	191.7	1.90	19.8	18.4
1998	2594	168.3	54.4	36.5	9.1	18.0	109.2	193.4	1.90	19.9	18.4
1999	2890	168.4	55.7	34.4	10.0	20.6	115.4	199.8	1.80	19.0	19.2
2000	2959	168.2	58.2	31.2	10.5	16.6	106.8	190.5	1.90	20.0	18.2
2001	2796	167.1	61.5	29.0	9.4	20.8	102.5	194.9	1.90	19.3	19.0
2002	3163	166.0	63.7	27.5	8.8	18.4	103.1	190.2	1.90	20.0	18.3
2003	3605	167.6	25.4	56.2	18.4	20.3	123.4	200.4	1.82	18.8	19.4
2004	3833	170.6	59.3	28.2	12.5	19.2	128.8	202.8	1.80	18.4	19.8
2005	3998	169.9	58.4	30.1	11.5	17.4	117.5	196.0	1.86	19.4	18.8
2006	4043	168.8	59.6	29.3	11.2	17.7	121.7	196.2	1.86	19.4	18.8
2007	4184	168.9	60.8	28.1	11.1	18.9	118.1	197.8	1.85	19.4	18.8
2008	4058	169.1	61.4	27.7	10.8	19.5	119.1	199.7	1.83	19.2	19.0
2009	4133	167.5	63.9	25.8	10.3	17.1	120.4	194.0	1.88	19.9	18.4
2010	3740	168.3	66.6	22.9	10.5	19.8	113.5	197.7	1.85	19.5	18.7
2011	3722	169.3	62.0	26.7	11.4	21.2	120.0	202.7	1.80	19.3	18.9
2012	3997	165.0	68.7	22.6	8.7	18.1	104.2	188.9	1.93	21.7	16.8
2013	4133	164.3	70.7	20.0	9.4	19.9	106.4	191.8	1.90	21.4	17.1
2014	4134	164.2	68.1	23.5	8.4	19.6	103.7	190.8	1.91	21.4	17.0
2015	4047	167.1	64.8	25.6	9.6	19.0	126.9	197.6	1.85	20.7	17.7
2016	3789	164.3	68.4	23.1	8.5	17.4	118.3	190.2	1.92	22.2	16.5
2017	3724	166.0	67.7	21.6	10.7	18.3	123.9	195.2	1.87	21.3	17.1
2018	3834	165.4	69.7	20.2	10.0	19.0	118.6	194.6	1.88	21.7	16.9
2019	3527	165.2	67.6	22.4	10.0	19.0	111.0	192.2	1.90	21.5	17.0
2020	3706	163.3	71.2	21.3	7.5	17.3	112.1	187.6	1.95	22.9	16.0

Tabela 2.7: Velikost gnezda ob rojstvu, gospodarnost priraje pujskov in delež letne obnove črede svinj na kmetijah

Leto	Št. pras.	Št. izl.	$P_{\bar{z}}$ / gn.	KD/ gn.	G_L	KD/ $P_{\bar{z}}$	Št. svinj v čredi	Remont (%)	G_S
1984									
1985									
1986									
1987									
1988									
1989									
1990									
1991									
1992									
1993									
1994	1372	221	10.04	187.2	1.95	18.6	816	27.1	7.20
1995	2646	595	10.17	174.5	2.09	17.2	2290	26.0	8.05
1996	2421	849	10.17	178.7	2.04	17.6	2209	38.4	5.32
1997	2765	1008	10.14	180.9	2.02	17.8	2597	38.8	5.20
1998	3487	1042	10.18	176.1	2.07	17.3	3077	33.9	6.12
1999	3684	1420	10.13	192.4	1.90	19.0	2938	48.3	3.93
2000	3658	1054	10.20	183.3	1.99	18.0	2632	40.0	4.97
2001	3695	1370	9.92	189.6	1.93	19.1	2657	51.6	3.73
2002	4025	1221	10.14	185.9	1.96	18.3	2683	45.5	4.32
2003	4545	1511	10.10	194.6	1.90	19.3	3187	47.4	4.01
2004	4856	1548	9.98	197.2	1.85	19.8	3284	47.1	3.93
2005	4926	1338	10.19	194.3	1.88	19.1	3277	40.8	4.60
2006	5020	1411	10.20	192.1	1.90	18.8	3438	41.0	4.63
2007	5153	1613	10.29	192.6	1.90	18.7	3428	47.0	4.03
2008	4932	1728	10.35	195.2	1.87	18.9	3317	52.1	3.59
2009	4999	1429	10.36	189.7	1.92	18.3	3221	44.4	4.34
2010	4662	1564	10.36	195.7	1.87	18.9	3085	50.7	3.68
2011	4764	1578	10.54	197.4	1.85	18.7	3073	51.4	3.60
2012	4961	1430	11.04	189.3	1.93	17.2	2999	47.7	4.04
2013	5168	1601	11.08	186.6	1.96	16.9	3153	50.8	3.85
2014	5115	1571	11.10	186.0	1.96	16.8	3125	50.3	3.90
2015	4892	1477	11.00	193.9	1.88	17.6	3162	46.7	4.03
2016	4696	1201	11.41	188.4	1.94	16.5	2879	41.7	4.64
2017	4548	1290	11.28	190.1	1.92	16.8	2846	45.3	4.24
2018	4652	1314	11.44	188.1	1.94	16.5	2899	45.3	4.28
2019	4331	1213	11.21	186.4	1.96	16.6	2692	45.1	4.35
2020	4635	1201	11.61	180.6	2.02	15.6	2757	43.6	4.64

Tabela 2.8: Dolžina laktacije in starostna struktura po letih na kmetijah

Leto	DOLŽINA LAKTACIJE (dni)							P R A S I T V E		
	Lakt. (dni)	do 14 dni (%)	15-19 dni (%)	20-24 dni (%)	25-29 dni (%)	30-34 dni (%)	≥35 dni (%)	prva (%)	2.-7. (%)	≥8 (%)
1984	30.6	4.3	0.4	2.7	92.6	0.0	0.0	25.4	74.6	0.0
1985	30.4	7.0	0.1	6.5	86.4	0.0	0.0	9.3	66.3	24.4
1986	29.3	4.0	0.7	9.3	86.0	0.0	0.0	21.0	56.7	22.3
1987	30.0	4.0	1.0	8.5	86.5	0.0	0.0	16.4	68.2	15.4
1988	31.4	6.0	1.9	5.8	86.3	0.0	0.0	23.5	67.8	8.7
1989	32.1	3.6	1.1	6.0	89.3	0.0	0.0	20.3	75.2	4.5
1990	34.0	3.9	1.1	8.4	86.6	0.0	0.0	16.7	74.5	8.8
1991	35.2	4.3	0.6	7.4	87.7	0.0	0.0	17.3	71.5	11.2
1992	35.4	4.3	0.6	3.8	91.3	0.0	0.0	14.7	68.3	17.0
1993	36.5	4.6	1.2	3.8	90.4	0.0	0.0	23.9	61.7	14.4
1994	35.5	2.2	0.5	4.4	11.0	26.1	55.8	25.4	64.4	10.2
1995	35.5	1.8	0.4	1.1	11.5	29.3	55.9	23.0	68.6	8.4
1996	35.2	1.9	0.4	2.0	13.4	26.2	56.1	26.1	66.0	7.9
1997	34.7	3.0	0.6	2.7	14.6	29.8	49.2	19.7	71.8	8.5
1998	34.6	2.8	0.6	2.6	14.2	33.7	46.1	57.1	37.2	5.7
1999	33.8	3.0	0.9	4.0	16.6	34.5	41.1	46.7	45.4	7.9
2000	32.6	2.9	1.1	5.0	19.6	38.1	33.2	43.3	46.1	10.6
2001	31.8	3.4	0.8	5.6	25.3	39.5	25.5	45.4	44.7	9.9
2002	31.5	3.4	1.3	5.3	26.4	40.5	23.1	39.9	49.5	10.6
2003	31.5	3.9	0.9	5.8	29.6	36.8	22.9	39.1	51.2	9.7
2004	32.6	3.6	0.6	3.0	22.8	42.0	28.1	37.4	51.9	10.6
2005	33.1	3.2	0.6	2.7	22.7	38.7	32.2	35.0	54.7	10.4
2006	33.0	3.0	0.6	3.1	25.2	37.2	30.9	37.8	51.4	10.8
2007	32.5	3.4	0.7	3.2	26.6	38.5	27.7	35.9	51.5	12.6
2008	32.8	3.9	0.4	2.1	21.8	41.7	30.1	35.7	51.5	12.8
2009	32.8	4.0	0.4	1.9	23.6	40.6	29.5	34.3	53.1	12.6
2010	32.1	4.1	0.4	2.1	22.6	44.8	26.1	36.0	51.5	12.6
2011	32.3	3.6	0.8	3.6	20.6	41.9	29.5	34.8	53.7	11.5
2012	31.1	3.7	2.3	6.7	22.0	40.3	25.0	32.2	57.5	10.3
2013	31.1	3.2	1.6	6.6	25.9	37.9	24.8	33.4	56.9	9.7
2014	31.4	4.0	2.7	6.9	23.3	36.9	26.3	32.8	56.2	11.0
2015	31.7	2.7	1.4	8.2	23.6	36.2	27.9	32.6	55.3	12.1
2016	31.2	2.7	0.6	8.6	27.0	36.2	24.8	32.1	55.0	12.9
2017	31.2	2.6	0.7	7.2	31.8	32.0	25.8	32.1	53.9	14.0
2018	31.3	3.2	0.6	6.1	30.2	35.7	24.2	31.4	54.5	14.1
2019	31.3	3.2	0.9	5.9	30.7	33.9	25.4	32.7	54.2	13.1
2020	31.4	2.7	0.6	5.1	30.9	35.6	25.1	33.5	55.1	11.4

2.4 Interim obdobje in poodstavitveni premor

Tabela 2.9: Interim obdobje po letih na kmetijah

Leto	P R V E S N I C E				S T A R E S V I N J E			
	IO (dni)	do 12 dni (%)	12-40 dni (%)	≥41 dni (%)	IO (dni)	do 12 dni (%)	12-40 dni (%)	≥41 dni (%)
1984	25.2	50.5	29.4	20.1	10.7	81.8	14.4	3.8
1985	30.1	46.3	26.0	27.7	9.3	87.6	10.1	2.3
1986	21.9	47.0	32.7	20.3	13.1	79.8	12.9	7.3
1987	23.1	57.1	25.2	17.7	13.8	77.7	15.4	6.9
1988	17.6	70.7	19.2	10.1	10.0	83.4	13.5	3.1
1989	21.8	53.5	30.8	15.7	10.9	81.6	14.2	4.2
1990	26.9	55.3	27.7	17.0	13.3	74.8	19.2	6.0
1991	29.8	45.5	32.9	21.6	12.5	79.5	14.1	6.4
1992	28.2	33.5	30.0	36.5	12.2	77.8	17.3	4.9
1993	24.9	47.7	30.7	21.6	14.0	72.2	21.5	6.4
1994	30.2	37.6	33.3	29.1	13.0	68.6	17.5	13.9
1995	21.9	54.3	29.8	15.9	12.0	73.7	20.4	5.9
1996	20.9	51.3	32.8	15.9	10.7	79.7	15.3	5.0
1997	24.7	50.6	31.1	18.3	11.5	77.5	17.5	4.9
1998	17.9	59.1	29.1	11.7	10.8	79.8	15.0	4.1
1999	18.7	57.3	30.3	12.6	11.3	79.3	16.1	5.0
2000	20.6	58.4	26.9	14.7	10.9	80.9	14.8	4.3
2001	18.0	59.6	25.4	14.9	11.1	78.4	14.7	6.8
2002	19.3	58.5	28.4	13.1	10.2	82.2	14.3	3.5
2003	18.2	62.1	24.8	13.1	11.5	79.5	15.7	4.8
2004	22.1	58.7	22.0	19.3	12.1	80.1	12.9	7.0
2005	21.2	57.5	27.0	15.5	11.6	80.0	15.0	5.0
2006	20.5	59.4	24.5	16.1	11.6	79.6	14.9	5.5
2007	18.5	61.4	24.9	13.7	11.2	82.2	13.0	4.8
2008	18.4	67.3	19.4	13.3	11.8	81.3	12.7	6.0
2009	16.9	70.2	17.4	12.4	12.0	82.9	11.1	6.0
2010	17.9	69.1	19.4	11.5	9.9	85.8	10.8	3.4
2011	17.0	66.3	23.7	10.0	11.1	83.6	11.2	5.2
2012	15.0	75.4	15.8	8.8	10.1	85.2	11.1	3.8
2013	12.3	80.1	13.4	6.5	9.0	88.1	8.8	3.1
2014	13.7	77.1	14.9	8.0	9.0	88.5	8.3	3.2
2015	14.7	75.1	15.3	9.6	9.2	87.9	8.7	3.4
2016	14.4	78.3	13.1	8.6	9.8	85.8	10.5	3.7
2017	15.2	75.5	13.9	10.6	9.1	88.4	8.6	3.0
2018	15.4	74.4	15.5	10.1	8.6	88.8	8.3	2.9
2019	13.3	77.8	14.4	7.8	9.7	86.7	9.4	3.9
2020	12.4	81.6	11.9	6.4	8.8	88.5	8.3	3.2

Tabela 2.10: Poodstavitveni premor po letih na kmetijah

Leto	PRVESNICE					STARE SVINJE				
	Št. svinj	PP (dni)	do 12 dni (%)	13-60 dni (%)	≥61 dni (%)	Št. svinj	PP (dni)	do 12 dni (%)	13-60 dni (%)	≥61 dni (%)
1984	109	31.3	44.0	40.5	15.5	527	15.4	73.8	20.8	5.4
1985	69	37.2	42.0	40.3	17.7	610	13.8	79.7	16.0	4.3
1986	147	25.1	47.1	36.1	16.8	576	16.8	75.4	14.4	10.2
1987	142	28.7	51.5	34.5	14.0	664	18.0	70.4	23.6	6.0
1988	167	24.0	56.3	34.8	8.9	511	15.5	73.6	22.2	4.2
1989	215	28.5	46.5	30.7	22.8	540	14.3	73.7	23.5	2.8
1990	177	33.6	49.7	35.6	14.7	738	17.7	68.0	26.3	5.7
1991	143	32.1	41.3	42.0	16.7	717	17.3	72.1	21.9	6.0
1992	167	35.7	37.7	42.5	19.8	774	17.2	69.8	23.8	6.5
1993	218	30.6	42.2	44.0	13.8	643	20.5	63.1	30.0	6.8
1994	357	30.2	33.0	39.0	28.0	1022	20.5	61.1	24.8	14.1
1995	427	28.5	46.7	39.9	13.4	1385	17.8	67.2	25.8	6.9
1996	587	31.1	43.3	40.4	16.3	1723	17.9	69.1	23.6	7.3
1997	743	33.8	41.6	39.7	18.5	2149	18.4	67.9	24.5	7.4
1998	745	28.8	47.7	39.6	12.6	2793	20.0	67.7	23.2	8.1
1999	1035	29.9	45.0	40.1	15.1	3060	21.5	66.1	24.8	9.3
2000	783	33.5	43.9	38.3	17.8	3348	20.6	66.5	24.6	8.9
2001	1058	31.6	45.1	36.0	18.9	3031	20.0	65.9	24.0	10.1
2002	1028	31.4	45.3	40.6	14.1	3329	19.7	69.2	22.9	7.9
2003	1219	32.5	47.5	35.4	17.1	3959	23.0	65.4	24.1	10.5
2004	1404	40.3	43.2	33.0	23.8	4416	25.8	63.9	22.5	13.6
2005	1344	40.6	43.1	35.5	21.4	4385	24.1	65.6	23.5	10.9
2006	1176	36.4	45.3	34.6	20.1	4465	22.3	66.6	23.1	10.3
2007	1246	34.3	49.1	33.9	17.0	4519	23.8	68.3	20.7	11.0
2008	1300	38.4	50.6	27.4	22.0	4551	25.2	67.2	21.2	11.6
2009	1139	35.7	54.4	27.2	18.4	4584	26.3	69.5	18.1	12.4
2010	1120	38.8	52.3	29.5	18.2	4053	24.1	70.0	19.5	10.5
2011	1301	36.4	46.8	33.9	19.3	4095	22.9	69.4	19.8	10.8
2012	1244	31.5	58.7	24.5	16.8	4128	20.8	72.6	18.6	8.8
2013	1236	26.3	61.9	25.6	12.5	4381	19.4	74.7	16.3	9.0
2014	1328	27.6	60.9	25.0	14.1	4396	18.4	75.0	16.7	8.3
2015	1057	31.7	55.8	27.9	16.3	4466	20.7	73.0	17.3	9.7
2016	1097	27.6	63.5	23.4	13.1	4233	22.7	70.7	18.8	10.5
2017	1092	33.8	55.2	25.5	19.3	4142	20.9	73.1	16.9	10.0
2018	1100	35.6	55.5	24.4	20.1	4283	21.9	73.2	16.1	10.7
2019	1052	27.5	61.1	24.5	14.4	3728	22.0	71.4	18.1	10.5
2020	1165	26.9	65.4	20.1	14.5	3834	18.2	76.0	15.9	8.1

2.5 Analiza izločitev

Tabela 2.11: Izločitve svinj po letih na kmetijah

Leto	MLADICE							STARE SVINJE					
	Št. izl.	DOI (dni)	Izločitve		Vzrok izločitve			Št. izl.	DI (dni)	Izločitve		Vzrok izločitve	
			pred	po pr.	8	9	10			pred	po pr.	9	10
1984	0							50	95.6	66.0	34.0	14.0	14.0
1985	4	178.5						69	75.1	68.1	31.9	10.1	13.0
1986	7	138.2						83	59.5	78.3	21.7	7.2	6.0
1987	20	94.9						139	69.3	74.8	25.2	7.9	5.0
1988	6	144.0						112	77.6	70.5	29.5	1.8	5.4
1989	6	171.3						119	101.2	56.3	43.7	8.4	16.8
1990	6	139.3						102	73.7	76.5	25.5	10.8	6.9
1991	3	137.7						125	85.8	63.2	36.8	9.6	4.8
1992	0							105	92.0	59.1	40.9	14.3	6.7
1993	6	149.8						158	100.4	64.6	35.4	8.2	7.0
1994	17	168.6	52.9	47.1	17.6	29.4	5.9	127	101.1	71.7	28.3	12.6	6.3
1995	193	108.6	60.6	39.4	26.4	23.3	5.2	308	96.8	65.3	34.7	10.1	5.5
1996	495	95.2	57.4	42.6	30.7	31.9	4.4	423	105.2	58.9	41.1	13.2	8.7
1997	524	116.3	52.7	47.3	22.1	27.7	10.9	422	109.9	55.0	45.0	19.9	8.1
1998	563	108.2	51.5	48.5	17.9	30.0	9.6	638	107.8	56.1	43.9	17.7	6.4
1999	551	113.5	57.9	42.1	18.1	28.9	8.3	730	121.5	49.7	50.3	18.6	9.2
2000	510	113.9	45.1	54.9	21.4	37.8	7.6	634	110.5	49.1	50.9	15.5	10.1
2001	619	110.4	45.4	54.6	21.5	34.9	10.8	780	109.0	48.6	51.4	17.4	12.4
2002	474	108.8	48.9	51.1	21.9	33.8	8.6	769	105.5	51.6	48.4	17.9	10.0
2003	684	125.9	52.2	47.8	21.3	39.5	6.6	915	121.8	43.7	56.3	22.4	9.4
2004	577	113.2	57.4	42.6	22.4	22.9	7.8	974	138.7	45.5	54.5	17.5	10.9
2005	467	149.4	39.4	60.6	29.3	34.5	12.2	894	124.4	49.3	50.7	15.5	15.1
2006	625	123.9	62.6	37.4	42.6	22.7	7.4	924	130.6	49.1	50.9	21.8	9.5
2007	634	102.8	66.9	33.1	41.0	19.1	5.5	1008	124.3	53.5	46.5	17.4	10.6
2008	669	104.5	71.3	28.7	46.5	16.6	6.6	1001	136.3	46.7	53.3	20.0	11.5
2009	600	99.8	62.8	37.2	45.0	24.0	8.2	908	125.8	52.8	47.2	20.7	10.1
2010	585	116.7	58.1	41.9	29.6	21.7	13.2	966	129.8	51.8	48.2	22.5	11.9
2011	566	111.8	59.9	40.1	32.9	27.4	7.1	932	126.1	48.0	52.0	26.8	11.8
2012	613	104.7	54.3	45.7	30.7	27.6	11.3	959	103.8	56.6	43.4	21.5	8.8
2013	552	102.6	52.7	47.3	28.8	28.4	11.6	1095	110.4	55.4	44.6	19.6	10.1
2014	556	96.0	57.6	42.4	30.9	27.7	8.8	974	113.2	48.5	51.5	24.0	11.4
2015	454	116.9	54.0	46.0	32.4	26.9	13.2	903	134.7	46.7	53.3	24.8	14.5
2016	404	111.3	52.2	47.8	27.7	30.2	11.4	838	126.5	49.4	50.6	18.3	14.7
2017	444	108.9	47.1	52.9	27.9	32.0	14.9	845	133.2	50.1	49.9	20.1	15.5
2018	411	108.4	53.3	46.7	33.1	28.0	12.2	938	122.5	51.7	48.3	16.8	15.4
2019	396	110.1	51.0	49.0	30.3	26.3	12.4	856	122.5	53.2	46.8	18.0	12.9
2020	469	110.3	55.4	44.6	29.4	29.2	10.4	832	112.7	53.1	46.9	20.1	9.6

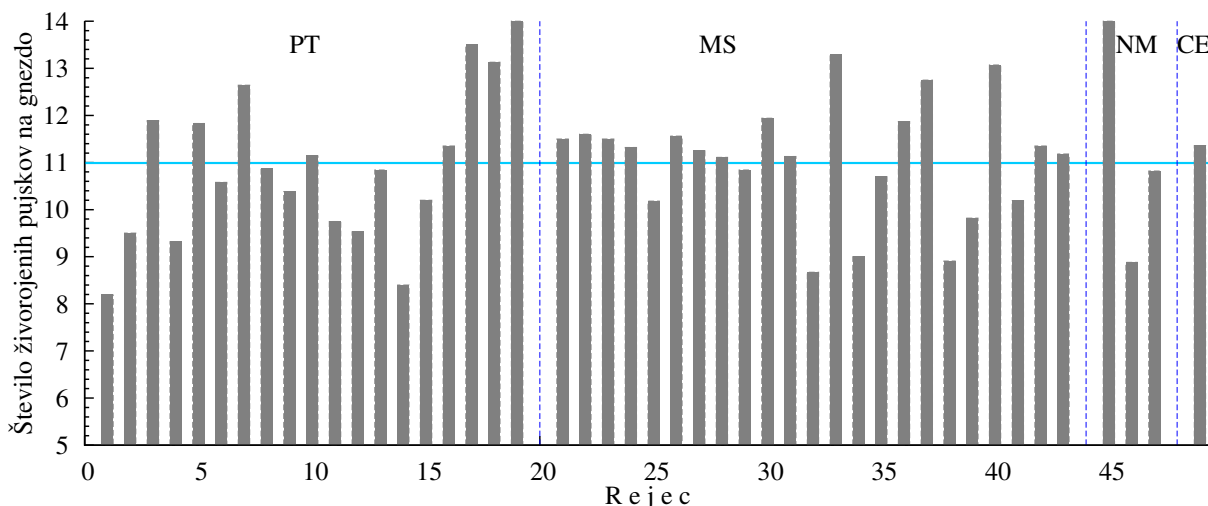
Poglavje 3

Grafični prikaz rezultatov plodnosti

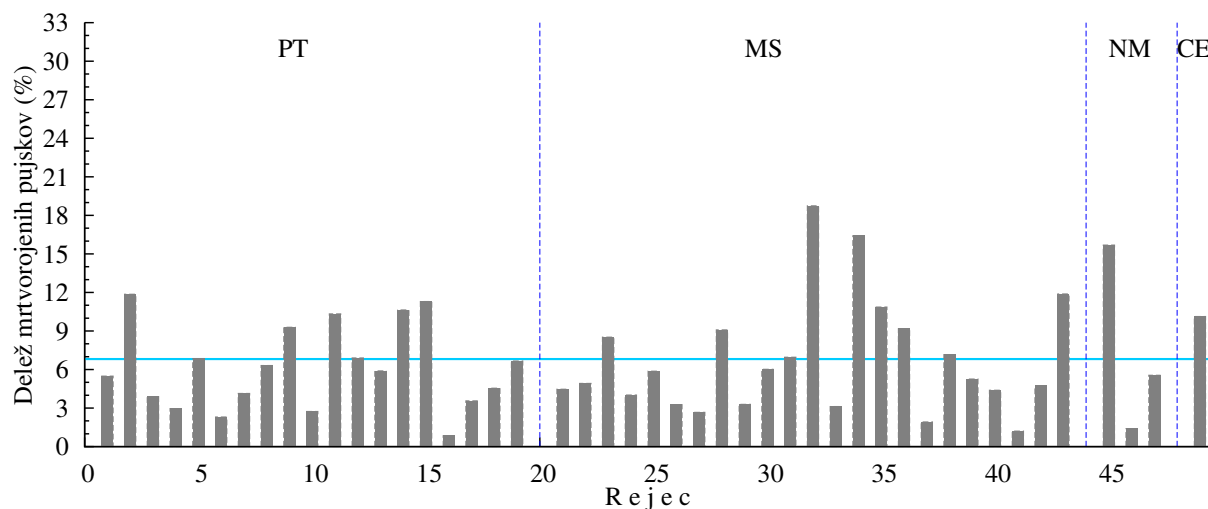
Pojasnila:

- **Rdeči stolpci in pike** prikazujejo rezultat plodnosti na kmetiji
- **Modre črte in pike** prikazujejo skupno povprečje za vse kmetije
- **Sivi stolpci** prikazujejo rezultat plodnosti kmetij v kontroli
- **Standard 1** v grafih prikazuje rezultat plodnosti večje farme v Sloveniji
- **Standard 2** v grafih prikazuje rezultat plodnosti pridobljen iz literature

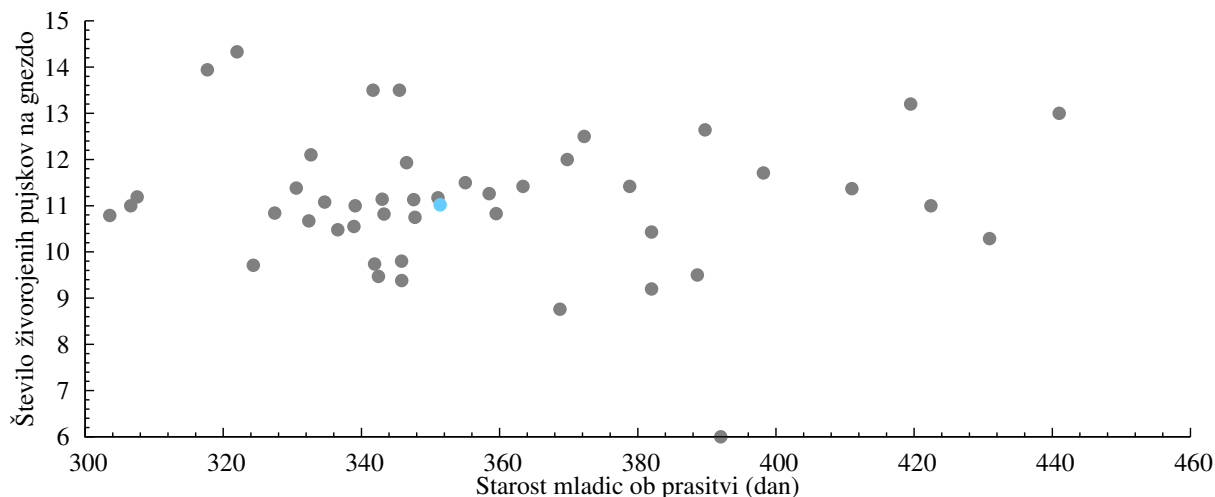
3.1 Mladice



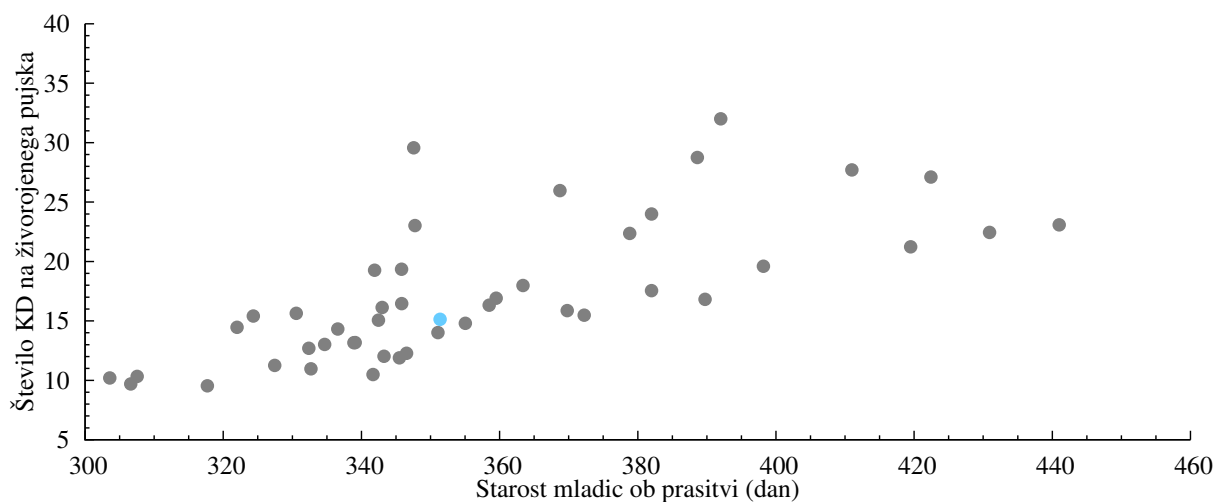
Slika 3.1: Število živorojenih pujskov pri mladicah na kmetijah po zavodih v Sloveniji v letu 2020



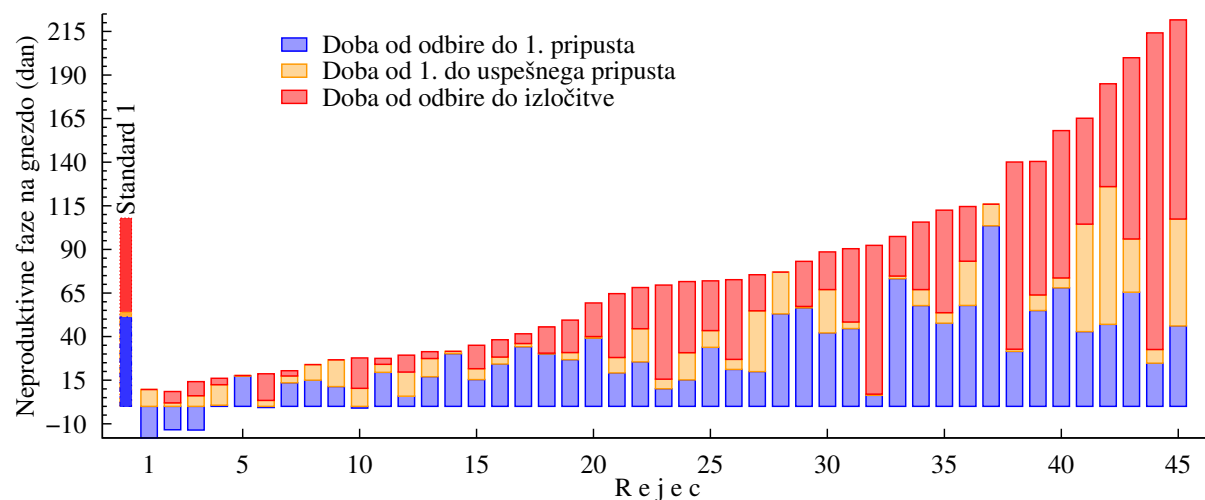
Slika 3.2: Delež mrtvorjenih pujskov pri mladicah na kmetijah po zavodih v Sloveniji v letu 2020



Slika 3.3: Število živorojenih pujskov na gnezdo in starost mladic ob praritvi na kmetijah v Sloveniji v letu 2020

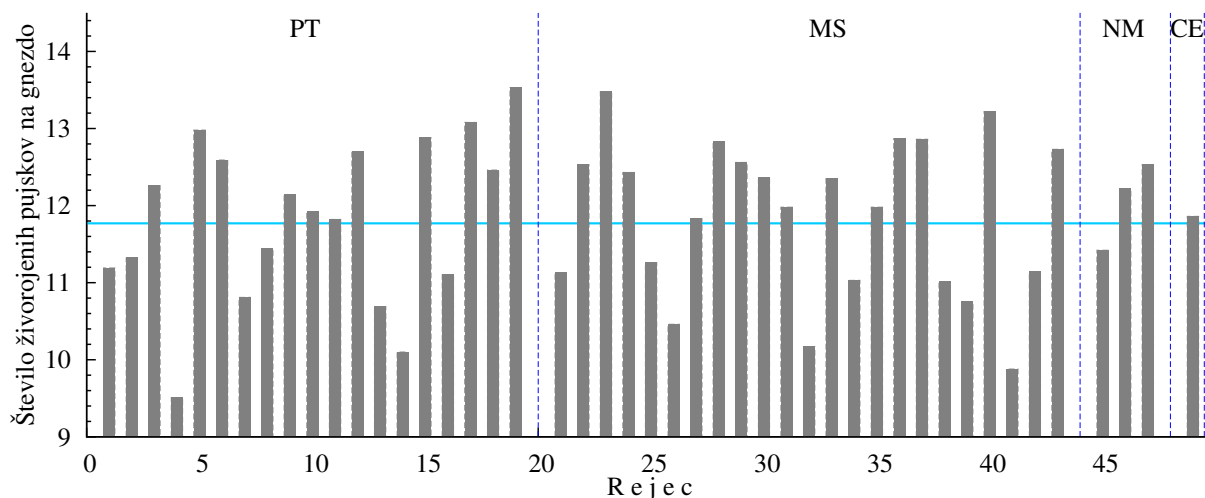


Slika 3.4: Število krmnih dni na živorojenega pujska in starost mladic ob praritvi na kmetijah v Sloveniji v letu 2020

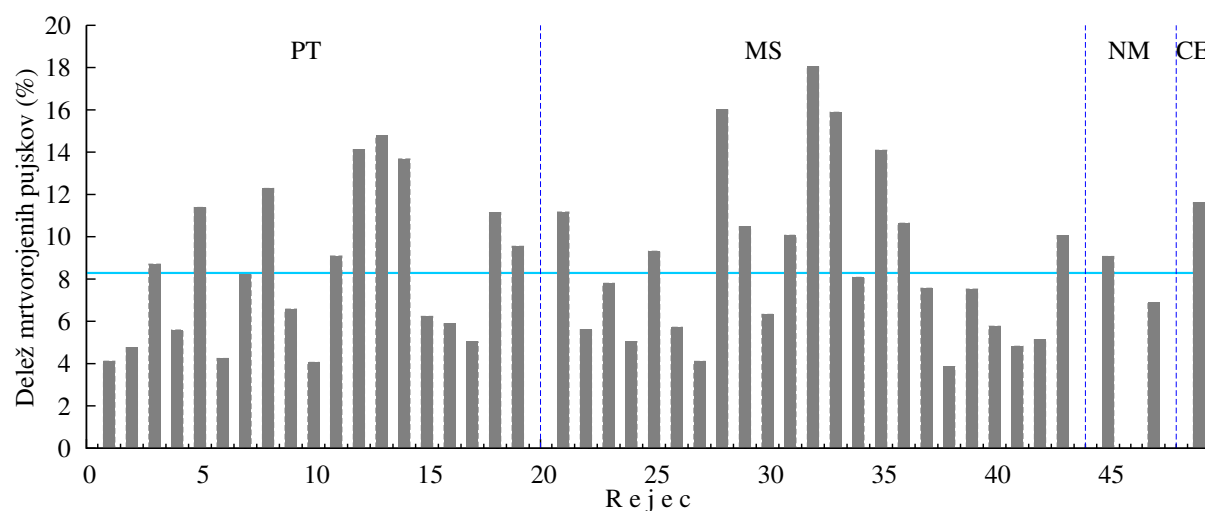


Slika 3.5: Dolžina neproduktivnih faz na gnezdo pri mladicah na kmetijah v 2020

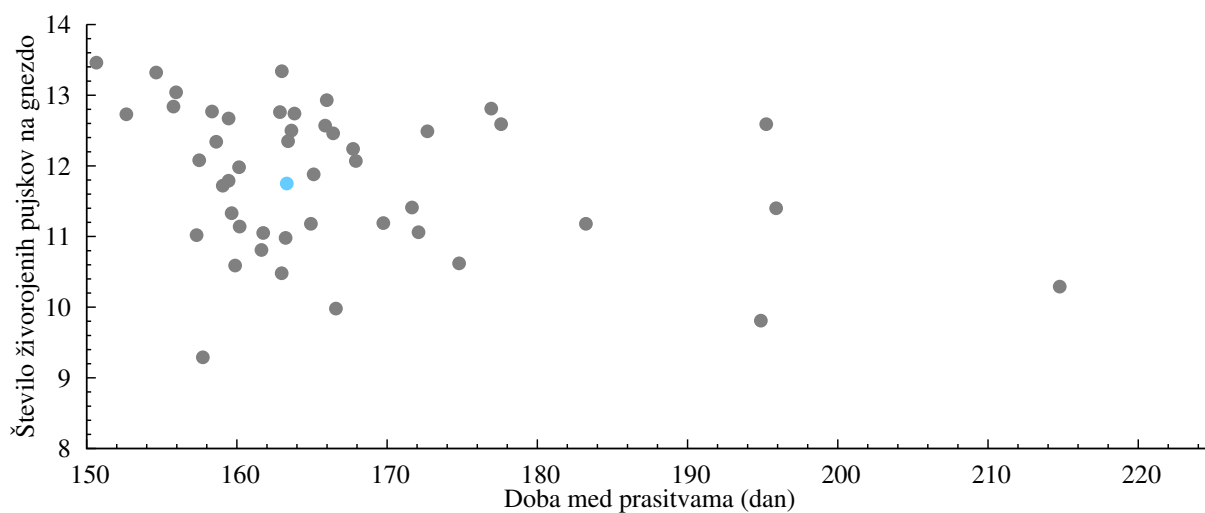
3.2 Stare svinje



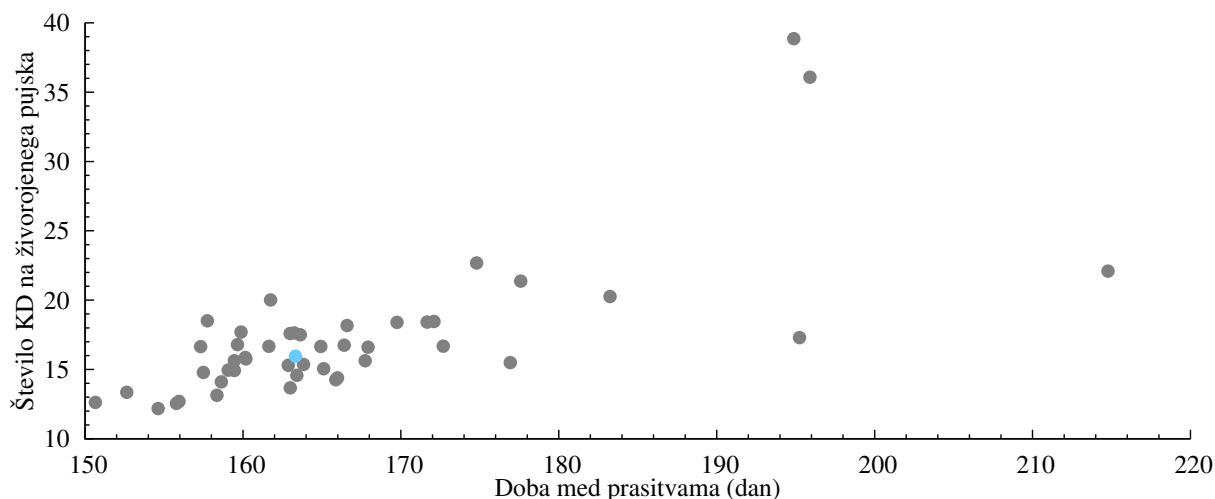
Slika 3.6: Število živorojenih pujskov pri starih svinjah na kmetijah po zavodih v Sloveniji v letu 2020



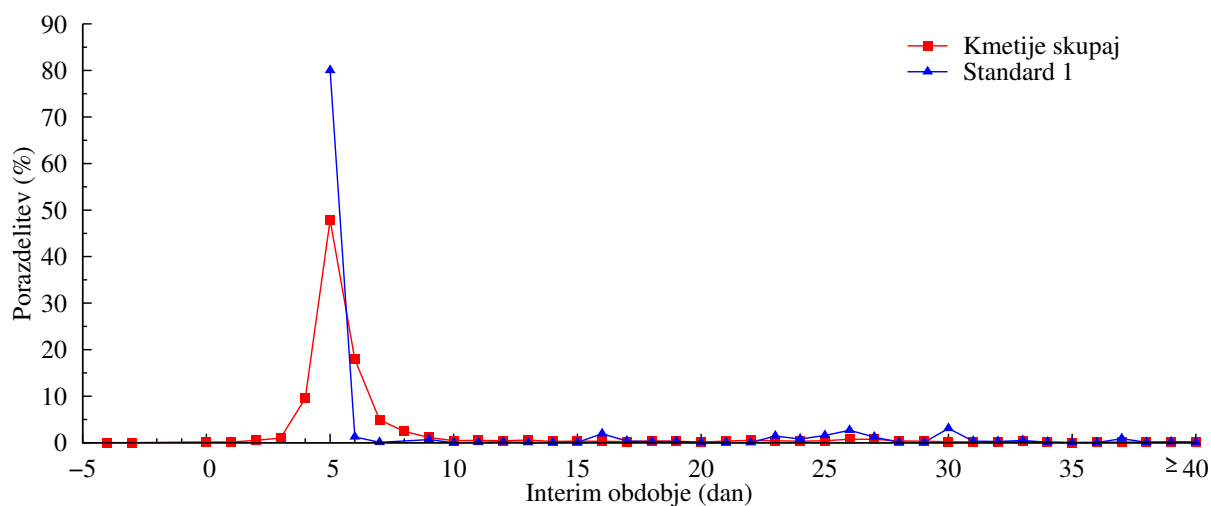
Slika 3.7: Delež mrtvorjenih pujskov pri starih svinjah na kmetijah po zavodih v Sloveniji v letu 2020



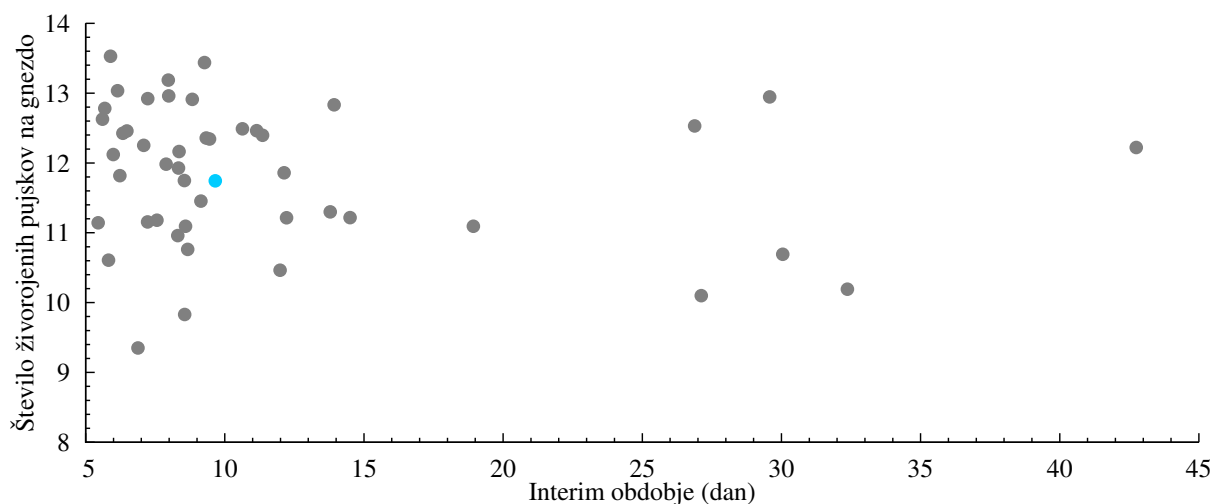
Slika 3.8: Število živorojenih pujskov na gnezdo in doba med pravitvama na kmetijah v Sloveniji v letu 2020



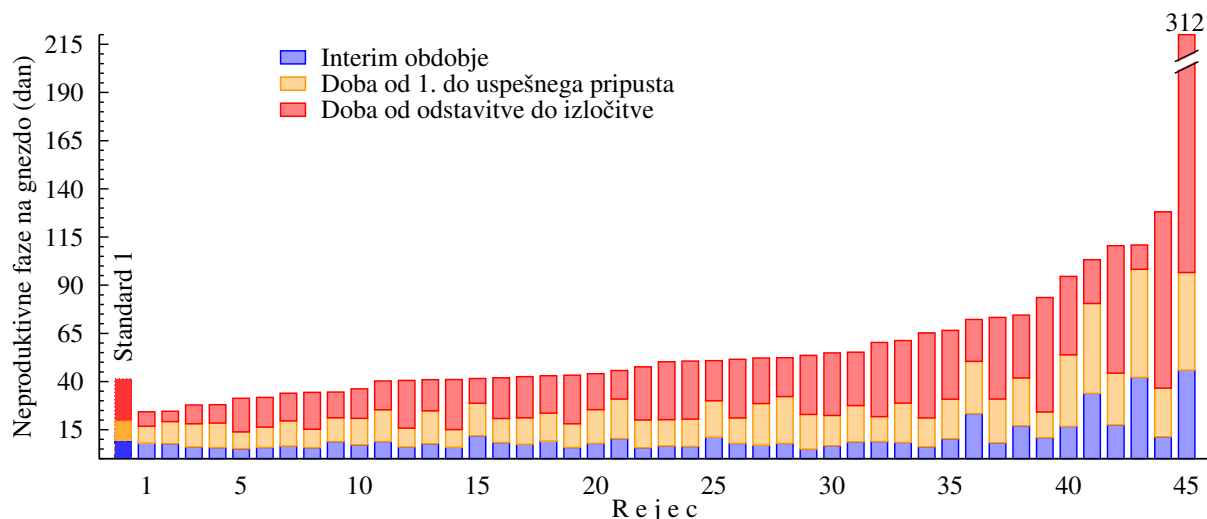
Slika 3.9: Število krmnih dni na živorojenega pujska in doba med pravitvama na kmetijah v Sloveniji v letu 2020



Slika 3.10: Porazdelitev dolžine interim obdobja na kmetijah v Sloveniji v letu 2020 v primerjavi s standardi

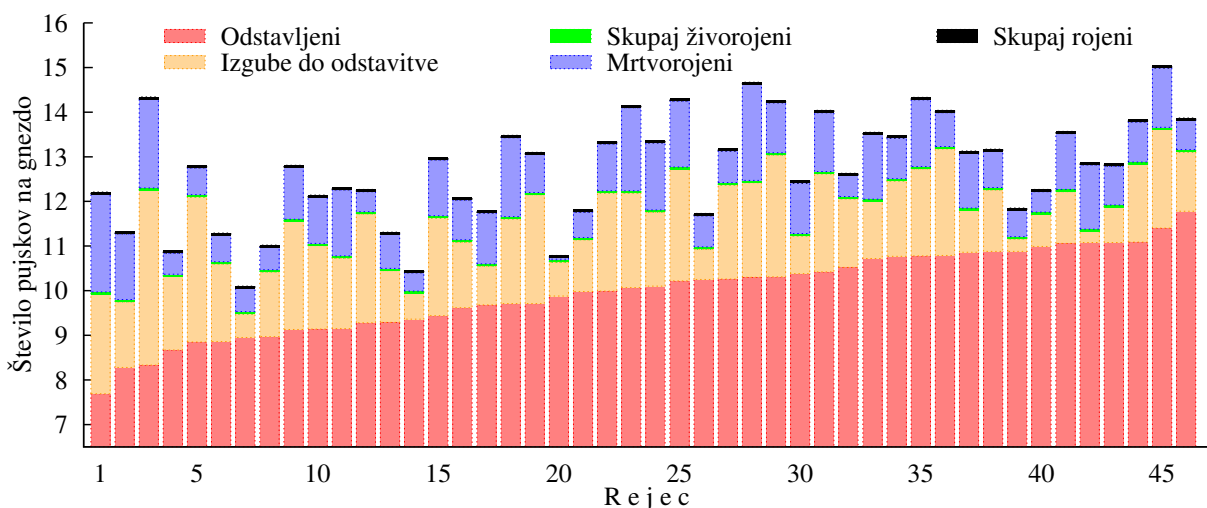


Slika 3.11: Dolžina interim obdobja in število živorojenih pujskov pri starih svinjah na kmetijah v Sloveniji v letu 2020

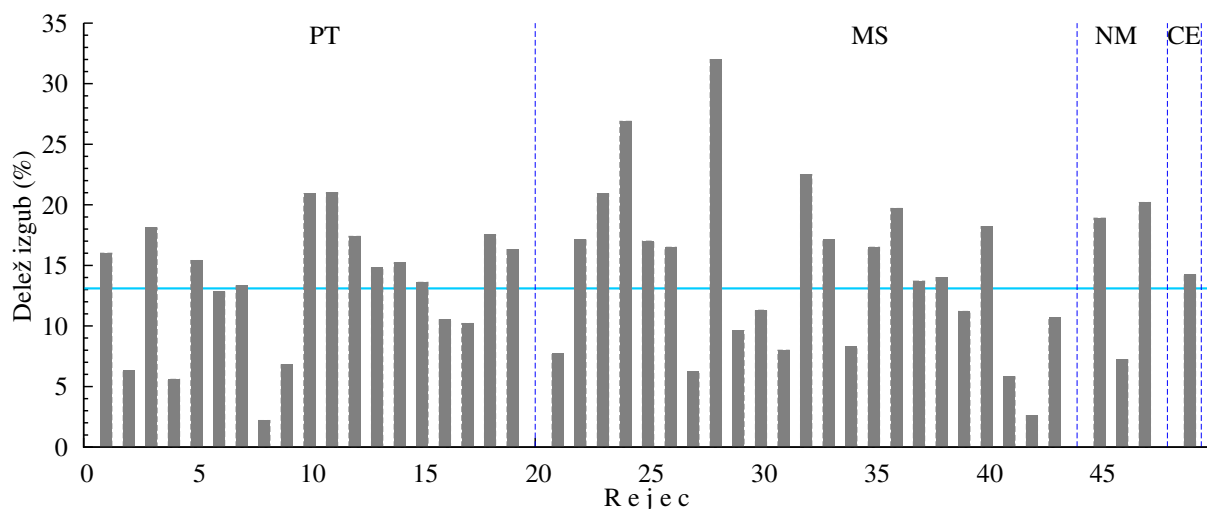


Slika 3.12: Dolžina neproduktivnih faz pri starih svinjah na kmetijah v Sloveniji v 2020

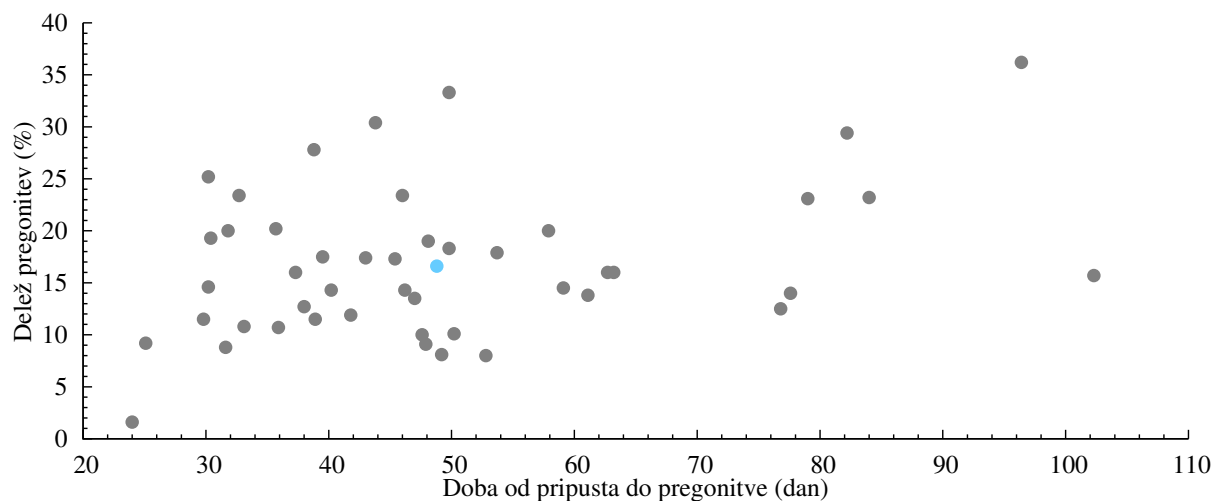
3.3 Svinje skupaj



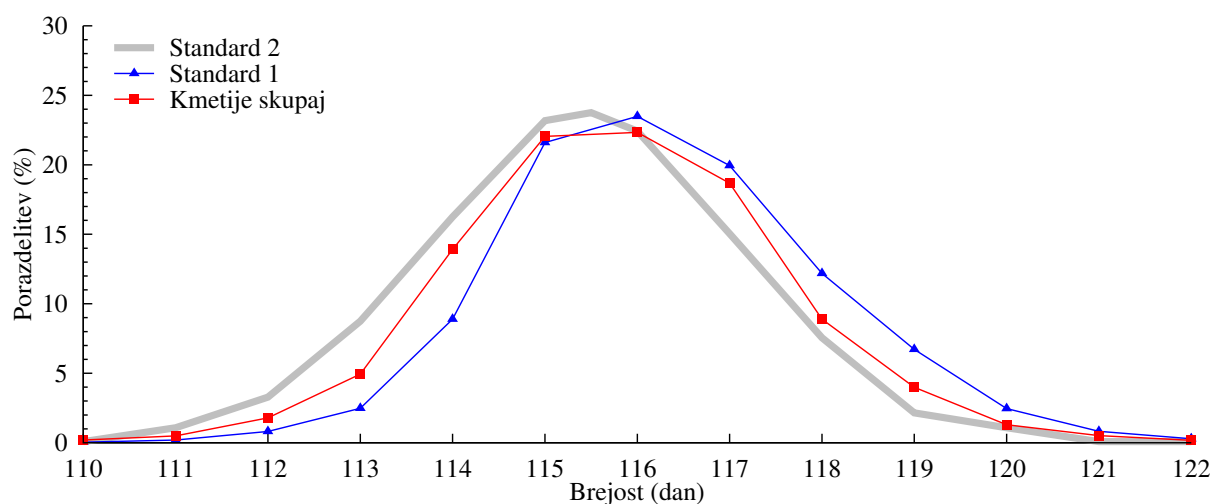
Slika 3.13: Velikost gnezda na kmetijah v 2020



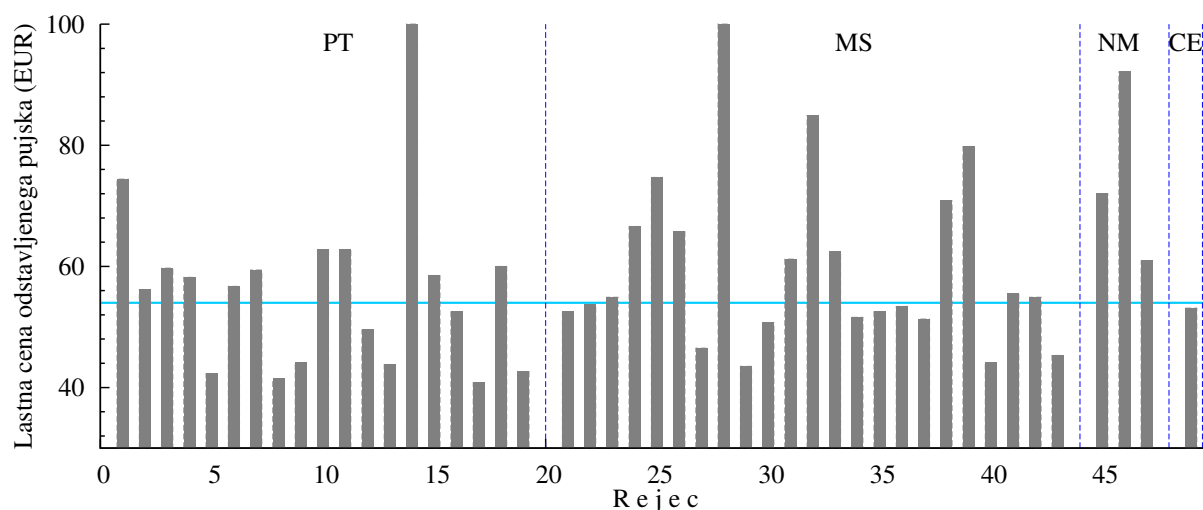
Slika 3.14: Delež izgubljenih pujskov na kmetijah po zavodih v Sloveniji v letu 2020



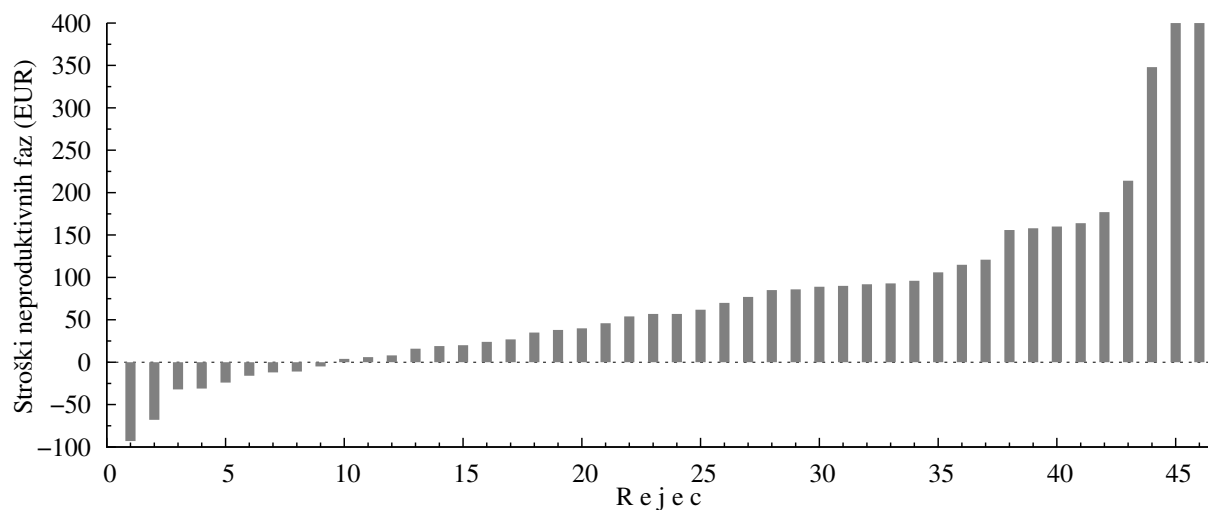
Slika 3.15: Delež pregonitev in doba od pripusta do pregonitve na kmetijah v Sloveniji v letu 2020



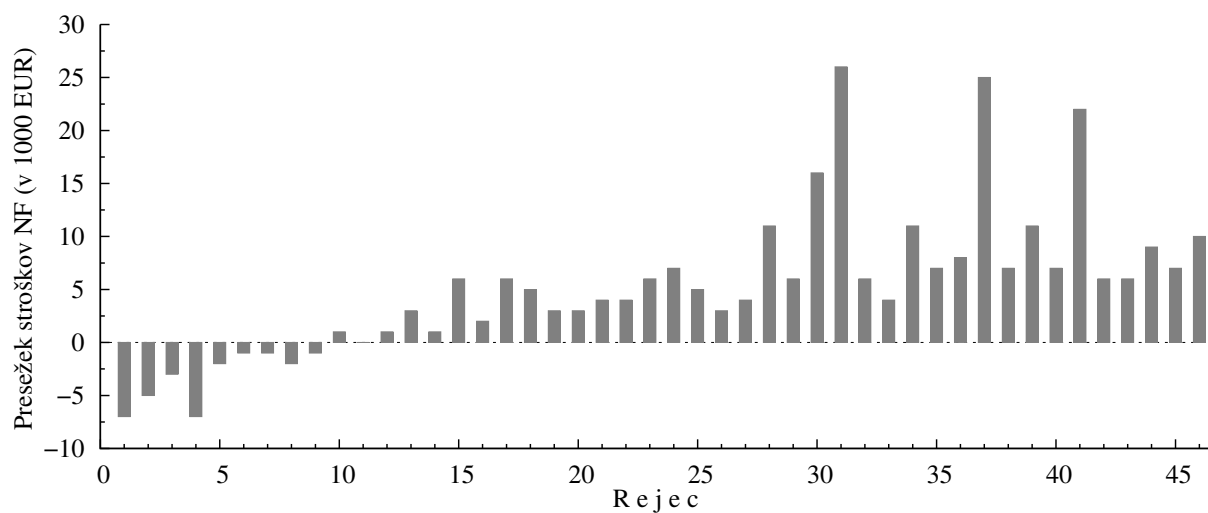
Slika 3.16: Porazdelitev dolžine brejosti na kmetijah v Sloveniji v letu 2020 v primerjavi s standardi



Slika 3.17: Lastna cena odstavljenega pujska v EUR na kmetijah v Sloveniji v letu 2020



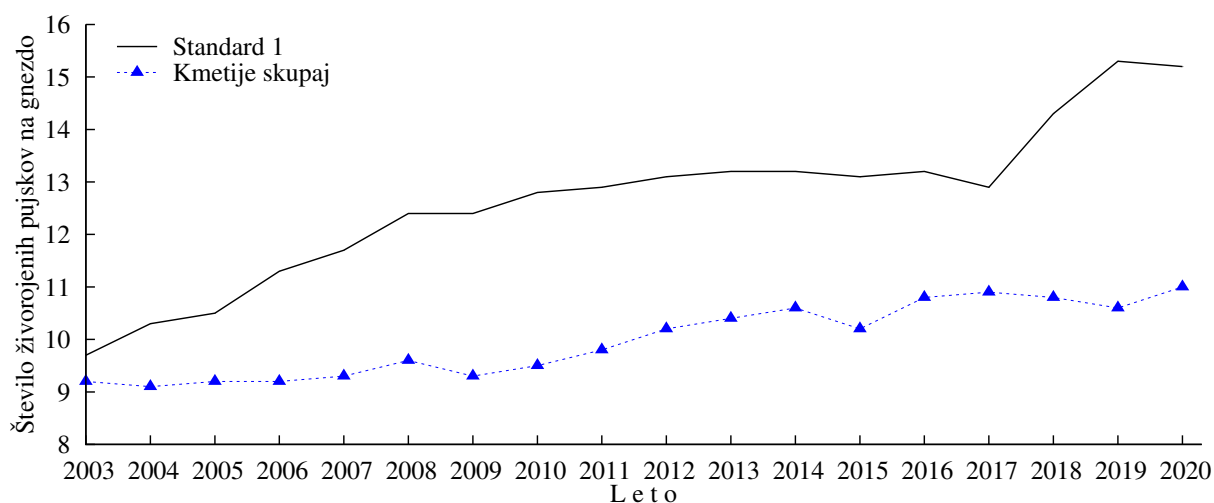
Slika 3.18: Dodatni stroški neproduktivnih faz na gnezdo v EUR na kmetijah v Sloveniji v letu 2020



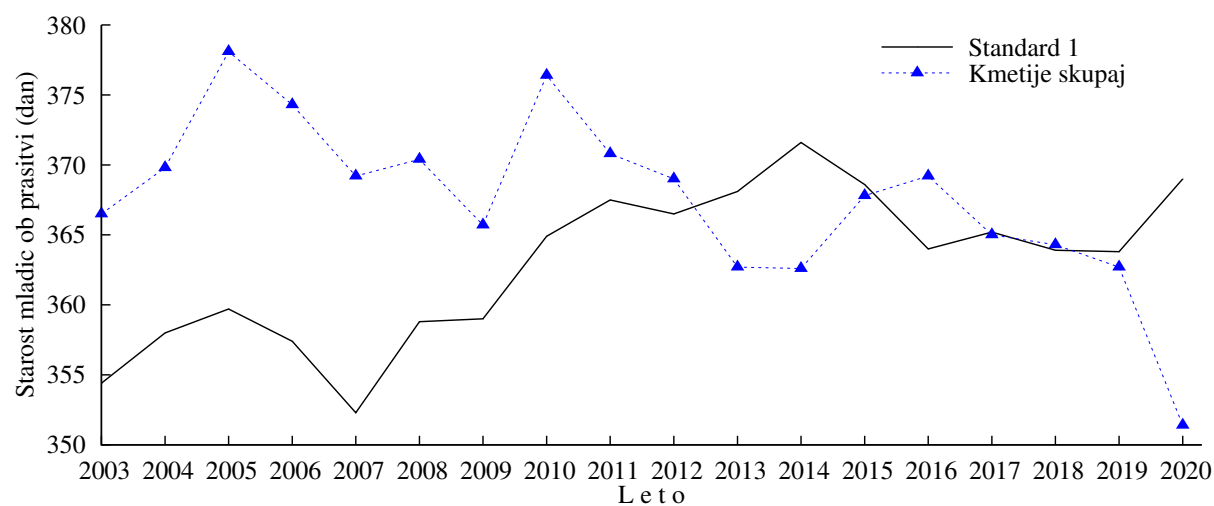
Slika 3.19: Dodatni stroški neproduktivnih faz na kmetijo v 2020

3.4 Spremembe rezultatov plodnosti po letih

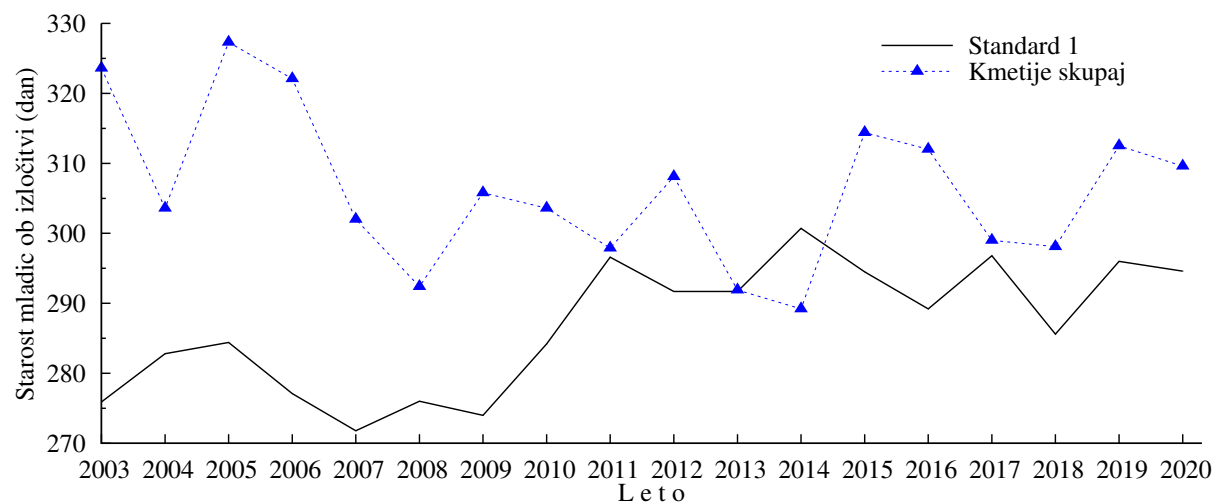
3.4.1 Mladice



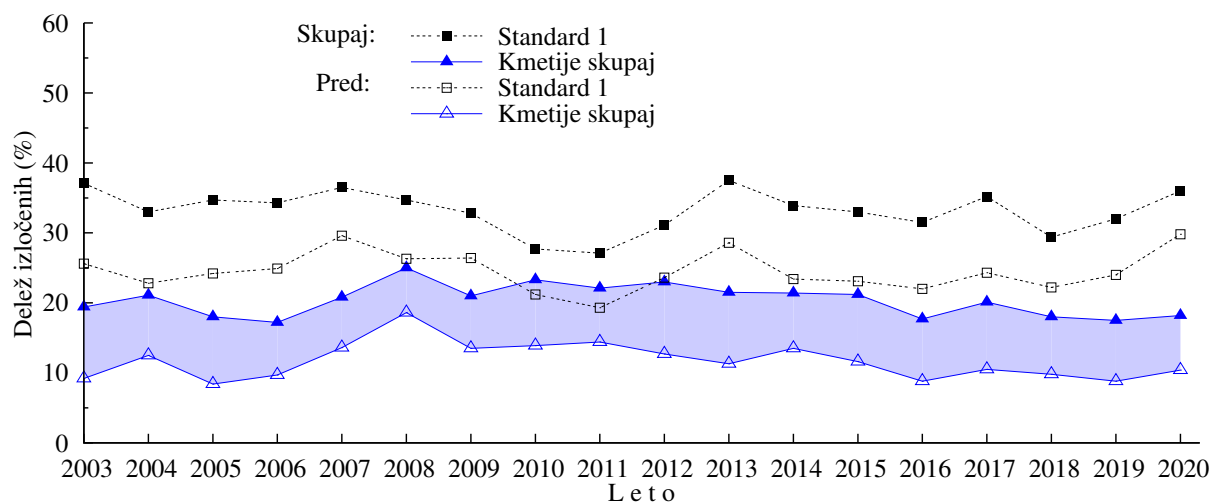
Slika 3.20: Število živorojenih pujskov pri mladicah po letih



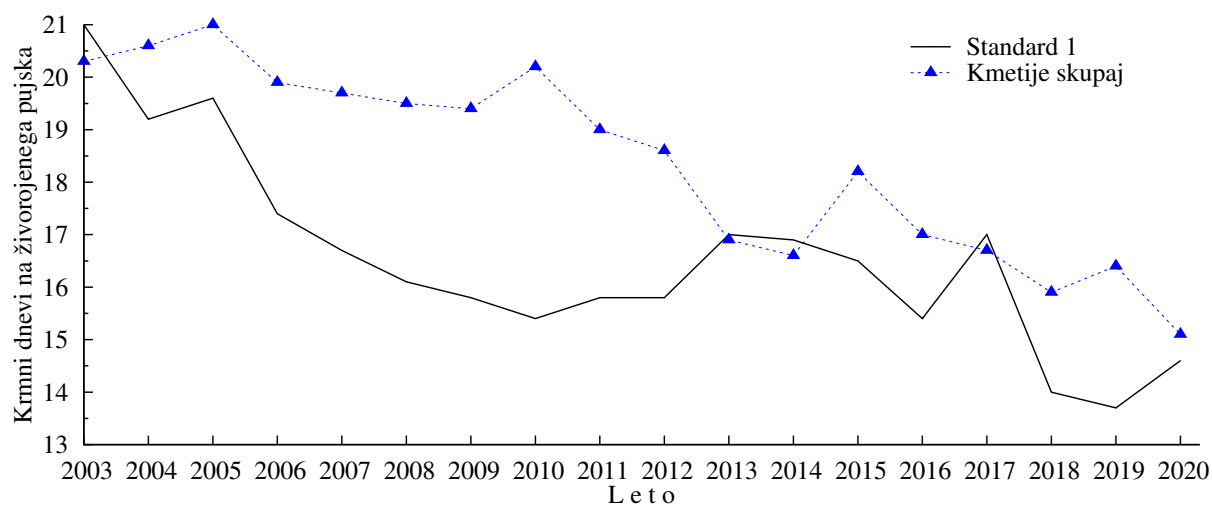
Slika 3.21: Starost mladic ob prasniti po letih



Slika 3.22: Starost mladic ob izločitvi po letih

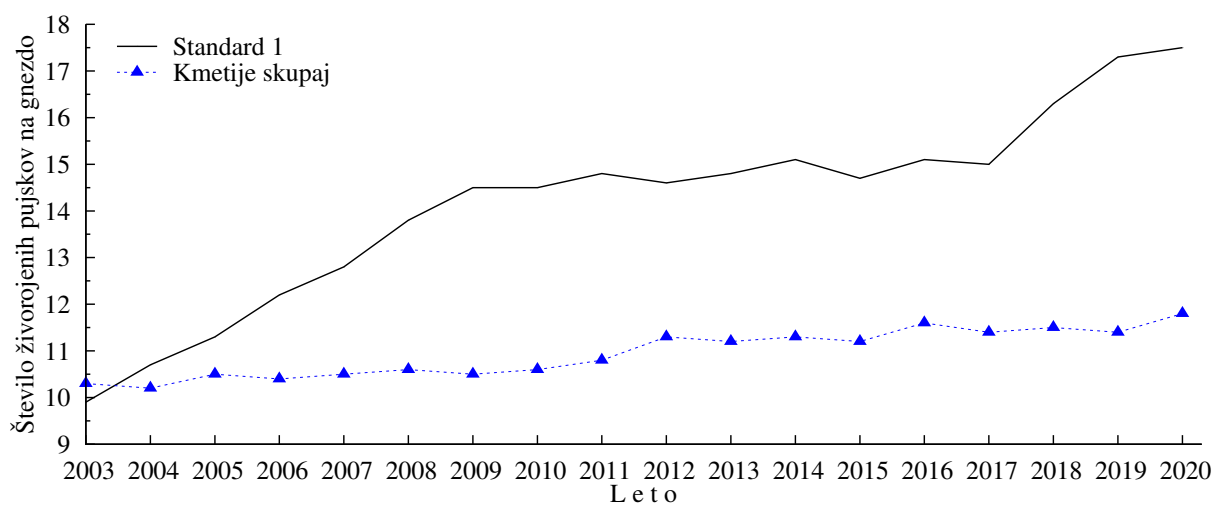


Slika 3.23: Delež izločenih mladic pred (prazni znaki) in po (obarvani del) pripustih ter skupaj (polni znaki) po letih

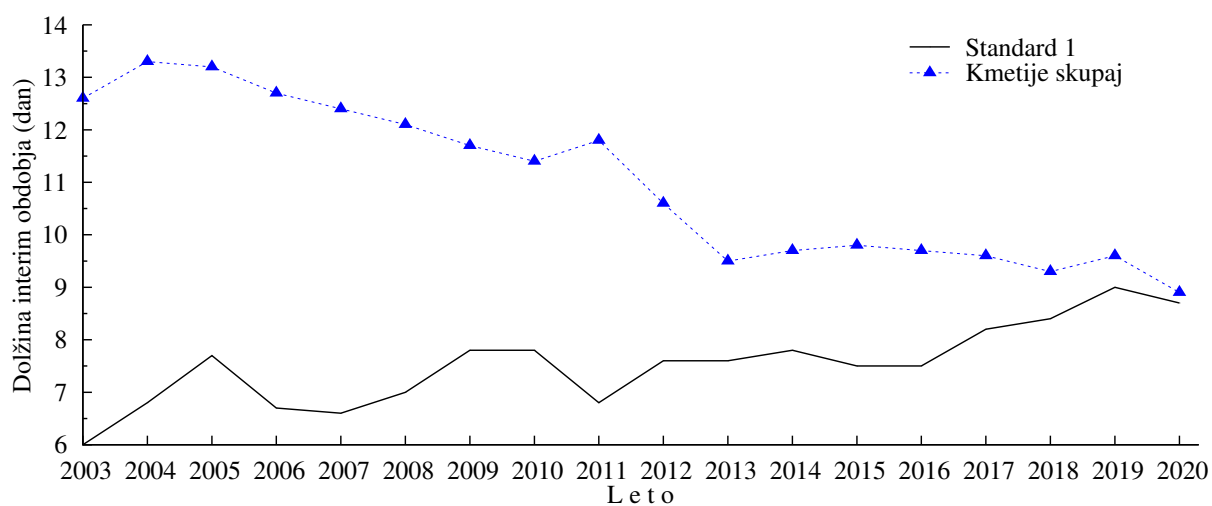


Slika 3.24: Število krmnih dni na živorojenega pujska pri mladicah po letih

3.4.2 Stare svinje



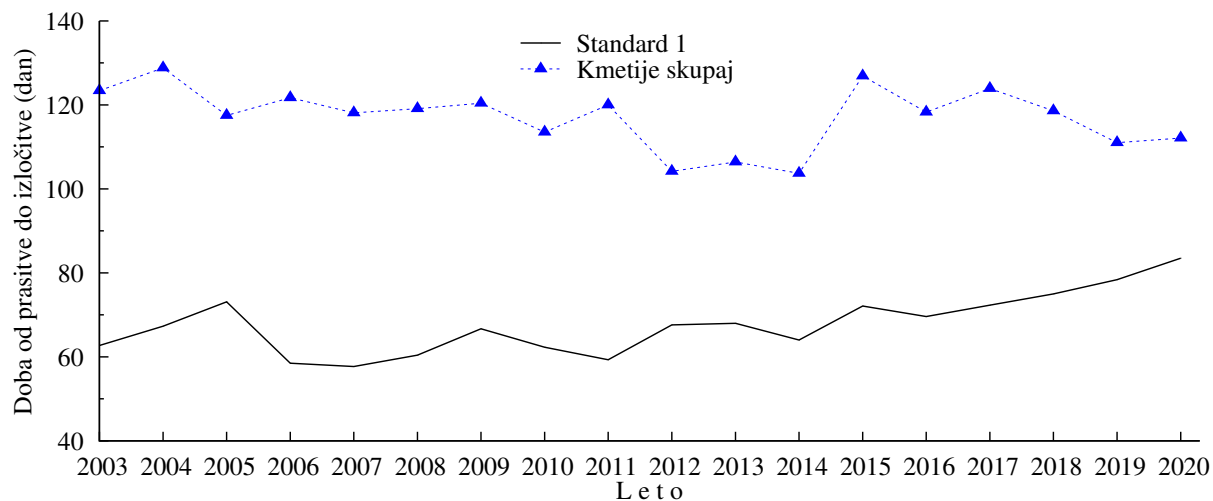
Slika 3.25: Število živorojenih pujskov pri starih svinjah po letih



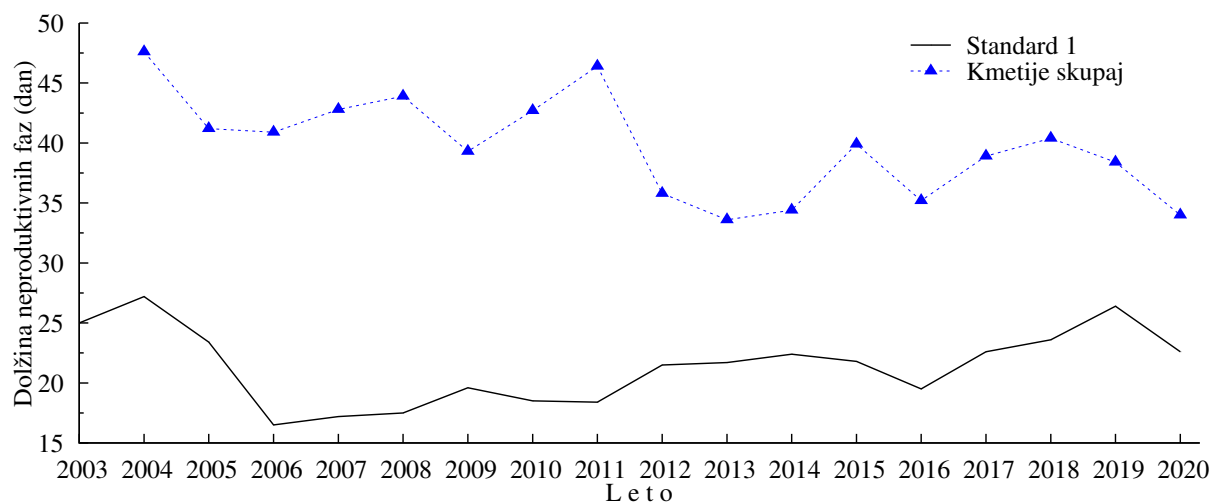
Slika 3.26: Dolžina interim obdobja pri starih svinjah po letih



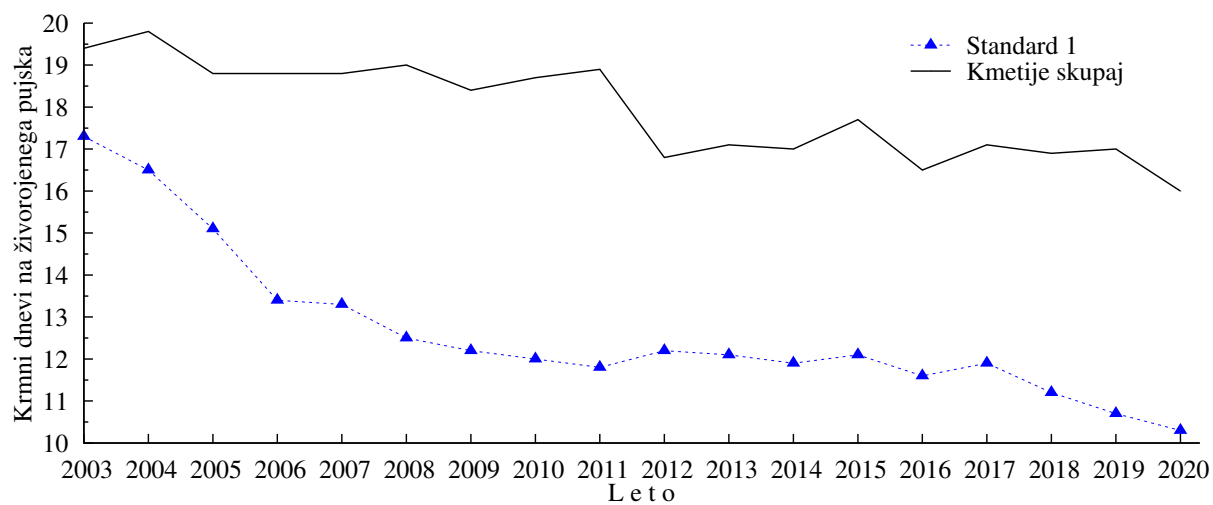
Slika 3.27: Delež izločenih starih svinj po letih



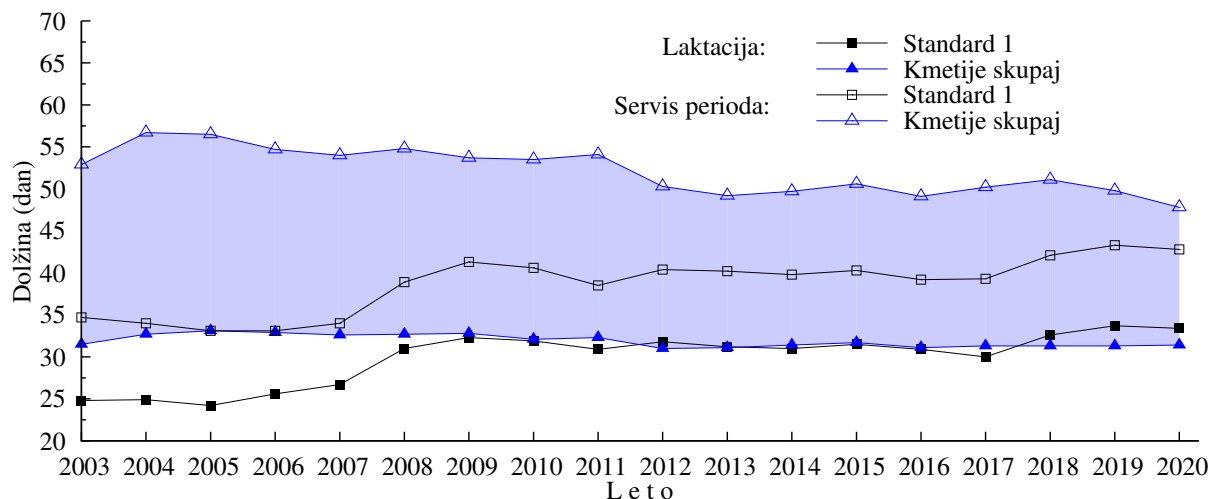
Slika 3.28: Doba od prاسitve do izločitve pri starih svinjah po letih



Slika 3.29: Dolžina neproduktivnih faz pri starih svinjah po letih

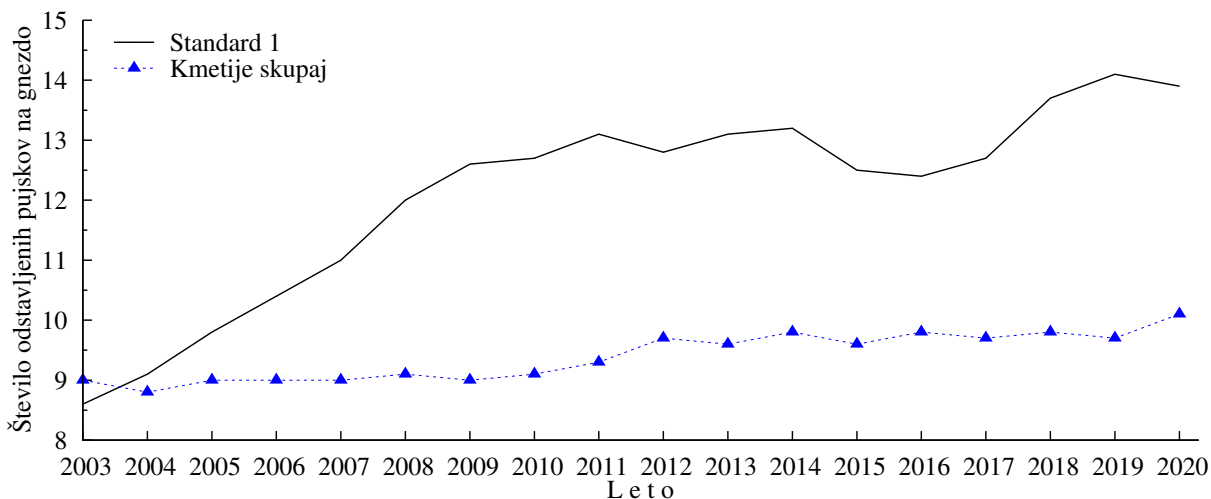


Slika 3.30: Število krmnih dni na živorojenega pujska pri starih svinjah po letih

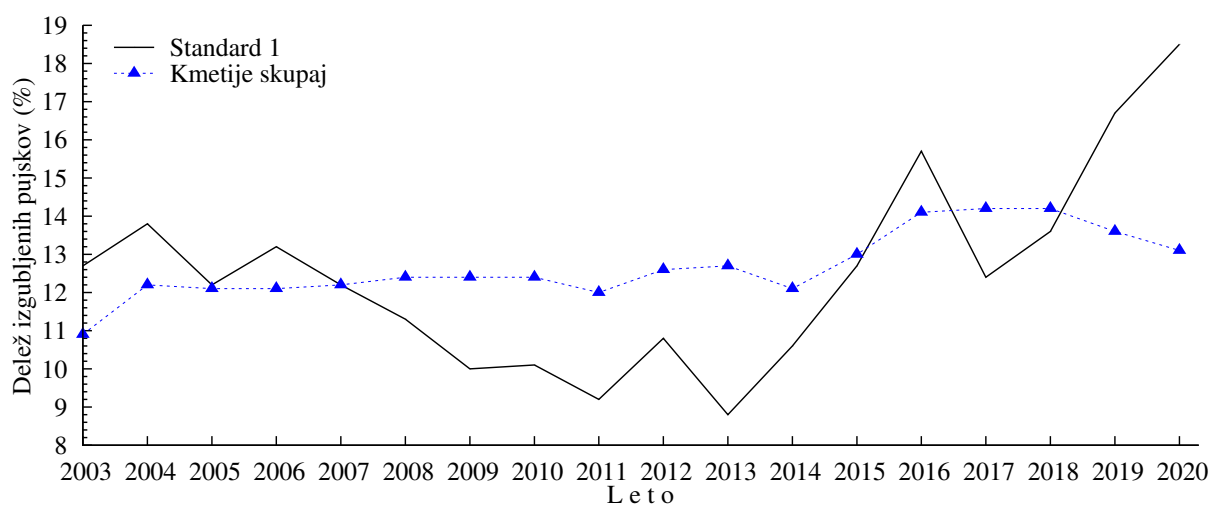


Slika 3.31: Dolžina laktacije, podstavitvenega premora (obaravni del) in servis periode pri starih svinjah po letih

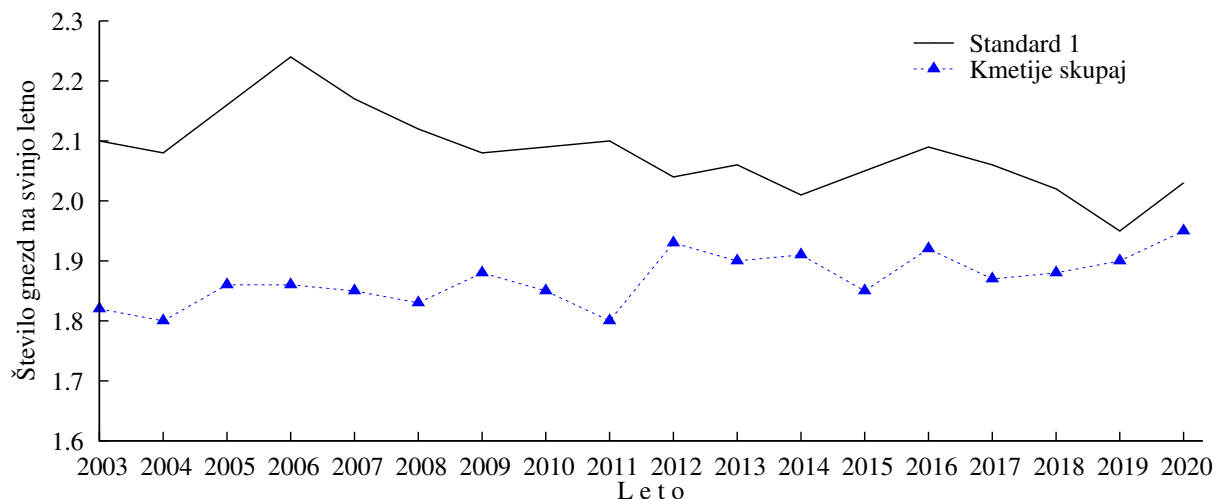
3.4.3 Svinje skupaj



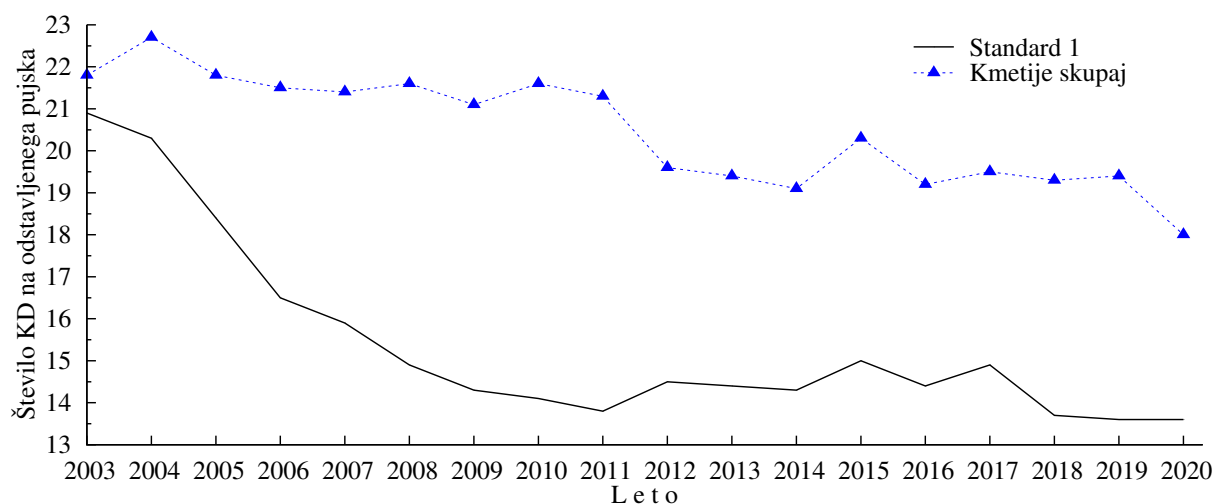
Slika 3.32: Število odstavljenih pujskov na gnezdo po letih



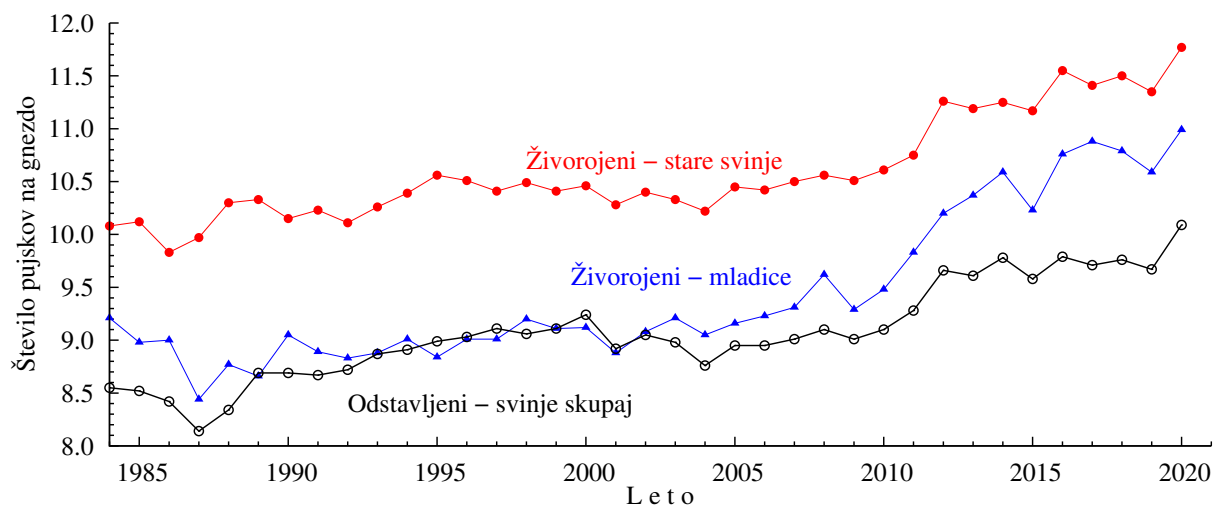
Slika 3.33: Delež izgubljenih pujskov po letih



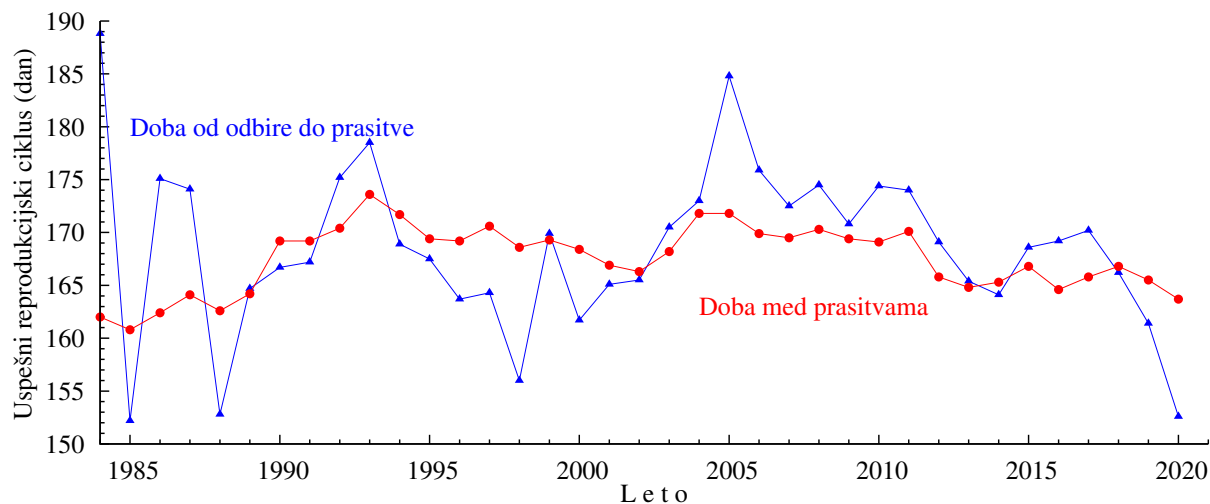
Slika 3.34: Število gnezd na svinjo letno po letih



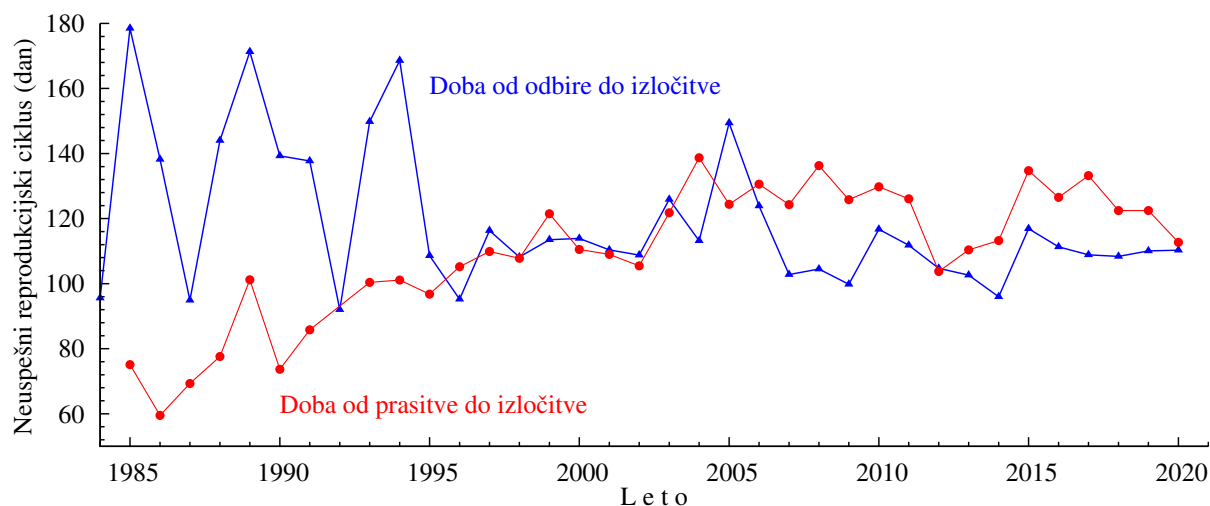
Slika 3.35: Število krmnih dni na odstavljenega pujska po letih



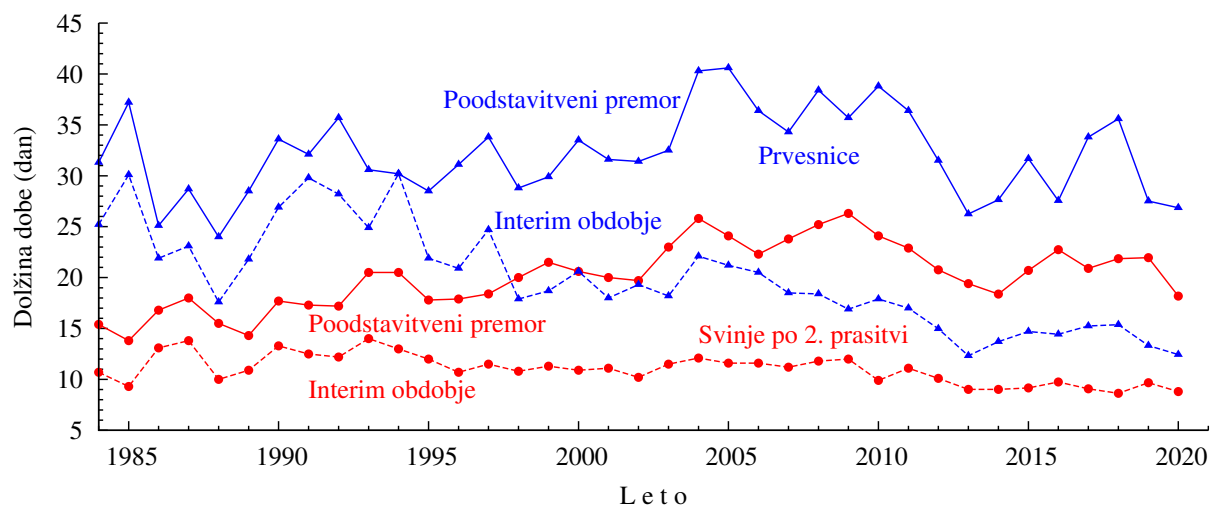
Slika 3.36: Število živorojenih in odstavljenih pujskov na gnezdo pri mladicah in starih svinjah na kmetijah v Sloveniji po letih



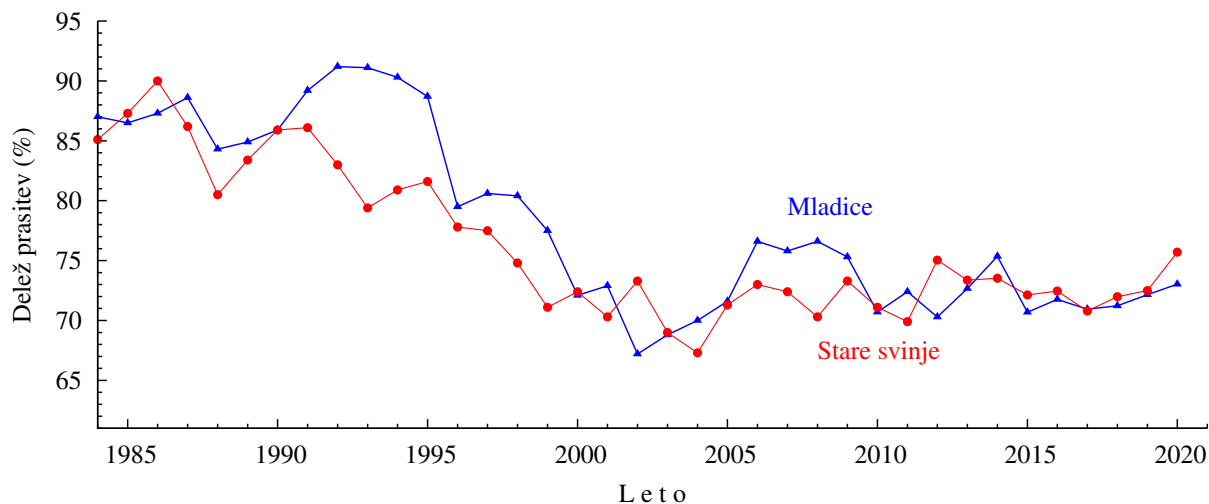
Slika 3.37: Dolžina uspešnega reprodukcijskega ciklusa pri mladica in starih svinjah na kmetijah v Sloveniji po letih



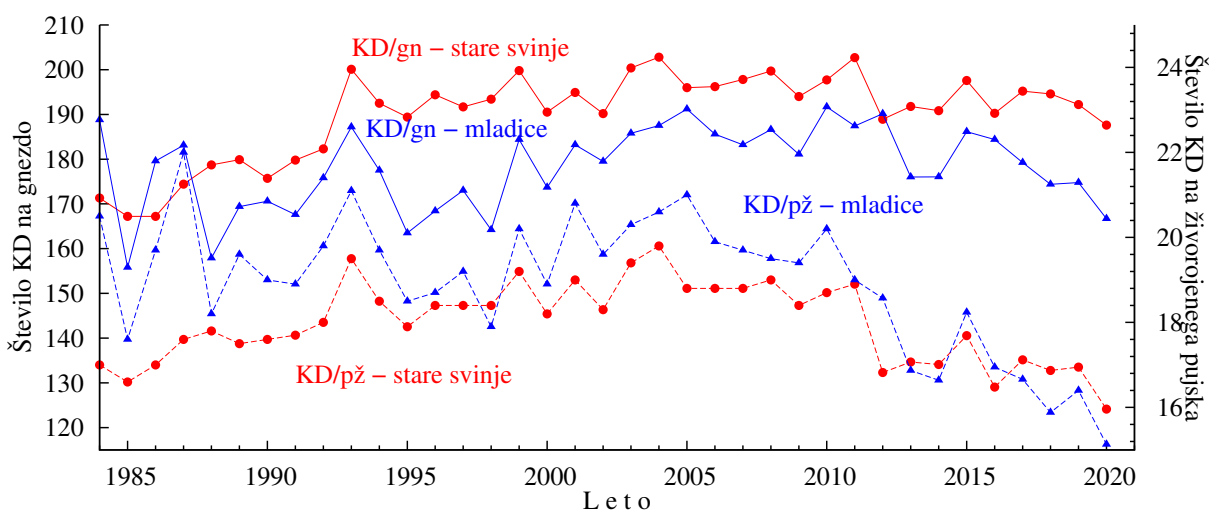
Slika 3.38: Dolžina neuspešnega reprodukcijskega ciklusa na kmetijah v Sloveniji po letih



Slika 3.39: Dolžina poodstavitvenega premora in interim obdobja pri prvesnicah in svinjah po 2. prاسitvi na kmetijah v Sloveniji po letih

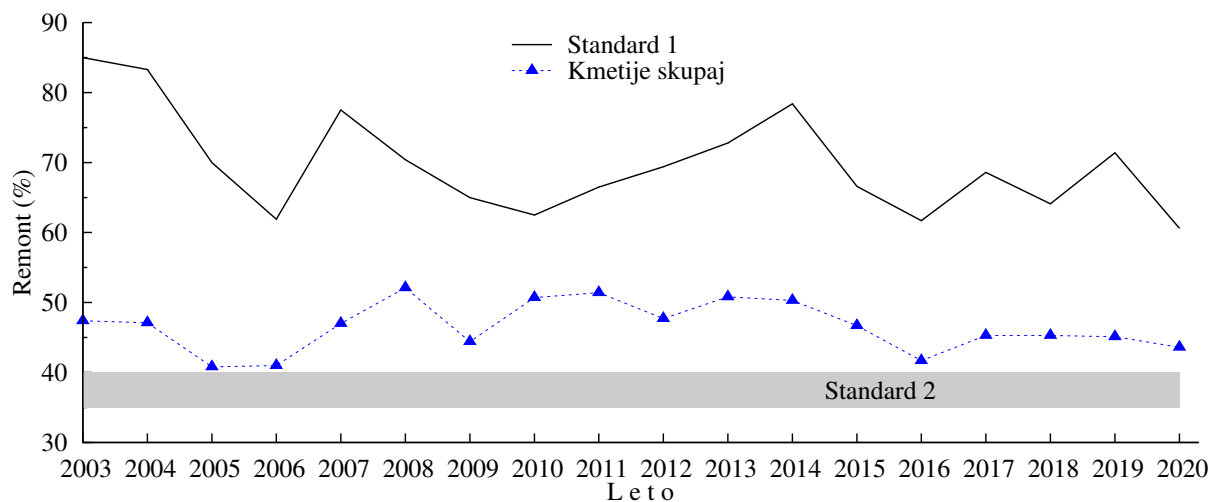


Slika 3.40: Delež prasitev pri mladících in starih svinjáh na kmetijáh v Sloveniji po letih

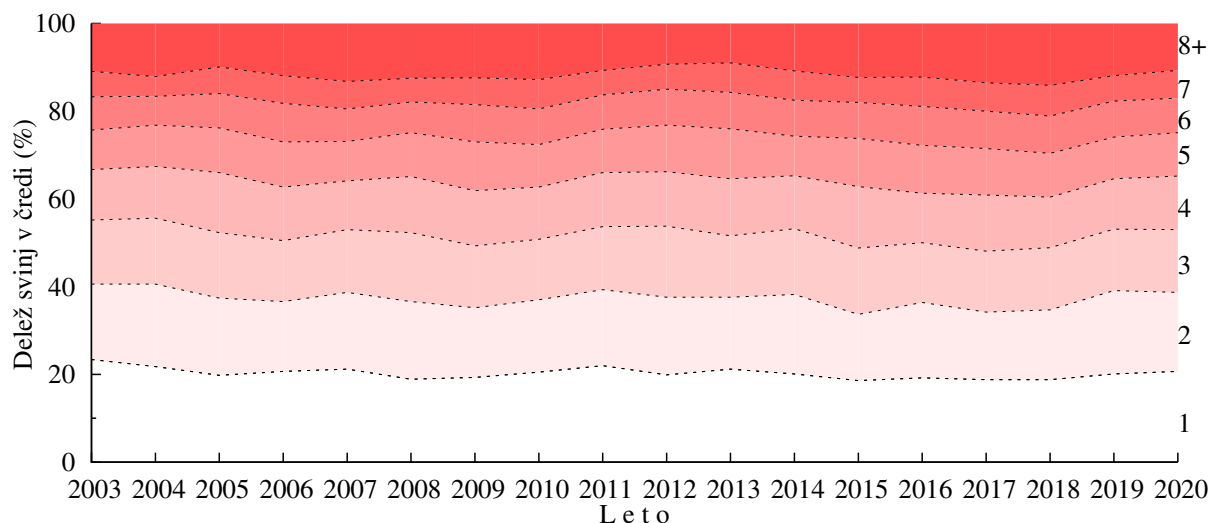


Slika 3.41: Število KD na gnezdo pri mladících in starih svinjáh (polna črta) ter na živorojenega pujska pri mladících in starih svinjáh (črtkana črta) na kmetijáh v Sloveniji po letih

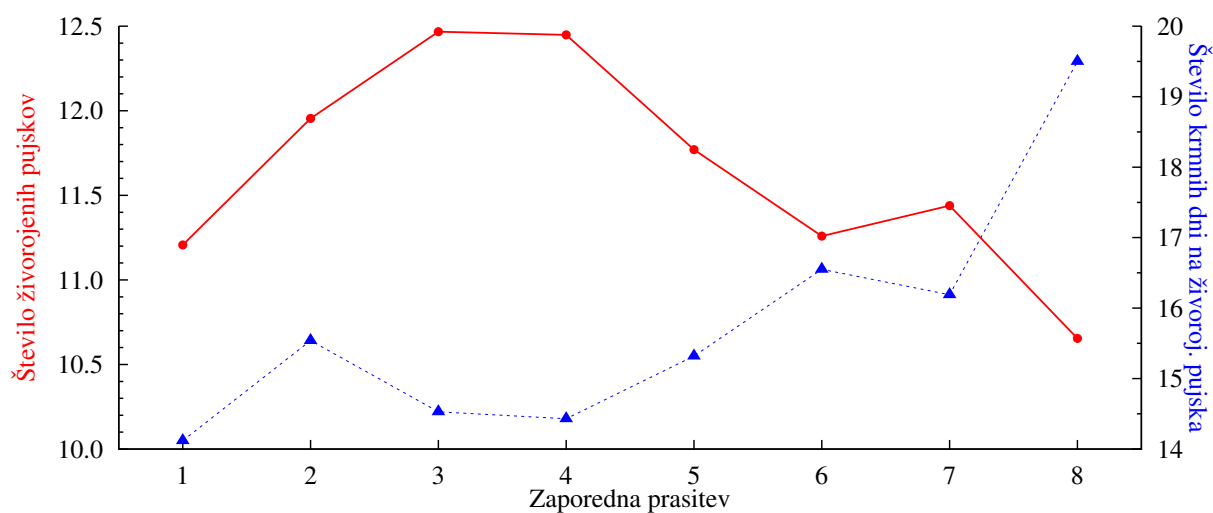
3.4.4 Starostna struktura črede



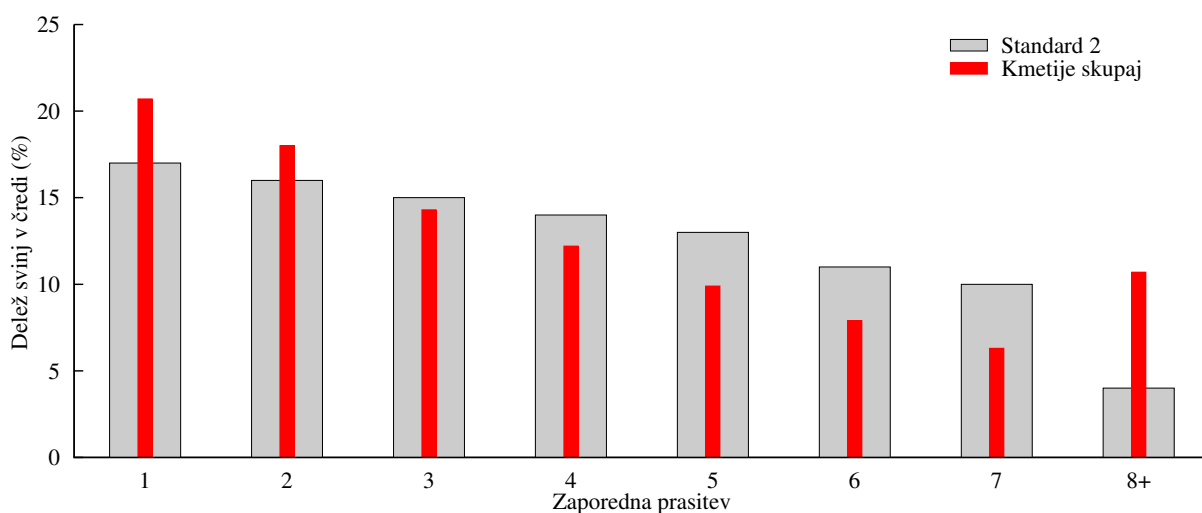
Slika 3.42: Remont po letih



Slika 3.43: Starostna struktura črede po zaporedni prasitvi po letih



Slika 3.44: Število živorojenih pujskov in število KD na živorojenega pujska po zaporednih prasitvah



Slika 3.45: Starostna struktura črede po zaporednih prasitvah v 2020